



IF IT'S WORTH BUILDING, IT'S WORTH TESTING

This wishlist was generated on 10/05/2018, and contains the following Products:

38-1000

Blaine Air Permeability Apparatus

38-1200

Le Chatelier Flask

38-2010

Vicat Frame

38-2015/01

Automatic Vicat Apparatus

38-2695

Pocket Concrete Penetrometer

38-6000

Flow Table

38-3005

Le Chatelier Mould

38-3420/01

Le Chatelier Water Bath

38-3800/01

Autoclave

38-4600/01

Heat of Hydration Apparatus

38-7600

Spray Nozzle Apparatus

83-4170/01

Muffle Furnace

39-0035/01

Automatic/Manual 5 litre nominal capacity Mortar Mixer

39-1100

Three-gang Mould

39-0410

Three-gang Mould

39-0100

70.7 mm Cube Mould

39-1150/01

Jolting Table 220 - 240 V 50 Hz

39-1601/01

Humidity Cabinet ASTM 150 Litre Capacity

39-1300/01

Humidity Cabinet 320 Litre Capacity Compliant to EN196 and EN459-2

39-7160/01

ADR Touch Control Pro 250/25 Auto Cement Machine

39-7100/01

10kN Flexural/Tensile Testing Machine

38-0200/01

ELE Flame Photometer



Blaine Air Permeability Apparatus

Code: 38-1000

Product Group: Blaine Fineness Apparatus,
Determination of Fineness Blaine Apparatus

Standards

EN 196-6, EN 459-2, EN 13286-44, BS 4359-2, ASTM C204, AASHTO T153

Specification

Cell	Stainless steel; 12.70 \pm 0.10 mm i.d.
Disk	0.9 \pm 0.1 mm thick with 30-40 one mm diam. holes.
Plunger	Stainless steel.
Manometer	U-tube glass with ground joint, stop cock and rubber bulb assembly.
Filter Paper	12.70 mm diam.
Fluid	Pure Mineral Oil.
Weight	Net 7 lbs. (3.2 kg).

Accessories



Electronic Balance - 620 g x 0.001 g

Code: 78-5405/01



Filter Papers

Code: [38-0650](#)



Pure Mineral Oil 1 Litre Bottle.

Code: [38-0620](#)



Reference Cement

Code: [38-0645](#)

Spares/Consumables



Aspirator

Code: [38-0500/11](#)



Blaine Air Permeability Cell

Code: [38-1000/15](#)



Filter Paper

Code: [38-0652](#)



Manometer U-tube

Code: [38-1000/10](#)



Le Chatelier Flask

Code: 38-1200

Product Group: Le Chatelier Flask, Specific Gravity (relative density) of Hydration Cement

For determining the density of hydraulic cement and lime, supplied complete with calibration certificate. Capacity 250ml. Graduated from 0 to 1ml and from 18 to 24ml graduations. Accurate to 0.05ml.

Standards

EN 196-6, ASTM C128, ASTM C188, E 694, AASHTO T133

Specification

Graduations

Zero mark represents 250 ml, the capacity of the large bulb; neck graduations from 0-1 ml in 0.1 ml divisions with two extra 0.1 ml graduations above the 1.0 and below the 0 marks; bulb portion of neck holds 17 ml; top portion of neck graduated from 18-24 ml in 0.1 ml divisions; 24 ml capacity.

Stopper

Ground glass.

Weight

Net 8 oz. (227 g).

Accessories



Chattaway Spatula 125 mm

Code: 81-0180



Electronic Balance - 620 g x 0.001 g

Code: [78-5405/01](#)



Water Bath - 12 litres

Code: [82-8500/01](#)



Vicat Frame

Code: [38-2010](#)

Product Group: [Vicat Method](#)

Complete with consistency plunger, 10 mm diameter.
Requires one initial or final set needle to make up test weight to 300g.

Standards

EN 196-3, EN 13454-2, ASTM C187, ASTM C191

Further Information

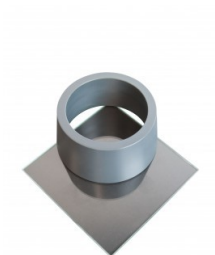
****NOT AVAILABLE FOR SALE IN THE USA****

Accessories

ASTM Initial Set Needle

Code: [38-2620](#)





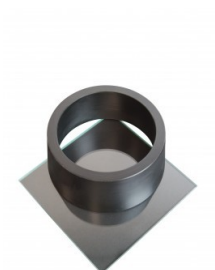
ASTM Vicat Mould

Code: [38-2660](#)



EN Initial and Final Set Needle

Code: [38-2110](#)



EN Vicat Mould

Code: [38-2300](#)



Engineer's Steel Rule

Code: [81-0805](#)



Harvard Trip Balance

Code: [78-7090](#)



Timer Clock

Code: [81-0518](#)



Vicat Mould

Code: [38-2200](#)



Weights for Harvard Trip Balance

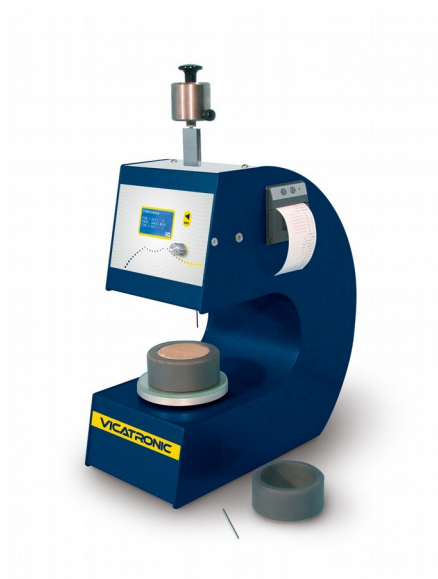
Code: [78-7110](#)

Spares/Consumables



Consistency Plunger

Code: [38-2010/10](#)



Automatic Vicat Apparatus

Code: [38-2015/01](#)

Product Group: [Automatic Vicat](#)

Complete with EN and ASTM Initial and Final needles, Consistency Plunger, Windows(R) software and RS232 cable, 1 x EN and ASTM Mould and Glass Plate. Suitable for continuous use in saturated humidity, at a controlled temperature of $20^{\circ}\text{C} \pm 1^{\circ}\text{C}$.

Standards

ASTM C187, ASTM C191

Further Information

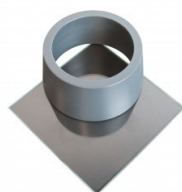
****NOT AVAILABLE FOR SALE IN THE USA****

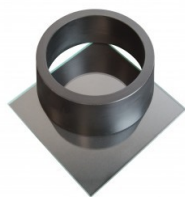
For 220 - 240 V AC, 50 - 60 Hz, 1 ph.

Accessories

ASTM Vicat Mould

Code: [38-2660](#)





EN Vicat Mould

Code: [38-2300](#)



Mould Tank

Code: [38-2015/15](#)



Needle Cleaning Device

Code: [38-2015/12](#)



Printer Paper Rolls

Code: [38-2015/14](#)



Vicat Mould

Code: [38-2200](#)

Spares/Consumables



ASTM Initial and Final Set Needle

Code: [38-2023](#)



Consistency Plunger

Code: [38-2015/16](#)



EN Initial and Final Set Needle

Code: [38-2021](#)



Pocket Concrete Penetrometer

Code: 38-2695

Product Group: Concrete Mortar Penetrometer,
Concrete Mortar Penetrometer, Setting Time by
Penetration Resistance

- Stainless steel
- Corrosion resistant
- Two versions available for Concrete and

Soils

- Easy to read scales
- Complies to ASTM C403 and AASHTO T197

Standards

ASTM C187, ASTM C191, ASTM C780

Specification

Needle	Steel shaft; 1/20 sq. in. surface area.
Range	0 to 700 psi.
Scale	Direct-reading; indicator sleeve holds reading until released.
Dimensions	3/4" (19 mm) diam. x 7" (178 mm) long.
Carrying Case	Canvas, with belt-loop.
Weight	Net 8 oz. (227 g).



Flow Table

Code: [38-6000](#)

Product Group: [Flow and Workability of Mortar Lime](#)

Manufactured from cast bronze as specified in BS and ASTM C230. Complete with Tripod and Baseplate.

Standards

BS 4551-1, BS 3892-1, ASTM C230

Further Information

****NOT AVAILABLE FOR SALE IN THE USA****

Accessories



ASTM Calipers

Code: [38-6080](#)



Flow Mould

Code: [38-6040](#)



Motorised Unit for the 38-6000 Flow Table

Code: [38-6100/01](#)



Plastic Tamper

Code: 38-6160



Le Chatelier Mould

Code: [38-3005](#)

Product Group: [General Expansion of Dry Hydrated Lime by the Le Chatelier Method](#), [Soundness of Cement Paste by the Le Chatelier Method](#), [Soundness](#)

Comprising a split cylinder fitted with two indicator stems. The mould is supplied complete with two glass plates and a weight 100 g \pm 10 g. Three moulds required for each test.

Standards

BS 6463, EN 196-3, EN 459-2

Further Information

****NOT AVAILABLE FOR SALE IN THE USA****

Accessories



Extensibility of Mould Apparatus BS

Code: [38-3200](#)



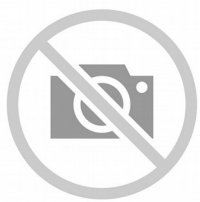
Extensibility of Mould Apparatus EN

Code: [38-3205](#)



Le Chatelier Water Bath

Code: [38-3420/01](#)



Tamping Rod

Code: [38-3300](#)



Trowel - Gauging

Code: [81-0335](#)



Le Chatelier Water Bath

Code: [38-3420/01](#)

Product Group: [Soundness of Cement Paste by the Le Chatelier Method, Soundness](#)

Manufactured from corrosion resistant material, complete with a removable rack to hold up to twelve moulds and timer unit.

Further Information

****NOT AVAILABLE FOR SALE IN THE USA****

Accessories



Extensibility of Mould Apparatus BS

Code: [38-3200](#)



Tamping Rod

Code: [38-3300](#)



Trowel - Gauging

Code: [81-0335](#)

Alternatives



Extensibility of Mould Apparatus BS

Code: [38-3200](#)



Tamping Rod

Code: [38-3300](#)



Trowel - Gauging

Code: [81-0335](#)



Autoclave

Code: [38-3800/01](#)

Product Group: [Soundness of Portland Cement by the Autoclave Method](#)

The autoclave provides high pressure steam curing of the specimens and is supplied with a safety valve pressure gauge and controlled heater unit. The pressure vessel is independently certified and certificated. A specimen rack with capacity for 12 specimens included. The unit conforms to the requirements of ASTM C151.

220-240 V 50/60 Hz 1ph

Standards

ASTM C151

Further Information

****NOT AVAILABLE FOR SALE IN THE USA****

Spares/Consumables



Lid Sealing Gasket

Code: [38-3800/13](#)



Heat of Hydration Apparatus

Code: [38-4600/01](#)

Product Group: [Heat of Hydration Cement](#)

For 220 - 240 V AC, 50 Hz, 1 ph.

Standards

BS 4550

Further Information

****NOT AVAILABLE FOR SALE IN THE USA****

Accessories



200 mm Diameter Receiver

Code: [79-0020](#)



200mm Dia BS Sieve 125Mic Stainless Steel Mesh.

Code: [79-0110](#)



200mm Dia BS Sieve 600Mic Stainless Steel Mesh.

Code: 79-0200



Desiccator - Non-vacuum

Code: 82-2100



Electronic Balance - 220g x 0.001g

Code: 78-5335/01



Harvard Trip Balance

Code: 78-7090



Sieve Brush Nylon

Code: 79-7210



Silica Gel

Code: [82-7091](#)



Spatula 100 mm

Code: [81-0100](#)



Weighing Bottle

Code: [82-1540](#)



Weights for Harvard Trip Balance

Code: [78-7110](#)

Spares/Consumables



Beckman Thermometer and Reader Glass

Code: [38-4600/12](#)



Dewar Flask

Code: [38-4600/10](#)



Glass Paddle for Stirrer

Code: [38-4600/13](#)

Alternatives



Mortar and Pestle Porcelain.

Code: [23-3505](#)



Muffle Furnace

Code: [83-4170/01](#)



Porcelain Crucible

Code: [82-3320](#)



Spray Nozzle Apparatus

Code: [38-7600](#)

Product Group: [Fineness of Fly Ash \(Wet Sieving\)](#)

Comprising a spray nozzle 17.5 mm ID with 17 holes as specified in EN451, a vacuum pressure gauge, 160 kPa graduated at 5 kPa divisions and fittings to attach the apparatus to a standard domestic water supply. Supplied without sieve.

Standards

BS 3892-1, EN 451-2, ASTM C430

Further Information

****NOT AVAILABLE FOR SALE IN THE USA****

Accessories



45 µm Sieve

Code: [38-7600/12](#)



Muffle Furnace

Code: 83-4170/01

Product Group: Furnaces, Loss-on-Ignition,
Loss-on-Ignition

The unique design of oven door for safe and easy operation to ensure that the high-temperature hot gas will not escape from inside the oven.

Inert gas inlet and outlet reserved in the chamber.

Micro-computer PID controller: easy operation, accurate, reliable and safe control.

Inside lining of fire-door and box panel are both made of stainless steel materials and are corrosion-resistance and free deformation under high temperature.

Light chamber for durable service (refractory-brick chamber and ceramic-fiber chamber are optional).

With excellent door seal, thermal loss is minimised and temperature evenness is increased in the chamber.

Standards

EN 196-2, EN 459-2, EN 13454-2, BS 1016-4, ISO 344, ISO 1171, ASTM D2361, ASTM D2795, ASTM D3714

Specification

Work chamber dimensions (l x w x h)	300 x 200 x 120 mm
Capacity	7 litres
Maximum temperature	1200 °C
Electrical supply	220 – 240 V AC, 50 - 60 Hz, 1 ph
Power supply	5 KW
Weight	130 kg

Spares/Consumables



Controller, for use in 83-4170/01

Code: [83-4170/11](#)



Element heating for use in 83-4170

Code: [83-4170/14](#)



Element/Chamber complete, heating, for use in 83-4170/01

Code: [83-4170/12](#)



Refractory brick for 83-4170/01

Code: [83-4170/13](#)



Thermostat, KGrade, 370 long, dia 2.5, for 83-4170/01

Code: [83-4170/10](#)

Alternatives



Heat of Hydration Apparatus

Code: 38-4600/06



Heat of Hydration Apparatus

Code: 38-4600/01



Rotatest 1500

Code: 45-3810/01



Rotatest 3000

Code: 45-3815/01



Automatic/Manual 5 litre nominal capacity Mortar Mixer

Code: 39-0035/01

Product Group: Automatic/Manual 5 Litre Nominal Capacity Mortar Mixer

- New Microprocessor control
- New mix program selector
- Complies with latest EN Standards update
- Choice of automatic mixing cycles
- Sand and water dispenser supplied as standard

This mixer is designed to mix mortars and cement pastes to the requirements of the above Standards. The mixing paddle has a planetary motion and is driven by a motor with a microprocessor based speed and program controller. The mixer can be operated either in an automatic or manual mode. When the mixer is used in the manual mode, the two mixing speeds can be changed by means of a rocker switch, without switching off the motor. In the automatic mode any one of the preset mixing programs may be selected.

Standards

EN 196-1, EN 196-3, EN 413-2, EN 459-2, EN 1744-1, EN 13279-2, EN 1015-2, EN 13395-1, EN 13454-2, ISO 679, BS 3892-1, BS 3892-3, BS 6463-103, BS 4551-1

Further Information

****NOT AVAILABLE FOR SALE IN THE USA****

Complete with bowl and paddle, sand and Water dispensers. For 220 - 240 V AC, 50 - 60 Hz, 1 ph.

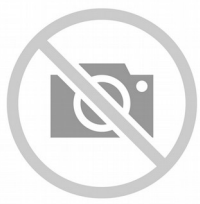
Specification

Dimensions (l x w x h)	530 x 350 x 580 mm
Speeds (rpm) Low, High	Paddle: 140 ± 5, 285 ± 10 Mixing Head: 62 ± 5, 125 ± 10
Rated Power	180 W
Bowl Capacity	5 litres approx.
Weight	54 kg

Accessories

Product Sheet

www.ele.com
+44 (0) 01525 249 200



Bowl Cover

Code: [39-0060](#)



Scraper

Code: [39-0065](#)

Spares/Consumables



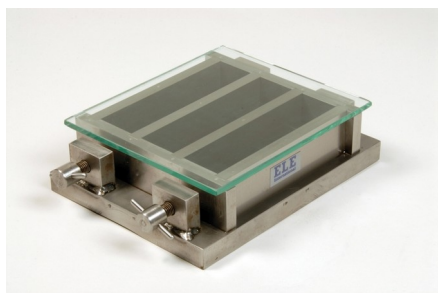
Bowl

Code: [39-0031/11](#)



Paddle

Code: [39-0031/10](#)



Three-gang Mould

Code: [39-1100](#)

Product Group: [Moulding of Prisms](#)

For 40.1 x 40 x 160 mm mortar prisms. This mould is manufactured to a very high specification. Supplied with glass plate.

Standards

EN 196-1, EN 413-2, EN 459-2, EN 1015-10, EN 13454-2, ISO 679, BS 3892-1, BS 4551-1

Further Information

****NOT AVAILABLE FOR SALE IN THE USA****

Accessories



Feeding Hopper

Code: [39-1120](#)

Spares/Consumables



Glass Plate

Code: [39-1100/10](#)



Mortar Sand

Code: [39-1170](#)

Alternatives



Feeding Hopper

Code: 39-1120



Three-gang Mould

Code: [39-0410](#)

Product Group: [Moulding of 50 mm and 100 mm Specimens](#)

For 50mm mortar cubes. Manufactured from cast iron with simple cube release mechanism.

Standards

BS 1881-131, ASTM C109

Further Information

****NOT AVAILABLE FOR SALE IN THE USA****

Accessories



Mould Oil (25 Litre Drum)

Code: [82-7341](#)



70.7 mm Cube Mould

Code: [39-0100](#)

Product Group: [Moulding of 70.7 mm Mortar Cubes](#)

Manufactured from steel to dimensions specified in the relevant British Standard. Supplied complete with baseplate. Three moulds required for each test.

Standards

BS 4550

Further Information

****NOT AVAILABLE FOR SALE IN THE USA****



Jolting Table 220 - 240 V 50 Hz

Code: [39-1150/01](#)

Product Group: [Jolting Table](#)

This machine consists of a mould table seated on a rotating cam driven at 60 revolutions per minute. The apparatus is supplied with a remote mains switch box, incorporating a push button start/stop control and automatic stop control at end of test.

Supplied without moulds.

Standards

EN 196-1, EN 413-2, EN 459-2, EN 1744-1, EN 1015-10, EN 1015-11, EN 13454-2, ISO 679, BS 3892-1, BS 4551-1

Further Information

****NOT AVAILABLE FOR SALE IN THE USA****

Specification

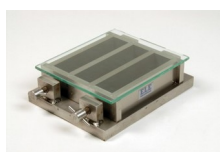
Motor rating	0.24 kW (1/3 hp)
Cam shaft RPM	60
Table lift	15 +/- 0.3 mm
Overall dimensions with swing bolts raised	(H x W x D) 340 x 400 x 1045 mm
Weight	90 kg

Accessories



Feeding Hopper

Code: [39-1120](#)



Three-gang Mould

Code: [39-1100](#)

Spares/Consumables



Mortar Sand

Code: [39-1170](#)



Scraper

Code: [39-1130](#)

Alternatives



Jolting Table 220 - 240 V AC 60 Hz

Code: [39-1150/06](#)



Humidity Cabinet ASTM 150 Litre Capacity

Code: 39-1601/01

Product Group: Humidity Cabinet ASTM

- Complete with temperature and Digital Data Recorder
- Micro-processor controller for temperature and humidity for precise and reliable control
- Stainless Steel interior with adjustable shelves
- CFC-free polyurethane insulation to provide efficient thermal stability
- 12mm access port
- 4 trays are included, but cabinet can fit 6 tray

Prior to testing, ASTM C109 requires prisms to be cured for a period of at least 24 hours at 23°C \pm 2°C, 95 % RH minimum. The prisms are then de-moulded and stored under water for the required curing time, usually 48 hours, 72 hours, 7 and 28 days.

The Humidity Cabinet is built to a high specification and is designed for the early curing of mortar prisms prior to storing under water. Relative humidity up to 98%.

Standards

ASTM C109, ASTM C511

Further Information

for 220-240 V AC 50 Hz 1ph

Specification

Temperature Range	+5 °C to 60 °C
Temperature Control	0.2 °C at 20°C
Temperature Variation	\pm 0.5 °C at 20°C
Humidity Range	0 $\frac{1}{2}$ - 98%
External Dimensions (mm)	1075 \times 635 \times 660
Internal Dimensions (mm)	590 \times 510 \times 490
Shelves	4 - Holds 6 x 39-1100 moulds
Shelf Capacity	15kg
Input Power	800 Watt
Weight	100 kg

Spares/Consumables



Spare shelf for Humidity Cabinets

Code: [39-1300/23](#)



Humidity Cabinet 320 Litre Capacity Compliant to EN196 and EN459-2

Code: 39-1300/01

Product Group: Humidity Cabinet BS EN, Prism
Moulds and Inserts

This cabinet has a stainless steel interior and it is fitted with adjustable shelves. It also has sealed chambers making it suitable for humidity's up to 98%. This can have an outer door heater to demist the inner toughened glass viewing door. Two 12 mm access ports are provided as standard.

Monitoring and control of both heating and cooling functions are performed with great accuracy, and achieves typical temperature stability of $\pm 0.5^{\circ}\text{C}$. The LED digital display allows the temperature performance to be easily verified. A digitally set over temperature safety cut-out is fitted to all models.

For 220 - 240 V AC, 50 Hz, 1 ph.

Standards

EN 196-1, EN 459-2

Further Information

****NOT AVAILABLE FOR SALE IN THE USA****

10 Reinforced Shelves and Circular Chart Recorder

Specification

Capacity	320 litres
Dimensions External, Internal	660 x 635 x 1745 mm, 490 x 510 x 1275 mm
Temperature Range	$+5.0^{\circ}\text{C}$ to $+50^{\circ}\text{C}$
Fluctuation (better than)	$\pm 0.2^{\circ}\text{C}$
Variation (better than)	$\pm 0.5^{\circ}\text{C}$
Recorder:	7 day,
Electronic data logger,	$0 - 50^{\circ}\text{C}$,
Temperature,	$0 - 98\% \text{ RH}$
Humidity	
Rated power	850 Watt
Number of shelves	10

Product Sheet

www.ele.com
+44 (0) 01525 249 200



Weight

200 kg

Accessories



Data Logger for Humidity Cabinet to EN 196 320 Litre capacity

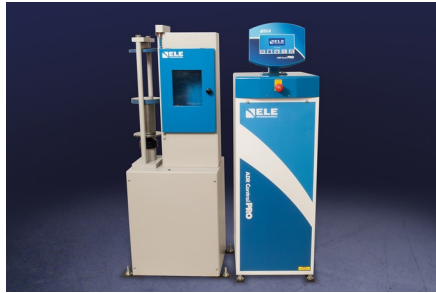
Code: [39-1300/24](#)

Alternatives



Humidity Cabinet BS EN 150 Litre Capacity 50Hz

Code: [39-1600/01](#)



ADR Touch Control Pro 250/25 Auto Cement Machine

Code: 39-7160/01

Product Group: Activity Index, ADR Touch Control Pro 250/25 Auto Cement Machines

- 250 kN maximum capacity
- Calibration accuracy to BS EN ISO 7500-1; ASTM E4
- Automatic loading cycle
- 25 kN low capacity frame supplied as standard
- Tests a wide variety of specimen sizes
- Tests mortar, lime, cement and Fly Ash
- Complete with compression/flexural jigs and platen sets
- Supplied with Windows(R) download software as standard

The ADR Touch Control Pro 250/25 Machine provides consistent automatic testing of a wide range of specimens. The machine comprises a standard ELE 250/25 kN load frame and the new ADR Touch Control Pro console and incorporates all the features included in the ADR Touch Control Pro series concrete testing machines.

As standard the machine is supplied with platens fitted to the load frame, compression jig with 40 mm and 50mm/2 inch square platen sets and flexural jig for testing 40.1 x 40 x 160 mm prisms.

The availability of the 25 kN low capacity load frame as standard extends the test capability of the machine for low strength compression or flexural testing.

Standards

EN 196-1, EN 459-2, EN 1744, EN 1015-11, EN 13454-2, BS 3892-1, BS 4551-1, ASTM C109, ISO 679

Further Information

****Not available for sale in the USA****

The ADR Touch Control Pro will deliver all the features and quality of the established ADR-Auto range, with its 20 year history, but with a new sleek design and additional capabilities. The console assembly consists of an ADR Touch Control Pro and power base which can be used with all existing concrete and cement frames

USER INTERFACE

The new ADR Touch Control Pro has an improved user interface providing a high quality platform

for testing that will enhance the performance of our compression machines. It now has a larger 7-inch colour touch screen with a higher definition display, allowing easier observation of test progress. A favourites option is also available, allowing users to save the most common set-ups for immediate access, without the need for navigating through selection menus.

USER FLEXIBILITY

The ADR Touch Control Pro has a unique flexible head with rotation capabilities of 75-degrees and a 45-degree tilt, improving usability and comfort for individual users. It is available with four languages English, Spanish, Portuguese and French, making it even more user-friendly and accessible to a wider audience. The new LAN connectivity feature lets the operator use the PC based APP (ELE Logger) to download test results away from the test area. User flexibility has also increased with the new ADR Touch Control Pro as it can now be operated remotely, so tests can be initiated away from the test area. Many issues can be resolved quickly by our service team through the new remote diagnostics feature and updating to the latest version of software has never been easier.

COMPATIBILITY

The all new dual sensor capabilities allow users to test both concrete and cement samples on one frame. The ADR Touch Control Pro is compatible with all existing compression frames and upgrade kits are also available. The upgrade kits can be used to convert existing ADR-Auto consoles to the new Automatic Digital Control Readout.

TESTING TIMES

The new generation ADR Compression Machines have an increased control over the pace rate, which allows users to run the pace rate higher than average, but still within standard. This produces an average time saving of 10% for a typical 150mm cube sample.

ELECTRICAL

Reduced component count and no wire design results in increased reliability and serviceability. New low voltage interlocks and e-stop has increased safety. The ADR Touch Control Pro has the latest Arm Core Processor technology which has improved the processing power and speed.

Accessories



40mm Square Platen Set

Code: [39-5600/10](#)



Impact Printer Rs232 Serial Connection. Supplied Complete with 1 Paper Roll.

Code: [37-4859/01](#)



Pair of Square Platens 2"

Code: [39-5600/11](#)



Set of Distance Pieces

Code: [39-6220](#)

Spares/Consumables



Compression Frame Jig Assembly

Code: [39-5600](#)



Flexural Jig Assembly

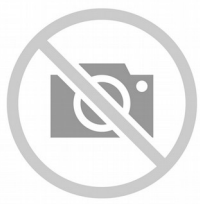
Code: [39-6160](#)

Alternatives



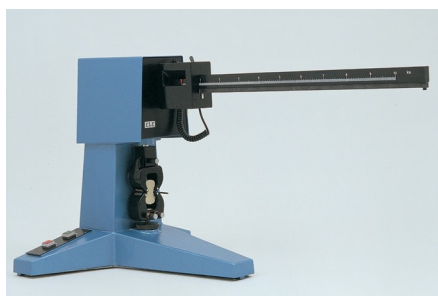
ADR Touch Control Pro 250/25 Auto Cement Machine

Code: [39-7160/06](#)



ADR Touch Manual with 250kN Frame and Jig 220-240v 50/60Hz

Code: [36-6166/01](#)



10kN Flexural/Tensile Testing Machine

Code: [39-7100/01](#)

Product Group: [10 kN Flexural/ Tensile Testing Machine](#)

This single lever machine is designed for flexural tests on 40.1 x 40 x 160 mm mortar prisms and tensile tests on mortar briquettes. The rate of applied loading for flexural testing is to EN196-1. Load is applied by a weight travelling along the beam at a constant rate, driven by a motor/gearbox. Readings are made by means of a cursor visible through a window in the moving weight. Failure of a specimen triggers a switch mechanism and brings the weight to a halt immediately. To prevent overloading, a sensor is incorporated in the weight and automatically stops the machine at its maximum capacity of 10 kN. Supplied complete with flexural and tensile jaws.

Standards

EN 196-1

Further Information

****NOT AVAILABLE FOR SALE IN THE USA****

For 220 - 240 V AC, 50 Hz, 1 ph.

Accessories



Briquette Mould

Code: [39-1000](#)



ELE Flame Photometer

Code: [38-0200/01](#)

Product Group: [ELE Flame Photometer](#)

Special Note: The Flame Photometer requires a source of moisture-free air at 6 litres/minute at a pressure of 1 kg/cm². It also requires a fuel source for the flame and a regulator (see accessories).

Standards

EN 196-21, ASTM C114, TEST 17

Further Information

****NOT AVAILABLE FOR SALE IN THE USA****

For 220-240 V AC, 50-60 Hz, 1 ph

Specification

Dimensions (l x w x h)	420 x 360 x 300 mm
Readout	LED three 12.5 mm digits
Sensitivity Na	3 to 100 ppm
K	3 to 100 ppm
Ca	5 to 100 ppm (optional filter)
Reproducibility	1% CV for 20 consecutive samples using 10 ppm, set to read 100
Recorder Output	Nominal 1.00 V for a reading of 100.0
Weight	8 kg

Accessories



Air Compressor

Code: [38-0320/01](#)



Barium Filter

Code: [38-0260](#)



Calcium Filter

Code: [38-0250](#)



Regulators for Natural Gas

Code: [38-0270](#)



Regulators for Propane Gas

Code: [38-0280](#)