



IF IT'S WORTH BUILDING, IT'S WORTH TESTING

This wishlist was generated on 11/05/2018, and contains the following Products:

23-7150

**Soil Colour Chart Set**

23-6191/01

**Bench-Mounting Mixer 5 Litre Capacity Complete with Bowl Beater and Whisk. 220-240V 50Hz 1Ph.**

23-4090

**38mm Hand Operated Hydraulic Sample Extruder with Trimming Knife 38mm Split Former & Cutting Tool.**

23-4250

**Cbr/Core Cutter Extruder Frame and Hydraulic Jack Extrudes 150mm/6 Inch Diameter Specimens.**

23-4200

**Proctor/Core Cutter Extruder Frame and Hydraulic Jack. Extrudes 100mm/4 Inch Diameter Specimens**

23-5800

**Hand Operated Soil Lathe for 38mm Dia Specimens Up to 100mm Long.**

23-5802

**1.4" and 2.8" Hand Specimen Trimmer**

23-1501

**100mm Dia Soil Auger Head**

23-1577

**38mm Diameter Sample Tube 230mm Long Complete with End Caps.**

23-3050

**Riffle Box 13mm Slot Width Complete with Three Containers.**

23-3425

**Large Capacity Sample Splitter.**

23-3505

**Mortar and Pestle Porcelain.**

23-7462

**Speedy Moisture Tester G2 Large 0-50% Moisture Range. Supplied Less Calcium Carbide**

---

23-7502

**Speedy Moisture Tester D2 Small 0-20% Moisture Range. Supplied Less Calcium Carbide**

---

23-7452

**Speedy Moisture Tester D2 Large 0-20% Moisture Range. Supplied Less Calcium Carbide**

---

78-1215/01

**50 Litre Drying Oven**

---

78-1225/01

**100 Litre Drying Oven**

---

78-1250/01

**225 Litre Drying Oven**

---

24-0811

**Rod Comparator**

---

24-0430

**Glass Plate.**

---

24-0434

**Liquid Limit Device ASTM/ Aashto Hand-Operated W/ Revolution Counter. Supplied Less Grooving Tool.**

---

24-0417/01

**Motorised Liquid Limit Device W/ Counter BS 220-240V 50Hz 1Ph.**

---

24-0540

**Cone Penetrometer. Complete with Stainless Steel Test Cone.**

---

24-0545/01

**Semi-Automatic Cone Penetrometer**

---

24-1500

**Prong Plate.**

---

24-1550

**Shrinkage Dish.**

---

24-1600

**Glass Cup.**

---

---

82-2000

**Evaporating Dish - 150 x 45 mm**

---

24-1800

**Shrinkage Mould to BS 1377**

---

81-0588

**Vernier Caliper Range 0 to 200mm X 0.02mm.**

---

24-2854/01

**Mechanical End-Over-End Shaker Ce**

---

24-2830

**Gas Jar 75mm Dia X 300mm with Glass Cover and Rubber Bung.**

---

24-2900

**50MI Density Bottle with Perforated Stopper.**

---

24-2950

**100MI Density Bottle with Perforated Stopper.**

---

24-2885

**Pyknometer Complete with Non-Corrodable Cone and Rubber Seal 1Kg Capacity**

---

24-2890

**Density Bottle 25MI.**

---



## Soil Colour Chart Set

Code: **23-7150**

Product Group: **Soil Colour Charts, Soil Color Charts**

The Munsell Soil Color Charts is an affordable way to evaluate the type of soil that is present within a given area. The book is set up to allow users to make soil color evaluations in the field quickly and easily. The soil classification system that has been developed around the Munsell color system is an established and accepted process to assign a soil type. This classification system has been used in the United States for more than 55 years to aid in the management and stewardship of natural resources. Through the use of the Munsell Soil Color Charts, practitioners from a wide range of professions can share reliable and consistent information about the color of soils at a particular site with colleagues anywhere around the world. The Munsell Soil Color Charts are used by a variety of industries and professions such as universities and high schools, forestry, forensics, environmental and soil science, building and contracting, landscaping, real estate, health departments, geology and archaeology.

## Further Information

The following pages are included in the Munsell Soil Color Charts:

- Munsell 10R Soil Chart
- Munsell 10YR Soil Chart
- Munsell 2.5Y Soil Chart
- Munsell 2.5YR Soil Chart
- Munsell 5Y Soil Chart
- Munsell 5YR Soil Chart
- Munsell 7.5YR Soil
- 10Y - 5GY Colors - Olive greens Soil Chart
- Gley 1 & 2 (2 - Separate Charts) Soil Charts
- Munsell 5R Individual Soil Chart
- Munsell 7.5R Individual Soil Chart
- "New" White Page, 7.5R, 10YR, & 2.5Y

## Specification

Munsell Book of Soil Color Charts

Durable binder contains 440 Munsell Color Standards

- Featuring ISCC-NBS color names
- Munsell alpha-numeric notation

Color produced on water resistant substrate

Features Munsell notations for each color providing:

- Value (degree of lightness)
- Hue (color)
- Chroma (degree of saturation)

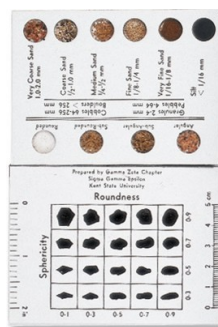
Used with medium, fine-grained, and coarse-grained rocks

Pages are cleanable and can be exposed to standard environmental conditions in the field

Dimensions

- Binder Size 150 mm x 196 mm x 25 mm
- Page Size 111 mm x 184 mm
- Weight 0.9 kg

## Alternatives



## Sand Grading Chart

Code: [23-7130](#)





## Bench-Mounting Mixer 5 Litre Capacity Complete with Bowl Beater and Whisk. 220-240V 50Hz 1Ph.

Code: [23-6191/01](#)

Product Group: [Sample Mixers](#), [Mixing](#), [Sample Mixers](#)

The mixer has two electrically switched mixing speeds which obviates the need to switch off during speed selection. The mixing head comprises a beater which contra-rotates about a central shaft using planetary gearing. A lever-acting lifting device facilitates the insertion and removal of the bowl. This mixer is suitable for the mixing of soil samples, mortar, bituminous mixtures and associated materials where comparatively small samples are being prepared. Supplied with stainless steel bowl, beater and whisk.

## Standards

BS 598-107, BS 1377-1, BS 1924-1

## Further Information

**\*\*NOT AVAILABLE FOR SALE IN THE USA\*\***

## Specification

Dimensions	545 x 380 x 550 mm
Beater Speeds (rpm) low, intermediate, high	136, 281, 580
Central shaft speeds (rpm) low, high	60, 124, 255
Rated power	500 W
Weight	20.2 kg

## Accessories



## Isomantle Electric Heater

Code: [45-5580/01](#)

## Spares/Consumables



### **Stainless Steel Bowl 4.73 Litres.**

Code: [23-6191/10](#)





## 38mm Hand Operated Hydraulic Sample Extruder with Trimming Knife 38mm Split Former & Cutting Tool.

Code: [23-4090](#)

Product Group: [Soil Extruders](#)

This Sample Extruder comprises a vertically mounted lever action hydraulic jack, with the body extended to form a chamber which accommodates a 38 mm diameter sample tube. Supplied complete with trimming knife, 38 mm split former and wire saw.

Standards  
BS 1377-1

## Alternatives



### Cbr/Core Cutter Extruder Frame and Hydraulic Jack Extrudes 150mm/6 Inch Diameter Specimens.

Code: [23-4250](#)



### Proctor/Core Cutter Extruder Frame and Hydraulic Jack. Extrudes 100mm/4 Inch Diameter Specimens

Code: [23-4200](#)



## Cbr/Core Cutter Extruder Frame and Hydraulic Jack Extrudes 150mm/6 Inch Diameter Specimens.

Code: [23-4250](#)

Product Group: [Soil Extruders](#)

Comprises a frame and hydraulic jack with adaptor plate supplied. Extrudes samples from BS CBR Mould and ASTM CBR Mould.

## Standards

BS 1377-1

## Accessories



## Adaptor Plate for 23-4250 to Extrude 100mm/4 Inch Diameter and Marshall Specimens.

Code: [23-4300](#)

## Alternatives



## 38mm Hand Operated Hydraulic Sample Extruder with Trimming Knife 38mm Split Former & Cutting Tool.

Code: [23-4090](#)



## Proctor/Core Cutter Extruder Frame and Hydraulic Jack. Extrudes 100mm/4 Inch Diameter Specimens

Code: 23-4200



## Proctor/Core Cutter Extruder Frame and Hydraulic Jack. Extrudes 100mm/4 Inch Diameter Specimens

Code: 23-4200

Product Group: Soil Extruders, Accessories for manual and automatic compaction

Adaptor plates will be supplied; extrudes samples from BS Compaction Mould, Proctor Mould 100 mm, Core Cutter and Marshall Mould. Maximum extrusion force 20kn.

## Standards

BS 1377-1

## Further Information

\*\*NOT AVAILABLE FOR SALE IN THE USA\*\*

## Accessories

### Steel Block

Code: 45-6463



## Alternatives



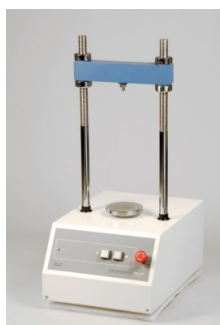
## 38mm Hand Operated Hydraulic Sample Extruder with Trimming Knife 38mm Split Former & Cutting Tool.

Code: [23-4090](#)



## Cbr/Core Cutter Extruder Frame and Hydraulic Jack Extrudes 150mm/6 Inch Diameter Specimens.

Code: [23-4250](#)



## Marshall Test 50

Code: [45-6810/01](#)



## Marshall Test 50

Code: [45-6810/06](#)



## Hand Operated Soil Lathe for 38mm Dia Specimens Up to 100mm Long.

Code: 23-5800

Product Group: Soil Lathes, Soil Trimmers (Lathes)

For producing 38 mm diameter specimens. The lathe platen is adjustable in height and will accept specimens up to 100 mm in length.

## Standards

BS 1377-1

## Further Information

- Lightweight frame construction for both laboratory and field use.
- Sturdy plated steel uprights serve as guides for wire saw during final trimming procedure.
- Adjustable upper platen trimming for various sample heights.

Wire Saw and other trimming accessories not included; order separately.

## Accessories



### Trimming Knife

Code: 81-0710

## Alternatives





## 1.4" and 2.8" Hand Specimen Trimmer

Code: 23-5802



## 1.4" and 2.8" Hand Specimen Trimmer

Code: [23-5802](#)

Product Group: [Soil Lathes, Soil Trimmers \(Lathes\)](#)

Specimen Trimmers are designed to simplify precision trimming of soil samples for triaxial, shear, unconfined compression, and other tests requiring standard cylindrical specimens. This trimming frame is supplied complete with vane type grips for both 1.4" (35 mm) and 2.8" (70 mm) diameter specimens, and a narrow wire saw.

### Further Information

- Lightweight frame construction for both laboratory and field use.
- Sturdy plated steel uprights serve as guides for wire saw during final trimming procedure.
- Samples are held securely during trimming through vane type grips.
- Adjustable upper gripper platen for various sample heights.
- Plated steel uprights and gripper assemblies for rust resistance and long life.

Includes Wire Saw.

### Specification

Sample Size.	Trims samples to either 1.4" (35 mm) or 2.8" (70 mm) diam.
Uprights.	Positioned to guide wire saw to control final sample diam; plated steel.
Sample Grips.	Vane type; hold sample during trimming; plated steel.
Overall Dimensions.	7" w. x 5" d. x 14" h. (178 x 127 x 356 mm).
Weight.	Net 16 lbs. (7.3 kg).

### Accessories



#### Trimming Knife

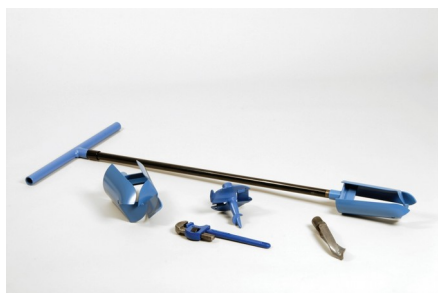
Code: [81-0710](#)

### Alternatives



## Hand Operated Soil Lathe for 38mm Dia Specimens Up to 100mm Long.

Code: [23-5800](#)



## 100mm Dia Soil Auger Head

Code: [23-1501](#)

Product Group: [Soil and Gravel Auger Heads](#)

Constructed of heavy-duty steel plates; partly interlocked at the cutting end and suitable for cohesive soils.

## Accessories



## 38mm Diameter Sample Tube 230mm Long Complete with End Caps.

Code: [23-1577](#)



## Extension Rod 27mm Diameter 1m Long. for Use with Auger Heads

Code: [23-1541](#)



## Handle and T Piece for Use with EL23-1541.

Code: [23-1547](#)



## Jarring Link for Driving Sample Tubes.

Code: [23-1587](#)



## Spiral Auger 40mm Diameter. One Piece Model

Code: [23-1617](#)



## Stillson Wrench Size 14.

Code: [23-1543](#)

---

### Alternatives



## 150mm Dia Gravel Auger Head.

Code: [23-1517](#)



## 150mm Dia Soil Auger Head

Code: [23-1504](#)



## 50mm Dia Dutch Soil Auger Head.

Code: [23-1525](#)



## **38mm Diameter Sample Tube 230mm Long Complete with End Caps.**

Code: [23-1577](#)

Product Group: [Extension Rods, Handles and Tools](#)

Supplied without Adaptor, but with two end caps





## Riffle Box 13mm Slot Width Complete with Three Containers.

Code: [23-3050](#)

Product Group: [Riffle Boxes \(Sample Dividers\)](#)

Manufactured from heavy-gauge sheet metal. BS recommended maximum particle size of 8.5 mm. EN recommended maximum particle size of 6.5 mm. Includes 12 slots each with a 13 mm slot width and an overall approximate capacity of 2 litres.

## Standards

BS 1377, BS 1924, BS 812, EN 932-1

## Specification

Recommended max particle size BS	8.5
Recommended max particle size EN	6.5
Slot width mm	13
No. of slots	12
Approx. capacity kg	2
Weight kg	6

## Alternatives



## Riffle Box 15mm Slot Width Complete with Three Containers.

Code: [23-3070](#)



## Riffle Box 19mm Slot Width Complete with Three Containers.

Code: [23-3100](#)



## Riffle Box 25mm Slot Width Complete with Three Containers.

Code: [23-3150](#)



## Riffle Box 30mm Slot Width Complete with Three Containers.

Code: [23-3170](#)



## Riffle Box 38mm Slot Width Complete with Three Containers.

Code: [23-3200](#)



## Riffle Box 50mm Slot Width Complete with Three Containers.

Code: [23-3300](#)



## Riffle Box 64mm Slot Width Complete with Three Containers.

Code: [23-3350](#)



## Riffle Box 7mm Slot Width Complete with Three Containers.

Code: [23-3000](#)



## Large Capacity Sample Splitter.

Code: 23-3425

Product Group: Large Capacity Sample Splitter, Large Sample Splitter

The splitter is designed for the reduction of test samples which are too large in volume to be conveniently handled. It divides samples so that half is representative of the original total sample and handles material up to 6 inches in particle size.

The lever-actuated unit is constructed of heavy gauge welded steel with a hopper which holds up to 1 cuft. The single splitter chute provides wide flexibility in sizes of opening and adjustment is provided for chutes of 0.5, 1.5, 2, 3, 4 or 6 inch by positioning of the chute bars. Overall height is approximately 1 meter. Hopper size 735 mm long x 480 mm wide (approx).

## Further Information

Complete with 2 material pans and a bag-loading chute.

[1] Splitter Designed For The Reduction Of Test Samples Which Are Too Large In Volume To Be Conveniently Handled.

[2] Handles Samples Up To 6 Inch Diameter.

[3] Wide Flexibility In Size Of Opening And Adjustment Is Provided For Chutes Of 0.5 1.5 2 3 4 Or 6 Inch By Positioning Of The Chute Bars.

[4] Lever Actuated Unit.

[5] Heavy Gauge Welded Steel Construction.

[6] Hopper Holds Up To One Cubic Ft.

[7] Single Splitter Chute.

[8] Hopper Size 735 X 480Mm Approx.

[9] 2 Material Pans.

[10] Bag Loading Chute.

## Specification

Capacity	1 cu. ft. (0.028 m3); for sand sizes up to 4" (102 mm).
Hopper	Lever-actuated, clamshell design.
Chute Bars	48 aluminum bars, 1/2" (13 mm) width.

# Product Sheet

www.ele.com  
+44 (0) 01525 249 200



Chute Area	24 " (610 mm) overall width.
Chute Openings	Adjustable; 1/2", 1", 1-1/2", 2", 3", 4", or 6".
Frame	Welded, heavy-gage steel.
Chute Attachment	Replaces pan to allow sample collection in bag; 28-1/4" l. x 7"w. x 5-1/2" h. (718 x 178 x 140 mm).
Material Pans	Two included; 25 -3/4" l. x 9" w. x 6-1/2" h. (654 x 229 x 165 mm).
Overall Dimensions	29" l. x 19" w. x 39" h. (737 x 483 x 999 mm).
Weight	Shpg. 142 lbs. (64 kg).

## Accessories



### Sample Bag - 10" x 18" (254 x 457 mm)

Code: [23-1420](#)



### Sample Bag - 17" x 32" (432 x 813 mm)

Code: [23-1422](#)

## Alternatives



### Large Capacity Sample Splitter.

Code: [23-3425](#)



## Sample Splitter (Riffle Box) - 14 chutes, 1/2" (13 mm) chute width

Code: [23-3052](#)

---



## Sample Splitter (Riffle Box) - 14 chutes, 3/4" (19 mm) chute width

Code: [23-3102](#)

---



## Sample Splitter (Riffle Box) - 16 chutes, 1" (25 mm) chute width

Code: [23-3152](#)

---



## Sample Splitter (Riffle Box) - 8 chutes, 2-1/2" (64 mm) chute width

Code: [23-3352](#)

---



## Sample Splitter (Riffle Box) - 8 chutes, 2" (51 mm) chute width

Code: [23-3302](#)



## Mortar and Pestle Porcelain.

Code: [23-3505](#)

Product Group: [Sample Reduction](#)

Thick walled porcelain mortar; 107mm internal diameter and porcelain pestle.

## Alternatives



## Heat of Hydration Apparatus

Code: [38-4600/01](#)



## Heat of Hydration Apparatus

Code: [38-4600/06](#)



## Rubber Headed Pestle.

Code: [23-3500](#)





## Speedy Moisture Tester G2 Large 0-50% Moisture Range. Supplied Less Calcium Carbide

Code: [23-7462](#)

Product Group: [Rapid method by Speedy Moisture Tester](#), [Rapid method by Speedy Moisture Tester](#)

Uses a technique based on the fact that water will react with calcium carbide to form a gas and that the quantity of gas formed is directly proportional to the water present. The gas pressure is indicated on a built-in pressure gauge. The pressure gauge calibrated in percentage of moisture. Has a moisture range of 0-50% with gauge divisions every 0.5%. Holds a sample size of 8 g. Includes an electronic balance of 200 g capacity x 0.1 g readability and is supplied in plastic carrying case.

## Standards

ASTM D4944, AASHTO T217

## Further Information

**\*\*NOT AVAILABLE FOR SALE IN THE USA\*\***

## Specification

Model	G2 Large
Moisture Range	0 to 50%
Gauge divisions	0.50%
Sample weight g	8
Weight complete kg	7.5

## Accessories



## Calcium Carbide Powder 500G.

Code: [23-7700](#)



## Reagent for Speedy Moisture Testers. Pack of 12 Cans 500 G Each. (Calcium Carbide)

Code: [23-7702](#)



## Speedy Calibration Unit Self Contained Unit.

Code: [23-7600](#)

### Alternatives



## Speedy Moisture Tester D2 Large 0-20% Moisture Range. Supplied Less Calcium Carbide

Code: [23-7452](#)



## Speedy Moisture Tester D2 Small 0-20% Moisture Range. Supplied Less Calcium Carbide

Code: [23-7502](#)



## Speedy Moisture Tester D2 Small 0-20% Moisture Range. Supplied Less Calcium Carbide

Code: [23-7502](#)

Product Group: [Rapid method by Speedy Moisture Tester](#), [Rapid method by Speedy Moisture Tester](#)

Uses a technique based on the fact that water will react with calcium carbide to form a gas and that the quantity of gas formed is directly proportional to the water present. The gas pressure is indicated on a built-in pressure gauge. The pressure gauge calibrated in percentage of moisture. Has a moisture range of 0-20% with gauge divisions every 0.2%. Holds a sample size of 6 g. Includes an electronic balance of 200 g capacity x 0.1 g readability and is supplied in plastic carrying case.

## Standards

ASTM D4944, AASHTO T217

## Further Information

**\*\*NOT AVAILABLE FOR SALE IN THE USA\*\***

## Specification

Model	D2 Small
Moisture Range	0 to 20%
Gauge divisions	0.20%
Sample weight g	6
Weight complete kg	5.5

## Accessories



## Calcium Carbide Powder 500G.

Code: [23-7700](#)



## Reagent for Speedy Moisture Testers. Pack of 12 Cans 500 G Each. (Calcium Carbide)

Code: [23-7702](#)



## Speedy Calibration Unit Self Contained Unit.

Code: [23-7600](#)

### Alternatives



## Speedy Moisture Tester D2 Large 0-20% Moisture Range. Supplied Less Calcium Carbide

Code: [23-7452](#)



## Speedy Moisture Tester G2 Large 0-50% Moisture Range. Supplied Less Calcium Carbide

Code: [23-7462](#)



## Speedy Moisture Tester D2 Large 0-20% Moisture Range. Supplied Less Calcium Carbide

Code: [23-7452](#)

Product Group: [Rapid Moisture Testers](#), [Rapid method by Speedy Moisture Tester](#), [Rapid method by Speedy Moisture Tester](#)

Uses a technique based on the fact that water will react with calcium carbide to form a gas and that the quantity of gas formed is directly proportional to the water present. The gas pressure is indicated on a built-in pressure gauge. The pressure gauge calibrated in percentage of moisture. Has a moisture range of 0-20% with gauge divisions every 0.2%. Holds a sample size of 20 g. Includes an electronic balance of 200 g capacity x 0.1 g readability and is supplied in plastic carrying case.

## Standards

BS 812, ASTM D4944, AASHTO T217

## Specification

Model	D2 Large
Moisture Range	0 to 20%
Gauge divisions	0.20%
Sample weight g	20
Weight complete kg	8.4

## Accessories



### Calcium Carbide Powder 500G.

Code: [23-7700](#)



### Reagent for Speedy Moisture Testers. Pack of 12 Cans 500 G Each. (Calcium Carbide)

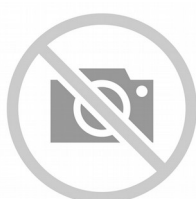
Code: [23-7702](#)



## Speedy Calibration Unit Self Contained Unit.

Code: [23-7600](#)

## Spares/Consumables



## Portable Electronic Balance

Code: [23-7452/12](#)

## Alternatives



## Speedy Moisture Tester D2 Small 0-20% Moisture Range. Supplied Less Calcium Carbide

Code: [23-7502](#)



## Speedy Moisture Tester G2 Large 0-50% Moisture Range. Supplied Less Calcium Carbide

Code: [23-7462](#)





## 50 Litre Drying Oven

Code: [78-1215/01](#)

Product Group: [Oven Drying Method](#), [Oven Drying Method](#), [Oven Drying Method](#)

## Standards

BS 2648, BS 598, BS 1377, BS 1924

## Further Information

**\*\*NOT AVAILABLE FOR SALE IN THE USA\*\***

## Alternatives



## 100 Litre Drying Oven

Code: [78-1225/01](#)



## 150 Litre Drying Oven

Code: [78-1235/01](#)



## 225 Litre Drying Oven

Code: [78-1250/01](#)



## Drying Oven 425 Litre Capacity

Code: [78-0135/01](#)



## 100 Litre Drying Oven

Code: [78-1225/01](#)

Product Group: [Oven Drying Method](#), [Oven Drying Method](#), [Oven Drying Method](#)

### Standards

BS 2648, BS 598, BS 1377, BS 1924

### Further Information

**\*\*NOT AVAILABLE FOR SALE IN THE USA\*\***

### Alternatives



## 150 Litre Drying Oven

Code: [78-1235/01](#)



## 225 Litre Drying Oven

Code: [78-1250/01](#)



## 50 Litre Drying Oven

Code: [78-1215/01](#)



## Drying Oven 425 Litre Capacity

Code: [78-0135/01](#)



## 225 Litre Drying Oven

Code: 78-1250/01

Product Group: Percentage Refusal Density (PRD),  
Oven Drying Method, Oven Drying Method, Oven  
Drying Method

## Standards

EN 12697-32, EN 13280-4, BS 598-104, BS 1377

## Specification

Capacity	225 litres
External Dimensions (l x w x h)	540 x 1040 x 940
Internal Dimensions (l x w x h)	440 x 920 x 600
Fluctuation	± 0.75°C
Rated power heater elements	2000 W
Shelves supplied	3
Shelf positions	4
Weight	80 kg

## Alternatives



## 100 Litre Drying Oven

Code: 78-1225/01



## 150 Litre Drying Oven

Code: 78-1235/01



## 50 Litre Drying Oven

Code: 78-1215/01



## Drying Oven 425 Litre Capacity

Code: [78-0135/01](#)



## Rod Comparator

Code: [24-0811](#)

Product Group: [Rod Comparator](#), [Determination of Plastic Limit](#)

3mm diameter rod comparator to BS1377.

## Standards

BS 1924-2, EN 1997-2, ASTM D4318, BS 1377, AASHTO T90



## Glass Plate.

Code: [24-0430](#)

Product Group: [Casagrande Method, Determination of Plastic Limit](#)

500 mm square x 10 mm thick.

## Standards

BS 1377-2



## Liquid Limit Device ASTM/ Aashto Hand-Operated W/ Revolution Counter. Supplied Less Grooving Tool.

Code: [24-0434](#)

Product Group: [Casagrande Method](#)

Complete with revolution counter. Supplied less grooving tool.

## Standards

ASTM D4318, AASHTO T89

## Accessories



### ASTM Metal Grooving Tool.

Code: [24-0453](#)



### Casagrande Grooving Tool Aashto

Code: [24-0461](#)



## Motorised Liquid Limit Device W/ Counter BS 220-240V 50Hz 1Ph.

Code: [24-0417/01](#)

Product Group: [Casagrande Method](#)

Complete with revolution counter and motor.

## Standards

BS 1377-2

## Accessories



### Glass Plate.

Code: [24-0430](#)



## Grooving Tool and Gauge B.S.

Code: [24-0425](#)

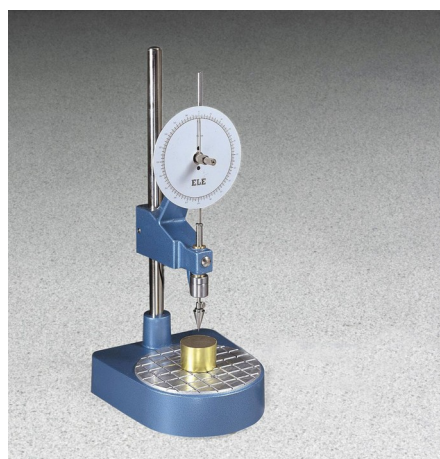
## Alternatives



## Liquid Limit Device BS with Counter. C/W Metal Grooving Tool & Test Gauge.

Code: [24-0410](#)





## Cone Penetrometer. Complete with Stainless Steel Test Cone.

Code: [24-0540](#)

Product Group: [Cone Penetrometer Method, Cone Penetrometer](#)

Bench mounted apparatus to determine the liquid limit of soils BS1377. This method is applicable to a wide range of soils. The apparatus is fitted with a 150mm diameter dial indicator for direct reading of penetration. Supplied complete with 30deg, 30mm long test cone. Manufactured from stainless steel and includes adjustable levelling feet.

## Standards

BS 1377-2

## Specification

Dial Indicator	150 mm diameter graduated in 400 x 0.1 mm divisions, indicator point incorporates friction/gear system
Height Adjustment	Rapid, using integral clamping mechanism
Cone release	Manual
Cone	1 x 30°, 35 mm test cone included
Base	Cast aluminium, adjustable levelling feet
Weight kg	7

## Accessories



### Penetration Test Cup.

Code: [24-0548](#)



## Test Gauge for Checking Condition of Cone Point.

Code: [24-0546](#)

---

### Spares/Consumables



## Penetration Test Cone

Code: [24-0544](#)

---

### Alternatives



## Semi-Automatic Cone Penetrometer

Code: [24-0545/01](#)



## Semi-Automatic Cone Penetrometer

Code: [24-0545/01](#)

Product Group: [Semi-Automatic Cone Penetrometer](#),  
[Semi-Automatic Cone Penetrometer](#)

Bench mounted apparatus to determine the liquid limit of soils to BS1377. This method is applicable to a wide range of soils. The apparatus is fitted with a 150mm diameter dial indicator for direct reading of penetration. Supplied complete with 30deg, 30mm long test cone. Manufactured from stainless steel and includes adjustable levelling feet.

Incorporates Digital Automatic controller, which releases the plunger head and ensures free falling of the penetration device during the test. The time set is displayed by a bright easy to read display.

## Standards

BS 1377, BS 1924-2, EN 1997-2

## Specification

Dial Indicator	150 mm diameter graduated in 400 x 0.1 mm divisions. Indicator incorporates a friction/gear system.
Height	Adjustable using rapid integral clamping mechanism.
Cone Release Cone	Semi-Automatic 1 x 30°, 35 mm test cone included.
Base	Cast aluminum with adjustable leveling feet.
Weight	Net 19 lbs. (8.64 kg).

## Accessories



### Penetration Test Cup.

Code: [24-0548](#)



## Test Gauge for Checking Condition of Cone Point.

Code: [24-0546](#)

---

## Spares/Consumables

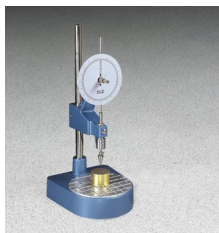


## Penetration Test Cone

Code: [24-0544](#)

---

## Alternatives



## Cone Penetrometer. Complete with Stainless Steel Test Cone.

Code: [24-0540](#)



## Prong Plate.

Code: [24-1500](#)

Product Group: [Volumetric Shrinkage](#), [Shrinkage Prong Plate](#)

Made of acrylic plastic fitted with three prongs, nominal 76 mm square and 2.4 mm thick.

## Standards

BS 1377, ASTM D427, AASHTO T92

## Specification

Construction	Acrylic plastic with 3 metal prongs.
Dimensions	3" square x 1/8" thick (76 x 3.2 mm).
Weight	Net 1 oz. (28 g).

## Accessories



### Evaporating Dish - 150 x 45 mm

Code: [82-2000](#)



### Measuring Cylinder - Glass 100 ml

Code: [82-0380](#)

---

## Alternatives



### Glass Cup.

Code: [24-1600](#)



### Shrinkage Dish.

Code: [24-1550](#)



## Shrinkage Dish.

Code: [24-1550](#)

Product Group: [Volumetric Shrinkage](#), [Shrinkage Prong Plate](#)

Nominal 42 mm diameter x 12 mm deep.

## Standards

ASTM D427, AASHTO T92

## Accessories



## Evaporating Dish - 150 x 45 mm

Code: [82-2000](#)



## Measuring Cylinder - Glass 100 ml

Code: [82-0380](#)

## Alternatives



## Glass Cup.

Code: [24-1600](#)



## Prong Plate.

Code: [24-1500](#)





## Glass Cup.

Code: [24-1600](#)

Product Group: [Volumetric Shrinkage](#), [Shrinkage](#)  
[Prong Plate](#)

Nominal 70 mm diameter x 50 mm deep.

## Standards

ASTM D427, AASHTO T92

## Accessories



## Evaporating Dish - 100 x 40 mm

Code: [82-1970](#)



## Measuring Cylinder - Glass 100 ml

Code: [82-0380](#)

## Alternatives



## Prong Plate.

Code: [24-1500](#)



## Shrinkage Dish.

Code: [24-1550](#)



## Evaporating Dish - 150 x 45 mm

Code: [82-2000](#)

Product Group: [Evaporating Dishes, Volumetric Shrinkage](#)

Shallow form with spout, porcelain 150 x 45 mm nominal diameter x height.

## Further Information

**\*\*NOT AVAILABLE FOR SALE IN THE USA\*\***



## Shrinkage Mould to BS 1377

Code: [24-1800](#)

Product Group: [Linear Shrinkage](#)

To produce a specimen 140 mm long x 12.5 mm radius.

## Standards

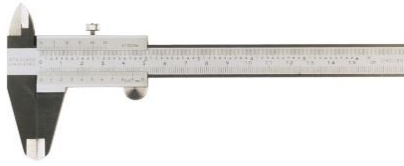
BS 1377

## Accessories



## Vernier Caliper Range 0 to 200mm X 0.02mm.

Code: [81-0588](#)



## Vernier Caliper Range 0 to 200mm X 0.02mm.

Code: [81-0588](#)

Product Group: [Determination of the Shape Index, Linear Shrinkage, Miscellaneous Laboratory Hardware](#)

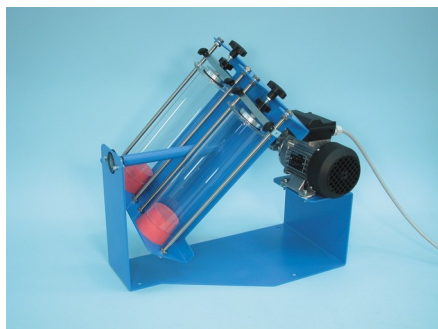
Vernier callipers 200 x 0.002mm. Graduated in mm and inches.

Gives four types of readings: inside, outside, depth and step. Dual reading scale (metric and inch) with 14° bevelled vernier scale for reduced parallax reading error and knurled locking nut. Manufactured from hardened stainless steel for rigidity. Satin finish.

Conforms to DIN 862.

## Standards

EN 933-4, BS 1377



## Mechanical End-Over-End Shaker Ce

Code: [24-2854/01](#)

Product Group: [Gas Jar Method](#)

With Friction Safety Device and Control Panel  
220-240V 50/60 Hz 1Ph.

Fitted with friction safety device, capable of rotating two EL24-2830 Gas Jars at approximately 50 rpm to satisfy BS 1377.

## Standards

BS 1377, EN 1997-2



## Gas Jar 75mm Dia X 300mm with Glass Cover and Rubber Bung.

Code: [24-2830](#)

Product Group: [Gas Jar Method](#)

1 litre capacity complete with rubber bung and glass cover.

## Standards

BS 1377, EN 1997-2

## Accessories



## Mechanical End-Over-End Shaker Ce

Code: [24-2854/01](#)



## 50ml Density Bottle with Perforated Stopper.

Code: [24-2900](#)

Product Group: [Particle Density: Pyknometer Methods](#)

Supplied complete with capillary vent stopper.  
Conforms to BS 733, and ISO 3507. Gay-Lussac type.

## Standards

ASTM C128, AASHTO T84

## Accessories



## 100ml Density Bottle with Perforated Stopper.

Code: [24-2950](#)



## Density Bottle 25ml.

Code: [24-2890](#)

## Alternatives



## 100ml Density Bottle with Perforated Stopper.

Code: [24-2950](#)



## Density Bottle 25ml.

Code: [24-2890](#)





## 100ml Density Bottle with Perforated Stopper.

Code: [24-2950](#)

Product Group: [Particle Density: Pyknometer Methods](#)

Supplied complete with capillary vent stopper.  
Gay-Lussac type.

## Standards

ASTM C128, AASHTO T84

## Accessories



## 50ml Density Bottle with Perforated Stopper.

Code: [24-2900](#)



## Density Bottle 25ml.

Code: [24-2890](#)

## Alternatives



## 50ml Density Bottle with Perforated Stopper.

Code: [24-2900](#)



## Density Bottle 25ml.

Code: [24-2890](#)



## Pyknometer Complete with Non-Corrodable Cone and Rubber Seal 1Kg Capacity

Code: [24-2885](#)

Product Group: [Particle Density: Pyknometer  
Methods, Pycnometer Top and Jar](#)

Glass jar complete with noncorrodible cone.

## Standards

BS 1377, BS 812-2, EN 1097-7, EN 1997-2, ASTM D854, AASHTO T100, ASTM C128, AASHTO T84

## Accessories



### 100MI Density Bottle with Perforated Stopper.

Code: [24-2950](#)



### 50MI Density Bottle with Perforated Stopper.

Code: [24-2900](#)



### Density Bottle 25ML.

Code: [24-2890](#)



## Pyknometer Gasket

Code: [24-2885/11](#)



## Pyknometer Jar Only

Code: [24-2885/10](#)



## Pyknometer Top

Code: [24-2885/12](#)

## Alternatives



## Sand Absorption Cone.

Code: [42-1700](#)



## Density Bottle 25ml.

Code: [24-2890](#)

Product Group: [Particle Density: Pyknometer Methods](#)

Supplied complete with capillary vent stopper.  
Gay-Lussac type.

## Standards

EN 1097-7, ASTM D854, AASHTO T100, ISO 3507

## Accessories



## 100ml Density Bottle with Perforated Stopper.

Code: [24-2950](#)



## 50ml Density Bottle with Perforated Stopper.

Code: [24-2900](#)

## Alternatives



## 100ml Density Bottle with Perforated Stopper.

Code: [24-2950](#)



## 50ml Density Bottle with Perforated Stopper.

Code: [24-2900](#)