



IF IT'S WORTH BUILDING, IT'S WORTH TESTING

This wishlist was generated on 25/05/2018, and contains the following Products:

29-4220

**200mm Calibrating Container 200mm Id X 250mm deep with a 350mm dia rim.**

29-4240

**Metal Tray 500mm Sq X 50mm deep with a 200mm dia hole.**

82-7401

**Standard Sand - 600/300 µm**

29-3720

**Dynamic Cone Penetrometer 8Kg Hammer (Trl Design).**

29-3800

**Plate Bearing Apparatus Complete. 500kN Capacity**

26-2261

**Pocket Shearmeter with 3 Vanes 0 to 1Kgf/Cm2 X 0.5Kgf/Cm2.**

81-0805

**Engineer's Steel Rule**

23-3505

**Mortar and Pestle Porcelain.**

79-3010

**450mm Dia. Lid**

79-3110

**450mm Dia BS Sieve 125 Mic Stainless Steel Mesh. Fitted with Reinforcing Mesh.**

79-3095

**450mm Dia BS Sieve 100 Mic Stainless Steel Mesh. Fitted with Reinforcing Mesh.**

79-3080

**450mm Dia BS Sieve 75 Mic Stainless Steel Mesh. Fitted with Reinforcing Mesh.**

79-3070

**450mm Dia BS Sieve 63 Mic Stainless Steel Mesh. Fitted with Reinforcing Mesh.**

---

79-3645

**450mm Dia BS Sieve 40 mm Stainless Steel Sieve. Perforated**

---

79-3640

**450mm Dia BS Sieve 37.5 mm Stainless Steel Sieve. Perforated**

---

79-3615

**450mm Dia BS Sieve 28 mm Stainless Steel Sieve. Perforated**

---

79-3605

**450mm Dia BS Sieve 25 mm Stainless Steel Sieve. Perforated**

---

79-3595

**450mm Dia BS Sieve 20 mm Stainless Steel Sieve. Perforated**

---

79-2640

**300mm Dia BS Sieve 37.5mm Perforated Plate.**

---

79-2630

**300mm Dia BS Sieve 31.5mm Perforated Plate.**

---

79-2615

**300mm Dia BS Sieve 28.0mm Perforated Plate.**

---

79-2605

**300mm Dia BS Sieve 25.0mm Perforated Plate.**

---

79-2595

**300mm Dia BS Sieve 20.0mm Perforated Plate.**

---

79-2580

**300mm Dia BS Sieve 16.0mm Perforated Plate.**

---

79-2575

**300mm Dia BS Sieve 14.0mm Perforated Plate.**

---

79-2555

**300mm Dia BS Sieve 10.0mm Perforated Plate.**

---

79-2540

**300mm Dia BS Sieve 8.00mm Perforated Plate.**

---

79-2525

**300mm Dia BS Sieve 6.30mm Perforated Plate.**

---

79-2515

**300mm Dia BS Sieve 5.00mm Perforated Plate.**

---

79-2500

**300mm Dia BS Sieve 4.00mm Perforated Plate.**

---

79-2300

**300mm Dia BS Sieve 3.35mm Stainless Steel Mesh.**

---

79-2070

**300mm Dia BS Sieve 63 Mic Stainless Steel Mesh. Fitted with Reinforcing Mesh.**

---

79-2020

**300mm Dia Receiver.**

---

79-7200

**Sieve Brush Brass and Nylon**

---

42-0600

**Set of Flakiness Sieves Comprising 1 Ea 4.9mm 7.2mm 10.2mm 14.4mm 19.7mm 26.3mm and 33.9mm**

---

78-1250/01

**225 Litre Drying Oven**

---

81-0240

**Shovel - With flat blade**

---

34-0192

**Slump Test Set BS & ASTM. C/W Slump Cone Base Plate Steel Rule Tamping Rod & Funnel.**

---



## 200mm Calibrating Container 200mm Id X 250mm deep with a 350mm dia rim.

Code: [29-4220](#)

Product Group: [Sand Replacement](#)

### Standards

BS 1377, BS 1924



## Metal Tray 500mm Sq X 50mm deep with a 200mm dia hole.

Code: [29-4240](#)

Product Group: [Sand Replacement](#)

## Standards

BS 1377, BS 1924



## Standard Sand - 600/300 µm

Code: [82-7401](#)

Product Group: [Sand Cone 6"](#), [Chemicals](#), [Test and Reference Materials](#)

Fraction C. No hazard. 20 kg.

## Further Information

**\*\*NOT AVAILABLE FOR SALE IN THE USA\*\***

## Accessories



### Density Plate for EL29-4300.

Code: [29-4340](#)

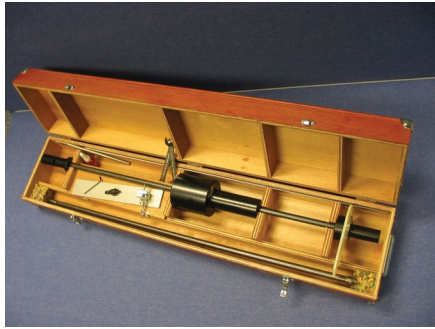
## Alternatives



### Density Plate for EL29-4300.

Code: [29-4340](#)





## Dynamic Cone Penetrometer 8Kg Hammer (Trl Design).

Code: [29-3720](#)

Product Group: [In-situ Testing](#)

The TRL (Transport Research Laboratory) Dynamic Cone Penetrometer (DCP) is used for rapid in-situ measurement of the structural properties of existing road pavement constructed with unbound materials. The unit incorporates an 8 kg weight with a drop of 575 mm, and a 20 mm diameter cone fitted to the end of the shaft, allowing measurements to be made down to a depth of approximately 850 mm.

Readings are usually taken after a set number of blows, changing the number according to the strength of the layer being penetrated. For good granular bases, readings every five to ten blows are satisfactory, but for weaker sub-base layers and subgrades, readings every one to two blows may be appropriate.

The DCP requires three operators, one to hold the instrument in a vertical position, one to raise the hammer and let it fall and one to record the results. A typical test takes only a few minutes, providing a very efficient method of obtaining information which would otherwise require the excavation of test pits. Where pavement layers have different strengths, boundaries can be identified and layer thickness determined.

## Further Information

Supplied complete with all necessary tools, assembly and operating instructions.

## Spares/Consumables



### Spare Cone for Dynamic Cone Penetrometer.

Code: [29-3720/10](#)





## Plate Bearing Apparatus Complete. 500kN Capacity

Code: 29-3800

Product Group: In-situ Testing, Plate Bearing Apparatus

Applications include the determination of bearing capacity of the soil in situ, designing for static loads on spread footings, and repetitive and non-repetitive plate loading tests of soils and flexible pavements.

Manufactured from machined steel plate with a finished thickness exceeding 25 mm. The plate has concentric markings on one face. All plates are supplied with two lifting eyes except for the 150 mm dia plate.

NOTE: to successfully perform the test, a reaction load is required.

IMPORTANT: The equipment is used in conjunction with a reaction beam. This is not supplied with the equipment.

## Standards

BS 1377, EN 1997-3, ASTM D1194, ASTM D1195, ASTM D1196

## Further Information

Comprising of:

- Hydraulic Jack 500 kN capacity
- Pressure system
- Datum bar
- 4x dial gauges 50 mm travel x 0.01 mm divisions
- 4x bearing plates: 150 mm, 305 mm, 455 mm and 760 mm diameter

## Specification

Loading jack	500 kN capacity with integral ball seating
Pump	Hand operated, single speed with integral oil reservoir
Hose	3 m long. Maximum pressure 70 MPa with quick release couplings
Gauge	100 mm dia with quick release couplings and graphs to convert readings to kN, kgf and

# Product Sheet

[www.ele.com](http://www.ele.com)  
+44 (0) 01525 249 200



Weights

lbf  
Loading jack 24 kg.  
Pressure system 12.5 kg



## Pocket Shearmeter with 3 Vanes 0 to 1Kgf/Cm2 X 0.5Kgf/Cm2.

Code: [26-2261](#)

Product Group: [Torvane Shear Device, Pocket Shearmeter](#)

The shearmeter can be used on tube samples, on the sides of pits, cuttings etc. It is an invaluable tool for initial site investigation work.

## Further Information

Complete with sensitive vane, standard vane and high-capacity vane. Range 0 to 1 x 0.05 kgf/cm2.

## Specification

Vane Driver	1.6" (41 mm) diam. x 3.2" (81 mm) l. with vane attached.
Dial Scale	1 kg/sq. cm (tons/sq. ft.) x 0.05 subdivisions.
Carrying Case	Plastic; 6" w. x 4" d. x 2" h. (152 x 102 x 51 mm).
Weight	Net 10.5 oz. (300 g).

## Spares/Consumables



### High-Capacity Vane

Code: [26-2261/14](#)



### Sensitive Vane

Code: [26-2261/10](#)



## Standard Vane

Code: [26-2261/12](#)

---

## Alternatives



## Digital Direct/Residual Shear Apparatus Complete with Lever Loading Assembly. 110-120V 50/60Hz 1Ph.

Code: [26-2114/02](#)



## Digital Direct/Residual Shear Apparatus Complete with Lever Loading Assembly. 220-240V 50/60Hz 1Ph.

Code: [26-2114/01](#)



## Hand Vane Tester

Code: [26-3346](#)



## Engineer's Steel Rule

Code: [81-0805](#)

Product Group: [Miscellaneous Laboratory Hardware](#)

## Further Information

**\*\*NOT AVAILABLE FOR SALE IN THE USA\*\***

## Accessories

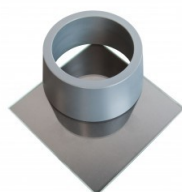
### ASTM Initial Set Needle

Code: [38-2620](#)



### ASTM Vicat Mould

Code: [38-2660](#)



## EN Initial and Final Set Needle

Code: [38-2110](#)



## Vibrating Hammer

Code: [47-0455/01](#)

## Spares/Consumables

### Consistency Plunger

Code: [38-2010/10](#)

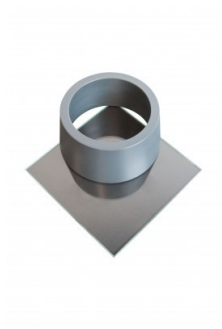


## Alternatives

### ASTM Initial Set Needle

Code: [38-2620](#)





## ASTM Vicat Mould

Code: [38-2660](#)



## EN Initial and Final Set Needle

Code: [38-2110](#)



## Vibrating Hammer

Code: [47-0455/01](#)





## Mortar and Pestle Porcelain.

Code: [23-3505](#)

Product Group: [Sample Reduction](#)

Thick walled porcelain mortar; 107mm internal diameter and porcelain pestle.

## Alternatives



## Heat of Hydration Apparatus

Code: [38-4600/06](#)



## Heat of Hydration Apparatus

Code: [38-4600/01](#)



## Rubber Headed Pestle.

Code: [23-3500](#)



## 450mm Dia. Lid

Code: [79-3010](#)

Product Group: [450mm Diameter BS Sieves](#)

## Further Information

**\*\*NOT AVAILABLE FOR SALE IN THE USA\*\***



### **450mm Dia BS Sieve 125 Mic Stainless Steel Mesh. Fitted with Reinforcing Mesh.**

Code: [79-3110](#)

Product Group: [450mm Diameter BS Sieves](#)

#### **Further Information**

**\*\*NOT AVAILABLE FOR SALE IN THE USA\*\***



### **450mm Dia BS Sieve 100 Mic Stainless Steel Mesh. Fitted with Reinforcing Mesh.**

Code: [79-3095](#)

Product Group: [450mm Diameter BS Sieves](#)

#### **Further Information**

**\*\*NOT AVAILABLE FOR SALE IN THE USA\*\***



### **450mm Dia BS Sieve 75 Mic Stainless Steel Mesh. Fitted with Reinforcing Mesh.**

Code: [79-3080](#)

Product Group: [450mm Diameter BS Sieves](#)

#### **Further Information**

**\*\*NOT AVAILABLE FOR SALE IN THE USA\*\***



### **450mm Dia BS Sieve 63 Mic Stainless Steel Mesh. Fitted with Reinforcing Mesh.**

Code: [79-3070](#)

Product Group: [450mm Diameter BS Sieves](#)

#### **Further Information**

**\*\*NOT AVAILABLE FOR SALE IN THE USA\*\***



## 450mm Dia BS Sieve 40 mm Stainless Steel Sieve. Perforated

Code: [79-3645](#)

Product Group: [450mm Diameter BS Sieves](#)

### Further Information

**\*\*NOT AVAILABLE FOR SALE IN THE USA\*\***





## 450mm Dia BS Sieve 37.5 mm Stainless Steel Sieve. Perforated

Code: [79-3640](#)

Product Group: [450mm Diameter BS Sieves](#)

### Further Information

**\*\*NOT AVAILABLE FOR SALE IN THE USA\*\***



## 450mm Dia BS Sieve 28 mm Stainless Steel Sieve. Perforated

Code: [79-3615](#)

Product Group: [450mm Diameter BS Sieves](#)

### Further Information

**\*\*NOT AVAILABLE FOR SALE IN THE USA\*\***



## 450mm Dia BS Sieve 25 mm Stainless Steel Sieve. Perforated

Code: [79-3605](#)

Product Group: [450mm Diameter BS Sieves](#)

### Further Information

**\*\*NOT AVAILABLE FOR SALE IN THE USA\*\***



## 450mm Dia BS Sieve 20 mm Stainless Steel Sieve. Perforated

Code: [79-3595](#)

Product Group: [450mm Diameter BS Sieves](#)

### Further Information

**\*\*NOT AVAILABLE FOR SALE IN THE USA\*\***



## 300mm Dia BS Sieve 37.5mm Perforated Plate.

Code: 79-2640

Product Group: 300mm Diameter BS Sieves, 300mm Diameter BS Sieves, 300mm Diameter BS Sieves

### Standards

BS 410-1, ISO 3310, ISO 565, EN933-2

### Further Information

**\*\*NOT AVAILABLE FOR SALE IN THE USA\*\***



## 300mm Dia BS Sieve 31.5mm Perforated Plate.

Code: 79-2630

Product Group: 300mm Diameter BS Sieves, 300mm Diameter BS Sieves, 300mm Diameter BS Sieves

### Standards

BS 410-1, ISO 3310, ISO 565, EN933-2

### Further Information

**\*\*NOT AVAILABLE FOR SALE IN THE USA\*\***



## 300mm Dia BS Sieve 28.0mm Perforated Plate.

Code: 79-2615

Product Group: 300mm Diameter BS Sieves, 300mm Diameter BS Sieves, 300mm Diameter BS Sieves

### Standards

BS 410-1, ISO 3310, ISO 565, EN933-2

### Further Information

**\*\*NOT AVAILABLE FOR SALE IN THE USA\*\***





## 300mm Dia BS Sieve 25.0mm Perforated Plate.

Code: 79-2605

Product Group: 300mm Diameter BS Sieves, 300mm Diameter BS Sieves, 300mm Diameter BS Sieves

### Standards

BS 410-1, ISO 3310, ISO 565, EN933-2

### Further Information

**\*\*NOT AVAILABLE FOR SALE IN THE USA\*\***



## 300mm Dia BS Sieve 20.0mm Perforated Plate.

Code: 79-2595

Product Group: 300mm Diameter BS Sieves, 300mm Diameter BS Sieves, 300mm Diameter BS Sieves

### Standards

BS 410-1, ISO 3310, ISO 565, EN933-2

### Further Information

**\*\*NOT AVAILABLE FOR SALE IN THE USA\*\***



## 300mm Dia BS Sieve 16.0mm Perforated Plate.

Code: 79-2580

Product Group: 300mm Diameter BS Sieves, 300mm Diameter BS Sieves, 300mm Diameter BS Sieves

### Standards

BS 410-1, ISO 3310, ISO 565, EN933-2

### Further Information

**\*\*NOT AVAILABLE FOR SALE IN THE USA\*\***



## 300mm Dia BS Sieve 14.0mm Perforated Plate.

Code: 79-2575

Product Group: 300mm Diameter BS Sieves, 300mm Diameter BS Sieves, 300mm Diameter BS Sieves

### Standards

BS 410-1, ISO 3310, ISO 565, EN933-2

### Further Information

**\*\*NOT AVAILABLE FOR SALE IN THE USA\*\***



## 300mm Dia BS Sieve 10.0mm Perforated Plate.

Code: 79-2555

Product Group: 300mm Diameter BS Sieves, 300mm Diameter BS Sieves, 300mm Diameter BS Sieves

### Standards

BS 410-1, ISO 3310, ISO 565, EN933-2

### Further Information

**\*\*NOT AVAILABLE FOR SALE IN THE USA\*\***



## 300mm Dia BS Sieve 8.00mm Perforated Plate.

Code: 79-2540

Product Group: 300mm Diameter BS Sieves, 300mm Diameter BS Sieves, 300mm Diameter BS Sieves

### Standards

BS 410-1, ISO 3310, ISO 565, EN933-2

### Further Information

**\*\*NOT AVAILABLE FOR SALE IN THE USA\*\***



## 300mm Dia BS Sieve 6.30mm Perforated Plate.

Code: 79-2525

Product Group: 300mm Diameter BS Sieves, 300mm Diameter BS Sieves, 300mm Diameter BS Sieves

### Standards

BS 410-1, ISO 3310, ISO 565, EN933-2

### Further Information

\*\*NOT AVAILABLE FOR SALE IN THE USA\*\*





## 300mm Dia BS Sieve 5.00mm Perforated Plate.

Code: 79-2515

Product Group: 300mm Diameter BS Sieves, 300mm Diameter BS Sieves, 300mm Diameter BS Sieves

### Standards

BS 410-1, ISO 3310, ISO 565, EN933-2

### Further Information

**\*\*NOT AVAILABLE FOR SALE IN THE USA\*\***



## 300mm Dia BS Sieve 4.00mm Perforated Plate.

Code: 79-2500

Product Group: 300mm Diameter BS Sieves, 300mm Diameter BS Sieves, 300mm Diameter BS Sieves

### Standards

BS 410-1, ISO 3310, ISO 565, EN933-2

### Further Information

\*\*NOT AVAILABLE FOR SALE IN THE USA\*\*



## 300mm Dia BS Sieve 3.35mm Stainless Steel Mesh.

Code: 79-2300

Product Group: 300mm Diameter BS Sieves, 300mm Diameter BS Sieves, 300mm Diameter BS Sieves

### Standards

BS 410-1, ISO 3310, EN933-2, ISO 565

### Further Information

\*\*NOT AVAILABLE FOR SALE IN THE USA\*\*



## 300mm Dia BS Sieve 63 Mic Stainless Steel Mesh. Fitted with Reinforcing Mesh.

Code: 79-2070

Product Group: 300mm Diameter BS Sieves, 300mm Diameter BS Sieves, 300mm Diameter BS Sieves

### Standards

BS 410-1, ISO 3310, EN933-2, ISO 565

### Further Information

\*\*NOT AVAILABLE FOR SALE IN THE USA\*\*



## 300mm Dia Receiver.

Code: 79-2020

Product Group: Sieve Lids and Receivers ISO and BS, 300mm Diameter BS Sieves, 300mm Diameter BS Sieves, 300mm Diameter BS Sieves

## Standards

BS 410-1, ISO 3310

## Further Information

**\*\*NOT AVAILABLE FOR SALE IN THE USA\*\***



## Sieve Brush Brass and Nylon

Code: [79-7200](#)

Product Group: [Sieve Brushes](#)

Double-ended, brass and nylon bristle

## Standards

ASTM E11

## Further Information

**\*\*NOT AVAILABLE FOR SALE IN THE USA\*\***



## Set of Flakiness Sieves Comprising 1 Ea 4.9mm 7.2mm 10.2mm 14.4mm 19.7mm 26.3mm and 33.9mm

Code: [42-0600](#)

Product Group: [Flakiness Sieves and Gauges](#)

Comprising of 1 each, 4.9 mm, 7.2 mm, 10.2 mm,  
14.4 mm, 19.7 mm, 26.3 mm and 33.9 mm.

## Standards

BS 813

## Further Information

**\*\*NOT AVAILABLE FOR SALE IN THE USA\*\***

## Alternatives



## Length Gauge

Code: [42-0820](#)



## 225 Litre Drying Oven

Code: 78-1250/01

Product Group: Percentage Refusal Density (PRD),  
Oven Drying Method, Oven Drying Method, Oven  
Drying Method

## Standards

EN 12697-32, EN 13280-4, BS 598-104, BS 1377

## Specification

Capacity	225 litres
External Dimensions (l x w x h)	540 x 1040 x 940
Internal Dimensions (l x w x h)	440 x 920 x 600
Fluctuation	± 0.75°C
Rated power heater elements	2000 W
Shelves supplied	3
Shelf positions	4
Weight	80 kg

## Alternatives



## 100 Litre Drying Oven

Code: 78-1225/01



## 150 Litre Drying Oven

Code: 78-1235/01



## 50 Litre Drying Oven

Code: 78-1215/01



# Product Sheet

[www.ele.com](http://www.ele.com)  
+44 (0) 01525 249 200



## Drying Oven 425 Litre Capacity

Code: [78-0135/01](#)



## Shovel - With flat blade

Code: [81-0240](#)

Product Group: [Scoops and Shovels](#)

## Further Information

**\*\*NOT AVAILABLE FOR SALE IN THE USA\*\***



## Slump Test Set BS & ASTM. C/W Slump Cone Base Plate Steel Rule Tamping Rod & Funnel.

Code: [34-0192](#)

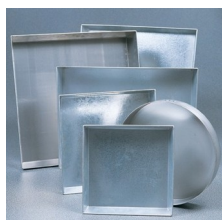
Product Group: [Slump Test](#)

BS and ASTM comprising of slump cone, base plate, steel rule, tamping rod and funnel.

## Further Information

**\*\*NOT AVAILABLE FOR SALE IN THE USA\*\***

## Accessories



### Sample Tray - 1200 x 1160 x 50 mm

Code: [81-4230](#)



### Shovel - With flat blade

Code: [81-0240](#)

## Spares/Consumables



### Stopwatch

Code: [81-0521](#)