



IF IT'S WORTH BUILDING, IT'S WORTH TESTING

This wishlist was generated on 07/06/2018, and contains the following Products:

81-0705

Wire Brush

82-7341

Mould Oil (25 Litre Drum)

38-1200

Le Chatelier Flask

39-0035/01

Automatic/Manual 5 litre nominal capacity Mortar Mixer

39-0060

Bowl Cover

39-0065

Scraper

39-7160/01

ADR Touch Control PRO 250/25 Auto Cement Machine

39-1100

Three-gang Mould

39-1120

Feeding Hopper

39-1130

Scraper

39-1150/01

Jolting Table 220 - 240 V 50 Hz

38-2010

Vicat Frame

38-2110

EN Initial and Final Set Needle

38-2300

EN Vicat Mould

Contents

www.ele.com
+44 (0) 01525 249 200



38-3005

Le Chatelier Mould

38-3205

Extensibility of Mould Apparatus EN

38-3420/01

Le Chatelier Water Bath

38-3300

Tamping Rod

39-1170

Mortar Sand



Wire Brush

Code: [81-0705](#)

Product Group: [Accessories for Concrete Moulds](#),
[Miscellaneous Laboratory Hardware](#)

Further Information

****Not available for sale in the USA****



Mould Oil (25 Litre Drum)

Code: [82-7341](#)

Product Group: [Accessories for Concrete Moulds,](#)
[Chemicals, Test and Reference Materials](#)

Further Information

****Not available for sale in the USA****



Le Chatelier Flask

Code: 38-1200

Product Group: Le Chatelier Flask, Specific Gravity (relative density) of Hydration Cement

For determining the density of hydraulic cement and lime, supplied complete with calibration certificate. Capacity 250ml. Graduated from 0 to 1ml and from 18 to 24ml graduations. Accurate to 0.05ml.

Standards

EN 196-6, ASTM C128, ASTM C188, E 694, AASHTO T133

Specification

Graduations

Zero mark represents 250 ml, the capacity of the large bulb; neck graduations from 0-1 ml in 0.1 ml divisions with two extra 0.1 ml graduations above the 1.0 and below the 0 marks; bulb portion of neck holds 17 ml; top portion of neck graduated from 18-24 ml in 0.1 ml divisions; 24 ml capacity.

Stopper

Ground glass.

Weight

Net 8 oz. (227 g).

Accessories



Chattaway Spatula 125 mm

Code: 81-0180



Electronic Balance - 620 g x 0.001 g

Code: [78-5405/01](#)



Water Bath - 12 litres

Code: [82-8500/01](#)



Automatic/Manual 5 litre nominal capacity Mortar Mixer

Code: 39-0035/01

Product Group: Automatic/Manual 5 Litre Nominal Capacity Mortar Mixer

- New Microprocessor control
- New mix program selector
- Complies with latest EN Standards update
- Choice of automatic mixing cycles
- Sand and water dispenser supplied as standard

This mixer is designed to mix mortars and cement pastes to the requirements of the above Standards. The mixing paddle has a planetary motion and is driven by a motor with a microprocessor based speed and program controller. The mixer can be operated either in an automatic or manual mode. When the mixer is used in the manual mode, the two mixing speeds can be changed by means of a rocker switch, without switching off the motor. In the automatic mode any one of the preset mixing programs may be selected.

Standards

EN 196-1, EN 196-3, EN 413-2, EN 459-2, EN 1744-1, EN 13279-2, EN 1015-2, EN 13395-1, EN 13454-2, ISO 679, BS 3892-1, BS 3892-3, BS 6463-103, BS 4551-1

Further Information

****NOT AVAILABLE FOR SALE IN THE USA****

Complete with bowl and paddle, sand and Water dispensers. For 220 - 240 V AC, 50 - 60 Hz, 1 ph.

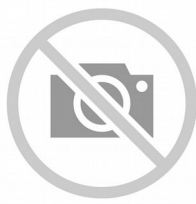
Specification

Dimensions (l x w x h)	530 x 350 x 580 mm
Speeds (rpm) Low, High	Paddle: 140 ± 5, 285 ± 10 Mixing Head: 62 ± 5, 125 ± 10
Rated Power	180 W
Bowl Capacity	5 litres approx.
Weight	54 kg

Accessories

Product Sheet

www.ele.com
+44 (0) 01525 249 200



Bowl Cover

Code: [39-0060](#)



Scraper

Code: [39-0065](#)

Spares/Consumables



Bowl

Code: [39-0031/11](#)



Paddle

Code: [39-0031/10](#)



Bowl Cover

Code: [39-0060](#)

Product Group: [Automatic/Manual 5 Litre Nominal Capacity Mortar Mixer](#)

Standards

EN 196-1, EN 196-3, EN 413-2, EN 459-2, EN 1744-1, EN 13279-2, EN 1015-2, EN 13395-1, EN 13454-2, ISO 679, BS 3892-1, BS 3892-3, BS 6463-103, BS 4551-1

Further Information

****NOT AVAILABLE FOR SALE IN THE USA****



Scraper

Code: [39-0065](#)

Product Group: [Automatic/Manual 5 Litre Nominal Capacity Mortar Mixer](#)

Plastic 200mm long. Pack of 5.

Standards

EN 196-1, EN 196-3, EN 413-2, EN 459-2, EN 1744-1, EN 13279-2, EN 1015-2, EN 13395-1, EN 13454-2, ISO 679, BS 3892-1, BS 3892-3, BS 6463-103, BS 4551-1

Further Information

****NOT AVAILABLE FOR SALE IN THE USA****



ADR Touch Control PRO 250/25 Auto Cement Machine

Code: 39-7160/01

Product Group: Activity Index, ADR Touch Control Pro 250/25 Auto Cement Machines

- 250 kN maximum capacity
- Calibration accuracy to BS EN ISO 7500-1; ASTM E4
- Automatic loading cycle
- 25 kN low capacity frame supplied as standard
- Tests a wide variety of specimen sizes
- Tests mortar, lime, cement and Fly Ash
- Complete with compression/flexural jigs and platen sets
- Supplied with Windows(R) download software as standard

The ADR Touch Control PRO 250/25 Machine provides consistent automatic testing of a wide range of specimens. The machine comprises a standard ELE 250/25 kN load frame and the new ADR Touch Control PRO console and incorporates all the features included in the ADR Touch Control PRO series concrete testing machines.

As standard the machine is supplied with platens fitted to the load frame, compression jig with 40 mm and 50mm/2 inch square platen sets and flexural jig for testing 40.1 x 40 x 160 mm prisms.

The availability of the 25 kN low capacity load frame as standard extends the test capability of the machine for low strength compression or flexural testing.

Standards

EN 196-1, EN 459-2, EN 1744, EN 1015-11, EN 13454-2, BS 3892-1, BS 4551-1, ASTM C109, ISO 679

Further Information

****Not available for sale in the USA****

The ADR Touch Control PRO will deliver all the features and quality of the established ADR-Auto range, with its 20 year history, but with a new sleek design and additional capabilities. The console assembly consists of an ADR Touch Control PRO and power base which can be used with all existing concrete and cement frames

USER INTERFACE

The new ADR Touch Control PRO has an improved user interface providing a high quality platform

for testing that will enhance the performance of our compression machines. It now has a larger 7-inch colour touch screen with a higher definition display, allowing easier observation of test progress. A favourites option is also available, allowing users to save the most common set-ups for immediate access, without the need for navigating through selection menus.

USER FLEXIBILITY

The ADR Touch Control PRO has a unique flexible head with rotation capabilities of 75-degrees and a 45-degree tilt, improving usability and comfort for individual users. It is available with four languages English, Spanish, Portuguese and French, making it even more user-friendly and accessible to a wider audience. The new LAN connectivity feature lets the operator use the PC based APP (ELE Logger) to download test results away from the test area. User flexibility has also increased with the new ADR Touch Control Pro as it can now be operated remotely, so tests can be initiated away from the test area. Many issues can be resolved quickly by our service team through the new remote diagnostics feature and updating to the latest version of software has never been easier.

COMPATIBILITY

The all new dual sensor capabilities allow users to test both concrete and cement samples on one frame. The ADR Touch Control PRO is compatible with all existing compression frames and upgrade kits are also available. The upgrade kits can be used to convert existing ADR-Auto consoles to the new Automatic Digital Control Readout.

TESTING TIMES

The new generation ADR Compression Machines have an increased control over the pace rate, which allows users to run the pace rate higher than average, but still within standard. This produces an average time saving of 10% for a typical 150mm cube sample.

ELECTRICAL

Reduced component count and no wire design results in increased reliability and serviceability. New low voltage interlocks and e-stop has increased safety. The ADR Touch Control PRO has the latest Arm Core Processor technology which has improved the processing power and speed.

Accessories



40mm Square Platen Set

Code: [39-5600/10](#)



Impact Printer Rs232 Serial Connection. Supplied Complete with 1 Paper Roll.

Code: [37-4859/01](#)



Pair of Square Platens 2"

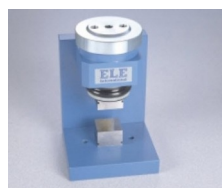
Code: [39-5600/11](#)



Set of Distance Pieces

Code: [39-6220](#)

Spares/Consumables



Compression Frame Jig Assembly

Code: [39-5600](#)



Flexural Jig Assembly

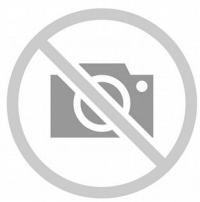
Code: [39-6160](#)

Alternatives



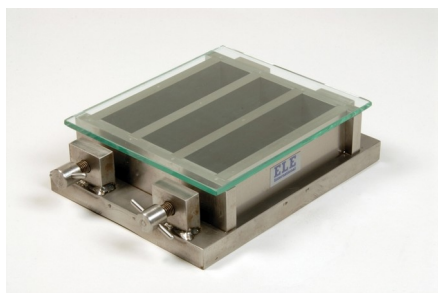
ADR Touch Control PRO 250/25 Auto Cement Machine

Code: [39-7160/06](#)



ADR Touch Manual with 250kN Frame and Jig 220-240v 50/60Hz

Code: [36-6166/01](#)



Three-gang Mould

Code: [39-1100](#)

Product Group: [Moulding of Prisms](#)

For 40.1 x 40 x 160 mm mortar prisms. This mould is manufactured to a very high specification. Supplied with glass plate.

Standards

EN 196-1, EN 413-2, EN 459-2, EN 1015-10, EN 13454-2, ISO 679, BS 3892-1, BS 4551-1

Further Information

****NOT AVAILABLE FOR SALE IN THE USA****

Accessories



Feeding Hopper

Code: [39-1120](#)

Spares/Consumables



Glass Plate

Code: [39-1100/10](#)



Mortar Sand

Code: [39-1170](#)

Alternatives

Product Sheet

www.ele.com
+44 (0) 01525 249 200



Feeding Hopper

Code: 39-1120



Feeding Hopper

Code: [39-1120](#)

Product Group: [Moulding of Prisms](#)

For 39-1100 Mould.

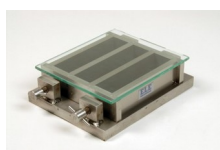
Standards

EN 196-1, EN 413-2, EN 459-2, EN 1744-1, EN 1015-10, EN 13454-2, ISO 679, BS 3892-1

Further Information

****NOT AVAILABLE FOR SALE IN THE USA****

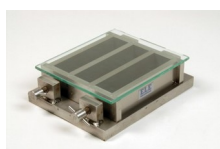
Accessories



Three-gang Mould

Code: [39-1100](#)

Alternatives



Three-gang Mould

Code: [39-1100](#)



Scraper

Code: [39-1130](#)

Product Group: [Moulding of Prisms](#)

Double-ended, used for spreading and levelling mortar in mould.

Standards

EN 196-1, EN 413-2, EN 459-2, EN 1744-1, EN 1015-10, EN 13454-2, ISO 679, BS 3892-1, BS 4551-1

Further Information

****NOT AVAILABLE FOR SALE IN THE USA****



Jolting Table 220 - 240 V 50 Hz

Code: [39-1150/01](#)

Product Group: [Jolting Table](#)

This machine consists of a mould table seated on a rotating cam driven at 60 revolutions per minute. The apparatus is supplied with a remote mains switch box, incorporating a push button start/stop control and automatic stop control at end of test.

Supplied without moulds.

Standards

EN 196-1, EN 413-2, EN 459-2, EN 1744-1, EN 1015-10, EN 1015-11, EN 13454-2, ISO 679, BS 3892-1, BS 4551-1

Further Information

****NOT AVAILABLE FOR SALE IN THE USA****

Specification

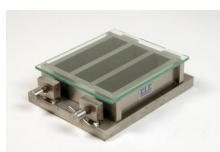
Motor rating	0.24 kW (1/3 hp)
Cam shaft RPM	60
Table lift	15 +/- 0.3 mm
Overall dimensions with swing bolts raised	(H x W x D) 340 x 400 x 1045 mm
Weight	90 kg

Accessories



Feeding Hopper

Code: [39-1120](#)



Three-gang Mould

Code: [39-1100](#)

Spares/Consumables



Mortar Sand

Code: [39-1170](#)



Scraper

Code: [39-1130](#)

Alternatives



Jolting Table 220 - 240 V AC 60 Hz

Code: [39-1150/06](#)



Vicat Frame

Code: [38-2010](#)

Product Group: [Vicat Method](#)

Complete with consistency plunger, 10 mm diameter.
Requires one initial or final set needle to make up test weight to 300g.

Standards

EN 196-3, EN 13454-2, ASTM C187, ASTM C191

Further Information

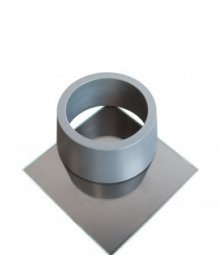
****NOT AVAILABLE FOR SALE IN THE USA****

Accessories

ASTM Initial Set Needle

Code: [38-2620](#)





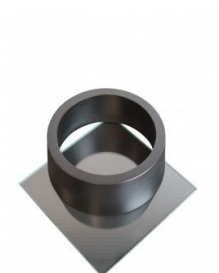
ASTM Vicat Mould

Code: [38-2660](#)



EN Initial and Final Set Needle

Code: [38-2110](#)



EN Vicat Mould

Code: [38-2300](#)



Engineer's Steel Rule

Code: [81-0805](#)



Harvard Trip Balance

Code: [78-7090](#)



Timer Clock

Code: [81-0518](#)



Vicat Mould

Code: [38-2200](#)



Weights for Harvard Trip Balance

Code: [78-7110](#)

Spares/Consumables



Consistency Plunger

Code: [38-2010/10](#)



EN Initial and Final Set Needle

Code: [38-2110](#)

Product Group: [Vicat Method](#)

1.13mm diameter and 1.13mm diameter with special footing.

Standards

ASTM C187, ASTM C191

Further Information

****NOT AVAILABLE FOR SALE IN THE USA****

Accessories

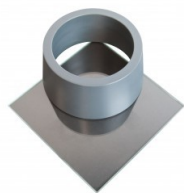
ASTM Initial Set Needle

Code: [38-2620](#)



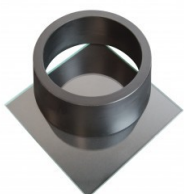
ASTM Vicat Mould

Code: [38-2660](#)



EN Vicat Mould

Code: [38-2300](#)



Engineer's Steel Rule

Code: [81-0805](#)



Harvard Trip Balance

Code: [78-7090](#)

Vicat Mould

Code: 38-2200



Weights for Harvard Trip Balance

Code: 78-7110

Spares/Consumables

Consistency Plunger

Code: 38-2010/10



Alternatives

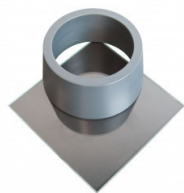
ASTM Initial Set Needle

Code: 38-2620



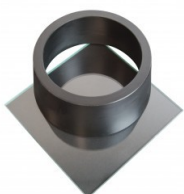
ASTM Vicat Mould

Code: [38-2660](#)



EN Vicat Mould

Code: [38-2300](#)



Engineer's Steel Rule

Code: [81-0805](#)



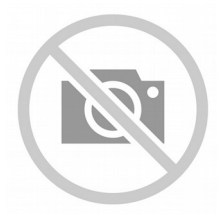
Harvard Trip Balance

Code: [78-7090](#)



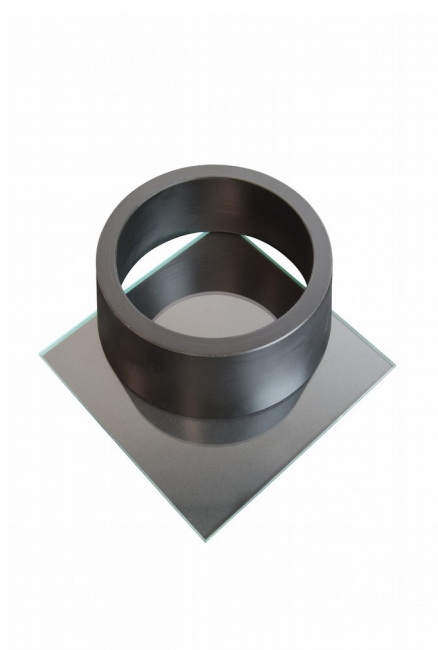
Vicat Mould

Code: [38-2200](#)



Weights for Harvard Trip Balance

Code: [78-7110](#)



EN Vicat Mould

Code: [38-2300](#)

Product Group: [Vicat Method, Automatic Vicat](#)

Accessory: manufactured from a hard rubber compound and supplied complete with a glass base plate.

Standards

EN 196-3

Further Information

****NOT AVAILABLE FOR SALE IN THE USA****

Accessories

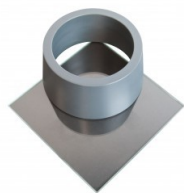
ASTM Initial Set Needle

Code: [38-2620](#)



ASTM Vicat Mould

Code: [38-2660](#)



EN Initial and Final Set Needle

Code: [38-2110](#)



Vicat Mould

Code: [38-2200](#)



Spares/Consumables

Consistency Plunger

Code: [38-2010/10](#)

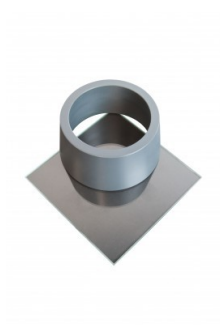


Alternatives



ASTM Initial Set Needle

Code: [38-2620](#)



ASTM Vicat Mould

Code: [38-2660](#)



EN Initial and Final Set Needle

Code: [38-2110](#)



Vicat Mould

Code: [38-2200](#)



Le Chatelier Mould

Code: [38-3005](#)

Product Group: [General Expansion of Dry Hydrated Lime by the Le Chatelier Method](#), [Soundness of Cement Paste by the Le Chatelier Method](#), [Soundness](#)

Comprising a split cylinder fitted with two indicator stems. The mould is supplied complete with two glass plates and a weight 100 g \pm 10 g. Three moulds required for each test.

Standards

BS 6463, EN 196-3, EN 459-2

Further Information

****NOT AVAILABLE FOR SALE IN THE USA****

Accessories



Extensibility of Mould Apparatus BS

Code: [38-3200](#)



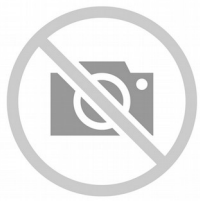
Extensibility of Mould Apparatus EN

Code: [38-3205](#)



Le Chatelier Water Bath

Code: [38-3420/01](#)



Tamping Rod

Code: [38-3300](#)



Trowel - Gauging

Code: [81-0335](#)



Extensibility of Mould Apparatus EN

Code: 38-3205

Product Group: General Expansion of Dry Hydrated Lime by the Le Chatelier Method

Conforms to EN196-3, 459-2. The unit comprises a metal sleeve with a hook and set screw to fit over one of the mould pointers, and a clamp to fit onto the other pointer of the mould. Supplied complete with one weight 300 g \pm 1 g.

Standards

EN 196-3

Further Information

NOT AVAILABLE FOR SALE IN THE USA

Accessories



Tamping Rod

Code: 38-3300

Alternatives



Tamping Rod

Code: 38-3300



Le Chatelier Water Bath

Code: [38-3420/01](#)

Product Group: [Soundness of Cement Paste by the Le Chatelier Method, Soundness](#)

Manufactured from corrosion resistant material, complete with a removable rack to hold up to twelve moulds and timer unit.

Further Information

****NOT AVAILABLE FOR SALE IN THE USA****

Accessories



Extensibility of Mould Apparatus BS

Code: [38-3200](#)



Tamping Rod

Code: [38-3300](#)



Trowel - Gauging

Code: [81-0335](#)

Alternatives



Extensibility of Mould Apparatus BS

Code: [38-3200](#)



Tamping Rod

Code: [38-3300](#)



Trowel - Gauging

Code: [81-0335](#)



Tamping Rod

Code: 38-3300

Product Group: General Expansion of Dry Hydrated
Lime by the Le Chatelier Method

17 mm end diameter.

Further Information

****NOT AVAILABLE FOR SALE IN THE USA****

Accessories



Extensibility of Mould Apparatus BS

Code: 38-3200



Extensibility of Mould Apparatus EN

Code: 38-3205



Le Chatelier Water Bath

Code: 38-3420/01

Alternatives



Extensibility of Mould Apparatus BS

Code: [38-3200](#)



Extensibility of Mould Apparatus EN

Code: [38-3205](#)



Le Chatelier Water Bath

Code: [38-3420/01](#)



Mortar Sand

Code: [39-1170](#)

Product Group: [Moulding of Prisms](#)

Graded pack for 3 prisms. 1350g pack.

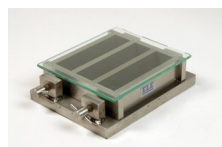
Standards

EN 196-1, EN 413-2, EN 459-2, EN 1744-1, EN 1015-10, EN 1015-11, EN 13454-2, ISO 679, BS 3892-1, BS 4551-1

Further Information

****NOT AVAILABLE FOR SALE IN THE USA****

Accessories



Three-gang Mould

Code: [39-1100](#)