



IF IT'S WORTH BUILDING, IT'S WORTH TESTING

This wishlist was generated on 06/07/2018, and contains the following Products:

38-2110

EN Initial and Final Set Needle

78-5655/01

Electronic Balance - 75 Kg x 5.0g

38-3005

Le Chatelier Mould

38-3205

Extensibility of Mould Apparatus EN

38-3300

Tamping Rod

38-3420/01

Le Chatelier Water Bath

38-0620

Pure Mineral Oil 1 Litre Bottle.

38-0645

Reference Cement

38-0650

Filter Papers

38-1000/15

Blaine Air Permeability Cell

81-0518

Timer Clock

82-5420

Digital Pocket Thermometer

80-0200/01

ELE Sieve Shaker

25-3518/01

Digital Tritest 50 Load Frame

27-1500/01

GDU 8 Channel Data Acquisition Unit 220-240 V 50/60 Hz, 1 Ph.

25-0580

Constant Head Permeability Cell 75mm Diameter Specimen.

42-4580

Tamping Rod 8mm Dia X 300mm.

81-0200

Aluminium Scoop Small

24-9150/01

Cbr-Test 50 Machine 50kN Capacity BS and ASTM Supplied with Stabilising Bar.

26-2114/01

Digital Direct/Residual Shear Apparatus Complete with Lever Loading Assembly. 220-240V 50/60Hz 1Ph.

36-3090/01

ADR Touch 2000 Standard Compression Machine with Digital Readout.

78-1250/01

225 Litre Drying Oven

45-3810/01

Rotatest 1500

46-5290

Standard Penetrometer

42-1000/01

Buoyancy Balance 6Kg X 0.1G. Supplied with Support Frame Water Tank & Suspension Hook.

42-0410

Flakiness Gauge.

42-0300

Grid Sieve 2.5mm Slot Width for EN Aggregate Flakiness Test.

34-6575/01

Large Curing Tank C/W with Circulating Pump Heater/Thermostat Unit and Lower Rack

432-020

Standard Colour Comparator Kit In Carrying Case. Supplied Without Colour Disks and Reagents.

432-032/10

Chlorine Reagent Pack for Comparator. Sufficient for 250 tests.

82-0220

Beaker - 1000 ml

82-1440

Burette

504-120

Stevenson Screen Interior Dimensions 435 X 250 X 445mm

460-050

Digital Hand Held Anemometer

506-250/10

Class A Evaporation Tank.

509-105

Automatic Weather Station

503-062/10

Anemometer Cups. Set of 3.

506-106

Wet & Dry Bulb Hygrometer



EN Initial and Final Set Needle

Code: [38-2110](#)

Product Group: [Vicat Method](#)

1.13mm diameter and 1.13mm diameter with special footing.

Standards

ASTM C187, ASTM C191

Further Information

****NOT AVAILABLE FOR SALE IN THE USA****

Accessories

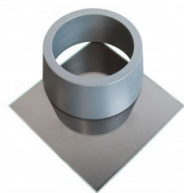
ASTM Initial Set Needle

Code: [38-2620](#)



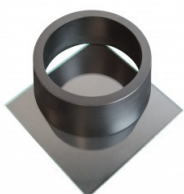
ASTM Vicat Mould

Code: [38-2660](#)



EN Vicat Mould

Code: [38-2300](#)



Engineer's Steel Rule

Code: [81-0805](#)



Harvard Trip Balance

Code: [78-7090](#)

Vicat Mould

Code: 38-2200



Weights for Harvard Trip Balance

Code: 78-7110

Spares/Consumables

Consistency Plunger

Code: 38-2010/10



Alternatives

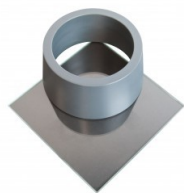
ASTM Initial Set Needle

Code: 38-2620



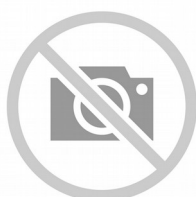
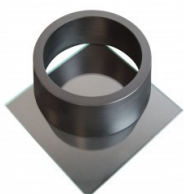
ASTM Vicat Mould

Code: [38-2660](#)



EN Vicat Mould

Code: [38-2300](#)



Engineer's Steel Rule

Code: [81-0805](#)



Harvard Trip Balance

Code: [78-7090](#)



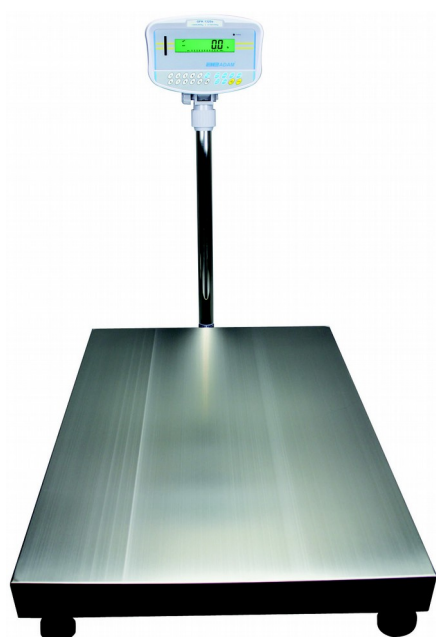
Vicat Mould

Code: [38-2200](#)



Weights for Harvard Trip Balance

Code: [78-7110](#)



Electronic Balance - 75 Kg x 5.0g

Code: 78-5655/01

Product Group: Electronic Balances

Further Information

Not available for sale in the USA

Specification

Capacity resolution	75 kg x 5g
Pan size	400 x 500 mm
Mains and battery	Yes
Dimensions (w x d x h)	400 x 590 x 972 mm
Weight	28 kg
Weighing units	g, kg, lb, lb:oz, oz, N



Le Chatelier Mould

Code: 38-3005

Product Group: General Expansion of Dry Hydrated Lime by the Le Chatelier Method, Soundness of Cement Paste by the Le Chatelier Method, Soundness

Comprising a split cylinder fitted with two indicator stems. The mould is supplied complete with two glass plates and a weight 100 g \pm 10 g. Three moulds required for each test.

Standards

BS 6463, EN 196-3, EN 459-2

Further Information

****NOT AVAILABLE FOR SALE IN THE USA****

Accessories



Extensibility of Mould Apparatus BS

Code: 38-3200



Extensibility of Mould Apparatus EN

Code: 38-3205



Le Chatelier Water Bath

Code: 38-3420/01



Tamping Rod

Code: [38-3300](#)



Trowel - Gauging

Code: [81-0335](#)



Extensibility of Mould Apparatus EN

Code: 38-3205

Product Group: General Expansion of Dry Hydrated Lime by the Le Chatelier Method

Conforms to EN196-3, 459-2. The unit comprises a metal sleeve with a hook and set screw to fit over one of the mould pointers, and a clamp to fit onto the other pointer of the mould. Supplied complete with one weight 300 g \pm 1 g.

Standards

EN 196-3

Further Information

NOT AVAILABLE FOR SALE IN THE USA

Accessories



Tamping Rod

Code: 38-3300

Alternatives



Tamping Rod

Code: 38-3300



Tamping Rod

Code: 38-3300

Product Group: General Expansion of Dry Hydrated
Lime by the Le Chatelier Method

17 mm end diameter.

Further Information

****NOT AVAILABLE FOR SALE IN THE USA****

Accessories



Extensibility of Mould Apparatus BS

Code: 38-3200



Extensibility of Mould Apparatus EN

Code: 38-3205



Le Chatelier Water Bath

Code: 38-3420/01

Alternatives



Extensibility of Mould Apparatus BS

Code: 38-3200



Extensibility of Mould Apparatus EN

Code: 38-3205



Le Chatelier Water Bath

Code: 38-3420/01



Le Chatelier Water Bath

Code: [38-3420/01](#)

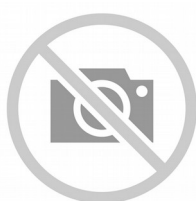
Product Group: [Soundness of Cement Paste by the Le Chatelier Method, Soundness](#)

Manufactured from corrosion resistant material, complete with a removable rack to hold up to twelve moulds and timer unit.

Further Information

****NOT AVAILABLE FOR SALE IN THE USA****

Accessories



Extensibility of Mould Apparatus BS

Code: [38-3200](#)



Tamping Rod

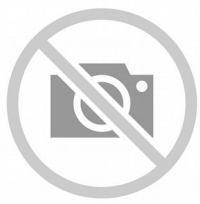
Code: [38-3300](#)



Trowel - Gauging

Code: [81-0335](#)

Alternatives



Extensibility of Mould Apparatus BS

Code: [38-3200](#)



Tamping Rod

Code: [38-3300](#)



Trowel - Gauging

Code: [81-0335](#)



Pure Mineral Oil 1 Litre Bottle.

Code: [38-0620](#)

Product Group: [Blaine Fineness Apparatus](#),
[Determination of Fineness Blaine Apparatus](#)

Standards

EN 196-21, ASTM C204



Reference Cement

Code: [38-0645](#)

Product Group: [Determination of Fineness Blaine Apparatus](#)

Accessory: 5g sachet.

Standards

ASTM C204, AASHTO T153

Further Information

Available from U.K factory



Filter Papers

Code: [38-0650](#)

Product Group: [Determination of Fineness Blaine Apparatus](#)

Accessory: 12.7mm diameter. Box of 100.

Standards

ASTM C204

Further Information

****NOT AVAILABLE FOR SALE IN THE USA****



Blaine Air Permeability Cell

Code: [38-1000/15](#)

Product Group: [Blaine Fineness Apparatus](#),
[Determination of Fineness Blaine Apparatus](#)

Spare: Stainless steel with a perforated disc and plunger.

Standards

ASTM C204



Timer Clock

Code: [81-0518](#)

Product Group: [Rice Test Vibrator](#), [Watches and Clocks](#)

Accessory

Standards

EN 12697-5

Further Information

****NOT AVAILABLE FOR SALE IN THE USA****



Digital Pocket Thermometer

Code: [82-5420](#)

Product Group: [Digital Pocket Thermometer](#)

The stainless steel probe carries a highly accurate platinum sensor and when not in use folds back into the side of the instrument. With a clear 8 mm high LCD display this instrument is powered by a standard 12 V MN21 battery or equivalent.

Further Information

****NOT AVAILABLE FOR SALE IN THE USA****

Specification

Dimensions (l x w x h)	150 x 45 x 19 mm
Range	-49.9 to 199.9°C
Resolution	0.1°C
Accuracy	±0.4°C
Weight	105 g



ELE Sieve Shaker

Code: 80-0200/01

Product Group: ELE Sieve Shaker

The ELE sieve shaker is powered by an electromagnetic drive that has no rotating parts to wear making it maintenance free and extremely quiet in operation.

The unit features a triple Vertical-Lateral-Rotary vibrating action that moves the sample over the sieve producing faster more efficient sieving, while the rapid vertical movements also help keep the apertures from blinding.

The shaker is ideal for laboratory or on site use. It is robust, compact and sufficiently lightweight to be portable. The separate digital microprocessor controlled console unit incorporates a keypad for setting the sieving program and is isolated from any effects of vibration from the shaker.

As standard the shaker includes, timer 0-999 minutes, adjustable vibration intensity and adjustable intermittent or continuous operation.

Further Information

****NOT AVAILABLE FOR SALE IN THE USA****

The unit accepts up to ten 200 mm or 8 inch, full height, diameter sieves and lid and receiver, or up to six 300 mm or 12 inch diameter sieves and lid and receiver. Complete as specified. Dimensions (l x w x h) 380 x 440 x 1085 mm. For 220 - 240 V AC, 50 Hz 1ph.



Digital Tritest 50 Load Frame

Code: [25-3518/01](#)

Product Group: [Digital Tritest 50 Load Frame](#), [CBR Load Frames](#), [Triaxial Load Frames](#)

- Microprocessor control
- Large on-board LED screen display
- Direct entry via a touch sensitive keyboard
- Rapid approach and return to datum of platen
- Fully variable speed, 0.00001 to 9.99999 mm/min
- Samples up to 100 mm diameter

This 50 kN capacity machine, designed primarily for triaxial testing of soil specimens up to 100 mm diameter x 200 mm long, comprises a rigid twin column construction with an integral fully variable microprocessor controlled drive unit and LCD display with a touch sensitive keyboard. The machine is normally bench mounted for ease of installation and operation.

The use of a microprocessor controlled drive system and keyboard entry provides the Digital Tritest 50 with a wide variety of features which include pause and speed reset during test, RS 232C, operator programming of speed and control functions, self test diagnostics and many other features.

A robustly constructed steel case houses the motor drive system with careful attention being given to the prevention of ingress of water or grit. All operating controls are mounted on the front panel of the machine, which is angled and recessed to prevent physical and environmental damage.

Standards

BS 1377-7, BS 1377-8, BS 1924-2, ASTM D1883, ASTM D2166, ASTM D2850, ASTM D4767, ASTM D7181, AASHTO T99, AASHTO T134, AASHTO T135, AASHTO T136, AASHTO T180, AASHTO T193, AASHTO T208, AASHTO T296, AASHTO T297

Further Information

Complete with RS 232C interface.

Specification

Capacity	50kN (11,200 lbf).
Speed Range	English mode: 0.000001 to 0.399999 in/min. Metric mode: 0.00001 to 9.99999 mm/min.
Rapid Approach Speed	1.0 in/min. (25 mm/min.).

Product Sheet

www.ele.com
+44 (0) 01525 249 200



Platen Travel	100mm (3.9"); limit switch protection.
Platen Diameter	133 mm (5.2")
Vertical Clearance	910 mm, (36 .8") maximum; 305mm, (12") minimum.
Horizontal Clearance	364mm, (15 .3").
Serial Interface	RS232C; programmable baud rate and protocol.
Overall Dimensions	500 x 500 x 1,470 mm, (19.7" w. x 19.7" d. x 57.8" h).
Weight	Net 100kg (220 lbs); Shpg. 136kg (300 lbs).

Accessories



50kN Clamped Boss Load Ring

Code: [78-0860](#)



Adaptor kit, to perform CBR on the Tritest 50 load frame

Code: [25-3518/10](#)



Clamped Boss Load Ring - 10.0 kN

Code: [78-0460](#)



Clamped Boss Load Ring - 28.0 kN

Code: [78-0760](#)



Clamped Boss Load Ring - 3.0 kN

Code: [78-0160](#)



Clamped Boss Load Ring - 4.5 kN

Code: [78-0260](#)

Alternatives



MultiPlex 50 Load Frame

Code: [25-3700/01](#)



Versa-Loader

Code: [25-3525/02](#)



GDU 8 Channel Data Acquisition Unit 220-240 V 50/60 Hz, 1 Ph.

Code: 27-1500/01

Product Group: Data Logging with the GDU, Geotechnical Data Acquisition Unit (GDU), Automatic Data Acquisition - CBR, Automatic Data Acquisition - Triaxial, Automatic Data Acquisition - Consolidation, Automatic Data Acquisition - Direct Shear

The GDU is a stand-alone, multi-tasking, multi-channel data logger, that is reliable and powerful, enabling it to co-ordinate test data from the range of ELE transducers required for various test methods.

The ELE Geotechnical Software package (DS7.1 and following), in conjunction with the GDU and a range of transducers, are the two central components required to create a modern turnkey soil testing system. Being fully modular it can be adapted to a wide range of soil testing laboratory configurations.

- For performing CBR, Consolidation, Direct/Residual Shear and Total & Effective Stress Triaxial tests
- 8 Channels expandable to 32 for performing multiple, concurrent tests for cost savings
- Independent signal conditioning on each channel to maintain data accuracy
- Field-upgradeable software, meaning no downtime for future software and functionality upgrades
- PC link via RS232 (DS7.1 only), or RS232 and Ethernet P2P/LAN (with DS7.2 and following)

- Extended warranty

Specification

Case	Aluminum, free standing; houses power supply, analog to digital conversion module and an 8-channel analog input module with transducer energization.
Sockets	Standard 5-pin DIN type.
Input Range	± 5 volts to ± 10 mV full scale.
Transducer Supply	10vDC.
Dimensions	12.8" w. x 14.3" d. x 6.1" h. (325 x 363 x 155 mm).
Weight	Net 14.08 lbs. (6.4 kg).

Accessories



8-Channel Expansion Analog Input Module

Code: [27-1505](#)



USB to Serial Adapter

Code: [27-1701](#)

Alternatives



GDU 8 Channel Data Acquisition Unit 100-120 V 60 Hz

Code: [27-1500/02](#)



RS232/USB Cable, GDU

Code: [27-1510](#)



Constant Head Permeability Cell 75mm Diameter Specimen.

Code: [25-0580](#)

Product Group: [Constant Head Apparatus](#)

75 mm Diameter

Standards

BS 1377-5

Specification

Nominal Cell inside diameter	75 mm
Cell wall	Transparent plastic
Take-off points	3
End plates	Anodised aluminium
Weight kg	2.6



Tamping Rod 8mm Dia X 300mm.

Code: 42-4580

Product Group: Aggregate Crushing Value (ACV) and
Ten Percent Fines Value (TFV)

Spare: 8mm diameter x 300mm long with rounded
end.

Further Information

****NOT AVAILABLE FOR SALE IN THE USA****



Aluminium Scoop Small

Code: [81-0200](#)

Product Group: [Scoops and Shovels](#)

82 x 127 x 50 mm, cast aluminium with handle

Further Information

****NOT AVAILABLE FOR SALE IN THE USA****



Cbr-Test 50 Machine 50kN Capacity BS and ASTM Supplied with Stabilising Bar.

Code: [24-9150/01](#)

Product Group: [CBR Load Frames](#)

- Single speed machine (BS/EN and ASTM)
- Rapid platen adjustment
- Complete with stabilising bar
- Compact, bench-mounting design
- Options for mechanical or electronic measurement

Designed for performing laboratory CBR tests to BS 1377, EN13286-47 and ASTM D1883, this bench mounting machine comprises a twin column frame incorporating a motorised drive system. Rapid adjustment of the platen is provided, which enables daylight to be taken up quickly and also close control of application of a seating load.

Standards

BS 1377, BS 1924, EN 13286-47, ASTM D1883, AASHTO T193

Specification

Dimensions (l x w x h)	550 x 400 x 1220 mm
Max vertical clearance	800 mm
Horizontal clearance	255 mm
Platen diameter	133 mm
Platen travel	105 mm
Weight kg	80

Accessories



50kN Clamped Boss Load Ring

Code: [78-0860](#)



50kN S-type Load Cell

Code: [27-1559](#)



ASTM Cbr Mould Complete with Collar & Perforated Base

Code: [24-9228](#)



BS Cbr Mould Body.

Code: [24-9198](#)



BS Extension Collar

Code: [24-9200](#)



BS Solid Base or Top Plate

Code: [24-9204](#)



Cbr Penetration Piston (Adjustable).

Code: [24-9183](#)



CBR Penetration Transducer 50mm Travel Fitted with 5 Pin Din Plug.

Code: [27-1705](#)



Clamped Boss Load Ring - 10.0 kN

Code: [78-0460](#)



Clamped Boss Load Ring - 2.0 kN

Code: [78-0060](#)



Clamped Boss Load Ring - 28.0 kN

Code: [78-0760](#)



Penetration Dial Gauge BS

Code: [24-9186](#)



Penetration Piston

Code: [24-9182](#)



Penetration/Swell Dial Gauge ASTM.

Code: [24-9184](#)

Alternatives



CBR-Test 50 Machine 50 kN Capacity BS and ASTM Supplied with Stabilising Bar.

Code: [24-9150/02](#)



Cbr-Test 50 Machine 50kN Capacity BS and ASTM Supplied with Stabilising Bar.

Code: [24-9150/01](#)



Cbr-Test 50 Machine 50kN Capacity BS and ASTM Supplied with Stabilising Bar.

Code: [24-9150/06](#)



MultiPlex 50 Load Frame

Code: [25-3700/01](#)



Digital Direct/Residual Shear Apparatus Complete with Lever Loading Assembly. 220-240V 50/60Hz 1Ph.

Code: 26-2114/01

Product Group: Direct/Residual Shear Apparatus,
Direct/Residual Shear Apparatus

- Microprocessor control
- Large on-board LCD screen display
- Direct entry via touch sensitive keyboard
- Rapid approach and return to start datum
- Fully variable speed, 0.00001 to 9.99999 mm/minute
- Accepts specimens up to 100 mm square

The ELE Direct Shear Apparatus accepts specimens 60 mm, 100 mm square or 2.5 inches in diameter. The use of a microprocessor controlled drive system and keyboard entry gives the apparatus a wide range of features that include pause and speed reset during test, RS 232C interface, operator programming of speed and control functions, self test diagnostics and many other features. A return to start datum provides a positive means of reversing the shearbox when either preparing for a new test or continuing with residual testing procedures.

Safety forward/reverse travel limit switches are fitted as standard and monitored through the electronics system control.

The electronics are housed in a modern moulded shroud, which includes a large LCD display and keyboard entry. The apparatus is enclosed in a robustly constructed case, has been designed for floor mounting and is supplied complete with carriage, loading hanger and 10:1 lever loading device.

Standards

ASTM D3080, AASHTO T236, BS 1377, EN 1997-2

Further Information

for 220 - 240 V AC, 50 - 60 Hz, 1 ph.

Specification

Sample Size

Accepts either 2.42", 2.5" diam.; 60 mm square samples using accessory shear box assemblies, not included.

Speed Range

Variable in either English or Metric units

Shear Force
Vertical Load

Dimensions

Weight

between 0.000001"
(0.00001 mm) to 0.399999"
(9.99999
mm) per minute.
1,100 lbf. (5.0 kN) maximum.
2,200 lbf. (10.0 kN) using 10:1
lever ratio.
44.7" l. x 12 .6" w. x 49.6" h.
(1,135 x 320 x 1,260 mm).
130 kg

Accessories



Clamped Boss Load Ring - 2.0 kN

Code: 78-0060



Clamped Boss Load Ring - 3.0 kN

Code: 78-0160



Clamped Boss Load Ring - 4.5 kN

Code: 78-0260



Dial Gauge 10mm Travel X 0.002mm Divisions.

Code: 25-0440



Digital Proving Ring, 1,000 lbs (4.5 kN)

Code: [78-0264](#)



Digital Proving Ring, 450 lbs (2.0 kN)

Code: [78-0064](#)



Horizontal Displacement Transducer Assembly 15mm Travel 5 Pin Din Plug Mounting Pillar

Code: [27-1697](#)



Mechanical Dial Indicator - 25 mm Range Clockwise Movement

Code: [88-4110](#)



S-Type Load Cell 5 kN.for Triaxial Tests. Fitted with 5 Pin Din Plug.

Code: [27-1551](#)



Set of Weights 50 kg Slotted.

Code: [26-2132](#)



Vertical Displacement Transducer Assembly 15mm Travel with 5 Pin Din Plug Bracket for Shear Box

Code: [27-1689](#)



Weight Set A

Code: [25-0535](#)



Weight Set B

Code: [25-0537](#)

Spares/Consumables



Dial Indicator - 1.0" Range

Code: [88-4100](#)



Electronic Digital Indicator, 0.600"/15 mm range

Code: 88-4210



Vertical Dial Indicator, English

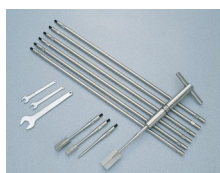
Code: 25-0445

Alternatives



Digital Direct/Residual Shear Apparatus Complete with Lever Loading Assembly. 110-120V 50/60Hz 1Ph.

Code: 26-2114/02



H60 Field Inspection Vane Tester 0-200Kpa In Carrying Case. includes calibration and certificates.

Code: 26-3335



Hand Vane Tester

Code: 26-3346



Laboratory Vane Apparatus with 4 Springs and 12.7mm Vane; Hand Operated.

Code: [26-2270](#)



Pocket Shearmeter with 3 Vanes 0 to 1Kgf/Cm2 X 0.5Kgf/Cm2.

Code: [26-2261](#)



Shear Box Assembly 100mm Sq.

Code: [26-2197](#)



Shear Box Assembly 2.5 Inch Diameter

Code: [26-2213](#)



Shear Box Assembly 60mm Sq.

Code: [26-2181](#)



ADR Touch 2000 Standard Compression Machine with Digital Readout.

Code: 36-3090/01

Product Group: General Purpose Compression Machines

- 2000 kN/450 000 lbf capacity
- Tests 150 and 100 mm concrete cubes or cylinders up to 320 x 160 mm diameter

Standard compression machine 2000 kn capacity meeting the requirements of as 1012:part 9

Incorporates an ADR touch digital readout with rugged electrically driven hydraulic power pack with manual pace control as standard. the unit shall be fitted with output ports for printer & PC.

High stability welded construction steel frame.

Fitted with front and rear gates for operator protection.

Frame shall be fitted with spherically seated upper platen.

Maximum vertical clearance between upper & lower platen 340mm and horizontal distance is 325 mm

Supplied with 222 mm dia removable lower platen marked for centering of cube and cylinder specimens.

Maximum ram travel shall be 50mm restricted by cut out switch that shuts down the console at maximum travel.

Shall include 'on board' memory for over 100000 test results.

Operating firmware shall incorporate pre-programmed standard sample sizes and pace rates with manual override.

Control firmware shall include special test routines for acv and tfv.

The machine shall be suitable for connecting to and controlling optional flexural or additional compression testing frame.

Supplied with remote logger software.

Incorporating the ADR Touch digital readout, the machines are designed to test cubes and cylinders in accordance with most International Standards. Supplied fitted for cylinder testing with safety gates.

When used for cube testing appropriate distance pieces according to the size of specimen to be tested are required and must be ordered separately.

Further Information

****NOT AVAILABLE FOR SALE IN THE USA****

The Standard range of compression machines has been designed to meet the need for a simple, economic and reliable means of testing concrete.

Whilst delivering all the features and reputation of the established ADR Series with its extensive design history, the new and improved user interface provides a high quality platform for testing that enhances the performance of ELE's compression machines.

New, sophisticated electronics further the benefits of simplified operation, whilst delivering the highest levels of accuracy in testing concrete and cement/mortar samples, satisfying the needs of Quality Control Managers, Lab Managers and Technicians.

ACCURACY & SAVINGS

The new ADR Touch Series, with 145mm (5.7") high resolution QVGA touch screen interface and intuitive menu-driven operation, reduces the time taken to set up the machine and perform tests, reducing the time to train staff by up to 25%.

- Up to 6 sample types can be set as favorites, enabling one-touch set up for repeat testing.
- Full, QWERTY touch pad for input of test data.

Most testing errors produce lower strength results. Noncompliant loading rates can generate errors in measured strength. The user interface includes real-time display of load vs. time, further ensuring accurate and consistent test results and providing "goodness of test" data to improve traceability in your QC operations.

TRACEABILITY & DATA QUALITY

The ADR range now provides improved data quality and traceability in due diligence cases - it is now possible to demonstrate traceability all the way from the machine/user to the accreditation body, increasing your reputation and peace of mind - all test results now come complete with the machine serial number attached.

- Enhanced USB data communications between PC and machine - eliminating the need for download software.
- Two gigabytes of storage memory.
- Full customization of sample sizes - stress calculations are automatically recalculated.

USER SAFETY

With full safety gates as standard, total systems diagnostics, ram run-out switches and overload warnings ensure the safety of your employees and the reliability of your machine.

Specification

Testing Standards	BS EN ISO 7500-1, ASTM E4
Capacity	2000 kN
Cubes (Concrete)	Up to 150 mm
Cylinders (Concrete)	Up to 160 x 320 mm
Blocks	n/a

Product Sheet

www.ele.com
+44 (0) 01525 249 200



Flexural Testing	Via Flexural Frame
TFV and ACV	Yes
Voltage Supply	220-240V 50/60 Hz 1Ph.
Frame Type	Welded
Max vert. Clearance	340 mm
Max hor. Clearance	325 mm
Platen Sizes	Lower, Upper 222 mm
Max Ram Travel	50 mm

Accessories



100kN Flexural Fitting Kit (ADR) Used for Connecting Flexural Frames to ADR Compression Machines.

Code: [37-6138](#)



2000 kN Load Calibration Device complete with Handheld Readout Unit & Calibration Certificate ISO376

Code: [37-8315](#)



ADR Touch Head for Compression Machines

Code: [37-5951/09](#)



Flexible Hose

Code: [5038B0027](#)



Impact Printer Rs232 Serial Connection. Supplied Complete with 1 Paper Roll.

Code: [37-4859/01](#)



Standard Distance Piece - 100 mm Depth

Code: [37-5100](#)



Standard Distance Piece - 20 mm Depth

Code: [37-4980](#)



Standard Distance Piece - 50 mm Depth

Code: [37-5000](#)



Standard Distance Piece - 60 mm Depth

Code: [37-5020](#)



Standard Distance Piece - 80 mm Depth

Code: [37-5050](#)

Spares/Consumables



Pressure transducer, 0-700bar, 0.05 to 10v DC Output

Code: [6014A0062](#)

Alternatives



ADR Touch 1500 Compression Machine with Digital Readout.

Code: [36-0720/01](#)



225 Litre Drying Oven

Code: [78-1250/01](#)

Product Group: [Percentage Refusal Density \(PRD\)](#),
[Oven Drying Method](#), [Oven Drying Method](#), [Oven Drying Method](#)

Standards

EN 12697-32, EN 13280-4, BS 598-104, BS 1377

Specification

Capacity	225 litres
External Dimensions (l x w x h)	540 x 1040 x 940
Internal Dimensions (l x w x h)	440 x 920 x 600
Fluctuation	± 0.75°C
Rated power heater elements	2000 W
Shelves supplied	3
Shelf positions	4
Weight	80 kg

Alternatives



100 Litre Drying Oven

Code: [78-1225/01](#)



150 Litre Drying Oven

Code: [78-1235/01](#)



50 Litre Drying Oven

Code: [78-1215/01](#)

Product Sheet

www.ele.com
+44 (0) 01525 249 200



Drying Oven 425 Litre Capacity

Code: [78-0135/01](#)



Rotatest 1500

Code: 45-3810/01

Product Group: Asphalt Centrifuge Extractors

Centrifuge extractor used to determine the quantitative amount of bitumen in bituminous paving mixtures. Variable speed control from 0 to 3600 rpm through the front panel mounted control knob and brake control included for rapid deceleration.

Precision machined aluminium removable cover with integral cup for adding solvent, with sealed cast aluminium housing. Centrifuge extractor used to determine the quantitative amount of bitumen in bituminous paving mixtures. Variable speed control from 0 to 3600 rpm through the front panel mounted control knob and brake control included for rapid deceleration.

Precision machined aluminium removable cover with integral cup for adding solvent, with sealed cast aluminium housing.

Standards

EN 12697-1, ASTM D2172, AASHTO T164

Further Information

****NOT AVAILABLE FOR SALE IN THE USA****

1500 g capacity. Supplied with 100 Filter Discs. For 220 V AC, 50 - 60 Hz, 1ph.

Accessories



Bowl - 2.5 litre

Code: 81-5020



Desiccator - Non-vacuum

Code: [82-2100](#)



Evaporating Dish - 100 x 40 mm

Code: [82-1970](#)



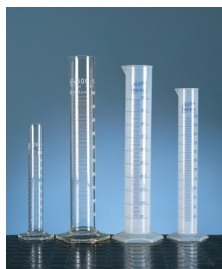
Filter Discs Pack of 100

Code: [45-3803](#)



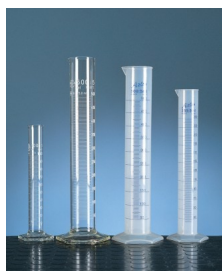
Hotplate

Code: [78-2950/01](#)



Measuring Cylinder - Glass 100 ml

Code: [82-0380](#)



Measuring Cylinder - Glass 1000 ml

Code: [82-0500](#)



Sample Tray - 306 x 306 x 38 mm

Code: [81-4020](#)



Silica Gel

Code: [82-7091](#)



Volumetric Flask - 100 ml

Code: [82-1000](#)



Volumetric Flask - 1000 ml

Code: [82-1060](#)

Spares/Consumables



Replacement bowl for Rotatest 1500 centrifuge extractor

Code: [45-3810/10](#)

Alternatives



Muffle Furnace

Code: [83-4170/01](#)



Rotatest 3000

Code: [45-3815/01](#)



Standard Penetrometer

Code: [46-5290](#)

Product Group: [Asphalt Penetrometer](#), [Bitumen Penetration Test](#), [Penetration Test](#)

Penetration readings are quickly taken using this simple to operate apparatus. The 150 mm diameter dial is graduated in 400 divisions of 0.1 mm. Supplied without needles and penetration tins.

Standards

BS 2000-49, EN 1426, EN 13179-2, IP 49, ASTM D5, AASHTO T49

Further Information

Model shown with sample container; not included, order separately.

Specification

Dial Indicator	6" (150 mm) diam.; 400 mm x 0.1 mm.
Plunger Weight	47.5 g.
Needle	ASTM Style (non-certified); one included.
Plunger Release Weight	Manual mechanism. Net 18 lbs. (8.2 kg).

Accessories



ASTM (NIST Certified) Penetration Needle

Code: [46-5297](#)



Constant Temperature Bath 21 - 56°C

Code: [46-5500/01](#)



Penetration Needle

Code: [46-5360/10](#)



Penetration Tin

Code: [46-5860](#)



Penetration Tin

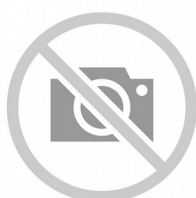
Code: [46-5861](#)



Transfer Dish

Code: [46-5800](#)

Spares/Consumables



ASTM (Non-Certified) Penetration Needle

Code: [46-5290/10](#)



Buoyancy Balance 6Kg X 0.1G. Supplied with Support Frame Water Tank & Suspension Hook.

Code: [42-1000/01](#)

Product Group: [Particle Density \(specific gravity\) and Water Absorption for Coarse Aggregates](#)

The buoyancy balance system developed by ELE consists of a rigid support frame, incorporating a water tank mounted on a platform. A mechanical lifting device is used to raise the water tank through the frame height immersing the specimen suspended below the balance. The balance supplied may also be used as a standard weighing device, thus providing a versatile and comprehensive weighing system in the laboratory. 6000 g x 0.1 g supplied with frame, water tank and suspension hook.

Standards

EN 1097-6, EN 12697-6, BS 812, ASTM C127, AASHTO T85

Further Information

****NOT AVAILABLE FOR SALE IN THE USA****

For 220 - 240 V AC, 50 - 60 Hz, 1 ph.

Accessories



200 mm Diameter Lid

Code: [79-0010](#)



200 mm Diameter Receiver

Code: [79-0020](#)



200mm Dia BS Sieve 31.5mm Perforated Plate.

Code: [79-1630](#)



200mm Dia BS Sieve 4.00mm Stainless Steel Mesh.

Code: [79-0310](#)



200mm Dia BS Sieve 63 Mic Stainless Steel Mesh.

Code: [79-0070](#)



200mm Dia BS Sieve 63.0mm Perforated Plate.

Code: [79-1670](#)



Digital Pocket Thermometer

Code: [82-5420](#)



Sample Container - Tinned Steel 10 litres

Code: [81-3060](#)



Sample Tray - 406 x 406 x 50 mm

Code: [81-4030](#)



Wire Basket Brass with Handle Nominal 6000Cm³ Capacity with 1.7mm Wire Mesh.

Code: [42-1005](#)



Flakiness Gauge.

Code: [42-0410](#)

Product Group: [Flakiness Sieves and Gauges](#)

Constructed of heavy gauge sheet steel to the dimensions specified in BS 812.

Standards

BS 812

Further Information

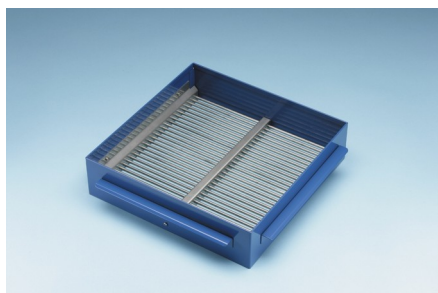
****NOT AVAILABLE FOR SALE IN THE USA****

Alternatives



Length Gauge

Code: [42-0820](#)



Grid Sieve 2.5mm Slot Width for EN Aggregate Flakiness Test.

Code: 42-0300

Product Group: Grid Sieves

2.5mm

Standards

EN 933-3

Further Information

****NOT AVAILABLE FOR SALE IN THE USA****

Passing Size - 5 mm Retained Size - 4 mm

Accessories



300mm Dia BS Sieve 10.0mm Perforated Plate.

Code: 79-2555



300mm Dia BS Sieve 11.2mm Perforated Plate.

Code: 79-2560



300mm Dia BS Sieve 12.5mm Perforated Plate

Code: [79-2565](#)



300mm Dia BS Sieve 16.0mm Perforated Plate.

Code: [79-2580](#)



300mm Dia BS Sieve 20.0mm Perforated Plate.

Code: [79-2595](#)



300mm Dia BS Sieve 25.0mm Perforated Plate.

Code: [79-2605](#)



300mm Dia BS Sieve 31.5mm Perforated Plate.

Code: [79-2630](#)



300mm Dia BS Sieve 4.00mm Perforated Plate.

Code: [79-2500](#)



300mm Dia BS Sieve 40.0mm Perforated Plate

Code: [79-2645](#)



300mm Dia BS Sieve 45.0mm Perforated Plate

Code: [79-2650](#)



300mm Dia BS Sieve 5.00mm Perforated Plate.

Code: [79-2515](#)



300mm Dia BS Sieve 5.60mm Perforated Plate.

Code: [79-2520](#)



300mm Dia BS Sieve 50.0mm Perforated Plate.

Code: [79-2655](#)



300mm Dia BS Sieve 6.30mm Perforated Plate.

Code: [79-2525](#)



300mm Dia BS Sieve 63.0mm Perforated Plate.

Code: [79-2670](#)



300mm Dia BS Sieve 8.00mm Perforated Plate.

Code: [79-2540](#)



300mm Dia BS Sieve 80mm Perforated Plate

Code: [79-2684](#)



300mm Dia BS Sieve 90.0mm Perforated Plate.

Code: [79-2690](#)



300mm Dia Lid.

Code: 79-2010



300mm Dia Receiver.

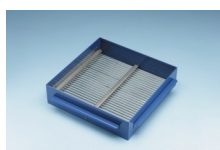
Code: 79-2020



Sample Tray - 406 x 406 x 50 mm

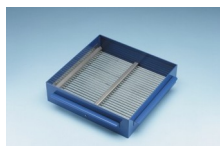
Code: 81-4030

Alternatives



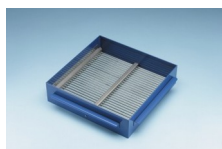
Grid Sieve 10mm Slot Width for EN Aggregate Flakiness Test.

Code: 42-0314



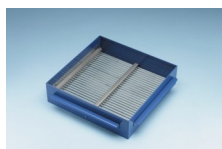
Grid Sieve 12.5mm Slot Width for EN Aggregate Flakiness Test.

Code: 42-0316



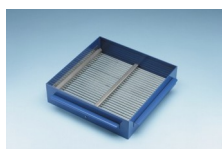
Grid Sieve 16mm Slot Width for EN Aggregate Flakiness Test.

Code: [42-0318](#)



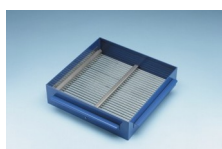
Grid Sieve 20mm Slot Width for EN Aggregate Flakiness Test.

Code: [42-0320](#)



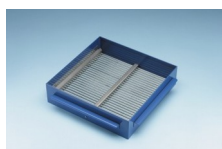
Grid Sieve 25mm Slot Width for EN Aggregate Flakiness Test.

Code: [42-0322](#)



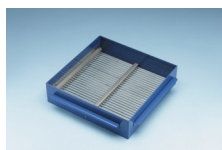
Grid Sieve 3.15mm Slot Width for EN Aggregate Flakiness Test.

Code: [42-0302](#)



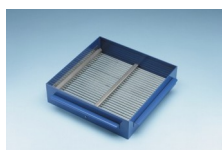
Grid Sieve 31.5mm Slot Width for EN Aggregate Flakiness Test.

Code: [42-0324](#)



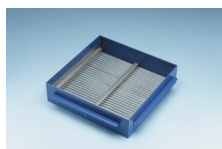
Grid Sieve 40mm Slot Width for EN Aggregate Flakiness Test.

Code: [42-0326](#)



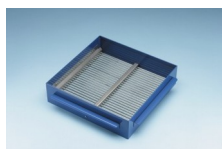
Grid Sieve 4mm Slot Width for EN Aggregate Flakiness Test.

Code: [42-0304](#)



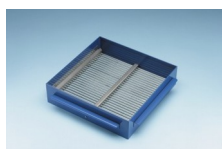
Grid Sieve 5mm Slot Width for EN Aggregate Flakiness Test.

Code: [42-0306](#)



Grid Sieve 6.3mm Slot Width for EN Aggregate Flakiness Test.

Code: [42-0308](#)



Grid Sieve 8mm Slot Width for EN Aggregate Flakiness Test.

Code: [42-0310](#)



Large Curing Tank C/W with Circulating Pump Heater/Thermostat Unit and Lower Rack

Code: [34-6575/01](#)

Product Group: [Expansion \(swell\) Test Equipment, Large Curing Tank](#)

This Large Curing Tank is supplied complete with a submersible pump, immersion heater/thermostat unit and separate control panel. The tank includes a lower rack as standard and is designed to maintain the temperature at $20 \pm 2^\circ\text{C}$, providing that the ambient temperature does not fall below 15°C or rise above 20°C .

Standards

EN 12390-2, ASTM C31, AASHTO T23

Further Information

****NOT AVAILABLE FOR SALE IN THE USA****

Supplied as specified. For 220 - 240 V AC, 50 - 60 Hz, 1 ph.

Specification

Internal Dimensions	1040 x 1040 x 605 mm (l x w x h)
Capacity	650 litres
Rated Power	2000 watt
Weight	60 kg

Accessories



Maximum and Minimum Thermometer

Code: [82-5310](#)

Alternatives



Jolting Table 220 - 240 V AC 60 Hz

Code: 39-1150/06



Standard Colour Comparator Kit In Carrying Case. Supplied Without Colour Disks and Reagents.

Code: [432-020](#)

Product Group: [Paqualab Test Meters](#)



Chlorine Reagent Pack for Comparator. Sufficient for 250 tests.

Code: [432-032/10](#)

Product Group: [Comparator reagents](#)

Specification

Measurement Range



Beaker - 1000 ml

Code: [82-0220](#)

Product Group: [Beakers and Covers](#)

Borosilicate glass, squat form.

Further Information

****NOT AVAILABLE FOR SALE IN THE USA****



Burette

Code: [82-1440](#)

Product Group: [Pipettes and Burettes](#)

Soda glass with singlebore stopcock, BS EN ISO 385
Class B, 0.10 sub-divisions. 50 ml.

Further Information

****NOT AVAILABLE FOR SALE IN THE USA****



Stevenson Screen Interior Dimensions 435 X 250 X 445mm

Code: [504-120](#)

Product Group: [Manual weather stations](#)

The Stevenson screen is designed to hold maximum and minimum thermometers, and a wet-and-dry bulb hygrometer. It is available either in the finished form, ready for use, or more cheaply as a make-it-yourself kit. Both are suitable for use in all climates.

The screen is made from top quality seasoned wood, with double-louvred sides, a double layer roof, and a floor of overlapping boards separated vertically by an airspace. The front panel is hinged at the bottom to form a door, and is retained in the horizontal position by two chains; it may be padlocked shut.

Further Information

Supplied without instruments or stand, painted white to reflect radiation. 540 x 580 x 480 mm.

Accessories



Iron Stand for stevenson screen (504-120)

Code: [504-124](#)



Digital Hand Held Anemometer

Code: 460-050

Product Group: Wind measurement

- Displays maximum gust.
- 4 selectable measuring units.
- Clear LCD display.

The battery operated digital handheld anemometer is particularly suited to site investigations, environmental surveys and meteorological observations. It is lightweight, manufactured from non-corrosive materials and has replaceable cups. At least 2000 readings can be obtained from a single battery, and an error message is shown when the power is low. When the instrument is switched on the wind speed is averaged over a 15 to 18 second period after which the result is shown on the display.

Further Information

Complete with 2 support legs, storage bracket and spare cup.



Class A Evaporation Tank.

Code: [506-250/10](#)

Product Group: [Evaporation measurement](#)

1220 mm diameter x 254 mm high.



Automatic Weather Station

Code: [509-105](#)

Product Group: [Environmental weather station](#)

Accessories



Wind Monitoring System

Code: [509-110](#)



Anemometer Cups. Set of 3.

Code: [503-062/10](#)

Product Group: [Wind measurement](#)



Wet & Dry Bulb Hygrometer

Code: 506-106

Product Group: Humidity measurement

- Easy to read.
- Use outdoors in a screen.

The wet and dry bulb hygrometer is designed for general use and consists of two undivided thermometers mounted on a printed plastic scale. Between the thermometers is a unique slide pointer which allows relative humidity to be easily read. The scale is housed in a plastic case which also holds a reservoir with anti-frost device

Further Information

Easy to read pattern, range -10 to +50°C Easy to read pattern, range -10 to +50°C Easy to read pattern, range -10 to +50°C Easy to read pattern, range -10 to +50°C Easy to read pattern, range -10 to +50°C Easy to read pattern, range -10 to +50°C Easy to read pattern, range -10 to +50°C Easy to read pattern, range -10 to +50°C