



IF IT'S WORTH BUILDING, IT'S WORTH TESTING

This wishlist was generated on 20/07/2018, and contains the following Products:

39-0045/01

Automatic/Manual 5 litre nominal capacity Mortar Mixer

39-1100

Three-gang Mould

24-9010

Straight Edge 300mm.

39-1150/01

Jolting Table 220 - 240 V 50 Hz

39-1120

Feeding Hopper

38-2015/01

Automatic Vicat Apparatus

38-2015/12

Needle Cleaning Device

38-2015/14

Printer Paper Rolls

38-2015/15

Mould Tank

38-2015/16

Consistency Plunger

38-2021

EN Initial and Final Set Needle

38-2300

EN Vicat Mould

82-5270

Non Hazardous Glass Thermometers -1 - +51°C

38-3005

Le Chatelier Mould

38-3200

Extensibility of Mould Apparatus BS

34-0140

300 mm Stainless Steel Rule.

38-3300

Tamping Rod

38-3420/01

Le Chatelier Water Bath

39-1170

Mortar Sand

82-3320

Porcelain Crucible

39-7160/01

ADR Touch Control PRO 250/25 Auto Cement Machine

39-6220

Set of Distance Pieces



Automatic/Manual 5 litre nominal capacity Mortar Mixer

Code: 39-0045/01

Product Group: Automatic/Manual 5 Litre Nominal Capacity Mortar Mixer

- New Microprocessor control
- New mix program selector
- Complies with latest EN Standards update
- Choice of automatic mixing cycles
- Sand and water dispenser supplied as standard

This mixer is designed to mix mortars and cement pastes to the requirements of the EN 196. The mixing paddle has a planetary motion and is driven by a motor with a microprocessor based speed and program controller. The mixer can be operated either in an automatic or manual mode. When the mixer is used in the manual mode, the two mixing speeds can be changed by means of a rocker switch, without switching off the motor. In the automatic mode any one of the preset mixing programs may be selected.

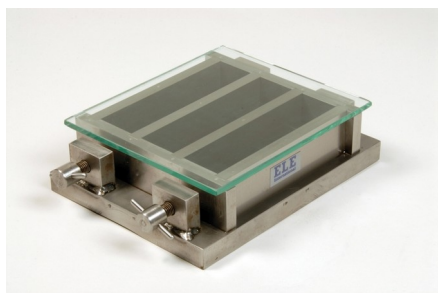
Further Information

****NOT AVAILABLE FOR SALE IN THE USA****

Complete with bowl and paddle, sand and Water dispensers. For 220V AC, 50 Hz, 1 ph.

Specification

Dimensions (l x w x h)	810 x 610 x 750 mm
Speeds (rpm) Low, High	Paddle: 140 ± 5, 285 ± 10 Mixing Head: 62 ± 5, 125 ± 10
Rated Power	180 W
Bowl Capacity	5 litres approx.
Weight	75 kg



Three-gang Mould

Code: [39-1100](#)

Product Group: [Moulding of Prisms](#)

For 40.1 x 40 x 160 mm mortar prisms. This mould is manufactured to a very high specification. Supplied with glass plate.

Standards

EN 196-1, EN 413-2, EN 459-2, EN 1015-10, EN 13454-2, ISO 679, BS 3892-1, BS 4551-1

Further Information

****NOT AVAILABLE FOR SALE IN THE USA****

Accessories



Feeding Hopper

Code: [39-1120](#)

Spares/Consumables



Glass Plate

Code: [39-1100/10](#)



Mortar Sand

Code: [39-1170](#)

Alternatives

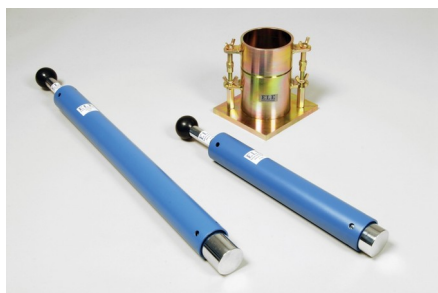
Product Sheet

www.ele.com
+44 (0) 01525 249 200



Feeding Hopper

Code: [39-1120](#)



Straight Edge 300mm.

Code: [24-9010](#)

Product Group: [BS/EN compaction test 4.5kg, Proctor compaction, Straightedge](#)

300 mm

Standards

BS 1377-4, BS 1924-2, ASTM D698, ASTM D1557, AASHTO T99, EN 13286-2, EN 13286-4, ASTM D1883, AASHTO T193, ASTM D558, ASTM D559, ASTM D560, AASHTO T134, AASHTO T135, AASHTO T136, AASHTO T180

Specification

Construction	Flat ground tool steel; beveled edge.
Dimensions	L x W x T (300mm x 40mm x 6mm).
Weight	550g

Accessories



ASTM Compaction Rammer 2.5Kg.

Code: [24-9063](#)

Alternatives



ASTM Compaction Rammer 2.5Kg.

Code: [24-9063](#)



Jolting Table 220 - 240 V 50 Hz

Code: [39-1150/01](#)

Product Group: [Jolting Table](#)

This machine consists of a mould table seated on a rotating cam driven at 60 revolutions per minute. The apparatus is supplied with a remote mains switch box, incorporating a push button start/stop control and automatic stop control at end of test.

Supplied without moulds.

Standards

EN 196-1, EN 413-2, EN 459-2, EN 1744-1, EN 1015-10, EN 1015-11, EN 13454-2, ISO 679, BS 3892-1, BS 4551-1

Further Information

****NOT AVAILABLE FOR SALE IN THE USA****

Specification

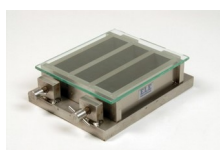
Motor rating	0.24 kW (1/3 hp)
Cam shaft RPM	60
Table lift	15 +/- 0.3 mm
Overall dimensions with swing bolts raised	(H x W x D) 340 x 400 x 1045 mm
Weight	90 kg

Accessories



Feeding Hopper

Code: [39-1120](#)



Three-gang Mould

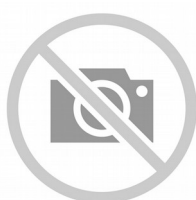
Code: [39-1100](#)

Spares/Consumables



Mortar Sand

Code: [39-1170](#)



Scraper

Code: [39-1130](#)

Alternatives



Jolting Table 220 - 240 V AC 60 Hz

Code: [39-1150/06](#)



Feeding Hopper

Code: [39-1120](#)

Product Group: [Moulding of Prisms](#)

For 39-1100 Mould.

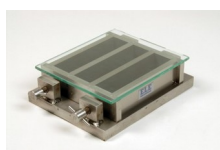
Standards

EN 196-1, EN 413-2, EN 459-2, EN 1744-1, EN 1015-10, EN 13454-2, ISO 679, BS 3892-1

Further Information

****NOT AVAILABLE FOR SALE IN THE USA****

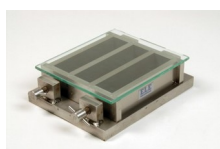
Accessories



Three-gang Mould

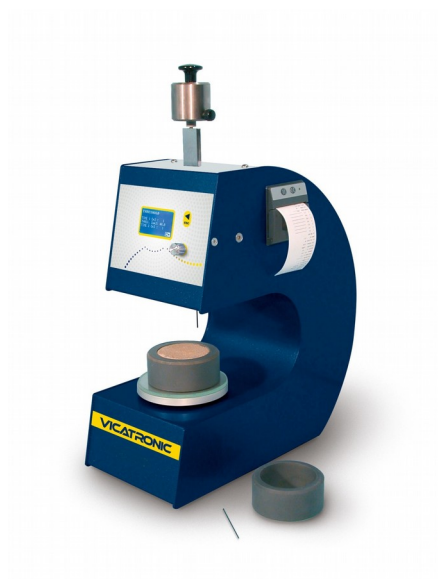
Code: [39-1100](#)

Alternatives



Three-gang Mould

Code: [39-1100](#)



Automatic Vicat Apparatus

Code: [38-2015/01](#)

Product Group: [Automatic Vicat](#)

Complete with EN and ASTM Initial and Final needles, Consistency Plunger, Windows(R) software and RS232 cable, 1 x EN and ASTM Mould and Glass Plate. Suitable for continuous use in saturated humidity, at a controlled temperature of $20^{\circ}\text{C} \pm 1^{\circ}\text{C}$.

Standards

ASTM C187, ASTM C191

Further Information

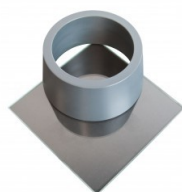
****NOT AVAILABLE FOR SALE IN THE USA****

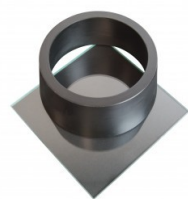
For 220 - 240 V AC, 50 - 60 Hz, 1 ph.

Accessories

ASTM Vicat Mould

Code: [38-2660](#)





EN Vicat Mould

Code: [38-2300](#)



Mould Tank

Code: [38-2015/15](#)



Needle Cleaning Device

Code: [38-2015/12](#)



Printer Paper Rolls

Code: [38-2015/14](#)



Vicat Mould

Code: [38-2200](#)

Spares/Consumables



ASTM Initial and Final Set Needle

Code: [38-2023](#)



Consistency Plunger

Code: [38-2015/16](#)



EN Initial and Final Set Needle

Code: [38-2021](#)



Needle Cleaning Device

Code: [38-2015/12](#)

Product Group: [Automatic Vicat](#)

Accessory.

Standards

ASTM C187, ASTM C191

Further Information

****NOT AVAILABLE FOR SALE IN THE USA****



Printer Paper Rolls

Code: [38-2015/14](#)

Product Group: [Automatic Vicat](#)

Accessory: pack of 10.

Standards

ASTM C187, ASTM C191, EN 196-3, EN 13454-2

Further Information

****NOT AVAILABLE FOR SALE IN THE USA****



Mould Tank

Code: [38-2015/15](#)

Product Group: [Automatic Vicat](#)

Accessory: for testing samples under water as per EN 196-3, for use in temperature controlled laboratories.

Standards

ASTM C187, ASTM C191

Further Information

****NOT AVAILABLE FOR SALE IN THE USA****



Consistency Plunger

Code: [38-2015/16](#)

Product Group: [Automatic Vicat](#)

Spare.

Standards

ASTM C187, ASTM C191

Further Information

****NOT AVAILABLE FOR SALE IN THE USA****



EN Initial and Final Set Needle

Code: [38-2021](#)

Product Group: [Automatic Vicat](#)

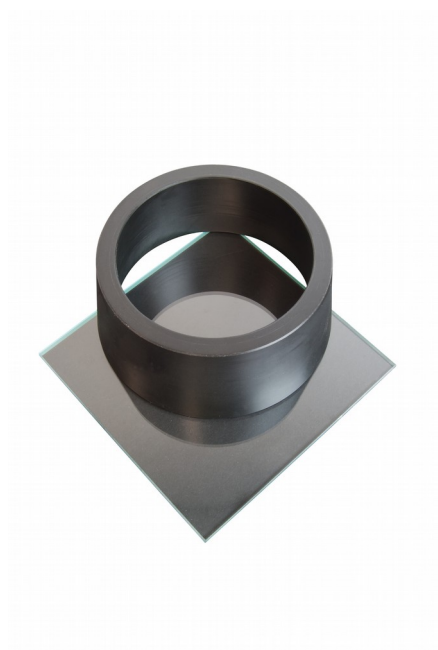
Spare: 1.13mm diameter and 1.13mm diameter with special footing.

Standards

ASTM C187, ASTM C191

Further Information

****NOT AVAILABLE FOR SALE IN THE USA****



EN Vicat Mould

Code: [38-2300](#)

Product Group: [Vicat Method, Automatic Vicat](#)

Accessory: manufactured from a hard rubber compound and supplied complete with a glass base plate.

Standards

EN 196-3

Further Information

****NOT AVAILABLE FOR SALE IN THE USA****

Accessories

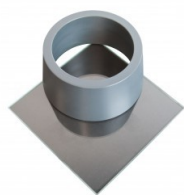
ASTM Initial Set Needle

Code: [38-2620](#)



ASTM Vicat Mould

Code: 38-2660



EN Initial and Final Set Needle

Code: 38-2110



Vicat Mould

Code: 38-2200



Spares/Consumables

Consistency Plunger

Code: 38-2010/10

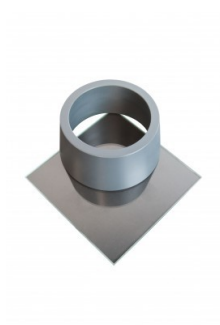


Alternatives



ASTM Initial Set Needle

Code: [38-2620](#)



ASTM Vicat Mould

Code: [38-2660](#)



EN Initial and Final Set Needle

Code: [38-2110](#)



Vicat Mould

Code: [38-2200](#)



Non Hazardous Glass Thermometers -1 - +51°C

Code: [82-5270](#)

Product Group: [Non Hazardous Glass Thermometers](#)

0.1°C divisions + total immersion

Further Information

****NOT AVAILABLE FOR SALE IN THE USA****



Le Chatelier Mould

Code: [38-3005](#)

Product Group: [General Expansion of Dry Hydrated Lime by the Le Chatelier Method, Soundness of Cement Paste by the Le Chatelier Method, Soundness](#)

Comprising a split cylinder fitted with two indicator stems. The mould is supplied complete with two glass plates and a weight 100 g \pm 10 g. Three moulds required for each test.

Standards

BS 6463, EN 196-3, EN 459-2

Further Information

****NOT AVAILABLE FOR SALE IN THE USA****

Accessories



Extensibility of Mould Apparatus BS

Code: [38-3200](#)



Extensibility of Mould Apparatus EN

Code: [38-3205](#)



Le Chatelier Water Bath

Code: [38-3420/01](#)



Tamping Rod

Code: [38-3300](#)



Trowel - Gauging

Code: [81-0335](#)



Extensibility of Mould Apparatus BS

Code: [38-3200](#)

Product Group: [General Expansion of Dry Hydrated Lime by the Le Chatelier Method](#)

Conforms to BS 6463. The unit comprises a metal sleeve with a hook and set screw to fit over one of the mould pointers, and a clamp to fit onto the other pointer of the mould. Supplied complete with one weight 100 g \pm 1 g.

Standards

EN 196-3

Further Information

****NOT AVAILABLE FOR SALE IN THE USA****

Accessories



Le Chatelier Water Bath

Code: [38-3420/01](#)



Tamping Rod

Code: [38-3300](#)



Trowel - Gauging

Code: [81-0335](#)

Alternatives



Le Chatelier Water Bath

Code: [38-3420/01](#)



Tamping Rod

Code: [38-3300](#)



Trowel - Gauging

Code: [81-0335](#)



300 mm Stainless Steel Rule.

Code: [34-0140](#)

Product Group: [Slump Test](#)

Standards

EN 12350-2

Further Information

****NOT AVAILABLE FOR SALE IN THE USA****



Tamping Rod

Code: 38-3300

Product Group: General Expansion of Dry Hydrated
Lime by the Le Chatelier Method

17 mm end diameter.

Further Information

****NOT AVAILABLE FOR SALE IN THE USA****

Accessories



Extensibility of Mould Apparatus BS

Code: 38-3200



Extensibility of Mould Apparatus EN

Code: 38-3205



Le Chatelier Water Bath

Code: 38-3420/01

Alternatives



Extensibility of Mould Apparatus BS

Code: 38-3200



Extensibility of Mould Apparatus EN

Code: 38-3205



Le Chatelier Water Bath

Code: 38-3420/01



Le Chatelier Water Bath

Code: [38-3420/01](#)

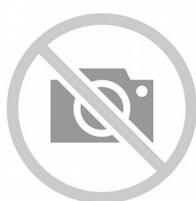
Product Group: [Soundness of Cement Paste by the Le Chatelier Method, Soundness](#)

Manufactured from corrosion resistant material, complete with a removable rack to hold up to twelve moulds and timer unit.

Further Information

****NOT AVAILABLE FOR SALE IN THE USA****

Accessories



Extensibility of Mould Apparatus BS

Code: [38-3200](#)



Tamping Rod

Code: [38-3300](#)



Trowel - Gauging

Code: [81-0335](#)

Alternatives



Extensibility of Mould Apparatus BS

Code: [38-3200](#)



Tamping Rod

Code: [38-3300](#)



Trowel - Gauging

Code: [81-0335](#)



Mortar Sand

Code: [39-1170](#)

Product Group: [Moulding of Prisms](#)

Graded pack for 3 prisms. 1350g pack.

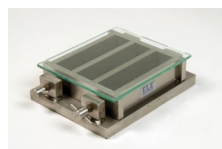
Standards

EN 196-1, EN 413-2, EN 459-2, EN 1744-1, EN 1015-10, EN 1015-11, EN 13454-2, ISO 679, BS 3892-1, BS 4551-1

Further Information

****NOT AVAILABLE FOR SALE IN THE USA****

Accessories



Three-gang Mould

Code: [39-1100](#)



Porcelain Crucible

Code: [82-3320](#)

Product Group: [Loss-on-Ignition, Bottles and Crucibles](#)

30ml capacity complete with lid.

Further Information

****NOT AVAILABLE FOR SALE IN THE USA****

Alternatives



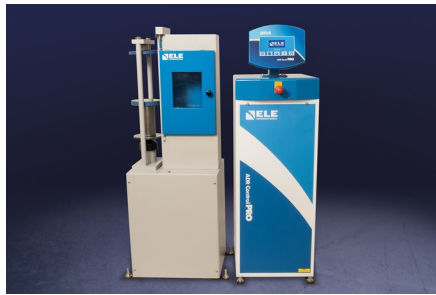
Heat of Hydration Apparatus

Code: [38-4600/06](#)



Heat of Hydration Apparatus

Code: [38-4600/01](#)



ADR Touch Control PRO 250/25 Auto Cement Machine

Code: 39-7160/01

Product Group: Activity Index, ADR Touch Control Pro 250/25 Auto Cement Machines

- 250 kN maximum capacity
- Calibration accuracy to BS EN ISO 7500-1; ASTM E4
- Automatic loading cycle
- 25 kN low capacity frame supplied as standard
- Tests a wide variety of specimen sizes
- Tests mortar, lime, cement and Fly Ash
- Complete with compression/flexural jigs and platen sets
- Supplied with Windows(R) download software as standard

The ADR Touch Control PRO 250/25 Machine provides consistent automatic testing of a wide range of specimens. The machine comprises a standard ELE 250/25 kN load frame and the new ADR Touch Control PRO console and incorporates all the features included in the ADR Touch Control PRO series concrete testing machines.

As standard the machine is supplied with platens fitted to the load frame, compression jig with 40 mm and 50mm/2 inch square platen sets and flexural jig for testing 40.1 x 40 x 160 mm prisms.

The availability of the 25 kN low capacity load frame as standard extends the test capability of the machine for low strength compression or flexural testing.

Standards

EN 196-1, EN 459-2, EN 1744, EN 1015-11, EN 13454-2, BS 3892-1, BS 4551-1, ASTM C109, ISO 679

Further Information

****Not available for sale in the USA****

The ADR Touch Control PRO will deliver all the features and quality of the established ADR-Auto range, with its 20 year history, but with a new sleek design and additional capabilities. The console assembly consists of an ADR Touch Control PRO and power base which can be used with all existing concrete and cement frames

USER INTERFACE

The new ADR Touch Control PRO has an improved user interface providing a high quality platform

for testing that will enhance the performance of our compression machines. It now has a larger 7-inch colour touch screen with a higher definition display, allowing easier observation of test progress. A favourites option is also available, allowing users to save the most common set-ups for immediate access, without the need for navigating through selection menus.

USER FLEXIBILITY

The ADR Touch Control PRO has a unique flexible head with rotation capabilities of 75-degrees and a 45-degree tilt, improving usability and comfort for individual users. It is available with four languages English, Spanish, Portuguese and French, making it even more user-friendly and accessible to a wider audience. The new LAN connectivity feature lets the operator use the PC based APP (ELE Logger) to download test results away from the test area. User flexibility has also increased with the new ADR Touch Control Pro as it can now be operated remotely, so tests can be initiated away from the test area. Many issues can be resolved quickly by our service team through the new remote diagnostics feature and updating to the latest version of software has never been easier.

COMPATIBILITY

The all new dual sensor capabilities allow users to test both concrete and cement samples on one frame. The ADR Touch Control PRO is compatible with all existing compression frames and upgrade kits are also available. The upgrade kits can be used to convert existing ADR-Auto consoles to the new Automatic Digital Control Readout.

TESTING TIMES

The new generation ADR Compression Machines have an increased control over the pace rate, which allows users to run the pace rate higher than average, but still within standard. This produces an average time saving of 10% for a typical 150mm cube sample.

ELECTRICAL

Reduced component count and no wire design results in increased reliability and serviceability. New low voltage interlocks and e-stop has increased safety. The ADR Touch Control PRO has the latest Arm Core Processor technology which has improved the processing power and speed.

Accessories



40mm Square Platen Set

Code: [39-5600/10](#)



Impact Printer Rs232 Serial Connection. Supplied Complete with 1 Paper Roll.

Code: [37-4859/01](#)



Pair of Square Platens 2"

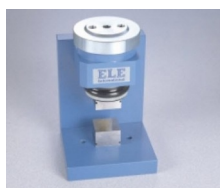
Code: [39-5600/11](#)



Set of Distance Pieces

Code: [39-6220](#)

Spares/Consumables



Compression Frame Jig Assembly

Code: [39-5600](#)



Flexural Jig Assembly

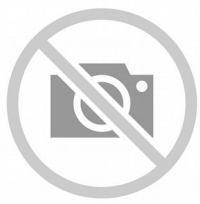
Code: [39-6160](#)

Alternatives



ADR Touch Control PRO 250/25 Auto Cement Machine

Code: [39-7160/06](#)



ADR Touch Manual with 250kN Frame and Jig 220-240v 50/60Hz

Code: [36-6166/01](#)



Set of Distance Pieces

Code: [39-6220](#)

Product Group: [Cement Testing Accessories](#)

Accessory: for testing samples 40mm, 50mm, 70.7mm and 100mm. Note: These items are required when testing above sample sizes NOT using the compression jig.

Further Information

****NOT AVAILABLE FOR SALE IN THE USA****