



IF IT'S WORTH BUILDING, IT'S WORTH TESTING

This wishlist was generated on 27/07/2018, and contains the following Products:

39-0410

Three-gang Mould

38-6000

Flow Table

38-3005

Le Chatelier Mould

38-3200

Extensibility of Mould Apparatus BS

38-3300

Tamping Rod

38-3420/01

Le Chatelier Water Bath

39-0045/01

Automatic/Manual 5 litre nominal capacity Mortar Mixer

78-5485/01

Electronic Balance - 22000 g x 0.1 g

81-0521

Stopwatch

39-1150/01

Jolting Table 220 - 240 V 50 Hz

39-1100

Three-gang Mould

38-2015/01

Automatic Vicat Apparatus

38-2015/12

Needle Cleaning Device

38-2015/14

Printer Paper Rolls

38-2015/15

Mould Tank

38-2012

Vicat Apparatus

88-6304

Glass Specific Gravity Bottle - 100 ml Capacity

525-375/01

Automatic distillation unit 220-240V 50/60Hz 1ph

34-6575/01

Large Curing Tank C/W with Circulating Pump Heater/Thermostat Unit and Lower Rack

81-0590

Vernier Caliper (LCD) Range 0 to 200mm X 0.01mm

38-1000

Blaine Air Permeability Apparatus

81-4020

Sample Tray - 306 x 306 x 38 mm

81-4030

Sample Tray - 406 x 406 x 50 mm

81-4080

Sample Tray - 610 x 610 x 63 mm

81-4160

Sample Tray - 910 x 910 x 76 mm

34-4570

150mm Cube Mould 4-Part Clamp Type. Cast Iron Construction. BS EN Compliant.

34-5260

150mm Dia Cylinder Mould 300mm Long.

42-1000/01

Buoyancy Balance 6Kg X 0.1G. Supplied with Support Frame Water Tank & Suspension Hook.

42-1005

Wire Basket Brass with Handle Nominal 6000Cm³ Capacity with 1.7mm Wire Mesh.

45-9305/01

Vacuum Pyknometer Apparatus

24-2885

Pyknometer Complete with Non-Corrodable Cone and Rubber Seal 1Kg Capacity

35-2302/09

Ultrasonic Concrete Tester 110-240V 50/60Hz 1Ph

35-2025

Rebar Detector and Covermeter

23-4250

Cbr/Core Cutter Extruder Frame and Hydraulic Jack Extrudes 150mm/6 Inch Diameter Specimens.

35-1500

Advanced SilverSchmidt Concrete Test Hammer

35-1530

Testing Anvil

34-0192

Slump Test Set BS & ASTM. C/W Slump Cone Base Plate Steel Rule Tamping Rod & Funnel.

34-0300/01

Vibro Consistometer

42-5315/01

Los Angeles Abrasion Machine Meets ASTM and European Standards. 220-240V 50Hz 1Ph.

42-5300/10

Set of 12 Abrasive Charges (ASTM).

79-5080

8in Dia ASTM Sieve 1.70mm Stainless Steel Mesh.

42-4005

Aggregate Impact Value Apparatus

34-6431/01

Vibrating Poker 25mm Dia Tip 290mm Long. 220-240V 50/60Hz 1Ph.

79-3510

450mm Dia BS Sieve 4.75 mm Stainless Steel Sieve. Perforated

79-3555

450mm Dia BS Sieve 10 mm Stainless Steel Sieve. Perforated

79-3565

450mm Dia BS Sieve 12.5 mm Stainless Steel Sieve. Perforated

79-3595

450mm Dia BS Sieve 20 mm Stainless Steel Sieve. Perforated

79-3645

450mm Dia BS Sieve 40 mm Stainless Steel Sieve. Perforated

79-3655

450mm Dia BS Sieve 50 mm Stainless Steel Sieve. Perforated

79-3670

450mm Dia BS Sieve 63 mm Stainless Steel Sieve. Perforated

79-3540

450mm Dia BS Sieve 8 mm Stainless Steel Sieve. Perforated

78-1250/01

225 Litre Drying Oven



Three-gang Mould

Code: [39-0410](#)

Product Group: [Moulding of 50 mm and 100 mm Specimens](#)

For 50mm mortar cubes. Manufactured from cast iron with simple cube release mechanism.

Standards

BS 1881-131, ASTM C109

Further Information

****NOT AVAILABLE FOR SALE IN THE USA****

Accessories



Mould Oil (25 Litre Drum)

Code: [82-7341](#)



Flow Table

Code: [38-6000](#)

Product Group: [Flow and Workability of Mortar Lime](#)

Manufactured from cast bronze as specified in BS and ASTM C230. Complete with Tripod and Baseplate.

Standards

BS 4551-1, BS 3892-1, ASTM C230

Further Information

****NOT AVAILABLE FOR SALE IN THE USA****

Accessories



ASTM Calipers

Code: [38-6080](#)



Flow Mould

Code: [38-6040](#)



Motorised Unit for the 38-6000 Flow Table

Code: [38-6100/01](#)



Plastic Tamper

Code: 38-6160



Le Chatelier Mould

Code: 38-3005

Product Group: General Expansion of Dry Hydrated Lime by the Le Chatelier Method, Soundness of Cement Paste by the Le Chatelier Method, Soundness

Comprising a split cylinder fitted with two indicator stems. The mould is supplied complete with two glass plates and a weight 100 g \pm 10 g. Three moulds required for each test.

Standards

BS 6463, EN 196-3, EN 459-2

Further Information

****NOT AVAILABLE FOR SALE IN THE USA****

Accessories



Extensibility of Mould Apparatus BS

Code: 38-3200



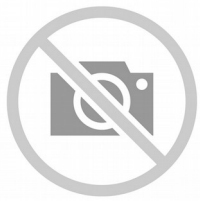
Extensibility of Mould Apparatus EN

Code: 38-3205



Le Chatelier Water Bath

Code: 38-3420/01



Tamping Rod

Code: [38-3300](#)



Trowel - Gauging

Code: [81-0335](#)



Extensibility of Mould Apparatus BS

Code: [38-3200](#)

Product Group: [General Expansion of Dry Hydrated Lime by the Le Chatelier Method](#)

Conforms to BS 6463. The unit comprises a metal sleeve with a hook and set screw to fit over one of the mould pointers, and a clamp to fit onto the other pointer of the mould. Supplied complete with one weight 100 g \pm 1 g.

Standards

EN 196-3

Further Information

****NOT AVAILABLE FOR SALE IN THE USA****

Accessories



Le Chatelier Water Bath

Code: [38-3420/01](#)



Tamping Rod

Code: [38-3300](#)



Trowel - Gauging

Code: [81-0335](#)

Alternatives



Le Chatelier Water Bath

Code: [38-3420/01](#)



Tamping Rod

Code: [38-3300](#)



Trowel - Gauging

Code: [81-0335](#)



Tamping Rod

Code: 38-3300

Product Group: General Expansion of Dry Hydrated
Lime by the Le Chatelier Method

17 mm end diameter.

Further Information

NOT AVAILABLE FOR SALE IN THE USA

Accessories



Extensibility of Mould Apparatus BS

Code: 38-3200



Extensibility of Mould Apparatus EN

Code: 38-3205



Le Chatelier Water Bath

Code: 38-3420/01

Alternatives



Extensibility of Mould Apparatus BS

Code: [38-3200](#)



Extensibility of Mould Apparatus EN

Code: [38-3205](#)



Le Chatelier Water Bath

Code: [38-3420/01](#)



Le Chatelier Water Bath

Code: [38-3420/01](#)

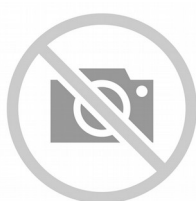
Product Group: [Soundness of Cement Paste by the Le Chatelier Method, Soundness](#)

Manufactured from corrosion resistant material, complete with a removable rack to hold up to twelve moulds and timer unit.

Further Information

****NOT AVAILABLE FOR SALE IN THE USA****

Accessories



Extensibility of Mould Apparatus BS

Code: [38-3200](#)



Tamping Rod

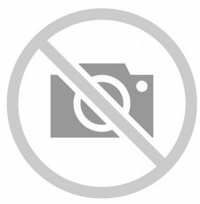
Code: [38-3300](#)



Trowel - Gauging

Code: [81-0335](#)

Alternatives



Extensibility of Mould Apparatus BS

Code: [38-3200](#)



Tamping Rod

Code: [38-3300](#)



Trowel - Gauging

Code: [81-0335](#)



Automatic/Manual 5 litre nominal capacity Mortar Mixer

Code: 39-0045/01

Product Group: Automatic/Manual 5 Litre Nominal Capacity Mortar Mixer

- New Microprocessor control
- New mix program selector
- Complies with latest EN Standards update
- Choice of automatic mixing cycles
- Sand and water dispenser supplied as standard

This mixer is designed to mix mortars and cement pastes to the requirements of the EN 196. The mixing paddle has a planetary motion and is driven by a motor with a microprocessor based speed and program controller. The mixer can be operated either in an automatic or manual mode. When the mixer is used in the manual mode, the two mixing speeds can be changed by means of a rocker switch, without switching off the motor. In the automatic mode any one of the preset mixing programs may be selected.

Further Information

****NOT AVAILABLE FOR SALE IN THE USA OR EUROPE****

Complete with bowl and paddle, sand and Water dispensers. For 220V AC, 50 Hz, 1 ph.

Specification

Dimensions (l x w x h)	810 x 610 x 750 mm
Speeds (rpm) Low, High	Paddle: 140 ± 5, 285 ± 10 Mixing Head: 62 ± 5, 125 ± 10
Rated Power	180 W
Bowl Capacity	5 litres approx.
Weight	75 kg



Electronic Balance - 22000 g x 0.1 g

Code: [78-5485/01](#)

Product Group: [Electronic Balances](#)

Further Information

****Not available for sale in the USA****

Specification

Capacity resolution	22000 g x 0.1 g
Pan size	400 x 300 mm
Mains and battery	Yes
Dimensions (w x d x h)	450 x 515 x 195 mm
Weight	7.6 kg
Weighing units	g, kg, ct, GN, N, lb, oz, lb:oz.



Stopwatch

Code: [81-0521](#)

Product Group: [Watches and Clocks](#)

Further Information

****NOT AVAILABLE FOR SALE IN THE USA****

Specification

Dimensions (mm)

64 x 53 x 19



Jolting Table 220 - 240 V 50 Hz

Code: [39-1150/01](#)

Product Group: [Jolting Table](#)

This machine consists of a mould table seated on a rotating cam driven at 60 revolutions per minute. The apparatus is supplied with a remote mains switch box, incorporating a push button start/stop control and automatic stop control at end of test.

Supplied without moulds.

Standards

EN 196-1, EN 413-2, EN 459-2, EN 1744-1, EN 1015-10, EN 1015-11, EN 13454-2, ISO 679, BS 3892-1, BS 4551-1

Further Information

****NOT AVAILABLE FOR SALE IN THE USA****

Specification

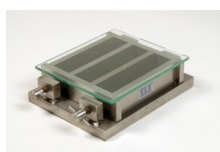
Motor rating	0.24 kW (1/3 hp)
Cam shaft RPM	60
Table lift	15 +/- 0.3 mm
Overall dimensions with swing bolts raised	(H x W x D) 340 x 400 x 1045 mm
Weight	90 kg

Accessories



Feeding Hopper

Code: [39-1120](#)



Three-gang Mould

Code: [39-1100](#)

Spares/Consumables



Mortar Sand

Code: [39-1170](#)



Scraper

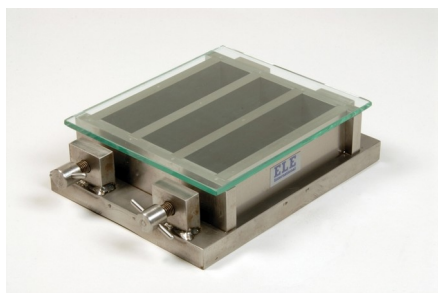
Code: [39-1130](#)

Alternatives



Jolting Table 220 - 240 V AC 60 Hz

Code: [39-1150/06](#)



Three-gang Mould

Code: [39-1100](#)

Product Group: [Moulding of Prisms](#)

For 40.1 x 40 x 160 mm mortar prisms. This mould is manufactured to a very high specification. Supplied with glass plate.

Standards

EN 196-1, EN 413-2, EN 459-2, EN 1015-10, EN 13454-2, ISO 679, BS 3892-1, BS 4551-1

Further Information

****NOT AVAILABLE FOR SALE IN THE USA****

Accessories



Feeding Hopper

Code: [39-1120](#)

Spares/Consumables



Glass Plate

Code: [39-1100/10](#)



Mortar Sand

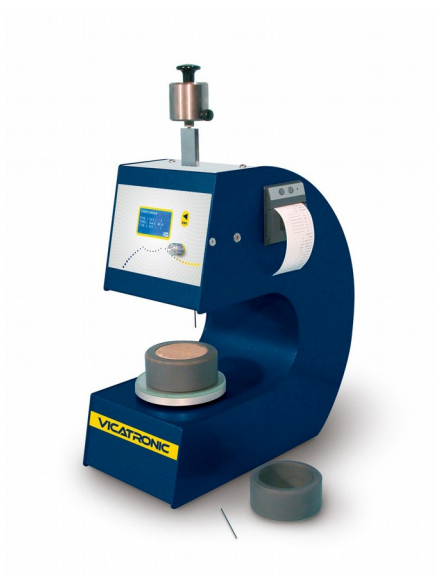
Code: [39-1170](#)

Alternatives



Feeding Hopper

Code: [39-1120](#)



Automatic Vicat Apparatus

Code: [38-2015/01](#)

Product Group: [Automatic Vicat](#)

Complete with EN and ASTM Initial and Final needles, Consistency Plunger, Windows(R) software and RS232 cable, 1 x EN and ASTM Mould and Glass Plate. Suitable for continuous use in saturated humidity, at a controlled temperature of $20^{\circ}\text{C} \pm 1^{\circ}\text{C}$.

Standards

ASTM C187, ASTM C191

Further Information

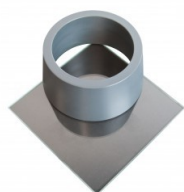
****NOT AVAILABLE FOR SALE IN THE USA****

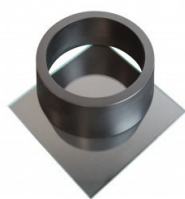
For 220 - 240 V AC, 50 - 60 Hz, 1 ph.

Accessories

ASTM Vicat Mould

Code: [38-2660](#)





EN Vicat Mould

Code: [38-2300](#)



Mould Tank

Code: [38-2015/15](#)



Needle Cleaning Device

Code: [38-2015/12](#)



Printer Paper Rolls

Code: [38-2015/14](#)



Vicat Mould

Code: [38-2200](#)

Spares/Consumables



ASTM Initial and Final Set Needle

Code: [38-2023](#)



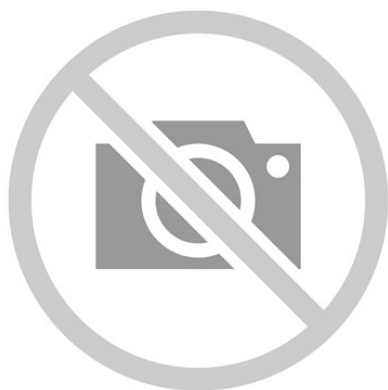
Consistency Plunger

Code: [38-2015/16](#)



EN Initial and Final Set Needle

Code: [38-2021](#)



Needle Cleaning Device

Code: [38-2015/12](#)

Product Group: [Automatic Vicat](#)

Accessory.

Standards

ASTM C187, ASTM C191

Further Information

****NOT AVAILABLE FOR SALE IN THE USA****



Printer Paper Rolls

Code: [38-2015/14](#)

Product Group: [Automatic Vicat](#)

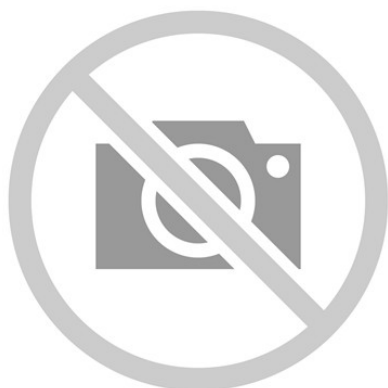
Accessory: pack of 10.

Standards

ASTM C187, ASTM C191, EN 196-3, EN 13454-2

Further Information

****NOT AVAILABLE FOR SALE IN THE USA****



Mould Tank

Code: [38-2015/15](#)

Product Group: [Automatic Vicat](#)

Accessory: for testing samples under water as per EN 196-3, for use in temperature controlled laboratories.

Standards

ASTM C187, ASTM C191

Further Information

****NOT AVAILABLE FOR SALE IN THE USA****



Vicat Apparatus

Code: [38-2012](#)

Product Group: [Vicat Apparatus](#)

Includes Vicat needle and mould.

Standards

ASTM C91, ASTM C187, ASTM C191, AASHTO T129, AASHTO T131

Specification

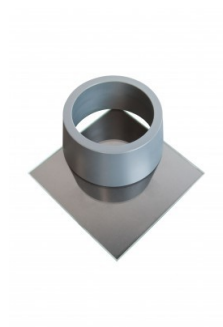
Plunger	Reversible; 10 mm diam. at one end and 1 mm diam. needle at other end; combined weight 300 grams.
Needle	Steel; mounted in plunger; 1 mm diam. x 50 mm long.
Scale	Graduated in millimeters.
Mold	Hard rubber; 70 mm base diam. x 60 mm top diam. x 40 mm h.
Weight	Net 4 lbs. (1.8 kg).

Accessories

ASTM Initial Set Needle

Code: [38-2620](#)





ASTM Vicat Mould

Code: 38-2660



Glass Specific Gravity Bottle - 100 ml Capacity

Code: 88-6304

Product Group: Glass Specific Gravity Bottles

Alternatives



Glass Specific Gravity Bottle - 25 ml Capacity

Code: 88-6300



Glass Specific Gravity Bottle - 250 ml Capacity

Code: [88-6306](#)



Glass Specific Gravity Bottle - 50 ml Capacity

Code: [88-6302](#)



Automatic distillation unit 220-240V 50/60Hz 1ph

Code: [525-375/01](#)

Product Group: [Kjedahl apparatus](#)

- Fully automatic steam generator.
- Electronic control of steam pressure and water level.
- Programmable, utilising microprocessor control.

This distillation unit is fully automatic with full microprocessor control. The operator has only to insert the digestion tube and the distillate receiver vessel.

The control display is a back-lit LCD with 2 x 16 character lines. Information is entered via the touch sensitive keypad which has numerical characters for entering distillation program parameters, and manual function keys to activate the chemical addition pumps and for programming.

There are 10 programmes with 0-8 for Kjeldahl and associated distillations and 9 for alternative distillation work. Each of the programmes have the following variables entered in sequence. All the programme steps are controlled by time with chemical addition pumps having a known flow rate of 13 ml/second.

The unit is divided into 4 chambers, distillation, instrumentation, steam generation and chemical pumps, for maximum protection of the various components. All the functions of the unit are monitored and errors are displayed on the character display.

This unit has a manual end point titration.

Further Information

For 220-240 V, 50/60 Hz, 1 ph.

Accessories



Storage tanks for automatic distillation units-set of 3

Code: [525-376](#)



Large Curing Tank C/W with Circulating Pump Heater/Thermostat Unit and Lower Rack

Code: [34-6575/01](#)

Product Group: [Expansion \(swell\) Test Equipment, Large Curing Tank](#)

This Large Curing Tank is supplied complete with a submersible pump, immersion heater/thermostat unit and separate control panel. The tank includes a lower rack as standard and is designed to maintain the temperature at $20 \pm 2^{\circ}\text{C}$, providing that the ambient temperature does not fall below 15°C or rise above 20°C .

Standards

EN 12390-2, ASTM C31, AASHTO T23

Further Information

****NOT AVAILABLE FOR SALE IN THE USA****

Supplied as specified. For 220 - 240 V AC, 50 - 60 Hz, 1 ph.

Specification

Internal Dimensions	1040 x 1040 x 605 mm (l x w x h)
Capacity	650 litres
Rated Power	2000 watt
Weight	60 kg

Accessories



Maximum and Minimum Thermometer

Code: [82-5310](#)

Alternatives



Jolting Table 220 - 240 V AC 60 Hz

Code: 39-1150/06



Vernier Caliper (LCD) Range 0 to 200mm X 0.01mm

Code: [81-0590](#)

Product Group: [Determination of the Shape Index,](#)
[Miscellaneous Laboratory Hardware](#)

Dual measuring range highly accurate vernier caliper 0 to 200mm x 0.01mm (8 inch x 0.001 inch) to comply with bs 887 and bs 6365. Complete with liquid crystal display.

Standards

EN 933-4

Further Information

****NOT AVAILABLE FOR SALE IN THE USA****

Accessories



Vibrating Hammer

Code: [47-0455/01](#)

Alternatives



Vibrating Hammer

Code: [47-0455/01](#)



Blaine Air Permeability Apparatus

Code: 38-1000

Product Group: Blaine Fineness Apparatus,
Determination of Fineness Blaine Apparatus

Standards

EN 196-6, EN 459-2, EN 13286-44, BS 4359-2, ASTM C204, AASHTO T153

Specification

Cell	Stainless steel; 12.70 \pm 0.10 mm i.d.
Disk	0.9 \pm 0.1 mm thick with 30-40 one mm diam. holes.
Plunger	Stainless steel.
Manometer	U-tube glass with ground joint, stop cock and rubber bulb assembly.
Filter Paper	12.70 mm diam.
Fluid	Pure Mineral Oil.
Weight	Net 7 lbs. (3.2 kg).

Accessories



Electronic Balance - 620 g x 0.001 g

Code: 78-5405/01



Filter Papers

Code: 38-0650



Pure Mineral Oil 1 Litre Bottle.

Code: 38-0620



Reference Cement

Code: 38-0640



Reference Cement

Code: 38-0645

Spares/Consumables



Aspirator

Code: 38-0500/11



Blaine Air Permeability Cell

Code: [38-1000/15](#)



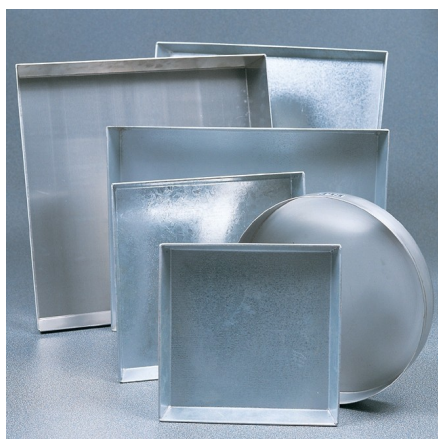
Filter Paper

Code: [38-0652](#)



Manometer U-tube

Code: [38-1000/10](#)



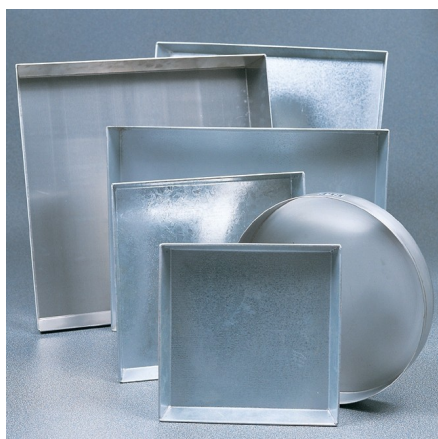
Sample Tray - 306 x 306 x 38 mm

Code: [81-4020](#)

Product Group: [Sample Trays](#)

Further Information

****NOT AVAILABLE FOR SALE IN THE USA****



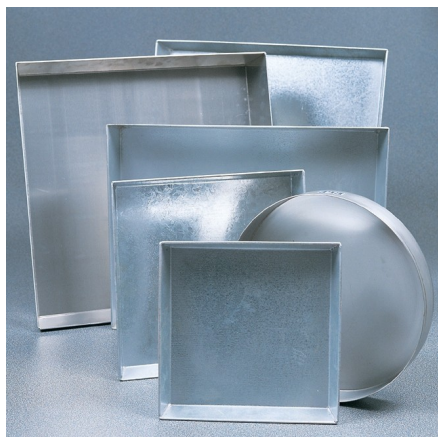
Sample Tray - 406 x 406 x 50 mm

Code: [81-4030](#)

Product Group: [Sample Trays](#)

Further Information

****NOT AVAILABLE FOR SALE IN THE USA****



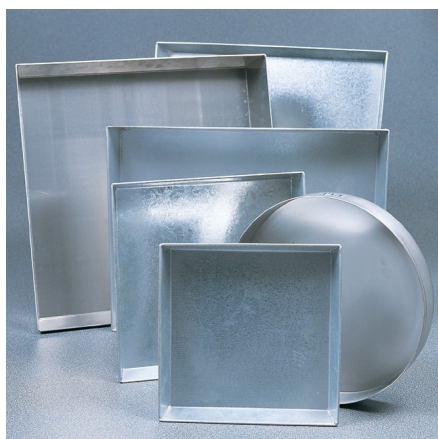
Sample Tray - 610 x 610 x 63 mm

Code: [81-4080](#)

Product Group: [Sample Trays](#)

Further Information

****NOT AVAILABLE FOR SALE IN THE USA****



Sample Tray - 910 x 910 x 76 mm

Code: [81-4160](#)

Product Group: [Sample Trays](#)

Further Information

****NOT AVAILABLE FOR SALE IN THE USA****



150mm Cube Mould 4-Part Clamp Type. Cast Iron Construction. BS EN Compliant.

Code: [34-4570](#)

Product Group: [Cube Moulds](#), [Cube Moulds](#)

4-part with clamp attached base plate.

Standards

BS 1881-108, EN 12390-1, EN 12390-2

Specification

Construction	Bolted sides and clamped base plate
Finish	Painted
Weight	42 lb (19.1 kg)

Accessories



Aluminium Scoop Large

Code: [81-0220](#)



Compacting Bar 25mm Sq X 380mm

Code: [34-2910](#)



Float - Plasterer's type

Code: [81-0340](#)



Mould Oil (25 Litre Drum)

Code: [82-7341](#)



Wire Brush

Code: [81-0705](#)

Spares/Consumables



Soft Headed Mallet.

Code: [29-5020](#)

Alternatives



Vibrating Table 600 X 400mm Table Top. 220-240V 50Hz 1Ph. Supplied with clamping assembly

Code: [34-6250/01](#)



150mm Dia Cylinder Mould 300mm Long.

Code: [34-5260](#)

Product Group: [Cylinder Moulds](#)

150 mm diameter x 300 mm long, complete with base plate and locking ring.

Standards

EN 12390-1, EN 12390-2

Further Information

****NOT AVAILABLE FOR SALE IN THE USA****

Accessories



Aluminium Scoop Large

Code: [81-0220](#)



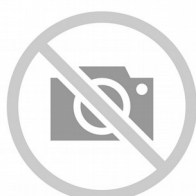
Compacting Bar 25mm Sq X 380mm

Code: [34-2910](#)



Float - Plasterer's type

Code: [81-0340](#)



Mould Oil (25 Litre Drum)

Code: [82-7341](#)



Tamping Rod 16mm Dia X 600mm long hemispherical at both ends.

Code: [34-0130](#)



Wire Brush

Code: [81-0705](#)

Spares/Consumables



Soft Headed Mallet.

Code: [29-5020](#)

Alternatives



Vibrating Table 600 X 400mm Table Top. 220-240V 50Hz 1Ph. Supplied with clamping assembly

Code: [34-6250/01](#)



Buoyancy Balance 6Kg X 0.1G. Supplied with Support Frame Water Tank & Suspension Hook.

Code: [42-1000/01](#)

Product Group: [Particle Density \(specific gravity\) and Water Absorption for Coarse Aggregates](#)

The buoyancy balance system developed by ELE consists of a rigid support frame, incorporating a water tank mounted on a platform. A mechanical lifting device is used to raise the water tank through the frame height immersing the specimen suspended below the balance. The balance supplied may also be used as a standard weighing device, thus providing a versatile and comprehensive weighing system in the laboratory. 6000 g x 0.1 g supplied with frame, water tank and suspension hook.

Standards

EN 1097-6, EN 12697-6, BS 812, ASTM C127, AASHTO T85

Further Information

****NOT AVAILABLE FOR SALE IN THE USA****

For 220 - 240 V AC, 50 - 60 Hz, 1 ph.

Accessories



200 mm Diameter Lid

Code: [79-0010](#)



200 mm Diameter Receiver

Code: [79-0020](#)



200mm Dia BS Sieve 31.5mm Perforated Plate.

Code: [79-1630](#)



200mm Dia BS Sieve 4.00mm Stainless Steel Mesh.

Code: [79-0310](#)



200mm Dia BS Sieve 63 Mic Stainless Steel Mesh.

Code: [79-0070](#)



200mm Dia BS Sieve 63.0mm Perforated Plate.

Code: [79-1670](#)



Digital Pocket Thermometer

Code: [82-5420](#)



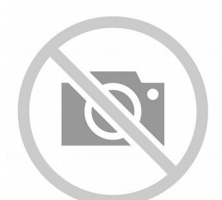
Sample Container - Tinned Steel 10 litres

Code: [81-3060](#)



Sample Tray - 406 x 406 x 50 mm

Code: [81-4030](#)



Wire Basket Brass with Handle Nominal 6000Cm³ Capacity with 1.7mm Wire Mesh.

Code: [42-1005](#)



Wire Basket Brass with Handle Nominal 6000Cm³ Capacity with 1.7mm Wire Mesh.

Code: 42-1005

Product Group: Particle Density (specific gravity) and
Water Absorption for Coarse Aggregates

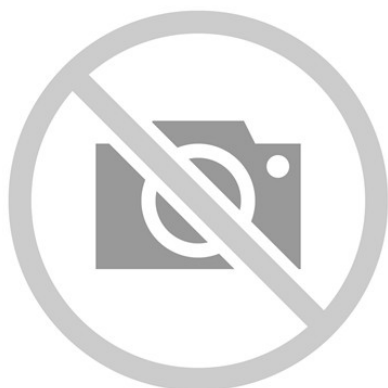
For BS 812 Relative Density. 200 mm diameter x 190
mm deep, 1.70 mm wire mesh.

Standards

EN 1097-6, EN 12697-6, BS 812, ASTM C127, AASHTO T85

Further Information

NOT AVAILABLE FOR SALE IN THE USA



Vacuum Pyknometer Apparatus

Code: 45-9305/01

Product Group: Vacuum Pyknometer

- Large capacity design minimises segregation effects
- Lightweight polycarbonate construction
- Transparent top for visual observations

The Vacuum Pyknometer is a large capacity unit used in the Rice Test for determining the maximum specific gravity of bituminous paving mixtures.

The Pyknometer has a total volume of approximately 10 litres and will conveniently accept samples of 6000 grams to minimise segregation effects. The unit is constructed of lightweight polycarbonate, with the upper half being transparent for visual observation of the effects of the vacuum.

The Vacuum Pyknometer Apparatus consists of a 6000 g pyknometer, vacuum pump with control valves/gauges, water trap and connection tubing.

Standards

EN 12697-5

Further Information

****NOT AVAILABLE FOR SALE IN THE USA****

Supplied complete with 6000 g pyknometer, vacuum pump with control valves/gauges, water trap and connection tubing. For 220 - 240 V AC, 50 Hz, 1ph.

Specification

Dimensions	273 x 406 mm (outside diameter x height)
Capacity	Approx. 10 litres, 6000 g sample weight
Connections	Water inlet valve; quick disconnect for vacuum gauge and hose
Weight	3.6 kg

Alternatives

Product Sheet

www.ele.com
+44 (0) 01525 249 200



Vacuum Pyknometer, 6000 g

Code: [45-9300](#)



Pyknometer Complete with Non-Corrodable Cone and Rubber Seal 1Kg Capacity

Code: [24-2885](#)

Product Group: [Particle Density: Pyknometer
Methods, Pycnometer Top and Jar](#)

Glass jar complete with noncorrodible cone.

Standards

BS 1377, BS 812-2, EN 1097-7, EN 1997-2, ASTM D854, AASHTO T100, ASTM C128, AASHTO T84

Accessories



100MI Density Bottle with Perforated Stopper.

Code: [24-2950](#)



50MI Density Bottle with Perforated Stopper.

Code: [24-2900](#)



Density Bottle 25ML.

Code: [24-2890](#)



Pyknometer Gasket

Code: [24-2885/11](#)



Pyknometer Jar Only

Code: [24-2885/10](#)



Pyknometer Top

Code: [24-2885/12](#)

Alternatives



Sand Absorption Cone.

Code: [42-1700](#)



Ultrasonic Concrete Tester 110-240V 50/60Hz 1Ph

Code: 35-2302/09

Product Group: Ultrasonic Detection, Ultrasonic
Concrete Test

35-2302/09 is the most versatile Concrete Tester to date. It has all the functions of the classic Concrete Tester, but offers additional benefits.

Designed with laboratory use in mind, its compact size, rugged construction and optimized power consumption make it equally suitable for on-site use.

Along with the traditional transit time and pulse velocity measurement, 35-2302/09 offers path length measurement, perpendicular crack depth measurement and surface velocity measurement.

Optimized pulse shaping gives greater transmission range at lower voltage levels. This coupled with automated combination of the transmitter voltage and the receiver gain ensures an optimum received signal level, ensuring accurate and stable measurements.

The waveform can be viewed either via an external oscilloscope connection or directly on a connected PC screen.

Full remote control capability completes the package.

Complete with two 54 kHz transducers each with 3.6 metres of cable, coupling agent, carrying case and instruction manual.

Applications include pulse velocity determination, quality assessment and uniformity, modulus of elasticity measurement, curing status evaluation, crack depth estimation, assessment of fibre reinforced concrete.

Consists of display unit, 2 transducers (54 kHz), 2 BNC cables 1.5m, couplant, calibration rod, USB charger with USB-cable, 4x AA (LR6) batteries, data carrier with software, documentation and carrying case.

Standards

BS 1881-203, EN 12504-4, ASTM C597, D2845

Further Information

For 110 - 240 V AC, 50 - 60 Hz, 1 ph.

Specification

Measuring range	Up to 15 m depending on concrete quality
Bandwidth	20 to 500 kHz
Technology	Ultrasonic pulse velocity
Measuring resolution	0.1 us
Pulse voltage UPV	125 to 500 V
Receiver gain	1x, 10x, 100x, auto
Pulse shape	Square wave
Nominal transducer frequency	24-500 kHz
Number of channels	1

Spares/Consumables



Ultrasound Couplant Supplied In 250ml bottle

Code: [35-2305](#)



Rebar Detector and Covermeter

Code: [35-2025](#)

Product Group: [Rebar Detection](#)

The Rebar Detector and Covermeter is a versatile, fully-integrated rebar detector and cover meter with a unique real-time rebar visualisation allowing the user to see the location of the rebar beneath the concrete surface to a maximum depth of 180 mm. This is coupled with rebar-proximity indicators and optical and acoustical locating aids. Rebar diameter can also be estimated within the specified testing range. The Rebar Detector and Covermeter combines these unique features in a compact, light device that allows the user to operate this rebar detector with one hand making the task of locating rebars a simple and efficient process. In addition, ELE's rebar detector convinces through its intuitive user interface making rebar detection easy.

NOT AVAILABLE FOR SALE IN THE USA

Further Information

- A rebar detector with real-time visualisation of the rebars beneath the instrument
- Visual indication of rebars in close proximity
- The 35-2025 is a rebar detector with the ability to identify the mid-point between rebars as well as the orientation of rebars
- Optical and acoustical indication of rebar location and minimum cover alert
- This rebar detector offers neighbouring bar correction
- Regional settings (metric, imperial)
- Cordless and single handed operation
- Switchable display backlight for dark environments
- A rebar detector with icon-based language independent menus
- Start-up test kit allows user to familiarize him/herself with all functions in a comfortable environment, wasting no time on site

Specification

Power Supply	2 x 1.5 V AA Batteries
Voltage Range	3.6 V to 1.8 V
Dimensions	205 x 92 x 41 mm (8 x 3.6 x 1.6")
Temperature Range	-10°C to 60°C (14°F to 140°F)
Humidity Range	0 to 100% rH
Protection Range	IP54



Cbr/Core Cutter Extruder Frame and Hydraulic Jack Extrudes 150mm/6 Inch Diameter Specimens.

Code: [23-4250](#)

Product Group: [Soil Extruders](#)

Comprises a frame and hydraulic jack with adaptor plate supplied. Extrudes samples from BS CBR Mould and ASTM CBR Mould.

Standards

BS 1377-1

Accessories



Adaptor Plate for 23-4250 to Extrude 100mm/4 Inch Diameter and Marshall Specimens.

Code: [23-4300](#)

Alternatives



38mm Hand Operated Hydraulic Sample Extruder with Trimming Knife 38mm Split Former & Cutting Tool.

Code: [23-4090](#)



Proctor/Core Cutter Extruder Frame and Hydraulic Jack. Extrudes 100mm/4 Inch Diameter Specimens

Code: [23-4200](#)



Advanced SilverSchmidt Concrete Test Hammer

Code: 35-1500

Product Group: Surface Hardness, Surface Hardness

The SilverSchmidt ST/PC is the first integrated concrete test hammer featuring true rebound value and unmatched repeatability.

Two factors contribute to the improved performance of this concrete test hammer over its predecessors:

- Velocity based detection of the rebound quotient
- The lightweight hybrid design of the impact plunger is made from aerospace alloy, matched to the elastic properties of the concrete and equipped with a hardness steel cap

Independent validation testing by BAM (Federal Institute for Materials Research and Testing, Germany) has shown the SilverSchmidt ST/PC to have less dispersion than the classical concrete test hammer over the entire range.

The unique design and high quality construction of the concrete test hammer SilverSchmidt ST/PC makes rebound hammer testing quicker and more accurate than ever before.

Standards

EN 12504-2, EN 13791, ASTM C805

Further Information

- The SilverSchmidt ST/PC concrete test hammer combines a high measurement accuracy with an unmatched repeatability.
- The rebound value requires no angular correction
- The concrete test hammer offers customer conversion curves for a wide range of compressive concrete strengths, including low f_c (<10 N/mm², 1'450 psi) and high strength concrete (up to 100 N/mm², 14'500 psi)

- A large number of measurement points can be easily collected by the concrete test hammer and automatically evaluated according to statistical data
- The concrete test hammer offers automatic conversion to the required measurement unit (MPa, N/mm², kg/cm², psi)

Specification

Technical Data	Silver Schmidt
Impact Energy	2.207 Nm
Hammer Mass	135 g
Spring Constant	0.79 N/mm
Spring Extension	75 mm (2.95")
Dimensions	55 x 55 x 255 mm (2.16" x 2.16" x 9.84")
Concrete Compressive Strengths	10-100 N/mm ² (1450-14500 psi)
Weight	570 g (1.4 lb)

Accessories



SilverSchmidt Anvil

Code: [35-1500/10](#)



Testing Anvil

Code: [35-1530](#)

Product Group: [Concrete Test Hammer](#), [Surface Hardness](#), [Testing Anvil](#)

Standards

ASTM C805



Slump Test Set BS & ASTM. C/W Slump Cone Base Plate Steel Rule Tamping Rod & Funnel.

Code: [34-0192](#)

Product Group: [Slump Test](#)

BS and ASTM comprising of slump cone, base plate, steel rule, tamping rod and funnel.

Further Information

****NOT AVAILABLE FOR SALE IN THE USA****

Accessories



Sample Tray - 1200 x 1160 x 50 mm

Code: [81-4230](#)



Shovel - With flat blade

Code: [81-0240](#)

Spares/Consumables



Stopwatch

Code: [81-0521](#)



Vibro Consistometer

Code: [34-0300/01](#)

Product Group: [Vebe Time](#)

Comprising of vibrating table, container, slump cone, graduated rod and plate. For 220 - 240 V AC, 50 Hz, 1 ph.

Further Information

****NOT AVAILABLE FOR SALE IN THE USA****

Accessories



Aluminium Scoop Large

Code: [81-0220](#)



Sample Tray - 1200 x 1160 x 50 mm

Code: [81-4230](#)



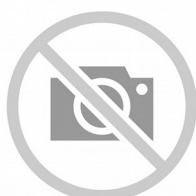
Shovel - With flat blade

Code: [81-0240](#)



Tamping Rod 16mm Dia X 600mm long hemispherical at both ends.

Code: [34-0130](#)



Transparent Disc for Vibro Consistometer 34-0300

Code: [34-0300/10](#)

Spares/Consumables



Stopwatch

Code: [81-0521](#)



Los Angeles Abrasion Machine Meets ASTM and European Standards. 220-240V 50Hz 1Ph.

Code: [42-5315/01](#)

Product Group: [Los Angeles Abrasion Machine](#), [Los Angeles Abrasion Machine](#)

The machine consists of a closed hollow cylindrical steel drum rotating around its horizontal axis on ball bearing units mounted on a sturdy base framework.

The drum is driven at a speed of between 30 - 33 rpm via an enclosed belt drive arrangement from an electric motor/gearbox unit situated on the base frame. Inside the drum a full length steel shelf is attached, accessed by a dust-proof opening.

The cylinder incorporates a removable internal shelf, one shelf position is provided to meet the requirements of both the ASTM and EN test standards.

Controls are located easily on the right-hand side of the machine at convenient operator height.

Start and stop push buttons and a subtracting revolution counter allows the user to preset the number of revolutions before an automatic stop.

Standards

EN 1097-2, ASTM C131, ASTM C535, AASHTO T96, NF P18-573

Further Information

For 220 - 240 V AC, 50 Hz, 1ph.

Specification

Capacity	5,000 g each of aggregate and charge.
Drum Speed	30-33 rpm.
Frame	Welded structural steel.
Counter	Adjustable; automatic shut-off; push-button reset and adjustment.
Controls	Magnetic motor starter with overload protection and integral On-Off switches.
Dimensions	38.6" w. x 36.2" d. x 38.6" h. (980 x 920 x 980 mm).
Weight	Net 882 lbs. (400 kg).

Motor

1 HP

Accessories

Set of 12 Abrasive Charges (ASTM).

Code: [42-5300/10](#)



Set of 12 Abrasive Charges EN)

Code: [42-5305/10](#)



Alternatives



Los Angeles Abrasion Machine Meets ASTM and European Standards. 220-240V 60Hz 1Ph.

Code: [42-5315/06](#)



Los Angeles Abrasion Machine with CE Safety Cabinet W/ Microswitches. 220-240V 50Hz 1Ph.

Code: [42-5310/01](#)



Los Angeles Abrasion Machine with CE Safety Cabinet W/ Microswitches. 220-240V 60Hz 1Ph.

Code: [42-5310/06](#)



Set of 12 Abrasive Charges (ASTM).

Code: [42-5300/10](#)

Product Group: [Los Angeles Abrasion Machine](#), [Los Angeles Abrasion Machine](#)

ASTM Set of 12.

Standards

EN 1097-2, ASTM C131, ASTM C535, AASHTO T96



8in Dia ASTM Sieve 1.70mm Stainless Steel Mesh.

Code: 79-5080

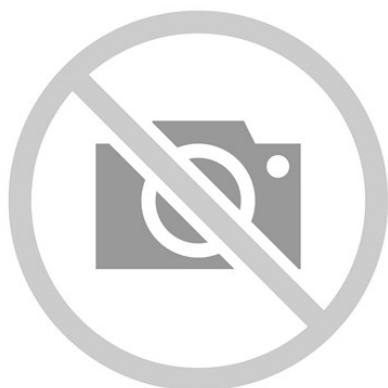
Product Group: 8in Dia ASTM Brass Sieves, 8" Diameter ASTM Sieves, 8" Diameter ASTM Sieves, 8" Diameter ASTM Sieves

Standards

ASTM E11

Specification

Frames	Full height; 2 1/4" (51 mm) depth to mesh.
Construction	Polished and lacquered brass with S.S. mesh.
Nameplates	Show standard, alternate and Tyler Screen Scale equivalent designations.
Weights	Net 1 lb. (453 g).
Sieve Size or Number	No. 12
Sieve Opening Standard	1.70 mm
Sieve Opening Alternative (in.)	0.0661



Aggregate Impact Value Apparatus

Code: [42-4005](#)

Product Group: [Aggregate Impact Value \(AIV\)](#),
[Aggregate Impact Value \(AIV\)](#)

Heavy duty construction, heavily plated assembly ensures corrosion resistance.



Vibrating Poker 25mm Dia Tip 290mm Long. 220-240V 50/60Hz 1Ph.

Code: [34-6431/01](#)

Product Group: [Vibrating Poker](#)

- High amplitude and speed
- Flexible shaft for long life

Used as an internal means of vibratory compaction. The poker is inserted into the concrete which is then compacted by the high frequency vibration action. For use in either laboratory or site environments, the diameter of the vibrating tip must not exceed 25% of the smallest dimension of the specimen.

Standards

EN 12390-2

Further Information

****NOT AVAILABLE FOR SALE IN THE USA****

For 220 - 240 V AC, 50 - 60 Hz, 1 ph

Specification

Tip Dimensions	25 mm diameter x 290 mm long
Shaft dimensions	2.0 m long
Speed	12,000 vibrations/min.
Overall Dimensions	200 x 300 x 350 mm
Weight	7 kg



450mm Dia BS Sieve 4.75 mm Stainless Steel Sieve. Perforated

Code: [79-3510](#)

Product Group: [450mm Diameter BS Sieves](#)

Further Information

****NOT AVAILABLE FOR SALE IN THE USA****



450mm Dia BS Sieve 10 mm Stainless Steel Sieve. Perforated

Code: [79-3555](#)

Product Group: [450mm Diameter BS Sieves](#)

Further Information

****NOT AVAILABLE FOR SALE IN THE USA****



450mm Dia BS Sieve 12.5 mm Stainless Steel Sieve. Perforated

Code: [79-3565](#)

Product Group: [450mm Diameter BS Sieves](#)

Further Information

****NOT AVAILABLE FOR SALE IN THE USA****



450mm Dia BS Sieve 20 mm Stainless Steel Sieve. Perforated

Code: [79-3595](#)

Product Group: [450mm Diameter BS Sieves](#)

Further Information

****NOT AVAILABLE FOR SALE IN THE USA****



450mm Dia BS Sieve 40 mm Stainless Steel Sieve. Perforated

Code: [79-3645](#)

Product Group: [450mm Diameter BS Sieves](#)

Further Information

****NOT AVAILABLE FOR SALE IN THE USA****



450mm Dia BS Sieve 50 mm Stainless Steel Sieve. Perforated

Code: [79-3655](#)

Product Group: [450mm Diameter BS Sieves](#)

Further Information

****NOT AVAILABLE FOR SALE IN THE USA****



450mm Dia BS Sieve 63 mm Stainless Steel Sieve. Perforated

Code: [79-3670](#)

Product Group: [450mm Diameter BS Sieves](#)

Further Information

****NOT AVAILABLE FOR SALE IN THE USA****



450mm Dia BS Sieve 8 mm Stainless Steel Sieve. Perforated

Code: [79-3540](#)

Product Group: [450mm Diameter BS Sieves](#)

Further Information

****NOT AVAILABLE FOR SALE IN THE USA****



225 Litre Drying Oven

Code: 78-1250/01

Product Group: Percentage Refusal Density (PRD),
Oven Drying Method, Oven Drying Method, Oven
Drying Method

Standards

EN 12697-32, EN 13280-4, BS 598-104, BS 1377

Specification

Capacity	225 litres
External Dimensions (l x w x h)	540 x 1040 x 940
Internal Dimensions (l x w x h)	440 x 920 x 600
Fluctuation	± 0.75°C
Rated power heater elements	2000 W
Shelves supplied	3
Shelf positions	4
Weight	80 kg

Alternatives



100 Litre Drying Oven

Code: 78-1225/01



150 Litre Drying Oven

Code: 78-1235/01



50 Litre Drying Oven

Code: 78-1215/01



Drying Oven 425 Litre Capacity

Code: [78-0135/01](#)