



IF IT'S WORTH BUILDING, IT'S WORTH TESTING

This wishlist was generated on 05/11/2018, and contains the following Products:

77-1040/11

Pressure Maintainer for Rock Shear Box Apparatus

77-1040/10

Mould Former for Rock Shear Box Apparatus

77-1040

Rock Shear Box Apparatus

70-5000

Hand Operated Pressure System. Complete with Pressure Gauge and Flexible Hose.

70-2630/01

ELE-Hoek Cell ADR Touch 2000 Compression Machine. 220 - 240 V 50/60H z

70-1712

Spare Jacket Nx Size.

70-0095/01

Rock Core Drill Supplied with 2 X Nx Core Drill Bit

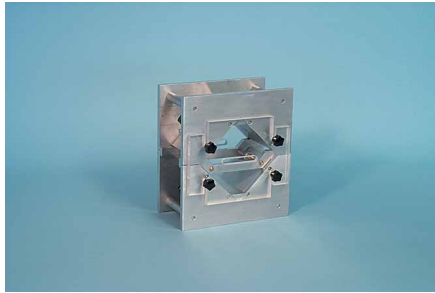


Pressure Maintainer for Rock Shear Box Apparatus

Code: [77-1040/11](#)

Product Group: [Rock Shear Apparatus](#)

Complete with pump, to absorb volume changes of the specimen and to allow a constant load to be maintained during the test.



Mould Former for Rock Shear Box Apparatus

Code: [77-1040/10](#)

Product Group: [Rock Shear Apparatus](#)

Used to prepare the specimen in the dimensions and geometry as requested by the shear box.



Rock Shear Box Apparatus

Code: [77-1040](#)

Product Group: [Rock Shear Apparatus](#)

Used to determine the strength and slope stability of rock size max 115x125 mm or cores max. dia. 102 mm, both in the field and in the laboratory.

Complete with two horizontal rams for shear in two directions, vertical loading ram, two bourdon tube load gauges dia. 150 mm with quick release couplings, calibrated 50 kN x 1 kN division, two hand pumps with hydraulic connections and dial gauge 25x0.01 mm.

Specification

Dimensions	600 x 250 x 460 mm
Weight	46 kg

Accessories



Mould Former for Rock Shear Box Apparatus

Code: [77-1040/10](#)



Pressure Maintainer for Rock Shear Box Apparatus

Code: [77-1040/11](#)



Hand Operated Pressure System. Complete with Pressure Gauge and Flexible Hose.

Code: [70-5000](#)

Product Group: [Hydraulic Constant Pressure Systems](#)

Specification

Pump	Single piston
Maximum pressure	70 mPa
Gauge	250 mm diameter scale marked 0-70 MN/m ²
Weight	14.8 kg

Accessories



Nylon Tubing 6mm Od 3500Kpa.

Code: [26-1926](#)



Specimen Extruder Bench Mounting Frame for Extruding Specimens From Hoek Cells

Code: [70-2725](#)



Standard Distance Piece - 20 mm Depth

Code: [37-4980](#)



Support Assembly

Code: [81-0094](#)

Spares/Consumables



Spare Jacket Nx Size.

Code: [70-1712](#)

Alternatives



ELE-Hoek Cell ADR Touch 2000 Compression Machine. 220 - 240 V 50/60H z

Code: [70-2630/01](#)



ELE-Hoek Cell Nx 54.74mm Diameter.

Code: [70-1710](#)



Pair of Permeability End Caps Nx. Supplied with Distance Block.

Code: [70-1750](#)



Pressure Test 3500 Oil/Water Constant Pressure System with Digital Pressure Gauge.

Code: [70-5130/01](#)



ELE-Hoek Cell ADR Touch 2000 Compression Machine. 220 - 240 V 50/60H Z

Code: [70-2630/01](#)

Product Group: [Triaxial Testing](#)

- High stability load frame
- Calibration accuracy satisfies BS EN ISO 7500-1, ASTM E4

This machine incorporates the ADR Touch Microprocessor System. The ADR is designed to minimise data entry during normal testing procedures. These machines are specially adapted for use with ELE Hoek Triaxial Cells and feature fixed upper and lower platens with locations to centralise the triaxial cell assembly for maximum stability.

Standards

BS EN ISO 7500-1, ASTM E4

Further Information

Supplied complete with digital readout, power pack, special upper and lower platens and gates. For 220 - 240 V AC, 50 - 60 Hz, 1 ph.

Specification

Dimensions (l x w x h)	520 x 700 x 1300 mm
Capacity	2000 kN
Ram travel	50 mm
Display	ADR Digital Readout
Platen diameter	178 mm
Accuracy	Better than $\pm 1\%$ over upper 90% of working range
Rated power	1350 W
Weight	600 kg

Accessories



Nylon Tubing 6mm Od 3500Kpa.

Code: [26-1926](#)



Specimen Extruder Bench Mounting Frame for Extruding Specimens From Hoek Cells

Code: [70-2725](#)



Standard Distance Piece - 20 mm Depth

Code: [37-4980](#)



Support Assembly

Code: [81-0094](#)

Spares/Consumables



Spare Jacket Nx Size.

Code: [70-1712](#)

Alternatives



ELE-Hoek Cell Nx 54.74mm Diameter.

Code: [70-1710](#)



Hand Operated Pressure System. Complete with Pressure Gauge and Flexible Hose.

Code: [70-5000](#)



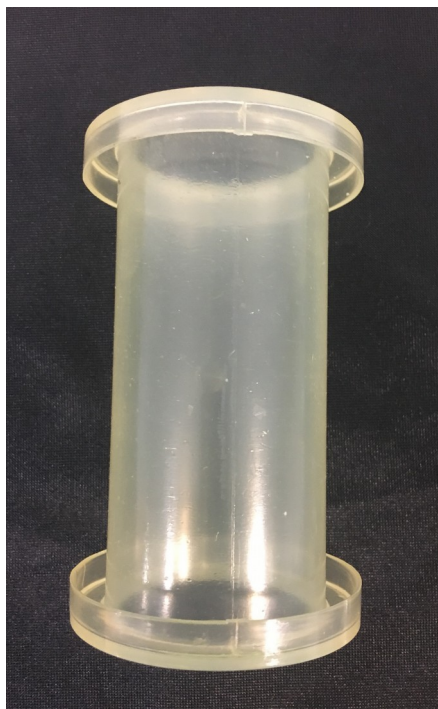
Pair of Permeability End Caps Nx. Supplied with Distance Block.

Code: [70-1750](#)



Pressure Test 3500 Oil/Water Constant Pressure System with Digital Pressure Gauge.

Code: [70-5130/01](#)



Spare Jacket Nx Size.

Code: [70-1712](#)

Product Group: [Hoek Cells](#)

55 mm jacket



Rock Core Drill Supplied with 2 X Nx Core Drill Bit

Code: [70-0095/01](#)

Product Group: [Sample Preparation](#)

Cores may be cut from regular or irregular samples of rock or other material for end preparation prior to strength testing. Side guards and a drain tray provide protection against water spray and a sliding front allows access to the specimen clamp. The clamp provides maximum orientation for securing irregular block samples.

Further Information

Supplied complete with 2 x NX Core Barrel. For 220-240 V AC, 50/60 Hz, 1ph.

Specification

Dimensions (l x w x h)	500 x 500 x 1160 mm
Drill Head Travel	630 mm
Drill Speeds	350 and 900 rpm
Weight	80 kg

Accessories



HQ size Core Drill Bit for 70-0095/01 Rock Core Drill

Code: [70-0095/10](#)