



IF IT'S WORTH BUILDING, IT'S WORTH TESTING

# Contents

[www.ele.com](http://www.ele.com)  
+44 (0) 01525 249 200



This wishlist was generated on 08/02/2019, and contains the following Products:

---

34-6250/01

**Vibrating Table 600 X 400mm Table Top. 220-240V 50Hz 1Ph. Supplied with clamping assembly**

---



## Vibrating Table 600 X 400mm Table Top. 220-240V 50Hz 1Ph. Supplied with clamping assembly

Code: [34-6250/01](#)

Product Group: [Vibrating Table](#)

Vibrating table mounted on a steel stand, supplied with clamp assembly.

## Standards

EN 12390-2, EN 12350-6, EN 12350-7

## Further Information

**\*\*NOT AVAILABLE FOR SALE IN THE USA\*\***

3000 cycles per minute. For 220 - 240 V AC, 50 Hz, 1 ph.

## Specification

Dimensions (table top)	600 x 400 mm
Maximum no. Cube moulds	2 x 150 mm <sup>2</sup>
Clamp Assembly	Single
Weight	60 kg

## Accessories



## Compacting Bar 25mm Sq X 380mm

Code: [34-2910](#)

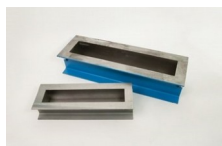


## Wire Brush

Code: 81-0705

---

## Alternatives



### 100 X 100 X 500mm Beam Mould.

Code: 34-5003



### 100mm Cube Mould 2-Part Clamp Type. Cast Iron Construction. BS EN Compliant.

Code: 34-4650



### 100mm Cube Mould 4-Part Clamp Type. Cast Iron Construction. BS EN Compliant.

Code: 34-4520



### 100mm Dia Cylinder Mould 200mm Long.

Code: 34-5210



## 150 X 150 X 750mm Beam Mould.

Code: 34-5053



## 150mm Cube Mould 2-Part Clamp Type. Cast Iron Construction. BS EN Compliant.

Code: 34-4670



## 150mm Cube Mould 4-Part Clamp Type. Cast Iron Construction. BS EN Compliant.

Code: 34-4570



## 150mm Dia Cylinder Mould 150mm Long.

Code: 34-5230



## 150mm Dia Cylinder Mould 300mm Long.

Code: 34-5260



**200mm Cube Mould Clamp Type. Cast Iron Construction.  
Stamped Mould Sections. EN Compliant.**

Code: [34-4620](#)