



IF IT'S WORTH BUILDING, IT'S WORTH TESTING

This wishlist was generated on 05/03/2019, and contains the following Products:

23-4250

Cbr/Core Cutter Extruder Frame and Hydraulic Jack Extrudes 150mm/6 Inch Diameter Specimens.

23-4300

Adaptor Plate for 23-4250 to Extrude 100mm/4 Inch Diameter and Marshall Specimens.

24-4125/01

High Speed Stirrer Complete with Paddle Cup & Baffle. 220-240V 50/60Hz 1Ph.

24-4145

Sodium Hexametaphosphate 500G.

24-4640

Soil Hydrometer Type 152H ASTM/Aashto Graduated -5 to + 60G/Litre.

24-4700

Hydrometer Sedimentation Cylinder

24-4865/01

Constant Temperature Bath 5 to 99.9 Deg.C X 0.1 Deg.C with Led Display and False Base Support.

24-9002

Standard Compaction Rammer 2.5kg BS1377

24-9004

BS Compaction Rammer 4.5Kg Wt.

24-9198

BS Cbr Mould Body.

24-9200

BS Extension Collar

24-9204

BS Solid Base or Top Plate

25-0402

Consolidation Frame One Dimensional Consolidation Incremental Loading Device.

25-0408

Set of Weights 100Kg Total Weight.

25-0440

Dial Gauge 10mm Travel X 0.002mm Divisions.

25-0455

Consolidation Cell Complete 50mm Diameter Sample.

25-0455/13

50mm Dia Upper and Lower Porous Stones for Use on EL25-0455 Series Cell.

25-0458

Cutting Ring 50mm Cell.

25-0461

Calibration Disc 50mm Cell

25-0580

Constant Head Permeability Cell 75mm Diameter Specimen.

25-0591

Manometer Tubes & Stand.

25-0593

Constant Level Tank.

25-0605

Falling Head Permeability Cell.

26-2181/10

Porous Plate 60mm Sq.

27-1300/01

DSU Electronic Readout and Control System 220 - 240 V AC 50/60 Hz

27-1649

Consolidation Transducer Assembly 15mm Travel Fitted with 5 Pin Din Plug.

27-1773

DS7.2 One-Dimensional Consolidation Program for Windows 7, 32/64 bit

34-8500

Drying Shrinkage & Moisture Movement Apparatus Complete with Two Calibration Rods

78-1250/01

225 Litre Drying Oven

82-0200

Beaker - 600 ml



Cbr/Core Cutter Extruder Frame and Hydraulic Jack Extrudes 150mm/6 Inch Diameter Specimens.

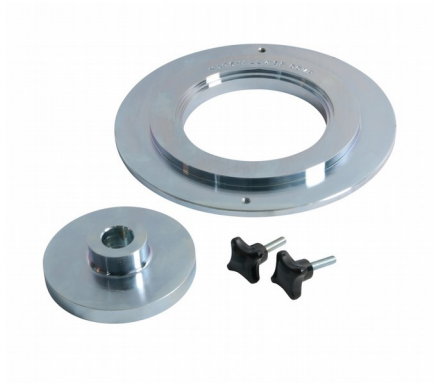
Code: [23-4250](#)

Product Group: [Soil Extruders](#)

Comprises a frame and hydraulic jack with adaptor plate supplied. Extrudes samples from BS CBR Mould and ASTM CBR Mould.

Standards

BS 1377-1



Adaptor Plate for 23-4250 to Extrude 100mm/4 Inch Diameter and Marshall Specimens.

Code: [23-4300](#)

Product Group: [Soil Extruders](#)

For use with 23-4250. Comprising an adaptor plate, retaining screws and a nominal 100 mm ram plunger. Enables extrusion from all ELE 100 mm moulds and core cutters listed in the table.

Standards

BS 1377-1

Further Information

Two extruders comprising a frame and hydraulic jack supplied with adaptor plates to enable a range of sample extrusion from all ELE moulds indicated in the table.



High Speed Stirrer Complete with Paddle Cup & Baffle. 220-240V 50/60Hz 1Ph.

Code: [24-4125/01](#)

Product Group: [Mechanical Analysis Stirrer](#)

Compact bench top stirrer used for dispersing soil samples in water. Supplied complete with mixing paddle and dispersion cup with baffle. Beaker position maintained by column retainer.

Standards

BS 1377, ASTM D422, AASHTO T88



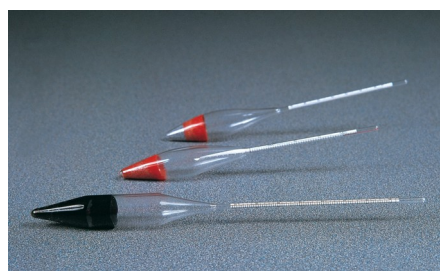
Sodium Hexametaphosphate 500G.

Code: [24-4145](#)

Product Group: [Sodium Hexametaphosphate,](#)
[Mechanical Analysis Stirrer](#)

Standards

ASTM D422, AASHTO T88, ASTM E100



Soil Hydrometer Type 152H ASTM/Aashto Graduated -5 to + 60G/Litre.

Code: [24-4640](#)

Product Group: [ASTM Soil Hydrometers, Soil Hydrometers](#)

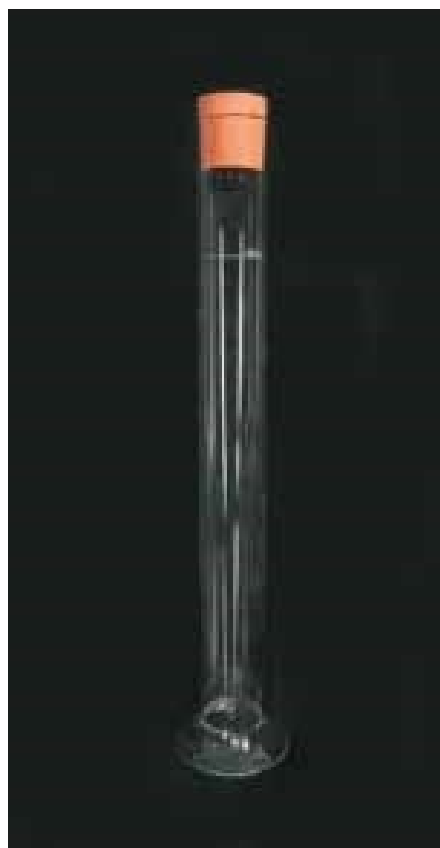
Graduated -5 to +60 g/litre.

Standards

BS 1377, EN 1997-2, ASTM D422, ASTM E100, AASHTO T88

Specification

Construction	Molded, seamless.
Scale	Bouyoucos; double scale.
Calibration	At 68°F.
Weight	Net 4 oz. (113 g).



Hydrometer Sedimentation Cylinder

Code: [24-4700](#)

Product Group: [Hydrometer Sedimentation Cylinder](#),
[Hydrometer Jar](#)

Glass, 1000 ml capacity complete with rubber bung.

Standards

BS 1337, ASTM D422, AASHTO T88

Further Information

1000ML Glass



Constant Temperature Bath 5 to 99.9 Deg.C X 0.1 Deg.C with Led Display and False Base Support.

Code: [24-4865/01](#)

Product Group: [Constant Temperature Bath](#)

This compact, bench-top stirrer is used for dispersing soil samples in water for hydrometer analysis. The stirrer is supplied complete with Mixing Paddle and Dispersion Cup. Weight 4 kg.

Further Information

Specially designed for the sedimentation testing of soils and other fine grained material, the bath is supplied with a false bottom to assist in circulation of the bath liquid. Will accommodate six Sedimentation Cylinders.

Specification

Dimensions (l x w x h)	535 x 210 x 610 mm external
Capacity	Holds up to 6 sedimentation cylinders
Construction	Stainless steel with toughened glass front
Temperature Control	Heater/thermostat/circulation with digital controller unit 5 to 99.9 Deg.C X 0.1 Deg.C
Power	1500 watts
Weight kg	12



Standard Compaction Rammer 2.5kg BS1377

Code: [24-9002](#)

Product Group: [BS/EN compaction test 2.5kg](#)

50mm diameter with 300mm drop, manufactured from corrosion protected steel.

Standards

BS 1377-4, BS 1924-2

Specification

Rammer	50 mm dia, 2.5 kg
Drop	300 mm
Guide Sleeve	Machined steel tubing with air pressure release holes
Finish	Corrosion resistant
Weight kg	4.2



BS Compaction Rammer 4.5Kg Wt.

Code: [24-9004](#)

Product Group: [BS/EN compaction test 4.5kg, Straightedge](#)

50mm diameter with 450mm drop, manufactured from corrosion protected steel.

Standards

BS 1377-4, BS 1924-2

Specification

Rammer	50 mm dia, 4.5 kg
Drop	450 mm
Guide Sleeve	Machined steel tubing with air pressure release holes
Finish	Corrosion resistant
Weight kg	7.5



BS Cbr Mould Body.

Code: 24-9198

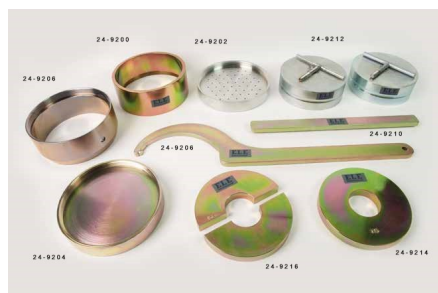
Product Group: BS EN CBR mould, Accessories for
BS compaction and CBR

Standards

ASTM D1883, AASHTO T193

Specification

Mould	152 x 127 mm (inside diameter x height)
Collar	51 mm height, fits both ends of mould
Base plate	Solid, fits both ends of mould
Construction	All steel, plated
Weight kg	7.3



BS Extension Collar

Code: [24-9200](#)

Product Group: [BS EN CBR mould accessories](#),
[Accessories for BS compaction and CBR](#)

Standards

EN 13286-4, BS 1377-4, BS 1924-2



BS Solid Base or Top Plate

Code: [24-9204](#)

Product Group: [BS EN CBR mould accessories](#),
[Accessories for BS compaction and CBR](#)

Standards

EN 13286-4, BS 1377-4, BS 1924-2



Consolidation Frame One Dimensional Consolidation Incremental Loading Device.

Code: 25-0402

Product Group: Consolidation Apparatus, Table Top Consolidation Apparatus

- High capacity - 8800 kPa on 50 mm diameter specimens using 11:1 beam ratio
- Triple beam ratio, 9:1, 10:1, 11:1
- Compact unit ensures maximum space saving

The ELE Oedometer is rigidly constructed to ensure minimum frame distortion. The frame is designed to load the specimen through a yoke assembly and one of three alternative beam ratios. The beam is fitted with a counterbalance weight and beam support jack. The cell platform will accept the complete range of ELE consolidation cells and is fitted with a central spigot to ensure accurate centring of the cell under the loading yoke. Dimensions without hanger 711 x 203 x 508 mm (l x w x h). Weight 24 kg.

Standards

ASTM D2435, ASTM D4546, AASHTO T216, ASTM D3877, BS 1377-5

Further Information

Supplied without dial gauge and weights.

Specification

Load Capacity	48 tons/sq. ft. (5,14 8 kPa) on 2.5" (63 mm) diam. samples.
Loading Beam	Cast aluminum; counterbalanced; 9:1,10:1 and 11 :1 ratios.
Frame	Cast aluminum; integral beam support jack; plated steel and platform.
Dimensions	203 x 711 x 508 mm, (8" w. x 28" d. x 20" h) . excluding weight hanger.
Weight	24 KG



Set of Weights 100Kg Total Weight.

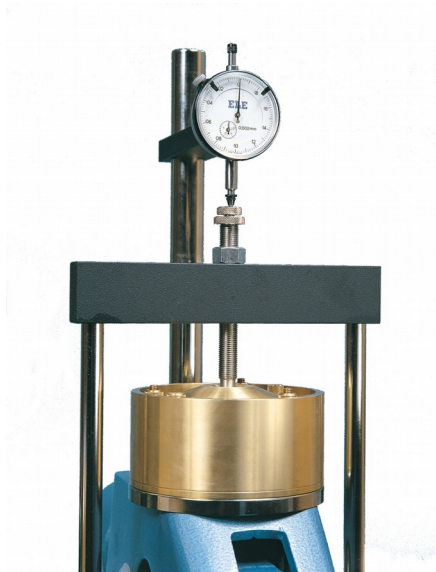
Code: [25-0408](#)

Product Group: [Consolidation Apparatus](#)

9 x 10 kg, 1 x 5 kg, 2 x 2 kg, 1 x 1 kg.

Standards

ASTM D2435, ASTM D4546, AASHTO T216, ASTM D3877, BS 1377-5



Dial Gauge 10mm Travel X 0.002mm Divisions.

Code: [25-0440](#)

Product Group: [Measurement of Horizontal and Vertical Movement](#), [Vertical settlement measurement](#), [Direct/Residual Shear Apparatus](#)



Consolidation Cell Complete 50mm Diameter Sample.

Code: 25-0455

Product Group: Table Top Consolidation Apparatus, Pneumatic Consolidation Apparatus, Fixed Ring Consolidation, High pressure application consolidation cells and accessories

- 50 mm dia samples
- Integral water reservoir
- Supplied with upper and lower porous disc and cutting ring
- Manufactured from corrosion resistant materials
- Maximum working stress 8 mpa

Specification

Application	High pressure
Specimen Dia	50 mm
Specimen area	1963 mm ²
Beam ratio	10:1
Load kg	1
Stress	50 kPa
Typical max stress	8 MPa
Stress for 1 kg m ²	50 kPa
Application	High Pressure
Specimen Diameter	50 mm
Specimen Area	1963 mm ²
Beam Ratio	10:01
Load	1 kg
Stress	50 kPa
Typical Maximum Stress	8 MPa
Stress for 1 kg	50 kPa



50mm Dia Upper and Lower Porous Stones for Use on EL25-0455 Series Cell.

Code: [25-0455/13](#)

Product Group: [Fixed Ring Consolidation](#), [High pressure application consolidation cells](#) and [accessories](#)



Cutting Ring 50mm Cell.

Code: [25-0458](#)

Product Group: [High pressure application consolidation cells and accessories](#), [Fixed Ring Consolidation](#)



Calibration Disc 50mm Cell

Code: [25-0461](#)

Product Group: [Fixed Ring Consolidation](#), [High pressure application consolidation cells and accessories](#)



Constant Head Permeability Cell 75mm Diameter Specimen.

Code: [25-0580](#)

Product Group: [Constant Head Apparatus](#)

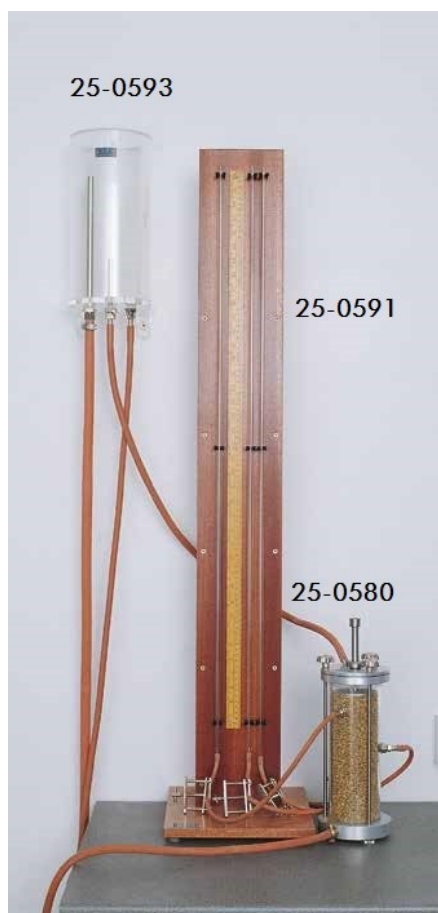
75 mm Diameter

Standards

BS 1377-5

Specification

Nominal Cell inside diameter	75 mm
Cell wall	Transparent plastic
Take-off points	3
End plates	Anodised aluminium
Weight kg	2.6



Manometer Tubes & Stand.

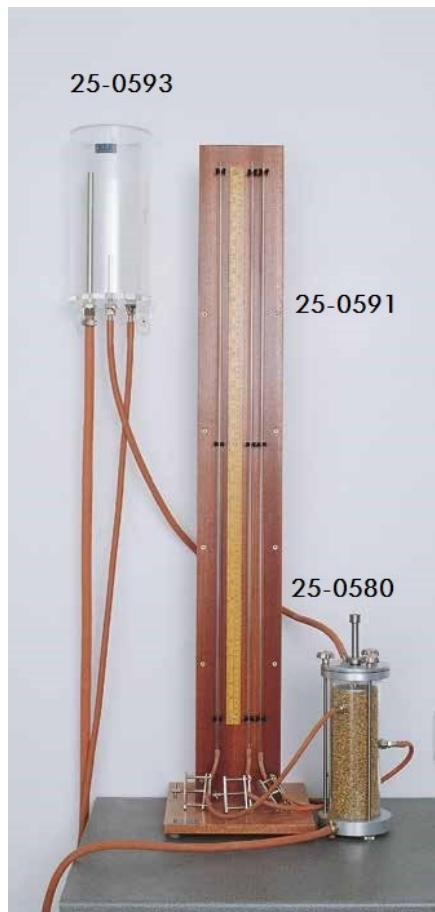
Code: [25-0591](#)

Product Group: [Constant Head Apparatus](#)

Comprising three glass tubes of constant bore, metre scale and connecting tubing for cell pressure take-off points, all mounted on a free-standing panel. Comprising three glass tubes of constant bore, metre scale and connecting tubing for cell pressure take-off points, all mounted on a free-standing panel.

Standards

BS 1377-5



Constant Level Tank.

Code: [25-0593](#)

Product Group: [Constant Head Apparatus](#)

Manufactured from transparent plastic with attachment for wall mounting. The inlet, outlet and overflow pipes are fitted to the base of the tank and can be adjusted for height within the tank. Supplied complete with connecting tubing.

Standards

BS 1377-5



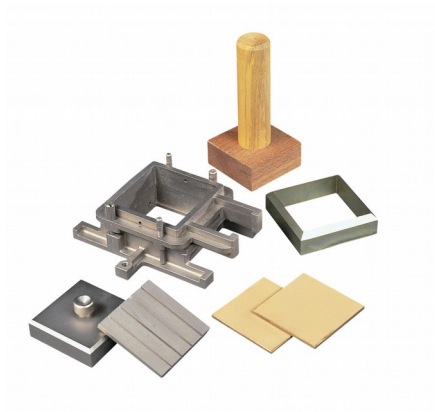
Falling Head Permeability Cell.

Code: [25-0605](#)

Product Group: [Falling Head Apparatus](#)

Specification

Cell	Plated seamless tube 100 mm diameter x 130 mm height
Base	Porous plate with three tie rods
Top plate	Machined to accept smaller tubes
Weight kg	3.4



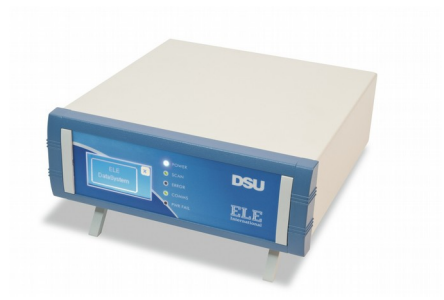
Porous Plate 60mm Sq.

Code: [26-2181/10](#)

Product Group: [Shearbox Assemblies- Accessories and Spares](#), [Shearbox Assemblies- Accessories and Spares](#)

Standards

ASTM D3080, AASHTO T236



DSU Electronic Readout and Control System 220 - 240 V AC 50/60 Hz

Code: [27-1300/01](#)

Product Group: [Data Logging with the DSU](#), [Electronic Instrumentation](#), [Electronic Instrumentation](#), [Automatic Data Acquisition - CBR](#), [Data Logging with the DSU](#)

· Download the full brochure here
[[/Page/catalogue-download/NTRmZS9UaGUgTkVXIERTVSBVU0EucGRm](#)]

- 4 channel automatic control and data-logging unit
- Automatic, dual-frame control
- Performs CBR, Marshall, Unconfined Compression, Direct and Residual Shear, One-Dimensional Consolidation and Unconsolidated Undrained tests
- LAN connection - software can be running anywhere on your server
- Never lose data from power fails - 2 gigabytes of non-volatile memory
- Extended warranty

The Data System Unit (DSU) is a versatile instrument designed to accommodate the general logging requirements of geotechnical and materials testing engineers. Its intelligent interface allows the user to work with a range of different sensors.

Further Information

The DSU has two distinct modes of operation. The first is referred to as DS mode (DataSystem) for operation with ELE International's established DS7 geotechnical testing software.

DS MODE

- Up to four one dimensional consolidation tests
- Up to two CBR tests
- One direct/residual shear test
- One triaxial quick un-drained test

DU MODE

- Up to two Marshall tests
- Up to two CBR tests
- Up to two Unconfined compression tests
- Automatic frame control

OVERVIEW

- Touch Screen data entry for standalone operation, Marshall/CBR/Quick un-drained
- Automatic single and dual frame control (with multiplex 50 frame)
- Log memory of 2 gigabytes
- Non-volatile memory
- Ethernet TCP/IP link and serial comms support
- Market leading signal stability
- Certificate and manual calibration features

Become a member of the ELE International web site, add this new product to a wishlist to receive a quote! Click here [\[Login\]](#)

This product is now available in the USA and Canada!



Consolidation Transducer Assembly 15mm Travel Fitted with 5 Pin Din Plug.

Code: [27-1649](#)

Product Group: [Displacement Measurement](#),
[Displacement Transducers](#), [Vertical settlement measurement](#)

Fitted with 5 pin DIN plug.

Supplied with Calibration Certificate.

Specification

Construction

Fully encapsulated electronics,
sealed in a stainless steel case

Excitation

11 V DC

Connector

5-pin DIN type

Mounting bracket

Included as standard

Weight kg

0.45

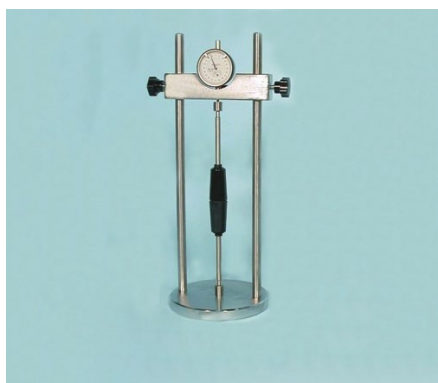


DS7.2 One-Dimensional Consolidation Program for Windows 7, 32/64 bit

Code: [27-1773](#)

Product Group: [DS7.2 One-Dimensional Consolidation Software](#), [DS7.2 for Windows 7](#), [DS7.2](#)

DS7.2 Consolidation Software provides all basic functions needed to record and analyse consolidation test data. Options are available for monitoring settlement on a log time or square-root time basis. Printouts and graphical plots are available for all stages including Mv and Cv moisture content, voids ratio plots, and initial sample conditions.



Drying Shrinkage & Moisture Movement Apparatus Complete with Two Calibration Rods

Code: [34-8500](#)

Product Group: [Measuring Equipment](#)

Conforming to the requirements of EN 1367-4 and ASTM C490 comprising a steel frame with an adjustable-height beam and a dial gauge with 0.002 mm divisions. Supplied with two calibration rods EN and ASTM.

Standards

ASTM C348, ASTM C490, EN 12617-4, EN 12808-4, EN 1367-4, BS 6073-1

Further Information

****NOT AVAILABLE FOR SALE IN THE USA****



225 Litre Drying Oven

Code: 78-1250/01

Product Group: Percentage Refusal Density (PRD),
Oven Drying Method, Oven Drying Method, Oven
Drying Method

Standards

EN 12697-32, EN 13280-4, BS 598-104, BS 1377

Specification

Capacity	225 litres
External Dimensions (l x w x h)	540 x 1040 x 940
Internal Dimensions (l x w x h)	440 x 920 x 600
Fluctuation	$\pm 0.75^{\circ}\text{C}$
Rated power heater elements	2000 W
Shelves supplied	3
Shelf positions	4
Weight	80 kg



Beaker - 600 ml

Code: [82-0200](#)

Product Group: [Beakers and Covers](#)

Borosilicate glass, squat form.

Further Information

****NOT AVAILABLE FOR SALE IN THE USA****