



IF IT'S WORTH BUILDING, IT'S WORTH TESTING

This wishlist was generated on 05/03/2019, and contains the following Products:

24-4934

Glycerol Analar 2.5 Litre

24-4945/01

Motorised Sand Equivalent Shaker ASTM. 220-240VK 50Hz 1Ph.

24-9182

Penetration Piston

24-9188

Bracket and Adaptor. Dual Purpose Mounting Bracket for CBR Penetration Gauges EL24-9184/EL24-9186

24-9198

BS Cbr Mould Body.

24-9214

2Kg Annular Surcharge Weight

24-9216

2Kg Split Surcharge Weight.

25-3700/01

MultiPlex 50 Load Frame

25-7655

100 mm Two-Part Split Mould

27-1300/01

DSU Electronic Readout and Control System 220 - 240 V AC 50/60 Hz

27-1559

50kN S-type Load Cell

27-1705

CBR Penetration Transducer 50mm Travel Fitted with 5 Pin Din Plug.

34-0110

Slump Cone

34-0130

Tamping Rod 16mm Dia X 600mm long hemispherical at both ends.

34-0140

300 mm Stainless Steel Rule.

34-0160

Base Plate for Slump Test.

34-0180

Slump Cone Funnel

34-0192

Slump Test Set BS & ASTM. C/W Slump Cone Base Plate Steel Rule Tamping Rod & Funnel.

39-1000

Briquette Mould

39-6220

Set of Distance Pieces

39-7160/01

ADR Touch Control PRO 250/25 Auto Cement Machine

42-0410

Flakiness Gauge.

42-0600

Set of Flakiness Sieves Comprising 1 Ea 4.9mm 7.2mm 10.2mm 14.4mm 19.7mm 26.3mm and 33.9mm

42-0820

Length Gauge

42-2958

Sulphate Test Strips

47-6175

Compact Core Drill

47-6175/10

Coring Bit for Core Drilling Machine 50 mm dia. x 400 mm length

47-6175/11

Coring Bit for Core Drilling Machine 75 mm dia. x 400 mm length

47-6175/12

Coring Bit for Core Drilling Machine 100 mm dia. x 400 mm length

47-6175/13

Coring Bit for Core Drilling Machine 150 mm dia. x 400 mm length



Glycerol Analar 2.5 Litre

Code: [24-4934](#)

Product Group: [Sand Equivalent Value](#), [Sand Equivalent Value](#)

2.5 litres

Standards

ASTM D2419, AASHTO T176

Further Information

****NOT AVAILABLE FOR SALE IN THE USA****



Motorised Sand Equivalent Shaker ASTM. 220-240VK 50Hz 1Ph.

Code: [24-4945/01](#)

Product Group: [Sand Equivalent Value](#), [Sand Equivalent Value](#)

Bench mounting mechanical sand equivalent shaker with a stroke of 203mm (8 inches) and a running frequency of 175 cycles per minute. The integral timer stops shaker upon test completion. For use on 220-240v 50Hz 1ph.

Further Information

****NOT AVAILABLE FOR SALE IN THE USA****

Recommended for use in laboratories performing a large number of tests, motorised shakers provide a consistent and repeatable oscillation, minimising variation in test results.



Penetration Piston

Code: [24-9182](#)

Product Group: [Penetration Measurement](#)

1.935 mm² (3 in²) area foot of case hardened steel.
Designed to fit all ELE load rings.



Bracket and Adaptor. Dual Purpose Mounting Bracket for CBR Penetration Gauges EL24-9184/EL24-9186

Code: [24-9188](#)

Product Group: [In-situ CBR](#), [Conversion of In-situ to Laboratory CBR](#), [Penetration Measurement](#)

Dual purpose mounting bracket for CBR penetration dial gauges. Allows gauge to be fixed to penetration piston or load ring.

Standards

BS 1377, BS 1924



BS Cbr Mould Body.

Code: 24-9198

Product Group: BS EN CBR mould, Accessories for
BS compaction and CBR

Standards

ASTM D1883, AASHTO T193

Specification

Mould	152 x 127 mm (inside diameter x height)
Collar	51 mm height, fits both ends of mould
Base plate	Solid, fits both ends of mould
Construction	All steel, plated
Weight kg	7.3



2Kg Annular Surcharge Weight

Code: [24-9214](#)

Product Group: [BS EN CBR mould accessories](#)

Standards

EN 13286-4, BS 1377-4, BS 1924-2



2Kg Split Surcharge Weight.

Code: [24-9216](#)

Product Group: [BS EN CBR mould accessories](#)

Standards

EN 13286-4, BS 1377-4, BS 1924-2



MultiPlex 50 Load Frame

Code: 25-3700/01

Product Group: [Data Logging with the DSU](#), [CBR Load Frames](#), [Marshall Load Frames](#), [Triaxial Load Frames](#), [Data Logging with the DSU](#)

Compact bench mounting load frame designed for performing laboratory CBR, unconfined compression, Quick Undrained Triaxial and Marshall Stability Tests. Has a variable speed of 0.5 to 50.8mm per minute and features rapid approach of platen.

Standards

EN 12697-34, BS 598, BS 1377, BS 1924, ASTM D1883, EN 12697-23, EN 12697-24, EN 13286-47, AASHTO T193, ASTM D2850, ASTM D4767, AASHTO T296, AASHTO T297, ASTM D6927

Further Information

****NOT AVAILABLE FOR SALE IN THE USA****

Specification

Dimensions (l x w x h)	550 x 400 x 1470 mm
Max vertical clearance	800 mm
Horizontal clearance	265 mm
Platen diameter	133 mm
Platen travel	100 mm
Platen speed range	0.5 to 50.8 mm/min
Rapid approach speed	40 mm/min
Weight kg	100, (shipping 113 kg)



100 mm Two-Part Split Mould

Code: [25-7655](#)

Product Group: [Two-Part Split Mould](#)



DSU Electronic Readout and Control System 220 - 240 V AC 50/60 Hz

Code: [27-1300/01](#)

Product Group: [Data Logging with the DSU](#), [Electronic Instrumentation](#), [Electronic Instrumentation](#), [Automatic Data Acquisition - CBR](#), [Data Logging with the DSU](#)

· Download the full brochure here
[[/Page/catalogue-download/NTRmZS9UaGUgTkVXIERTVSBVU0EucGRm](#)]

- 4 channel automatic control and data-logging unit
- Automatic, dual-frame control
- Performs CBR, Marshall, Unconfined Compression, Direct and Residual Shear, One-Dimensional Consolidation and Unconsolidated Undrained tests
- LAN connection - software can be running anywhere on your server
- Never lose data from power fails - 2 gigabytes of non-volatile memory
- Extended warranty

The Data System Unit (DSU) is a versatile instrument designed to accommodate the general logging requirements of geotechnical and materials testing engineers. Its intelligent interface allows the user to work with a range of different sensors.

Further Information

The DSU has two distinct modes of operation. The first is referred to as DS mode (DataSystem) for operation with ELE International's established DS7 geotechnical testing software.

DS MODE

- Up to four one dimensional consolidation tests
- Up to two CBR tests
- One direct/residual shear test
- One triaxial quick un-drained test

DU MODE

- Up to two Marshall tests
- Up to two CBR tests
- Up to two Unconfined compression tests
- Automatic frame control

OVERVIEW

- Touch Screen data entry for standalone operation, Marshall/CBR/Quick un-drained
- Automatic single and dual frame control (with multiplex 50 frame)
- Log memory of 2 gigabytes
- Non-volatile memory
- Ethernet TCP/IP link and serial comms support
- Market leading signal stability
- Certificate and manual calibration features

Become a member of the ELE International web site, add this new product to a wishlist to receive a quote! Click here [\[Login\]](#)

This product is now available in the USA and Canada!



50kN S-type Load Cell

Code: [27-1559](#)

Product Group: [Load Measurement](#), [Electronic Instrumentation](#), [Force measurement](#), [Electronic Instrumentation](#)

Maximum working capacity of 50 kN and excitation 10 V ac/dc with an output of 2.7 mV/V nominal.

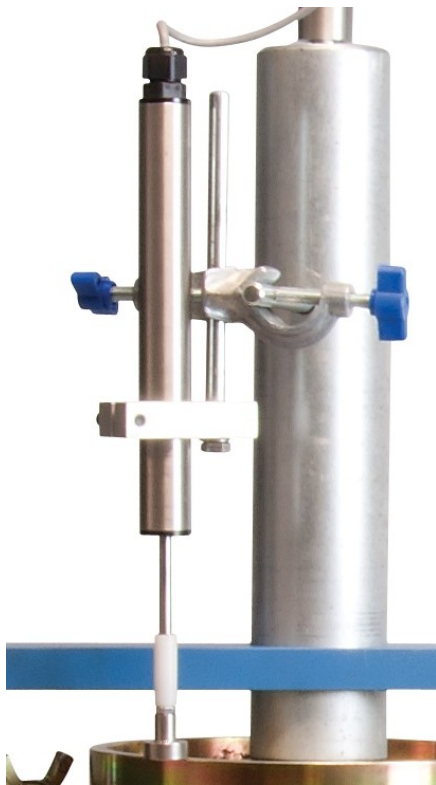
Aluminium alloy and stainless steel construction with IP65 environmental protection.

Standards

EN 12697-34

Further Information

****NOT AVAILABLE FOR SALE IN THE USA****



CBR Penetration Transducer 50mm Travel Fitted with 5 Pin Din Plug.

Code: [27-1705](#)

Product Group: [Penetration Measurement](#),
[Penetration Measurement](#)

- Ideally suited for use with GDU for accurate displacement measurements
- Models available for use in consolidation, shear, CBR and triaxial test applications
- Supplied complete with mounting hardware for specified products

Displacement Transducers are used in consolidation, shear, CBR and triaxial test applications for accurate displacement measurements. They are supplied complete with a 5-pin DIN type connector for direct connection to the GDU.

Specification

Construction	Fully encapsulated electronics, sealed in a stainless steel case
Excitation	14 V DC
Connector	5-pin DIN type
Mounting bracket	Included as standard
Weight kg	0.45



Slump Cone

Code: [34-0110](#)

Product Group: [Slump Test, Slump Cones](#)

Complies with EN 12350-2, ASTM C143 and AASHTO T119

Standards

ASTM C143/C143M, ASTM C192, AASHTO T119

Specification

Construction	Seamless, heavy-gauge spun steel; 0.45" (1.1 mm) min. Thickness.
Finish	Plated for rust and corrosion resistance.
Dimensions	100 mm top diam. X 200 mm bottom diam. (without foot pieces) x 300 mm h.
Weights	Net 5.5 lbs (2.5kg)



Tamping Rod 16mm Dia X 600mm long hemispherical at both ends.

Code: [34-0130](#)

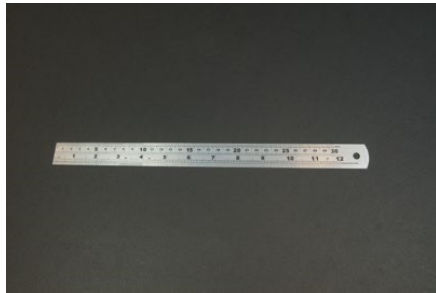
Product Group: [Precision Air Entrainment Meter, Slump Test, Accessories for Concrete Moulds](#)

Steel, 600 mm long x 16 mm dia, hemispherical at both ends.

Please note this item is not graduated.

Further Information

****NOT AVAILABLE FOR SALE IN THE USA****



300 mm Stainless Steel Rule.

Code: [34-0140](#)

Product Group: [Slump Test](#)

Standards

EN 12350-2

Further Information

****NOT AVAILABLE FOR SALE IN THE USA****



Base Plate for Slump Test.

Code: [34-0160](#)

Product Group: [Slump Test](#)

Further Information

****NOT AVAILABLE FOR SALE IN THE USA****



Slump Cone Funnel

Code: 34-0180

Product Group: Concrete Mixture Pre-Qualification,
Portable Slump Test Set, Slump Test, Slump Test Set,
Slump Cones

Standards

ASTM C143/C143M, ASTM C192, AASHTO T23, AASHTO T119, ASTM T126



Slump Test Set BS & ASTM. C/W Slump Cone Base Plate Steel Rule Tamping Rod & Funnel.

Code: [34-0192](#)

Product Group: [Slump Test](#)

BS and ASTM comprising of slump cone, base plate, steel rule, tamping rod and funnel.

Further Information

****NOT AVAILABLE FOR SALE IN THE USA****



Briquette Mould

Code: [39-1000](#)

Product Group: [Moulding of Mortar Briquettes](#)

Manufactured to the dimensions in the relevant specification. Two part construction, supplied complete with baseplate.

Standards

ASTM C307

Further Information

****NOT AVAILABLE FOR SALE IN THE USA****



Set of Distance Pieces

Code: [39-6220](#)

Product Group: [Cement Testing Accessories](#)

Accessory: for testing samples 40mm, 50mm, 70.7mm and 100mm. Note: These items are required when testing above sample sizes NOT using the compression jig.

Further Information

****NOT AVAILABLE FOR SALE IN THE USA****



ADR Touch Control PRO 250/25 Auto Cement Machine

Code: 39-7160/01

Product Group: Activity Index, ADR Touch Control Pro 250/25 Auto Cement Machines

- 250 kN maximum capacity
- Calibration accuracy to BS EN ISO 7500-1; ASTM E4
- Automatic loading cycle
- 25 kN low capacity frame supplied as standard
- Tests a wide variety of specimen sizes
- Tests mortar, lime, cement and Fly Ash
- Complete with compression/flexural jigs and platen sets
- Supplied with Windows(R) download software as standard

The ADR Touch Control PRO 250/25 Machine provides consistent automatic testing of a wide range of specimens. The machine comprises a standard ELE 250/25 kN load frame and the new ADR Touch Control PRO console and incorporates all the features included in the ADR Touch Control PRO series concrete testing machines.

As standard the machine is supplied with platens fitted to the load frame, compression jig with 40 mm and 50mm/2 inch square platen sets and flexural jig for testing 40.1 x 40 x 160 mm prisms.

The availability of the 25 kN low capacity load frame as standard extends the test capability of the machine for low strength compression or flexural testing.

Standards

EN 196-1, EN 459-2, EN 1744, EN 1015-11, EN 13454-2, BS 3892-1, BS 4551-1, ASTM C109, ISO 679

Further Information

****Not available for sale in the USA****

The ADR Touch Control PRO will deliver all the features and quality of the established ADR-Auto range, with its 20 year history, but with a new sleek design and additional capabilities. The console assembly consists of an ADR Touch Control PRO and power base which can be used with all existing concrete and cement frames

USER INTERFACE

The new ADR Touch Control PRO has an improved user interface providing a high quality platform

for testing that will enhance the performance of our compression machines. It now has a larger 7-inch colour touch screen with a higher definition display, allowing easier observation of test progress. A favourites option is also available, allowing users to save the most common set-ups for immediate access, without the need for navigating through selection menus.

USER FLEXIBILITY

The ADR Touch Control PRO has a unique flexible head with rotation capabilities of 75-degrees and a 45-degree tilt, improving usability and comfort for individual users. It is available with four languages English, Spanish, Portuguese and French, making it even more user-friendly and accessible to a wider audience. The new LAN connectivity feature lets the operator use the PC based APP (ELE Logger) to download test results away from the test area. User flexibility has also increased with the new ADR Touch Control Pro as it can now be operated remotely, so tests can be initiated away from the test area. Many issues can be resolved quickly by our service team through the new remote diagnostics feature and updating to the latest version of software has never been easier.

COMPATIBILITY

The all new dual sensor capabilities allow users to test both concrete and cement samples on one frame. The ADR Touch Control PRO is compatible with all existing compression frames and upgrade kits are also available. The upgrade kits can be used to convert existing ADR-Auto consoles to the new Automatic Digital Control Readout.

TESTING TIMES

The new generation ADR Compression Machines have an increased control over the pace rate, which allows users to run the pace rate higher than average, but still within standard. This produces an average time saving of 10% for a typical 150mm cube sample.

ELECTRICAL

Reduced component count and no wire design results in increased reliability and serviceability. New low voltage interlocks and e-stop has increased safety. The ADR Touch Control PRO has the latest Arm Core Processor technology which has improved the processing power and speed.



Flakiness Gauge.

Code: [42-0410](#)

Product Group: [Flakiness Sieves and Gauges](#)

Constructed of heavy gauge sheet steel to the dimensions specified in BS 812.

Standards

BS 812

Further Information

****NOT AVAILABLE FOR SALE IN THE USA****



Set of Flakiness Sieves Comprising 1 Ea 4.9mm 7.2mm 10.2mm 14.4mm 19.7mm 26.3mm and 33.9mm

Code: [42-0600](#)

Product Group: [Flakiness Sieves and Gauges](#)

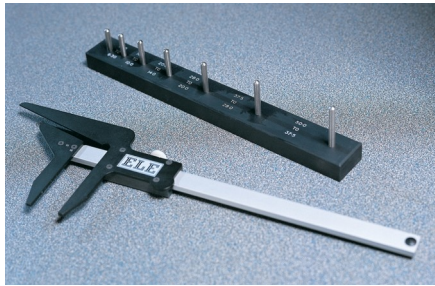
Comprising of 1 each, 4.9 mm, 7.2 mm, 10.2 mm,
14.4 mm, 19.7 mm, 26.3 mm and 33.9 mm.

Standards

BS 813

Further Information

****NOT AVAILABLE FOR SALE IN THE USA****



Length Gauge

Code: [42-0820](#)

Product Group: [Elongation Index](#)

Manufactured to the dimensions specified in BS 182.

Standards

BS 812-105

Further Information

****NOT AVAILABLE FOR SALE IN THE USA****



Sulphate Test Strips

Code: [42-2958](#)

Product Group: [Sulphate Content: Rapid Method](#)

Detection range 200 to 900 mg/l. Pack of 100.



Compact Core Drill

Code: 47-6175

Product Group: Compact Core Drill Machine

EN 12697-27

Machine is designed to cut cores up to 150 mm diameter from concrete, asphalt and similar hard construction materials. It comprises a vertical support column which carries the drill head/motor assembly. The motor assembly comprises a 6.5 Hp petrol engine, a ball screw mechanism enables close control of the drilling pressure and rapid return when drilling is completed. A water spraying assembly is mounted on the machine. The complete assembly is supplied on a rigid wheel mounted metal base frame with leveling and fixing facility during the operation.

Coring bits are available to order separately

Specification

Dimensions	500 x 900 x 1100 mm
Weight	95 kg
Power	6.5 Hp



Coring Bit for Core Drilling Machine 50 mm dia. x 400 mm length

Code: [47-6175/10](#)

Product Group: [Compact Core Drill Machine](#)



Coring Bit for Core Drilling Machine 75 mm dia. x 400 mm length

Code: [47-6175/11](#)

Product Group: [Compact Core Drill Machine](#)



Coring Bit for Core Drilling Machine 100 mm dia. x 400 mm length

Code: [47-6175/12](#)

Product Group: [Compact Core Drill Machine](#)



Coring Bit for Core Drilling Machine 150 mm dia. x 400 mm length

Code: [47-6175/13](#)

Product Group: [Compact Core Drill Machine](#)