



IF IT'S WORTH BUILDING, IT'S WORTH TESTING

# Contents

[www.ele.com](http://www.ele.com)  
+44 (0) 01525 249 200



This wishlist was generated on 28/03/2019, and contains the following Products:

---

38-2010/10

**Consistency Plunger**

---

38-2012

**Vicat Apparatus**

---

38-2300

**EN Vicat Mould**

---



## Consistency Plunger

Code: [38-2010/10](#)

Product Group: [Vicat Method](#)

Spare.

## Standards

EN 196-3, EN 13454-2, ASTM C187, ASTM C191

## Further Information

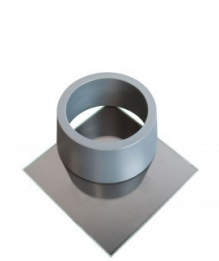
**\*\*NOT AVAILABLE FOR SALE IN THE USA\*\***

## Accessories

### ASTM Initial Set Needle

Code: [38-2620](#)





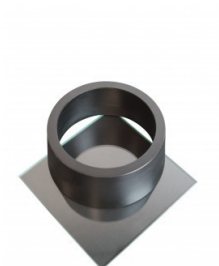
## ASTM Vicat Mould

Code: [38-2660](#)



## EN Initial and Final Set Needle

Code: [38-2110](#)



## EN Vicat Mould

Code: [38-2300](#)



## Engineer's Steel Rule

Code: [81-0805](#)



## Harvard Trip Balance

Code: [78-7090](#)



## Vicat Mould

Code: [38-2200](#)



## Weights for Harvard Trip Balance

Code: [78-7110](#)



## Vicat Apparatus

Code: [38-2012](#)

Product Group: [Vicat Apparatus](#)

Includes Vicat needle and mould.

## Standards

ASTM C91, ASTM C187, ASTM C191, AASHTO T129, AASHTO T131

## Specification

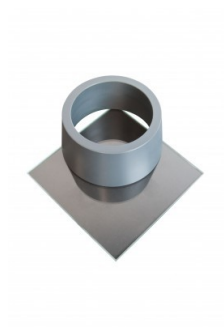
Plunger	Reversible; 10 mm diam. at one end and 1 mm diam. needle at other end; combined weight 300 grams.
Needle	Steel; mounted in plunger; 1 mm diam. x 50 mm long.
Scale	Graduated in millimeters.
Mold	Hard rubber; 70 mm base diam. x 60 mm top diam. x 40 mm h.
Weight	Net 4 lbs. (1.8 kg).

## Accessories

### ASTM Initial Set Needle

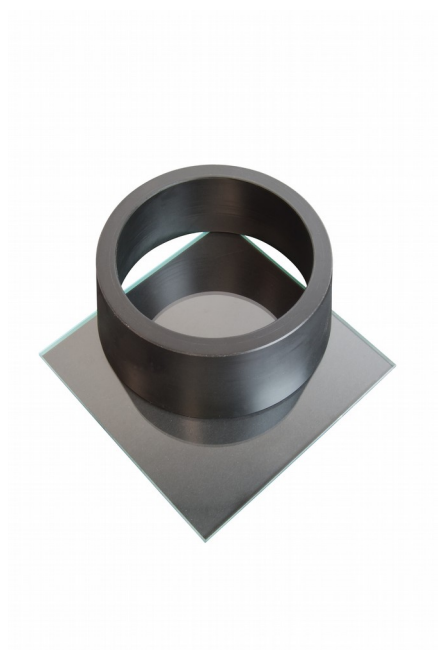
Code: [38-2620](#)





## ASTM Vicat Mould

Code: 38-2660



## EN Vicat Mould

Code: [38-2300](#)

Product Group: [Vicat Method, Automatic Vicat](#)

Accessory: manufactured from a hard rubber compound and supplied complete with a glass base plate.

## Standards

EN 196-3

## Further Information

**\*\*NOT AVAILABLE FOR SALE IN THE USA\*\***

## Accessories

### ASTM Initial Set Needle

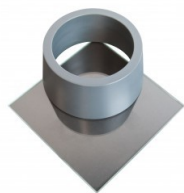
Code: [38-2620](#)





## ASTM Vicat Mould

Code: [38-2660](#)



---

## EN Initial and Final Set Needle

Code: [38-2110](#)



---

## Vicat Mould

Code: [38-2200](#)



---

## Spares/Consumables

### Consistency Plunger

Code: [38-2010/10](#)



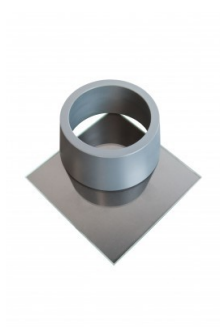
---

## Alternatives



## ASTM Initial Set Needle

Code: [38-2620](#)



## ASTM Vicat Mould

Code: [38-2660](#)



## EN Initial and Final Set Needle

Code: [38-2110](#)



## Vicat Mould

Code: [38-2200](#)