



IF IT'S WORTH BUILDING, IT'S WORTH TESTING

This wishlist was generated on 02/04/2019, and contains the following Products:

23-4090

38mm Hand Operated Hydraulic Sample Extruder with Trimming Knife 38mm Split Former & Cutting Tool.

24-0410

Liquid Limit Device BS with Counter. C/W Metal Grooving Tool & Test Gauge.

24-0430

Glass Plate.

25-0402

Consolidation Frame One Dimensional Consolidation Incremental Loading Device.

25-0580

Constant Head Permeability Cell 75mm Diameter Specimen.

25-0660

Double Ring Infiltrometer

34-0130

Tamping Rod 16mm Dia X 600mm long hemispherical at both ends.

34-2830

Bulk Density Measure 10 Litre

34-3540/01

Concrete Mixer 56/40 Litre Capacity.

500-140

Planimeter

80-0200/01

ELE Sieve Shaker

81-0715

Straight Edge

82-4005

Glass Stirring Rod



38mm Hand Operated Hydraulic Sample Extruder with Trimming Knife 38mm Split Former & Cutting Tool.

Code: [23-4090](#)

Product Group: [Soil Extruders](#)

This Sample Extruder comprises a vertically mounted lever action hydraulic jack, with the body extended to form a chamber which accommodates a 38 mm diameter sample tube. Supplied complete with trimming knife, 38 mm split former and wire saw.

Standards

BS 1377-1

Alternatives



Cbr/Core Cutter Extruder Frame and Hydraulic Jack Extrudes 150mm/6 Inch Diameter Specimens.

Code: [23-4250](#)



Proctor/Core Cutter Extruder Frame and Hydraulic Jack. Extrudes 100mm/4 Inch Diameter Specimens

Code: [23-4200](#)



Liquid Limit Device BS with Counter. C/W Metal Grooving Tool & Test Gauge.

Code: [24-0410](#)

Product Group: [Casagrande Method](#)

With revolution counter. Complete with metal grooving tool and test gauge.

Standards

BS 1377-2

Accessories



Glass Plate.

Code: [24-0430](#)



Grooving Tool and Gauge B.S.

Code: [24-0425](#)

Alternatives



Motorised Liquid Limit Device W/ Counter BS 220-240V 50Hz 1Ph.

Code: [24-0417/01](#)



Glass Plate.

Code: [24-0430](#)

Product Group: [Casagrande Method, Determination of Plastic Limit](#)

500 mm square x 10 mm thick.

Standards

BS 1377-2



Consolidation Frame One Dimensional Consolidation Incremental Loading Device.

Code: 25-0402

Product Group: Consolidation Apparatus, Table Top Consolidation Apparatus

- High capacity - 8800 kPa on 50 mm diameter specimens using 11:1 beam ratio
- Triple beam ratio, 9:1, 10:1, 11:1
- Compact unit ensures maximum space saving

The ELE Oedometer is rigidly constructed to ensure minimum frame distortion. The frame is designed to load the specimen through a yoke assembly and one of three alternative beam ratios. The beam is fitted with a counterbalance weight and beam support jack. The cell platform will accept the complete range of ELE consolidation cells and is fitted with a central spigot to ensure accurate centring of the cell under the loading yoke. Dimensions without hanger 711 x 203 x 508 mm (l x w x h). Weight 24 kg.

Standards

ASTM D2435, ASTM D4546, AASHTO T216, ASTM D3877, BS 1377-5

Further Information

Supplied without dial gauge and weights.

Specification

Load Capacity	48 tons/sq. ft. (5,14 8 kPa) on 2.5" (63 mm) diam. samples.
Loading Beam	Cast aluminum; counterbalanced; 9:1,10:1 and 11 :1 ratios.
Frame	Cast aluminum; integral beam support jack; plated steel and platform.
Dimensions	203 x 711 x 508 mm, (8" w. x 28" d. x 20" h) . excluding weight hanger.
Weight	24 KG

Accessories



16 Ton Weight Set

Code: [25-0544](#)



2.416" Fixed Ring Consolidometer

Code: [25-0480](#)



2.5" Floating Ring Consolidometer

Code: [25-0530](#)



Consolidation Cell Complete 2.5 Inch Diameter Sample. Inc. Porous Discs and Cutting Ring.

Code: [25-0479](#)



Consolidation Cell Complete 50mm Diameter Sample.

Code: [25-0455](#)



Consolidation Cell/ Oedometer Complete 75mm Diameter Sample

Code: [25-0503](#)



Floor Mounting Stand.

Code: [25-0429](#)



Mechanical Dial Indicator - 0.4" Range

Code: [88-4070](#)



Mechanical Dial Indicator - 1.0" Range Counter Clockwise Movement

Code: [88-4120](#)



Mechanical Dial Indicator - 10 mm Range

Code: [88-4080](#)



Mechanical Dial Indicator - 25 mm Range Counter Clockwise Movement

Code: [88-4130](#)



Set of Weights 100Kg Total Weight.

Code: [25-0408](#)



Weight Set A

Code: [25-0535](#)



Weight Set B

Code: [25-0537](#)

Spares/Consumables



Electronic Digital Indicator, 0.600"/15 mm range

Code: [88-4210](#)

Alternatives



Pneumatic Consolidation Apparatus

Code: [25-0560](#)



Constant Head Permeability Cell 75mm Diameter Specimen.

Code: [25-0580](#)

Product Group: [Constant Head Apparatus](#)

75 mm Diameter

Standards

BS 1377-5

Specification

Nominal Cell inside diameter	75 mm
Cell wall	Transparent plastic
Take-off points	3
End plates	Anodised aluminium
Weight kg	2.6



Double Ring Infiltrrometer

Code: [25-0660](#)

Product Group: [Double Ring Infiltrrometer](#)

Standards

ASTM D3385

Specification

Rings

Aluminum; two included, 12" i.d. x 20" h. (305 x 508 mm) and 24" i.d. x 20" h. (610 x 508 mm).

Driving Cap

Aluminum; 1/2" (12.7 mm) thick; with centering pins.

Splash Guards

Neoprene; two included; 6" (152 mm) square.

Mariotte Tubes

Graduated; two included; 3,000 ml and 10,000 ml capacities.

Weight

Net 70 lbs. (31.7 kg); Shpg. 90 lbs. (40.8 kg).

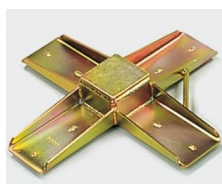
Accessories



Club hammer

Code: [29-5040](#)

Spares/Consumables



Driving Plate

Code: [514-446](#)

Alternatives



Double Ring Infiltrometer Kit.

Code: [514-440](#)



Tamping Rod 16mm Dia X 600mm long hemispherical at both ends.

Code: [34-0130](#)

Product Group: [Precision Air Entrainment Meter, Slump Test, Accessories for Concrete Moulds](#)

Steel, 600 mm long x 16 mm dia, hemispherical at both ends.

Please note this item is not graduated.

Further Information

****NOT AVAILABLE FOR SALE IN THE USA****



Bulk Density Measure 10 Litre

Code: 34-2830

Product Group: Bulk Density Measures, Fresh Concrete - Bulk Density Measures

Manufactured from heavy gauge steel these bulk density measures comply with the requirements of either BS 812, EN 1097-3, 12350-6 or ASTM C138. All measures incorporate carrying handles as standard. The measures are coated against corrosion.

Standards

EN 12350-6, ASTM C138, EN 1097-3

Further Information

****NOT AVAILABLE FOR SALE IN THE USA****

For other bulk density measures see the aggregates section

Accessories



Aluminium Scoop Large

Code: 81-0220



Compacting Bar 25mm Sq X 380mm

Code: 34-2910



Float - Plasterer's type

Code: 81-0340



Sample Tray - 1200 x 1160 x 50 mm

Code: [81-4230](#)



Shovel - With flat blade

Code: [81-0240](#)

Spares/Consumables



Soft Headed Mallet.

Code: [29-5020](#)



Concrete Mixer 56/40 Litre Capacity.

Code: [34-3540/01](#)

Product Group: [ELE Concrete Mixer](#)

- Portable and compact
- Tipping mechanism
- Adjustable blades
- Simple to clean and maintain

It is essential that the mixing of fresh concrete for laboratory test samples is thorough and consistent. The ELE Concrete Mixer is ideally suited for this purpose.

The mixer has been developed to give efficient mixing of both wet and dry materials. The mixing pan is removable and tilts for easy access to the pan and emptying on completion of the mixing operation. It is rotated by a turntable driven by a 1500 W, IP55 protected electric motor.

The mixer head lifts clear to provide maximum access to the pan and holds the mixing blades at a constant depth during the mixing operation. The blades are readily adjusted to suit the different types and volume of materials to be mixed.

Further Information

****NOT AVAILABLE FOR SALE IN THE USA****

220 - 240 V AC, 50 Hz, 1 ph.

Dimensions: 950 x 1050 x 1250 (mm)

Weight (Approx.) 255 kg

Power: 1500 W

Alternatives



ELE Concrete Mixer 56/40 Litre Capacity.

Code: [34-3540/06](#)



Planimeter

Code: [500-140](#)

Product Group: [Surveying Equipment](#)

Complete in fitted case.

Further Information

320 x 50 x 140 mm



ELE Sieve Shaker

Code: 80-0200/01

Product Group: ELE Sieve Shaker

The ELE sieve shaker is powered by an electromagnetic drive that has no rotating parts to wear making it maintenance free and extremely quiet in operation.

The unit features a triple Vertical-Lateral-Rotary vibrating action that moves the sample over the sieve producing faster more efficient sieving, while the rapid vertical movements also help keep the apertures from blinding.

The shaker is ideal for laboratory or on site use. It is robust, compact and sufficiently lightweight to be portable. The separate digital microprocessor controlled console unit incorporates a keypad for setting the sieving program and is isolated from any effects of vibration from the shaker.

As standard the shaker includes, timer 0-999 minutes, adjustable vibration intensity and adjustable intermittent or continuous operation.

Further Information

****NOT AVAILABLE FOR SALE IN THE USA****

The unit accepts up to ten 200 mm or 8 inch, full height, diameter sieves and lid and receiver, or up to six 300 mm or 12 inch diameter sieves and lid and receiver. Complete as specified. Dimensions (l x w x h) 380 x 440 x 1085 mm. For 220 - 240 V AC, 50 Hz 1ph.



Straight Edge

Code: [81-0715](#)

Product Group: [Miscellaneous Laboratory Hardware](#)

Further Information

****NOT AVAILABLE FOR SALE IN THE USA****



Glass Stirring Rod

Code: [82-4005](#)

Product Group: [Syringe and Stirring Rod](#)

7 mm diameter x 200 mm long. Pack of 10.

Further Information

****NOT AVAILABLE FOR SALE IN THE USA****