



IF IT'S WORTH BUILDING, IT'S WORTH TESTING

This wishlist was generated on 02/04/2019, and contains the following Products:

23-1501

100mm Dia Soil Auger Head

23-1547

Handle and T Piece for Use with EL23-1541.

24-0425

Grooving Tool and Gauge B.S.

24-8080/01

Automatic Soil Compactor BS CE Compliant

25-0660

Double Ring Infiltrometer

34-6122/01

Melting Pot 4 Litre Capacity. 50 to 300 Deg. C. Temperature Range.

36-3320/01

ADR Touch SOLO 3000 BS EN Compression Machine with Digital Readout and Self Centring Platens.

37-5180

EN 12390-3/4 Distance Piece - 100 mm Depth

78-1250/01

225 Litre Drying Oven

78-5447/01

Electronic Balance - 3600g x 0.01g

80-0200/01

ELE Sieve Shaker

82-3510

Hydrometer



100mm Dia Soil Auger Head

Code: [23-1501](#)

Product Group: [Soil and Gravel Auger Heads](#)

Constructed of heavy-duty steel plates; partly interlocked at the cutting end and suitable for cohesive soils.

Accessories



38mm Diameter Sample Tube 230mm Long Complete with End Caps.

Code: [23-1577](#)



Extension Rod 27mm Diameter 1m Long. for Use with Auger Heads

Code: [23-1541](#)



Handle and T Piece for Use with EL23-1541.

Code: [23-1547](#)



Jarring Link for Driving Sample Tubes.

Code: [23-1587](#)



Spiral Auger 40mm Diameter. One Piece Model

Code: [23-1617](#)



Stillson Wrench Size 14.

Code: [23-1543](#)

Alternatives



150mm Dia Gravel Auger Head.

Code: [23-1517](#)



150mm Dia Soil Auger Head

Code: [23-1504](#)



50mm Dia Dutch Soil Auger Head.

Code: [23-1525](#)



Handle and T Piece for Use with EL23-1541.

Code: [23-1547](#)

Product Group: [Extension Rods, Handles and Tools](#)



Grooving Tool and Gauge B.S.

Code: [24-0425](#)

Product Group: [Casagrande Method](#)

Constructed to British Standards.

Standards

BS 1377-2



Automatic Soil Compactor BS CE Compliant

Code: 24-8080/01

Product Group: BS CE Automatic Compactors, Automatic Soil Compactor

- With NEW CE Compliant guarding as an extra safety measure for users
- Five models meeting requirements of BS/EN and ASTM available
- Complies to BS 1377-4, BS 1924-2, EN 13286-2, EN 13286-47, ASTM D558, ASTM D698, ASTM D1557, AASHTO T99, AASHTO T134, AASHTO T180 standards
- Automatic re-setting of counter after completion of blow pattern

The time and effort required to prepare specimens for compaction studies and other test methods can often be costly and time-consuming. The use of an automatic, mechanical compactor will show considerable cost benefits over hand compaction methods.

These machines automatically compact specimens eliminating the laborious hand compaction method. The height and weight of the rammer are adjustable to suit test requirements.

An automatic blow pattern ensures optimum compaction for each layer of soil in compliance with the standards. The rammer travels across the mould and the table rotates the mould in equal steps on a base that is extremely stable. The number of blows per layer can be set at the beginning of the test.

Preset blow pattern ensures an even compaction, includes solid state controls for reliability and maintenance. An automatic digital counter resets to zero on the completion of a test. The selectable rammer has a drop height of 300-450mm, a selectable rammer weight of 2.5 or 4-5kg. A preset number of blows per layer can be set by thumb wheel control. A compaction rate of approximately 26 blows per minute. Accepts BS Standard Compaction and CBR moulds; also meets the requirements of BS 1377-4, BS 1924-2, EN 13286-2, EN 13286-47, ASTM D558, ASTM D698, ASTM D1557, AASHTO T99, AASHTO T134, AASHTO T180.

Specification

Standards

BS 1377-4, BS 1924-2, EN 13286-2, EN 13286-47, ASTM D558,

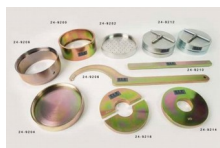
| | |
|--------------|--|
| | ASTM D698, ASTM D1557, AASHTO T99, AASHTO T134, AASHTO T180 |
| Rammer BS/EN | Circular faced, 50 mm dia, selectable to 2.5 kg or 4.5 kg weight |
| Rammer ASTM | Circular faced, 2 in (50.8 mm) dia, selectable to 5.5 lb (2.5 kg) or 10 lb (4.5 kg) weight |
| Drop BS/EN | Adjustable to 300 mm or 450 mm |
| Drop ASTM | Adjustable to 12 in (305 mm) or 18 in (457 mm) |
| Weight (kg) | 165 |

Accessories



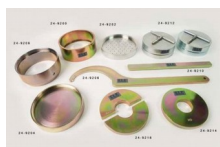
BS Cbr Mould Body.

Code: [24-9198](#)



BS Extension Collar

Code: [24-9200](#)



BS Solid Base or Top Plate

Code: [24-9204](#)



BS Standard Compaction Mould 1000Cm Capacity.

Code: [24-9000](#)



Double Ring Infiltrrometer

Code: [25-0660](#)

Product Group: [Double Ring Infiltrrometer](#)

Standards

ASTM D3385

Specification

Rings

Aluminum; two included, 12" i.d. x 20" h. (305 x 508 mm) and 24" i.d. x 20" h. (610 x 508 mm).

Driving Cap

Aluminum; 1/2" (12.7 mm) thick; with centering pins.

Splash Guards

Neoprene; two included; 6" (152 mm) square.

Mariotte Tubes

Graduated; two included; 3,000 ml and 10,000 ml capacities.

Weight

Net 70 lbs. (31.7 kg); Shpg. 90 lbs. (40.8 kg).

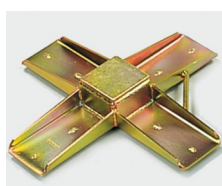
Accessories



Club hammer

Code: [29-5040](#)

Spares/Consumables



Driving Plate

Code: [514-446](#)

Alternatives



Double Ring Infiltrometer Kit.

Code: [514-440](#)



Melting Pot 4 Litre Capacity. 50 to 300 Deg. C. Temperature Range.

Code: [34-6122/01](#)

Product Group: [Melting Pot](#)

This unit is suitable for melting wax and capping compound and comprises a metal container in a welllagged steel jacket. A thermostatic control and stand-by heat switch are fitted. Supplied complete with lift-off cover.

Standards

BS 1377-1

Further Information

****NOT AVAILABLE FOR SALE IN THE USA****

for 220 - 240 V AC, 50 - 60 Hz, 1 ph.

Specification

| | |
|--|--------------|
| Internal Dimensions (diameter x depth) | 140 x 150 mm |
| External Dimensions (diameter x depth) | 250 x 165 mm |
| Capacity | 4 litres |
| Rated Power | 300 watt |
| Temperature range | 50 to 300°C |
| Weight | 7 kg |
| Internal Dimensions (diameter x depth) | 140 x 150 mm |
| External Dimensions (diameter x depth) | 250 x 165 mm |
| Capacity | 4 litres |
| Rated Power | 300 watt |
| Temperature range | 50 to 300°C |
| Weight | 7 kg |

Alternatives



Cylinder Capping Frame Complete with 100mm and 150mm Dia Capping Plates.

Code: [34-6031](#)



Flake Capping Compound to ASTM C617 22Kg

Code: [34-6100](#)



ADR Touch SOLO 3000 BS EN Compression Machine with Digital Readout and Self Centring Platens.

Code: 36-3320/01

Product Group: BS EN Compression Machines

The ADR Touch range of 2000 kN and 3000 kN capacity compression machines has been designed to meet the need for reliable and consistent testing. The load frame is a welded steel fabrication carrying the ball-seated upper platen. Positively located on the loading ram, which is protected from debris by a flexible cover, the lower platen is marked for the centring of cube and cylinder specimens. Self-centring lower platens for cube location are supplied as standard on EN machines and are available as an optional extra on the standard machine. The two machines for cube testing to EN standards are assembled and aligned using a special compression frame stability tester.

The dimensions of the frame allow the testing of concrete cylinders up to 320 mm long x 160 mm diameter, 150 and 100 mm square cubes, and on EN/BS machines, 200 mm square cubes. Kerbs and flagstones may also be tested on ADR machines as well as 150 mm and 100 mm square section beams to ASTM C78 using the optional 100 kN flexural frames which are connected to the power pack.

Standards

EN 12350-6, NF P18-411

Further Information

****Not available for sale in the USA****

ADR Touch BS EN 2000 and 3000 kN compression machines are supplied complete with self-centring lower platen and safety gates fitted with interlock switches ready for testing 300 x 150 mm diameter cylinders.

Whilst delivering all the features and reputation of the established ADR Series with its extensive design history, the new and improved user interface provides a high quality platform for testing that enhances the performance of ELE's compression machines.

New, sophisticated electronics further the benefits of simplified operation, whilst delivering the highest levels of accuracy in testing concrete and cement/mortar samples, satisfying the needs of Quality Control Managers, Lab Managers and Technicians.

ACCURACY & SAVINGS

The new ADR Touch Series, with 145mm (5.7") high resolution QVGA touch screen interface and intuitive menu-driven operation, reduces the time taken to set up the machine and perform tests, reducing the time to train staff by up to 25%.

- Up to 6 sample types can be set as favorites, enabling one-touch set up for repeat testing.
- Full, QWERTY touch pad for input of test data.

Most testing errors produce lower strength results. Noncompliant loading rates can generate errors in measured strength. The user interface includes real-time display of load vs. time, further ensuring accurate and consistent test results and providing "goodness of test" data to improve traceability in your QC operations.

TRACEABILITY & DATA QUALITY

The ADR range now provides improved data quality and traceability in due diligence cases - it is now possible to demonstrate traceability all the way from the machine/user to the accreditation body, increasing your reputation and peace of mind - all test results now come complete with the machine serial number attached.

- Enhanced USB data communications between PC and machine - eliminating the need for download software.
- Two gigabytes of storage memory.
- Full customization of sample sizes - stress calculations are automatically recalculated.

USER SAFETY

With full safety gates as standard, total systems diagnostics, ram run-out switches and overload warnings ensure the safety of your employees and the reliability of your machine.

Specification

| | |
|-------------------------|--|
| Testing Standards | BS EN 12390-4, BS EN 12390-3, BS EN 12390-4, BS EN 12390-5, EN 12504-1, EN 1354, EN 1521, EN 3161, EN 1338, EN 772-6, EN 13286-41, BS 3892-3, BS 187, BS 6717, BS EN ISO 7500-1, ASTM E4 |
| Capacity | 3000 kN |
| Cubes (Concrete) | Up to 200 mm |
| Cylinders (Concrete) | Up to 160 x 320 mm |
| Blocks | Via optional Platen Handling System |
| Flexural Testing | Via Flexural Frame |
| TFV and ACV | Yes |
| Voltage Supply | 220-240V 50/60 Hz 1Ph. |
| Frame Class (Stability) | Tested |
| Frame Type | Welded |
| Max vert. Clearance | 340 mm |
| Max hor. Clearance | 310 mm |
| Platen Sizes | Lower 220mm sq, Upper 300mm dia |
| Max Ram Travel | 50 mm |

Accessories



100kN Flexural Fitting Kit (ADR) Used for Connecting Flexural Frames to ADR Compression Machines.

Code: [37-6138](#)



3000 kN Load Calibration Device Complete with Hand Held Readout Unit ISO376

Code: [37-8400](#)



ADR Touch Head for Compression Machines

Code: [37-5951/09](#)



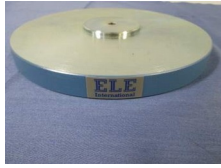
BS/EN Standard Rectangular Platen

Code: [37-4860](#)



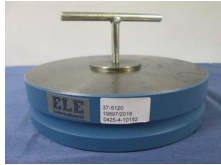
EN 12390-3/4 Distance Piece - 100 mm Depth

Code: [37-5180](#)



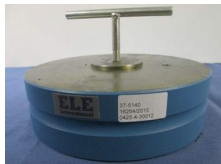
EN 12390-3/4 Distance Piece - 20 mm Depth

Code: [37-5110](#)



EN 12390-3/4 Distance Piece - 50 mm Depth

Code: [37-5120](#)



EN 12390-3/4 Distance Piece - 60 mm Depth

Code: [37-5140](#)



Impact Printer Rs232 Serial Connection. Supplied Complete with 1 Paper Roll.

Code: [37-4859/01](#)

Spares/Consumables



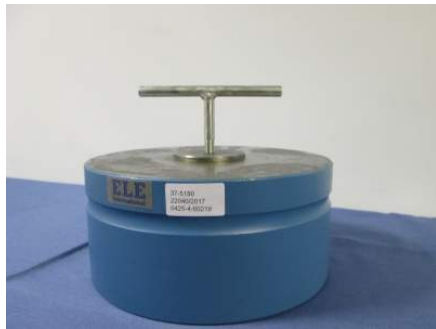
Pressure transducer, 0-700bar, 0.05 to 10v DC Output

Code: [6014A0062](#)



Pressure transducer, 0-70bar, 0.05 to 10v DC Output

Code: [6014A0065](#)



EN 12390-3/4 Distance Piece - 100 mm Depth

Code: [37-5180](#)

Product Group: [Distance Pieces](#)

Standards

BS 1881-115, EN 12390-3

Further Information

****Not available for sale in the USA****



225 Litre Drying Oven

Code: 78-1250/01

Product Group: Percentage Refusal Density (PRD),
Oven Drying Method, Oven Drying Method, Oven
Drying Method

Standards

EN 12697-32, EN 13280-4, BS 598-104, BS 1377

Specification

| | |
|---------------------------------|------------------|
| Capacity | 225 litres |
| External Dimensions (l x w x h) | 540 x 1040 x 940 |
| Internal Dimensions (l x w x h) | 440 x 920 x 600 |
| Fluctuation | ± 0.75°C |
| Rated power heater elements | 2000 W |
| Shelves supplied | 3 |
| Shelf positions | 4 |
| Weight | 80 kg |

Alternatives



100 Litre Drying Oven

Code: 78-1225/01



150 Litre Drying Oven

Code: 78-1235/01



50 Litre Drying Oven

Code: 78-1215/01

Product Sheet

www.ele.com
+44 (0) 01525 249 200



Drying Oven 425 Litre Capacity

Code: [78-0135/01](#)



Electronic Balance - 3600g x 0.01g

Code: [78-5447/01](#)

Product Group: [Electronic Balances](#)

Further Information

****Not available for sale in the USA****

Specification

| | |
|------------------------|--|
| Capacity resolution | 3600 g x 0.01 g |
| Pan size | 160 x 160 mm |
| Mains and battery | No |
| Dimensions (l x w x h) | 260 x 170 x 90 mm |
| Weight | 6 kg |
| Weighing units | g, kg, ct, GN, N, lb, oz, lb:oz, ozt, dwt, T, custom unit |
| Readability | 0.1 g |



ELE Sieve Shaker

Code: 80-0200/01

Product Group: ELE Sieve Shaker

The ELE sieve shaker is powered by an electromagnetic drive that has no rotating parts to wear making it maintenance free and extremely quiet in operation.

The unit features a triple Vertical-Lateral-Rotary vibrating action that moves the sample over the sieve producing faster more efficient sieving, while the rapid vertical movements also help keep the apertures from blinding.

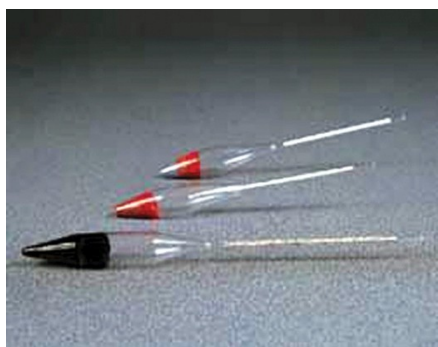
The shaker is ideal for laboratory or on site use. It is robust, compact and sufficiently lightweight to be portable. The separate digital microprocessor controlled console unit incorporates a keypad for setting the sieving program and is isolated from any effects of vibration from the shaker.

As standard the shaker includes, timer 0-999 minutes, adjustable vibration intensity and adjustable intermittent or continuous operation.

Further Information

****NOT AVAILABLE FOR SALE IN THE USA****

The unit accepts up to ten 200 mm or 8 inch, full height, diameter sieves and lid and receiver, or up to six 300 mm or 12 inch diameter sieves and lid and receiver. Complete as specified. Dimensions (l x w x h) 380 x 440 x 1085 mm. For 220 - 240 V AC, 50 Hz 1ph.



Hydrometer

Code: [82-3510](#)

Product Group: [Soundness of Aggregates,](#)
[Hydrometers, Aggregate Testing](#)

Type L50, ASTM C 88 graduated 1150 to 1200
relative density (used with magnesium sulphate
method).

Standards

BS 812, EN 1367-2, ASTM C88, AASHTO T104

Further Information

****NOT AVAILABLE FOR SALE IN THE USA****