



IF IT'S WORTH BUILDING, IT'S WORTH TESTING

This wishlist was generated on 12/04/2019, and contains the following Products:

24-4125/01

High Speed Stirrer Complete with Paddle Cup & Baffle. 220-240V 50/60Hz 1Ph.

24-4125/10

Mixing Paddle for 24-4125 Series High Speed Stirrer

24-4125/11

Soil Dispersion Cup & Baffle.

24-4145

Sodium Hexametaphosphate 500G.

24-4650

Soil Hydrometer Type 151H ASTM D422 Graduated 0.995 to 1.038 Specific Gravity.

24-4700

Hydrometer Sedimentation Cylinder

24-4865/01

Constant Temperature Bath 5 to 99.9 Deg.C X 0.1 Deg.C with Led Display and False Base Support.

79-5020

8in Dia ASTM Sieve 4.75mm Stainless Steel Mesh.

79-5070

8in Dia ASTM Sieve 2.0mm Stainless Steel Mesh.

79-5120

8in Dia ASTM Sieve 850 Mic Stainless Steel Mesh.

79-5160

8in Dia ASTM Sieve 425 Mic Stainless Steel Mesh.

79-5190

8in Dia ASTM Sieve 250 Mic Stainless Steel Mesh.

79-5240

8in Dia ASTM Sieve 106 Mic Stainless Steel Mesh.

79-5260

8in Dia ASTM Sieve 75 Mic Stainless Steel Mesh.

79-5400

8 Inch Dia Lid.

79-5510

8in Dia ASTM Sieve 9.50mm Stainless Steel Mesh.

79-5560

8in Dia ASTM Sieve 19.0mm Stainless Steel Mesh.

79-5580

8in Dia ASTM Sieve 25.0mm Stainless Steel Mesh.

79-5610

8in Dia ASTM Sieve 37.5mm Stainless Steel Mesh.

79-5630

8in Dia ASTM Sieve 50.0mm Stainless Steel Mesh.

79-5660

8in Dia ASTM Sieve 75.0mm Stainless Steel Mesh.



High Speed Stirrer Complete with Paddle Cup & Baffle. 220-240V 50/60Hz 1Ph.

Code: [24-4125/01](#)

Product Group: [Mechanical Analysis Stirrer](#)

Compact bench top stirrer used for dispersing soil samples in water. Supplied complete with mixing paddle and dispersion cup with baffle. Beaker position maintained by column retainer.

Standards

BS 1377, ASTM D422, AASHTO T88



Mixing Paddle for 24-4125 Series High Speed Stirrer

Code: [24-4125/10](#)

Product Group: [Mechanical Analysis Stirrer](#)

Standards

BS 1377, ASTM D422, AASHTO T88



Soil Dispersion Cup & Baffle.

Code: [24-4125/11](#)

Product Group: [Mechanical Analysis Stirrer](#)

Standards

BS 1377, ASTM D422, AASHTO T88



Sodium Hexametaphosphate 500G.

Code: [24-4145](#)

Product Group: [Sodium Hexametaphosphate,](#)
[Mechanical Analysis Stirrer](#)

Standards

ASTM D422, AASHTO T88, ASTM E100



Soil Hydrometer Type 151H ASTM D422 Graduated 0.995 to 1.038 Specific Gravity.

Code: [24-4650](#)

Product Group: [ASTM Soil Hydrometers, Soil Hydrometers](#)

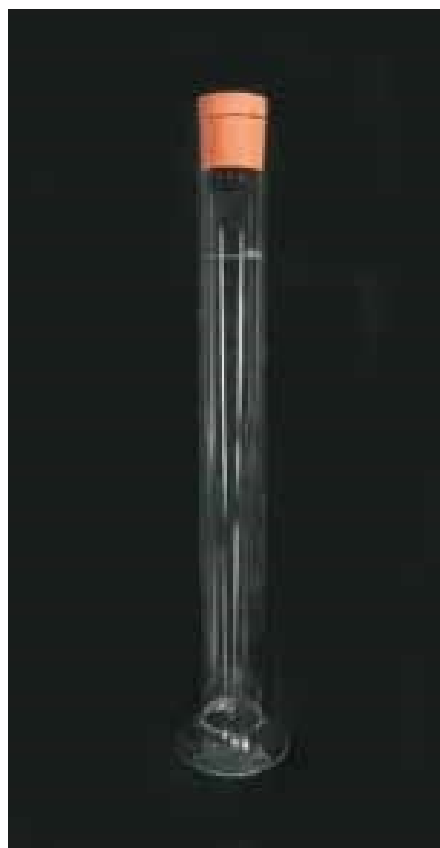
Graduated 0.995 to 1.038 g/ml.

Standards

ASTM D422, ASTM E100, AASHTO T88

Specification

Construction	Molded, seamless.
Scale	Bouyoucos; double scale.
Calibration	At 68°F.
Weight	Net 4 oz. (113 g).



Hydrometer Sedimentation Cylinder

Code: [24-4700](#)

Product Group: [Hydrometer Sedimentation Cylinder](#),
[Hydrometer Jar](#)

Glass, 1000 ml capacity complete with rubber bung.

Standards

BS 1337, ASTM D422, AASHTO T88

Further Information

1000ML Glass



Constant Temperature Bath 5 to 99.9 Deg.C X 0.1 Deg.C with Led Display and False Base Support.

Code: [24-4865/01](#)

Product Group: [Constant Temperature Bath](#)

This compact, bench-top stirrer is used for dispersing soil samples in water for hydrometer analysis. The stirrer is supplied complete with Mixing Paddle and Dispersion Cup. Weight 4 kg.

Further Information

Specially designed for the sedimentation testing of soils and other fine grained material, the bath is supplied with a false bottom to assist in circulation of the bath liquid. Will accommodate six Sedimentation Cylinders.

Specification

Dimensions (l x w x h)	535 x 210 x 610 mm external
Capacity	Holds up to 6 sedimentation cylinders
Construction	Stainless steel with toughened glass front
Temperature Control	Heater/thermostat/circulation with digital controller unit 5 to 99.9 Deg.C X 0.1 Deg.C
Power	1500 watts
Weight kg	12



8in Dia ASTM Sieve 4.75mm Stainless Steel Mesh.

Code: 79-5020

Product Group: 8in Dia ASTM Brass Sieves, 8" Diameter ASTM Sieves, 8" Diameter ASTM Sieves, 8" Diameter ASTM Sieves

Standards

ASTM E11

Specification

Frames	Full height; 2 1/4" (51 mm) depth to mesh.
Construction	Polished and lacquered brass with S.S. mesh.
Nameplates	Show standard, alternate and Tyler Screen Scale equivalent designations.
Weights	Net 1 lb. (453 g).
Sieve Size or Number	No. 4
Sieve Opening Standard	4.75 mm
Sieve Opening Alternative (in.)	0.187



8in Dia ASTM Sieve 2.0mm Stainless Steel Mesh.

Code: 79-5070

Product Group: 8in Dia ASTM Brass Sieves, 8" Diameter ASTM Sieves, 8" Diameter ASTM Sieves, 8" Diameter ASTM Sieves

Standards

ASTM E11

Specification

Frames	Full height; 2 1/4" (51 mm) depth to mesh.
Construction	Polished and lacquered brass with S.S. mesh.
Nameplates	Show standard, alternate and Tyler Screen Scale equivalent designations.
Weights	Net 1 lb. (453 g).
Sieve Size or Number	No. 10
Sieve Opening Standard	2.00 mm
Sieve Opening Alternative (in.)	0.0787



8in Dia ASTM Sieve 850 Mic Stainless Steel Mesh.

Code: 79-5120

Product Group: 8in Dia ASTM Brass Sieves, 8" Diameter ASTM Sieves, 8" Diameter ASTM Sieves, 8" Diameter ASTM Sieves

Standards

ASTM E11

Specification

Frames	Full height; 2 1/4" (51 mm) depth to mesh.
Construction	Polished and lacquered brass with S.S. mesh.
Nameplates	Show standard, alternate and Tyler Screen Scale equivalent designations.
Weights	Net 1 lb. (453 g).
Sieve Size or Number	No. 20
Sieve Opening Standard	850 um
Sieve Opening Alternative (in.)	0.331



8in Dia ASTM Sieve 425 Mic Stainless Steel Mesh.

Code: 79-5160

Product Group: 8in Dia ASTM Brass Sieves, 8" Diameter ASTM Sieves, 8" Diameter ASTM Sieves, 8" Diameter ASTM Sieves

Standards

ASTM E11

Specification

Frames	Full height; 2 1/4" (51 mm) depth to mesh.
Construction	Polished and lacquered brass with S.S. mesh.
Nameplates	Show standard, alternate and Tyler Screen Scale equivalent designations.
Weights	Net 1 lb. (453 g).
Sieve Size or Number	No. 40
Sieve Opening Standard	425 um
Sieve Opening Alternative (in.)	0.0165



8in Dia ASTM Sieve 250 Mic Stainless Steel Mesh.

Code: 79-5190

Product Group: 8in Dia ASTM Brass Sieves, 8" Diameter ASTM Sieves, 8" Diameter ASTM Sieves, 8" Diameter ASTM Sieves

Standards

ASTM E11

Specification

Frames	Full height; 2 1/4" (51 mm) depth to mesh.
Construction	Polished and lacquered brass with S.S. mesh.
Nameplates	Show standard, alternate and Tyler Screen Scale equivalent designations.
Weights	Net 1 lb. (453 g).
Sieve Size or Number	No. 60
Sieve Opening Standard	250 um
Sieve Opening Alternative (in.)	0.0098



8in Dia ASTM Sieve 106 Mic Stainless Steel Mesh.

Code: 79-5240

Product Group: 8in Dia ASTM Brass Sieves, 8" Diameter ASTM Sieves, 8" Diameter ASTM Sieves, 8" Diameter ASTM Sieves

Standards

ASTM E11

Specification

Frames	Full height; 2 1/4" (51 mm) depth to mesh.
Construction	Polished and lacquered brass with S.S. mesh.
Nameplates	Show standard, alternate and Tyler Screen Scale equivalent designations.
Weights	Net 1 lb. (453 g).
Sieve Size or Number	No. 140
Sieve Opening Standard	106 um
Sieve Opening Alternative (in.)	0.0041



8in Dia ASTM Sieve 75 Mic Stainless Steel Mesh.

Code: 79-5260

Product Group: 8in Dia ASTM Brass Sieves, 8" Diameter ASTM Sieves, 8" Diameter ASTM Sieves, 8" Diameter ASTM Sieves

Standards

ASTM E11

Specification

Frames	Full height; 2 1/4" (51 mm) depth to mesh.
Construction	Polished and lacquered brass with S.S. mesh.
Nameplates	Show standard, alternate and Tyler Screen Scale equivalent designations.
Weights	Net 1 lb. (453 g).
Sieve Size or Number	No. 200
Sieve Opening Standard	75 um
Sieve Opening Alternative (in.)	0.0029



8 Inch Dia Lid.

Code: 79-5400

Product Group: Sieve Lids and Receivers ASTM, 8"
Diameter ASTM Sieves, 8" Diameter ASTM Sieves, 8"
Diameter ASTM Sieves

Standards

ASTM E11



8in Dia ASTM Sieve 9.50mm Stainless Steel Mesh.

Code: 79-5510

Product Group: 8in Dia ASTM Brass Sieves, 8" Diameter ASTM Sieves, 8" Diameter ASTM Sieves, 8" Diameter ASTM Sieves

Standards

ASTM E11

Specification

Frames	Full height; 2 1/8" (51 mm) depth to mesh.
Construction	Polished and lacquered brass with S.S. mesh.
Nameplates	Show standard, alternate and Tyler Screen Scale equivalent designations.
Weights	Net 1 lb. (453 g).
Sieve Size or Number	3/8"
Sieve Opening Standard	9.5 mm
Sieve Opening Alternative (in.)	0.375



8in Dia ASTM Sieve 19.0mm Stainless Steel Mesh.

Code: 79-5560

Product Group: 8in Dia ASTM Brass Sieves, 8" Diameter ASTM Sieves, 8" Diameter ASTM Sieves, 8" Diameter ASTM Sieves

Standards

ASTM E11

Specification

Frames	Full height; 2 1/4" (51 mm) depth to mesh.
Construction	Polished and lacquered brass with S.S. mesh.
Nameplates	Show standard, alternate and Tyler Screen Scale equivalent designations.
Weights	Net 1 lb. (453 g).
Sieve Size or Number	3/4"
Sieve Opening Standard	19.0 mm
Sieve Opening Alternative (in.)	0.75



8in Dia ASTM Sieve 25.0mm Stainless Steel Mesh.

Code: 79-5580

Product Group: 8in Dia ASTM Brass Sieves, 8" Diameter ASTM Sieves, 8" Diameter ASTM Sieves, 8" Diameter ASTM Sieves

Standards

ASTM E11

Specification

Frames	Full height; 2 1/4" (51 mm) depth to mesh.
Construction	Polished and lacquered brass with S.S. mesh.
Nameplates	Show standard, alternate and Tyler Screen Scale equivalent designations.
Weights	Net 1 lb. (453 g).
Sieve Size or Number	1"
Sieve Opening Standard	25.0 mm
Sieve Opening Alternative (in.)	1



8in Dia ASTM Sieve 37.5mm Stainless Steel Mesh.

Code: 79-5610

Product Group: 8in Dia ASTM Brass Sieves, 8" Diameter ASTM Sieves, 8" Diameter ASTM Sieves, 8" Diameter ASTM Sieves

Standards

ASTM E11

Specification

Frames	Full height; 2 1/2" (51 mm) depth to mesh.
Construction	Polished and lacquered brass with S.S. mesh.
Nameplates	Show standard, alternate and Tyler Screen Scale equivalent designations.
Weights	Net 1 lb. (453 g).
Sieve Size or Number	1-1/2"
Sieve Opening Standard	38.1 mm
Sieve Opening Alternative (in.)	1.5



8in Dia ASTM Sieve 50.0mm Stainless Steel Mesh.

Code: 79-5630

Product Group: 8in Dia ASTM Brass Sieves, 8" Diameter ASTM Sieves, 8" Diameter ASTM Sieves, 8" Diameter ASTM Sieves

Standards

ASTM E11

Specification

Frames	Full height; 2 1/4" (51 mm) depth to mesh.
Construction	Polished and lacquered brass with S.S. mesh.
Nameplates	Show standard, alternate and Tyler Screen Scale equivalent designations.
Weights	Net 1 lb. (453 g).
Sieve Size or Number	2"
Sieve Opening Standard	50 mm
Sieve Opening Alternative (in.)	2



8in Dia ASTM Sieve 75.0mm Stainless Steel Mesh.

Code: 79-5660

Product Group: 8in Dia ASTM Brass Sieves, 8" Diameter ASTM Sieves, 8" Diameter ASTM Sieves, 8" Diameter ASTM Sieves

Standards

ASTM E11

Specification

Frames	Full height; 2 1/4" (51 mm) depth to mesh.
Construction	Polished and lacquered brass with S.S. mesh.
Nameplates	Show standard, alternate and Tyler Screen Scale equivalent designations.
Weights	Net 1 lb. (453 g).
Sieve Size or Number	3"
Sieve Opening Standard	75 mm
Sieve Opening Alternative (in.)	3