



IF IT'S WORTH BUILDING, IT'S WORTH TESTING

This wishlist was generated on 29/05/2019, and contains the following Products:

24-9186

Penetration Dial Gauge BS

34-0192

Slump Test Set BS & ASTM. C/W Slump Cone Base Plate Steel Rule Tamping Rod & Funnel.

34-3590/01

Tilting Drum Concrete Mixer 120/90L/ (4/3Cu.Ft) Complete with Stand

34-4720

150mm Plastic Cube Mould

34-5294

Plastic Cylinder Mould 6" x 12"

34-8507

Digital Length Comparator

35-1500

Advanced SilverSchmidt Concrete Test Hammer (ST Version)

35-2302/09

Ultrasonic Concrete Tester 110-240V 50/60Hz 1Ph

35-2505

Crack Detection Microscope Magnification X 40 Measuring Range of 4mm In 0.02mm Divisions

36-5165/01

ADR Touch Control PRO 3000 Auto BS EN Compression Machine

37-4980

Standard Distance Piece - 20 mm Depth

37-5000

Standard Distance Piece - 50 mm Depth

37-5020

Standard Distance Piece - 60 mm Depth

37-5050

Standard Distance Piece - 80 mm Depth

37-5100

Standard Distance Piece - 100 mm Depth

37-5628

6x12 Concrete Cyl. Compressometer - Digital Indicators

37-6133

Ball Seating Assembly 150mm Dia Platens.

37-6138

100kN Flexural Fitting Kit (ADR) Used for Connecting Flexural Frames to ADR Compression Machines.

37-6140

100kN Flexural and Transverse (Flags) Frame. Supplied Without Specimen Bearers and Fitting Kit.

37-6330

Specimen Bearer Assembly

37-6362

Specimen Bearers for Testing Kerbs. Used on 37-6140 Flags Frame.

37-6364

Specimen Bearers for testing flags. Used on 37-6140 flags frame.

38-2012

Vicat Apparatus

38-2110

EN Initial and Final Set Needle

38-2300

EN Vicat Mould

38-2620

ASTM Initial Set Needle

38-2660

ASTM Vicat Mould

78-1250/01

225 Litre Drying Oven

78-5456/01

Electronic Balance - 4600 g x 0.01 g

78-5477/01

Electronic Balance - 16 000 g x 0.5 g

79-0120

200mm Dia BS Sieve 150 Mic Stainless Steel Mesh.

79-0200

200mm Dia BS Sieve 600Mic Stainless Steel Mesh.

79-0240

200mm Dia BS Sieve 1.18mm Stainless Steel Mesh.

79-0320

200mm Dia BS Sieve 4.75mm Stainless Steel Mesh.

79-1550

200mm Dia BS Sieve 9.50mm Perforated Plate.

79-1565

200mm Dia BS Sieve 12.5mm Perforated Plate.

79-1570

200mm Dia BS Sieve 13.2mm Perforated Plate.

79-1605

200mm Dia BS Sieve 25.0mm Perforated Plate.

79-1640

200mm Dia BS Sieve 37.5mm Perforated Plate.

79-5020

8in Dia ASTM Sieve 4.75mm Stainless Steel Mesh.

79-5180

8in Dia ASTM Sieve 300 Mic Stainless Steel Mesh.

79-5400

8 Inch Dia Lid.

Contents

www.ele.com
+44 (0) 01525 249 200



79-5510

8in Dia ASTM Sieve 9.50mm Stainless Steel Mesh.

79-5910

12in Dia ASTM Sieve 1.00mm Stainless Steel Mesh.

80-0200/01

ELE Sieve Shaker



Penetration Dial Gauge BS

Code: [24-9186](#)

Product Group: [In-situ CBR](#), [Conversion of In-situ to Laboratory CBR](#), [Penetration Measurement](#)

Complete with rack extensions and chisel edge anvil. 25 mm travel x 0.01 mm divisions.

Standards

BS 1377, BS 1924



Slump Test Set BS & ASTM. C/W Slump Cone Base Plate Steel Rule Tamping Rod & Funnel.

Code: [34-0192](#)

Product Group: [Slump Test](#)

BS and ASTM comprising of slump cone, base plate, steel rule, tamping rod and funnel.

Further Information

****NOT AVAILABLE FOR SALE IN THE USA****



Tilting Drum Concrete Mixer 120/90L/ (4/3Cu.Ft) Complete with Stand

Code: [34-3590/01](#)

Product Group: [Tilting Drum Mixer](#)

120/90 litre mixing capacity. For 220 - 240 V AC, 50 Hz, 1 ph.

Standards

EN 12390-2

Further Information

****NOT AVAILABLE FOR SALE IN THE USA****



150mm Plastic Cube Mould

Code: [34-4720](#)

Product Group: [Cube Moulds \(Plastic\)](#)

ELE International's Moulds are made of high quality, durable plastic and are built for heavy-duty laboratory use.

- Lightweight
- Easy to transport
- Robust plastic
- Reusable
- No tools required
- Standard sizes
- Easy to clean
- Maintenance free
- Corrosion proof
- Reinforced sides for added rigidity



Plastic Cylinder Mould 6" x 12"

Code: [34-5294](#)

Product Group: [Plastic Cylinder Moulds](#)

(152 x 305 mm). Carton of 20.

Standards

ASTM C39, ASTM C470, AASHTO M205

Specification

Construction	Single unit molded polypropylene
Inner Dimensions	6" diam x 12" h (152 x 305 mm)
Weights	Net 15 lbs (6.8 kg)



Digital Length Comparator

Code: 34-8507

Product Group: Length Comparator

English or Metric units selectable.

Standards

ASTM C151, ASTM C157, ASTM C227, ASTM C490, ASTM C531, AASHTO T107, AASHTO T160

Specification

Frame	Metal, double-post construction; rust resistant finish.
Anvils	One movable and one stationary; shaped to receive contact points in sample bars.
Indicator	Digital indicator with English or Metric units selectable.
Reference Bar	Invar metal.
Dimensions	7-1/2" w. x 7-3/4" d. x 17-3/4" h. (190 x 197 x 451 mm)
Weight	14.9 lbs. (6.8 kg)



Advanced SilverSchmidt Concrete Test Hammer (ST Version)

Code: 35-1500

Product Group: Surface Hardness, Surface Hardness

The SilverSchmidt ST is the first integrated concrete test hammer featuring true rebound value and unmatched repeatability.

Two factors contribute to the improved performance of this concrete test hammer over its predecessors:

- Velocity based detection of the rebound quotient
- The lightweight hybrid design of the impact plunger is made from aerospace alloy, matched to the elastic properties of the concrete and equipped with a hardness steel cap

Independent validation testing by BAM (Federal Institute for Materials Research and Testing, Germany) has shown the SilverSchmidt ST to have less dispersion than the classical concrete test hammer over the entire range.

The unique design and high quality construction of the concrete test hammer SilverSchmidt ST makes rebound hammer testing quicker and more accurate than ever before.

Standards

EN 12504-2, EN 13791, ASTM C805

Further Information

- The SilverSchmidt ST concrete test hammer combines a high measurement accuracy with an unmatched repeatability.
- The rebound value requires no angular correction
- The concrete test hammer offers customer conversion curves for a wide range of compressive concrete strengths, including low f_c (<10 N/mm², 1'450 psi) and high strength concrete (up to 100 N/mm², 14'500 psi)

- A large number of measurement points can be easily collected by the concrete test hammer and automatically evaluated according to statistical data

- The concrete test hammer offers automatic conversion to the required measurement unit (MPa, N/mm², kg/cm², psi)

PLEASE NOTE THIS MODEL IS SUPPLIED WITH SOFTWARE ONLY FOR PERFORMING FIRMWARE UPGRADES AND SELECTING STATISTICS PRESETS.

Specification

Technical Data	Silver Schmidt
Impact Energy	2.207 Nm
Hammer Mass	135 g
Spring Constant	0.79 N/mm
Spring Extension	75 mm (2.95")
Dimensions	55 x 55 x 255 mm (2.16" x 2.16" x 9.84")
Concrete Compressive Strengths	10-100 N/mm ² (1450-14500 psi)
Weight	570 g (1.4 lb)



Ultrasonic Concrete Tester 110-240V 50/60Hz 1Ph

Code: 35-2302/09

Product Group: [Ultrasonic Detection](#), [Ultrasonic Concrete Test](#)

35-2302/09 is the most versatile Concrete Tester to date. It has all the functions of the classic Concrete Tester, but offers additional benefits. Designed with laboratory use in mind, its compact size, rugged construction and optimized power consumption make it equally suitable for on-site use.

Along with the traditional transit time and pulse velocity measurement, 35-2302/09 offers path length measurement, perpendicular crack depth measurement and surface velocity measurement.

Optimized pulse shaping gives greater transmission range at lower voltage levels. This coupled with automated combination of the transmitter voltage and the receiver gain ensures an optimum received signal level, ensuring accurate and stable measurements.

The waveform can be viewed either via an external oscilloscope connection or directly on a connected PC screen.

Full remote control capability completes the package.

Complete with two 54 kHz transducers each with 3.6 metres of cable, coupling agent, carrying case and instruction manual.

Applications include pulse velocity determination, quality assessment and uniformity, modulus of elasticity measurement, curing status evaluation, crack depth estimation, assessment of fibre reinforced concrete.

Consists of display unit, 2 transducers (54 kHz), 2 BNC cables 1.5m, couplant, calibration rod, USB charger with USB-cable, 4x AA (LR6) batteries, data carrier with software, documentation and carrying case.

Standards

BS 1881-203, EN 12504-4, ASTM C597, D2845

Further Information

For 110 - 240 V AC, 50 - 60 Hz, 1 ph.

Specification

Measuring range	Up to 15 m depending on concrete quality
Bandwidth	20 to 500 kHz
Technology	Ultrasonic pulse velocity
Measuring resolution	0.1 us
Pulse voltage UPV	125 to 500 V
Receiver gain	1x, 10x, 100x, auto
Pulse shape	Square wave
Nominal transducer frequency	24-500 kHz
Number of channels	1



Crack Detection Microscope Magnification X 40 Measuring Range of 4mm In 0.02mm Divisions

Code: 35-2505

Product Group: Crack Detection, Crack Detection
Microscope

Specifically designed for measuring crack width in concrete, this high definition microscope operates via an adjustable light source provided by high power batteries.

Supplied in a pocket sized carrying case.

Specification

Magnification	X 35 .
Measuring Range	4 mm.
Divisions	0.02 mm.
Dimensions	1.5" x 3.5" x 6" (40 x 90 x 150 mm) in case.
Weight	Net 19.4 oz. (550 g).



ADR Touch Control PRO 3000 Auto BS EN Compression Machine

Code: [36-5165/01](#)

Product Group: [BS EN Compression Machines](#)

The ADR Touch Control PRO 3000 Auto BS EN is supplied complete with self-centring lower platen and safety gates fitted with interlock switches ready for testing 300 x 150 mm diameter cylinders. When used for cube testing Distance pieces (EN) of the appropriate size must be ordered separately.

Standards

EN 12350-6, NF P18-411, EN 12390-4, EN 12390-3, EN 772-1, BS EN ISO 7500-1, ASTM E4

Further Information

****Not available for sale in the USA****

The ADR Touch Control PRO will deliver all the features and quality of the established ADR-Auto range, with its 20 year history, but with a new sleek design and additional capabilities. The console assembly consists of an ADR Touch Control PRO and power base which can be used with all existing concrete and cement frames

User interface

The new ADR Touch Control PRO has an improved user interface providing a high quality platform for testing that will enhance the performance of our compression machines. It now has a larger 7-inch colour touch screen with a higher definition display, allowing easier observation of test progress. A favourites option is also available, allowing users to save the most common set-ups for immediate access, without the need for navigating through selection menus.

USER FLEXIBILITY

The ADR Touch Control PRO has a unique flexible head with rotation capabilities of 75-degrees and a 45-degree tilt, improving usability and comfort for individual users. It is available with four languages English, Spanish, Portuguese and French, making it even more user-friendly and accessible to a wider audience. The new LAN connectivity feature lets the operator use the PC based APP (ELE Logger) to download test results away from the test area. User flexibility has also increased with the new ADR Touch Control Pro as it can now be operated remotely, so tests can be initiated away from the test area. Many issues can be resolved quickly by our service team through the new remote diagnostics feature and updating to the latest version of software has never been easier.

Compatibility

The all new dual sensor capabilities allow users to test both concrete and cement samples on one frame. The ADR Touch Control PRO is compatible with all existing compression frames and upgrade kits are also available. The upgrade kits can be used to convert existing ADR-Auto consoles to the new Automatic Digital Control Readout.

Testing times

The new generation ADR Compression Machines have an increased control over the pace rate, which allows users to run the pace rate higher than average, but still within standard. This produces an average time saving of 10% for a typical 150mm cube sample.

ELECTRICAL

Reduced component count and no wire design results in increased reliability and serviceability. New low voltage interlocks and e-stop has increased safety. The ADR Touch Control PRO has the latest Arm Core Processor technology which has improved the processing power and speed.

Specification

Capacity	3000 kN
Cubes (Concrete)	Up to 200 mm
Cylinders (Concrete)	Up to 160 x 320 mm
Blocks	Via Optional Platen Handling System
TFV and ACV	Yes
Voltage Supply	220-240 V 50 Hz 1 Ph
Frame Type	Welded
Max vert. Clearance	375 mm
Max hor. Clearance	320 mm
Platen Sizes	Lower 220mm sq, Upper 300mm dia
Max Ram Travel	50 mm



Standard Distance Piece - 20 mm Depth

Code: [37-4980](#)

Product Group: [Distance Pieces](#)

Further Information

Not available for sale in the USA



Standard Distance Piece - 50 mm Depth

Code: [37-5000](#)

Product Group: [Distance Pieces](#)

Further Information

****Not available for sale in the USA****



Standard Distance Piece - 60 mm Depth

Code: [37-5020](#)

Product Group: [Distance Pieces](#)

Further Information

****Not available for sale in the USA****



Standard Distance Piece - 80 mm Depth

Code: [37-5050](#)

Product Group: [Distance Pieces](#)

Further Information

****Not available for sale in the USA****



Standard Distance Piece - 100 mm Depth

Code: [37-5100](#)

Product Group: [Distance Pieces](#)

Further Information

****Not available for sale in the USA****



6x12 Concrete Cyl. Compressometer - Digital Indicators

Code: 37-5628

Product Group: Strain Gauge, Concrete Cylinder Compressometer-Extensometer

With English/Metric reading digital indicators.

MEET ASTM C469

- Used to determine Young's Modulus and Poisson's Ratio in concrete cylinders per ASTM C469.
- Compressometers come with one dial to measure axial strain, used for Young's Modulus.
- Compressometer/Extensimeters have an extra collar and dial to also measure radial strain, used for Poisson's Ratio.

Standards

ASTM C469

Further Information

Compressometer-Extensometer with Digital Indicators for use on 6" x 12" concrete cylinders.

Specification

Sample Size.	6" diam. x 12" l. (152 x 305 mm)
Frame	Aluminum-magnesium alloy.
Contact Points.	Steel.
Control Rods.	Stainless steel.
Digital Indicators.	Two included.
Readability.	to 50 micro inches (0.00124 mm).
Weight.	Net 15 lbs. (6.8 kg).



Ball Seating Assembly 150mm Dia Platens.

Code: 37-6133

Product Group: [Flexural Testing for Beams, Flexural Frame Attachments](#)

Comprising a ball seating assembly with 150 mm diameter platen and a lower platen 150 mm diameter x 16 mm thick. Suitable for testing low-strength specimens.

Further Information

Specimen size (effective height)
Distance pieces required

40 mm
2 x 100 mm
1 x 80 mm

50 mm
2 x 100 mm
1 x 50 mm
1 x 20 mm

70.7 mm
2 x 100 mm
1 x 50 mm

100 mm
2 x 100 mm
1 x 20 mm



100kN Flexural Fitting Kit (ADR) Used for Connecting Flexural Frames to ADR Compression Machines.

Code: [37-6138](#)

Product Group: [Accessories to connect ELE compression machines to the flexural/transverse frames](#)

These flexural frames can be used with a wide range of ELE compression machines. Simply select one of two fitting kits designed to link the flexural frame to either the ADR-Auto range of compression machines or any other ADR compression machine.

Further Information

Not available for sale in the USA



100kN Flexural and Transverse (Flags) Frame. Supplied Without Specimen Bearers and Fitting Kit.

Code: 37-6140

Product Group: [Flexural and Transverse Testing](#)

- Open sided for ease of specimen loading
- Meets EN 1339, 1340 for kerbs and flagstones
- Optional ball seating assembly

This rigidly constructed, open sided frame is suitable for testing kerbs and flagstones to EN 1339,1340. With optional accessories it can also be used to test 100 mm and 150 mm section beams for flexural strength to EN 12390-5.

The frame supports a hydraulic ram and upper sub-platen assembly incorporating spherical seating. The upper and lower sub-platens will accept specimen loading bearers, which are supplied separately.

Further Information

****Not available for sale in the USA****

Specification

Dimensions (l x w x h)	840 x 845 x 1215 (mm)
Vertical clearance with bearers	170 mm
Throat clearance	330 mm
Ram travel	330 mm
Weight	460 kg



Specimen Bearer Assembly

Code: [37-6330](#)

Product Group: [Flexural and Transverse Testing](#)

EN 12390-5, 1521, 13161, 772-6. Comprising 2 self-aligning upper roller bearers, 1 self-aligning and 1 fixed lower roller bearer. Roller bearers are 38 mm dia x 320 mm long and suitable for 3- or 4-point flexural testing of beams.

Standards

EN 12390-5, 1339, 1340

Further Information

Not available for sale in the USA



Specimen Bearers for Testing Kerbs. Used on 37-6140 Flags Frame.

Code: [37-6362](#)

Product Group: [Flexural and Transverse Testing](#)

For transverse testing of kerbs to EN 1340.

Standards

BS 7263, EN 1340

Further Information

****Not available for sale in the USA****



Specimen Bearers for testing flags. Used on 37-6140 flags frame.

Code: [37-6364](#)

Product Group: [Flexural and Transverse Testing](#)

For transverse testing of flags to EN 1339.

Standards

BS 7263, EN 1339

Further Information

****Not available for sale in the USA****



Vicat Apparatus

Code: [38-2012](#)

Product Group: [Vicat Apparatus](#)

Includes Vicat needle and mould.

Standards

ASTM C91, ASTM C187, ASTM C191, AASHTO T129, AASHTO T131

Specification

Plunger	Reversible; 10 mm diam. at one end and 1 mm diam. needle at other end; combined weight 300 grams.
Needle	Steel; mounted in plunger; 1 mm diam. x 50 mm long.
Scale	Graduated in millimeters.
Mold	Hard rubber; 70 mm base diam. x 60 mm top diam. x 40 mm h.
Weight	Net 4 lbs. (1.8 kg).



EN Initial and Final Set Needle

Code: [38-2110](#)

Product Group: [Vicat Method](#)

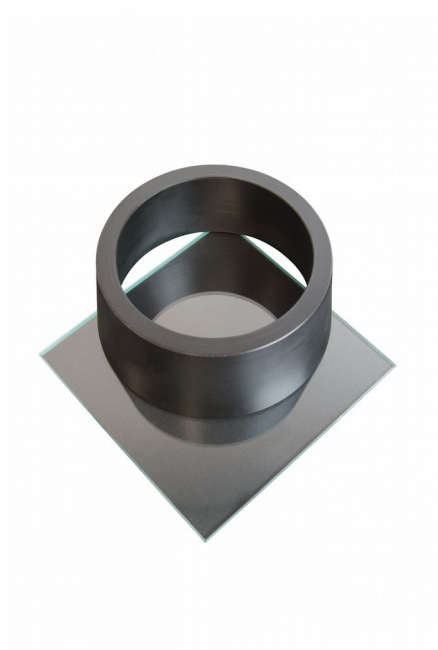
1.13mm diameter and 1.13mm diameter with special footing.

Standards

EN 196-3, EN 13454-2

Further Information

****NOT AVAILABLE FOR SALE IN THE USA****



EN Vicat Mould

Code: [38-2300](#)

Product Group: [Vicat Method, Automatic Vicat](#)

Accessory: manufactured from a hard rubber compound and supplied complete with a glass base plate.

Standards

EN 196-3

Further Information

****NOT AVAILABLE FOR SALE IN THE USA****



ASTM Initial Set Needle

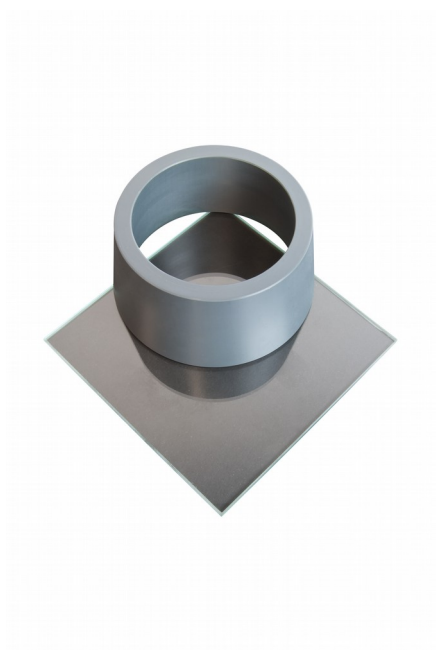
Code: [38-2620](#)

Product Group: [Vicat Apparatus](#), [Vicat Method](#)

1 mm diameter.

Standards

ASTM C187, ASTM C191



ASTM Vicat Mould

Code: [38-2660](#)

Product Group: [Vicat Apparatus](#), [Vicat Method](#),
[Automatic Vicat](#)

Accessory: manufactured from non-absorbent plastic
and supplied complete with a glass base plate.

Standards

ASTM C187, ASTM C191



225 Litre Drying Oven

Code: 78-1250/01

Product Group: Percentage Refusal Density (PRD),
Oven Drying Method, Oven Drying Method, Oven
Drying Method

Standards

EN 12697-32, EN 13280-4, BS 598-104, BS 1377

Specification

Capacity	225 litres
External Dimensions (l x w x h)	540 x 1040 x 940
Internal Dimensions (l x w x h)	440 x 920 x 600
Fluctuation	$\pm 0.75^{\circ}\text{C}$
Rated power heater elements	2000 W
Shelves supplied	3
Shelf positions	4
Weight	80 kg



Electronic Balance - 4600 g x 0.01 g

Code: [78-5456/01](#)

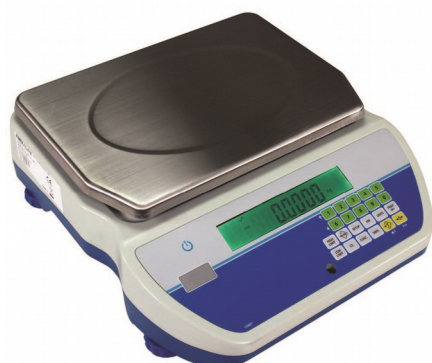
Product Group: [Electronic Balances](#)

Further Information

****Not available for sale in the USA****

Specification

Capacity resolution	4500 g x 0.01 g
Pan size	160 x 160 mm
Mains and battery	No
Dimensions (w x d x h)	220 x 310 x 90 mm
Weight	6 kg
Weighing units	g, kg, lb, lb:oz, oz, ozt, T, custom unit.
Repeatability	0.02 g
Power supply	100-240V, 50/60Hz, 1pH



Electronic Balance - 16 000 g x 0.5 g

Code: 78-5477/01

Product Group: Electronic Balances

- Backlit display changes colour for quick notification of checkweighing limits
- Colour-coded keys facilitate quick recognition of the most frequently used buttons
- Large, grade 304 stainless steel pan allows easy cleaning
- RS-232 interface is available to provide speedy connection to computers and printers
- Optional USB interface simplifies data communication
- Sealed keypad protects against dirt and spills
- Solid ABS housing is durable for industrial use
- Adjustable levelling feet help optimise setup
- Drip channels help divert spills away from the scales internal components
- Checkweighing with audible alarm
- External calibration allows for verification and adjustment with weights
- Internal counting resolution 1:600,000 for precise results
- Parts counting optimisation automatically refines piece weight as parts are added
- Parts counting with freely selectable sample sizes
- Preset tare function speeds the process of repetitive weighing
- Product look up (PLU) memory locations store a range of items for recall
- Programmable auto power-off to save energy
- Rechargeable battery included for operation almost anywhere

Applications: weighing, parts counting, checkweighing, check counting, accumulation of weight, percentage weighing and net total weighing.

Further Information

Not available for sale in the USA

Specification

Capacity resolution	16000 g x 0.5 g
Pan size	210 x 300 mm
Mains and battery	Yes
Dimensions (l x w x h)	326 x 355 x 115 mm
Net Weight	3.29 kg



200mm Dia BS Sieve 150 Mic Stainless Steel Mesh.

Code: [79-0120](#)

Product Group: [200mm Diameter BS Sieves](#), [200mm Diameter BS Sieves](#), [200mm Diameter BS Sieves](#)

Standards

BS 410-1, ISO 3310, ISO 565, EN933-2

Further Information

****NOT AVAILABLE FOR SALE IN THE USA****



200mm Dia BS Sieve 600Mic Stainless Steel Mesh.

Code: 79-0200

Product Group: 200mm Diameter BS Sieves, 200mm Diameter BS Sieves, 200mm Diameter BS Sieves

Standards

BS 410-1, ISO 3310, EN933-2

Further Information

****NOT AVAILABLE FOR SALE IN THE USA****



200mm Dia BS Sieve 1.18mm Stainless Steel Mesh.

Code: 79-0240

Product Group: 200mm Diameter BS Sieves, 200mm Diameter BS Sieves, 200mm Diameter BS Sieves

Standards

BS 410-1, ISO 3310, EN933-2, ISO 565

Further Information

****NOT AVAILABLE FOR SALE IN THE USA****



200mm Dia BS Sieve 4.75mm Stainless Steel Mesh.

Code: [79-0320](#)

Product Group: [200mm Diameter BS Sieves](#), [200mm Diameter BS Sieves](#), [200mm Diameter BS Sieves](#)

Standards

BS 410-1, ISO 3310, ISO 565, EN933-2

Further Information

****NOT AVAILABLE FOR SALE IN THE USA****



200mm Dia BS Sieve 9.50mm Perforated Plate.

Code: 79-1550

Product Group: 200mm Diameter BS Sieves, 200mm Diameter BS Sieves, 200mm Diameter BS Sieves

Standards

BS 410-1, ISO 3310, ISO 565, EN933-2

Further Information

****NOT AVAILABLE FOR SALE IN THE USA****



200mm Dia BS Sieve 12.5mm Perforated Plate.

Code: 79-1565

Product Group: 200mm Diameter BS Sieves, 200mm Diameter BS Sieves, 200mm Diameter BS Sieves

Standards

BS 410-1, ISO 3310, ISO 565, EN933-2

Further Information

****NOT AVAILABLE FOR SALE IN THE USA****



200mm Dia BS Sieve 13.2mm Perforated Plate.

Code: 79-1570

Product Group: 200mm Diameter BS Sieves, 200mm Diameter BS Sieves, 200mm Diameter BS Sieves

Standards

BS 410-1, ISO 3310, ISO 565, EN933-2

Further Information

NOT AVAILABLE FOR SALE IN THE USA



200mm Dia BS Sieve 25.0mm Perforated Plate.

Code: 79-1605

Product Group: 200mm Diameter BS Sieves, 200mm Diameter BS Sieves, 200mm Diameter BS Sieves

Standards

BS 410-1, ISO 3310

Further Information

NOT AVAILABLE FOR SALE IN THE USA



200mm Dia BS Sieve 37.5mm Perforated Plate.

Code: [79-1640](#)

Product Group: [200mm Diameter BS Sieves](#), [200mm Diameter BS Sieves](#), [200mm Diameter BS Sieves](#)

Standards

BS 410-1, ISO 3310, ISO 565, EN933-2

Further Information

****NOT AVAILABLE FOR SALE IN THE USA****



8in Dia ASTM Sieve 4.75mm Stainless Steel Mesh.

Code: 79-5020

Product Group: 8in Dia ASTM Brass Sieves, 8" Diameter ASTM Sieves, 8" Diameter ASTM Sieves, 8" Diameter ASTM Sieves

Standards

ASTM E11

Specification

Frames	Full height; 2 1/4" (51 mm) depth to mesh.
Construction	Polished and lacquered brass with S.S. mesh.
Nameplates	Show standard, alternate and Tyler Screen Scale equivalent designations.
Weights	Net 1 lb. (453 g).
Sieve Size or Number	No. 4
Sieve Opening Standard	4.75 mm
Sieve Opening Alternative (in.)	0.187



8in Dia ASTM Sieve 300 Mic Stainless Steel Mesh.

Code: 79-5180

Product Group: 8in Dia ASTM Brass Sieves, 8" Diameter ASTM Sieves, 8" Diameter ASTM Sieves, 8" Diameter ASTM Sieves

Standards

ASTM E11

Specification

Frames	Full height; 2 1/4" (51 mm) depth to mesh.
Construction	Polished and lacquered brass with S.S. mesh.
Nameplates	Show standard, alternate and Tyler Screen Scale equivalent designations.
Weights	Net 1 lb. (453 g).
Sieve Size or Number	No. 50
Sieve Opening Standard	300 um
Sieve Opening Alternative (in.)	0.0117



8 Inch Dia Lid.

Code: [79-5400](#)

Product Group: [Sieve Lids and Receivers ASTM, 8" Diameter ASTM Sieves, 8" Diameter ASTM Sieves, 8" Diameter ASTM Sieves](#)

Standards

ASTM E11



8in Dia ASTM Sieve 9.50mm Stainless Steel Mesh.

Code: 79-5510

Product Group: 8in Dia ASTM Brass Sieves, 8" Diameter ASTM Sieves, 8" Diameter ASTM Sieves, 8" Diameter ASTM Sieves

Standards

ASTM E11

Specification

Frames	Full height; 2 1/8" (51 mm) depth to mesh.
Construction	Polished and lacquered brass with S.S. mesh.
Nameplates	Show standard, alternate and Tyler Screen Scale equivalent designations.
Weights	Net 1 lb. (453 g).
Sieve Size or Number	3/8"
Sieve Opening Standard	9.5 mm
Sieve Opening Alternative (in.)	0.375



12in Dia ASTM Sieve 1.00mm Stainless Steel Mesh.

Code: 79-5910

Product Group: 12in Dia ASTM Brass Sieves, 12" Diameter ASTM Sieves, 12" Diameter ASTM Sieves, 12" Diameter ASTM Sieves

Standards

ASTM E11

Specification

Frames	Full height; 3-1/4" (82.5 mm) depth to mesh.
Construction	Polished and lacquered brass with S.S. mesh.
Nameplates	Show standard, alternate and Tyler Screen Scale equivalent designations.
Weights	Net 4 lbs. (1.8 kg).
Sieve Size or Number	No. 18
Sieve Opening Standard	1.00 mm
Sieve Opening Alternative (in.)	0.0394



ELE Sieve Shaker

Code: 80-0200/01

Product Group: ELE Sieve Shaker

The ELE sieve shaker is powered by an electromagnetic drive that has no rotating parts to wear making it maintenance free and extremely quiet in operation.

The unit features a triple Vertical-Lateral-Rotary vibrating action that moves the sample over the sieve producing faster more efficient sieving, while the rapid vertical movements also help keep the apertures from blinding.

The shaker is ideal for laboratory or on site use. It is robust, compact and sufficiently lightweight to be portable. The separate digital microprocessor controlled console unit incorporates a keypad for setting the sieving program and is isolated from any effects of vibration from the shaker.

As standard the shaker includes, timer 0-999 minutes, adjustable vibration intensity and adjustable intermittent or continuous operation.

Further Information

****NOT AVAILABLE FOR SALE IN THE USA****

The unit accepts up to ten 200 mm or 8 inch, full height, diameter sieves and lid and receiver, or up to six 300 mm or 12 inch diameter sieves and lid and receiver. Complete as specified. Dimensions (l x w x h) 380 x 440 x 1085 mm. For 220 - 240 V AC, 50 Hz 1ph.