



IF IT'S WORTH BUILDING, IT'S WORTH TESTING

This wishlist was generated on 15/07/2019, and contains the following Products:

23-4200

Proctor/Core Cutter Extruder Frame and Hydraulic Jack. Extrudes 100mm/4 Inch Diameter Specimens

23-6191/01

Bench-Mounting Mixer 5 Litre Capacity Complete with Bowl Beater and Whisk. 220-240V 50Hz 1Ph.

24-2854/01

Mechanical End-Over-End Shaker Ce

24-2885

Pyknometer Complete with Non-Corrodable Cone and Rubber Seal 1Kg Capacity

27-1300/01

DSU Electronic Readout and Control System 220 - 240 V AC 50/60 Hz

42-0600

Set of Flakiness Sieves

42-1000/01

Buoyancy Balance 6Kg X 0.1G. Supplied with Support Frame Water Tank & Suspension Hook.

42-6000

Pendulum Skid Resistance Tester

45-3810/01

Rotatest 1500

45-3810/10

Replacement bowl for Rotatest 1500 centrifuge extractor

45-6600/01

AutoComp 100-A

45-6810/01

Marshall Test 50

45-9305/01

Vacuum Pyknometer Apparatus

45-9315/01

Rice Test Vibrator

45-9315/10

6,000 gr. Vacuum Pycnometer Attachment

46-4605

BS/EN Ring and Ball Apparatus

46-4825/01

Electrical Hotplate with Integral Magnetic Stirrer

47-3025

Travelling Beam Device

78-1225/01

100 Litre Drying Oven

78-1250/01

225 Litre Drying Oven

78-3104/01

Digital Hotplate

81-0100

Spatula 100 mm

81-0120

Spatula 150 mm

81-0140

Spatula 200 mm

82-2170

Desiccator - Vacuum

82-7720/01

Vacuum Pump



Proctor/Core Cutter Extruder Frame and Hydraulic Jack. Extrudes 100mm/4 Inch Diameter Specimens

Code: 23-4200

Product Group: Soil Extruders, Accessories for manual and automatic compaction

Adaptor plates will be supplied; extrudes samples from BS Compaction Mould, Proctor Mould 100 mm, Core Cutter and Marshall Mould. Maximum extrusion force 20kn.

Standards

BS 1377-1

Further Information

NOT AVAILABLE FOR SALE IN THE USA



Bench-Mounting Mixer 5 Litre Capacity Complete with Bowl Beater and Whisk. 220-240V 50Hz 1Ph.

Code: 23-6191/01

Product Group: [Sample Mixers](#), [Mixing](#), [Sample Mixers](#)

The mixer has two electrically switched mixing speeds which obviates the need to switch off during speed selection. The mixing head comprises a beater which contra-rotates about a central shaft using planetary gearing. A lever-acting lifting device facilitates the insertion and removal of the bowl. This mixer is suitable for the mixing of soil samples, mortar, bituminous mixtures and associated materials where comparatively small samples are being prepared. Supplied with stainless steel bowl, beater and whisk.

Standards

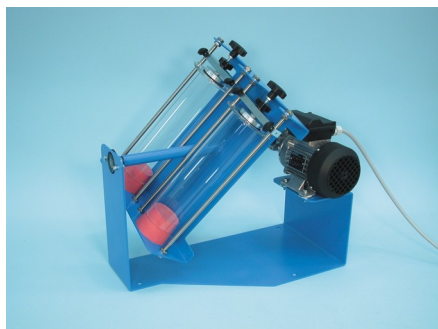
BS 598-107, BS 1377-1, BS 1924-1, EN 12697-35

Further Information

****NOT AVAILABLE FOR SALE IN THE USA****

Specification

Dimensions	545 x 380 x 550 mm
Beater Speeds (rpm) low, intermediate, high	136, 281, 580
Central shaft speeds (rpm) low, high	60, 124, 255
Rated power	500 W
Weight	24 kg



Mechanical End-Over-End Shaker Ce

Code: [24-2854/01](#)

Product Group: [Gas Jar Method](#)

With Friction Safety Device and Control Panel
220-240V 50/60 Hz 1Ph.

Fitted with friction safety device, capable of rotating two EL24-2830 Gas Jars at approximately 50 rpm to satisfy BS 1377.

Standards

BS 1377, EN 1997-2



Pyknometer Complete with Non-Corrodable Cone and Rubber Seal 1Kg Capacity

Code: [24-2885](#)

Product Group: [Particle Density: Pyknometer
Methods, Pycnometer Top and Jar](#)

Glass jar complete with noncorrodible cone.

Standards

BS 1377, BS 812-2, EN 1097-7, EN 1997-2, ASTM D854, AASHTO T100, ASTM C128, AASHTO T84



DSU Electronic Readout and Control System 220 - 240 V AC 50/60 Hz

Code: [27-1300/01](#)

Product Group: [Data Logging with the DSU](#), [Electronic Instrumentation](#), [Electronic Instrumentation](#), [Automatic Data Acquisition - CBR](#), [Data Logging with the DSU](#)

· Download the full brochure here
[[/Page/catalogue-download/NTRmZS9UaGUgTkVXIERTVSBVU0EucGRm](#)]

- 4 channel automatic control and data-logging unit
- Automatic, dual-frame control
- Performs CBR, Marshall, Unconfined Compression, Direct and Residual Shear, One-Dimensional Consolidation and Unconsolidated Undrained tests
- LAN connection - software can be running anywhere on your server
- Never lose data from power fails - 2 gigabytes of non-volatile memory
- Extended warranty

The Data System Unit (DSU) is a versatile instrument designed to accommodate the general logging requirements of geotechnical and materials testing engineers. Its intelligent interface allows the user to work with a range of different sensors.

Further Information

The DSU has two distinct modes of operation. The first is referred to as DS mode (DataSystem) for operation with ELE International's established DS7 geotechnical testing software.

DS MODE

- Up to four one dimensional consolidation tests
- Up to two CBR tests
- One direct/residual shear test
- One triaxial quick un-drained test

DU MODE

- Up to two Marshall tests
- Up to two CBR tests
- Up to two Unconfined compression tests
- Automatic frame control

OVERVIEW

- Touch Screen data entry for standalone operation, Marshall/CBR/Quick un-drained
- Automatic single and dual frame control (with multiplex 50 frame)
- Log memory of 2 gigabytes
- Non-volatile memory
- Ethernet TCP/IP link and serial comms support
- Market leading signal stability
- Certificate and manual calibration features

Become a member of the ELE International web site, add this new product to a wishlist to receive a quote! Click here [\[Login\]](#)

This product is now available in the USA and Canada!



Set of Flakiness Sieves

Code: [42-0600](#)

Product Group: [Flakiness Sieves and Gauges](#)

Comprising 1 each of, 4.9 mm, 7.2 mm, 10.2 mm, 14.4 mm, 19.7 mm, 26.3 mm and 33.9 mm

Standard BS 813

Standards

BS 813

Further Information

****NOT AVAILABLE FOR SALE IN THE USA****



Buoyancy Balance 6Kg X 0.1G. Supplied with Support Frame Water Tank & Suspension Hook.

Code: [42-1000/01](#)

Product Group: [Particle Density \(specific gravity\) and Water Absorption for Coarse Aggregates](#)

The buoyancy balance system developed by ELE consists of a rigid support frame, incorporating a water tank mounted on a platform. A mechanical lifting device is used to raise the water tank through the frame height immersing the specimen suspended below the balance. The balance supplied may also be used as a standard weighing device, thus providing a versatile and comprehensive weighing system in the laboratory. 6000 g x 0.1 g supplied with frame, water tank and suspension hook.

Standards

EN 1097-6, EN 12697-6, BS 812, ASTM C127, AASHTO T85

Further Information

****NOT AVAILABLE FOR SALE IN THE USA****

For 220 - 240 V AC, 50 - 60 Hz, 1 ph.



Pendulum Skid Resistance Tester

Code: 42-6000

Product Group: [Skid Resistance Testing](#), [Skid Resistance Testing](#)

The Pendulum Skid Resistance Tester was originally designed in the 1940s in the USA and further developed in the 1960s at the TRL (Transport Research Laboratory) for the testing of road surfaces.

The device measures the frictional resistance between a rubber slider mounted on the end of a pendulum arm and the surface to be tested. This provides road engineers with a method of checking the resistance of wet and dry surfaces to slipping and skidding, both in the lab and in situ.

It operates by a pendulum rotating about a spindle which is attached to a vertical pillar. At the end of the tubular arm, a head of known mass is fitted with a rubber slider. The pendulum is released from a horizontal position so that it strikes the sample surface at a constant speed. The distance travelled by the head after hitting the sample is determined by the friction of the sample surface.

Standards

EN 1097-8:2009, EN 1436:1997, EN 13036-4:2003, ASTM E303-93, BS 812 Pt 114, BS 6077 Pt 1, BS 7044, BS 7188, BS 8204, BS 7976

Further Information

Applications:

- Assessment of surface friction and skid resistance properties
- Testing of aggregates in the PSV (Polished Stone Value) test
- Testing of new road surface materials
- Testing of pedestrian pavements
- RTA (road traffic accidents)
- Litigation investigations

Features:

- Designed for lab and on site road surface testing
- Factory calibrated to EN1097-8
- Low friction arm, and lightweight pointer
- Supplied with 'F' scale for use with small slider set for 76mm slide length (PSV test)
- Highly repeatable
- Supplied with carrying case

Specification

Dimensions (WxDxH)	695 x 295 x 695 mm
Volume	0.15m ³
Weight	30 kg



Rotatest 1500

Code: 45-3810/01

Product Group: Asphalt Centrifuge Extractors

Centrifuge extractor used to determine the quantitative amount of bitumen in bituminous paving mixtures. Variable speed control from 0 to 3600 rpm through the front panel mounted control knob and brake control included for rapid deceleration.

Precision machined aluminium removable cover with integral cup for adding solvent, with sealed cast aluminium housing. Centrifuge extractor used to determine the quantitative amount of bitumen in bituminous paving mixtures. Variable speed control from 0 to 3600 rpm through the front panel mounted control knob and brake control included for rapid deceleration.

Precision machined aluminium removable cover with integral cup for adding solvent, with sealed cast aluminium housing.

Standards

EN 12697-1, ASTM D2172, AASHTO T164

Further Information

****NOT AVAILABLE FOR SALE IN THE USA****

1500 g capacity. Supplied with 100 Filter Discs. For 220 V AC, 50 - 60 Hz, 1ph.



Replacement bowl for Rotatest 1500 centrifuge extractor

Code: [45-3810/10](#)

Product Group: [Asphalt Centrifuge Extractors](#)

Holds 1500 g

Standards

EN 12697-1, ASTM D2172, AASHTO T164

Further Information

****NOT AVAILABLE FOR SALE IN THE USA****



AutoComp 100-A

Code: 45-6600/01

Product Group: Automatic Compaction

Fully automatic, simple to operate
Built-in safety features
Uniform compaction
Automatic blow counter

Complies to BS 598-107

This ruggedly constructed automatic compactor provides a consistent and even degree of compaction. The unit incorporates a compaction pedestal comprising a laminated hardwood block secured to a concrete base by a 300 mm square x 25 mm thick steel plate. The mechanism lifts the 4535 g hammer and automatically releases it at the specified height of 457 mm. The conveniently positioned control fascia panel comprises of a mains light, start and stop buttons and a direct-reading counter used to set the required number of blows.

During operation the AutoComp 100-A automatically counts down to zero. Dual rammer pick-ups have been incorporated, reducing stress on the machine's internal mechanism. Particular attention has been paid to operator safety by the inclusion of various in-built safety features.

Standards

EN 12697-10, EN 12697-30, BS 598

Further Information

****NOT AVAILABLE FOR SALE IN THE USA****

Specification

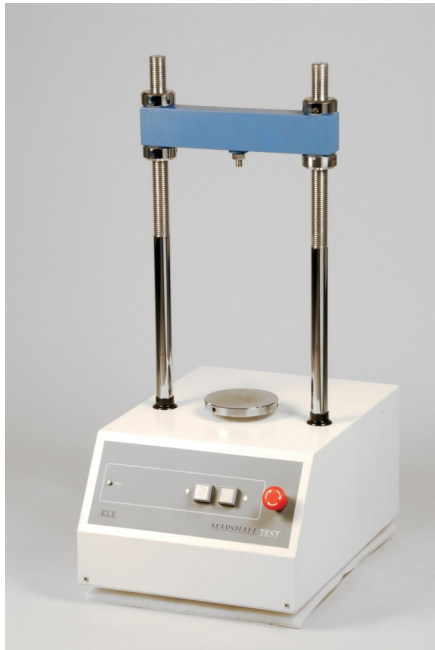
Dimensions (l x w x h)	535 x 535 x 1880 mm
Compaction foot diameter	98.52 mm

Product Sheet

www.ele.com
+44 (0) 01525 249 200



Sliding weight	4535 g
Height of drop	457 mm
Weight	278 kg



Marshall Test 50

Code: [45-6810/01](#)

Product Group: [Marshall Load Frames](#)

- Geared screwjack and motor drive
- Precise speed
- Internal limit switch for both directions of travel
- Easy to use controls

This bench-mounting mechanical load frame is ruggedly constructed to encompass the strain and loads involved with the test. The unit is compact in size and can be quickly installed on a bench top, requiring only a power point. It has been designed for simple operation, is easy to clean and requires minimum maintenance.

Standards

EN 12697-34

Further Information

****NOT AVAILABLE FOR SALE IN THE USA****

Load frame, 50 kN capacity. Supplied without Breaking Head. For 220 - 240 V AC, 50 Hz, 1 ph.



Vacuum Pyknometer Apparatus

Code: 45-9305/01

Product Group: Vacuum Pyknometer

- Large capacity design minimises segregation effects
- Lightweight polycarbonate construction
- Transparent top for visual observations

The Vacuum Pyknometer is a large capacity unit used in the Rice Test for determining the maximum specific gravity of bituminous paving mixtures.

The Pyknometer has a total volume of approximately 10 litres and will conveniently accept samples of 6000 grams to minimise segregation effects. The unit is constructed of lightweight polycarbonate, with the upper half being transparent for visual observation of the effects of the vacuum.

The Vacuum Pyknometer Apparatus consists of a 6000 g pyknometer, vacuum pump with control valves/gauges, water trap and connection tubing.

Standards

EN 12697-5

Further Information

****NOT AVAILABLE FOR SALE IN THE USA****

Supplied complete with 6000 g pyknometer, vacuum pump with control valves/gauges, water trap and connection tubing. For 220 - 240 V AC, 50 Hz, 1ph.

Specification

Dimensions	273 x 406 mm (outside diameter x height)
Capacity	Approx. 10 litres, 6000 g sample weight
Connections	Water inlet valve; quick disconnect for vacuum gauge and hose
Weight	3.6 kg



Rice Test Vibrator

Code: [45-9315/01](#)

Product Group: [Rice Test Vibrator](#), [Rice Test Vibrator](#)

The Rice Test Vibrator is used with the 45-9300 6000 g Vacuum Pyknometer. Adjustable clamps hold the pyknometer securely to the base during vibration.

Standards

EN 12697-5, ASTM D2041, AASHTO T209

Further Information

For 220 - 240 V AC, 50 Hz, 1ph.

Specification

Dimensions	495 x 30 mm (height x base diameter)
Motor	1/20 hp, 1.6 amp
Weight	5.5 kg
Motor	1/20 h.p.; 3000 vpm; 1.6 amp.
Dimensions	19-1/2" (495 mm) h.; 12 " (30 mm) base diameter.
Weight	Net 14.3 lbs. (6.5 kg).



6,000 gr. Vacuum Pycnometer Attachment

Code: [45-9315/10](#)

Product Group: [Rice Test Vibrator](#), [Rice Test Vibrator](#),
[Specific Gravity \(Rice\) Test with 6,000 gram Vacuum Pycnometer](#)

Attachment required to mount 6,000 gr. Vacuum Pycnometer onto Rice Test Vibrator.

Standards

EN 12697-5



BS/EN Ring and Ball Apparatus

Code: [46-4605](#)

Product Group: [Ring and Ball Apparatus](#)

With 2 shouldered pattern rings, 2 ball-centring guides and 2 balls. The apparatus has a support frame and is retained in a heat resistant container.

Standards

EN 1427, BS 2000-58, UNI 4161, UNE 7111, DIN 52011, NFT66-008, AASHTO T53, ASTM D36, BS 2000

Further Information

****NOT AVAILABLE FOR SALE IN THE USA****



Electrical Hotplate with Integral Magnetic Stirrer

Code: [46-4825/01](#)

Product Group: [Ring and Ball Apparatus](#)

Circular-top analogue magnetic hotplate stirrer.

Speed controls for constant speed (even during load changes).

Anti-corrosive ceramic steel plate with excellent thermal conductivity.

Long life brushless motor.

High magnetic adhesion.

CE marked.

Standards

EN 1427, BS 2000-58

Further Information

****NOT AVAILABLE FOR SALE IN THE USA****

Specification

Temperature range	Ambient-340 Deg.C
Stirring speed	0-1500 rpm
Max. Viscosity	40 cP/ mPas
Heating rate (1 litre water)	6K/min
Motor type	Brushless
Stirring capacity	20L
Plate diameter	5.3"
Plate material	Ceramic coated steel
Dimensions	11"L x 6 1/4"W x 3"H
Weight	6lbs



Travelling Beam Device

Code: 47-3025

Product Group: Travelling Beam Device

Travelling Beam Device with Autographic Recorder
Supplied Without Recorder Charts.

The 3 metre long Travelling Beam Device is used to check for any irregularities in both concrete and bituminous road surfaces. A sensing unit comprising a wheel connected to an indicator provides a magnification of 4:1.

Deviation of the surface from a straight-line is shown on a scale calibrated in increments of 2 mm up to 10 mm and 5 mm up to 25 mm. A dye-marker is fitted which may be used to identify suspect areas. Outrigger wheels provide mobility on site. The device is supplied as three sub-assemblies which are quickly assembled on site. The Travelling Beam is supplied fitted with an autographic recorder providing a permanent record of the surface profile. Records up to 1 kilometre can be recorded on the special chart paper rolls used.

Standards

EN 12697-32, EN 13280-4, BS 598-104

Further Information

****NOT AVAILABLE FOR SALE IN THE USA****



100 Litre Drying Oven

Code: [78-1225/01](#)

Product Group: [Oven Drying Method](#), [Oven Drying Method](#), [Oven Drying Method](#)

Standards

BS 2648, BS 598, BS 1377, BS 1924

Further Information

****NOT AVAILABLE FOR SALE IN THE USA****



225 Litre Drying Oven

Code: 78-1250/01

Product Group: Percentage Refusal Density (PRD),
Oven Drying Method, Oven Drying Method, Oven
Drying Method

Standards

EN 12697-32, EN 13280-4, BS 598-104, BS 1377

Specification

Capacity	225 litres
External Dimensions (l x w x h)	540 x 1040 x 940
Internal Dimensions (l x w x h)	440 x 920 x 600
Fluctuation	± 0.75°C
Rated power heater elements	2000 W
Shelves supplied	3
Shelf positions	4
Weight	80 kg



Digital Hotplate

Code: 78-3104/01

Product Group: Digital Hotplate

Further Information

****Not available for sale in the USA****

Specification

Dimensions	520 x 360 x 130 mm
Construction	Robust metal with anodised aluminium plate heated surface
Maximum temperature	300 x 1°C
Rated power	1500 W



Spatula 100 mm

Code: [81-0100](#)

Product Group: [Spatulas](#)

Further Information

****NOT AVAILABLE FOR SALE IN THE USA****



Spatula 150 mm

Code: [81-0120](#)

Product Group: [Spatulas](#)

Further Information

****NOT AVAILABLE FOR SALE IN THE USA****



Spatula 200 mm

Code: [81-0140](#)

Product Group: [Determination of Plastic Limit, Spatulas](#)

Further Information

****NOT AVAILABLE FOR SALE IN THE USA****



Desiccator - Vacuum

Code: [82-2170](#)

Product Group: [Desiccators](#)

280 mm internal diameter, soda glass. Supplied with perforated zinc disc and stopcock.

Further Information

****NOT AVAILABLE FOR SALE IN THE USA****



Vacuum Pump

Code: [82-7720/01](#)

Product Group: [Vacuum Pumps](#)

Further Information

****NOT AVAILABLE FOR SALE IN THE USA****

Specification

Type	Single stage
Pump	Oil filled rotary
Ultimate vacuum	Better than 0.1 mbar
Displacement	42 litres per minute (2.4 m ³ /hour)
Electrical supply	220 – 240 V AC, 50 - 60 Hz, 1 ph
Weight	12.7 kg