



IF IT'S WORTH BUILDING, IT'S WORTH TESTING

# Contents

www.ele.com  
+44 (0) 01525 249 200



This wishlist was generated on 06/08/2019, and contains the following Products:

25-0408

**Set of Weights 100Kg Total Weight.**

29-3925

**Proctor Penetrometer Spring Type with Adaptor Stem.**

34-0130

**Tamping Rod 16mm Dia X 600mm long hemispherical at both ends.**

34-0160

**Base Plate for Slump Test.**

34-0192

**Slump Test Set BS & ASTM. C/W Slump Cone Base Plate Steel Rule Tamping Rod & Funnel.**

34-0300/01

**Vibro Consistometer**

34-0580

**K-slump Tester**

34-0610

**J-Ring**

34-0810

**Set of Needle Points 1 1/2 1/4 1/10 1/20 1/40 Inch Sq.**

34-2910

**Compacting Bar 25mm Sq X 380mm**

34-3540/01

**Concrete Mixer 56/40 Litre Capacity.**

34-3590/01

**Tilting Drum Concrete Mixer 120/90L/ (4/3Cu.Ft) Complete with Stand**

34-4570

**150mm Cube Mould 4-Part Clamp Type. Cast Iron Construction. BS EN Compliant.**

34-5003

## 100 X 100 X 500mm Beam Mould.

---

34-5210

### 100mm Dia Cylinder Mould 200mm Long.

---

34-5230

### 150mm Dia Cylinder Mould 150mm Long.

---

34-5260

### 150mm Dia Cylinder Mould 300mm Long.

---

35-1480

### Standard Concrete Test Hammer

---

35-1530

### Testing Anvil

---

35-2302/09

### Ultrasonic Concrete Tester 110-240V 50/60Hz 1Ph

---

36-5125/01

### ADR Touch Control PRO 2000 Auto Compression Machine

---

36-5150/01

### ADR Touch Control PRO 2000 Auto BS EN Compression Machine

---

37-5000

### Standard Distance Piece - 50 mm Depth

---

37-5050

### Standard Distance Piece - 80 mm Depth

---

37-5100

### Standard Distance Piece - 100 mm Depth

---

37-5450

### Test Pieces EN 12390-6 Pack of 100 Hardboard.

---

37-6130

### 100kN Flexural (Beams) Frame. Supplied Without Specimen Bearers and Fitting Kit.

---

37-6132

## ASTM C78 Specimen Bearer Assembly Case-Hardened 38mm Dia X 160mm Length.

---

37-6135/01

### 100 kN Flexural Fitting Kit ADR Auto for 220 - 240 V AC, 50 Hz, 1 ph

---

38-0620

### Pure Mineral Oil 1 Litre Bottle.

---

38-0645

### Reference Cement

---

38-0650

### Filter Papers

---

38-1000

### Blaine Air Permeability Apparatus

---

38-1200

### Le Chatelier Flask

---

38-2010

### Vicat Frame

---

38-2110

### EN Initial and Final Set Needle

---

38-2200

### Vicat Mould

---

38-2695

### Pocket Concrete Penetrometer

---

39-0045/01

### Mortar Mixer Digital 5L Capacity 220-240V 50Hz 1ph

---

39-0060

### Bowl Cover

---

39-0065

### Scraper

---

39-0100

### 70.7 mm Cube Mould

---

---

39-1100

**Three-gang Mould**

---

39-1100/10

**Glass Plate**

---

39-1150/01

**Jolting Table 220 - 240 V 50 Hz**

---

39-7170/01

**ADR Touch Control PRO 250 Cement Machine (jig only) 220-240v 50Hz**

---

42-0410

**Flakiness Gauge.**

---

42-0600

**Set of Flakiness Sieves**

---

42-0820

**Length Gauge**

---

42-0821

**3.1 Shape Index Caliper.**

---

42-4300

**150mm Aggregate Crushing Value Apparatus. Supplied Complete with Metal Measure and Tamping Rod.**

---

42-4580

**Tamping Rod 8mm Dia X 300mm.**

---

45-9300

**Vacuum Pycnometer, 6000 g**

---

45-9315/01

**Rice Test Vibrator**

---

45-9315/10

**6,000 gr. Vacuum Pycnometer Attachment**

---

78-1250/01

**225 Litre Drying Oven**

---

78-5447/01

**Electronic Balance - 3600g x 0.01g**

---

78-5527/01

**Electronic Balance - 32 000 g x 1.0 g**

---

78-7110

**Weights for Harvard Trip Balance**

---

79-2280

**300mm Dia BS Sieve 2.36mm Stainless Steel Mesh.**

---

79-2525

**300mm Dia BS Sieve 6.30mm Perforated Plate.**

---

79-2555

**300mm Dia BS Sieve 10.0mm Perforated Plate.**

---

79-2565

**300mm Dia BS Sieve 12.5mm Perforated Plate**

---

79-2575

**300mm Dia BS Sieve 14.0mm Perforated Plate.**

---

79-2580

**300mm Dia BS Sieve 16.0mm Perforated Plate.**

---

79-2605

**300mm Dia BS Sieve 25.0mm Perforated Plate.**

---

79-2645

**300mm Dia BS Sieve 40.0mm Perforated Plate**

---

79-2655

**300mm Dia BS Sieve 50.0mm Perforated Plate.**

---

79-2670

**300mm Dia BS Sieve 63.0mm Perforated Plate.**

---

81-0140

**Spatula 200 mm**

---

81-0310

**Trowel - Gardeners type**

---

---

81-0335

**Trowel - Gauging**

---

81-0521

**Stopwatch**

---

81-4160

**Sample Tray - 910 x 910 x 76 mm**

---

82-0200

**Beaker - 600 ml**

---

82-0380

**Measuring Cylinder - Glass 100 ml**

---

82-0420

**Measuring Cylinder - Glass 250 ml**

---

82-0460

**Measuring Cylinder - Glass 500 ml**

---

82-0500

**Measuring Cylinder - Glass 1000 ml**

---

82-2820

**Syringe with Rubber Bulb.**

---

82-3320

**Porcelain Crucible**

---

82-8020/01

**Distilled Water Still**

---



## Set of Weights 100Kg Total Weight.

Code: [25-0408](#)

Product Group: [Consolidation Apparatus](#)

9 x 10 kg, 1 x 5 kg, 2 x 2 kg, 1 x 1 kg.

## Standards

ASTM D2435, ASTM D4546, AASHTO T216, ASTM D3877, BS 1377-5





## Proctor Penetrometer Spring Type with Adaptor Stem.

Code: [29-3925](#)

Product Group: [Proctor Penetrometer, Setting Time by Penetration Resistance](#)

Supplied complete with set of needles, 29-3929

## Standards

ASTM D1558

## Further Information

**\*\*NOT AVAILABLE FOR SALE IN THE USA\*\***



## **Tamping Rod 16mm Dia X 600mm long hemispherical at both ends.**

Code: [34-0130](#)

Product Group: [Precision Air Entrainment Meter, Slump Test, Accessories for Concrete Moulds](#)

Steel, 600 mm long x 16 mm dia, hemispherical at both ends.

Please note this item is not graduated.

## **Further Information**

**\*\*NOT AVAILABLE FOR SALE IN THE USA\*\***



## Base Plate for Slump Test.

Code: [34-0160](#)

Product Group: [Slump Test](#)

## Further Information

**\*\*NOT AVAILABLE FOR SALE IN THE USA\*\***



## Slump Test Set BS & ASTM. C/W Slump Cone Base Plate Steel Rule Tamping Rod & Funnel.

Code: [34-0192](#)

Product Group: [Slump Test](#)

BS and ASTM comprising of slump cone, base plate, steel rule, tamping rod and funnel.

### Further Information

**\*\*NOT AVAILABLE FOR SALE IN THE USA\*\***



## Vibro Consistometer

Code: [34-0300/01](#)

Product Group: [Vebe Time](#)

Comprising of vibrating table, container, slump cone, graduated rod and plate. For 220 - 240 V AC, 50 Hz, 1 ph.

## Further Information

**\*\*NOT AVAILABLE FOR SALE IN THE USA\*\***



## K-slump Tester

Code: [34-0580](#)

Product Group: [K-Slump Tester](#), [K-Slump Tester](#)

Developed to determine the workability of fresh concrete and the degree of concrete compaction placed in formwork. The apparatus can be used for in-place measurements of concrete in test moulds and forms and may be correlated to the standard slump test. It is simple, economical to use and reduces testing time. No special calibration is required.

## Specification

Construction

Nickel Plated Steel. Calibrated 3/4" (19 mm) diam. Hollow tube; pointed insertion end; round disc controls depth of penetration.

Openings

Two groups through which concrete enters.

Test time

60 seconds

Weight

450 g



## J-Ring

Code: [34-0610](#)

Product Group: [Concrete Mixture Pre-Qualification](#)

This test has been designed to determine the passing ability (flow-ability) of SCC concrete. Our test set includes a J-Ring fabricated in Zinc Plated steel for rust resistance and a Base Plate made of stainless steel for durability. The base plate includes a return bend lip for easy carrying and includes three concentric circles etched on the base plate to centre the ring.

ASTM C1621/C1621M



## Set of Needle Points 1 1/2 1/4 1/10 1/20 1/40 Inch Sq.

Code: [34-0810](#)

Product Group: [Setting Time by Penetration Resistance](#)

Stainless steel, 1, 1/2, 1/4, 1/10, 1/20 and 1/40 in<sup>2</sup> area (645, 323, 161, 65, 32 and 16 mm<sup>2</sup>) with stainless steel adaptor for the smaller needles.

### Further Information

**\*\*NOT AVAILABLE FOR SALE IN THE USA\*\***





## Compacting Bar 25mm Sq X 380mm

Code: [34-2910](#)

Product Group: [Accessories for Concrete Moulds,](#)  
[Precision Air Entrainment Meter](#)

Steel, 380 x 25 mm (length x square) tamping area,  
EN/BS.

## Standards

EN 12390-1



## Concrete Mixer 56/40 Litre Capacity.

Code: 34-3540/01

Product Group: ELE Concrete Mixer

- Portable and compact
- Tipping mechanism
- Adjustable blades
- Simple to clean and maintain

It is essential that the mixing of fresh concrete for laboratory test samples is thorough and consistent. The ELE Concrete Mixer is ideally suited for this purpose.

The mixer has been developed to give efficient mixing of both wet and dry materials. The mixing pan is removable and tilts for easy access to the pan and emptying on completion of the mixing operation. It is rotated by a turntable driven by a 1500 W, IP55 protected electric motor.

The mixer head lifts clear to provide maximum access to the pan and holds the mixing blades at a constant depth during the mixing operation. The blades are readily adjusted to suit the different types and volume of materials to be mixed.

## Further Information

**\*\*NOT AVAILABLE FOR SALE IN THE USA\*\***

220 - 240 V AC, 50 Hz, 1 ph.

Dimensions: 950 x 1050 x 1250 (mm)

Weight (Approx.) 255 kg

Power: 1500 W



## **Tilting Drum Concrete Mixer 120/90L/ (4/3Cu.Ft) Complete with Stand**

Code: [34-3590/01](#)

Product Group: [Tilting Drum Mixer](#)

120/90 litre mixing capacity. For 220 - 240 V AC, 50 Hz, 1 ph.

## **Standards**

EN 12390-2

## **Further Information**

**\*\*NOT AVAILABLE FOR SALE IN THE USA\*\***



## 150mm Cube Mould 4-Part Clamp Type. Cast Iron Construction. BS EN Compliant.

Code: [34-4570](#)

Product Group: [Cube Moulds](#), [Cube Moulds](#)

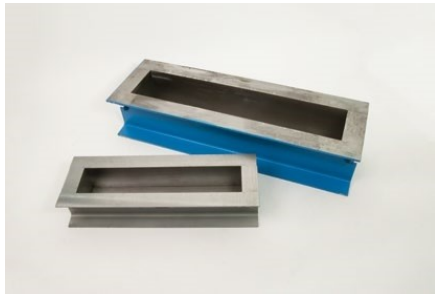
4-part with clamp attached base plate.

## Standards

BS 1881-108, EN 12390-1, EN 12390-2

## Specification

Construction	Bolted sides and clamped base plate
Finish	Painted
Weight	42 lb (19.1 kg)



## 100 X 100 X 500mm Beam Mould.

Code: [34-5003](#)

Product Group: [Beam Moulds](#)

Complete with base plate

Weight 17 kg

## Further Information

**\*\*NOT AVAILABLE FOR SALE IN THE USA\*\***



## 100mm Dia Cylinder Mould 200mm Long.

Code: [34-5210](#)

Product Group: [Cylinder Moulds](#)

100 mm diameter x 200 mm long, complete with base plate.

## Standards

EN 12390-1, EN 12390-2

## Further Information

**\*\*NOT AVAILABLE FOR SALE IN THE USA\*\***



## 150mm Dia Cylinder Mould 150mm Long.

Code: [34-5230](#)

Product Group: [Cylinder Moulds](#)

150 mm diameter x 150 mm long, complete with base plate.

## Standards

EN 12390-1, EN 12390-2

## Further Information

**\*\*NOT AVAILABLE FOR SALE IN THE USA\*\***



## 150mm Dia Cylinder Mould 300mm Long.

Code: [34-5260](#)

Product Group: [Cylinder Moulds](#)

150 mm diameter x 300 mm long, complete with base plate and locking ring.

## Standards

EN 12390-1, EN 12390-2

## Further Information

**\*\*NOT AVAILABLE FOR SALE IN THE USA\*\***





## Standard Concrete Test Hammer

Code: [35-1480](#)

Product Group: [Concrete Test Hammer, Surface Hardness](#)

The hammer is intended for testing the quality of concrete in finished structures such as buildings and bridges. Supplied complete with carrying case and carborundum stone, the hammer is suitable for testing concrete with compressive strengths of 10 to 70 N/mm<sup>2</sup>.

## Standards

ASTM C805

## Specification

Body	Includes indicator scale, calibration curves.
Calibration Curves	Rebound number vs. compressive strength.
Rubbing Stone	Prepares test surface.
Accuracy	Within 15 %.
Carrying Case	Plastic.
Weight	Net 3 lbs. (1.4 kg).



## Testing Anvil

Code: [35-1530](#)

Product Group: [Concrete Test Hammer](#), [Surface Hardness](#), [Testing Anvil](#)

## Standards

ASTM C805



## Ultrasonic Concrete Tester 110-240V 50/60Hz 1Ph

Code: 35-2302/09

Product Group: Ultrasonic Detection, Ultrasonic  
Concrete Test

35-2302/09 is the most versatile Concrete Tester to date. It has all the functions of the classic Concrete Tester, but offers additional benefits.

Designed with laboratory use in mind, its compact size, rugged construction and optimized power consumption make it equally suitable for on-site use.

Along with the traditional transit time and pulse velocity measurement, 35-2302/09 offers path length measurement, perpendicular crack depth measurement and surface velocity measurement.

Optimized pulse shaping gives greater transmission range at lower voltage levels. This coupled with automated combination of the transmitter voltage and the receiver gain ensures an optimum received signal level, ensuring accurate and stable measurements.

The waveform can be viewed either via an external oscilloscope connection or directly on a connected PC screen.

Full remote control capability completes the package.

Complete with two 54 kHz transducers each with 3.6 metres of cable, coupling agent, carrying case and instruction manual.

Applications include pulse velocity determination, quality assessment and uniformity, modulus of elasticity measurement, curing status evaluation, crack depth estimation, assessment of fibre reinforced concrete.

Consists of display unit, 2 transducers (54 kHz), 2 BNC cables 1.5m, couplant, calibration rod, USB charger with USB-cable, 4x AA (LR6) batteries, data carrier with software, documentation and carrying case.

## Standards

BS 1881-203, EN 12504-4, ASTM C597, D2845

## Further Information

For 110 - 240 V AC, 50 - 60 Hz, 1 ph.

## Specification

Measuring range	Up to 15 m depending on concrete quality
Bandwidth	20 to 500 kHz
Technology	Ultrasonic pulse velocity
Measuring resolution	0.1 us
Pulse voltage UPV	125 to 500 V
Receiver gain	1x, 10x, 100x, auto
Pulse shape	Square wave
Nominal transducer frequency	24-500 kHz
Number of channels	1



## ADR Touch Control PRO 2000 Auto Compression Machine

Code: 36-5125/01

Product Group: General Purpose Compression Machines

The ADR Touch Control PRO is supplied complete with safety gates ready for testing 300 x 150 mm diameter cylinders. When used for cube testing distance pieces of the appropriate size must be ordered separately.

### Further Information

**\*\*Not available for sale in the USA\*\***

The ADR Touch Control PRO will deliver all the features and quality of the established ADR-Auto range, with its 20 year history, but with a new sleek design and additional capabilities. The console assembly consists of an ADR Touch Control PRO and power base which can be used with all existing concrete and cement frames

### USER INTERFACE

The new ADR Touch Control PRO has an improved user interface providing a high quality platform for testing that will enhance the performance of our compression machines. It now has a larger 7-inch colour touch screen with a higher definition display, allowing easier observation of test progress. A favourites option is also available, allowing users to save the most common set-ups for immediate access, without the need for navigating through selection menus.

### USER FLEXIBILITY

The ADR Touch Control PRO has a unique flexible head with rotation capabilities of 75-degrees and a 45-degree tilt, improving usability and comfort for individual users. It is available with four languages English, Spanish, Portuguese and French, making it even more user-friendly and accessible to a wider audience. The new LAN connectivity feature lets the operator use the PC based APP (ELE Logger) to download test results away from the test area. User flexibility has also increased with the new ADR Touch Control PRO as it can now be operated remotely, so tests can be initiated away from the test area. Many issues can be resolved quickly by our service team through the new remote diagnostics feature and updating to the latest version of software has never been easier.

### COMPATIBILITY

The all new dual sensor capabilities allow users to test both concrete and cement samples on one frame. The ADR Touch Control PRO is compatible with all existing compression frames and upgrade kits are also available. The upgrade kits can be used to convert existing ADR-Auto consoles to the new Automatic Digital Control Readout.

### TESTING TIMES

The new generation ADR Compression Machines have an increased control over the pace rate, which allows users to run the pace rate higher than average, but still within standard. This produces an average time saving of 10% for a typical 150mm cube sample.

### ELECTRICAL

Reduced component count and no wire design results in increased reliability and serviceability. New low voltage interlocks and e-stop has increased safety. The ADR Touch Control Pro has the latest Arm Core Processor technology which has improved the processing power and speed.

---

## Specification

Capacity	2000 kN
Cubes (Concrete)	Up to 200 mm
Cylinders (Concrete)	Up to 160 x 320 mm
Blocks	n/a
TFV and ACV	Yes
Voltage Supply	220-240 V 50 Hz 1 Ph
Frame Type	Welded
Max vert. Clearance	340 (360 without 20 mm Ram Spacer)
Max hor. Clearance	320 mm
Platen Sizes	Lower , Upper 222 mm
Overall Dimensions	450 x 780 x 1225 mm



## ADR Touch Control PRO 2000 Auto BS EN Compression Machine

Code: [36-5150/01](#)

Product Group: [BS EN Compression Machines](#)

The ADR Touch Control PRO 2000 Auto BS EN is supplied complete with self-centring lower platen and safety gates fitted with interlock switches ready for testing 320 x 160 mm diameter cylinders. When used for cube testing distance pieces (EN) of the appropriate size must be ordered separately.

### Standards

EN 12350-6, NF P18-411, EN 12390-4, EN 12390-3, EN 772-1, BS EN ISO 7500-1, ASTM E4

### Further Information

**\*\*Not available for sale in the USA\*\***

The ADR Touch Control PRO will deliver all the features and quality of the established ADR-Auto range, with its 20 year history, but with a new sleek design and additional capabilities. The console assembly consists of an ADR Touch Control Pro and power base which can be used with all existing concrete and cement frames

#### USER INTERFACE

The new ADR Touch Control PRO has an improved user interface providing a high quality platform for testing that will enhance the performance of our compression machines. It now has a larger 7-inch colour touch screen with a higher definition display, allowing easier observation of test progress. A favourites option is also available, allowing users to save the most common set-ups for immediate access, without the need for navigating through selection menus.

#### USER FLEXIBILITY

The ADR Touch Control PRO has a unique flexible head with rotation capabilities of 75-degrees and a 45-degree tilt, improving usability and comfort for individual users. It is available with four languages English, Spanish, Portuguese and French, making it even more user-friendly and accessible to a wider audience. The new LAN connectivity feature lets the operator use the PC based APP (ELE Logger) to download test results away from the test area. User flexibility has also increased with the new ADR Touch Control PRO as it can now be operated remotely, so tests can be initiated away from the test area. Many issues can be resolved quickly by our service team through the new remote diagnostics feature and updating to the latest version of software has never been easier.

#### COMPATIBILITY

The all new dual sensor capabilities allow users to test both concrete and cement samples on one frame. The ADR Touch Control PRO is compatible with all existing compression frames and upgrade kits are also available. The upgrade kits can be used to convert existing ADR-Auto consoles to the new Automatic Digital Control Readout.

## TESTING TIMES

The new generation ADR Compression Machines have an increased control over the pace rate, which allows users to run the pace rate higher than average, but still within standard. This produces an average time saving of 10% for a typical 150mm cube sample.

## ELECTRICAL

Reduced component count and no wire design results in increased reliability and serviceability. New low voltage interlocks and e-stop has increased safety. The ADR Touch Control PRO has the latest Arm Core Processor technology which has improved the processing power and speed.

---

## Specification

Capacity	2000 kN
Cubes (Concrete)	Up to 200 mm
Cylinders (Concrete)	Up to 320 x 160 mm
Blocks	Via optional Platen Handling System
TFV and ACV	Yes
Voltage Supply	220-240 V 50 Hz 1 Ph
Frame Type	Welded
Max vert. Clearance	340 (360 mm without 20 mm Ram Space)
Max hor. Clearance	355 mm
Platen Sizes	Lower 220mm sq, Upper 300mm dia
Max Ram Travel	50 mm





## Standard Distance Piece - 50 mm Depth

Code: [37-5000](#)

Product Group: [Distance Pieces](#)

## Further Information

**\*\*Not available for sale in the USA\*\***



## Standard Distance Piece - 80 mm Depth

Code: [37-5050](#)

Product Group: [Distance Pieces](#)

### Further Information

**\*\*Not available for sale in the USA\*\***



## Standard Distance Piece - 100 mm Depth

Code: [37-5100](#)

Product Group: [Distance Pieces](#)

## Further Information

**\*\*Not available for sale in the USA\*\***



## Test Pieces EN 12390-6 Pack of 100 Hardboard.

Code: [37-5450](#)

Product Group: [Platen Assemblies](#)

Hardboard strips for use with Split Cylinder Platen Assemblies. Pack of 100.

## Further Information

\*\*Not available for sale in the USA\*\*



## 100kN Flexural (Beams) Frame. Supplied Without Specimen Bearers and Fitting Kit.

Code: 37-6130

Product Group: [Flexural Testing for Beams, Flexural Frame Attachments](#)

- Open sided for ease of specimen loading
- Meets EN 12390-5, 1521, 13161, 772-6 and ASTM C78 for standard section beams
- Optional ball seating assembly

This rigidly constructed, open sided frame is suitable for testing 100 mm and 150 mm square-section beams. The frame supports a hydraulic ram and upper sub-platen assembly incorporating a spherical seating. The upper and lower sub-platens will accept various specimen loading bearers, which are supplied separately.

Please note, a flexural fitting kit is required, see the accessories tab for options.

## Standards

BS 1881-118, EN 12390-5



## **ASTM C78 Specimen Bearer Assembly Case-Hardened 38mm Dia X 160mm Length.**

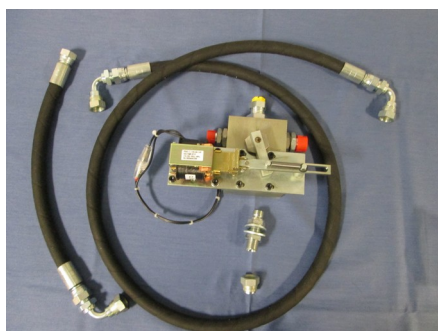
Code: [37-6132](#)

Product Group: [Flexural Testing for Beams, Flexural  
Frame Attachments](#)

Comprising 2 self-aligning upper bearers, 1 self-aligning and 1 fixed lower bearer; case-hardened, 38 mm diameter x 160 mm long and suitable for 3- or 4-point flexural testing of beams.

### **Further Information**

**\*\*Not available for sale in the USA\*\***



## 100 kN Flexural Fitting Kit ADR Auto for 220 - 240 V AC, 50 Hz, 1 ph

Code: [37-6135/01](#)

Product Group: [Accessories to connect ELE  
compression machines to the flexural/transverse  
frames](#)

These flexural frames can be used with a wide range of ELE compression machines. Simply select one of two fitting kits designed to link the flexural frame to either the ADR-Auto range of compression machines.

## Further Information

**\*\*Not available for sale in the USA\*\***



## Pure Mineral Oil 1 Litre Bottle.

Code: [38-0620](#)

Product Group: [Blaine Fineness Apparatus](#),  
[Determination of Fineness Blaine Apparatus](#)

## Standards

EN 196-21, ASTM C204





## Reference Cement

Code: [38-0645](#)

Product Group: [Determination of Fineness Blaine Apparatus](#)

Accessory: 5g sachet.

## Standards

ASTM C204, AASHTO T153

## Further Information

Available from U.K factory



## Filter Papers

Code: [38-0650](#)

Product Group: [Determination of Fineness Blaine Apparatus](#)

Accessory: 12.7mm diameter. Box of 100.

## Standards

ASTM C204

## Further Information

**\*\*NOT AVAILABLE FOR SALE IN THE USA\*\***



## Blaine Air Permeability Apparatus

Code: 38-1000

Product Group: Blaine Fineness Apparatus,  
Determination of Fineness Blaine Apparatus

- Designed for the determination of fineness to EN 196-6, BS 4359-2, ASTM C204
- Supplied complete with stainless steel cell perforated disc and plunger Manometer U-Tube Aspirator bottle of Manometer liquid (pure mineral 1 litre) and a box of filter papers

## Standards

EN 196-6, EN 459-2, EN 13286-44, BS 4359-2, ASTM C204, AASHTO T153

## Specification

Cell	Stainless steel; 12.70 ±0.10 mm i.d.
Disk	0.9 ±0.1 mm thick with 30-40 one mm diam. holes.
Plunger	Stainless steel.
Manometer	U-tube glass with ground joint, stop cock and rubber bulb assembly.
Filter Paper	12.70 mm diam.
Fluid	Pure Mineral Oil.
Weight	Net 7 lbs. (3.2 kg).



## Le Chatelier Flask

Code: 38-1200

Product Group: Le Chatelier Flask, Specific Gravity (relative density) of Hydration Cement

For determining the density of hydraulic cement and lime, supplied complete with calibration certificate. Capacity 250ml. Graduated from 0 to 1ml and from 18 to 24ml graduations. Accurate to 0.05ml.

## Standards

EN 196-6, ASTM C128, ASTM C188, E 694, AASHTO T133

## Specification

Graduations

Zero mark represents 250 ml, the capacity of the large bulb; neck graduations from 0-1 ml in 0.1 ml divisions with two extra 0.1 ml graduations above the 1.0 and below the 0 marks; bulb portion of neck holds 17 ml; top portion of neck graduated from 18-24 ml in 0.1 ml divisions; 24 ml capacity.

Stopper

Ground glass.

Weight

Net 8 oz. (227 g).



## Vicat Frame

Code: [38-2010](#)

Product Group: [Vicat Method](#)

Complete with consistency plunger, 10 mm diameter.  
Requires one initial or final set needle to make up test weight to 300g.

## Standards

EN 196-3, EN 13454-2, ASTM C187, ASTM C191

## Further Information

**\*\*NOT AVAILABLE FOR SALE IN THE USA\*\***



## EN Initial and Final Set Needle

Code: [38-2110](#)

Product Group: [Vicat Method](#)

1.13mm diameter and 1.13mm diameter with special footing.

## Standards

EN 196-3, EN 13454-2

## Further Information

**\*\*NOT AVAILABLE FOR SALE IN THE USA\*\***



## Vicat Mould

Code: [38-2200](#)

Product Group: [Vicat Method, Automatic Vicat](#)

Accessory: manufactured from brass and supplied complete with a ring and glass base plate.

## Further Information

**\*\*NOT AVAILABLE FOR SALE IN THE USA\*\***



## Pocket Concrete Penetrometer

Code: 38-2695

Product Group: Concrete Mortar Penetrometer, Concrete Mortar Penetrometer, Setting Time by Penetration Resistance

- Direct-Reading Scale From 0 To 700 Psi
- Indicator Sleeve Holds Reading Until

Released

- Lightweight Pocket-Size Design
- Includes Convenient Belt-Loop Style

Canvas Carrying Case

- Steel Shaft Needle With 1/20 Sq. In. Surface

Area

- Indicator Sleeve Holds Reading Until

Released

## Standards

ASTM C187, ASTM C191, ASTM C780

## Specification

Needle	Steel shaft; 1/20 sq. in. surface area.
Range	0 to 700 psi.
Scale	Direct-reading; indicator sleeve holds reading until released.
Dimensions	3/4" (19 mm) diam. x 7" (178 mm) long.
Carrying Case	Canvas, with belt-loop.
Weight	Net 8 oz. (227 g).





## Mortar Mixer Digital 5L Capacity 220-240V 50Hz 1ph

Code: 39-0045/01

Product Group: Automatic/Manual 5 Litre Nominal Capacity Mortar Mixer

- New Microprocessor control
- New mix program selector
- Complies with latest EN Standards update
- Choice of automatic mixing cycles
- Sand and water dispenser supplied as standard

This mixer is designed to mix mortars and cement pastes to the requirements of the EN 196. The mixing paddle has a planetary motion and is driven by a motor with a microprocessor based speed and program controller. The mixer can be operated either in an automatic or manual mode. When the mixer is used in the manual mode, the two mixing speeds can be changed by means of a rocker switch, without switching off the motor. In the automatic mode any one of the preset mixing programs may be selected.

## Further Information

**\*\*NOT AVAILABLE FOR SALE IN THE USA\*\***

Complete with bowl and paddle, sand and Water dispensers. For 220V AC, 50 Hz, 1 ph.

## Specification

Dimensions (l x w x h)	530 x 390 x 715 mm
Speeds (rpm) Low, High	Paddle: 140 ± 5, 285 ± 10 Mixing Head: 62 ± 5, 125 ± 10
Rated Power	180 W
Bowl Capacity	5 litres approx.
Weight	54 kg



## Bowl Cover

Code: 39-0060

Product Group: Automatic/Manual 5 Litre Nominal  
Capacity Mortar Mixer

## Standards

EN 196-1, EN 196-3, EN 413-2, EN 459-2, EN 1744-1, EN 13279-2, EN 1015-2, EN 13395-1, EN 13454-2, ISO 679, BS 3892-1, BS 3892-3, BS 6463-103, BS 4551-1

## Further Information

**\*\*NOT AVAILABLE FOR SALE IN THE USA\*\***



## Scraper

Code: [39-0065](#)

Product Group: [Automatic/Manual 5 Litre Nominal Capacity Mortar Mixer](#)

Plastic 200mm long. Pack of 5.

## Standards

EN 196-1, EN 196-3, EN 413-2, EN 459-2, EN 1744-1, EN 13279-2, EN 1015-2, EN 13395-1, EN 13454-2, ISO 679, BS 3892-1, BS 3892-3, BS 6463-103, BS 4551-1

## Further Information

**\*\*NOT AVAILABLE FOR SALE IN THE USA\*\***



## 70.7 mm Cube Mould

Code: [39-0100](#)

Product Group: [Moulding of 70.7 mm Mortar Cubes](#)

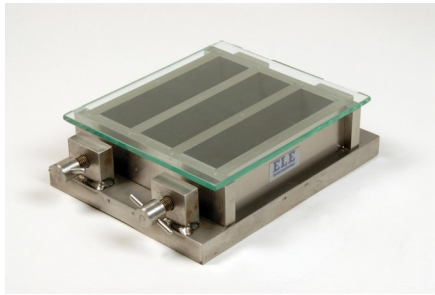
Manufactured from steel to dimensions specified in the relevant British Standard. Supplied complete with baseplate. Three moulds required for each test.

## Standards

BS 4550

## Further Information

**\*\*NOT AVAILABLE FOR SALE IN THE USA\*\***



## Three-gang Mould

Code: [39-1100](#)

Product Group: [Moulding of Prisms](#)

For 40.1 x 40 x 160 mm mortar prisms. This mould is manufactured to a very high specification. Supplied with glass plate.

## Standards

EN 196-1, EN 413-2, EN 459-2, EN 1015-10, EN 13454-2, ISO 679, BS 3892-1, BS 4551-1

## Further Information

**\*\*NOT AVAILABLE FOR SALE IN THE USA\*\***



## Glass Plate

Code: [39-1100/10](#)

Product Group: [N/A](#)

Spare plate for prism moulds.

## Further Information

**\*\*NOT AVAILABLE FOR SALE IN THE USA\*\***



## Jolting Table 220 - 240 V 50 Hz

Code: [39-1150/01](#)

Product Group: [Jolting Table](#)

This machine consists of a mould table seated on a rotating cam driven at 60 revolutions per minute. The apparatus is supplied with a remote mains switch box, incorporating a push button start/stop control and automatic stop control at end of test.

Supplied without moulds.

## Standards

EN 196-1, EN 413-2, EN 459-2, EN 1744-1, EN 1015-10, EN 1015-11, EN 13454-2, ISO 679, BS 3892-1, BS 4551-1

## Further Information

**\*\*NOT AVAILABLE FOR SALE IN THE USA\*\***

## Specification

Motor rating	0.24 kW (1/3 hp)
Cam shaft RPM	60
Table lift	15 +/- 0.3 mm
Overall dimensions with swing bolts raised	(H x W x D) 340 x 400 x 1045 mm
Weight	90 kg



## ADR Touch Control PRO 250 Cement Machine (jig only) 220-240v 50Hz

Code: [39-7170/01](#)

Product Group: [N/A](#)





## Flakiness Gauge.

Code: [42-0410](#)

Product Group: [Flakiness Sieves and Gauges](#)

Constructed of heavy gauge sheet steel to the dimensions specified in BS 812.

## Standards

BS 812

## Further Information

**\*\*NOT AVAILABLE FOR SALE IN THE USA\*\***



## Set of Flakiness Sieves

Code: 42-0600

Product Group: [Flakiness Sieves and Gauges](#)

Comprising 1 each of, 4.9 mm, 7.2 mm, 10.2 mm, 14.4 mm, 19.7 mm, 26.3 mm and 33.9 mm

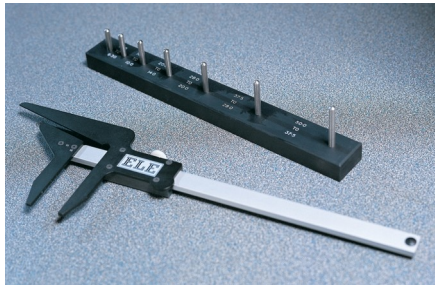
Standard BS 813

## Standards

BS 813

## Further Information

**\*\*NOT AVAILABLE FOR SALE IN THE USA\*\***



## Length Gauge

Code: [42-0820](#)

Product Group: [Elongation Index](#)

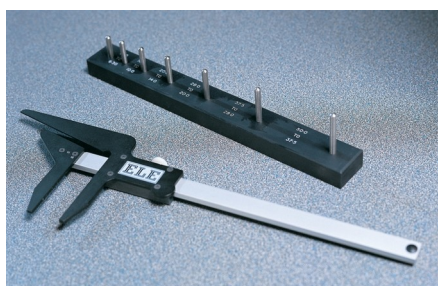
Manufactured to the dimensions specified in BS 182.

## Standards

BS 812-105

## Further Information

**\*\*NOT AVAILABLE FOR SALE IN THE USA\*\***



## 3.1 Shape Index Caliper.

Code: [42-0821](#)

Product Group: [Determination of the Shape Index](#)

Designed to measure the ratio of length to width of individual aggregate particles.

## Standards

EN 933-4

## Further Information

**\*\*NOT AVAILABLE FOR SALE IN THE USA\*\***



## 150mm Aggregate Crushing Value Apparatus. Supplied Complete with Metal Measure and Tamping Rod.

Code: 42-4300

Product Group: [Aggregate Crushing Value \(ACV\) and Ten Percent Fines Value \(TFV\)](#)

Comprising of 150 mm nominal diameter steel cylinder, plunger and base plate supplied complete with metal measure and tamping rod.

## Standards

BS 812-112

## Further Information

**\*\*NOT AVAILABLE FOR SALE IN THE USA\*\***



## Tamping Rod 8mm Dia X 300mm.

Code: 42-4580

Product Group: Aggregate Crushing Value (ACV) and  
Ten Percent Fines Value (TFV)

Spare: 8mm diameter x 300mm long with rounded  
end.

## Further Information

\*\*NOT AVAILABLE FOR SALE IN THE USA\*\*



## Vacuum Pyknometer, 6000 g

Code: 45-9300

Product Group: Vacuum Pyknometer, Vacuum Pyknometer (6,000 Gram), Specific Gravity (Rice) Test with 6,000 gram Vacuum Pyknometer

The Vacuum Pyknometer is a large capacity unit used in the rice test for determining the maximum specific gravity of bituminous paving mixtures. The Pyknometer has a transparent top for observation and a lightweight polycarbonate construction.

The Pyknometer has a total volume of 10 litres and will conveniently accept samples of 6000 grams to minimise segregation effects.

## Standards

EN 12697-5, ASTM D2041, AASHTO T209, AASHTO T283

## Specification

Capacity	Approximately 10 liters; 6,000 g (13 .2 lbs.) sample weight.
Construction	Lightweight polycarbonate with transparent upper half.
Gauge	2" (50.8 mm) diam., 30" x 0.5" Hg.
Aspirator	Plastic; 3/8" pipe thread (included).
Connections	Water inlet valve; quick disconnect for vacuum gauge and hose.
Dimensions	10-3/4" (273 mm) o.d. x 16" (406 mm) h.
Weight	Net 8 lbs. (3.6 kg).



## Rice Test Vibrator

Code: [45-9315/01](#)

Product Group: [Rice Test Vibrator](#), [Rice Test Vibrator](#)

The Rice Test Vibrator is used with the 45-9300 6000 g Vacuum Pyknometer. Adjustable clamps hold the pyknometer securely to the base during vibration.

## Standards

EN 12697-5, ASTM D2041, AASHTO T209

## Further Information

For 220 - 240 V AC, 50 Hz, 1ph.

## Specification

Dimensions	495 x 30 mm (height x base diameter)
Motor	1/20 hp, 1.6 amp
Weight	5.5 kg
Motor	1/20 h.p.; 3000 vpm; 1.6 amp.
Dimensions	19-1/2" (495 mm) h.; 12 " (30 mm) base diameter.
Weight	Net 14.3 lbs. (6.5 kg).





## 6,000 gr. Vacuum Pycnometer Attachment

Code: [45-9315/10](#)

Product Group: [Rice Test Vibrator](#), [Rice Test Vibrator](#),  
[Specific Gravity \(Rice\) Test with 6,000 gram Vacuum Pycnometer](#)

Attachment required to mount 6,000 gr. Vacuum Pycnometer onto Rice Test Vibrator.

## Standards

EN 12697-5



## 225 Litre Drying Oven

Code: 78-1250/01

Product Group: Percentage Refusal Density (PRD),  
Oven Drying Method, Oven Drying Method, Oven  
Drying Method

## Standards

EN 12697-32, EN 13280-4, BS 598-104, BS 1377

## Specification

Capacity	225 litres
External Dimensions (l x w x h)	540 x 1040 x 940
Internal Dimensions (l x w x h)	440 x 920 x 600
Fluctuation	± 0.75°C
Rated power heater elements	2000 W
Shelves supplied	3
Shelf positions	4
Weight	80 kg



## Electronic Balance - 3600g x 0.01g

Code: [78-5447/01](#)

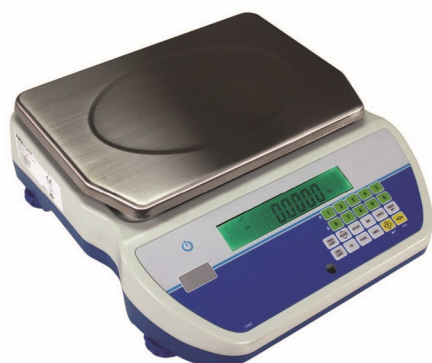
Product Group: [Electronic Balances](#)

## Further Information

**\*\*Not available for sale in the USA\*\***

## Specification

Capacity resolution	3600 g x 0.01 g
Pan size	160 x 160 mm
Mains and battery	No
Dimensions (l x w x h)	260 x 170 x 90 mm
Weight	6 kg
Weighing units	g, kg, ct, GN, N, lb, oz, lb:oz, ozt, dwt, T, custom unit
Readability	0.1 g



## Electronic Balance - 32 000 g x 1.0 g

Code: 78-5527/01

Product Group: Electronic Balances

- Backlit display changes colour for quick notification of checkweighing limits
- Colour-coded keys facilitate quick recognition of the most frequently used buttons
- Large, grade 304 stainless steel pan allows easy cleaning
- RS-232 interface is available to provide speedy connection to computers and printers
- Optional USB interface simplifies data communication
- Sealed keypad protects against dirt and spills
- Solid ABS housing is durable for industrial use
- Adjustable levelling feet help optimise setup
- Drip channels help divert spills away from the scales internal components
- Checkweighing with audible alarm
- External calibration allows for verification and adjustment with weights
- Internal counting resolution 1:600,000 for precise results
- Parts counting optimisation automatically refines piece weight as parts are added
- Parts counting with freely selectable sample sizes
- Preset tare function speeds the process of repetitive weighing
- Product look up (PLU) memory locations store a range of items for recall
- Programmable auto power-off to save energy
- Rechargeable battery included for operation almost anywhere

Applications: weighing, parts counting, checkweighing, check counting, accumulation of weight, percentage weighing and net total weighing.

## Further Information

\*\*Not available for sale in the USA\*\*

## Specification

Capacity resolution	32000 g x 1.0 g
Pan size	210 x 300 mm
Mains and battery	Yes
Dimensions (w x d x h)	326 x 355 x 115 mm
Net weight	3.29 kg

## Product Sheet

[www.ele.com](http://www.ele.com)  
+44 (0) 01525 249 200



Weighing units

g, kg, lb, lb:oz, oz

Repeatability

1.0 g

Power supply

12VDC 50/60 Hz 800mA  
adapter/ Internal rechargeable  
battery



## Weights for Harvard Trip Balance

Code: [78-7110](#)

Product Group: [Mechanical Balances, Harvard](#)  
[Mechanical Trip Balance](#)

## Standards

ASTM class 6

## Further Information

**\*\*Not available for sale in the USA\*\***



## 300mm Dia BS Sieve 2.36mm Stainless Steel Mesh.

Code: [79-2280](#)

Product Group: [300mm Diameter BS Sieves](#), [300mm Diameter BS Sieves](#), [300mm Diameter BS Sieves](#)

### Standards

BS 410-1, ISO 3310, ISO 565, EN933-2

### Further Information

**\*\*NOT AVAILABLE FOR SALE IN THE USA\*\***



## 300mm Dia BS Sieve 6.30mm Perforated Plate.

Code: 79-2525

Product Group: 300mm Diameter BS Sieves, 300mm Diameter BS Sieves, 300mm Diameter BS Sieves

### Standards

BS 410-1, ISO 3310, ISO 565, EN933-2

### Further Information

\*\*NOT AVAILABLE FOR SALE IN THE USA\*\*





## 300mm Dia BS Sieve 10.0mm Perforated Plate.

Code: 79-2555

Product Group: 300mm Diameter BS Sieves, 300mm Diameter BS Sieves, 300mm Diameter BS Sieves

### Standards

BS 410-1, ISO 3310, ISO 565, EN933-2

### Further Information

\*\*NOT AVAILABLE FOR SALE IN THE USA\*\*



## 300mm Dia BS Sieve 12.5mm Perforated Plate

Code: 79-2565

Product Group: 300mm Diameter BS Sieves, 300mm Diameter BS Sieves, 300mm Diameter BS Sieves

### Standards

BS 410-1, ISO 3310, ISO 565, EN933-2

### Further Information

**\*\*NOT AVAILABLE FOR SALE IN THE USA\*\***



## 300mm Dia BS Sieve 14.0mm Perforated Plate.

Code: 79-2575

Product Group: 300mm Diameter BS Sieves, 300mm Diameter BS Sieves, 300mm Diameter BS Sieves

### Standards

BS 410-1, ISO 3310, ISO 565, EN933-2

### Further Information

\*\*NOT AVAILABLE FOR SALE IN THE USA\*\*



## 300mm Dia BS Sieve 16.0mm Perforated Plate.

Code: 79-2580

Product Group: 300mm Diameter BS Sieves, 300mm Diameter BS Sieves, 300mm Diameter BS Sieves

### Standards

BS 410-1, ISO 3310, ISO 565, EN933-2

### Further Information

**\*\*NOT AVAILABLE FOR SALE IN THE USA\*\***



## 300mm Dia BS Sieve 25.0mm Perforated Plate.

Code: 79-2605

Product Group: 300mm Diameter BS Sieves, 300mm Diameter BS Sieves, 300mm Diameter BS Sieves

### Standards

BS 410-1, ISO 3310, ISO 565, EN933-2

### Further Information

**\*\*NOT AVAILABLE FOR SALE IN THE USA\*\***



## 300mm Dia BS Sieve 40.0mm Perforated Plate

Code: 79-2645

Product Group: 300mm Diameter BS Sieves, 300mm Diameter BS Sieves, 300mm Diameter BS Sieves

### Standards

BS 410-1, ISO 3310, ISO 565, EN933-2

### Further Information

**\*\*NOT AVAILABLE FOR SALE IN THE USA\*\***



## 300mm Dia BS Sieve 50.0mm Perforated Plate.

Code: 79-2655

Product Group: 300mm Diameter BS Sieves, 300mm Diameter BS Sieves, 300mm Diameter BS Sieves

### Standards

BS 410-1, ISO 3310, ISO 565, EN933-2

### Further Information

\*\*NOT AVAILABLE FOR SALE IN THE USA\*\*



## 300mm Dia BS Sieve 63.0mm Perforated Plate.

Code: 79-2670

Product Group: 300mm Diameter BS Sieves, 300mm Diameter BS Sieves, 300mm Diameter BS Sieves

### Standards

BS 410-1, ISO 3310, ISO 565, EN933-2

### Further Information

**\*\*NOT AVAILABLE FOR SALE IN THE USA\*\***





## Spatula 200 mm

Code: [81-0140](#)

Product Group: [Determination of Plastic Limit, Spatulas](#)

## Further Information

**\*\*NOT AVAILABLE FOR SALE IN THE USA\*\***



## Trowel - Gardeners type

Code: [81-0310](#)

Product Group: [Trowels and Floats](#)

## Further Information

**\*\*NOT AVAILABLE FOR SALE IN THE USA\*\***



## Trowel - Gauging

Code: [81-0335](#)

Product Group: [Trowels and Floats](#)

## Further Information

**\*\*NOT AVAILABLE FOR SALE IN THE USA\*\***



## Stopwatch

Code: [81-0521](#)

Product Group: [Watches and Clocks](#)

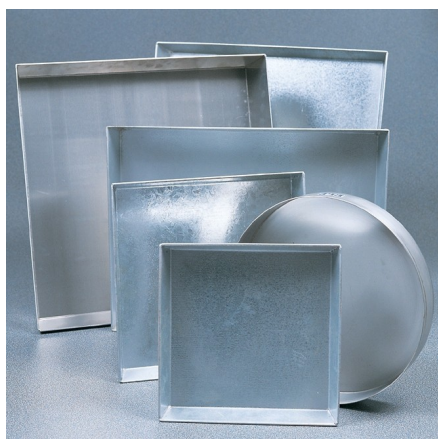
## Further Information

**\*\*NOT AVAILABLE FOR SALE IN THE USA\*\***

## Specification

Dimensions (mm)

64 x 53 x 19



## Sample Tray - 910 x 910 x 76 mm

Code: [81-4160](#)

Product Group: [Sample Trays](#)

### Further Information

**\*\*NOT AVAILABLE FOR SALE IN THE USA\*\***



## Beaker - 600 ml

Code: 82-0200

Product Group: Beakers and Covers

Borosilicate glass, squat form.

## Further Information

**\*\*NOT AVAILABLE FOR SALE IN THE USA\*\***



## Measuring Cylinder - Glass 100 ml

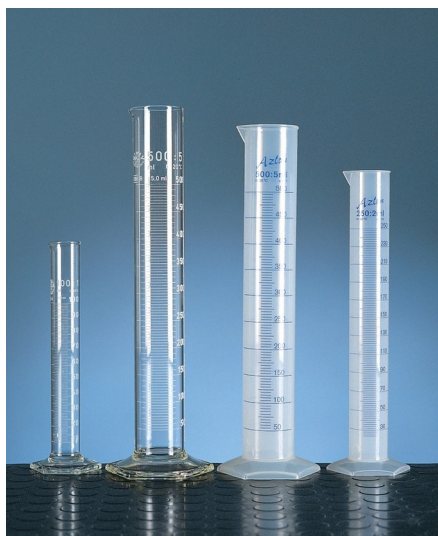
Code: [82-0380](#)

Product Group: [Measuring Cylinders, BS, Volumetric Shrinkage](#)

Soda glass, spouted, BS EN 4788.

## Further Information

**\*\*NOT AVAILABLE FOR SALE IN THE USA\*\***



## Measuring Cylinder - Glass 250 ml

Code: [82-0420](#)

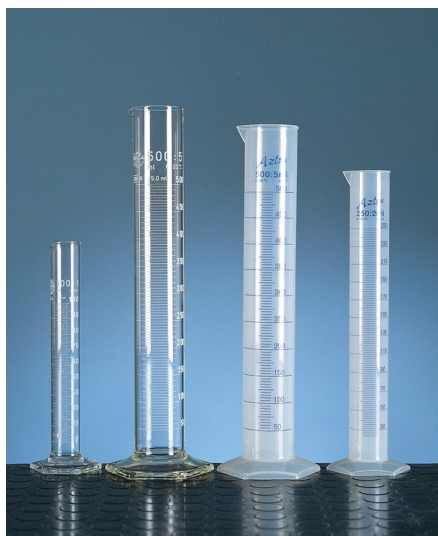
Product Group: [Measuring Cylinders, BS](#)

Soda glass, spouted, BS EN 4788.

## Further Information

**\*\*NOT AVAILABLE FOR SALE IN THE USA\*\***





## Measuring Cylinder - Glass 500 ml

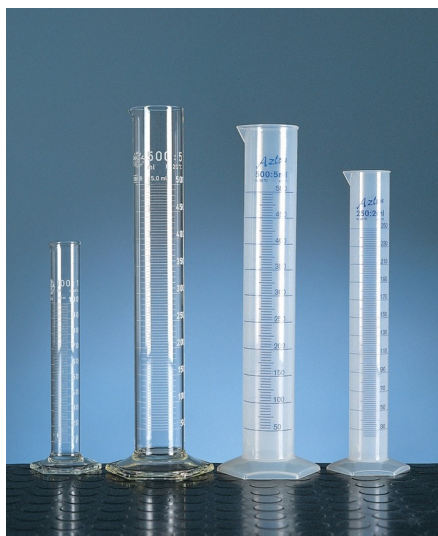
Code: [82-0460](#)

Product Group: [Measuring Cylinders, BS](#)

Soda glass, spouted, BS EN 4788.

## Further Information

**\*\*NOT AVAILABLE FOR SALE IN THE USA\*\***



## Measuring Cylinder - Glass 1000 ml

Code: [82-0500](#)

Product Group: [Measuring Cylinders, BS](#)

Soda glass, spouted, BS EN 4788.

## Further Information

**\*\*NOT AVAILABLE FOR SALE IN THE USA\*\***



## Syringe with Rubber Bulb.

Code: [82-2820](#)

Product Group: [Setting Time by Penetration Resistance, Syringe and Stirring Rod](#)

## Further Information

**\*\*Not available for sale in the USA\*\***



## Porcelain Crucible

Code: [82-3320](#)

Product Group: [Bottles and Crucibles](#),  
[Loss-on-Ignition](#)

30ml capacity complete with lid.

## Further Information

**\*\*NOT AVAILABLE FOR SALE IN THE USA\*\***



## Distilled Water Still

Code: [82-8020/01](#)

Product Group: [Distilled Water Still](#)

## Further Information

**\*\*NOT AVAILABLE FOR SALE IN THE USA\*\***

## Specification

Dimensions (l x w x h)	590 x 530 x 940 mm
Boiling chamber	Glass
Condenser	Borosilicate glass
Output	3.5 litres/hr when permanently connected to water supply
Electrical supply	220 – 240 V AC, 50 - 60 Hz, 1 ph
Rated power	2.75 kW
Weight	12 kg