



IF IT'S WORTH BUILDING, IT'S WORTH TESTING

Contents

www.ele.com
+44 (0) 01525 249 200



This wishlist was generated on 14/08/2019, and contains the following Products:

23-1501

100mm Dia Soil Auger Head

23-1504

150mm Dia Soil Auger Head

23-1517

150mm Dia Gravel Auger Head.

23-1525

50mm Dia Dutch Soil Auger Head.

23-1541

Extension Rod 27mm Diameter 1m Long. for Use with Auger Heads

23-1543

Stillson Wrench Size 14.

23-1547

Handle and T Piece for Use with EL23-1541.

23-1577

38mm Diameter Sample Tube 230mm Long Complete with End Caps.

23-1579

Adaptor for 23-1577 to fit extension rods

23-1587

Jarring Link for Driving Sample Tubes.

23-1617

Spiral Auger 40mm Diameter. One Piece Model

23-3000

Riffle Box 7mm Slot Width Complete with Three Containers.

23-3070

Riffle Box 15mm Slot Width Complete with Three Containers.

23-3170

Riffle Box 30mm Slot Width Complete with Three Containers.

23-3200

Riffle Box 38mm Slot Width Complete with Three Containers.

23-3300

Riffle Box 50mm Slot Width Complete with Three Containers.

23-4200

Proctor/Core Cutter Extruder Frame and Hydraulic Jack. Extrudes 100mm/4 Inch Diameter Specimens

23-6191/01

Bench-Mounting Mixer 5 Litre Capacity Complete with Bowl Beater and Whisk. 220-240V 50Hz 1Ph.

24-0430

Glass Plate.

24-0544

Penetration Test Cone

24-0545/01

Semi-Automatic Cone Penetrometer

24-0546

Test Gauge for Checking Condition of Cone Point.

24-0548

Penetration Test Cup.

24-0811

Rod Comparator

24-1800

Shrinkage Mould to BS 1377

24-2830

Gas Jar 75mm Dia X 300mm with Glass Cover and Rubber Bung.

24-2854/01

Mechanical End-Over-End Shaker Ce

24-2885

Pyknometer Complete with Non-Corrodable Cone and Rubber Seal 1 kg Capacity

24-2900

50MI Density Bottle with Perforated Stopper.

24-4145

Sodium Hexametaphosphate 500G.

24-4620

Soil Hydrometer BS EN DD ENV graduated 0.995 to 1.030 g/ml

24-4700

Hydrometer Sedimentation Cylinder

24-4800

Nomographic Chart for The Determination of Stokes Law.

24-4865/01

Constant Temperature Bath 5 to 99.9 Deg.C X 0.1 Deg.C with Led Display and False Base Support.

24-9000

BS Standard Compaction Mould 1000Cm Capacity.

24-9002

Standard Compaction Rammer 2.5kg BS1377

24-9004

BS Compaction Rammer 4.5Kg Wt.

24-9150/01

Cbr-Test 50 Machine 50kN Capacity BS and ASTM Supplied with Stabilising Bar.

24-9182

Penetration Piston

24-9186

Penetration Dial Gauge BS

24-9188

Bracket and Adaptor. Dual Purpose Mounting Bracket for CBR Penetration Gauges EL24-9184/EL24-9186

24-9198

BS Cbr Mould Body.

24-9200

BS Extension Collar

24-9202

BS Perforated Base Plate.

24-9204

BS Solid Base or Top Plate

24-9206

Cbr Cutting Collar with Area Ratio of 21.9% to Fit BS Moulds.

24-9208

C-Spanner for BS Cbr Mould. Two Required.

24-9210

Base Plate Tool for BS Mould

24-9212

Static Compaction Plug.

24-9214

2Kg Annular Surcharge Weight

24-9216

2Kg Split Surcharge Weight.

24-9220

Filter Papers 150mm Dia Equivalent to Whatman No 1. Box of 100.

24-9237

Spacer Disc 5-7/8" Diameter

24-9260

Swell Plate

24-9262

Swell Stand

24-9275

Dial Gauge 25mm Travel X 0.01mm Divisions.

25-0446

50mm Stainless Steel Consolidation Cell

25-0467

75mm Stainless Steel Consolidation Cell

25-0500/09

AUTO Soils Consolidator

25-8090

Silicon Grease Lubricant.

27-1565

15 kN S Type Load Cell (lead 0.7 m)

27-1650

15 mm Displacement Transducer (lead 0.7 m)

27-1873

DS8.0 One-Dimensional Consolidation Software

29-3729

Pocket Penetrometer.

29-3739

Proving Ring Penetrometer

29-5020

Soft Headed Mallet.

34-0130

Tamping Rod 16mm Dia X 600mm long hemispherical at both ends.

34-0140

300 mm Stainless Steel Rule.

34-0192

Slump Test Set BS & ASTM. C/W Slump Cone Base Plate Steel Rule Tamping Rod & Funnel.

34-0450

Apparatus for Determining Flow In Concrete (Flow Table).

34-2800

Bulk Density Measure 30 Litre

34-2820

Bulk Density Measure 15 Litre

34-2910

Compacting Bar 25mm Sq X 380mm

34-3265

Air Entrainment Meter B Type Complete with Carrying Case. Supplied with Aluminium Tamping Bar.

34-4520

100mm Cube Mould 4-Part Clamp Type. Cast Iron Construction. BS EN Compliant.

34-4570

150mm Cube Mould 4-Part Clamp Type. Cast Iron Construction. BS EN Compliant.

34-5053

150 X 150 X 750mm Beam Mould.

34-6122/01

Melting Pot 4 Litre Capacity. 50 to 300 Deg. C. Temperature Range.

34-8100/09

Buoyancy Balance 16Kg X 0.1G

34-8105

Cradle

35-1480

Standard Concrete Test Hammer

35-2302/09

Ultrasonic Concrete Tester 110-240V 50/60Hz 1Ph

35-2505

Crack Detection Microscope Magnification X 40 Measuring Range of 4mm In 0.02mm Divisions

36-3280/01

ADR Touch SOLO 2000 BS EN Compression Machine with Digital Readout and Self Centring Platens.

37-5110

EN 12390-3/4 Distance Piece - 20 mm Depth

37-5120

EN 12390-3/4 Distance Piece - 50 mm Depth

37-5170

EN 12390-3/4 Distance Piece - 80 mm Depth

37-5180

EN 12390-3/4 Distance Piece - 100 mm Depth

37-6130

100kN Flexural (Beams) Frame. Supplied Without Specimen Bearers and Fitting Kit.

37-6131

BS 1881 Specimen Bearer Assembly 38mm Dia X 160mm Length.

37-6138

100kN Flexural Fitting Kit (ADR) Used for Connecting Flexural Frames to ADR Compression Machines.

42-0410

Flakiness Gauge.

42-0820

Length Gauge

42-1005

Wire Basket Brass with Handle Nominal 6000Cm³ Capacity with 1.7mm Wire Mesh.

42-1700

Sand Absorption Cone

42-1720

Tamping Rod

42-1995

Bulk Density Measure 3 Litre.

42-2000

Bulk Density Measure 7 Litre

42-2950

Quantab Chloride Titrator Type 1175 Titration Range 0.005% - 0.1% 30-600ppm Nacl Pack of 40 Strips.

42-2952

Quantab Chloride Titrator Strips Type 1176 Titration Range 0.05%-1% (300-6000 ppm) Nacl Pack of 40

42-2958

Sulphate Test Strips

42-4000

Aggregate Impact Value Apparatus Complete with 16mm Dia X 600mm Long Rod

42-4300

150mm Aggregate Crushing Value Apparatus. Supplied Complete with Metal Measure and Tamping Rod.

42-5300/10

Set of 12 Abrasive Charges (ASTM).

42-5315/01

Los Angeles Abrasion Apparatus

430-020

Digital pH/Temp/mV Meter with electrode, carrying case and pH 4 & 7 buffers

45-3803

Filter Discs Pack of 100

45-3810/01

Rotatest 1500

45-5580/01

Isomantle Electric Heater

45-6310

Compaction Mould

45-6462

Paper Discs

45-6550/01

30 L Heating Bath with Led Display Cover

45-6600/01

AutoComp 100-A

45-6810/01

Marshall Test 50

45-6850

Breaking Head (Marshall)

45-6880

Flow Meter BS/EN

46-3310/01

Cleveland Flash Cup Apparatus

47-0202

Digital Asphalt Thermometer

47-0202/10

250 Asphalt Probe

78-0760

Clamped Boss Load Ring - 28.0 kN

78-0860

50kN Clamped Boss Load Ring

78-1250/01

225 Litre Drying Oven

78-2950/01

Hotplate

78-5405/01

Electronic Balance - 620 g x 0.001 g

78-5456/01

Electronic Balance - 4600 g x 0.01 g

78-5485/01

Electronic Balance - 22000 g x 0.1 g

78-5527/01

Electronic Balance - 32 000 g x 1.0 g

79-0010

200 mm Diameter Lid

79-0020

200 mm Diameter Receiver

79-0070

200mm Dia BS Sieve 63 Mic Stainless Steel Mesh.

79-0080

200mm Dia BS Sieve 75 Mic Stainless Steel Mesh.

79-0120

200mm Dia BS Sieve 150 Mic Stainless Steel Mesh.

79-0140

200mm Dia BS Sieve 212Mic Stainless Steel Mesh.

79-0160

200mm Dia BS Sieve 300Mic Stainless Steel Mesh.

79-0180

200mm Dia BS Sieve 425Mic Stainless Steel Mesh.

79-0200

200mm Dia BS Sieve 600Mic Stainless Steel Mesh.

79-0220

200mm Dia BS Sieve 850Mic Stainless Steel Mesh.

79-0240

200mm Dia BS Sieve 1.18mm Stainless Steel Mesh.

79-0260

200mm Dia BS Sieve 1.70mm Stainless Steel Mesh.

79-0270

200mm Dia BS Sieve 2.00mm Stainless Steel Mesh.

79-0280

200mm Dia BS Sieve 2.36mm Stainless Steel Mesh.

79-0300

200mm Dia BS Sieve 3.35mm Stainless Steel Mesh.

79-2010

300mm Dia Lid.

79-2020

300mm Dia Receiver.

79-2515

300mm Dia BS Sieve 5.00mm Perforated Plate.

79-2525

300mm Dia BS Sieve 6.30mm Perforated Plate.

79-2555

300mm Dia BS Sieve 10.0mm Perforated Plate.

79-2575

300mm Dia BS Sieve 14.0mm Perforated Plate.

79-2595

300mm Dia BS Sieve 20.0mm Perforated Plate.

79-2615

300mm Dia BS Sieve 28.0mm Perforated Plate.

79-2640

300mm Dia BS Sieve 37.5mm Perforated Plate.

79-2655

300mm Dia BS Sieve 50.0mm Perforated Plate.

79-2670

300mm Dia BS Sieve 63.0mm Perforated Plate.

79-2680

300mm Dia BS Sieve 75.0mm Perforated Plate.

79-7200

Sieve Brush Brass and Nylon

79-7210

Sieve Brush Nylon

80-0200/01

ELE Sieve Shaker

81-0100

Spatula 100 mm

81-0140

Spatula 200 mm

81-0200

Aluminium Scoop Small

81-0220

Aluminium Scoop Large

81-0222

Scoop - 250 mm long

81-0310

Trowel - Gardeners type

81-0340

Float - Plasterer's type

81-0508

Heat-Resistent Gloves, With Gauntlet

81-0518

Timer Clock

81-0588

Vernier Caliper Range 0 to 200mm X 0.02mm.

81-0701

Capping Ladle

81-0705

Wire Brush

81-0710

Trimming Knife

Contents

www.ele.com
+44 (0) 01525 249 200



81-2979

Moisture Content Tin

81-3040

Sample Container - Tinned Steel 2.5 litres

81-3540

Sample Container - Plastic 10 litres

81-3545

Transport/Storage Container

81-4020

Sample Tray - 306 x 306 x 38 mm

81-4030

Sample Tray - 406 x 406 x 50 mm

81-4080

Sample Tray - 610 x 610 x 63 mm

81-4230

Sample Tray - 1200 x 1160 x 50 mm

82-0420

Measuring Cylinder - Glass 250 ml

82-0460

Measuring Cylinder - Glass 500 ml

82-1060

Volumetric Flask - 1000 ml

82-1300

Bulb Pipette

82-2000

Evaporating Dish - 150 x 45 mm

82-2200

Buchner Funnel

82-2500

Wash Bottle

82-4005

Glass Stirring Rod

82-5247

Portable Thermometer 100 ml

82-7031

Paraffin Wax

82-7341

Mould Oil (25 Litre Drum)

82-8500/01

Water Bath - 12 litres



100mm Dia Soil Auger Head

Code: [23-1501](#)

Product Group: [Soil and Gravel Auger Heads](#)

Constructed of heavy-duty steel plates; partly interlocked at the cutting end and suitable for cohesive soils.



150mm Dia Soil Auger Head

Code: [23-1504](#)

Product Group: [Soil and Gravel Auger Heads](#)

Constructed of heavy-duty steel plates; partly interlocked at the cutting end and suitable for cohesive soils.



150mm Dia Gravel Auger Head.

Code: [23-1517](#)

Product Group: [Soil and Gravel Auger Heads](#)

Comprises one piece steel casting with a spiral point and two plates designed to close when lifting samples from the borehole; suitable for gravel and sand.



50mm Dia Dutch Soil Auger Head.

Code: [23-1525](#)

Product Group: [Soil and Gravel Auger Heads](#)

Constructed of heavy-duty steel plates; partly interlocked at the cutting end and suitable for fine, silty sand.



Extension Rod 27mm Diameter 1m Long. for Use with Auger Heads

Code: [23-1541](#)

Product Group: [Extension Rods, Handles and Tools](#)

With tube connector, constructed of steel tubing
approximately 1 metre long.



Stillson Wrench Size 14.

Code: [23-1543](#)

Product Group: [Extension Rods, Handles and Tools](#)

Size 14, for use with 23-1541. Two required.



Handle and T Piece for Use with EL23-1541.

Code: [23-1547](#)

Product Group: [Extension Rods, Handles and Tools](#)



38mm Diameter Sample Tube 230mm Long Complete with End Caps.

Code: [23-1577](#)

Product Group: [Extension Rods, Handles and Tools](#)

Supplied without Adaptor, but with two end caps



Adaptor for 23-1577 to fit extension rods

Code: [23-1579](#)

Product Group: [N/A](#)

Adaptor to fit 38mm diameter sample tubes to extension rods.



Jarring Link for Driving Sample Tubes.

Code: [23-1587](#)

Product Group: [Extension Rods, Handles and Tools](#)

For driving sample tubes



Spiral Auger 40mm Diameter. One Piece Model

Code: [23-1617](#)

Product Group: [Soil and Gravel Auger Heads](#)

40 mm diameter x 200 mm long with rod and T-piece attached. Overall nominal length 1250 mm.



Riffle Box 7mm Slot Width Complete with Three Containers.

Code: 23-3000

Product Group: Riffle Boxes (Sample Dividers)

Manufactured from heavy-gauge sheet metal. BS recommended maximum particle size of 4.5 mm. EN recommended maximum particle size of 3.5 mm. Includes 12 slots each with a 7 mm slot width and an overall approximate capacity of 0.3 litres.

Standards

BS 1377, BS 1924, BS 812, EN 932-1

Specification

Recommended max particle size BS	4.5
Recommended max particle size EN	3.5
Slot width mm	7
No. of slots	12
Approx. capacity kg	0.3
Weight kg	1.5



Riffle Box 15mm Slot Width Complete with Three Containers.

Code: [23-3070](#)

Product Group: [Riffle Boxes \(Sample Dividers\)](#)

Manufactured from heavy-gauge sheet metal. BS recommended maximum particle size of 10 mm. EN recommended maximum particle size of 7.5 mm. Includes 12 slots each with a 15 mm slot width and an overall approximate capacity of 2 litres.

Standards

BS 1377, BS 1924, BS 812, EN 932-1

Specification

Recommended max particle size BS	10
Recommended max particle size EN	7.5
Slot width mm	15
No. of slots	12
Approx. capacity kg	2
Weight kg	8



Riffle Box 30mm Slot Width Complete with Three Containers.

Code: [23-3170](#)

Product Group: [Riffle Boxes \(Sample Dividers\)](#)

Manufactured from heavy-gauge sheet metal. BS recommended maximum particle size of 20 mm. EN recommended maximum particle size of 15 mm. Includes 10 slots each with a 30 mm slot width and an overall approximate capacity of 4 litres.

Standards

BS 1377, BS 1924, BS 812, EN 932-1

Specification

Recommended max particle size BS	20
Recommended max particle size EN	15
Slot width mm	30
No. of slots	10
Approx. capacity kg	4
Weight kg	17.5



Riffle Box 38mm Slot Width Complete with Three Containers.

Code: 23-3200

Product Group: Riffle Boxes (Sample Dividers)

Manufactured from heavy-gauge sheet metal. BS recommended maximum particle size of 25 mm. EN recommended maximum particle size of 19 mm. Includes 8 slots each with a 38 mm slot width and an overall approximate capacity of 11 litres.

Standards

BS 1377, BS 1924, BS 812, EN 932-1

Specification

Recommended max particle size BS	25
Recommended max particle size EN	19
Slot width mm	38
No. of slots	8
Approx. capacity kg	11
Weight kg	17.5



Riffle Box 50mm Slot Width Complete with Three Containers.

Code: [23-3300](#)

Product Group: [Riffle Boxes \(Sample Dividers\)](#)

Manufactured from heavy-gauge sheet metal. BS recommended maximum particle size of 33 mm. EN recommended maximum particle size of 25 mm. Includes 8 slots each with a 50 mm slot width and an overall approximate capacity of 14 litres.

Standards

BS 1377, BS 1924, BS 812, EN 932-1

Specification

Recommended max particle size BS	33
Recommended max particle size EN	25
Slot width mm	50
No. of slots	8
Approx. capacity kg	14
Weight kg	22.5



Proctor/Core Cutter Extruder Frame and Hydraulic Jack. Extrudes 100mm/4 Inch Diameter Specimens

Code: 23-4200

Product Group: Soil Extruders, Accessories for manual and automatic compaction

Adaptor plates will be supplied; extrudes samples from BS Compaction Mould, Proctor Mould 100 mm, Core Cutter and Marshall Mould. Maximum extrusion force 20kn.

Standards

BS 1377-1

Further Information

NOT AVAILABLE FOR SALE IN THE USA



Bench-Mounting Mixer 5 Litre Capacity Complete with Bowl Beater and Whisk. 220-240V 50Hz 1Ph.

Code: [23-6191/01](#)

Product Group: [Sample Mixers](#), [Mixing](#), [Sample Mixers](#)

The mixer has two electrically switched mixing speeds which obviates the need to switch off during speed selection. The mixing head comprises a beater which contra-rotates about a central shaft using planetary gearing. A lever-acting lifting device facilitates the insertion and removal of the bowl. This mixer is suitable for the mixing of soil samples, mortar, bituminous mixtures and associated materials where comparatively small samples are being prepared. Supplied with stainless steel bowl, beater and whisk.

Standards

BS 598-107, BS 1377-1, BS 1924-1, EN 12697-35

Further Information

****NOT AVAILABLE FOR SALE IN THE USA****

Specification

Dimensions	545 x 380 x 550 mm
Beater Speeds (rpm) low, intermediate, high	136, 281, 580
Central shaft speeds (rpm) low, high	60, 124, 255
Rated power	500 W
Weight	24 kg



Glass Plate.

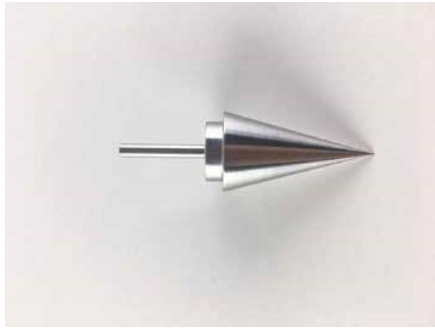
Code: [24-0430](#)

Product Group: [Casagrande Method, Determination of Plastic Limit](#)

500 mm square x 10 mm thick.

Standards

BS 1377-2



Penetration Test Cone

Code: [24-0544](#)

Product Group: [Cone Penetrometer Method](#), [Cone Penetrometer](#)

Stainless steel, 35 mm long with smooth surface at an angle of 30°.

Standards

BS 1377-2



Semi-Automatic Cone Penetrometer

Code: 24-0545/01

Product Group: Semi-Automatic Cone Penetrometer,
Semi-Automatic Cone Penetrometer

Bench mounted apparatus to determine the liquid limit of soils to BS1377. This method is applicable to a wide range of soils. The apparatus is fitted with a 150mm diameter dial indicator for direct reading of penetration. Supplied complete with 30 deg, 30mm long test cone. Manufactured from stainless steel and includes adjustable levelling feet.

Incorporates digital automatic controller, which releases the plunger head and ensures free falling of the penetration device during the test. The time set is displayed by a bright easy to read display.

Standards

BS 1377, BS 1924-2, EN 1997-2

Specification

Dial Indicator	150 mm diameter graduated in 400 x 0.1 mm divisions. Indicator incorporates a friction/gear system.
Height	Adjustable using rapid integral clamping mechanism.
Cone Release	Semi-Automatic
Cone	1 x 30°, 35 mm test cone included.
Base	Cast aluminum with adjustable leveling feet.
Weight	Net 19 lbs. (8.64 kg).



Test Gauge for Checking Condition of Cone Point.

Code: [24-0546](#)

Product Group: [Cone Penetrometer Method, Cone Penetrometer](#)

55 mm diameter by 40 mm deep, with the rim parallel to the flat base.

Standards

BS 1377-2



Penetration Test Cup.

Code: [24-0548](#)

Product Group: [Cone Penetrometer Method, Cone Penetrometer](#)

Brass construction, 55mm dia x 40mm depth to fit BS1377

Standards

BS 1377-2



Rod Comparator

Code: [24-0811](#)

Product Group: [Determination of Plastic Limit, Rod Comparator](#)

3mm diameter rod comparator to BS1377.

Standards

BS 1924-2, EN 1997-2, ASTM D4318, BS 1377, AASHTO T90



Shrinkage Mould to BS 1377

Code: [24-1800](#)

Product Group: [Linear Shrinkage](#)

To produce a specimen 140 mm long x 12.5 mm radius.

Standards

BS 1377



Gas Jar 75mm Dia X 300mm with Glass Cover and Rubber Bung.

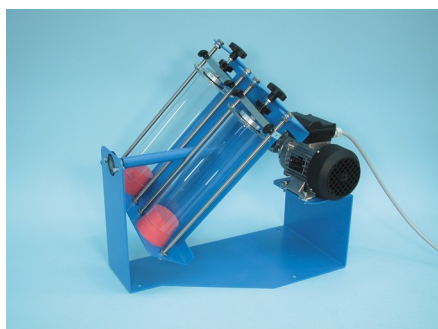
Code: [24-2830](#)

Product Group: [Gas Jar Method](#)

1 litre capacity complete with rubber bung and glass cover.

Standards

BS 1377, EN 1997-2



Mechanical End-Over-End Shaker Ce

Code: [24-2854/01](#)

Product Group: [Gas Jar Method](#)

With Friction Safety Device and Control Panel
220-240V 50/60 Hz 1Ph.

Fitted with friction safety device, capable of rotating two EL24-2830 Gas Jars at approximately 50 rpm to satisfy BS 1377.

Standards

BS 1377, EN 1997-2



Pyknometer Complete with Non-Corrodable Cone and Rubber Seal 1 kg Capacity

Code: [24-2885](#)

Product Group: [Particle Density: Pyknometer
Methods, Pycnometer Top and Jar](#)

Glass jar complete with non-corrodable cone.

Standards

ASTM C128, AASHTO T84



50Ml Density Bottle with Perforated Stopper.

Code: [24-2900](#)

Product Group: [Particle Density: Pyknometer Methods](#)

Supplied complete with capillary vent stopper.
Conforms to BS 733, and ISO 3507. Gay-Lussac type.

Standards

ASTM C128, AASHTO T84



Sodium Hexametaphosphate 500G.

Code: [24-4145](#)

Product Group: [Sodium Hexametaphosphate,](#)
[Mechanical Analysis Stirrer](#)

Standards

ASTM D422, AASHTO T88, ASTM E100



Soil Hydrometer BS EN DD ENV graduated 0.995 to 1.030 g/ml

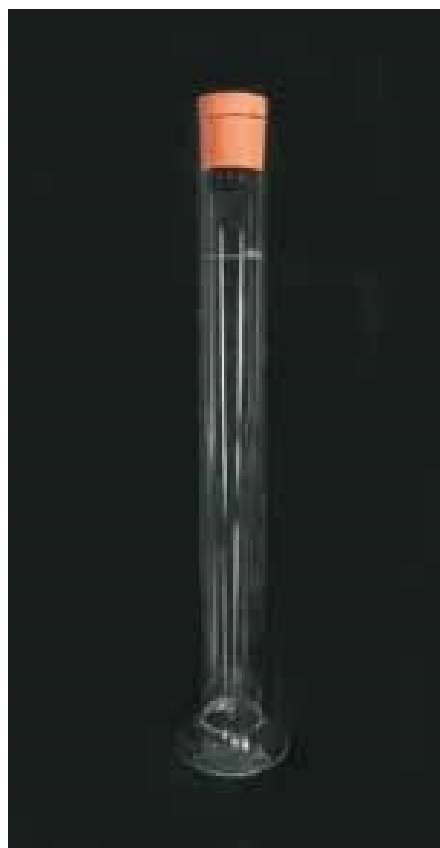
Code: [24-4620](#)

Product Group: [Soil Hydrometers](#)

Graduated 0.995 to 1.030 g/ml.

Standards

ASTM D422, BS 1377, EN 1997-2, ASTM E100, AASHTO T88



Hydrometer Sedimentation Cylinder

Code: [24-4700](#)

Product Group: [Hydrometer Sedimentation Cylinder](#),
[Hydrometer Jar](#)

Glass, 1000 ml capacity complete with rubber bung.

Standards

BS 1337, ASTM D422, AASHTO T88

Further Information

1000ML Glass



Nomographic Chart for The Determination of Stokes Law.

Code: [24-4800](#)

Product Group: [Hydrometer Sedimentation Cylinder](#)

For the determination of Stoke's Law.

Standards

ASTM D422, AASHTO T88



Constant Temperature Bath 5 to 99.9 Deg.C X 0.1 Deg.C with Led Display and False Base Support.

Code: [24-4865/01](#)

Product Group: [Constant Temperature Bath](#)

- Specially designed for Sedimentation of Testing of Soils
- Stainless steel construction with toughened glass front for viewing samples
- Must hold six sedimentation cylinders
- Complies to: BS 1377-2 EN DD ENV1997-2 ASTM D422 AASHTO T88

Further Information

Specially designed for the sedimentation testing of soils and other fine grained material, the bath is supplied with a false bottom to assist in circulation of the bath liquid. Will accommodate six Sedimentation Cylinders.

Specification

Dimensions (l x w x h)	535 x 210 x 610 mm external
Capacity	Holds up to 6 sedimentation cylinders
Construction	Stainless steel with toughened glass front
Temperature Control	Heater/thermostat/circulation with digital controller unit 5 to 99.9 Deg.C X 0.1 Deg.C
Power	1500 watts
Weight kg	12



BS Standard Compaction Mould 1000Cm Capacity.

Code: [24-9000](#)

Product Group: [BS/EN compaction test 2.5kg](#),
[Accessories for BS compaction and CBR](#)

Plated steel standard compaction mould to BS 1377, comprising of a collar mould body and base plate with quick release wing nuts for easy dismantling.

Standards

BS 1377-4, BS 1924-2

Specification

Mould volume	1 litre
Dimensions	105 mm dia x 115.4 mm high
Construction	All steel, threaded studs with wing nuts, plated.
Weight	5.5 kg



Standard Compaction Rammer 2.5kg BS1377

Code: [24-9002](#)

Product Group: [BS/EN compaction test 2.5kg](#)

50mm diameter with 300mm drop, manufactured from corrosion protected steel.

Standards

BS 1377-4, BS 1924-2

Specification

Rammer	50 mm dia, 2.5 kg
Drop	300 mm
Guide Sleeve	Machined steel tubing with air pressure release holes
Finish	Corrosion resistant
Weight kg	4.2



BS Compaction Rammer 4.5Kg Wt.

Code: [24-9004](#)

Product Group: [BS/EN compaction test 4.5kg, Straightedge](#)

50mm diameter with 450mm drop, manufactured from corrosion protected steel.

Standards

BS 1377-4, BS 1924-2

Specification

Rammer	50 mm dia, 4.5 kg
Drop	450 mm
Guide Sleeve	Machined steel tubing with air pressure release holes
Finish	Corrosion resistant
Weight kg	7.5



Cbr-Test 50 Machine 50kN Capacity BS and ASTM Supplied with Stabilising Bar.

Code: [24-9150/01](#)

Product Group: [CBR Load Frames](#)

- Single speed machine (BS/EN and ASTM)
- Rapid platen adjustment
- Complete with stabilising bar
- Compact, bench-mounting design
- Options for mechanical or electronic measurement

Designed for performing laboratory CBR tests to BS 1377, EN13286-47 and ASTM D1883, this bench mounting machine comprises a twin column frame incorporating a motorised drive system. Rapid adjustment of the platen is provided, which enables daylight to be taken up quickly and also close control of application of a seating load.

Standards

BS 1377, BS 1924, EN 13286-47, ASTM D1883, AASHTO T193

Specification

Dimensions (l x w x h)	550 x 400 x 1220 mm
Max vertical clearance	800 mm
Horizontal clearance	255 mm
Platen diameter	133 mm
Platen travel	105 mm
Weight kg	80



Penetration Piston

Code: [24-9182](#)

Product Group: [Penetration Measurement](#)

1.935 mm² (3 in²) area foot of case hardened steel.
Designed to fit all ELE load rings.



Penetration Dial Gauge BS

Code: [24-9186](#)

Product Group: [In-situ CBR](#), [Conversion of In-situ to Laboratory CBR](#), [Penetration Measurement](#)

Complete with rack extensions and chisel edge anvil. 25 mm travel x 0.01 mm divisions.

Standards

BS 1377, BS 1924



Bracket and Adaptor. Dual Purpose Mounting Bracket for CBR Penetration Gauges EL24-9184/EL24-9186

Code: [24-9188](#)

Product Group: [In-situ CBR](#), [Conversion of In-situ to Laboratory CBR](#), [Penetration Measurement](#)

Dual purpose mounting bracket for CBR penetration dial gauges. Allows gauge to be fixed to penetration piston or load ring.

Standards

BS 1377, BS 1924



BS Cbr Mould Body.

Code: 24-9198

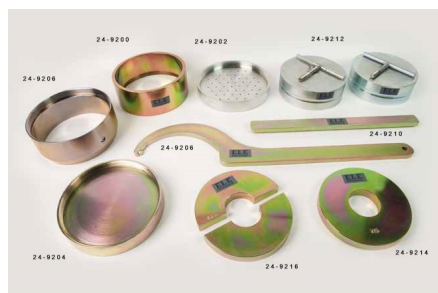
Product Group: BS EN CBR mould, Accessories for
BS compaction and CBR

Standards

ASTM D1883, AASHTO T193

Specification

Mould	152 x 127 mm (inside diameter x height)
Collar	51 mm height, fits both ends of mould
Base plate	Solid, fits both ends of mould
Construction	All steel, plated
Weight kg	7.3



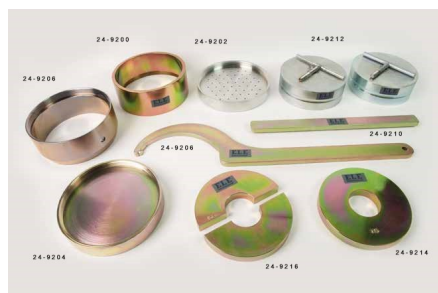
BS Extension Collar

Code: [24-9200](#)

Product Group: [BS EN CBR mould accessories](#),
[Accessories for BS compaction and CBR](#)

Standards

EN 13286-4, BS 1377-4, BS 1924-2



BS Perforated Base Plate.

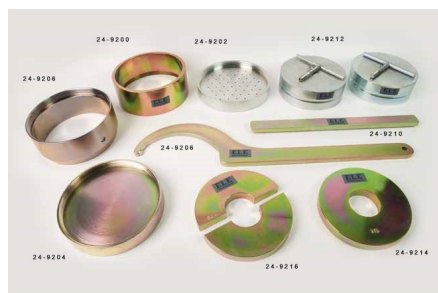
Code: [24-9202](#)

Product Group: [BS EN CBR mould accessories](#)

To fit mould body

Standards

EN 13286-4, BS 1377-4, BS 1924-2



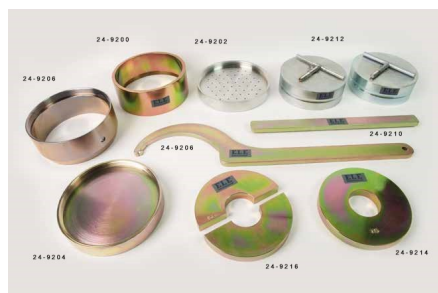
BS Solid Base or Top Plate

Code: [24-9204](#)

Product Group: [BS EN CBR mould accessories](#),
[Accessories for BS compaction and CBR](#)

Standards

EN 13286-4, BS 1377-4, BS 1924-2



Cbr Cutting Collar with Area Ratio of 21.9% to Fit BS Moulds.

Code: [24-9206](#)

Product Group: [BS EN CBR mould accessories](#)

To fit BS/EN mould body.

Standards

EN 13286-4, BS 1377-4, BS 1924-2



C-Spanner for BS Cbr Mould. Two Required.

Code: [24-9208](#)

Product Group: [BS EN CBR mould accessories](#)

To fit BS/EN CBR moulds and collars. Two required.

Standards

BS 1377-4, BS 1924-2, EN 13286-4



Base Plate Tool for BS Mould

Code: [24-9210](#)

Product Group: [BS EN CBR mould accessories](#)

To fit into base plate to assist removal from mould body.

Standards

EN 13286-4, BS 1377-4, BS 1924-2



Static Compaction Plug.

Code: [24-9212](#)

Product Group: [BS EN CBR mould accessories](#)

Steel, 150 mm dia x 51 mm thick. Complete with removable handle.

Standards

EN 13286-4, BS 1377-4, BS 1924-2



2Kg Annular Surcharge Weight

Code: [24-9214](#)

Product Group: [BS EN CBR mould accessories](#)

Standards

EN 13286-4, BS 1377-4, BS 1924-2



2Kg Split Surcharge Weight.

Code: [24-9216](#)

Product Group: [BS EN CBR mould accessories](#)

Standards

EN 13286-4, BS 1377-4, BS 1924-2



Filter Papers 150mm Dia Equivalent to Whatman No 1. Box of 100.

Code: [24-9220](#)

Product Group: [BS EN CBR mould accessories](#)

Box of 100.

Standards

EN 13286-4, BS 1377-4, BS 1924-2



Spacer Disc 5-7/8" Diameter

Code: [24-9237](#)

Product Group: [Spacer Discs](#)

5-7/8" diam. x 2" h. (147.6 x 50.8 mm).

Specification

Construction

Steel; machined on all sides.

Finish

Plated.

Weights

Net 15.4 lbs. (7 kg).



Swell Plate

Code: [24-9260](#)

Product Group: [Expansion \(swell\) Test Equipment, Swell Plate](#)

With adjustable stem.

Standards

ASTM D1883, AASHTO T193

Specification

Base Plate	5 15/16" diam. (150.8mm); perforated.
Contact Head	Adjustable; locks on stem with knurled nut.
Construction	Aluminium
Weight	Net 2-1/2 lbs. (1.1 kg).



Swell Stand

Code: [24-9262](#)
Product Group: [Expansion \(swell\) Test Equipment, Tripod Attachment](#)
For mounting Swell Dial Gauge in position on CBR mould collar.

Standards

ASTM D1883, AASHTO T193

Further Information

Requires dial indicator; not included, order separately

Specification

Construction	Machined, one-piece cast aluminum.
Contact Head	Integral part of ssembly; holds dial indicator.
Construction	2" I. (50.8 mm) included.
Weight	Net 1 lb. (0.4 kg).

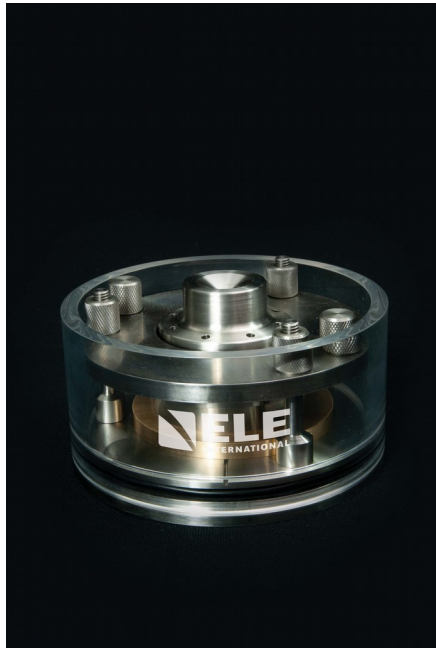


Dial Gauge 25mm Travel X 0.01mm Divisions.

Code: [24-9275](#)

Product Group: [Expansion \(swell\) Test Equipment](#)

25 mm travel x 0.01 mm.

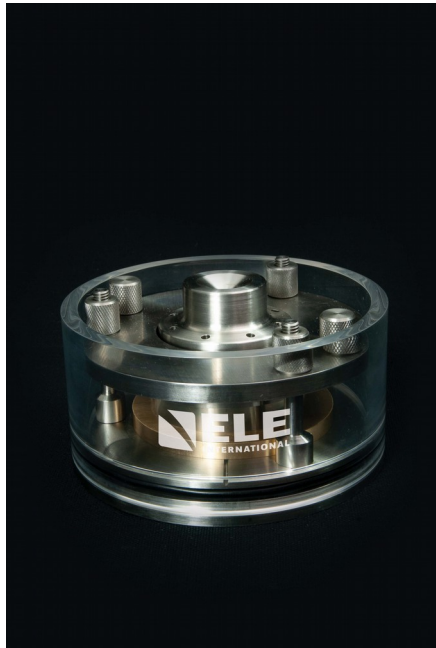


50mm Stainless Steel Consolidation Cell

Code: [25-0446](#)

Product Group: [Stainless Steel Consolidation Cells](#)

- Stainless Steel Construction
- Long lasting
- Includes upper, lower porous discs and cutting ring
- Complies to ISO 17892-5 and BS 1377-5



75mm Stainless Steel Consolidation Cell

Code: [25-0467](#)

Product Group: [Stainless Steel Consolidation Cells](#)

- Stainless Steel Construction
- Long lasting
- Includes upper, lower porous discs and cutting ring
- Complies to ISO 17892-5 and BS 1377-5



AUTO Soils Consolidator

Code: 25-0500/09

Product Group: AUTO Soils Consolidator, AUTO Soils Consolidator

Designed and engineered for geotechnical laboratories to deliver new levels of efficiency in testing procedures.

The one-dimensional consolidation test is the most common, and sometimes referred to as the oedometer or incremental loading oedometer test. Radially constrained samples are loaded in a sequence starting with a stress close to the overburden pressure of the sample. The loading is then doubled for each stage; typically 4 or 5 times, with a final unloading sequence.

FEATURES:

- Available in one universal model 90-240 V AC, 50-60 Hz, 1 ph
- 7" waterproof, colour, graphical touchscreen
- Multi language
- No compressor - stepper motor improves accuracy across entire 15 kN load range
- Variable speed to suit sample type
- Can change target loads during a test
- Flexible reports
- Compatible with latest DS8 software

CUSTOMER BENEFITS:

- Fully automatic - reduces testing time
- Compact footprint - saves laboratory space
- Save configurations for easy set-up of multiple cells and repeat tests
- Control up to 16 AUTO Soils Consolidator machines from one PC - improves laboratory efficiency
- Ability to include manual consolidation frames - avoids redundancy
- Wide range of sample cells

Please note: S type load cell and a linear variable displacement transducer (LVDT) must be ordered

seperately

Specification

Frame capacity	15 kN
Travel	15 mm
Standards	BS 1377-5, superseded by ISO 17892-5, ASTM D2435/D2435M, AASHTO T216, ASTM D4546
Cell sizes (mm)	35, 50, 70, 75, 100, 112.8
Cell sizes (inches)	2, 2.416, 2.5, 3, 4
Max sample size	≤ 112.8 mm
Max piston travel	26 mm
Speed	10 mm per minute
Fast approach speed	40 mm per minute
Max number of units per PC	16
Unit display	High resolution, 7" colour
Dimensions	290 x 360 mm
Weight	32 kg
Clearance vertical/Horizontal	270/220 mm
Power supply	90-240 V AC, 50-60 Hz, 1 ph



Silicon Grease Lubricant.

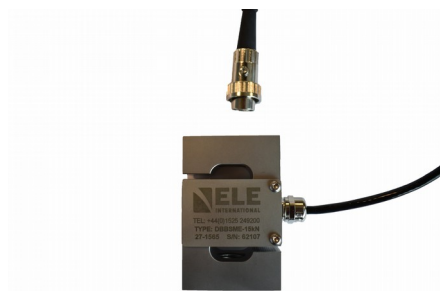
Code: [25-8090](#)

Product Group: [Aggressive Materials](#)

Silicon Grease Lubricant (Tube).

Standards

BS 1377, ASTM D2850, ASTM D4767, AASHTO T296, AASHTO T297



15 kN S Type Load Cell (lead 0.7 m)

Code: [27-1565](#)

Product Group: [AUTO Soils Consolidator](#), [AUTO Soils Consolidator](#)

Used for AUTO Soils Consolidator (25-0500/09)

Specification

Excitation	10 V
Output	3.6mV/V nominal
Capacity	15 kN (3400lbf)
Fixing	M16
Weight	0.9 kg (2lbs)
Connection	0.7 m 5W DIN



15 mm Displacement Transducer (lead 0.7 m)

Code: [27-1650](#)

Product Group: [AUTO Soils Consolidator](#), [AUTO Soils Consolidator](#)

Used for AUTO Soils Consolidator (25-0500/09)

Specification

Excitation	10V
Output	2.3mV/V nominal
Capacity	15 mm (0.6 inch)
Diameter	19 mm
Weight	0.3 kg (0.7lbs)
Connection	0.7 m 5W DIN



DS8.0 One-Dimensional Consolidation Software

Code: 27-1873

Product Group: [Automatic Consolidation Software](#),
[Automatic Consolidation Software](#)

The AUTO Soils Consolidator has been launched alongside the latest version of ELE's DataSystem soil test management software which is loaded with the current BS, ASTM and AASHTO standards, and is compliant with Windows 10.

By automating the test procedure, DS8 lowers the cost of testing and frees staff time for other work. For example, manual systems rely on a user being available immediately when each step is completed, which causes inevitable delays. The AUTO Soils Consolidator also speeds up test times by simplifying the set-up procedure; intuitively taking the operator through the procedure, ensuring that the correct standard is applied and that the set-up is appropriate for the sample and cell. Loading and unloading increments can be defined by users and configuration templates can be stored so that subsequent tests can be set up quickly and easily. With Ethernet connectivity, DS8 is able to manage up to 16 machines simultaneously, so with a small footprint it is simple to set up and run a comprehensive geotechnical testing facility in a small laboratory. This connectivity also enables users to monitor tests remotely 24/7, and also provides an opportunity for remote service diagnostics. Real-time graphical outputs are available in the DS8 software, and operators now have the ability to make changes to tests as they proceed; target loads for subsequent stages can now be changed after a test has started, without having to restart the test from the beginning. The reporting capability of DS8 has been significantly expanded over previous versions. For example, users now have the ability to select consolidation plots to be included in the report, and templates can be slightly modified with results presented in a customisable pdf format.



Pocket Penetrometer.

Code: 29-3729

Product Group: [In-situ Testing](#), [Pocket Penetrometer](#), [Plate Bearing Apparatus](#)

- Direct-reading scale in tons/sq. ft. and kg/sq. cm.
- Ground and polished stainless steel loading piston.
- Calibrated spring and penetrometer body plated for rust resistance and long life.
- Convenient belt-loop style carrying case.
- Optional Adapter Foot for testing very soft materials.

The Pocket Penetrometer was originally developed for use by field personnel in checking visual classification of soils. Data was compiled on several thousand unconfined compressive strength tests of silty clays and clayey soils against the penetrometer readings to develop the scale.

Further Information

IMPORTANT: the readings obtained from the pocket penetrometer do not replace laboratory test results due to the fact that a small area penetration test is inherently liable to give misleading results. The instrument should not be used for obtaining foundation design data.

Specification

Range	0.25 to 4.5 tons/sq. ft. (kg/sq. cm).
Scale Divisions	0.25 tons/sq. ft. (kg/sq. cm).
Load Piston	1/4" (6 mm) diam.; stainless steel.
Carrying Case	Canvas; belt-loop style.
Dimensions	3/4" diam. x 6-3/8" l. (19 x 162 mm).
Weight	Net 7 oz. (198 g).



Proving Ring Penetrometer

Code: [29-3739](#)

Product Group: [Proving Ring Penetrometer](#)

Further Information

250 psi capacity

Specification

Proving Ring	250 lb. (1.1 kN) capacity.
Dial Indicator	Brake type.
Shaft	3/4" (19 mm) diam. x 18" l. (457 mm); graduated at 6" (152 mm) intervals.
Extension Rod	3/4" (19 mm) diam. x 36" l. (914 mm); graduated at 6" (152 mm) intervals.
Cone	30 degree; 1 sq. in.; replaceable.
Handle	Cast aluminum.
Weight	Net 12 lbs. (5.4 kg).



Soft Headed Mallet.

Code: [29-5020](#)

Product Group: [Field density tools](#)



Tamping Rod 16mm Dia X 600mm long hemispherical at both ends.

Code: [34-0130](#)

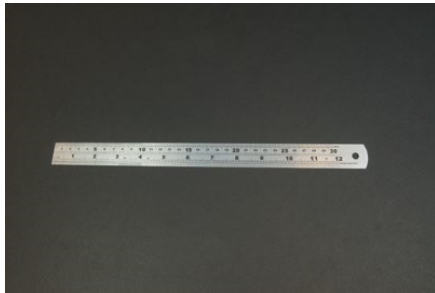
Product Group: [Precision Air Entrainment Meter, Slump Test, Accessories for Concrete Moulds](#)

Steel, 600 mm long x 16 mm dia, hemispherical at both ends.

Please note this item is not graduated.

Further Information

****NOT AVAILABLE FOR SALE IN THE USA****



300 mm Stainless Steel Rule.

Code: [34-0140](#)

Product Group: [Slump Test](#)

Standards

EN 12350-2

Further Information

****NOT AVAILABLE FOR SALE IN THE USA****



Slump Test Set BS & ASTM. C/W Slump Cone Base Plate Steel Rule Tamping Rod & Funnel.

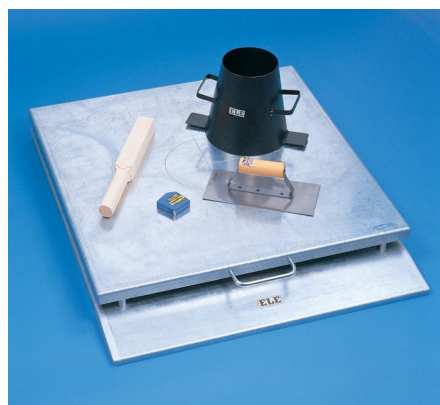
Code: [34-0192](#)

Product Group: [Slump Test](#)

BS and ASTM comprising of slump cone, base plate, steel rule, tamping rod and funnel.

Further Information

****NOT AVAILABLE FOR SALE IN THE USA****



Apparatus for Determining Flow In Concrete (Flow Table).

Code: 34-0450

Product Group: Flow Table

Comprising of mould, flow table, tamper, metre rule, float and stopwatch

Standards

EN 12350-5

Further Information

****NOT AVAILABLE FOR SALE IN THE USA****



Bulk Density Measure 30 Litre

Code: 34-2800

Product Group: Bulk Density Measures, Fresh Concrete - Bulk Density Measures

Manufactured from heavy gauge steel these bulk density measures comply with the requirements of either BS 812 or ASTM C-29. Other than the 3 litre size, all measures incorporate carrying handles as standard.

Complies to: ASTM C138, ASTM C29, BS 812, EN 1097-3, EN 12350-6

Standards

BS 812, EN 1097-3, EN 12350-6, ASTM C138

Further Information

****NOT AVAILABLE FOR SALE IN THE USA****

For other bulk density measures see the aggregates section



Bulk Density Measure 15 Litre

Code: [34-2820](#)

Product Group: [Bulk Density Measures, Fresh Concrete - Bulk Density Measures](#)

Manufactured from heavy gauge steel these bulk density measures comply with the requirements of either BS 812 or ASTM C-29. Other than the 3 litre size, all measures incorporate carrying handles as standard.

Complies to ASTM C138, ASTM C29, BS 812, EN 1097-3, EN 12350-6

Further Information

****NOT AVAILABLE FOR SALE IN THE USA****

For other bulk density measures see the aggregates section



Compacting Bar 25mm Sq X 380mm

Code: [34-2910](#)

Product Group: [Accessories for Concrete Moulds,](#)
[Precision Air Entrainment Meter](#)

Steel, 380 x 25 mm (length x square) tamping area,
EN/BS.

Standards

EN 12390-1



Air Entrainment Meter B Type Complete with Carrying Case. Supplied with Aluminium Tamping Bar.

Code: **34-3265**

Product Group: **Precision Air Entrainment Meter, Precision Air Entrainment Meter**

- 7 litre capacity
- Shock-proof pressure gauge mounting
- Lightweight aluminum construction
- Heavy-duty plastic carrying case for easy transport to site

The proper control of entrained air in concrete is recognized as one of the most important functions in modern concrete manufacture. For the concrete engineer, the ELE Precision Air Entrainment Meter offers an instrument for the testing and designing of concrete mixes.

The instrument is designed so that the operating parts form an integral unit. The container is rigid, thus providing an accurate device for the performance of unit weight testing. For convenience, the tare weight in grams is stamped on the bottom. When used with the nomograph supplied within the operating instructions, the air meter provides quick and easy particle density and percent of free moisture in aggregate determinations.

Complies with BS 1881-106 EN 12350-7 ASTM C231

Standards

ASTM C231, AASHTO T152

Specification

Capacity	7 Litres
Readings	Up to 22% entrained air
Accuracy	1/4% full scale
Aggregate Size	2" (50.8 mm) maximum
Container	With tare weight stamped on bottom; 2-piece clamping device for positive seal.
Water	4 oz required
Initial Pressure	Approx. 10 strokes needed
Pressure Gauge	In shock-proof mounting
Tamping Rod	Aluminium; 24" (610 mm) long
Dimensions	9-3/4" diam. X 13-1/4" h. (248 x 337 mm)
Weight	Net 15 lbs (8 kg)



100mm Cube Mould 4-Part Clamp Type. Cast Iron Construction. BS EN Compliant.

Code: [34-4520](#)

Product Group: [Cube Moulds](#), [Cube Moulds](#)

4-part with clamp attached base plate.

Standards

EN 12390-1, EN 12390-2

Specification

Construction

Bolted sides and clamped base
plate

Finish

Painted

Weight

20 lb (9.1 kg)



150mm Cube Mould 4-Part Clamp Type. Cast Iron Construction. BS EN Compliant.

Code: [34-4570](#)

Product Group: [Cube Moulds](#), [Cube Moulds](#)

4-part with clamp attached base plate.

Standards

BS 1881-108, EN 12390-1, EN 12390-2

Specification

Construction	Bolted sides and clamped base plate
Finish	Painted
Weight	42 lb (19.1 kg)



150 X 150 X 750mm Beam Mould.

Code: [34-5053](#)

Product Group: [Beam Moulds](#)

Complete with base plate

Weight 43 kg

Standards

EN 12390-1, EN 12390-2

Further Information

****NOT AVAILABLE FOR SALE IN THE USA****



Melting Pot 4 Litre Capacity. 50 to 300 Deg. C. Temperature Range.

Code: [34-6122/01](#)

Product Group: [Melting Pot](#)

This unit is suitable for melting wax and capping compound and comprises a metal container in a welllagged steel jacket. A thermostatic control and stand-by heat switch are fitted. Supplied complete with lift-off cover.

Standards

BS 1377-1

Further Information

****NOT AVAILABLE FOR SALE IN THE USA****

for 220 - 240 V AC, 50 - 60 Hz, 1 ph.

Specification

Internal Dimensions (diameter x depth)	140 x 150 mm
External Dimensions (diameter x depth)	250 x 165 mm
Capacity	4 litres
Rated Power	300 watt
Temperature range	50 to 300°C
Weight	7 kg
Internal Dimensions (diameter x depth)	140 x 150 mm
External Dimensions (diameter x depth)	250 x 165 mm
Capacity	4 litres
Rated Power	300 watt
Temperature range	50 to 300°C
Weight	7 kg



Buoyancy Balance 16Kg X 0.1G

Code: [34-8100/09](#)

Product Group: [Hardened Concrete - Buoyancy Balance, Percentage Refusal Density \(PRD\)](#)

Includes:

- Lifting frame for Buoyancy balances
- Expansion tank 4 gallon capacity
- Electronic Balance 16kg x 0.1g with auto density calculation

Standards

EN 12697-32, EN 13280-4, BS 598-104

Further Information

****NOT AVAILABLE FOR SALE IN THE USA****



Cradle

Code: [34-8105](#)

Product Group: [ELE Bouyancy Balance](#), [Hardened Concrete - Buoyancy Balance](#), [Percentage Refusal Density \(PRD\)](#)

Standards

EN 12697-32, EN 13280-4, BS 598-104, EN 1097-6



Standard Concrete Test Hammer

Code: [35-1480](#)

Product Group: [Concrete Test Hammer, Surface Hardness](#)

The hammer is intended for testing the quality of concrete in finished structures such as buildings and bridges. Supplied complete with carrying case and carborundum stone, the hammer is suitable for testing concrete with compressive strengths of 10 to 70 N/mm².

Standards

ASTM C805

Specification

Body	Includes indicator scale, calibration curves.
Calibration Curves	Rebound number vs. compressive strength.
Rubbing Stone	Prepares test surface.
Accuracy	Within 15 %.
Carrying Case	Plastic.
Weight	Net 3 lbs. (1.4 kg).



Ultrasonic Concrete Tester 110-240V 50/60Hz 1Ph

Code: 35-2302/09

Product Group: Ultrasonic Detection, Ultrasonic
Concrete Test

35-2302/09 is the most versatile Concrete Tester to date. It has all the functions of the classic Concrete Tester, but offers additional benefits.

Designed with laboratory use in mind, its compact size, rugged construction and optimized power consumption make it equally suitable for on-site use.

Along with the traditional transit time and pulse velocity measurement, 35-2302/09 offers path length measurement, perpendicular crack depth measurement and surface velocity measurement.

Optimized pulse shaping gives greater transmission range at lower voltage levels. This coupled with automated combination of the transmitter voltage and the receiver gain ensures an optimum received signal level, ensuring accurate and stable measurements.

The waveform can be viewed either via an external oscilloscope connection or directly on a connected PC screen.

Full remote control capability completes the package.

Complete with two 54 kHz transducers each with 3.6 metres of cable, coupling agent, carrying case and instruction manual.

Applications include pulse velocity determination, quality assessment and uniformity, modulus of elasticity measurement, curing status evaluation, crack depth estimation, assessment of fibre reinforced concrete.

Consists of display unit, 2 transducers (54 kHz), 2 BNC cables 1.5m, couplant, calibration rod, USB charger with USB-cable, 4x AA (LR6) batteries, data carrier with software, documentation and carrying case.

Standards

BS 1881-203, EN 12504-4, ASTM C597, D2845

Further Information

For 110 - 240 V AC, 50 - 60 Hz, 1 ph.

Specification

Measuring range	Up to 15 m depending on concrete quality
Bandwidth	20 to 500 kHz
Technology	Ultrasonic pulse velocity
Measuring resolution	0.1 us
Pulse voltage UPV	125 to 500 V
Receiver gain	1x, 10x, 100x, auto
Pulse shape	Square wave
Nominal transducer frequency	24-500 kHz
Number of channels	1



Crack Detection Microscope Magnification X 40 Measuring Range of 4mm In 0.02mm Divisions

Code: 35-2505

Product Group: Crack Detection, Crack Detection
Microscope

Specifically designed for measuring crack width in concrete, this high definition microscope operates via an adjustable light source provided by high power batteries.

Supplied in a pocket sized carrying case.

Specification

Magnification	X 35 .
Measuring Range	4 mm.
Divisions	0.02 mm.
Dimensions	1.5" x 3.5" x 6" (40 x 90 x 150 mm) in case.
Weight	Net 19.4 oz. (550 g).



ADR Touch SOLO 2000 BS EN Compression Machine with Digital Readout and Self Centring Platens.

Code: 36-3280/01

Product Group: BS EN Compression Machines

The ADR Touch range of 2000 kN and 3000 kN capacity compression machines has been designed to meet the need for reliable and consistent testing. The load frame is a welded steel fabrication carrying the ball-seated upper platen. Positively located on the loading ram, which is protected from debris by a flexible cover, the lower platen is marked for the centring of cube and cylinder specimens. Self-centring lower platens for cube location are supplied as standard on EN machines and are available as an optional extra on the standard machine. The two machines for cube testing to EN standards are assembled and aligned using a special compression frame stability tester.

The dimensions of the frame allow the testing of concrete cylinders up to 320 mm long x 160 mm diameter, 150 and 100 mm square cubes, and on EN/BS machines, 200 mm square cubes. Kerbs and flagstones may also be tested on ADR machines as well as 150 mm and 100 mm square section beams to ASTM C78 using the optional 100 kN flexural frames which are connected to the power pack.

Standards

EN 12350-6, NF P18-411

Further Information

****Not available for sale in the USA****

ADR Touch BS EN 2000 and 3000 kN compression machines are supplied complete with self-centring lower platen and safety gates fitted with interlock switches ready for testing 300 x 150 mm diameter cylinders.

Whilst delivering all the features and reputation of the established ADR Series with its extensive design history, the new and improved user interface provides a high quality platform for testing that enhances the performance of ELE's compression machines.

New, sophisticated electronics further the benefits of simplified operation, whilst delivering the highest levels of accuracy in testing concrete and cement/mortar samples, satisfying the needs of Quality Control Managers, Lab Managers and Technicians.

ACCURACY & SAVINGS

The new ADR Touch Series, with 145mm (5.7") high resolution QVGA touch screen interface and intuitive menu-driven operation, reduces the time taken to set up the machine and perform tests, reducing the time to train staff by up to 25%.

- Up to 6 sample types can be set as favorites, enabling one-touch set up for repeat testing.
- Full, QWERTY touch pad for input of test data.

Most testing errors produce lower strength results. Noncompliant loading rates can generate errors in measured strength. The user interface includes real-time display of load vs. time, further ensuring accurate and consistent test results and providing "goodness of test" data to improve traceability in your QC operations.

TRACEABILITY & DATA QUALITY

The ADR range now provides improved data quality and traceability in due diligence cases - it is now possible to demonstrate traceability all the way from the machine/user to the accreditation body, increasing your reputation and peace of mind - all test results now come complete with the machine serial number attached.

- Enhanced USB data communications between PC and machine - eliminating the need for download software.
- Two gigabytes of storage memory.
- Full customization of sample sizes - stress calculations are automatically recalculated.

USER SAFETY

With full safety gates as standard, total systems diagnostics, ram run-out switches and overload warnings ensure the safety of your employees and the reliability of your machine.

Specification

Testing Standards	BS EN 12390-4, BS EN 12390-3, BS EN 12390-4, BS EN 12390-5, EN 12504-1, EN 1354, EN 1521, EN 3161, EN 1338, EN 772-6, EN 13286-41, BS 3892-3, BS 187, BS 6717, BS EN ISO 7500-1, ASTM E4
Capacity	2000 kN
Cubes (Concrete)	Up to 200 mm
Cylinders (Concrete)	Up to 160 x 320 mm
Blocks	Via optional Platen Handling System
Flexural Testing	Via Flexural Frame
TFV and ACV	Yes
Voltage Supply	220-240V 50/60 Hz 1Ph.
Frame Class (Stability)	Tested
Frame Type	Welded
Max vert. Clearance	340 mm
Max hor. Clearance	355 mm
Platen Sizes	Lower 220mm sq, Upper 300mm dia
Max Ram Travel	50 mm



EN 12390-3/4 Distance Piece - 20 mm Depth

Code: [37-5110](#)

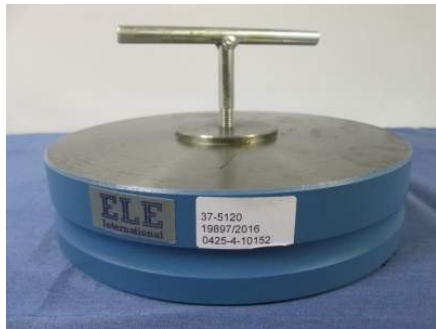
Product Group: [Distance Pieces](#)

Standards

EN 12390-3, BS 1881-115

Further Information

****Not available for sale in the USA****



EN 12390-3/4 Distance Piece - 50 mm Depth

Code: [37-5120](#)

Product Group: [Distance Pieces](#)

Standards

EN 12390-3, BS 1881-115

Further Information

****Not available for sale in the USA****



EN 12390-3/4 Distance Piece - 80 mm Depth

Code: [37-5170](#)

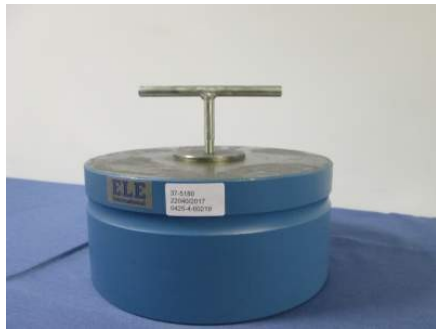
Product Group: [Distance Pieces](#)

Standards

EN 12390-3, BS 1881-115

Further Information

****Not available for sale in the USA****



EN 12390-3/4 Distance Piece - 100 mm Depth

Code: [37-5180](#)

Product Group: [Distance Pieces](#)

Standards

BS 1881-115, EN 12390-3

Further Information

****Not available for sale in the USA****



100kN Flexural (Beams) Frame. Supplied Without Specimen Bearers and Fitting Kit.

Code: 37-6130

Product Group: [Flexural Testing for Beams, Flexural Frame Attachments](#)

- Open sided for ease of specimen loading
- Meets EN 12390-5, 1521, 13161, 772-6 and ASTM C78 for standard section beams
- Optional ball seating assembly

This rigidly constructed, open sided frame is suitable for testing 100 mm and 150 mm square-section beams. The frame supports a hydraulic ram and upper sub-platen assembly incorporating a spherical seating. The upper and lower sub-platens will accept various specimen loading bearers, which are supplied separately.

Please note, a flexural fitting kit is required, see the accessories tab for options.

Standards

BS 1881-118, EN 12390-5



BS 1881 Specimen Bearer Assembly 38mm Dia X 160mm Length.

Code: [37-6131](#)

Product Group: [Flexural Testing for Beams](#)

Comprising 2 self-aligning upper bearers, 1 self-aligning and 1 fixed lower bearer. Roller bearers are 38 mm diameter x 160 mm long. Suitable for 3- or 4-point flexural testing of beams.

Standards

BS 1881-118, EN 12390-5

Further Information

****Not available for sale in the USA****



100kN Flexural Fitting Kit (ADR) Used for Connecting Flexural Frames to ADR Compression Machines.

Code: [37-6138](#)

Product Group: [Accessories to connect ELE compression machines to the flexural/transverse frames](#)

These flexural frames can be used with a wide range of ELE compression machines. Simply select one of two fitting kits designed to link the flexural frame to either the ADR-Auto range of compression machines or any other ADR compression machine.

Further Information

Not available for sale in the USA



Flakiness Gauge.

Code: [42-0410](#)

Product Group: [Flakiness Sieves and Gauges](#)

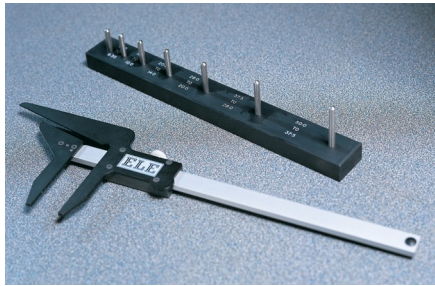
Constructed of heavy gauge sheet steel to the dimensions specified in BS 812.

Standards

BS 812

Further Information

****NOT AVAILABLE FOR SALE IN THE USA****



Length Gauge

Code: [42-0820](#)

Product Group: [Elongation Index](#)

Manufactured to the dimensions specified in BS 182.

Standards

BS 812-105

Further Information

NOT AVAILABLE FOR SALE IN THE USA



Wire Basket Brass with Handle Nominal 6000Cm³ Capacity with 1.7mm Wire Mesh.

Code: 42-1005

Product Group: Particle Density (specific gravity) and Water Absorption for Coarse Aggregates

Relative Density 200 mm diameter x 190 mm deep, 1.70 mm wire mesh.

Complies to EN 1097-6, EN 12697-6, BS 812, ASTM C127, AASHTO T85

Standards

EN 1097-6, EN 12697-6, BS 812, ASTM C127, AASHTO T85

Further Information

NOT AVAILABLE FOR SALE IN THE USA



Sand Absorption Cone

Code: 42-1700

Product Group: [Particle Density \(specific gravity\) and Water Absorption for Fine Aggregates, Sand Absorption Cone and Tamper](#)

Made of brass to the dimensions given in BS 812, ASTM C128 and AASHTO T84.

Standards

BS 812, ASTM C128, AASHTO T84



Tamping Rod

Code: 42-1720

Product Group: Particle Density (specific gravity) and Water Absorption for Fine Aggregates, Sand Absorption Cone and Tamper

For use with cone. Tamping face is 25mm diameter and complies with BS 812, ASTM C128 and AASHTO T84.

Standards

BS 812, ASTM C128, AASHTO T84



Bulk Density Measure 3 Litre.

Code: [42-1995](#)

Product Group: [Bulk Density Measures](#)

3 litre capacity

Standards

BS 812, ASTM C29

Further Information

****NOT AVAILABLE FOR SALE IN THE USA****



Bulk Density Measure 7 Litre

Code: [42-2000](#)

Product Group: [Bulk Density Measures](#)

Manufactured from heavy gauge steel these bulk density measures comply with the requirements of either BS 812, EN 1097-3, 12350-6 or ASTM C138. All measures incorporate carrying handles as standard. The measures are coated against corrosion.

Standards

BS 812

Further Information

****NOT AVAILABLE FOR SALE IN THE USA****



Quantab Chloride Titrator Type 1175
Titration Range 0.005% - 0.1% 30-600ppm
NaCl Pack of 40 Strips.

Code: [42-2950](#)

Product Group: [Chloride Content: Rapid Method](#),
[Chloride Content: Rapid Method](#)

Type 1175 titration range 0.005% to 0.1% (30 to 600 ppm) NaCl. Pack of 50.



Quantab Chloride Titrator Strips Type 1176 Titration Range 0.05%-1% (300-6000 ppm) NaCl Pack of 40

Code: [42-2952](#)

Product Group: [Chloride Content: Rapid Method](#),
[Chloride Content: Rapid Method](#)

Type 1176 titration range 0.05% to 1% (300 to 6000 ppm) NaCl. Pack of 40.



Sulphate Test Strips

Code: [42-2958](#)

Product Group: [Sulphate Content: Rapid Method](#)

Detection range 200 to 900 mg/l. Pack of 100.



Aggregate Impact Value Apparatus Complete with 16mm Dia X 600mm Long Rod

Code: [42-4000](#)

Product Group: [Aggregate Impact Value \(AIV\)](#),
[Aggregate Impact Value \(AIV\)](#)

Heavy duty construction, heavily plated assembly
ensures corrosion resistance.

Standards

BS 812-112

Further Information

****NOT AVAILABLE FOR SALE IN THE USA****



150mm Aggregate Crushing Value Apparatus. Supplied Complete with Metal Measure and Tamping Rod.

Code: 42-4300

Product Group: [Aggregate Crushing Value \(ACV\) and Ten Percent Fines Value \(TFV\)](#)

Comprising of 150 mm nominal diameter steel cylinder, plunger and base plate supplied complete with metal measure and tamping rod.

Standards

BS 812-112

Further Information

****NOT AVAILABLE FOR SALE IN THE USA****



Set of 12 Abrasive Charges (ASTM).

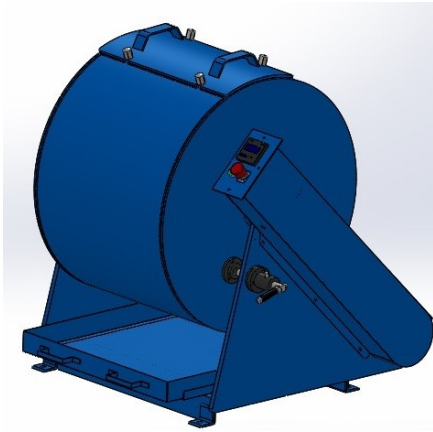
Code: [42-5300/10](#)

Product Group: [Los Angeles Abrasion Machine](#), [Los Angeles Abrasion Machine](#)

ASTM Set of 12.

Standards

EN 1097-2, ASTM C131, ASTM C535, AASHTO T96



Los Angeles Abrasion Apparatus

Code: 42-5315/01

Product Group: N/A

The Los Angeles Abrasion comprises a heavy steel cylinder, rotated about its horizontal axis. The cylinder incorporates a removal internal shelf. Two alternative shelf positions are provided, one for ASTM and one for the EN test method. The Los Angeles Abrasion Machine's heavy duty steel cylinder is manufactured from structural steel plate. The filling aperture is provided with a cover. The machine is fitted with a digital revolution counter and steel tray for specimen unloading. It is also supplied with one set of abrasive charges as standard.

Applicable standards:

- ASTM C 131
- C535
- EN 1097-2
- AASHTO T96

Optional accessories: Abrasive charge, consisting of a set of 12 hardened steel balls of 48 mm dia.

Available in 220 V, 50Hz and 220 V, 60Hz.



Digital pH/Temp/mV Meter with electrode, carrying case and pH 4 & 7 buffers

Code: 430-020

Product Group: Paqualab Test Meters

Robust waterproof case offering IP66/67 protection

Manual/automatic temperature compensation

Easy to use re-calibration function

The 430-020 pH meter is a three-in-one instrument that features a large easy to read, LCD display that indicates pH over the range of -2 to 16 pH with a resolution of 0.01 pH, mV over the range of -1000 to 1000 mV and temperature over the range of -39.9 to 149.9°C with a resolution of 0.1°C. The LCD display features both low battery indication and a user selectable backlight.

The pH readings are either manually or automatically temperature compensated over the range of 0 to 100°C. To automatically compensate, it is necessary to utilise a thermistor temperature probe. Each unit incorporates an auto-power off facility that automatically turns the instrument off after ten minutes, maximising battery life.

The 430-020 has an integrated rubber seal to ensure complete water resistance and helps to reduce the possibility of damage in harsh environments. At the touch of a button, the instrument will automatically re-calibrate (two-point autocal) itself when used in conjunction with pH buffer solutions.

Each unit incorporates an easy to use BNC connector and Lumberg screw-locking type connector.

Further Information

Specification

Range	Resolution	Accuracy
-2 to 16 pH	0.01 pH	± 0.02 pH
± 1000 mV	1 mV	± 1 mV
-39.9 to 149.9 °C	0.1 °C	± 0.4 °C (-10 to 70 °C)
Battery	3 x 1.5 volt AAA	
Battery Life	Maximum 5 years (2500 hours)	
Sensor Type	Combination electrode/ thermistor	
Display	12 mm LCD	
Dimensions	32 x 71 x 141mm	

Product Sheet

www.ele.com
+44 (0) 01525 249 200



Weight

230 grams



Filter Discs Pack of 100

Code: [45-3803](#)

Product Group: [Asphalt Centrifuge Extractors](#)

Outer dia: 248 mm

Hole dia: 44 mm

Capacity: 1500 g

Qty per pack: 100

Equivalent grade to Whatman No.182

Standards

EN 12697-1, ASTM D2172, AASHTO T164

Further Information

****NOT AVAILABLE FOR SALE IN THE USA****



Rotatest 1500

Code: 45-3810/01

Product Group: Asphalt Centrifuge Extractors

Centrifuge extractor used to determine the quantitative amount of bitumen in bituminous paving mixtures. Variable speed control from 0 to 3600 rpm through the front panel mounted control knob and brake control included for rapid deceleration.

Precision machined aluminium removable cover with integral cup for adding solvent, with sealed cast aluminium housing. Centrifuge extractor used to determine the quantitative amount of bitumen in bituminous paving mixtures. Variable speed control from 0 to 3600 rpm through the front panel mounted control knob and brake control included for rapid deceleration.

Precision machined aluminium removable cover with integral cup for adding solvent, with sealed cast aluminium housing.

Standards

EN 12697-1, ASTM D2172, AASHTO T164

Further Information

****NOT AVAILABLE FOR SALE IN THE USA****

1500 g capacity. Supplied with 100 Filter Discs. For 220 V AC, 50 - 60 Hz, 1ph.



Isomantle Electric Heater

Code: [45-5580/01](#)

Product Group: [Sample Mixers](#), [Mixing](#), [Sample Mixers](#)

For use with 23-6191 Bench Mounting Mixer.

Standards

EN 12697-35

Further Information

****NOT AVAILABLE FOR SALE IN THE USA****



Compaction Mould

Code: 45-6310

Product Group: Accessories for manual and automatic compaction, Asphalt Compaction Mould

Comprising of mould body, baseplate and combined filling/extraction collar.

Standards

EN 12697-30, ASTM D6926, AASHTO T245

Specification

Construction	Machined seamless steel forming mold; base and collar.
Finish	Plated for rust resistance.
Dimensions	4" (101.6 mm) i.d. x 3" (76.2 mm) internal h. with base.
Weight	Net 6 lbs. (2.7 kg).



Paper Discs

Code: [45-6462](#)

Product Group: [Accessories for manual and automatic compaction, Filter Paper Discs](#)

Non-absorbent, 99 mm diameter, pack of 100.

Standards

EN 12697-30

Specification

Weight

Net 2.9 oz. (82 g).



30 L Heating Bath with Led Display Cover

Code: [45-6550/01](#)

Product Group: [Accessories for manual and automatic compaction](#)

Water Bath with LED display, cover and internal perforated shelf. Temperature range ambient to 60°C \pm 5°C.

Standards

BS 2000-49, EN 1426, EN 13179-2, ASTM D5, AASHTO T49, IP 49

Further Information

****NOT AVAILABLE FOR SALE IN THE USA****



AutoComp 100-A

Code: 45-6600/01

Product Group: Automatic Compaction

Fully automatic, simple to operate
Built-in safety features
Uniform compaction
Automatic blow counter

Complies to BS 598-107

This ruggedly constructed automatic compactor provides a consistent and even degree of compaction. The unit incorporates a compaction pedestal comprising a laminated hardwood block secured to a concrete base by a 300 mm square x 25 mm thick steel plate. The mechanism lifts the 4535 g hammer and automatically releases it at the specified height of 457 mm. The conveniently positioned control fascia panel comprises of a mains light, start and stop buttons and a direct-reading counter used to set the required number of blows.

During operation the AutoComp 100-A automatically counts down to zero. Dual rammer pick-ups have been incorporated, reducing stress on the machine's internal mechanism. Particular attention has been paid to operator safety by the inclusion of various in-built safety features.

Standards

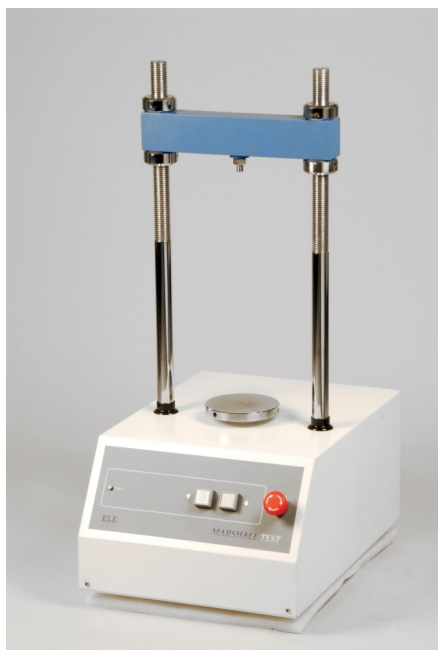
EN 12697-10, EN 12697-30, BS 598

Further Information

NOT AVAILABLE FOR SALE IN THE USA

Specification

Dimensions (l x w x h)	535 x 535 x 1880 mm
Compaction foot diameter	98.52 mm
Sliding weight	4535 g
Height of drop	457 mm
Weight	278 kg



Marshall Test 50

Code: [45-6810/01](#)

Product Group: [Marshall Load Frames](#)

- Geared screwjack and motor drive
- Precise speed
- Internal limit switch for both directions of travel
- Easy to use controls

This bench-mounting mechanical load frame is ruggedly constructed to encompass the strain and loads involved with the test. The unit is compact in size and can be quickly installed on a bench top, requiring only a power point. It has been designed for simple operation, is easy to clean and requires minimum maintenance.

Standards

EN 12697-34

Further Information

****NOT AVAILABLE FOR SALE IN THE USA****

Load frame, 50 kN capacity. Supplied without Breaking Head. For 220 - 240 V AC, 50 Hz, 1 ph.



Breaking Head (Marshall)

Code: [45-6850](#)

Product Group: [Accessories for the Marshall test](#)

Complete with gauge disc. Supplied without flow meter.

Standards

EN 12697-34



Flow Meter BS/EN

Code: [45-6880](#)

Product Group: [Accessories for the Marshall test](#)

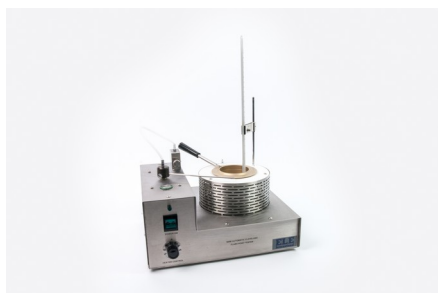
Dial gauge graduated 0.01 mm with 25 mm travel.
Supplied with stem brake unit and flow meter pedestal.

Standards

EN 12697-34

Further Information

****NOT AVAILABLE FOR SALE IN THE USA****



Cleveland Flash Cup Apparatus

Code: [46-3310/01](#)

Product Group: [Cleveland Flash Cup Apparatus](#)

The ELE Semi-Automatic Cleveland Open Cup flashpoint Tester is equipped with an electrically heated cup (with a variable control to set temperature rise rate), a button operated and electrically driven sweep arm and a test flame for use on natural gas. Bench mounted, the unit is incorporated in an easy to clean stainless steel case.

Standards

BS 2000-36, EN ISO 2592, ASTM D92, IP 36

Further Information

****NOT AVAILABLE FOR SALE IN THE USA****

For 220 - 240 V AC, 50 - 60 Hz, 1 ph.

Specification

Temperature Range	Ambient to 400°C
Power	500 W maximum
Ramp rate	Variable, manually controlled
Voltage	220/240 V, 50/60 Hz
Size (HxWxD)	33 x 31 x 29 cm
Weight	6.5 kg



Digital Asphalt Thermometer

Code: [47-0202](#)

Product Group: [Digital Asphalt Thermometer](#)

Comprises a hand-held digital thermometer with an operating range of -99 to +1372 °C with a switchable resolution between 0.1 and 1.0 °C. Operates on a 9V battery and utilises K-type thermocouple sensors.

Standards

BS 2000-49, EN 1426, EN 13179-2, ASTM D5, AASHTO T49, IP 49

Further Information

****NOT AVAILABLE FOR SALE IN THE USA****

Specification

Range	-50 to 1000°C
Resolution	Switchable 0.1 or 1.0°C
Weight	300 g



250 Asphalt Probe

Code: [47-0202/10](#)

Product Group: [Digital Asphalt Thermometer](#)

Has a heavy-duty and reinforced needle probe. It is built with a t-shaped polyethylene handle and has a maximum tip temperature of 250°C and a 300 mm long probe.

Standards

BS 2000-49, EN 1426, EN 13179-2, ASTM D5, AASHTO T49, IP 49

Further Information

****NOT AVAILABLE FOR SALE IN THE USA****

Specification

Max Reading	250°C
Length of probe	300 mm
Tip diameter (needle point)	6 mm



Clamped Boss Load Ring - 28.0 kN

Code: 78-0760

Product Group: Clamped Boss Load Rings, Digital Tritest 50 Load Frame, Load Measurement, Proving Rings, CBR-Test 50 Machine, Conversion of In-situ to Laboratory CBR, Load Measurement, CBR Loading Press, Hand-Operated, Force measurement

Standards

BS 1377, BS 1924

Specification

Capacity: kN, kgf, lbf	28.0, 2800, 6000
Typical Design sensitivity: N/div, kgf/div, lbf/div	25.5, 2.54, 5.45
Overall height mm	248
Approx weight kg	5.4
Capacity	28 kN
Value of CBR	Average range of CBR
Capacity - lbf	6,000
Capacity - kN	28
Capacity - kgf	2,800
Typical Design Sensitivity - lbf/div	5.45
Typical Design Sensitivity - N/div	25.5
Typical Design Sensitivity - Kgf/div	2.54
Overall Height	9.76" (248 mm)
Approx Weight	11 .9 lbs.(5.4 kg)



50kN Clamped Boss Load Ring

Code: 78-0860

Product Group: Clamped Boss Load Rings, Digital Tritest 50 Load Frame, Load Measurement, Proving Rings, Accessories for the Marshall test, Accessories for the Marshall Test, CBR-Test 50 Machine, Load Measurement, CBR Loading Press, Hand-Operated, Force measurement

Calibrated in compression.

Standards

EN 12697-34

Specification

Capacity - kN	50
Capacity - kgf	5000
Capacity - lbf	11,200
Typical Design Sensitivity - kN/div	45.5
Typical Design Sensitivity - Kgf/div	4.54
Typical Design Sensitivity - lbf/div	10.18
Overall Height	9.76" (248 mm)
Approx Weight	6.35 kg



225 Litre Drying Oven

Code: 78-1250/01

Product Group: Percentage Refusal Density (PRD),
Oven Drying Method, Oven Drying Method, Oven
Drying Method

Standards

EN 12697-32, EN 13280-4, BS 598-104, BS 1377

Specification

Capacity	225 litres
External Dimensions (l x w x h)	540 x 1040 x 940
Internal Dimensions (l x w x h)	440 x 920 x 600
Fluctuation	± 0.75°C
Rated power heater elements	2000 W
Shelves supplied	3
Shelf positions	4
Weight	80 kg



Hotplate

Code: 78-2950/01

Product Group: Hotplate

Further Information

Not available for sale in the USA

Specification

Construction	Cast-iron top and base ventilated sheet-steel body
Nominal diameter	200 mm
Maximum temperature	500°C
Rated power	2000 W
Weight	5 kg



Electronic Balance - 620 g x 0.001 g

Code: 78-5405/01

Product Group: Electronic Balances

Further Information

****Not available for sale in the USA****

Specification

Capacity resolution	620 g x 0.001 g
Pan size	6.3" Ø / 160mm Ø
Power Supply	18 VDC 830 mA adapter
Dimensions (w x d x h)	220 x 310 x 270 mm
Weight	3.1 kg
Weighing units	g, mg, ct, GN, N, lb, oz, ozt, dwt, custom unit
Readability	0.001 g



Electronic Balance - 4600 g x 0.01 g

Code: [78-5456/01](#)

Product Group: [Electronic Balances](#)

Further Information

****Not available for sale in the USA****

Specification

Capacity resolution	4500 g x 0.01 g
Pan size	160 x 160 mm
Mains and battery	No
Dimensions (w x d x h)	220 x 310 x 90 mm
Weight	6 kg
Weighing units	g, kg, lb, lb:oz, oz, ozt, T, custom unit.
Repeatability	0.02 g
Power supply	100-240V, 50/60Hz, 1pH



Electronic Balance - 22000 g x 0.1 g

Code: [78-5485/01](#)

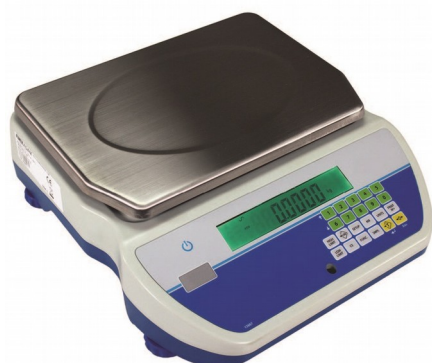
Product Group: [Electronic Balances](#)

Further Information

****Not available for sale in the USA****

Specification

Capacity resolution	22000 g x 0.1 g
Pan size	400 x 300 mm
Mains and battery	Yes
Dimensions (w x d x h)	450 x 515 x 195 mm
Weight	7.6 kg
Weighing units	g, kg, ct, GN, N, lb, oz, lb:oz.



Electronic Balance - 32 000 g x 1.0 g

Code: 78-5527/01

Product Group: [Electronic Balances](#)

- Backlit display changes colour for quick notification of checkweighing limits
- Colour-coded keys facilitate quick recognition of the most frequently used buttons
- Large, grade 304 stainless steel pan allows easy cleaning
- RS-232 interface is available to provide speedy connection to computers and printers
- Optional USB interface simplifies data communication
- Sealed keypad protects against dirt and spills
- Solid ABS housing is durable for industrial use
- Adjustable levelling feet help optimise setup
- Drip channels help divert spills away from the scales internal components
- Checkweighing with audible alarm
- External calibration allows for verification and adjustment with weights
- Internal counting resolution 1:600,000 for precise results
- Parts counting optimisation automatically refines piece weight as parts are added
- Parts counting with freely selectable sample sizes
- Preset tare function speeds the process of repetitive weighing
- Product look up (PLU) memory locations store a range of items for recall
- Programmable auto power-off to save energy
- Rechargeable battery included for operation almost anywhere

Applications: weighing, parts counting, checkweighing, check counting, accumulation of weight, percentage weighing and net total weighing.

Further Information

Not available for sale in the USA

Specification

Capacity resolution	32000 g x 1.0 g
Pan size	210 x 300 mm
Mains and battery	Yes
Dimensions (w x d x h)	326 x 355 x 115 mm
Net weight	3.29 kg

Product Sheet

www.ele.com
+44 (0) 01525 249 200



Weighing units

g, kg, lb, lb:oz, oz

Repeatability

1.0 g

Power supply

12VDC 50/60 Hz 800mA
adapter/ Internal rechargeable
battery



200 mm Diameter Lid

Code: 79-0010

Product Group: Sieve Lids and Receivers ISO and BS, 200mm Diameter BS Sieves, 200mm Diameter BS Sieves, 200mm Diameter BS Sieves

Standards

BS 410-1, ISO 3310

Further Information

****NOT AVAILABLE FOR SALE IN THE USA****



200 mm Diameter Receiver

Code: 79-0020

Product Group: Sieve Lids and Receivers ISO and BS, 200mm Diameter BS Sieves, 200mm Diameter BS Sieves, 200mm Diameter BS Sieves

Standards

BS 410-1, ISO 3310

Further Information

NOT AVAILABLE FOR SALE IN THE USA



200mm Dia BS Sieve 63 Mic Stainless Steel Mesh.

Code: [79-0070](#)

Product Group: [200mm Diameter BS Sieves](#), [200mm Diameter BS Sieves](#), [200mm Diameter BS Sieves](#)

Standards

BS 410-1, ISO 3310, ISO 565, EN933-2

Further Information

****NOT AVAILABLE FOR SALE IN THE USA****



200mm Dia BS Sieve 75 Mic Stainless Steel Mesh.

Code: 79-0080

Product Group: 200mm Diameter BS Sieves, 200mm Diameter BS Sieves, 200mm Diameter BS Sieves

Standards

BS 410-1, ISO 3310, ISO 565, EN933-2

Further Information

****NOT AVAILABLE FOR SALE IN THE USA****



200mm Dia BS Sieve 150 Mic Stainless Steel Mesh.

Code: [79-0120](#)

Product Group: [200mm Diameter BS Sieves](#), [200mm Diameter BS Sieves](#), [200mm Diameter BS Sieves](#)

Standards

BS 410-1, ISO 3310, ISO 565, EN933-2

Further Information

****NOT AVAILABLE FOR SALE IN THE USA****



200mm Dia BS Sieve 212Mic Stainless Steel Mesh.

Code: 79-0140

Product Group: 200mm Diameter BS Sieves, 200mm Diameter BS Sieves, 200mm Diameter BS Sieves

Standards

BS 410-1, ISO 3310, ISO 565, EN933-2

Further Information

****NOT AVAILABLE FOR SALE IN THE USA****



200mm Dia BS Sieve 300Mic Stainless Steel Mesh.

Code: 79-0160

Product Group: 200mm Diameter BS Sieves, 200mm Diameter BS Sieves, 200mm Diameter BS Sieves

Standards

BS 410-1, ISO 3310, EN933-2, ISO 565

Further Information

NOT AVAILABLE FOR SALE IN THE USA



200mm Dia BS Sieve 425Mic Stainless Steel Mesh.

Code: 79-0180

Product Group: 200mm Diameter BS Sieves, 200mm Diameter BS Sieves, 200mm Diameter BS Sieves

Standards

BS 410-1, ISO 3310, EN933-2, ISO 565

Further Information

NOT AVAILABLE FOR SALE IN THE USA



200mm Dia BS Sieve 600Mic Stainless Steel Mesh.

Code: 79-0200

Product Group: 200mm Diameter BS Sieves, 200mm Diameter BS Sieves, 200mm Diameter BS Sieves

Standards

BS 410-1, ISO 3310, EN933-2

Further Information

****NOT AVAILABLE FOR SALE IN THE USA****



200mm Dia BS Sieve 850Mic Stainless Steel Mesh.

Code: 79-0220

Product Group: 200mm Diameter BS Sieves, 200mm Diameter BS Sieves, 200mm Diameter BS Sieves

Standards

BS 410-1, ISO 3310, EN933-2, ISO 565

Further Information

****NOT AVAILABLE FOR SALE IN THE USA****



200mm Dia BS Sieve 1.18mm Stainless Steel Mesh.

Code: 79-0240

Product Group: 200mm Diameter BS Sieves, 200mm Diameter BS Sieves, 200mm Diameter BS Sieves

Standards

BS 410-1, ISO 3310, EN933-2, ISO 565

Further Information

****NOT AVAILABLE FOR SALE IN THE USA****



200mm Dia BS Sieve 1.70mm Stainless Steel Mesh.

Code: 79-0260

Product Group: 200mm Diameter BS Sieves, 200mm Diameter BS Sieves, 200mm Diameter BS Sieves

Standards

BS 410-1, ISO 3310, EN933-2, ISO 565

Further Information

****NOT AVAILABLE FOR SALE IN THE USA****



200mm Dia BS Sieve 2.00mm Stainless Steel Mesh.

Code: [79-0270](#)

Product Group: [200mm Diameter BS Sieves](#), [200mm Diameter BS Sieves](#), [200mm Diameter BS Sieves](#)

Standards

BS 410-1, ISO 3310, EN933-2, ISO 565

Further Information

****NOT AVAILABLE FOR SALE IN THE USA****



200mm Dia BS Sieve 2.36mm Stainless Steel Mesh.

Code: [79-0280](#)

Product Group: [200mm Diameter BS Sieves](#), [200mm Diameter BS Sieves](#), [200mm Diameter BS Sieves](#)

Standards

BS 410-1, ISO 3310, EN933-2, ISO 565

Further Information

****NOT AVAILABLE FOR SALE IN THE USA****



200mm Dia BS Sieve 3.35mm Stainless Steel Mesh.

Code: 79-0300

Product Group: 200mm Diameter BS Sieves, 200mm Diameter BS Sieves, 200mm Diameter BS Sieves

Standards

BS 410-1, ISO 3310, EN933-2, ISO 565

Further Information

****NOT AVAILABLE FOR SALE IN THE USA****



300mm Dia Lid.

Code: 79-2010

Product Group: Sieve Lids and Receivers ISO and BS, 300mm Diameter BS Sieves, 300mm Diameter BS Sieves, 300mm Diameter BS Sieves

Standards

BS 410-1, ISO 3310

Further Information

NOT AVAILABLE FOR SALE IN THE USA



300mm Dia Receiver.

Code: 79-2020

Product Group: Sieve Lids and Receivers ISO and BS, 300mm Diameter BS Sieves, 300mm Diameter BS Sieves, 300mm Diameter BS Sieves

Standards

BS 410-1, ISO 3310

Further Information

****NOT AVAILABLE FOR SALE IN THE USA****



300mm Dia BS Sieve 5.00mm Perforated Plate.

Code: 79-2515

Product Group: 300mm Diameter BS Sieves, 300mm Diameter BS Sieves, 300mm Diameter BS Sieves

Standards

BS 410-1, ISO 3310, ISO 565, EN933-2

Further Information

NOT AVAILABLE FOR SALE IN THE USA



300mm Dia BS Sieve 6.30mm Perforated Plate.

Code: 79-2525

Product Group: 300mm Diameter BS Sieves, 300mm Diameter BS Sieves, 300mm Diameter BS Sieves

Standards

BS 410-1, ISO 3310, ISO 565, EN933-2

Further Information

NOT AVAILABLE FOR SALE IN THE USA



300mm Dia BS Sieve 10.0mm Perforated Plate.

Code: 79-2555

Product Group: 300mm Diameter BS Sieves, 300mm Diameter BS Sieves, 300mm Diameter BS Sieves

Standards

BS 410-1, ISO 3310, ISO 565, EN933-2

Further Information

NOT AVAILABLE FOR SALE IN THE USA



300mm Dia BS Sieve 14.0mm Perforated Plate.

Code: 79-2575

Product Group: 300mm Diameter BS Sieves, 300mm Diameter BS Sieves, 300mm Diameter BS Sieves

Standards

BS 410-1, ISO 3310, ISO 565, EN933-2

Further Information

****NOT AVAILABLE FOR SALE IN THE USA****



300mm Dia BS Sieve 20.0mm Perforated Plate.

Code: 79-2595

Product Group: 300mm Diameter BS Sieves, 300mm Diameter BS Sieves, 300mm Diameter BS Sieves

Standards

BS 410-1, ISO 3310, ISO 565, EN933-2

Further Information

****NOT AVAILABLE FOR SALE IN THE USA****



300mm Dia BS Sieve 28.0mm Perforated Plate.

Code: 79-2615

Product Group: 300mm Diameter BS Sieves, 300mm Diameter BS Sieves, 300mm Diameter BS Sieves

Standards

BS 410-1, ISO 3310, ISO 565, EN933-2

Further Information

****NOT AVAILABLE FOR SALE IN THE USA****



300mm Dia BS Sieve 37.5mm Perforated Plate.

Code: 79-2640

Product Group: 300mm Diameter BS Sieves, 300mm Diameter BS Sieves, 300mm Diameter BS Sieves

Standards

BS 410-1, ISO 3310, ISO 565, EN933-2

Further Information

****NOT AVAILABLE FOR SALE IN THE USA****



300mm Dia BS Sieve 50.0mm Perforated Plate.

Code: 79-2655

Product Group: 300mm Diameter BS Sieves, 300mm Diameter BS Sieves, 300mm Diameter BS Sieves

Standards

BS 410-1, ISO 3310, ISO 565, EN933-2

Further Information

****NOT AVAILABLE FOR SALE IN THE USA****



300mm Dia BS Sieve 63.0mm Perforated Plate.

Code: 79-2670

Product Group: 300mm Diameter BS Sieves, 300mm Diameter BS Sieves, 300mm Diameter BS Sieves

Standards

BS 410-1, ISO 3310, ISO 565, EN933-2

Further Information

NOT AVAILABLE FOR SALE IN THE USA



300mm Dia BS Sieve 75.0mm Perforated Plate.

Code: 79-2680

Product Group: 300mm Diameter BS Sieves, 300mm Diameter BS Sieves, 300mm Diameter BS Sieves

Standards

BS 410-1, ISO 3310, ISO 565, EN933-2

Further Information

****NOT AVAILABLE FOR SALE IN THE USA****



Sieve Brush Brass and Nylon

Code: [79-7200](#)

Product Group: [Sieve Brushes](#)

Double-ended, brass and nylon bristle

Standards

ASTM E11

Further Information

****NOT AVAILABLE FOR SALE IN THE USA****



Sieve Brush Nylon

Code: [79-7210](#)

Product Group: [Sieve Brushes](#)

Nylon, double-ended

Standards

ASTM E11

Further Information

****NOT AVAILABLE FOR SALE IN THE USA****



ELE Sieve Shaker

Code: 80-0200/01

Product Group: ELE Sieve Shaker

The ELE sieve shaker is powered by an electromagnetic drive that has no rotating parts to wear making it maintenance free and extremely quiet in operation.

The unit features a triple Vertical-Lateral-Rotary vibrating action that moves the sample over the sieve producing faster more efficient sieving, while the rapid vertical movements also help keep the apertures from blinding.

The shaker is ideal for laboratory or on site use. It is robust, compact and sufficiently lightweight to be portable. The separate digital microprocessor controlled console unit incorporates a keypad for setting the sieving program and is isolated from any effects of vibration from the shaker.

As standard the shaker includes, timer 0-999 minutes, adjustable vibration intensity and adjustable intermittent or continuous operation.

Further Information

****NOT AVAILABLE FOR SALE IN THE USA****

The unit accepts up to ten 200 mm or 8 inch, full height, diameter sieves and lid and receiver, or up to six 300 mm or 12 inch diameter sieves and lid and receiver. Complete as specified. Dimensions (l x w x h) 380 x 440 x 1085 mm. For 220 - 240 V AC, 50 Hz 1ph.



Spatula 100 mm

Code: [81-0100](#)

Product Group: [Spatulas](#)

Further Information

****NOT AVAILABLE FOR SALE IN THE USA****



Spatula 200 mm

Code: [81-0140](#)

Product Group: [Determination of Plastic Limit, Spatulas](#)

Further Information

****NOT AVAILABLE FOR SALE IN THE USA****



Aluminium Scoop Small

Code: [81-0200](#)

Product Group: [Scoops and Shovels](#)

82 x 127 x 50 mm, cast aluminium with handle

Further Information

****NOT AVAILABLE FOR SALE IN THE USA****



Aluminium Scoop Large

Code: [81-0220](#)

Product Group: [Slump Test, Scoops and Shovels](#)

Further Information

****Not available for sale in the USA****



Scoop - 250 mm long

Code: [81-0222](#)

Product Group: [Scoops and Shovels](#)

Further Information

****NOT AVAILABLE FOR SALE IN THE USA****



Trowel - Gardeners type

Code: [81-0310](#)

Product Group: [Trowels and Floats](#)

Further Information

****NOT AVAILABLE FOR SALE IN THE USA****



Float - Plasterer's type

Code: [81-0340](#)

Product Group: [Trowels and Floats](#)

Further Information

****NOT AVAILABLE FOR SALE IN THE USA****



Heat-Resistant Gloves, With Gauntlet

Code: [81-0508](#)

Product Group: [Miscellaneous Laboratory Hardware](#)

Further Information

****NOT AVAILABLE FOR SALE IN THE USA****



Timer Clock

Code: [81-0518](#)

Product Group: [Rice Test Vibrator](#), [Watches and Clocks](#)

Accessory

Standards

EN 12697-5

Further Information

****NOT AVAILABLE FOR SALE IN THE USA****



Vernier Caliper Range 0 to 200mm X 0.02mm.

Code: [81-0588](#)

Product Group: [Determination of the Shape Index, Linear Shrinkage, Miscellaneous Laboratory Hardware](#)

Vernier callipers 200 x 0.002mm. Graduated in mm and inches.

Gives four types of readings: inside, outside, depth and step. Dual reading scale (metric and inch) with 14° bevelled vernier scale for reduced parallax reading error and knurled locking nut. Manufactured from hardened stainless steel for rigidity. Satin finish.

Conforms to DIN 862.

Standards

EN 933-4, BS 1377



Capping Ladle

Code: [81-0701](#)

Product Group: [Capping Compound Warming Pots](#)

Stainless steel.



Wire Brush

Code: [81-0705](#)

Product Group: [Accessories for Concrete Moulds](#),
[Miscellaneous Laboratory Hardware](#)

Further Information

****Not available for sale in the USA****



Trimming Knife

Code: [81-0710](#)

Product Group: [Soil Lathes](#), [Miscellaneous Laboratory Hardware](#), [Soil Trimmers \(Lathes\)](#)

Further Information

****NOT AVAILABLE FOR SALE IN THE USA****



Moisture Content Tin

Code: [81-2979](#)

Product Group: [Moisture Content Tin and Sample Containers](#)

Further Information

****NOT AVAILABLE FOR SALE IN THE USA****



Sample Container - Tinned Steel 2.5 litres

Code: [81-3040](#)

Product Group: [Moisture Content Tin and Sample Containers](#)

Further Information

****NOT AVAILABLE FOR SALE IN THE USA****



Sample Container - Plastic 10 litres

Code: [81-3540](#)

Product Group: [Moisture Content Tin and Sample Containers](#)

Further Information

****NOT AVAILABLE FOR SALE IN THE USA****



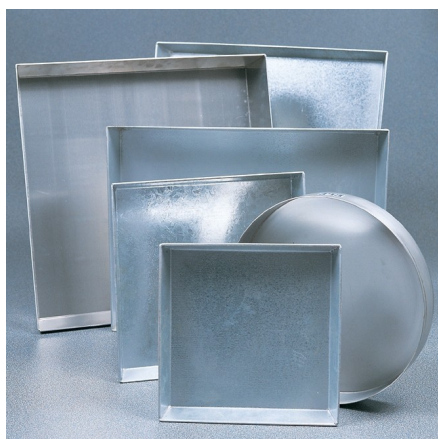
Transport/Storage Container

Code: [81-3545](#)

Product Group: [Moisture Content Tin and Sample Containers](#)

Further Information

****NOT AVAILABLE FOR SALE IN THE USA****



Sample Tray - 306 x 306 x 38 mm

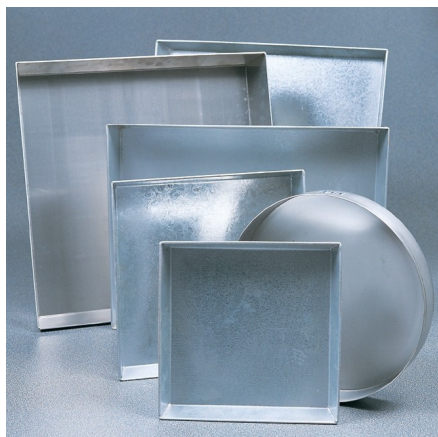
Code: [81-4020](#)

Product Group: [Sample Trays](#)

Complies to ASTM C128, AASHTO T84

Further Information

****NOT AVAILABLE FOR SALE IN THE USA****



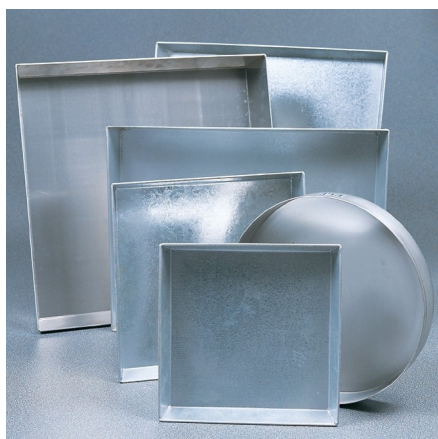
Sample Tray - 406 x 406 x 50 mm

Code: [81-4030](#)

Product Group: [Sample Trays](#)

Further Information

****NOT AVAILABLE FOR SALE IN THE USA****



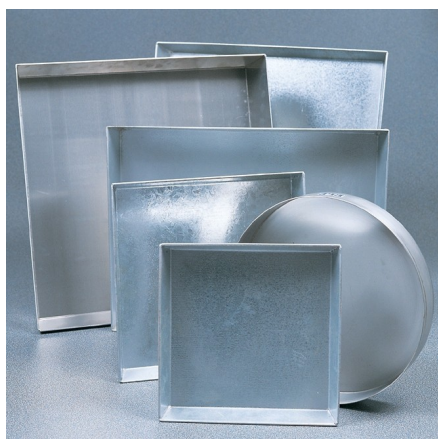
Sample Tray - 610 x 610 x 63 mm

Code: [81-4080](#)

Product Group: [Sample Trays](#)

Further Information

****NOT AVAILABLE FOR SALE IN THE USA****



Sample Tray - 1200 x 1160 x 50 mm

Code: [81-4230](#)

Product Group: [Sample Trays](#)

Further Information

****NOT AVAILABLE FOR SALE IN THE USA****



Measuring Cylinder - Glass 250 ml

Code: [82-0420](#)

Product Group: [Measuring Cylinders, BS](#)

Soda glass, spouted, BS EN 4788.

Further Information

****NOT AVAILABLE FOR SALE IN THE USA****



Measuring Cylinder - Glass 500 ml

Code: [82-0460](#)

Product Group: [Measuring Cylinders, BS](#)

Soda glass, spouted, BS EN 4788.

Further Information

****NOT AVAILABLE FOR SALE IN THE USA****



Volumetric Flask - 1000 ml

Code: [82-1060](#)

Product Group: [Funnels and Flasks](#)

Soda glass, stoppered to BS ISO 1042 Class B.

Further Information

****NOT AVAILABLE FOR SALE IN THE USA****



Bulb Pipette

Code: [82-1300](#)

Product Group: [Pipettes and Burettes](#)

BS 1583. 50 ml.

Further Information

****NOT AVAILABLE FOR SALE IN THE USA****



Evaporating Dish - 150 x 45 mm

Code: [82-2000](#)

Product Group: [Evaporating Dishes, Volumetric Shrinkage](#)

Shallow form with spout, porcelain 150 x 45 mm nominal diameter x height.

Further Information

****NOT AVAILABLE FOR SALE IN THE USA****



Buchner Funnel

Code: [82-2200](#)

Product Group: [Funnels and Flasks](#)

Size no. 5 accepts 110 mm diameter filter paper.

Further Information

****NOT AVAILABLE FOR SALE IN THE USA****



Wash Bottle

Code: [82-2500](#)

Product Group: [Bottles and Crucibles](#)

Polythene, 500 ml capacity.

Further Information

****NOT AVAILABLE FOR SALE IN THE USA****



Glass Stirring Rod

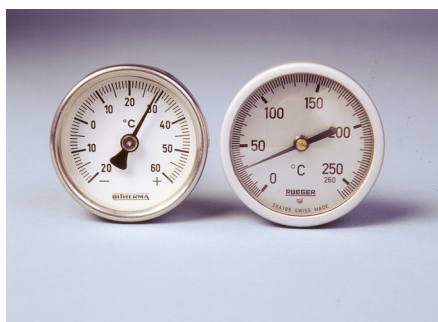
Code: [82-4005](#)

Product Group: [Syringe and Stirring Rod](#)

7 mm diameter x 200 mm long. Pack of 10.

Further Information

****NOT AVAILABLE FOR SALE IN THE USA****



Portable Thermometer 100 ml

Code: [82-5247](#)

Product Group: [Portable Dial-type Thermometers](#)

50 mm diameter dial with a 180 mm long stem.

Further Information

****NOT AVAILABLE FOR SALE IN THE USA****



Paraffin Wax

Code: [82-7031](#)

Product Group: [Chemicals, Test and Reference Materials](#)

No hazard (congealing point approx 49°C). 5 kg block.

Further Information

****NOT AVAILABLE FOR SALE IN THE USA****



Mould Oil (25 Litre Drum)

Code: [82-7341](#)

Product Group: [Accessories for Concrete Moulds,](#)
[Chemicals, Test and Reference Materials](#)

Further Information

****Not available for sale in the USA****



Water Bath - 12 litres

Code: [82-8500/01](#)

Product Group: [Water Baths](#)

Further Information

****NOT AVAILABLE FOR SALE IN THE USA****

Specification

Capacity	12 litres
Working area	210 x 300 mm
Tray	Yes
Max Water Depth	130 mm
Controller	Digital
Temperature range and stability °C	0 to 99.9 ± 0.1
Electrical supply	220 – 240 V AC, 50 - 60 Hz, 1 ph
Rated power kW	1.5
Weight	8.1 kg