



IF IT'S WORTH BUILDING, IT'S WORTH TESTING

This wishlist was generated on 14/08/2019, and contains the following Products:

23-1501

100mm Dia Soil Auger Head

23-1504

150mm Dia Soil Auger Head

23-1517

150mm Dia Gravel Auger Head.

23-1525

50mm Dia Dutch Soil Auger Head.

23-1541

Extension Rod 27mm Diameter 1m Long. for Use with Auger Heads

23-1543

Stillson Wrench Size 14.

23-1547

Handle and T Piece for Use with EL23-1541.

23-1577

38mm Diameter Sample Tube 230mm Long Complete with End Caps.

23-1579

Adaptor for 23-1577 to fit extension rods

23-1587

Jarring Link for Driving Sample Tubes.

23-1617

Spiral Auger 40mm Diameter. One Piece Model

23-3000

Riffle Box 7mm Slot Width Complete with Three Containers.

23-3070

Riffle Box 15mm Slot Width Complete with Three Containers.

23-3170

Riffle Box 30mm Slot Width Complete with Three Containers.

23-3300

Riffle Box 50mm Slot Width Complete with Three Containers.

24-0430

Glass Plate.

24-0544

Penetration Test Cone

24-0545/01

Semi-Automatic Cone Penetrometer

24-0546

Test Gauge for Checking Condition of Cone Point.

24-0548

Penetration Test Cup.

24-0811

Rod Comparator

24-1800

Shrinkage Mould to BS 1377

24-2854/01

Mechanical End-Over-End Shaker Ce

24-2900

50MI Density Bottle with Perforated Stopper.

24-4145

Sodium Hexametaphosphate 500G.

24-4620

Soil Hydrometer BS EN DD ENV graduated 0.995 to 1.030 g/ml

24-4700

Hydrometer Sedimentation Cylinder

24-4800

Nomographic Chart for The Determination of Stokes Law.

24-4865/01

Constant Temperature Bath 5 to 99.9 Deg.C X 0.1 Deg.C with Led Display and False Base Support.

25-8090

Silicon Grease Lubricant.

29-3729

Pocket Penetrometer.

29-3739

Proving Ring Penetrometer

34-0140

300 mm Stainless Steel Rule.

34-6122/01

Melting Pot 4 Litre Capacity. 50 to 300 Deg. C. Temperature Range.

78-1250/01

225 Litre Drying Oven

78-2950/01

Hotplate

78-5405/01

Electronic Balance - 620 g x 0.001 g

78-5456/01

Electronic Balance - 4600 g x 0.01 g

79-0010

200 mm Diameter Lid

79-0020

200 mm Diameter Receiver

79-0070

200mm Dia BS Sieve 63 Mic Stainless Steel Mesh.

79-0080

200mm Dia BS Sieve 75 Mic Stainless Steel Mesh.

79-0120

200mm Dia BS Sieve 150 Mic Stainless Steel Mesh.

79-0140

200mm Dia BS Sieve 212Mic Stainless Steel Mesh.

79-0160

200mm Dia BS Sieve 300Mic Stainless Steel Mesh.

79-0180

200mm Dia BS Sieve 425Mic Stainless Steel Mesh.

79-0200

200mm Dia BS Sieve 600Mic Stainless Steel Mesh.

79-0240

200mm Dia BS Sieve 1.18mm Stainless Steel Mesh.

79-0270

200mm Dia BS Sieve 2.00mm Stainless Steel Mesh.

79-0280

200mm Dia BS Sieve 2.36mm Stainless Steel Mesh.

79-0300

200mm Dia BS Sieve 3.35mm Stainless Steel Mesh.

79-2010

300mm Dia Lid.

79-2020

300mm Dia Receiver.

79-2515

300mm Dia BS Sieve 5.00mm Perforated Plate.

79-2525

300mm Dia BS Sieve 6.30mm Perforated Plate.

79-2555

300mm Dia BS Sieve 10.0mm Perforated Plate.

79-2575

300mm Dia BS Sieve 14.0mm Perforated Plate.

79-2595

300mm Dia BS Sieve 20.0mm Perforated Plate.

79-2615

300mm Dia BS Sieve 28.0mm Perforated Plate.

79-2640

300mm Dia BS Sieve 37.5mm Perforated Plate.

79-2655

300mm Dia BS Sieve 50.0mm Perforated Plate.

79-2670

300mm Dia BS Sieve 63.0mm Perforated Plate.

79-2680

300mm Dia BS Sieve 75.0mm Perforated Plate.

79-7200

Sieve Brush Brass and Nylon

79-7210

Sieve Brush Nylon

80-0200/01

ELE Sieve Shaker

81-0100

Spatula 100 mm

81-0140

Spatula 200 mm

81-0200

Aluminium Scoop Small

81-0220

Aluminium Scoop Large

81-0310

Trowel - Gardeners type

81-0518

Timer Clock

Contents

www.ele.com
+44 (0) 01525 249 200



81-0588

Vernier Caliper Range 0 to 200mm X 0.02mm.

81-0701

Capping Ladle

81-0710

Trimming Knife

81-2979

Moisture Content Tin

81-3545

Transport/Storage Container

81-4020

Sample Tray - 306 x 306 x 38 mm

81-4030

Sample Tray - 406 x 406 x 50 mm

81-4080

Sample Tray - 610 x 610 x 63 mm

82-1300

Bulb Pipette

82-2000

Evaporating Dish - 150 x 45 mm

82-2200

Buchner Funnel

82-2500

Wash Bottle

82-4005

Glass Stirring Rod

82-7031

Paraffin Wax

82-8500/01

Water Bath - 12 litres



100mm Dia Soil Auger Head

Code: [23-1501](#)

Product Group: [Soil and Gravel Auger Heads](#)

Constructed of heavy-duty steel plates; partly interlocked at the cutting end and suitable for cohesive soils.



150mm Dia Soil Auger Head

Code: [23-1504](#)

Product Group: [Soil and Gravel Auger Heads](#)

Constructed of heavy-duty steel plates; partly interlocked at the cutting end and suitable for cohesive soils.



150mm Dia Gravel Auger Head.

Code: [23-1517](#)

Product Group: [Soil and Gravel Auger Heads](#)

Comprises one piece steel casting with a spiral point and two plates designed to close when lifting samples from the borehole; suitable for gravel and sand.



50mm Dia Dutch Soil Auger Head.

Code: [23-1525](#)

Product Group: [Soil and Gravel Auger Heads](#)

Constructed of heavy-duty steel plates; partly interlocked at the cutting end and suitable for fine, silty sand.



Extension Rod 27mm Diameter 1m Long. for Use with Auger Heads

Code: [23-1541](#)

Product Group: [Extension Rods, Handles and Tools](#)

With tube connector, constructed of steel tubing
approximately 1 metre long.



Stillson Wrench Size 14.

Code: [23-1543](#)

Product Group: [Extension Rods, Handles and Tools](#)

Size 14, for use with 23-1541. Two required.



Handle and T Piece for Use with EL23-1541.

Code: [23-1547](#)

Product Group: [Extension Rods, Handles and Tools](#)



38mm Diameter Sample Tube 230mm Long Complete with End Caps.

Code: [23-1577](#)

Product Group: [Extension Rods, Handles and Tools](#)

Supplied without Adaptor, but with two end caps



Adaptor for 23-1577 to fit extension rods

Code: [23-1579](#)

Product Group: [N/A](#)

Adaptor to fit 38mm diameter sample tubes to extension rods.



Jarring Link for Driving Sample Tubes.

Code: [23-1587](#)

Product Group: [Extension Rods, Handles and Tools](#)

For driving sample tubes



Spiral Auger 40mm Diameter. One Piece Model

Code: [23-1617](#)

Product Group: [Soil and Gravel Auger Heads](#)

40 mm diameter x 200 mm long with rod and T-piece attached. Overall nominal length 1250 mm.



Riffle Box 7mm Slot Width Complete with Three Containers.

Code: 23-3000

Product Group: Riffle Boxes (Sample Dividers)

Manufactured from heavy-gauge sheet metal. BS recommended maximum particle size of 4.5 mm. EN recommended maximum particle size of 3.5 mm. Includes 12 slots each with a 7 mm slot width and an overall approximate capacity of 0.3 litres.

Standards

BS 1377, BS 1924, BS 812, EN 932-1

Specification

Recommended max particle size BS	4.5
Recommended max particle size EN	3.5
Slot width mm	7
No. of slots	12
Approx. capacity kg	0.3
Weight kg	1.5



Riffle Box 15mm Slot Width Complete with Three Containers.

Code: [23-3070](#)

Product Group: [Riffle Boxes \(Sample Dividers\)](#)

Manufactured from heavy-gauge sheet metal. BS recommended maximum particle size of 10 mm. EN recommended maximum particle size of 7.5 mm. Includes 12 slots each with a 15 mm slot width and an overall approximate capacity of 2 litres.

Standards

BS 1377, BS 1924, BS 812, EN 932-1

Specification

Recommended max particle size BS	10
Recommended max particle size EN	7.5
Slot width mm	15
No. of slots	12
Approx. capacity kg	2
Weight kg	8



Riffle Box 30mm Slot Width Complete with Three Containers.

Code: [23-3170](#)

Product Group: [Riffle Boxes \(Sample Dividers\)](#)

Manufactured from heavy-gauge sheet metal. BS recommended maximum particle size of 20 mm. EN recommended maximum particle size of 15 mm. Includes 10 slots each with a 30 mm slot width and an overall approximate capacity of 4 litres.

Standards

BS 1377, BS 1924, BS 812, EN 932-1

Specification

Recommended max particle size BS	20
Recommended max particle size EN	15
Slot width mm	30
No. of slots	10
Approx. capacity kg	4
Weight kg	17.5



Riffle Box 50mm Slot Width Complete with Three Containers.

Code: 23-3300

Product Group: [Riffle Boxes \(Sample Dividers\)](#)

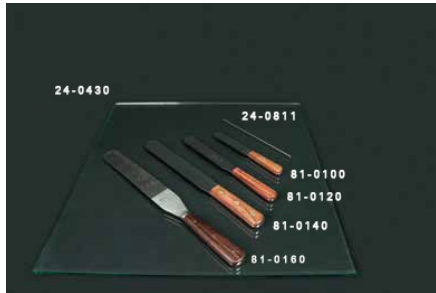
Manufactured from heavy-gauge sheet metal. BS recommended maximum particle size of 33 mm. EN recommended maximum particle size of 25 mm. Includes 8 slots each with a 50 mm slot width and an overall approximate capacity of 14 litres.

Standards

BS 1377, BS 1924, BS 812, EN 932-1

Specification

Recommended max particle size BS	33
Recommended max particle size EN	25
Slot width mm	50
No. of slots	8
Approx. capacity kg	14
Weight kg	22.5



Glass Plate.

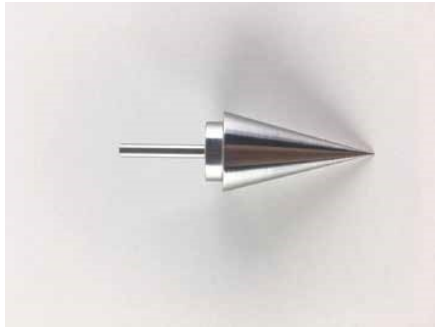
Code: [24-0430](#)

Product Group: [Casagrande Method, Determination of Plastic Limit](#)

500 mm square x 10 mm thick.

Standards

BS 1377-2



Penetration Test Cone

Code: [24-0544](#)

Product Group: [Cone Penetrometer Method](#), [Cone Penetrometer](#)

Stainless steel, 35 mm long with smooth surface at an angle of 30°.

Standards

BS 1377-2



Semi-Automatic Cone Penetrometer

Code: 24-0545/01

Product Group: Semi-Automatic Cone Penetrometer,
Semi-Automatic Cone Penetrometer

Bench mounted apparatus to determine the liquid limit of soils to BS1377. This method is applicable to a wide range of soils. The apparatus is fitted with a 150mm diameter dial indicator for direct reading of penetration. Supplied complete with 30 deg, 30mm long test cone. Manufactured from stainless steel and includes adjustable levelling feet.

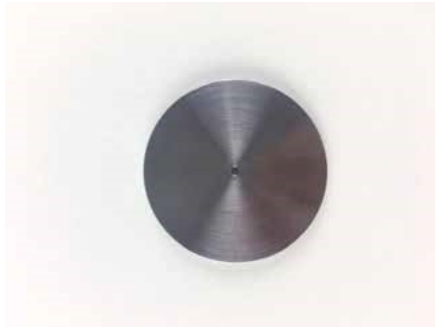
Incorporates digital automatic controller, which releases the plunger head and ensures free falling of the penetration device during the test. The time set is displayed by a bright easy to read display.

Standards

BS 1377, BS 1924-2, EN 1997-2

Specification

Dial Indicator	150 mm diameter graduated in 400 x 0.1 mm divisions. Indicator incorporates a friction/gear system.
Height	Adjustable using rapid integral clamping mechanism.
Cone Release	Semi-Automatic
Cone	1 x 30°, 35 mm test cone included.
Base	Cast aluminum with adjustable leveling feet.
Weight	Net 19 lbs. (8.64 kg).



Test Gauge for Checking Condition of Cone Point.

Code: [24-0546](#)

Product Group: [Cone Penetrometer Method, Cone Penetrometer](#)

55 mm diameter by 40 mm deep, with the rim parallel to the flat base.

Standards

BS 1377-2



Penetration Test Cup.

Code: [24-0548](#)

Product Group: [Cone Penetrometer Method, Cone Penetrometer](#)

Brass construction, 55mm dia x 40mm depth to fit BS1377

Standards

BS 1377-2



Rod Comparator

Code: [24-0811](#)

Product Group: [Determination of Plastic Limit, Rod Comparator](#)

3mm diameter rod comparator to BS1377.

Standards

BS 1924-2, EN 1997-2, ASTM D4318, BS 1377, AASHTO T90



Shrinkage Mould to BS 1377

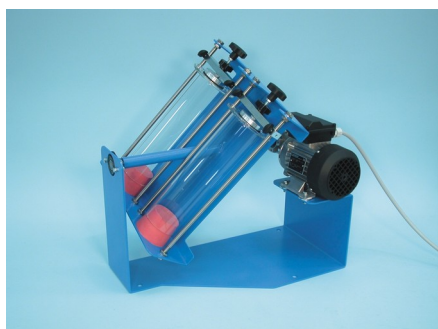
Code: [24-1800](#)

Product Group: [Linear Shrinkage](#)

To produce a specimen 140 mm long x 12.5 mm radius.

Standards

BS 1377



Mechanical End-Over-End Shaker Ce

Code: [24-2854/01](#)

Product Group: [Gas Jar Method](#)

With Friction Safety Device and Control Panel
220-240V 50/60 Hz 1Ph.

Fitted with friction safety device, capable of rotating two EL24-2830 Gas Jars at approximately 50 rpm to satisfy BS 1377.

Standards

BS 1377, EN 1997-2



50Ml Density Bottle with Perforated Stopper.

Code: [24-2900](#)

Product Group: [Particle Density: Pyknometer Methods](#)

Supplied complete with capillary vent stopper.
Conforms to BS 733, and ISO 3507. Gay-Lussac type.

Standards

ASTM C128, AASHTO T84



Sodium Hexametaphosphate 500G.

Code: [24-4145](#)

Product Group: [Sodium Hexametaphosphate,](#)
[Mechanical Analysis Stirrer](#)

Standards

ASTM D422, AASHTO T88, ASTM E100



Soil Hydrometer BS EN DD ENV graduated 0.995 to 1.030 g/ml

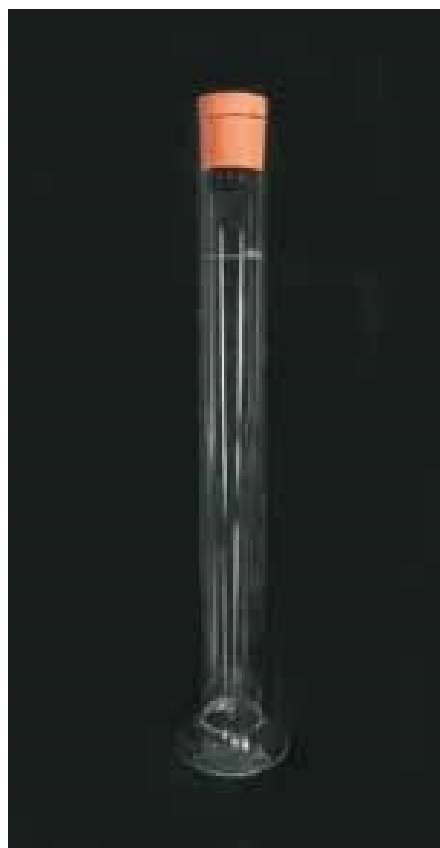
Code: [24-4620](#)

Product Group: [Soil Hydrometers](#)

Graduated 0.995 to 1.030 g/ml.

Standards

ASTM D422, BS 1377, EN 1997-2, ASTM E100, AASHTO T88



Hydrometer Sedimentation Cylinder

Code: [24-4700](#)

Product Group: [Hydrometer Sedimentation Cylinder](#),
[Hydrometer Jar](#)

Glass, 1000 ml capacity complete with rubber bung.

Standards

BS 1337, ASTM D422, AASHTO T88

Further Information

1000ML Glass



Nomographic Chart for The Determination of Stokes Law.

Code: [24-4800](#)

Product Group: [Hydrometer Sedimentation Cylinder](#)

For the determination of Stoke's Law.

Standards

ASTM D422, AASHTO T88



Constant Temperature Bath 5 to 99.9 Deg.C X 0.1 Deg.C with Led Display and False Base Support.

Code: [24-4865/01](#)

Product Group: [Constant Temperature Bath](#)

- Specially designed for Sedimentation of Testing of Soils
- Stainless steel construction with toughened glass front for viewing samples
- Must hold six sedimentation cylinders
- Complies to: BS 1377-2 EN DD ENV1997-2 ASTM D422 AASHTO T88

Further Information

Specially designed for the sedimentation testing of soils and other fine grained material, the bath is supplied with a false bottom to assist in circulation of the bath liquid. Will accommodate six Sedimentation Cylinders.

Specification

Dimensions (l x w x h)	535 x 210 x 610 mm external
Capacity	Holds up to 6 sedimentation cylinders
Construction	Stainless steel with toughened glass front
Temperature Control	Heater/thermostat/circulation with digital controller unit 5 to 99.9 Deg.C X 0.1 Deg.C
Power	1500 watts
Weight kg	12



Silicon Grease Lubricant.

Code: [25-8090](#)

Product Group: [Aggressive Materials](#)

Silicon Grease Lubricant (Tube).

Standards

BS 1377, ASTM D2850, ASTM D4767, AASHTO T296, AASHTO T297



Pocket Penetrometer.

Code: 29-3729

Product Group: [In-situ Testing](#), [Pocket Penetrometer](#), [Plate Bearing Apparatus](#)

- Direct-reading scale in tons/sq. ft. and kg/sq. cm.
- Ground and polished stainless steel loading piston.
- Calibrated spring and penetrometer body plated for rust resistance and long life.
- Convenient belt-loop style carrying case.
- Optional Adapter Foot for testing very soft materials.

The Pocket Penetrometer was originally developed for use by field personnel in checking visual classification of soils. Data was compiled on several thousand unconfined compressive strength tests of silty clays and clayey soils against the penetrometer readings to develop the scale.

Further Information

IMPORTANT: the readings obtained from the pocket penetrometer do not replace laboratory test results due to the fact that a small area penetration test is inherently liable to give misleading results. The instrument should not be used for obtaining foundation design data.

Specification

Range	0.25 to 4.5 tons/sq. ft. (kg/sq. cm).
Scale Divisions	0.25 tons/sq. ft. (kg/sq. cm).
Load Piston	1/4" (6 mm) diam.; stainless steel.
Carrying Case	Canvas; belt-loop style.
Dimensions	3/4" diam. x 6-3/8" l. (19 x 162 mm).
Weight	Net 7 oz. (198 g).



Proving Ring Penetrometer

Code: [29-3739](#)

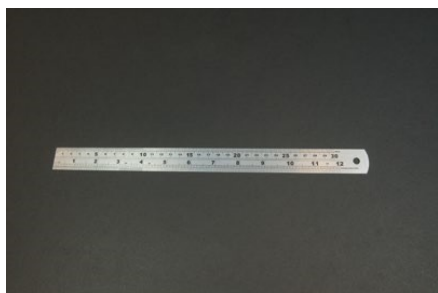
Product Group: [Proving Ring Penetrometer](#)

Further Information

250 psi capacity

Specification

Proving Ring	250 lb. (1.1 kN) capacity.
Dial Indicator	Brake type.
Shaft	3/4" (19 mm) diam. x 18" l. (457 mm); graduated at 6" (152 mm) intervals.
Extension Rod	3/4" (19 mm) diam. x 36" l. (914 mm); graduated at 6" (152 mm) intervals.
Cone	30 degree; 1 sq. in.; replaceable.
Handle	Cast aluminum.
Weight	Net 12 lbs. (5.4 kg).



300 mm Stainless Steel Rule.

Code: [34-0140](#)

Product Group: [Slump Test](#)

Standards

EN 12350-2

Further Information

****NOT AVAILABLE FOR SALE IN THE USA****



Melting Pot 4 Litre Capacity. 50 to 300 Deg. C. Temperature Range.

Code: [34-6122/01](#)

Product Group: [Melting Pot](#)

This unit is suitable for melting wax and capping compound and comprises a metal container in a welllagged steel jacket. A thermostatic control and stand-by heat switch are fitted. Supplied complete with lift-off cover.

Standards

BS 1377-1

Further Information

****NOT AVAILABLE FOR SALE IN THE USA****

for 220 - 240 V AC, 50 - 60 Hz, 1 ph.

Specification

Internal Dimensions (diameter x depth)	140 x 150 mm
External Dimensions (diameter x depth)	250 x 165 mm
Capacity	4 litres
Rated Power	300 watt
Temperature range	50 to 300°C
Weight	7 kg
Internal Dimensions (diameter x depth)	140 x 150 mm
External Dimensions (diameter x depth)	250 x 165 mm
Capacity	4 litres
Rated Power	300 watt
Temperature range	50 to 300°C
Weight	7 kg



225 Litre Drying Oven

Code: 78-1250/01

Product Group: Percentage Refusal Density (PRD),
Oven Drying Method, Oven Drying Method, Oven
Drying Method

Standards

EN 12697-32, EN 13280-4, BS 598-104, BS 1377

Specification

Capacity	225 litres
External Dimensions (l x w x h)	540 x 1040 x 940
Internal Dimensions (l x w x h)	440 x 920 x 600
Fluctuation	$\pm 0.75^{\circ}\text{C}$
Rated power heater elements	2000 W
Shelves supplied	3
Shelf positions	4
Weight	80 kg



Hotplate

Code: 78-2950/01

Product Group: Hotplate

Further Information

****Not available for sale in the USA****

Specification

Construction	Cast-iron top and base ventilated sheet-steel body
Nominal diameter	200 mm
Maximum temperature	500°C
Rated power	2000 W
Weight	5 kg



Electronic Balance - 620 g x 0.001 g

Code: 78-5405/01

Product Group: Electronic Balances

Further Information

****Not available for sale in the USA****

Specification

Capacity resolution	620 g x 0.001 g
Pan size	6.3" Ø / 160mm Ø
Power Supply	18 VDC 830 mA adapter
Dimensions (w x d x h)	220 x 310 x 270 mm
Weight	3.1 kg
Weighing units	g, mg, ct, GN, N, lb, oz, ozt, dwt, custom unit
Readability	0.001 g



Electronic Balance - 4600 g x 0.01 g

Code: [78-5456/01](#)

Product Group: [Electronic Balances](#)

Further Information

****Not available for sale in the USA****

Specification

Capacity resolution	4500 g x 0.01 g
Pan size	160 x 160 mm
Mains and battery	No
Dimensions (w x d x h)	220 x 310 x 90 mm
Weight	6 kg
Weighing units	g, kg, lb, lb:oz, oz, ozt, T, custom unit.
Repeatability	0.02 g
Power supply	100-240V, 50/60Hz, 1pH



200 mm Diameter Lid

Code: 79-0010

Product Group: Sieve Lids and Receivers ISO and BS, 200mm Diameter BS Sieves, 200mm Diameter BS Sieves, 200mm Diameter BS Sieves

Standards

BS 410-1, ISO 3310

Further Information

****NOT AVAILABLE FOR SALE IN THE USA****



200 mm Diameter Receiver

Code: 79-0020

Product Group: Sieve Lids and Receivers ISO and BS, 200mm Diameter BS Sieves, 200mm Diameter BS Sieves, 200mm Diameter BS Sieves

Standards

BS 410-1, ISO 3310

Further Information

NOT AVAILABLE FOR SALE IN THE USA



200mm Dia BS Sieve 63 Mic Stainless Steel Mesh.

Code: [79-0070](#)

Product Group: [200mm Diameter BS Sieves](#), [200mm Diameter BS Sieves](#), [200mm Diameter BS Sieves](#)

Standards

BS 410-1, ISO 3310, ISO 565, EN933-2

Further Information

****NOT AVAILABLE FOR SALE IN THE USA****



200mm Dia BS Sieve 75 Mic Stainless Steel Mesh.

Code: [79-0080](#)

Product Group: [200mm Diameter BS Sieves](#), [200mm Diameter BS Sieves](#), [200mm Diameter BS Sieves](#)

Standards

BS 410-1, ISO 3310, ISO 565, EN933-2

Further Information

****NOT AVAILABLE FOR SALE IN THE USA****



200mm Dia BS Sieve 150 Mic Stainless Steel Mesh.

Code: [79-0120](#)

Product Group: [200mm Diameter BS Sieves](#), [200mm Diameter BS Sieves](#), [200mm Diameter BS Sieves](#)

Standards

BS 410-1, ISO 3310, ISO 565, EN933-2

Further Information

****NOT AVAILABLE FOR SALE IN THE USA****



200mm Dia BS Sieve 212Mic Stainless Steel Mesh.

Code: 79-0140

Product Group: 200mm Diameter BS Sieves, 200mm Diameter BS Sieves, 200mm Diameter BS Sieves

Standards

BS 410-1, ISO 3310, ISO 565, EN933-2

Further Information

****NOT AVAILABLE FOR SALE IN THE USA****



200mm Dia BS Sieve 300Mic Stainless Steel Mesh.

Code: 79-0160

Product Group: 200mm Diameter BS Sieves, 200mm Diameter BS Sieves, 200mm Diameter BS Sieves

Standards

BS 410-1, ISO 3310, EN933-2, ISO 565

Further Information

NOT AVAILABLE FOR SALE IN THE USA



200mm Dia BS Sieve 425Mic Stainless Steel Mesh.

Code: 79-0180

Product Group: 200mm Diameter BS Sieves, 200mm Diameter BS Sieves, 200mm Diameter BS Sieves

Standards

BS 410-1, ISO 3310, EN933-2, ISO 565

Further Information

NOT AVAILABLE FOR SALE IN THE USA



200mm Dia BS Sieve 600Mic Stainless Steel Mesh.

Code: 79-0200

Product Group: 200mm Diameter BS Sieves, 200mm Diameter BS Sieves, 200mm Diameter BS Sieves

Standards

BS 410-1, ISO 3310, EN933-2

Further Information

****NOT AVAILABLE FOR SALE IN THE USA****



200mm Dia BS Sieve 1.18mm Stainless Steel Mesh.

Code: [79-0240](#)

Product Group: [200mm Diameter BS Sieves](#), [200mm Diameter BS Sieves](#), [200mm Diameter BS Sieves](#)

Standards

BS 410-1, ISO 3310, EN933-2, ISO 565

Further Information

****NOT AVAILABLE FOR SALE IN THE USA****



200mm Dia BS Sieve 2.00mm Stainless Steel Mesh.

Code: [79-0270](#)

Product Group: [200mm Diameter BS Sieves](#), [200mm Diameter BS Sieves](#), [200mm Diameter BS Sieves](#)

Standards

BS 410-1, ISO 3310, EN933-2, ISO 565

Further Information

****NOT AVAILABLE FOR SALE IN THE USA****



200mm Dia BS Sieve 2.36mm Stainless Steel Mesh.

Code: [79-0280](#)

Product Group: [200mm Diameter BS Sieves](#), [200mm Diameter BS Sieves](#), [200mm Diameter BS Sieves](#)

Standards

BS 410-1, ISO 3310, EN933-2, ISO 565

Further Information

****NOT AVAILABLE FOR SALE IN THE USA****



200mm Dia BS Sieve 3.35mm Stainless Steel Mesh.

Code: 79-0300

Product Group: 200mm Diameter BS Sieves, 200mm Diameter BS Sieves, 200mm Diameter BS Sieves

Standards

BS 410-1, ISO 3310, EN933-2, ISO 565

Further Information

****NOT AVAILABLE FOR SALE IN THE USA****



300mm Dia Lid.

Code: 79-2010

Product Group: Sieve Lids and Receivers ISO and BS, 300mm Diameter BS Sieves, 300mm Diameter BS Sieves, 300mm Diameter BS Sieves

Standards

BS 410-1, ISO 3310

Further Information

NOT AVAILABLE FOR SALE IN THE USA



300mm Dia Receiver.

Code: 79-2020

Product Group: Sieve Lids and Receivers ISO and BS, 300mm Diameter BS Sieves, 300mm Diameter BS Sieves, 300mm Diameter BS Sieves

Standards

BS 410-1, ISO 3310

Further Information

NOT AVAILABLE FOR SALE IN THE USA



300mm Dia BS Sieve 5.00mm Perforated Plate.

Code: 79-2515

Product Group: 300mm Diameter BS Sieves, 300mm Diameter BS Sieves, 300mm Diameter BS Sieves

Standards

BS 410-1, ISO 3310, ISO 565, EN933-2

Further Information

****NOT AVAILABLE FOR SALE IN THE USA****



300mm Dia BS Sieve 6.30mm Perforated Plate.

Code: 79-2525

Product Group: 300mm Diameter BS Sieves, 300mm Diameter BS Sieves, 300mm Diameter BS Sieves

Standards

BS 410-1, ISO 3310, ISO 565, EN933-2

Further Information

****NOT AVAILABLE FOR SALE IN THE USA****



300mm Dia BS Sieve 10.0mm Perforated Plate.

Code: 79-2555

Product Group: 300mm Diameter BS Sieves, 300mm Diameter BS Sieves, 300mm Diameter BS Sieves

Standards

BS 410-1, ISO 3310, ISO 565, EN933-2

Further Information

NOT AVAILABLE FOR SALE IN THE USA



300mm Dia BS Sieve 14.0mm Perforated Plate.

Code: 79-2575

Product Group: 300mm Diameter BS Sieves, 300mm Diameter BS Sieves, 300mm Diameter BS Sieves

Standards

BS 410-1, ISO 3310, ISO 565, EN933-2

Further Information

****NOT AVAILABLE FOR SALE IN THE USA****



300mm Dia BS Sieve 20.0mm Perforated Plate.

Code: 79-2595

Product Group: 300mm Diameter BS Sieves, 300mm Diameter BS Sieves, 300mm Diameter BS Sieves

Standards

BS 410-1, ISO 3310, ISO 565, EN933-2

Further Information

NOT AVAILABLE FOR SALE IN THE USA



300mm Dia BS Sieve 28.0mm Perforated Plate.

Code: 79-2615

Product Group: 300mm Diameter BS Sieves, 300mm Diameter BS Sieves, 300mm Diameter BS Sieves

Standards

BS 410-1, ISO 3310, ISO 565, EN933-2

Further Information

****NOT AVAILABLE FOR SALE IN THE USA****



300mm Dia BS Sieve 37.5mm Perforated Plate.

Code: 79-2640

Product Group: 300mm Diameter BS Sieves, 300mm Diameter BS Sieves, 300mm Diameter BS Sieves

Standards

BS 410-1, ISO 3310, ISO 565, EN933-2

Further Information

NOT AVAILABLE FOR SALE IN THE USA



300mm Dia BS Sieve 50.0mm Perforated Plate.

Code: 79-2655

Product Group: 300mm Diameter BS Sieves, 300mm Diameter BS Sieves, 300mm Diameter BS Sieves

Standards

BS 410-1, ISO 3310, ISO 565, EN933-2

Further Information

****NOT AVAILABLE FOR SALE IN THE USA****



300mm Dia BS Sieve 63.0mm Perforated Plate.

Code: 79-2670

Product Group: 300mm Diameter BS Sieves, 300mm Diameter BS Sieves, 300mm Diameter BS Sieves

Standards

BS 410-1, ISO 3310, ISO 565, EN933-2

Further Information

NOT AVAILABLE FOR SALE IN THE USA



300mm Dia BS Sieve 75.0mm Perforated Plate.

Code: 79-2680

Product Group: 300mm Diameter BS Sieves, 300mm Diameter BS Sieves, 300mm Diameter BS Sieves

Standards

BS 410-1, ISO 3310, ISO 565, EN933-2

Further Information

****NOT AVAILABLE FOR SALE IN THE USA****



Sieve Brush Brass and Nylon

Code: [79-7200](#)

Product Group: [Sieve Brushes](#)

Double-ended, brass and nylon bristle

Standards

ASTM E11

Further Information

****NOT AVAILABLE FOR SALE IN THE USA****



Sieve Brush Nylon

Code: [79-7210](#)

Product Group: [Sieve Brushes](#)

Nylon, double-ended

Standards

ASTM E11

Further Information

****NOT AVAILABLE FOR SALE IN THE USA****



ELE Sieve Shaker

Code: 80-0200/01

Product Group: ELE Sieve Shaker

The ELE sieve shaker is powered by an electromagnetic drive that has no rotating parts to wear making it maintenance free and extremely quiet in operation.

The unit features a triple Vertical-Lateral-Rotary vibrating action that moves the sample over the sieve producing faster more efficient sieving, while the rapid vertical movements also help keep the apertures from blinding.

The shaker is ideal for laboratory or on site use. It is robust, compact and sufficiently lightweight to be portable. The separate digital microprocessor controlled console unit incorporates a keypad for setting the sieving program and is isolated from any effects of vibration from the shaker.

As standard the shaker includes, timer 0-999 minutes, adjustable vibration intensity and adjustable intermittent or continuous operation.

Further Information

****NOT AVAILABLE FOR SALE IN THE USA****

The unit accepts up to ten 200 mm or 8 inch, full height, diameter sieves and lid and receiver, or up to six 300 mm or 12 inch diameter sieves and lid and receiver. Complete as specified. Dimensions (l x w x h) 380 x 440 x 1085 mm. For 220 - 240 V AC, 50 Hz 1ph.



Spatula 100 mm

Code: [81-0100](#)

Product Group: [Spatulas](#)

Further Information

****NOT AVAILABLE FOR SALE IN THE USA****



Spatula 200 mm

Code: [81-0140](#)

Product Group: [Determination of Plastic Limit, Spatulas](#)

Further Information

****NOT AVAILABLE FOR SALE IN THE USA****



Aluminium Scoop Small

Code: [81-0200](#)

Product Group: [Scoops and Shovels](#)

82 x 127 x 50 mm, cast aluminium with handle

Further Information

****NOT AVAILABLE FOR SALE IN THE USA****



Aluminium Scoop Large

Code: [81-0220](#)

Product Group: [Slump Test, Scoops and Shovels](#)

Further Information

Not available for sale in the USA



Trowel - Gardeners type

Code: [81-0310](#)

Product Group: [Trowels and Floats](#)

Further Information

****NOT AVAILABLE FOR SALE IN THE USA****



Timer Clock

Code: [81-0518](#)

Product Group: [Rice Test Vibrator](#), [Watches and Clocks](#)

Accessory

Standards

EN 12697-5

Further Information

****NOT AVAILABLE FOR SALE IN THE USA****



Vernier Caliper Range 0 to 200mm X 0.02mm.

Code: [81-0588](#)

Product Group: [Determination of the Shape Index, Linear Shrinkage, Miscellaneous Laboratory Hardware](#)

Vernier callipers 200 x 0.002mm. Graduated in mm and inches.

Gives four types of readings: inside, outside, depth and step. Dual reading scale (metric and inch) with 14° bevelled vernier scale for reduced parallax reading error and knurled locking nut. Manufactured from hardened stainless steel for rigidity. Satin finish.

Conforms to DIN 862.

Standards

EN 933-4, BS 1377



Capping Ladle

Code: [81-0701](#)

Product Group: [Capping Compound Warming Pots](#)

Stainless steel.



Trimming Knife

Code: [81-0710](#)

Product Group: [Soil Lathes](#), [Miscellaneous Laboratory Hardware](#), [Soil Trimmers \(Lathes\)](#)

Further Information

****NOT AVAILABLE FOR SALE IN THE USA****



Moisture Content Tin

Code: [81-2979](#)

Product Group: [Moisture Content Tin and Sample Containers](#)

Further Information

****NOT AVAILABLE FOR SALE IN THE USA****



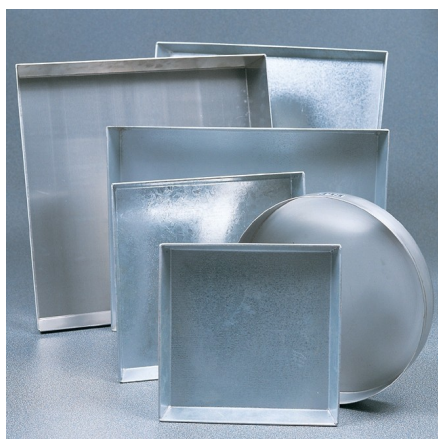
Transport/Storage Container

Code: [81-3545](#)

Product Group: [Moisture Content Tin and Sample Containers](#)

Further Information

****NOT AVAILABLE FOR SALE IN THE USA****



Sample Tray - 306 x 306 x 38 mm

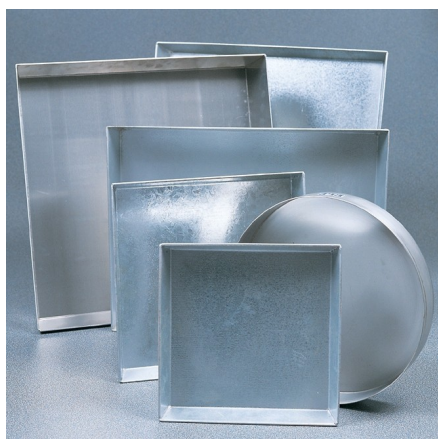
Code: [81-4020](#)

Product Group: [Sample Trays](#)

Complies to ASTM C128, AASHTO T84

Further Information

****NOT AVAILABLE FOR SALE IN THE USA****



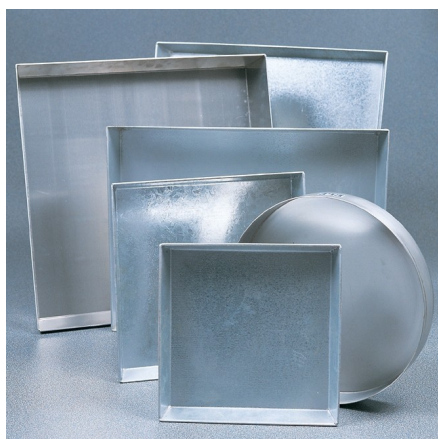
Sample Tray - 406 x 406 x 50 mm

Code: [81-4030](#)

Product Group: [Sample Trays](#)

Further Information

****NOT AVAILABLE FOR SALE IN THE USA****



Sample Tray - 610 x 610 x 63 mm

Code: [81-4080](#)

Product Group: [Sample Trays](#)

Further Information

****NOT AVAILABLE FOR SALE IN THE USA****



Bulb Pipette

Code: [82-1300](#)

Product Group: [Pipettes and Burettes](#)

BS 1583. 50 ml.

Further Information

****NOT AVAILABLE FOR SALE IN THE USA****



Evaporating Dish - 150 x 45 mm

Code: [82-2000](#)

Product Group: [Evaporating Dishes, Volumetric Shrinkage](#)

Shallow form with spout, porcelain 150 x 45 mm nominal diameter x height.

Further Information

****NOT AVAILABLE FOR SALE IN THE USA****



Buchner Funnel

Code: [82-2200](#)

Product Group: [Funnels and Flasks](#)

Size no. 5 accepts 110 mm diameter filter paper.

Further Information

****NOT AVAILABLE FOR SALE IN THE USA****



Wash Bottle

Code: [82-2500](#)

Product Group: [Bottles and Crucibles](#)

Polythene, 500 ml capacity.

Further Information

****NOT AVAILABLE FOR SALE IN THE USA****



Glass Stirring Rod

Code: [82-4005](#)

Product Group: [Syringe and Stirring Rod](#)

7 mm diameter x 200 mm long. Pack of 10.

Further Information

****NOT AVAILABLE FOR SALE IN THE USA****



Paraffin Wax

Code: [82-7031](#)

Product Group: [Chemicals, Test and Reference Materials](#)

No hazard (congealing point approx 49°C). 5 kg block.

Further Information

****NOT AVAILABLE FOR SALE IN THE USA****



Water Bath - 12 litres

Code: [82-8500/01](#)

Product Group: [Water Baths](#)

Further Information

****NOT AVAILABLE FOR SALE IN THE USA****

Specification

Capacity	12 litres
Working area	210 x 300 mm
Tray	Yes
Max Water Depth	130 mm
Controller	Digital
Temperature range and stability °C	0 to 99.9 ± 0.1
Electrical supply	220 – 240 V AC, 50 - 60 Hz, 1 ph
Rated power kW	1.5
Weight	8.1 kg