



IF IT'S WORTH BUILDING, IT'S WORTH TESTING

This wishlist was generated on 14/08/2019, and contains the following Products:

---

23-3200

**Riffle Box 38mm Slot Width Complete with Three Containers.**

---

23-3300

**Riffle Box 50mm Slot Width Complete with Three Containers.**

---

24-9000

**BS Standard Compaction Mould 1000Cm Capacity.**

---

24-9002

**Standard Compaction Rammer 2.5kg BS1377**

---

24-9004

**BS Compaction Rammer 4.5Kg Wt.**

---

24-9150/01

**Cbr-Test 50 Machine 50kN Capacity BS and ASTM Supplied with Stabilising Bar.**

---

24-9182

**Penetration Piston**

---

24-9186

**Penetration Dial Gauge BS**

---

24-9188

**Bracket and Adaptor. Dual Purpose Mounting Bracket for CBR Penetration Gauges EL24-9184/EL24-9186**

---

24-9198

**BS Cbr Mould Body.**

---

24-9200

**BS Extension Collar**

---

24-9202

**BS Perforated Base Plate.**

---

24-9204

**BS Solid Base or Top Plate**

---

24-9206

## **Cbr Cutting Collar with Area Ratio of 21.9% to Fit BS Moulds.**

---

24-9208

### **C-Spanner for BS Cbr Mould. Two Required.**

---

24-9210

### **Base Plate Tool for BS Mould**

---

24-9212

### **Static Compaction Plug.**

---

24-9214

### **2Kg Annular Surcharge Weight**

---

24-9216

### **2Kg Split Surcharge Weight.**

---

24-9220

### **Filter Papers 150mm Dia Equivalent to Whatman No 1. Box of 100.**

---

24-9237

### **Spacer Disc 5-7/8" Diameter**

---

24-9260

### **Swell Plate**

---

24-9262

### **Swell Stand**

---

24-9275

### **Dial Gauge 25mm Travel X 0.01mm Divisions.**

---

25-0446

### **50mm Stainless Steel Consolidation Cell**

---

25-0467

### **75mm Stainless Steel Consolidation Cell**

---

25-0500/09

### **AUTO Soils Consolidator**

---

27-1565

### **15 kN S Type Load Cell (lead 0.7 m)**

---

27-1650

**15 mm Displacement Transducer (lead 0.7 m)**

---

27-1873

**DS8.0 One-Dimensional Consolidation Software**

---

29-5020

**Soft Headed Mallet.**

---

34-0192

**Slump Test Set BS & ASTM. C/W Slump Cone Base Plate Steel Rule Tamping Rod & Funnel.**

---

34-0450

**Apparatus for Determining Flow In Concrete (Flow Table).**

---

34-2910

**Compacting Bar 25mm Sq X 380mm**

---

34-3265

**Air Entrainment Meter B Type Complete with Carrying Case. Supplied with Aluminium Tamping Bar.**

---

34-4520

**100mm Cube Mould 4-Part Clamp Type. Cast Iron Construction. BS EN Compliant.**

---

34-4570

**150mm Cube Mould 4-Part Clamp Type. Cast Iron Construction. BS EN Compliant.**

---

34-5053

**150 X 150 X 750mm Beam Mould.**

---

34-8100/09

**Buoyancy Balance 16Kg X 0.1G**

---

34-8105

**Cradle**

---

35-1480

**Standard Concrete Test Hammer**

---

35-2302/09

**Ultrasonic Concrete Tester 110-240V 50/60Hz 1Ph**

---

---

35-2505

**Crack Detection Microscope Magnification X 40 Measuring Range of 4mm In 0.02mm Divisions**

---

36-3280/01

**ADR Touch SOLO 2000 BS EN Compression Machine with Digital Readout and Self Centring Platens.**

---

37-5110

**EN 12390-3/4 Distance Piece - 20 mm Depth**

---

37-5120

**EN 12390-3/4 Distance Piece - 50 mm Depth**

---

37-5170

**EN 12390-3/4 Distance Piece - 80 mm Depth**

---

37-5180

**EN 12390-3/4 Distance Piece - 100 mm Depth**

---

37-6130

**100kN Flexural (Beams) Frame. Supplied Without Specimen Bearers and Fitting Kit.**

---

37-6131

**BS 1881 Specimen Bearer Assembly 38mm Dia X 160mm Length.**

---

37-6138

**100kN Flexural Fitting Kit (ADR) Used for Connecting Flexural Frames to ADR Compression Machines.**

---

42-1005

**Wire Basket Brass with Handle Nominal 6000Cm<sup>3</sup> Capacity with 1.7mm Wire Mesh.**

---

42-2950

**Quantab Chloride Titrator Type 1175 Titration Range 0.005% - 0.1% 30-600ppm NaCl Pack of 40 Strips.**

---

42-2952

**Quantab Chloride Titrator Strips Type 1176 Titration Range 0.05%-1% (300-6000 ppm) NaCl Pack of 40**

---

42-2958

## Sulphate Test Strips

---

430-020

**Digital pH/Temp/mV Meter with electrode, carrying case and pH 4 & 7 buffers**

---

47-0202

**Digital Asphalt Thermometer**

---

47-0202/10

**250 Asphalt Probe**

---

78-0760

**Clamped Boss Load Ring - 28.0 kN**

---

78-1250/01

**225 Litre Drying Oven**

---

78-5527/01

**Electronic Balance - 32 000 g x 1.0 g**

---

79-0200

**200mm Dia BS Sieve 600Mic Stainless Steel Mesh.**

---

79-0220

**200mm Dia BS Sieve 850Mic Stainless Steel Mesh.**

---

81-0220

**Aluminium Scoop Large**

---

81-0222

**Scoop - 250 mm long**

---

81-0340

**Float - Plasterer's type**

---

81-0705

**Wire Brush**

---

81-3040

**Sample Container - Tinned Steel 2.5 litres**

---

81-3540

**Sample Container - Plastic 10 litres**

---

# Contents

www.ele.com  
+44 (0) 01525 249 200



81-3545

**Transport/Storage Container**

---

81-4030

**Sample Tray - 406 x 406 x 50 mm**

---

81-4080

**Sample Tray - 610 x 610 x 63 mm**

---

81-4230

**Sample Tray - 1200 x 1160 x 50 mm**

---

82-0420

**Measuring Cylinder - Glass 250 ml**

---

82-0460

**Measuring Cylinder - Glass 500 ml**

---

82-1060

**Volumetric Flask - 1000 ml**

---

82-7341

**Mould Oil (25 Litre Drum)**

---





**Riffle Box 38mm Slot Width Complete with Three Containers.**

Code: 23-3200

Product Group: [Riffle Boxes \(Sample Dividers\)](#)

Manufactured from heavy-gauge sheet metal. BS recommended maximum particle size of 25 mm. EN recommended maximum particle size of 19 mm. Includes 8 slots each with a 38 mm slot width and an overall approximate capacity of 11 litres.

**Standards**

BS 1377, BS 1924, BS 812, EN 932-1

**Specification**

Recommended max particle size BS	25
Recommended max particle size EN	19
Slot width mm	38
No. of slots	8
Approx. capacity kg	11
Weight kg	17.5





## Riffle Box 50mm Slot Width Complete with Three Containers.

Code: [23-3300](#)

Product Group: [Riffle Boxes \(Sample Dividers\)](#)

Manufactured from heavy-gauge sheet metal. BS recommended maximum particle size of 33 mm. EN recommended maximum particle size of 25 mm. Includes 8 slots each with a 50 mm slot width and an overall approximate capacity of 14 litres.

## Standards

BS 1377, BS 1924, BS 812, EN 932-1

## Specification

Recommended max particle size BS	33
Recommended max particle size EN	25
Slot width mm	50
No. of slots	8
Approx. capacity kg	14
Weight kg	22.5



## BS Standard Compaction Mould 1000Cm Capacity.

Code: [24-9000](#)

Product Group: [BS/EN compaction test 2.5kg](#),  
[Accessories for BS compaction and CBR](#)

Plated steel standard compaction mould to BS 1377, comprising of a collar mould body and base plate with quick release wing nuts for easy dismantling.

## Standards

BS 1377-4, BS 1924-2

## Specification

Mould volume	1 litre
Dimensions	105 mm dia x 115.4 mm high
Construction	All steel, threaded studs with wing nuts, plated.
Weight	5.5 kg



## Standard Compaction Rammer 2.5kg BS1377

Code: [24-9002](#)

Product Group: [BS/EN compaction test 2.5kg](#)

50mm diameter with 300mm drop, manufactured from corrosion protected steel.

## Standards

BS 1377-4, BS 1924-2

## Specification

Rammer	50 mm dia, 2.5 kg
Drop	300 mm
Guide Sleeve	Machined steel tubing with air pressure release holes
Finish	Corrosion resistant
Weight kg	4.2



## BS Compaction Rammer 4.5Kg Wt.

Code: [24-9004](#)

Product Group: [BS/EN compaction test 4.5kg, Straightedge](#)

50mm diameter with 450mm drop, manufactured from corrosion protected steel.

## Standards

BS 1377-4, BS 1924-2

## Specification

Rammer	50 mm dia, 4.5 kg
Drop	450 mm
Guide Sleeve	Machined steel tubing with air pressure release holes
Finish	Corrosion resistant
Weight kg	7.5



## Cbr-Test 50 Machine 50kN Capacity BS and ASTM Supplied with Stabilising Bar.

Code: [24-9150/01](#)

Product Group: [CBR Load Frames](#)

- Single speed machine (BS/EN and ASTM)
- Rapid platen adjustment
- Complete with stabilising bar
- Compact, bench-mounting design
- Options for mechanical or electronic measurement

Designed for performing laboratory CBR tests to BS 1377, EN13286-47 and ASTM D1883, this bench mounting machine comprises a twin column frame incorporating a motorised drive system. Rapid adjustment of the platen is provided, which enables daylight to be taken up quickly and also close control of application of a seating load.

## Standards

BS 1377, BS 1924, EN 13286-47, ASTM D1883, AASHTO T193

## Specification

Dimensions (l x w x h)	550 x 400 x 1220 mm
Max vertical clearance	800 mm
Horizontal clearance	255 mm
Platen diameter	133 mm
Platen travel	105 mm
Weight kg	80



## Penetration Piston

Code: [24-9182](#)

Product Group: [Penetration Measurement](#)

1.935 mm<sup>2</sup> (3 in<sup>2</sup>) area foot of case hardened steel.  
Designed to fit all ELE load rings.



## Penetration Dial Gauge BS

Code: [24-9186](#)

Product Group: [In-situ CBR](#), [Conversion of In-situ to Laboratory CBR](#), [Penetration Measurement](#)

Complete with rack extensions and chisel edge anvil. 25 mm travel x 0.01 mm divisions.

## Standards

BS 1377, BS 1924





## Bracket and Adaptor. Dual Purpose Mounting Bracket for CBR Penetration Gauges EL24-9184/EL24-9186

Code: [24-9188](#)

Product Group: [In-situ CBR](#), [Conversion of In-situ to Laboratory CBR](#), [Penetration Measurement](#)

Dual purpose mounting bracket for CBR penetration dial gauges. Allows gauge to be fixed to penetration piston or load ring.

## Standards

BS 1377, BS 1924



## BS Cbr Mould Body.

Code: 24-9198

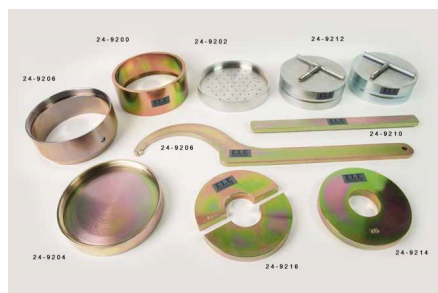
Product Group: BS EN CBR mould, Accessories for  
BS compaction and CBR

## Standards

ASTM D1883, AASHTO T193

## Specification

Mould	152 x 127 mm (inside diameter x height)
Collar	51 mm height, fits both ends of mould
Base plate	Solid, fits both ends of mould
Construction	All steel, plated
Weight kg	7.3



## BS Extension Collar

Code: [24-9200](#)

Product Group: [BS EN CBR mould accessories](#),  
[Accessories for BS compaction and CBR](#)

## Standards

EN 13286-4, BS 1377-4, BS 1924-2



## BS Perforated Base Plate.

Code: [24-9202](#)

Product Group: [BS EN CBR mould accessories](#)

To fit mould body

## Standards

EN 13286-4, BS 1377-4, BS 1924-2



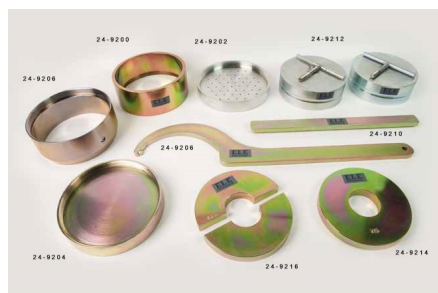
## BS Solid Base or Top Plate

Code: [24-9204](#)

Product Group: [BS EN CBR mould accessories](#),  
[Accessories for BS compaction and CBR](#)

## Standards

EN 13286-4, BS 1377-4, BS 1924-2



## Cbr Cutting Collar with Area Ratio of 21.9% to Fit BS Moulds.

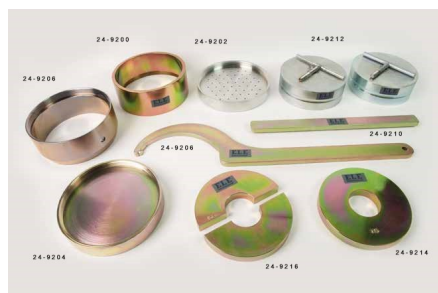
Code: [24-9206](#)

Product Group: [BS EN CBR mould accessories](#)

To fit BS/EN mould body.

## Standards

EN 13286-4, BS 1377-4, BS 1924-2



## C-Spanner for BS Cbr Mould. Two Required.

Code: [24-9208](#)

Product Group: [BS EN CBR mould accessories](#)

To fit BS/EN CBR moulds and collars. Two required.

## Standards

BS 1377-4, BS 1924-2, EN 13286-4





## Base Plate Tool for BS Mould

Code: [24-9210](#)

Product Group: [BS EN CBR mould accessories](#)

To fit into base plate to assist removal from mould body.

## Standards

EN 13286-4, BS 1377-4, BS 1924-2



## Static Compaction Plug.

Code: [24-9212](#)

Product Group: [BS EN CBR mould accessories](#)

Steel, 150 mm dia x 51 mm thick. Complete with removable handle.

## Standards

EN 13286-4, BS 1377-4, BS 1924-2



## 2Kg Annular Surcharge Weight

Code: [24-9214](#)

Product Group: [BS EN CBR mould accessories](#)

## Standards

EN 13286-4, BS 1377-4, BS 1924-2



## 2Kg Split Surcharge Weight.

Code: [24-9216](#)

Product Group: [BS EN CBR mould accessories](#)

## Standards

EN 13286-4, BS 1377-4, BS 1924-2



## Filter Papers 150mm Dia Equivalent to Whatman No 1. Box of 100.

Code: [24-9220](#)

Product Group: [BS EN CBR mould accessories](#)

Box of 100.

## Standards

EN 13286-4, BS 1377-4, BS 1924-2



## Spacer Disc 5-7/8" Diameter

Code: [24-9237](#)

Product Group: [Spacer Discs](#)

5-7/8" diam. x 2" h. (147.6 x 50.8 mm).

## Specification

Construction

Steel; machined on all sides.

Finish

Plated.

Weights

Net 15.4 lbs. (7 kg).



## Swell Plate

Code: [24-9260](#)

Product Group: [Expansion \(swell\) Test Equipment](#),  
[Swell Plate](#)

With adjustable stem.

## Standards

ASTM D1883, AASHTO T193

## Specification

Base Plate	5 15/16" diam. (150.8mm); perforated.
Contact Head	Adjustable; locks on stem with knurled nut.
Construction	Aluminium
Weight	Net 2-1/2 lbs. (1.1 kg).





Swell Stand

Code: [24-9262](#)  
Product Group: [Expansion \(swell\) Test Equipment, Tripod Attachment](#)  
For mounting Swell Dial Gauge in position on CBR mould collar.

Standards

ASTM D1883, AASHTO T193

Further Information

Requires dial indicator; not included, order separately

Specification

Construction	Machined, one-piece cast aluminum.
Contact Head	Integral part of ssembly; holds dial indicator.
Construction	2" I. (50.8 mm) included.
Weight	Net 1 lb. (0.4 kg).

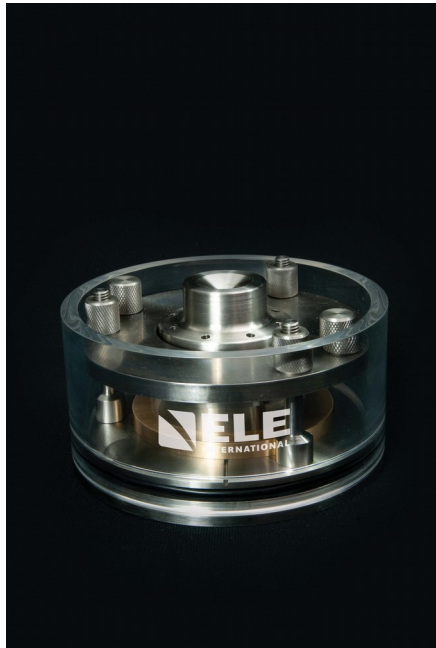


## Dial Gauge 25mm Travel X 0.01mm Divisions.

Code: [24-9275](#)

Product Group: [Expansion \(swell\) Test Equipment](#)

25 mm travel x 0.01 mm.

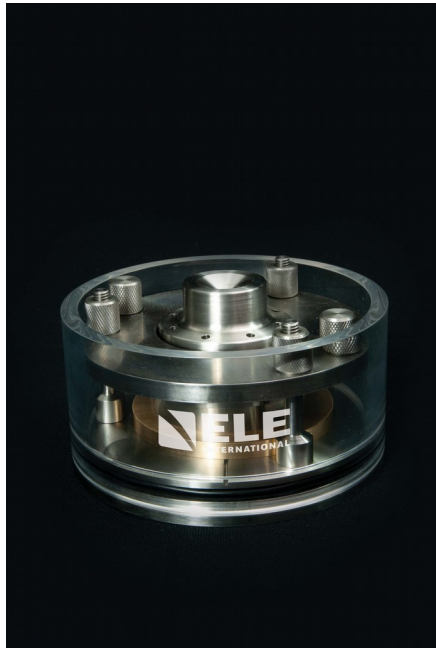


## 50mm Stainless Steel Consolidation Cell

Code: [25-0446](#)

Product Group: [Stainless Steel Consolidation Cells](#)

- Stainless Steel Construction
- Long lasting
- Includes upper, lower porous discs and cutting ring
- Complies to ISO 17892-5 and BS 1377-5



## 75mm Stainless Steel Consolidation Cell

Code: [25-0467](#)

Product Group: [Stainless Steel Consolidation Cells](#)

- Stainless Steel Construction
- Long lasting
- Includes upper, lower porous discs and cutting ring
- Complies to ISO 17892-5 and BS 1377-5



## AUTO Soils Consolidator

Code: 25-0500/09

Product Group: AUTO Soils Consolidator, AUTO Soils Consolidator

Designed and engineered for geotechnical laboratories to deliver new levels of efficiency in testing procedures.

The one-dimensional consolidation test is the most common, and sometimes referred to as the oedometer or incremental loading oedometer test. Radially constrained samples are loaded in a sequence starting with a stress close to the overburden pressure of the sample. The loading is then doubled for each stage; typically 4 or 5 times, with a final unloading sequence.

### FEATURES:

- Available in one universal model 90-240 V AC, 50-60 Hz, 1 ph
- 7" waterproof, colour, graphical touchscreen
- Multi language
- No compressor - stepper motor improves accuracy across entire 15 kN load range
- Variable speed to suit sample type
- Can change target loads during a test
- Flexible reports
- Compatible with latest DS8 software

### CUSTOMER BENEFITS:

- Fully automatic - reduces testing time
- Compact footprint - saves laboratory space
- Save configurations for easy set-up of multiple cells and repeat tests
- Control up to 16 AUTO Soils Consolidator machines from one PC - improves laboratory efficiency
- Ability to include manual consolidation frames - avoids redundancy
- Wide range of sample cells

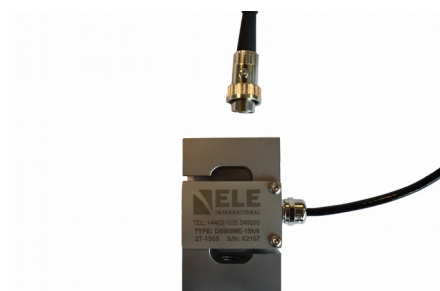
Please note: S type load cell and a linear variable displacement transducer (LVDT) must be ordered

seperately

---

## Specification

Frame capacity	15 kN
Travel	15 mm
Standards	BS 1377-5, superseded by ISO 17892-5, ASTM D2435/D2435M, AASHTO T216, ASTM D4546
Cell sizes (mm)	35, 50, 70, 75, 100, 112.8
Cell sizes (inches)	2, 2.416, 2.5, 3, 4
Max sample size	≤ 112.8 mm
Max piston travel	26 mm
Speed	10 mm per minute
Fast approach speed	40 mm per minute
Max number of units per PC	16
Unit display	High resolution, 7" colour
Dimensions	290 x 360 mm
Weight	32 kg
Clearance vertical/Horizontal	270/220 mm
Power supply	90-240 V AC, 50-60 Hz, 1 ph



## 15 kN S Type Load Cell (lead 0.7 m)

Code: [27-1565](#)

Product Group: [AUTO Soils Consolidator](#), [AUTO Soils Consolidator](#)

Used for AUTO Soils Consolidator (25-0500/09)

## Specification

Excitation	10 V
Output	3.6mV/V nominal
Capacity	15 kN (3400lbf)
Fixing	M16
Weight	0.9 kg (2lbs)
Connection	0.7 m 5W DIN





## 15 mm Displacement Transducer (lead 0.7 m)

Code: [27-1650](#)

Product Group: [AUTO Soils Consolidator](#), [AUTO Soils Consolidator](#)

Used for AUTO Soils Consolidator (25-0500/09)

## Specification

Excitation	10V
Output	2.3mV/V nominal
Capacity	15 mm (0.6 inch)
Diameter	19 mm
Weight	0.3 kg (0.7lbs)
Connection	0.7 m 5W DIN



## DS8.0 One-Dimensional Consolidation Software

Code: 27-1873

Product Group: [Automatic Consolidation Software](#),  
[Automatic Consolidation Software](#)

The AUTO Soils Consolidator has been launched alongside the latest version of ELE's DataSystem soil test management software which is loaded with the current BS, ASTM and AASHTO standards, and is compliant with Windows 10.

By automating the test procedure, DS8 lowers the cost of testing and frees staff time for other work. For example, manual systems rely on a user being available immediately when each step is completed, which causes inevitable delays. The AUTO Soils Consolidator also speeds up test times by simplifying the set-up procedure; intuitively taking the operator through the procedure, ensuring that the correct standard is applied and that the set-up is appropriate for the sample and cell. Loading and unloading increments can be defined by users and configuration templates can be stored so that subsequent tests can be set up quickly and easily. With Ethernet connectivity, DS8 is able to manage up to 16 machines simultaneously, so with a small footprint it is simple to set up and run a comprehensive geotechnical testing facility in a small laboratory. This connectivity also enables users to monitor tests remotely 24/7, and also provides an opportunity for remote service diagnostics. Real-time graphical outputs are available in the DS8 software, and operators now have the ability to make changes to tests as they proceed; target loads for subsequent stages can now be changed after a test has started, without having to restart the test from the beginning. The reporting capability of DS8 has been significantly expanded over previous versions. For example, users now have the ability to select consolidation plots to be included in the report, and templates can be slightly modified with results presented in a customisable pdf format.



## Soft Headed Mallet.

Code: [29-5020](#)

Product Group: [Field density tools](#)



## Slump Test Set BS & ASTM. C/W Slump Cone Base Plate Steel Rule Tamping Rod & Funnel.

Code: [34-0192](#)

Product Group: [Slump Test](#)

BS and ASTM comprising of slump cone, base plate, steel rule, tamping rod and funnel.

### Further Information

**\*\*NOT AVAILABLE FOR SALE IN THE USA\*\***



## Apparatus for Determining Flow In Concrete (Flow Table).

Code: 34-0450

Product Group: Flow Table

Comprising of mould, flow table, tamper, metre rule, float and stopwatch

## Standards

EN 12350-5

## Further Information

**\*\*NOT AVAILABLE FOR SALE IN THE USA\*\***



## Compacting Bar 25mm Sq X 380mm

Code: [34-2910](#)

Product Group: [Accessories for Concrete Moulds,](#)  
[Precision Air Entrainment Meter](#)

Steel, 380 x 25 mm (length x square) tamping area,  
EN/BS.

## Standards

EN 12390-1



## Air Entrainment Meter B Type Complete with Carrying Case. Supplied with Aluminium Tamping Bar.

Code: **34-3265**

Product Group: **Precision Air Entrainment Meter, Precision Air Entrainment Meter**

- 7 litre capacity
- Shock-proof pressure gauge mounting
- Lightweight aluminum construction
- Heavy-duty plastic carrying case for easy transport to site

The proper control of entrained air in concrete is recognized as one of the most important functions in modern concrete manufacture. For the concrete engineer, the ELE Precision Air Entrainment Meter offers an instrument for the testing and designing of concrete mixes.

The instrument is designed so that the operating parts form an integral unit. The container is rigid, thus providing an accurate device for the performance of unit weight testing. For convenience, the tare weight in grams is stamped on the bottom. When used with the nomograph supplied within the operating instructions, the air meter provides quick and easy particle density and percent of free moisture in aggregate determinations.

Complies with BS 1881-106 EN 12350-7 ASTM C231

## Standards

ASTM C231, AASHTO T152

## Specification

Capacity	7 Litres
Readings	Up to 22% entrained air
Accuracy	1/4% full scale
Aggregate Size	2" (50.8 mm) maximum
Container	With tare weight stamped on bottom; 2-piece clamping device for positive seal.
Water	4 oz required
Initial Pressure	Approx. 10 strokes needed
Pressure Gauge	In shock-proof mounting
Tamping Rod	Aluminium; 24" (610 mm) long
Dimensions	9-3/4" diam. X 13-1/4" h. (248 x 337 mm)
Weight	Net 15 lbs (8 kg)







## 100mm Cube Mould 4-Part Clamp Type. Cast Iron Construction. BS EN Compliant.

Code: [34-4520](#)

Product Group: [Cube Moulds](#), [Cube Moulds](#)

4-part with clamp attached base plate.

## Standards

EN 12390-1, EN 12390-2

## Specification

Construction

Bolted sides and clamped base  
plate

Finish

Painted

Weight

20 lb (9.1 kg)



## 150mm Cube Mould 4-Part Clamp Type. Cast Iron Construction. BS EN Compliant.

Code: [34-4570](#)

Product Group: [Cube Moulds](#), [Cube Moulds](#)

4-part with clamp attached base plate.

## Standards

BS 1881-108, EN 12390-1, EN 12390-2

## Specification

Construction	Bolted sides and clamped base plate
Finish	Painted
Weight	42 lb (19.1 kg)



## 150 X 150 X 750mm Beam Mould.

Code: [34-5053](#)

Product Group: [Beam Moulds](#)

Complete with base plate

Weight 43 kg

## Standards

EN 12390-1, EN 12390-2

## Further Information

**\*\*NOT AVAILABLE FOR SALE IN THE USA\*\***



## Buoyancy Balance 16Kg X 0.1G

Code: [34-8100/09](#)

Product Group: [Hardened Concrete - Buoyancy Balance, Percentage Refusal Density \(PRD\)](#)

Includes:

- Lifting frame for Buoyancy balances
- Expansion tank 4 gallon capacity
- Electronic Balance 16kg x 0.1g with auto density calculation

## Standards

EN 12697-32, EN 13280-4, BS 598-104

## Further Information

**\*\*NOT AVAILABLE FOR SALE IN THE USA\*\***



## Cradle

Code: 34-8105

Product Group: ELE Bouyancy Balance, Hardened Concrete - Buoyancy Balance, Percentage Refusal Density (PRD)

## Standards

EN 12697-32, EN 13280-4, BS 598-104, EN 1097-6



## Standard Concrete Test Hammer

Code: [35-1480](#)

Product Group: [Concrete Test Hammer, Surface Hardness](#)

The hammer is intended for testing the quality of concrete in finished structures such as buildings and bridges. Supplied complete with carrying case and carborundum stone, the hammer is suitable for testing concrete with compressive strengths of 10 to 70 N/mm<sup>2</sup>.

## Standards

ASTM C805

## Specification

Body	Includes indicator scale, calibration curves.
Calibration Curves	Rebound number vs. compressive strength.
Rubbing Stone	Prepares test surface.
Accuracy	Within 15 %.
Carrying Case	Plastic.
Weight	Net 3 lbs. (1.4 kg).



## Ultrasonic Concrete Tester 110-240V 50/60Hz 1Ph

Code: 35-2302/09

Product Group: Ultrasonic Detection, Ultrasonic  
Concrete Test

35-2302/09 is the most versatile Concrete Tester to date. It has all the functions of the classic Concrete Tester, but offers additional benefits. Designed with laboratory use in mind, its compact size, rugged construction and optimized power consumption make it equally suitable for on-site use.

Along with the traditional transit time and pulse velocity measurement, 35-2302/09 offers path length measurement, perpendicular crack depth measurement and surface velocity measurement.

Optimized pulse shaping gives greater transmission range at lower voltage levels. This coupled with automated combination of the transmitter voltage and the receiver gain ensures an optimum received signal level, ensuring accurate and stable measurements.

The waveform can be viewed either via an external oscilloscope connection or directly on a connected PC screen.

Full remote control capability completes the package.

Complete with two 54 kHz transducers each with 3.6 metres of cable, coupling agent, carrying case and instruction manual.

Applications include pulse velocity determination, quality assessment and uniformity, modulus of elasticity measurement, curing status evaluation, crack depth estimation, assessment of fibre reinforced concrete.

Consists of display unit, 2 transducers (54 kHz), 2 BNC cables 1.5m, couplant, calibration rod, USB charger with USB-cable, 4x AA (LR6) batteries, data carrier with software, documentation and carrying case.

## Standards

BS 1881-203, EN 12504-4, ASTM C597, D2845

## Further Information

For 110 - 240 V AC, 50 - 60 Hz, 1 ph.

## Specification

Measuring range	Up to 15 m depending on concrete quality
Bandwidth	20 to 500 kHz
Technology	Ultrasonic pulse velocity
Measuring resolution	0.1 us
Pulse voltage UPV	125 to 500 V
Receiver gain	1x, 10x, 100x, auto
Pulse shape	Square wave
Nominal transducer frequency	24-500 kHz
Number of channels	1





## Crack Detection Microscope Magnification X 40 Measuring Range of 4mm In 0.02mm Divisions

Code: 35-2505

Product Group: Crack Detection, Crack Detection  
Microscope

Specifically designed for measuring crack width in concrete, this high definition microscope operates via an adjustable light source provided by high power batteries.

Supplied in a pocket sized carrying case.

### Specification

Magnification	X 35 .
Measuring Range	4 mm.
Divisions	0.02 mm.
Dimensions	1.5" x 3.5" x 6" (40 x 90 x 150 mm) in case.
Weight	Net 19.4 oz. (550 g).



## ADR Touch SOLO 2000 BS EN Compression Machine with Digital Readout and Self Centring Platens.

Code: 36-3280/01

Product Group: BS EN Compression Machines

The ADR Touch range of 2000 kN and 3000 kN capacity compression machines has been designed to meet the need for reliable and consistent testing. The load frame is a welded steel fabrication carrying the ball-seated upper platen. Positively located on the loading ram, which is protected from debris by a flexible cover, the lower platen is marked for the centring of cube and cylinder specimens. Self-centring lower platens for cube location are supplied as standard on EN machines and are available as an optional extra on the standard machine. The two machines for cube testing to EN standards are assembled and aligned using a special compression frame stability tester.

The dimensions of the frame allow the testing of concrete cylinders up to 320 mm long x 160 mm diameter, 150 and 100 mm square cubes, and on EN/BS machines, 200 mm square cubes. Kerbs and flagstones may also be tested on ADR machines as well as 150 mm and 100 mm square section beams to ASTM C78 using the optional 100 kN flexural frames which are connected to the power pack.

## Standards

EN 12350-6, NF P18-411

## Further Information

**\*\*Not available for sale in the USA\*\***

ADR Touch BS EN 2000 and 3000 kN compression machines are supplied complete with self-centring lower platen and safety gates fitted with interlock switches ready for testing 300 x 150 mm diameter cylinders.

Whilst delivering all the features and reputation of the established ADR Series with its extensive design history, the new and improved user interface provides a high quality platform for testing that enhances the performance of ELE's compression machines.

New, sophisticated electronics further the benefits of simplified operation, whilst delivering the highest levels of accuracy in testing concrete and cement/mortar samples, satisfying the needs of Quality Control Managers, Lab Managers and Technicians.

## ACCURACY & SAVINGS

The new ADR Touch Series, with 145mm (5.7") high resolution QVGA touch screen interface and intuitive menu-driven operation, reduces the time taken to set up the machine and perform tests, reducing the time to train staff by up to 25%.

- Up to 6 sample types can be set as favorites, enabling one-touch set up for repeat testing.
- Full, QWERTY touch pad for input of test data.

Most testing errors produce lower strength results. Noncompliant loading rates can generate errors in measured strength. The user interface includes real-time display of load vs. time, further ensuring accurate and consistent test results and providing "goodness of test" data to improve traceability in your QC operations.

## TRACEABILITY & DATA QUALITY

The ADR range now provides improved data quality and traceability in due diligence cases - it is now possible to demonstrate traceability all the way from the machine/user to the accreditation body, increasing your reputation and peace of mind - all test results now come complete with the machine serial number attached.

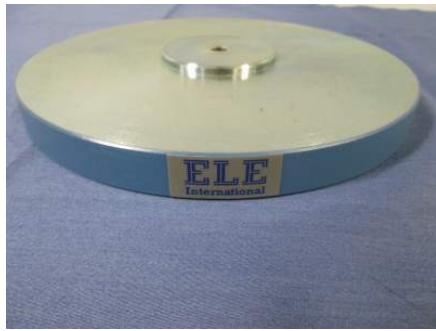
- Enhanced USB data communications between PC and machine - eliminating the need for download software.
- Two gigabytes of storage memory.
- Full customization of sample sizes - stress calculations are automatically recalculated.

## USER SAFETY

With full safety gates as standard, total systems diagnostics, ram run-out switches and overload warnings ensure the safety of your employees and the reliability of your machine.

## Specification

Testing Standards	BS EN 12390-4, BS EN 12390-3, BS EN 12390-4, BS EN 12390-5, EN 12504-1, EN 1354, EN 1521, EN 3161, EN 1338, EN 772-6, EN 13286-41, BS 3892-3, BS 187, BS 6717, BS EN ISO 7500-1, ASTM E4
Capacity	2000 kN
Cubes (Concrete)	Up to 200 mm
Cylinders (Concrete)	Up to 160 x 320 mm
Blocks	Via optional Platen Handling System
Flexural Testing	Via Flexural Frame
TFV and ACV	Yes
Voltage Supply	220-240V 50/60 Hz 1Ph.
Frame Class (Stability)	Tested
Frame Type	Welded
Max vert. Clearance	340 mm
Max hor. Clearance	355 mm
Platen Sizes	Lower 220mm sq, Upper 300mm dia
Max Ram Travel	50 mm



## EN 12390-3/4 Distance Piece - 20 mm Depth

Code: [37-5110](#)

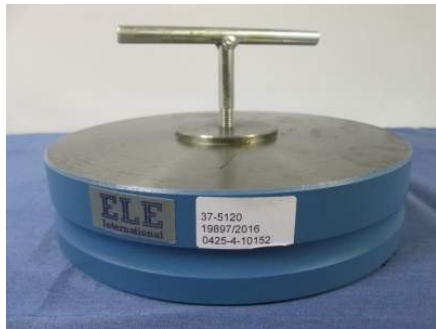
Product Group: [Distance Pieces](#)

### Standards

EN 12390-3, BS 1881-115

### Further Information

**\*\*Not available for sale in the USA\*\***



## EN 12390-3/4 Distance Piece - 50 mm Depth

Code: [37-5120](#)

Product Group: [Distance Pieces](#)

### Standards

EN 12390-3, BS 1881-115

### Further Information

**\*\*Not available for sale in the USA\*\***



## EN 12390-3/4 Distance Piece - 80 mm Depth

Code: [37-5170](#)

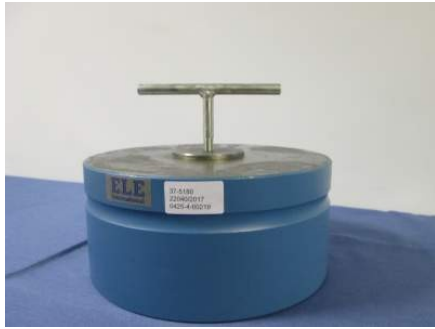
Product Group: [Distance Pieces](#)

### Standards

EN 12390-3, BS 1881-115

### Further Information

**\*\*Not available for sale in the USA\*\***



## EN 12390-3/4 Distance Piece - 100 mm Depth

Code: [37-5180](#)

Product Group: [Distance Pieces](#)

### Standards

BS 1881-115, EN 12390-3

### Further Information

**\*\*Not available for sale in the USA\*\***



## 100kN Flexural (Beams) Frame. Supplied Without Specimen Bearers and Fitting Kit.

Code: 37-6130

Product Group: [Flexural Testing for Beams, Flexural Frame Attachments](#)

- Open sided for ease of specimen loading
- Meets EN 12390-5, 1521, 13161, 772-6 and ASTM C78 for standard section beams
- Optional ball seating assembly

This rigidly constructed, open sided frame is suitable for testing 100 mm and 150 mm square-section beams. The frame supports a hydraulic ram and upper sub-platen assembly incorporating a spherical seating. The upper and lower sub-platens will accept various specimen loading bearers, which are supplied separately.

Please note, a flexural fitting kit is required, see the accessories tab for options.

## Standards

BS 1881-118, EN 12390-5





## **BS 1881 Specimen Bearer Assembly 38mm Dia X 160mm Length.**

Code: [37-6131](#)

Product Group: [Flexural Testing for Beams](#)

Comprising 2 self-aligning upper bearers, 1 self-aligning and 1 fixed lower bearer. Roller bearers are 38 mm diameter x 160 mm long. Suitable for 3- or 4-point flexural testing of beams.

### **Standards**

BS 1881-118, EN 12390-5

### **Further Information**

**\*\*Not available for sale in the USA\*\***



## 100kN Flexural Fitting Kit (ADR) Used for Connecting Flexural Frames to ADR Compression Machines.

Code: [37-6138](#)

Product Group: [Accessories to connect ELE compression machines to the flexural/transverse frames](#)

These flexural frames can be used with a wide range of ELE compression machines. Simply select one of two fitting kits designed to link the flexural frame to either the ADR-Auto range of compression machines or any other ADR compression machine.

## Further Information

\*\*Not available for sale in the USA\*\*



## Wire Basket Brass with Handle Nominal 6000Cm<sup>3</sup> Capacity with 1.7mm Wire Mesh.

Code: 42-1005

Product Group: Particle Density (specific gravity) and Water Absorption for Coarse Aggregates

Relative Density 200 mm diameter x 190 mm deep, 1.70 mm wire mesh.

Complies to EN 1097-6, EN 12697-6, BS 812, ASTM C127, AASHTO T85

### Standards

EN 1097-6, EN 12697-6, BS 812, ASTM C127, AASHTO T85

### Further Information

**\*\*NOT AVAILABLE FOR SALE IN THE USA\*\***



**Quantab Chloride Titrator Type 1175**  
**Titration Range 0.005% - 0.1% 30-600ppm**  
**NaCl Pack of 40 Strips.**

Code: [42-2950](#)

Product Group: [Chloride Content: Rapid Method](#),  
[Chloride Content: Rapid Method](#)

Type 1175 titration range 0.005% to 0.1% (30 to 600 ppm) NaCl. Pack of 50.



## Quantab Chloride Titrator Strips Type 1176 Titration Range 0.05%-1% (300-6000 ppm) NaCl Pack of 40

Code: [42-2952](#)

Product Group: [Chloride Content: Rapid Method](#),  
[Chloride Content: Rapid Method](#)

Type 1176 titration range 0.05% to 1% (300 to 6000 ppm) NaCl. Pack of 40.



## Sulphate Test Strips

Code: [42-2958](#)

Product Group: [Sulphate Content: Rapid Method](#)

Detection range 200 to 900 mg/l. Pack of 100.



## Digital pH/Temp/mV Meter with electrode, carrying case and pH 4 & 7 buffers

Code: 430-020

Product Group: Paqualab Test Meters

Robust waterproof case offering IP66/67 protection

Manual/automatic temperature compensation

Easy to use re-calibration function

The 430-020 pH meter is a three-in-one instrument that features a large easy to read, LCD display that indicates pH over the range of -2 to 16 pH with a resolution of 0.01 pH, mV over the range of -1000 to 1000 mV and temperature over the range of -39.9 to 149.9°C with a resolution of 0.1°C. The LCD display features both low battery indication and a user selectable backlight.

The pH readings are either manually or automatically temperature compensated over the range of 0 to 100°C. To automatically compensate, it is necessary to utilise a thermistor temperature probe. Each unit incorporates an auto-power off facility that automatically turns the instrument off after ten minutes, maximising battery life.

The 430-020 has an integrated rubber seal to ensure complete water resistance and helps to reduce the possibility of damage in harsh environments. At the touch of a button, the instrument will automatically re-calibrate (two-point autocal) itself when used in conjunction with pH buffer solutions.

Each unit incorporates an easy to use BNC connector and Lumberg screw-locking type connector.

## Further Information

### Specification

Range	Resolution	Accuracy
-2 to 16 pH	0.01 pH	± 0.02 pH
± 1000 mV	1 mV	± 1 mV
-39.9 to 149.9 °C	0.1 °C	± 0.4 °C (-10 to 70 °C)
Battery	3 x 1.5 volt AAA	
Battery Life	Maximum 5 years (2500 hours)	
Sensor Type	Combination electrode/ thermistor	
Display	12 mm LCD	
Dimensions	32 x 71 x 141mm	

# Product Sheet

[www.ele.com](http://www.ele.com)  
+44 (0) 01525 249 200



Weight

230 grams





## Digital Asphalt Thermometer

Code: [47-0202](#)

Product Group: [Digital Asphalt Thermometer](#)

Comprises a hand-held digital thermometer with an operating range of -99 to +1372 °C with a switchable resolution between 0.1 and 1.0 °C. Operates on a 9V battery and utilises K-type thermocouple sensors.

## Standards

BS 2000-49, EN 1426, EN 13179-2, ASTM D5, AASHTO T49, IP 49

## Further Information

**\*\*NOT AVAILABLE FOR SALE IN THE USA\*\***

## Specification

Range	-50 to 1000°C
Resolution	Switchable 0.1 or 1.0°C
Weight	300 g



## 250 Asphalt Probe

Code: [47-0202/10](#)

Product Group: [Digital Asphalt Thermometer](#)

Has a heavy-duty and reinforced needle probe. It is built with a t-shaped polyethylene handle and has a maximum tip temperature of 250°C and a 300 mm long probe.

## Standards

BS 2000-49, EN 1426, EN 13179-2, ASTM D5, AASHTO T49, IP 49

## Further Information

**\*\*NOT AVAILABLE FOR SALE IN THE USA\*\***

## Specification

Max Reading	250°C
Length of probe	300 mm
Tip diameter (needle point)	6 mm



## Clamped Boss Load Ring - 28.0 kN

Code: 78-0760

Product Group: Clamped Boss Load Rings, Digital Tritest 50 Load Frame, Load Measurement, Proving Rings, CBR-Test 50 Machine, Conversion of In-situ to Laboratory CBR, Load Measurement, CBR Loading Press, Hand-Operated, Force measurement

## Standards

BS 1377, BS 1924

## Specification

Capacity: kN, kgf, lbf	28.0, 2800, 6000
Typical Design sensitivity: N/div, kgf/div, lbf/div	25.5, 2.54, 5.45
Overall height mm	248
Approx weight kg	5.4
Capacity	28 kN
Value of CBR	Average range of CBR
Capacity - lbf	6,000
Capacity - kN	28
Capacity - kgf	2,800
Typical Design Sensitivity - lbf/div	5.45
Typical Design Sensitivity - N/div	25.5
Typical Design Sensitivity - Kgf/div	2.54
Overall Height	9.76" (248 mm)
Approx Weight	11 .9 lbs.(5.4 kg)



## 225 Litre Drying Oven

Code: 78-1250/01

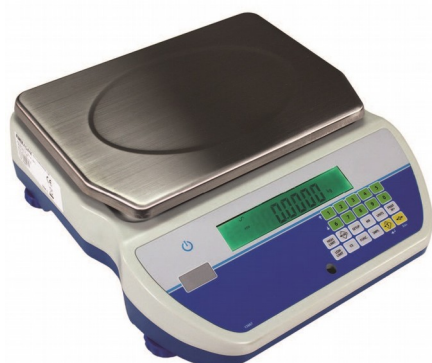
Product Group: Percentage Refusal Density (PRD),  
Oven Drying Method, Oven Drying Method, Oven  
Drying Method

## Standards

EN 12697-32, EN 13280-4, BS 598-104, BS 1377

## Specification

Capacity	225 litres
External Dimensions (l x w x h)	540 x 1040 x 940
Internal Dimensions (l x w x h)	440 x 920 x 600
Fluctuation	± 0.75°C
Rated power heater elements	2000 W
Shelves supplied	3
Shelf positions	4
Weight	80 kg



## Electronic Balance - 32 000 g x 1.0 g

Code: 78-5527/01

Product Group: [Electronic Balances](#)

- Backlit display changes colour for quick notification of checkweighing limits
- Colour-coded keys facilitate quick recognition of the most frequently used buttons
- Large, grade 304 stainless steel pan allows easy cleaning
- RS-232 interface is available to provide speedy connection to computers and printers
- Optional USB interface simplifies data communication
- Sealed keypad protects against dirt and spills
- Solid ABS housing is durable for industrial use
- Adjustable levelling feet help optimise setup
- Drip channels help divert spills away from the scales internal components
- Checkweighing with audible alarm
- External calibration allows for verification and adjustment with weights
- Internal counting resolution 1:600,000 for precise results
- Parts counting optimisation automatically refines piece weight as parts are added
- Parts counting with freely selectable sample sizes
- Preset tare function speeds the process of repetitive weighing
- Product look up (PLU) memory locations store a range of items for recall
- Programmable auto power-off to save energy
- Rechargeable battery included for operation almost anywhere

Applications: weighing, parts counting, checkweighing, check counting, accumulation of weight, percentage weighing and net total weighing.

## Further Information

**\*\*Not available for sale in the USA\*\***

## Specification

Capacity resolution	32000 g x 1.0 g
Pan size	210 x 300 mm
Mains and battery	Yes
Dimensions (w x d x h)	326 x 355 x 115 mm
Net weight	3.29 kg

## Product Sheet

[www.ele.com](http://www.ele.com)  
+44 (0) 01525 249 200



Weighing units

g, kg, lb, lb:oz, oz

Repeatability

1.0 g

Power supply

12VDC 50/60 Hz 800mA  
adapter/ Internal rechargeable  
battery



## 200mm Dia BS Sieve 600Mic Stainless Steel Mesh.

Code: 79-0200

Product Group: 200mm Diameter BS Sieves, 200mm Diameter BS Sieves, 200mm Diameter BS Sieves

### Standards

BS 410-1, ISO 3310, EN933-2

### Further Information

**\*\*NOT AVAILABLE FOR SALE IN THE USA\*\***



## 200mm Dia BS Sieve 850Mic Stainless Steel Mesh.

Code: 79-0220

Product Group: 200mm Diameter BS Sieves, 200mm Diameter BS Sieves, 200mm Diameter BS Sieves

### Standards

BS 410-1, ISO 3310, EN933-2, ISO 565

### Further Information

\*\*NOT AVAILABLE FOR SALE IN THE USA\*\*





## Aluminium Scoop Large

Code: [81-0220](#)

Product Group: [Slump Test, Scoops and Shovels](#)

### Further Information

\*\*Not available for sale in the USA\*\*



## Scoop - 250 mm long

Code: [81-0222](#)

Product Group: [Scoops and Shovels](#)

### Further Information

**\*\*NOT AVAILABLE FOR SALE IN THE USA\*\***



## Float - Plasterer's type

Code: [81-0340](#)

Product Group: [Trowels and Floats](#)

## Further Information

**\*\*NOT AVAILABLE FOR SALE IN THE USA\*\***



## Wire Brush

Code: [81-0705](#)

Product Group: [Accessories for Concrete Moulds,](#)  
[Miscellaneous Laboratory Hardware](#)

## Further Information

**\*\*Not available for sale in the USA\*\***



## Sample Container - Tinned Steel 2.5 litres

Code: [81-3040](#)

Product Group: [Moisture Content Tin and Sample Containers](#)

## Further Information

**\*\*NOT AVAILABLE FOR SALE IN THE USA\*\***



## Sample Container - Plastic 10 litres

Code: [81-3540](#)

Product Group: [Moisture Content Tin and Sample Containers](#)

## Further Information

**\*\*NOT AVAILABLE FOR SALE IN THE USA\*\***



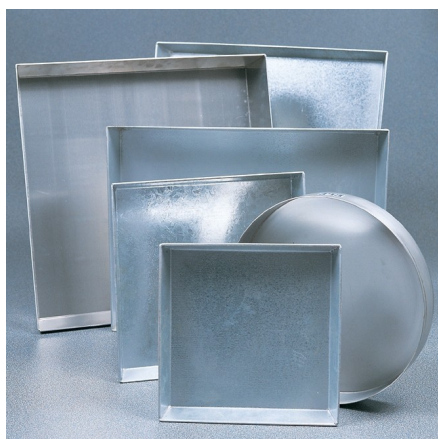
## Transport/Storage Container

Code: [81-3545](#)

Product Group: [Moisture Content Tin and Sample Containers](#)

## Further Information

**\*\*NOT AVAILABLE FOR SALE IN THE USA\*\***



## Sample Tray - 406 x 406 x 50 mm

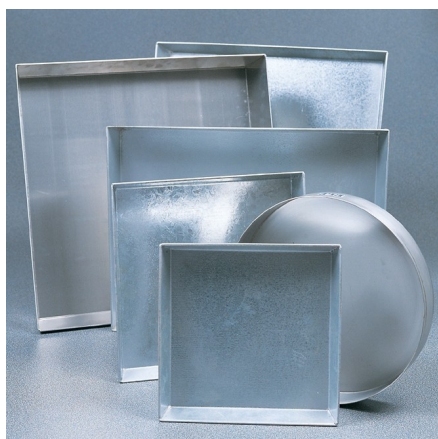
Code: [81-4030](#)

Product Group: [Sample Trays](#)

### Further Information

**\*\*NOT AVAILABLE FOR SALE IN THE USA\*\***





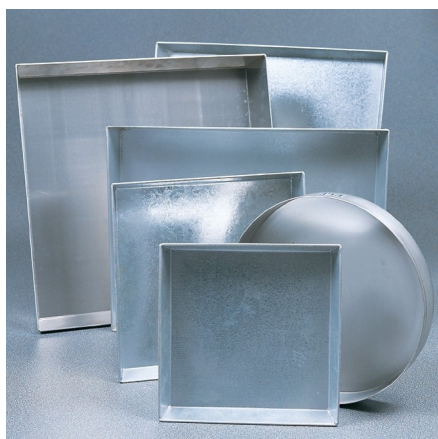
## Sample Tray - 610 x 610 x 63 mm

Code: [81-4080](#)

Product Group: [Sample Trays](#)

### Further Information

**\*\*NOT AVAILABLE FOR SALE IN THE USA\*\***



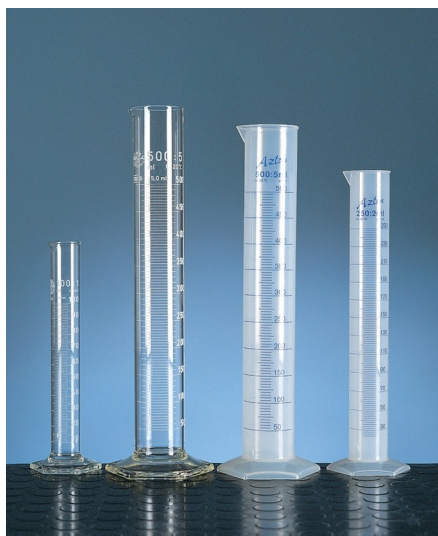
## Sample Tray - 1200 x 1160 x 50 mm

Code: [81-4230](#)

Product Group: [Sample Trays](#)

### Further Information

**\*\*NOT AVAILABLE FOR SALE IN THE USA\*\***



## Measuring Cylinder - Glass 250 ml

Code: [82-0420](#)

Product Group: [Measuring Cylinders, BS](#)

Soda glass, spouted, BS EN 4788.

## Further Information

**\*\*NOT AVAILABLE FOR SALE IN THE USA\*\***



## Measuring Cylinder - Glass 500 ml

Code: [82-0460](#)

Product Group: [Measuring Cylinders, BS](#)

Soda glass, spouted, BS EN 4788.

## Further Information

**\*\*NOT AVAILABLE FOR SALE IN THE USA\*\***



## Volumetric Flask - 1000 ml

Code: [82-1060](#)

Product Group: [Funnels and Flasks](#)

Soda glass, stoppered to BS ISO 1042 Class B.

## Further Information

**\*\*NOT AVAILABLE FOR SALE IN THE USA\*\***



## Mould Oil (25 Litre Drum)

Code: [82-7341](#)

Product Group: [Accessories for Concrete Moulds,](#)  
[Chemicals, Test and Reference Materials](#)

## Further Information

**\*\*Not available for sale in the USA\*\***