

IF IT'S WORTH BUILDING, IT'S WORTH TESTING

This wishlist was generated on 14/08/2019, and contains the following Products:

23-4200

Proctor/Core Cutter Extruder Frame and Hydraulic Jack. Extrudes 100mm/4 Inch Diameter Specimens

23-6191/01

Bench-Mounting Mixer 5 Litre Capacity Complete with Bowl Beater and Whisk. 220-240V 50Hz 1Ph.

24-2830

Gas Jar 75mm Dia X 300mm with Glass Cover and Rubber Bung.

24-2885

Pyknometer Complete with Non-Corrodable Cone and Rubber Seal 1 kg Capacity

34-0130

Tamping Rod 16mm Dia X 600mm long hemispherical at both ends.

34-2800

Bulk Density Measure 30 Litre

34-2820

Bulk Density Measure 15 Litre

42-0410

Flakiness Gauge.

42-0820

Length Gauge

42-1700

Sand Absorption Cone

42-1720

Tamping Rod

42-1995

Bulk Density Measure 3 Litre.

42-2000

Bulk Density Measure 7 Litre

42-4000

Aggregate Impact Value Apparatus Complete with 16mm Dia X 600mm Long Rod

42-4300

150mm Aggregate Crushing Value Apparatus. Supplied Complete with Metal Measure and Tamping Rod.

42-5300/10

Set of 12 Abrasive Charges (ASTM).

42-5315/01

Los Angeles Abrasion Apparatus

45-3803

Filter Discs Pack of 100

45-3810/01

Rotatest 1500

45-5580/01

Isomantle Electric Heater

45-6310

Compaction Mould

45-6462

Paper Discs

45-6550/01

30 L Heating Bath with Led Display Cover

45-6600/01

AutoComp 100-A

45-6810/01

Marshall Test 50

45-6850

Breaking Head (Marshall)

45-6880

Flow Meter BS/EN

46-3310/01

Cleveland Flash Cup Apparatus

78-0860

50kN Clamped Boss Load Ring

78-5485/01

Electronic Balance - 22000 g x 0.1 g

79-0260

200mm Dia BS Sieve 1.70mm Stainless Steel Mesh.

81-0140

Spatula 200 mm

81-0220

Aluminium Scoop Large

81-0508

Heat-Resistent Gloves, With Gauntlet

81-4020

Sample Tray - 306 x 306 x 38 mm

82-5247

Portable Thermometer 100 ml



Proctor/Core Cutter Extruder Frame and Hydraulic Jack. Extrudes 100mm/4 Inch Diameter Specimens

Code: 23-4200

Product Group: [Soil Extruders, Accessories for manual and automatic compaction](#)

Adaptor plates will be supplied; extrudes samples from BS Compaction Mould, Proctor Mould 100 mm, Core Cutter and Marshall Mould. Maximum extrusion force 20kn.

Standards

BS 1377-1

Further Information

****NOT AVAILABLE FOR SALE IN THE USA****



Bench-Mounting Mixer 5 Litre Capacity Complete with Bowl Beater and Whisk. 220-240V 50Hz 1Ph.

Code: [23-6191/01](#)

Product Group: [Sample Mixers](#), [Mixing](#), [Sample Mixers](#)

The mixer has two electrically switched mixing speeds which obviates the need to switch off during speed selection. The mixing head comprises a beater which contra-rotates about a central shaft using planetary gearing. A lever-acting lifting device facilitates the insertion and removal of the bowl. This mixer is suitable for the mixing of soil samples, mortar, bituminous mixtures and associated materials where comparatively small samples are being prepared. Supplied with stainless steel bowl, beater and whisk.

Standards

BS 598-107, BS 1377-1, BS 1924-1, EN 12697-35

Further Information

****NOT AVAILABLE FOR SALE IN THE USA****

Specification

Dimensions	545 x 380 x 550 mm
Beater Speeds (rpm) low, intermediate, high	136, 281, 580
Central shaft speeds (rpm) low, high	60, 124, 255
Rated power	500 W
Weight	24 kg



Gas Jar 75mm Dia X 300mm with Glass Cover and Rubber Bung.

Code: [24-2830](#)

Product Group: [Gas Jar Method](#)

1 litre capacity complete with rubber bung and glass cover.

Standards

BS 1377, EN 1997-2



Pyknometer Complete with Non-Corrodable Cone and Rubber Seal 1 kg Capacity

Code: [24-2885](#)

Product Group: [Particle Density: Pyknometer
Methods, Pycnometer Top and Jar](#)

Glass jar complete with non-corrodable cone.

Standards

ASTM C128, AASHTO T84



Tamping Rod 16mm Dia X 600mm long hemispherical at both ends.

Code: [34-0130](#)

Product Group: [Precision Air Entrainment Meter, Slump Test, Accessories for Concrete Moulds](#)

Steel, 600 mm long x 16 mm dia, hemispherical at both ends.

Please note this item is not graduated.

Further Information

****NOT AVAILABLE FOR SALE IN THE USA****



Bulk Density Measure 30 Litre

Code: [34-2800](#)

Product Group: [Bulk Density Measures, Fresh Concrete](#) - [Bulk Density Measures](#)

Manufactured from heavy gauge steel these bulk density measures comply with the requirements of either BS 812 or ASTM C-29. Other than the 3 litre size, all measures incorporate carrying handles as standard.

Complies to: ASTM C138, ASTM C29, BS 812, EN 1097-3, EN 12350-6

Standards

BS 812, EN 1097-3, EN 12350-6, ASTM C138

Further Information

****NOT AVAILABLE FOR SALE IN THE USA****

For other bulk density measures see the aggregates section



Bulk Density Measure 15 Litre

Code: [34-2820](#)

Product Group: [Bulk Density Measures, Fresh Concrete](#) - [Bulk Density Measures](#)

Manufactured from heavy gauge steel these bulk density measures comply with the requirements of either BS 812 or ASTM C-29. Other than the 3 litre size, all measures incorporate carrying handles as standard.

Complies to ASTM C138, ASTM C29, BS 812, EN 1097-3, EN 12350-6

Further Information

****NOT AVAILABLE FOR SALE IN THE USA****

For other bulk density measures see the aggregates section



Flakiness Gauge.

Code: [42-0410](#)

Product Group: [Flakiness Sieves and Gauges](#)

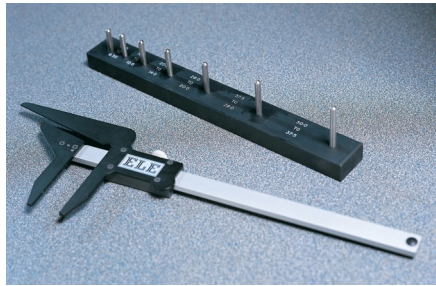
Constructed of heavy gauge sheet steel to the dimensions specified in BS 812.

Standards

BS 812

Further Information

****NOT AVAILABLE FOR SALE IN THE USA****



Length Gauge

Code: [42-0820](#)

Product Group: [Elongation Index](#)

Manufactured to the dimensions specified in BS 182.

Standards

BS 812-105

Further Information

****NOT AVAILABLE FOR SALE IN THE USA****



Sand Absorption Cone

Code: 42-1700

Product Group: Particle Density (specific gravity) and Water Absorption for Fine Aggregates, Sand Absorption Cone and Tamper

Made of brass to the dimensions given in BS 812, ASTM C128 and AASHTO T84.

Standards

BS 812, ASTM C128, AASHTO T84



Tamping Rod

Code: 42-1720

Product Group: Particle Density (specific gravity) and Water Absorption for Fine Aggregates, Sand Absorption Cone and Tamper

For use with cone. Tamping face is 25mm diameter and complies with BS 812, ASTM C128 and AASHTO T84.

Standards

BS 812, ASTM C128, AASHTO T84



Bulk Density Measure 3 Litre.

Code: [42-1995](#)

Product Group: [Bulk Density Measures](#)

3 litre capacity

Standards

BS 812, ASTM C29

Further Information

****NOT AVAILABLE FOR SALE IN THE USA****



Bulk Density Measure 7 Litre

Code: [42-2000](#)

Product Group: [Bulk Density Measures](#)

Manufactured from heavy gauge steel these bulk density measures comply with the requirements of either BS 812, EN 1097-3, 12350-6 or ASTM C138. All measures incorporate carrying handles as standard. The measures are coated against corrosion.

Standards

BS 812

Further Information

****NOT AVAILABLE FOR SALE IN THE USA****



Aggregate Impact Value Apparatus Complete with 16mm Dia X 600mm Long Rod

Code: [42-4000](#)

Product Group: [Aggregate Impact Value \(AIV\)](#),
[Aggregate Impact Value \(AIV\)](#)

Heavy duty construction, heavily plated assembly
ensures corrosion resistance.

Standards

BS 812-112

Further Information

****NOT AVAILABLE FOR SALE IN THE USA****



150mm Aggregate Crushing Value Apparatus. Supplied Complete with Metal Measure and Tamping Rod.

Code: 42-4300

Product Group: [Aggregate Crushing Value \(ACV\) and Ten Percent Fines Value \(TFV\)](#)

Comprising of 150 mm nominal diameter steel cylinder, plunger and base plate supplied complete with metal measure and tamping rod.

Standards

BS 812-112

Further Information

****NOT AVAILABLE FOR SALE IN THE USA****



Set of 12 Abrasive Charges (ASTM).

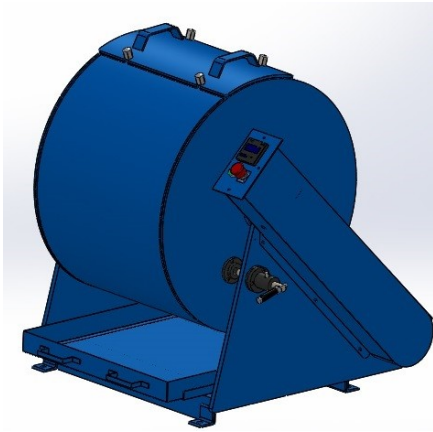
Code: [42-5300/10](#)

Product Group: [Los Angeles Abrasion Machine](#), [Los Angeles Abrasion Machine](#)

ASTM Set of 12.

Standards

EN 1097-2, ASTM C131, ASTM C535, AASHTO T96



Los Angeles Abrasion Apparatus

Code: [42-5315/01](#)

Product Group: [N/A](#)

The Los Angeles Abrasion comprises a heavy steel cylinder, rotated about its horizontal axis. The cylinder incorporates a removal internal shelf. Two alternative shelf positions are provided, one for ASTM and one for the EN test method. The Los Angeles Abrasion Machine's heavy duty steel cylinder is manufactured from structural steel plate. The filling aperture is provided with a cover. The machine is fitted with a digital revolution counter and steel tray for specimen unloading. It is also supplied with one set of abrasive charges as standard.

Applicable standards:

- ASTM C 131
- C535
- EN 1097-2
- AASHTO T96

Optional accessories: Abrasive charge, consisting of a set of 12 hardened steel balls of 48 mm dia.

Available in 220 V, 50Hz and 220 V, 60Hz.



Filter Discs Pack of 100

Code: [45-3803](#)

Product Group: [Asphalt Centrifuge Extractors](#)

Outer dia: 248 mm

Hole dia: 44 mm

Capacity: 1500 g

Qty per pack: 100

Equivalent grade to Whatman No.182

Standards

EN 12697-1, ASTM D2172, AASHTO T164

Further Information

****NOT AVAILABLE FOR SALE IN THE USA****



Rotatest 1500

Code: 45-3810/01

Product Group: Asphalt Centrifuge Extractors

Centrifuge extractor used to determine the quantitative amount of bitumen in bituminous paving mixtures. Variable speed control from 0 to 3600 rpm through the front panel mounted control knob and brake control included for rapid deceleration.

Precision machined aluminium removable cover with integral cup for adding solvent, with sealed cast aluminium housing. Centrifuge extractor used to determine the quantitative amount of bitumen in bituminous paving mixtures. Variable speed control from 0 to 3600 rpm through the front panel mounted control knob and brake control included for rapid deceleration.

Precision machined aluminium removable cover with integral cup for adding solvent, with sealed cast aluminium housing.

Standards

EN 12697-1, ASTM D2172, AASHTO T164

Further Information

****NOT AVAILABLE FOR SALE IN THE USA****

1500 g capacity. Supplied with 100 Filter Discs. For 220 V AC, 50 - 60 Hz, 1ph.



Isomantle Electric Heater

Code: [45-5580/01](#)

Product Group: [Sample Mixers](#), [Mixing](#), [Sample Mixers](#)

For use with 23-6191 Bench Mounting Mixer.

Standards

EN 12697-35

Further Information

****NOT AVAILABLE FOR SALE IN THE USA****



Compaction Mould

Code: 45-6310

Product Group: Accessories for manual and automatic compaction, Asphalt Compaction Mould

Comprising of mould body, baseplate and combined filling/extraction collar.

Standards

EN 12697-30, ASTM D6926, AASHTO T245

Specification

Construction	Machined seamless steel forming mold; base and collar.
Finish	Plated for rust resistance.
Dimensions	4" (101.6 mm) i.d. x 3" (76.2 mm) internal h. with base.
Weight	Net 6 lbs. (2.7 kg).



Paper Discs

Code: [45-6462](#)

Product Group: [Accessories for manual and automatic compaction, Filter Paper Discs](#)

Non-absorbent, 99 mm diameter, pack of 100.

Standards

EN 12697-30

Specification

Weight

Net 2.9 oz. (82 g).



30 L Heating Bath with Led Display Cover

Code: [45-6550/01](#)

Product Group: [Accessories for manual and automatic compaction](#)

Water Bath with LED display, cover and internal perforated shelf. Temperature range ambient to 60°C \pm 5°C.

Standards

BS 2000-49, EN 1426, EN 13179-2, ASTM D5, AASHTO T49, IP 49

Further Information

****NOT AVAILABLE FOR SALE IN THE USA****



AutoComp 100-A

Code: 45-6600/01

Product Group: Automatic Compaction

Fully automatic, simple to operate
Built-in safety features
Uniform compaction
Automatic blow counter

Complies to BS 598-107

This ruggedly constructed automatic compactor provides a consistent and even degree of compaction. The unit incorporates a compaction pedestal comprising a laminated hardwood block secured to a concrete base by a 300 mm square x 25 mm thick steel plate. The mechanism lifts the 4535 g hammer and automatically releases it at the specified height of 457 mm. The conveniently positioned control fascia panel comprises of a mains light, start and stop buttons and a direct-reading counter used to set the required number of blows.

During operation the AutoComp 100-A automatically counts down to zero. Dual rammer pick-ups have been incorporated, reducing stress on the machine's internal mechanism. Particular attention has been paid to operator safety by the inclusion of various in-built safety features.

Standards

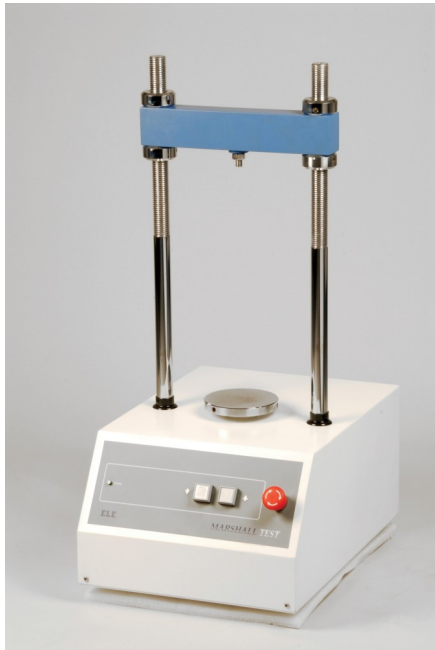
EN 12697-10, EN 12697-30, BS 598

Further Information

NOT AVAILABLE FOR SALE IN THE USA

Specification

Dimensions (l x w x h)	535 x 535 x 1880 mm
Compaction foot diameter	98.52 mm
Sliding weight	4535 g
Height of drop	457 mm
Weight	278 kg



Marshall Test 50

Code: [45-6810/01](#)

Product Group: [Marshall Load Frames](#)

- Geared screwjack and motor drive
- Precise speed
- Internal limit switch for both directions of travel
- Easy to use controls

This bench-mounting mechanical load frame is ruggedly constructed to encompass the strain and loads involved with the test. The unit is compact in size and can be quickly installed on a bench top, requiring only a power point. It has been designed for simple operation, is easy to clean and requires minimum maintenance.

Standards

EN 12697-34

Further Information

****NOT AVAILABLE FOR SALE IN THE USA****

Load frame, 50 kN capacity. Supplied without Breaking Head. For 220 - 240 V AC, 50 Hz, 1 ph.



Breaking Head (Marshall)

Code: [45-6850](#)

Product Group: [Accessories for the Marshall test](#)

Complete with gauge disc. Supplied without flow meter.

Standards

EN 12697-34



Flow Meter BS/EN

Code: [45-6880](#)

Product Group: [Accessories for the Marshall test](#)

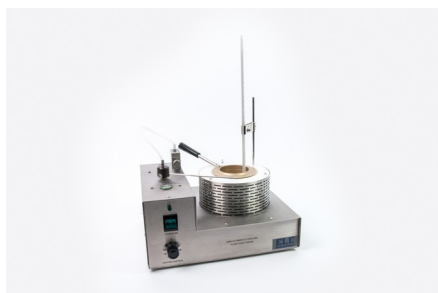
Dial gauge graduated 0.01 mm with 25 mm travel.
Supplied with stem brake unit and flow meter pedestal.

Standards

EN 12697-34

Further Information

****NOT AVAILABLE FOR SALE IN THE USA****



Cleveland Flash Cup Apparatus

Code: [46-3310/01](#)

Product Group: [Cleveland Flash Cup Apparatus](#)

The ELE Semi-Automatic Cleveland Open Cup flashpoint Tester is equipped with an electrically heated cup (with a variable control to set temperature rise rate), a button operated and electrically driven sweep arm and a test flame for use on natural gas. Bench mounted, the unit is incorporated in an easy to clean stainless steel case.

Standards

BS 2000-36, EN ISO 2592, ASTM D92, IP 36

Further Information

****NOT AVAILABLE FOR SALE IN THE USA****

For 220 - 240 V AC, 50 - 60 Hz, 1 ph.

Specification

Temperature Range	Ambient to 400°C
Power	500 W maximum
Ramp rate	Variable, manually controlled
Voltage	220/240 V, 50/60 Hz
Size (HxWxD)	33 x 31 x 29 cm
Weight	6.5 kg



50kN Clamped Boss Load Ring

Code: 78-0860

Product Group: Clamped Boss Load Rings, Digital Tritest 50 Load Frame, Load Measurement, Proving Rings, Accessories for the Marshall test, Accessories for the Marshall Test, CBR-Test 50 Machine, Load Measurement, CBR Loading Press, Hand-Operated, Force measurement

Calibrated in compression.

Standards

EN 12697-34

Specification

Capacity - kN	50
Capacity - kgf	5000
Capacity - lbf	11,200
Typical Design Sensitivity - kN/div	45.5
Typical Design Sensitivity - Kg/div	4.54
Typical Design Sensitivity - lbf/div	10.18
Overall Height	9.76" (248 mm)
Approx Weight	6.35 kg



Electronic Balance - 22000 g x 0.1 g

Code: [78-5485/01](#)

Product Group: [Electronic Balances](#)

Further Information

****Not available for sale in the USA****

Specification

Capacity resolution	22000 g x 0.1 g
Pan size	400 x 300 mm
Mains and battery	Yes
Dimensions (w x d x h)	450 x 515 x 195 mm
Weight	7.6 kg
Weighing units	g, kg, ct, GN, N, lb, oz, lb:oz.



200mm Dia BS Sieve 1.70mm Stainless Steel Mesh.

Code: [79-0260](#)

Product Group: [200mm Diameter BS Sieves](#), [200mm Diameter BS Sieves](#), [200mm Diameter BS Sieves](#)

Standards

BS 410-1, ISO 3310, EN933-2, ISO 565

Further Information

****NOT AVAILABLE FOR SALE IN THE USA****



Spatula 200 mm

Code: [81-0140](#)

Product Group: [Determination of Plastic Limit, Spatulas](#)

Further Information

****NOT AVAILABLE FOR SALE IN THE USA****



Aluminium Scoop Large

Code: [81-0220](#)

Product Group: [Slump Test, Scoops and Shovels](#)

Further Information

****Not available for sale in the USA****



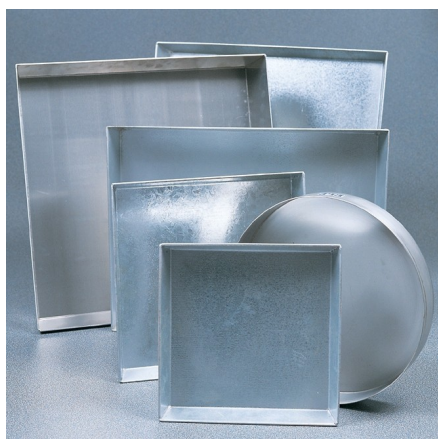
Heat-Resistant Gloves, With Gauntlet

Code: [81-0508](#)

Product Group: [Miscellaneous Laboratory Hardware](#)

Further Information

****NOT AVAILABLE FOR SALE IN THE USA****



Sample Tray - 306 x 306 x 38 mm

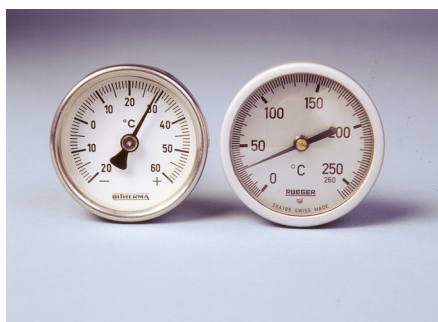
Code: [81-4020](#)

Product Group: [Sample Trays](#)

Complies to ASTM C128, AASHTO T84

Further Information

****NOT AVAILABLE FOR SALE IN THE USA****



Portable Thermometer 100 ml

Code: [82-5247](#)

Product Group: [Portable Dial-type Thermometers](#)

50 mm diameter dial with a 180 mm long stem.

Further Information

****NOT AVAILABLE FOR SALE IN THE USA****