



IF IT'S WORTH BUILDING, IT'S WORTH TESTING

Contents

www.ele.com
+44 (0) 01525 249 200



This wishlist was generated on 20/11/2019, and contains the following Products:

24-9010

Straight Edge 300mm.

38-2015/01

Automatic Vicat Apparatus

38-2015/12

Needle Cleaning Device

38-2015/14

Printer Paper Rolls

38-2300

EN Vicat Mould

38-2660

ASTM Vicat Mould

38-3900/01

Autoclave

39-1100

Three-gang Mould

39-1100/10

Glass Plate

39-1120

Feeding Hopper

39-1130

Scraper

39-1150/01

Jolting Table 220 - 240 V 50 Hz

39-7160/01

ADR Touch Control PRO 250/25 Auto Cement Machine

79-0040

200mm Dia BS Sieve 38 Mic Stainless Steel Mesh.

Contents

www.ele.com
+44 (0) 01525 249 200



79-0050

200mm Dia BS Sieve 45 Mic Stainless Steel Mesh.

79-0070

200mm Dia BS Sieve 63 Mic Stainless Steel Mesh.

79-0090

200mm Dia BS Sieve 90 Mic Stainless Steel Mesh.

79-0125

200mm Dia Iso:565 3310/1 Sieve 160 Mic Stainless Steel Mesh.

79-0190

200mm Dia BS Sieve 500Mic Stainless Steel Mesh.

79-0215

200mm Dia Iso:565 3310/1 Sieve 800 Mic Stainless Steel Mesh.

79-0230

200mm Dia BS Sieve 1.00mm Stainless Steel Mesh.

79-0255

200mm Dia Iso:565 3310/1 Sieve 1.60mm Stainless Steel Mesh.

79-0270

200mm Dia BS Sieve 2.00mm Stainless Steel Mesh.

80-0200/01

ELE Sieve Shaker



Straight Edge 300mm.

Code: [24-9010](#)

Product Group: [BS/EN compaction test 4.5kg, Proctor compaction, Straightedge](#)

300 mm

Standards

BS 1377-4, BS 1924-2, ASTM D698, ASTM D1557, AASHTO T99, EN 13286-2, EN 13286-4, ASTM D1883, AASHTO T193, ASTM D558, ASTM D559, ASTM D560, AASHTO T134, AASHTO T135, AASHTO T136, AASHTO T180

Specification

Construction	Flat ground tool steel; beveled edge.
Dimensions	L x W x T (300mm x 40mm x 6mm).
Weight	550g



Automatic Vicat Apparatus

Code: 38-2015/01

Product Group: Automatic Vicat

Complete with EN and ASTM Initial and Final needles, Consistency Plunger, Windows(R) software and RS232 cable, 1 x EN and ASTM Mould and Glass Plate. Suitable for continuous use in saturated humidity, at a controlled temperature of $20^{\circ}\text{C} \pm 1^{\circ}\text{C}$.

Complies to EN 13279-2 (GYPSUM), EN 480-2, ASTM C187, ASTM C191, DIN 1168, DIN 1196, NF P15-414, NF P15-431, AASHTO T131, EN 196-3

The results are printed on the incorporated printer and this eliminates the manual operations of installing and zeroing the paper graph on the drum. The use of the appliance is extremely simplified by the guiding menu that is available in english, french, spanish, german, italian language.

- Transfer each single control or function of the Vicat on the PC
- Verify in real time each phase of the test being made
- Automatically download the final results at the end of the test on all the connected Vicat
- Process and file at the same time all the tests without obliging the operator to move from his working place.

Additionally the firmware has many other functions detailed in the technical chart that will be transmitted to the user interested to know more about it.

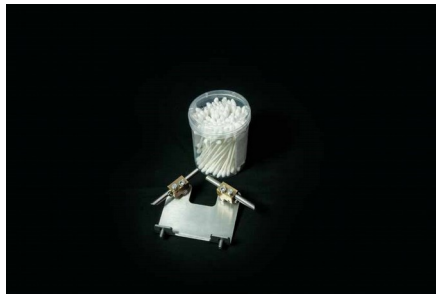
Standards

ASTM C187, ASTM C191

Further Information

****NOT AVAILABLE FOR SALE IN THE USA****

For 220 - 240 V AC, 50 - 60 Hz, 1 ph.



Needle Cleaning Device

Code: [38-2015/12](#)

Product Group: [Automatic Vicat](#)

Accessory.

Standards

ASTM C187, ASTM C191

Further Information

****NOT AVAILABLE FOR SALE IN THE USA****



Printer Paper Rolls

Code: [38-2015/14](#)

Product Group: [Automatic Vicat](#)

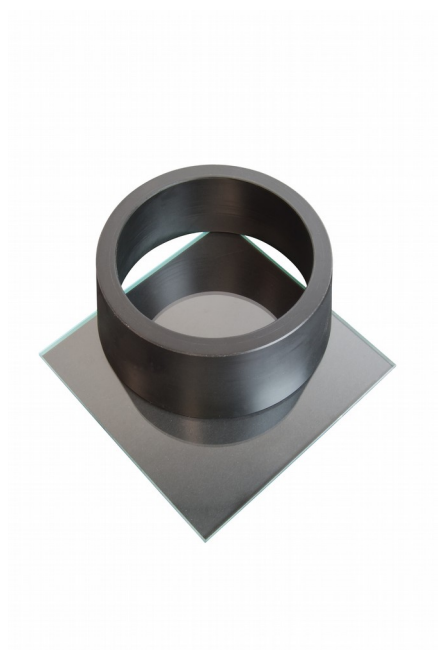
For Automatic Vicat: pack of 10.

Standards

ASTM C187, ASTM C191, EN 196-3, EN 13454-2

Further Information

****NOT AVAILABLE FOR SALE IN THE USA****



EN Vicat Mould

Code: [38-2300](#)

Product Group: [Vicat Method, Automatic Vicat](#)

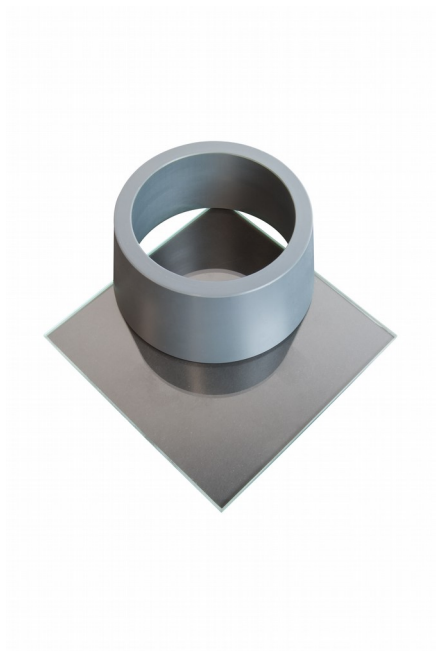
Accessory: manufactured from a hard rubber compound and supplied complete with a glass base plate.

Standards

EN 196-3

Further Information

****NOT AVAILABLE FOR SALE IN THE USA****



ASTM Vicat Mould

Code: [38-2660](#)

Product Group: [Vicat Apparatus](#), [Vicat Method](#),
[Automatic Vicat](#)

Accessory: manufactured from non-absorbent plastic
and supplied complete with a glass base plate.

Standards

ASTM C187, ASTM C191



Autoclave

Code: 38-3900/01

Product Group: Soundness of Portland Cement by the Autoclave Method

Standards: ASTM C188, C141 , C151

The Laboratory Cement Autoclave is suitable for conducting accelerated soundness tests on Cement or the Autoclave expansion test. The equipment consists of a Stainless Steel Pressure Vessel with insulated outer shell, fabricated out of high quality Stainless Steel Sheet. The pressure inside the vessel is controlled through a micro processor based PID controller. The equipment is supplied complete with spring loaded safety valve pressure gauge, PID controller with RTD for control of Heater unit.

Special Features :

- Rust proof stainless steel pressure vessel & enclosure
- Microprocessor based PID controller for accurately controlling the temperature hence pressure
- Three fold safety mechanism for the equipment and the operator
- Reliable silicon rubber lid sealing gasket
- Very Compact

Specifications :

- Working Pressure: 21 ± 1 kg/cm² at 215° C
- Pressure Vessel: ID 150mm X Depth 500
- Weight: 70Kg
- Heater: 2000 Watts
- Size: 480 (W) x 580 (D) x 1100 (H)
- Supply: 220V, 50Hz, 1 phase

Panel mounted PID controller with international safety certifications

The equipment consist of the following replaceable parts :

- Rubber Gasket, Viton
- Pressure Gauge, 0-42 kg/cm²
- Safety Valve
- Digital Temperature Controller

Further Information

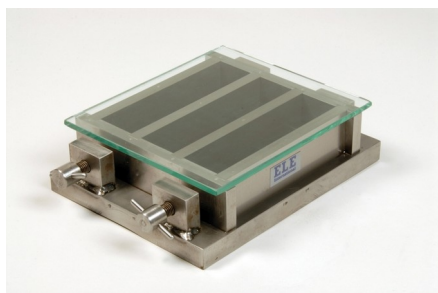
NEW MODEL SUPERSEDING 38-3800/01 - CHECK AVAILABILITY BEFORE PLACING AN ORDER

Product Sheet

www.ele.com
+44 (0) 01525 249 200



****NOT AVAILABLE FOR SALE IN THE USA****



Three-gang Mould

Code: [39-1100](#)

Product Group: [Moulding of Prisms](#)

For 40.1 x 40 x 160 mm mortar prisms. This mould is manufactured to a very high specification. Supplied with glass plate.

Complies to EN 196-1, ISO 679, EN 413-2, EN 459-2, EN 13454-2.

Standards

EN 196-1, EN 413-2, EN 459-2, EN 1015-10, EN 13454-2, ISO 679, BS 3892-1, BS 4551-1

Further Information

****NOT AVAILABLE FOR SALE IN THE USA****



Glass Plate

Code: [39-1100/10](#)

Product Group: [N/A](#)

Spare plate for prism moulds.

Further Information

****NOT AVAILABLE FOR SALE IN THE USA****



Feeding Hopper

Code: [39-1120](#)

Product Group: [Moulding of Prisms](#)

For 39-1100 Mould.

Complies to EN 196-1, ISO 679, EN 413-2, EN 459-2,
EN 13454-2

Further Information

****NOT AVAILABLE FOR SALE IN THE USA****



Scraper

Code: [39-1130](#)

Product Group: [Moulding of Prisms](#)

Double-ended, used for spreading and levelling mortar in mould.

Standards

EN 196-1, EN 413-2, EN 459-2, EN 1744-1, EN 1015-10, EN 13454-2, ISO 679, BS 3892-1, BS 4551-1

Further Information

****NOT AVAILABLE FOR SALE IN THE USA****



Jolting Table 220 - 240 V 50 Hz

Code: [39-1150/01](#)

Product Group: [Jolting Table](#)

This machine consists of a mould table seated on a rotating cam driven at 60 revolutions per minute. The apparatus is supplied with a remote mains switch box, incorporating a push button start/stop control and automatic stop control at end of test.

Supplied without moulds.

Complies to EN 196-1, ISO 679, EN 413-2, EN 459-2, EN 13454-2.

Standards

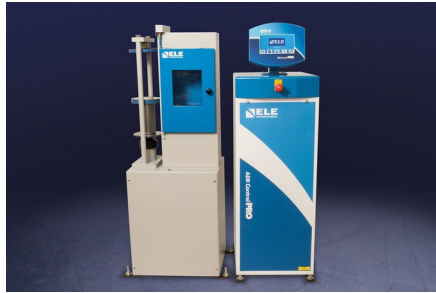
EN 196-1, EN 413-2, EN 459-2, EN 1744-1, EN 1015-10, EN 1015-11, EN 13454-2, ISO 679, BS 3892-1, BS 4551-1

Further Information

****NOT AVAILABLE FOR SALE IN THE USA****

Specification

Motor rating	0.24 kW (1/3 hp)
Cam shaft RPM	60
Table lift	15 +/- 0.3 mm
Overall dimensions with swing bolts raised	(H x W x D) 340 x 400 x 1045 mm
Weight	90 kg



ADR Touch Control PRO 250/25 Auto Cement Machine

Code: 39-7160/01

Product Group: Activity Index, ADR Touch Control Pro 250/25 Auto Cement Machines

- 250 kN maximum capacity
- Calibration accuracy to BS EN ISO 7500-1; ASTM E4
- Automatic loading cycle
- 25 kN low capacity frame supplied as standard
- Tests a wide variety of specimen sizes
- Tests mortar, lime, cement and Fly Ash
- Complete with compression/flexural jigs and platen sets
- Supplied with Windows(R) download software as standard

The ADR Touch Control PRO 250/25 Machine provides consistent automatic testing of a wide range of specimens. The machine comprises a standard ELE 250/25 kN load frame and the new ADR Touch Control PRO console and incorporates all the features included in the ADR Touch Control PRO series concrete testing machines.

As standard the machine is supplied with platens fitted to the load frame, compression jig with 40 mm and 50mm/2 inch square platen sets and flexural jig for testing 40.1 x 40 x 160 mm prisms.

The availability of the 25 kN low capacity load frame as standard extends the test capability of the machine for low strength compression or flexural testing.

Standards

EN 196-1, EN 459-2, EN 1015-11, EN 13454-2, ASTM C109, ISO 679, ASTM E4, EN 196-2

Further Information

****Not available for sale in the USA****

The ADR Touch Control PRO will deliver all the features and quality of the established ADR-Auto range, with its 20 year history, but with a new sleek design and additional capabilities. The console assembly consists of an ADR Touch Control PRO and power base which can be used with all existing concrete and cement frames

USER INTERFACE

The new ADR Touch Control PRO has an improved user interface providing a high quality platform for testing that will enhance the performance of our compression machines. It now has a larger

7-inch colour touch screen with a higher definition display, allowing easier observation of test progress. A favourites option is also available, allowing users to save the most common set-ups for immediate access, without the need for navigating through selection menus.

USER FLEXIBILITY

The ADR Touch Control PRO has a unique flexible head with rotation capabilities of 75-degrees and a 45-degree tilt, improving usability and comfort for individual users. It is available with four languages English, Spanish, Portuguese and French, making it even more user-friendly and accessible to a wider audience. The new LAN connectivity feature lets the operator use the PC based APP (ELE Logger) to download test results away from the test area. User flexibility has also increased with the new ADR Touch Control Pro as it can now be operated remotely, so tests can be initiated away from the test area. Many issues can be resolved quickly by our service team through the new remote diagnostics feature and updating to the latest version of software has never been easier.

COMPATIBILITY

The all new dual sensor capabilities allow users to test both concrete and cement samples on one frame. The ADR Touch Control PRO is compatible with all existing compression frames and upgrade kits are also available. The upgrade kits can be used to convert existing ADR-Auto consoles to the new Automatic Digital Control Readout.

TESTING TIMES

The new generation ADR Compression Machines have an increased control over the pace rate, which allows users to run the pace rate higher than average, but still within standard. This produces an average time saving of 10% for a typical 150mm cube sample.

ELECTRICAL

Reduced component count and no wire design results in increased reliability and serviceability. New low voltage interlocks and e-stop has increased safety. The ADR Touch Control PRO has the latest Arm Core Processor technology which has improved the processing power and speed.



200mm Dia BS Sieve 38 Mic Stainless Steel Mesh.

Code: [79-0040](#)

Product Group: [200mm Diameter BS Sieves](#), [200mm Diameter BS Sieves](#), [200mm Diameter BS Sieves](#)

200mm Diameter 38 Microns Aperture Brass Framed Sieve With Stainless Steel Mesh To BS 410

Further Information

****NOT AVAILABLE FOR SALE IN THE USA****



200mm Dia BS Sieve 45 Mic Stainless Steel Mesh.

Code: [79-0050](#)

Product Group: [200mm Diameter BS Sieves](#), [200mm Diameter BS Sieves](#), [200mm Diameter BS Sieves](#)

Standards

BS 410-1, ISO 3310, ISO 565, EN933-2

Further Information

****NOT AVAILABLE FOR SALE IN THE USA****



200mm Dia BS Sieve 63 Mic Stainless Steel Mesh.

Code: [79-0070](#)

Product Group: [200mm Diameter BS Sieves](#), [200mm Diameter BS Sieves](#), [200mm Diameter BS Sieves](#)

Standards

BS 410-1, ISO 3310, ISO 565, EN933-2

Further Information

****NOT AVAILABLE FOR SALE IN THE USA****



200mm Dia BS Sieve 90 Mic Stainless Steel Mesh.

Code: 79-0090

Product Group: 200mm Diameter BS Sieves, 200mm Diameter BS Sieves, 200mm Diameter BS Sieves

Standards

BS 410-1, ISO 3310, ISO 565, EN933-2

Further Information

NOT AVAILABLE FOR SALE IN THE USA



200mm Dia Iso:565 3310/1 Sieve 160 Mic Stainless Steel Mesh.

Code: [79-0125](#)

Product Group: [200mm Diameter BS Sieves](#), [200mm Diameter BS Sieves](#), [200mm Diameter BS Sieves](#)

Standards

BS 410-1, ISO 3310, ISO 565, EN933-2

Further Information

****NOT AVAILABLE FOR SALE IN THE USA****



200mm Dia BS Sieve 500Mic Stainless Steel Mesh.

Code: [79-0190](#)

Product Group: [200mm Diameter BS Sieves](#), [200mm Diameter BS Sieves](#), [200mm Diameter BS Sieves](#)

Standards

BS 410-1, ISO 3310, EN933-2, ISO 565

Further Information

****NOT AVAILABLE FOR SALE IN THE USA****



200mm Dia Iso:565 3310/1 Sieve 800 Mic Stainless Steel Mesh.

Code: 79-0215

Product Group: 200mm Diameter BS Sieves, 200mm
Diameter BS Sieves, 200mm Diameter BS Sieves

Standards

ISO 565, BS410-1, ISO 3310-1, EN933-2

Further Information

****NOT AVAILABLE FOR SALE IN THE USA****



200mm Dia BS Sieve 1.00mm Stainless Steel Mesh.

Code: 79-0230

Product Group: 200mm Diameter BS Sieves, 200mm Diameter BS Sieves, 200mm Diameter BS Sieves

Standards

BS 410-1, ISO 3310, ISO 565, EN933-2

Further Information

****NOT AVAILABLE FOR SALE IN THE USA****



200mm Dia Iso:565 3310/1 Sieve 1.60mm Stainless Steel Mesh.

Code: 79-0255

Product Group: 200mm Diameter BS Sieves, 200mm Diameter BS Sieves, 200mm Diameter BS Sieves

Standards

BS 410-1, ISO 3310, EN933-2, ISO 565

Further Information

****NOT AVAILABLE FOR SALE IN THE USA****



200mm Dia BS Sieve 2.00mm Stainless Steel Mesh.

Code: 79-0270

Product Group: 200mm Diameter BS Sieves, 200mm Diameter BS Sieves, 200mm Diameter BS Sieves

Standards

BS 410-1, ISO 3310, EN933-2, ISO 565

Further Information

****NOT AVAILABLE FOR SALE IN THE USA****



ELE Sieve Shaker

Code: [80-0200/01](#)

Product Group: [ELE Sieve Shaker](#)

The ELE sieve shaker is powered by an electromagnetic drive that has no rotating parts to wear making it maintenance free and extremely quiet in operation.

The unit features a triple Vertical-Lateral-Rotary vibrating action that moves the sample over the sieve producing faster more efficient sieving, while the rapid vertical movements also help keep the apertures from blinding.

The shaker is ideal for laboratory or on site use. It is robust, compact and sufficiently lightweight to be portable. The separate digital microprocessor controlled console unit incorporates a keypad for setting the sieving program and is isolated from any effects of vibration from the shaker.

As standard the shaker includes, timer 0-999 minutes, adjustable vibration intensity and adjustable intermittent or continuous operation.

Further Information

****NOT AVAILABLE FOR SALE IN THE USA****

The unit accepts up to ten 200 mm or 8 inch, full height, diameter sieves and lid and receiver, or up to six 300 mm or 12 inch diameter sieves and lid and receiver. Complete as specified. Dimensions (l x w x h) 380 x 440 x 1085 mm. For 220 - 240 V AC, 50 Hz 1ph.