



IF IT'S WORTH BUILDING, IT'S WORTH TESTING

Contents

www.ele.com
+44 (0) 01525 249 200



This wishlist was generated on 05/12/2019, and contains the following Products:

25-0402

Consolidation Frame One Dimensional Consolidation Incremental Loading Device.

25-0408

Set of Weights 100Kg Total Weight.

25-0429

Floor Mounting Stand.

25-0440

Dial Gauge 10mm Travel X 0.002mm Divisions.

25-0467

75mm Stainless Steel Consolidation Cell



Consolidation Frame One Dimensional Consolidation Incremental Loading Device.

Code: 25-0402

Product Group: Consolidation Apparatus, Table Top Consolidation Apparatus

- High capacity - 8800 kPa on 50 mm diameter specimens using 11:1 beam ratio
- Triple beam ratio, 9:1, 10:1, 11:1
- Compact unit ensures maximum space saving

The ELE Oedometer is rigidly constructed to ensure minimum frame distortion. The frame is designed to load the specimen through a yoke assembly and one of three alternative beam ratios. The beam is fitted with a counterbalance weight and beam support jack. The cell platform will accept the complete range of ELE consolidation cells and is fitted with a central spigot to ensure accurate centring of the cell under the loading yoke. Dimensions without hanger 711 x 203 x 508 mm (l x w x h). Weight 24 kg.

PLEASE NOTE: 25-0402 does not come with a mounting stand, cell or a transducer

Standards

ASTM D2435, ASTM D4546, AASHTO T216, ASTM D3877, BS 1377-5

Further Information

Supplied without dial gauge and weights.

Specification

Load Capacity	48 tons/sq. ft. (5,14 8 kPa) on 2.5" (63 mm) diam. samples.
Loading Beam	Cast aluminum; counterbalanced; 9:1,10:1 and 11 :1 ratios.
Frame	Cast aluminum; integral beam support jack; plated steel and platform.
Dimensions	203 x 711 x 508 mm, (8" w. x 28" d. x 20" h) . excluding weight hanger.
Weight	24 KG



Set of Weights 100Kg Total Weight.

Code: [25-0408](#)

Product Group: [Consolidation Apparatus](#)

9 x 10 kg, 1 x 5 kg, 2 x 2 kg, 1 x 1 kg.

Standards

ASTM D2435, ASTM D4546, AASHTO T216, ASTM D3877, BS 1377-5



Floor Mounting Stand.

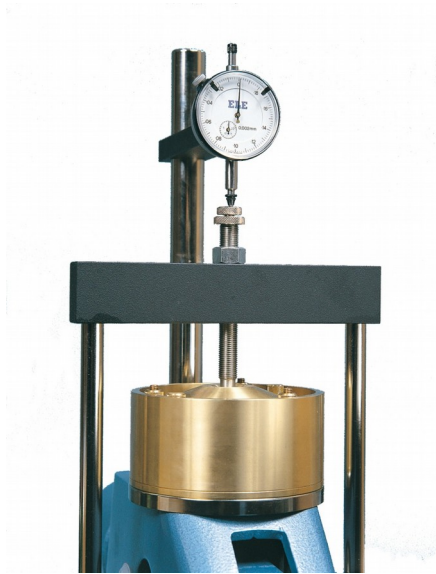
Code: [25-0429](#)

Product Group: [Consolidation Apparatus, Table Top Consolidation Apparatus](#)

A versatile modular steel stand. Holes in the shelf are provided for securing up to three EL25-0402 Consolidation Frames. Dimensions 610 x 915 x 865 mm (l x w x h).

Standards

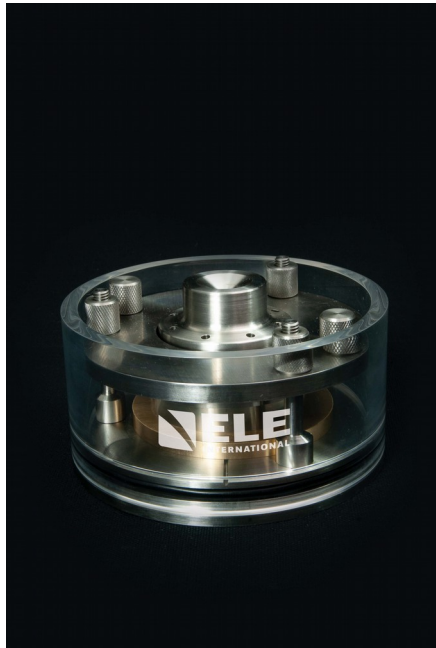
ASTM D2435, ASTM D4546, AASHTO T216, ASTM D3877, BS 1377-5



Dial Gauge 10mm Travel X 0.002mm Divisions.

Code: [25-0440](#)

Product Group: [Measurement of Horizontal and Vertical Movement](#), [Vertical settlement measurement](#), [Direct/Residual Shear Apparatus](#)



75mm Stainless Steel Consolidation Cell

Code: [25-0467](#)

Product Group: [Stainless Steel Consolidation Cells](#),
[Stainless Steel Consolidation Cells](#)

- Stainless Steel Construction
- Long lasting
- Includes upper, lower porous discs and cutting ring
- Complies to ISO 17892-5 and BS 1377-5