



IF IT'S WORTH BUILDING, IT'S WORTH TESTING

This wishlist was generated on 05/12/2019, and contains the following Products:

25-0402

Consolidation Frame One Dimensional Consolidation Incremental Loading Device.

25-0408

Set of Weights 100Kg Total Weight.

25-0429

Floor Mounting Stand.

25-0467

75mm Stainless Steel Consolidation Cell

27-1500/01

GDU 8 Channel Data Acquisition Unit 220-240 V 50/60 Hz, 1 Ph.

27-1649

Consolidation Transducer Assembly 15mm Travel Fitted with 5 Pin Din Plug.

27-1770

DS7.1 One-Dimensional Consolidation Software



Consolidation Frame One Dimensional Consolidation Incremental Loading Device.

Code: 25-0402

Product Group: Consolidation Apparatus, Table Top Consolidation Apparatus

- High capacity - 8800 kPa on 50 mm diameter specimens using 11:1 beam ratio
- Triple beam ratio, 9:1, 10:1, 11:1
- Compact unit ensures maximum space saving

The ELE Oedometer is rigidly constructed to ensure minimum frame distortion. The frame is designed to load the specimen through a yoke assembly and one of three alternative beam ratios. The beam is fitted with a counterbalance weight and beam support jack. The cell platform will accept the complete range of ELE consolidation cells and is fitted with a central spigot to ensure accurate centring of the cell under the loading yoke. Dimensions without hanger 711 x 203 x 508 mm (l x w x h). Weight 24 kg.

PLEASE NOTE: 25-0402 does not come with a mounting stand, cell or a transducer

Standards

ASTM D2435, ASTM D4546, AASHTO T216, ASTM D3877, BS 1377-5

Further Information

Supplied without dial gauge and weights.

Specification

Load Capacity	48 tons/sq. ft. (5,14 8 kPa) on 2.5" (63 mm) diam. samples.
Loading Beam	Cast aluminum; counterbalanced; 9:1,10:1 and 11 :1 ratios.
Frame	Cast aluminum; integral beam support jack; plated steel and platform.
Dimensions	203 x 711 x 508 mm, (8" w. x 28" d. x 20" h) . excluding weight hanger.
Weight	24 KG



Set of Weights 100Kg Total Weight.

Code: [25-0408](#)

Product Group: [Consolidation Apparatus](#)

9 x 10 kg, 1 x 5 kg, 2 x 2 kg, 1 x 1 kg.

Standards

ASTM D2435, ASTM D4546, AASHTO T216, ASTM D3877, BS 1377-5



Floor Mounting Stand.

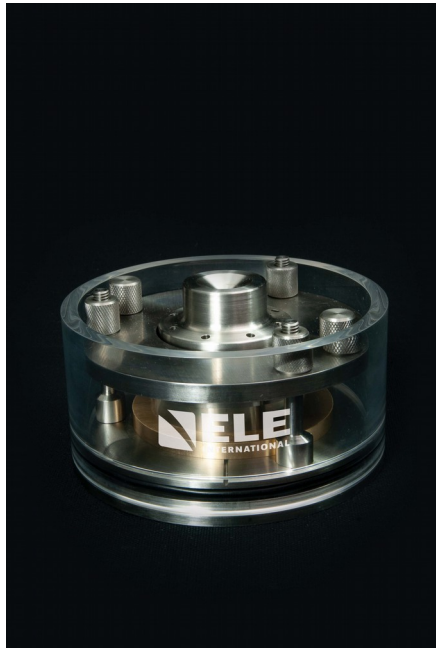
Code: [25-0429](#)

Product Group: [Consolidation Apparatus](#), [Table Top Consolidation Apparatus](#)

A versatile modular steel stand. Holes in the shelf are provided for securing up to three EL25-0402 Consolidation Frames. Dimensions 610 x 915 x 865 mm (l x w x h).

Standards

ASTM D2435, ASTM D4546, AASHTO T216, ASTM D3877, BS 1377-5



75mm Stainless Steel Consolidation Cell

Code: [25-0467](#)

Product Group: [Stainless Steel Consolidation Cells](#),
[Stainless Steel Consolidation Cells](#)

- Stainless Steel Construction
- Long lasting
- Includes upper, lower porous discs and cutting ring
- Complies to ISO 17892-5 and BS 1377-5



GDU 8 Channel Data Acquisition Unit 220-240 V 50/60 Hz, 1 Ph.

Code: 27-1500/01

Product Group: Data Logging with the GDU, Geotechnical Data Acquisition Unit (GDU), Automatic Data Acquisition - Triaxial, Automatic Data Acquisition - Consolidation, Automatic Data Acquisition - Direct Shear, Automatic Data Acquisition - CBR

The GDU is a stand-alone, multi-tasking, multi-channel data logger, that is reliable and powerful, enabling it to co-ordinate test data from the range of ELE transducers required for various test methods.

The ELE Geotechnical Software package (DS7.1 and following), in conjunction with the GDU and a range of transducers, are the two central components required to create a modern turnkey soil testing system. Being fully modular it can be adapted to a wide range of soil testing laboratory configurations.

- For performing CBR, Consolidation, Direct/Residual Shear and Total & Effective Stress Triaxial tests
- 8 Channels expandable to 32 for performing multiple, concurrent tests for cost savings
- Independent signal conditioning on each channel to maintain data accuracy
- Field-upgradeable software, meaning no downtime for future software and functionality upgrades
- PC link via RS232 (DS7.1 only), or RS232 and Ethernet P2P/LAN (with DS7.2 and following)
- Extended warranty

Specification

Case	Aluminum, free standing; houses power supply, analog to digital conversion module and an 8-channel analog input module with transducer energization.
Sockets	Standard 5-pin DIN type.
Input Range	± 5 volts to ± 10 mV full scale.
Transducer Supply	10vDC.
Dimensions	12.8" w. x 14.3" d. x 6.1" h. (325 x 363 x 155 mm).
Weight	Net 14.08 lbs. (6.4 kg).



Consolidation Transducer Assembly 15mm Travel Fitted with 5 Pin Din Plug.

Code: [27-1649](#)

Product Group: [Displacement Measurement](#),
[Displacement Transducers](#), [Vertical settlement measurement](#)

Fitted with 5 pin DIN plug.

Supplied with Calibration Certificate.

Specification

Construction	Fully encapsulated electronics, sealed in a stainless steel case
Excitation	11 V DC
Connector	5-pin DIN type
Mounting bracket	Included as standard
Weight kg	0.45



DS7.1 One-Dimensional Consolidation Software

Code: [27-1770](#)

Product Group: [Automatic Data Acquisition - Consolidation](#)

Standards

ASTM D2435, ASTM D4546, AASHTO T216, BS 1377, EN 1997-2