



IF IT'S WORTH BUILDING, IT'S WORTH TESTING

This wishlist was generated on 05/12/2019, and contains the following Products:

---

25-0402

**Consolidation Frame One Dimensional Consolidation Incremental Loading Device.**

---

25-0429

**Floor Mounting Stand.**

---

25-0467

**75mm Stainless Steel Consolidation Cell**

---

27-1500/01

**GDU 8 Channel Data Acquisition Unit 220-240 V 50/60 Hz, 1 Ph.**

---

27-1505

**8-Channel Expansion Analog Input Module**

---

27-1649

**Consolidation Transducer Assembly 15mm Travel Fitted with 5 Pin Din Plug.**

---

27-1770

**DS7.1 One-Dimensional Consolidation Software**

---



## Consolidation Frame One Dimensional Consolidation Incremental Loading Device.

Code: 25-0402

Product Group: Consolidation Apparatus, Table Top Consolidation Apparatus

- High capacity - 8800 kPa on 50 mm diameter specimens using 11:1 beam ratio
- Triple beam ratio, 9:1, 10:1, 11:1
- Compact unit ensures maximum space saving

The ELE Oedometer is rigidly constructed to ensure minimum frame distortion. The frame is designed to load the specimen through a yoke assembly and one of three alternative beam ratios. The beam is fitted with a counterbalance weight and beam support jack. The cell platform will accept the complete range of ELE consolidation cells and is fitted with a central spigot to ensure accurate centring of the cell under the loading yoke. Dimensions without hanger 711 x 203 x 508 mm (l x w x h). Weight 24 kg.

PLEASE NOTE: 25-0402 does not come with a mounting stand, cell or a transducer

## Standards

ASTM D2435, ASTM D4546, AASHTO T216, ASTM D3877, BS 1377-5

## Further Information

Supplied without dial gauge and weights.

## Specification

Load Capacity	48 tons/sq. ft. (5,14 8 kPa) on 2.5" (63 mm) diam. samples.
Loading Beam	Cast aluminum; counterbalanced; 9:1,10:1 and 11 :1 ratios.
Frame	Cast aluminum; integral beam support jack; plated steel and platform.
Dimensions	203 x 711 x 508 mm, (8" w. x 28" d. x 20" h) . excluding weight hanger.
Weight	24 KG

## Accessories



## 16 Ton Weight Set

Code: [25-0544](#)



## 2.416" Fixed Ring Consolidometer

Code: [25-0480](#)



## 2.5" Floating Ring Consolidometer

Code: [25-0530](#)



## Consolidation Cell Complete 2.5 Inch Diameter Sample. Inc. Porous Discs and Cutting Ring.

Code: [25-0479](#)



## Consolidation Cell Complete 50mm Diameter Sample.

Code: [25-0455](#)



## Consolidation Cell/ Oedometer Complete 75mm Diameter Sample

Code: [25-0503](#)



## Floor Mounting Stand.

Code: [25-0429](#)

---



## Mechanical Dial Indicator - 0.4" Range

Code: [88-4070](#)

---



## Mechanical Dial Indicator - 1.0" Range Counter Clockwise Movement

Code: [88-4120](#)

---



## Mechanical Dial Indicator - 10 mm Range

Code: [88-4080](#)

---



## Mechanical Dial Indicator - 25 mm Range Counter Clockwise Movement

Code: [88-4130](#)

---



## Set of Weights 100Kg Total Weight.

Code: [25-0408](#)

---





## Weight Set A

Code: [25-0535](#)



## Weight Set B

Code: [25-0537](#)

## Spares/Consumables



## Electronic Digital Indicator, 0.600"/15 mm range

Code: [88-4210](#)

## Alternatives



## Pneumatic Consolidation Apparatus

Code: [25-0560](#)



## Floor Mounting Stand.

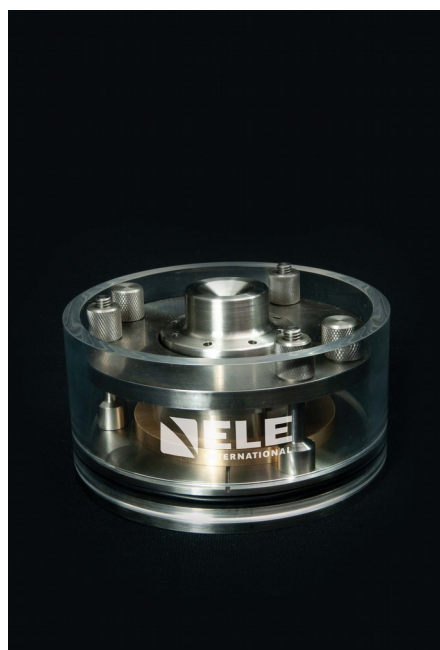
Code: [25-0429](#)

Product Group: [Consolidation Apparatus, Table Top Consolidation Apparatus](#)

A versatile modular steel stand. Holes in the shelf are provided for securing up to three EL25-0402 Consolidation Frames. Dimensions 610 x 915 x 865 mm (l x w x h).

## Standards

ASTM D2435, ASTM D4546, AASHTO T216, ASTM D3877, BS 1377-5



## 75mm Stainless Steel Consolidation Cell

Code: [25-0467](#)

Product Group: [Stainless Steel Consolidation Cells](#),  
[Stainless Steel Consolidation Cells](#)

- Stainless Steel Construction
- Long lasting
- Includes upper, lower porous discs and cutting ring
- Complies to ISO 17892-5 and BS 1377-5

## Spares/Consumables



### Cutting ring for 75mm cell

Code: [25-0467/12](#)



### Lower porous disc for 0469 Series Cells

Code: [25-0469/11](#)





## GDU 8 Channel Data Acquisition Unit 220-240 V 50/60 Hz, 1 Ph.

Code: 27-1500/01

Product Group: Data Logging with the GDU, Geotechnical Data Acquisition Unit (GDU), Automatic Data Acquisition - Triaxial, Automatic Data Acquisition - Consolidation, Automatic Data Acquisition - Direct Shear, Automatic Data Acquisition - CBR

The GDU is a stand-alone, multi-tasking, multi-channel data logger, that is reliable and powerful, enabling it to co-ordinate test data from the range of ELE transducers required for various test methods.

The ELE Geotechnical Software package (DS7.1 and following), in conjunction with the GDU and a range of transducers, are the two central components required to create a modern turnkey soil testing system. Being fully modular it can be adapted to a wide range of soil testing laboratory configurations.

- For performing CBR, Consolidation, Direct/Residual Shear and Total & Effective Stress Triaxial tests
- 8 Channels expandable to 32 for performing multiple, concurrent tests for cost savings
- Independent signal conditioning on each channel to maintain data accuracy
- Field-upgradeable software, meaning no downtime for future software and functionality upgrades
- PC link via RS232 (DS7.1 only), or RS232 and Ethernet P2P/LAN (with DS7.2 and following)
- Extended warranty

## Specification

Case	Aluminum, free standing; houses power supply, analog to digital conversion module and an 8-channel analog input module with transducer energization.
Sockets	Standard 5-pin DIN type.
Input Range	$\pm 5$ volts to $\pm 10$ mV full scale.
Transducer Supply	10vDC.
Dimensions	12.8" w. x 14.3" d. x 6.1" h. (325 x 363 x 155 mm).
Weight	Net 14.08 lbs. (6.4 kg).

## Accessories



## 8-Channel Expansion Analog Input Module

Code: [27-1505](#)



## USB to Serial Adapter

Code: [27-1701](#)

## Alternatives



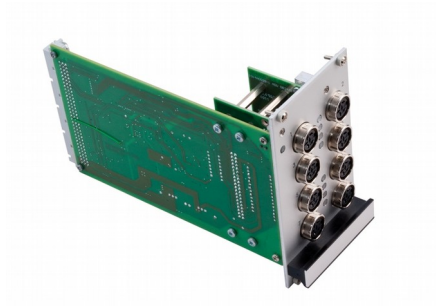
## GDU 8 Channel Data Acquisition Unit 100-120 V 60 Hz

Code: [27-1500/02](#)



## RS232/USB Cable, GDU

Code: [27-1510](#)



## 8-Channel Expansion Analog Input Module

Code: [27-1505](#)

Product Group: [Geotechnical Data Acquisition Unit \(GDU\)](#)



## Consolidation Transducer Assembly 15mm Travel Fitted with 5 Pin Din Plug.

Code: [27-1649](#)

Product Group: [Displacement Measurement](#),  
[Displacement Transducers](#), [Vertical settlement measurement](#)

Fitted with 5 pin DIN plug.

Supplied with Calibration Certificate.

## Specification

Construction	Fully encapsulated electronics, sealed in a stainless steel case
Excitation	11 V DC
Connector	5-pin DIN type
Mounting bracket	Included as standard
Weight kg	0.45

## Accessories



## Axial Strain Transducer Assembly 50mm Travel Fitted with 5 Pin Din Plug.

Code: [27-1617](#)



## Horizontal Displacement Transducer Assembly 15mm Travel 5 Pin Din Plug Mounting Pillar

Code: [27-1697](#)



## Vertical Displacement Transducer Assembly 15mm Travel with 5 Pin Din Plug Bracket for Shear Box

Code: [27-1689](#)

---

### Spares/Consumables

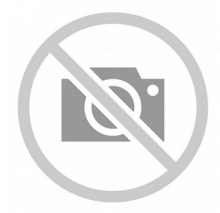


## CBR Displacement Transducer

Code: [27-1706](#)

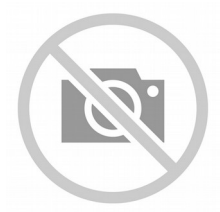
---

### Alternatives



## Transducer Extension Cable 3.0 m

Code: [27-1717](#)



## Transducer Extension Cable 4.5 m

Code: [27-1719](#)



## DS7.1 One-Dimensional Consolidation Software

Code: [27-1770](#)

Product Group: [Automatic Data Acquisition - Consolidation](#)

### Standards

ASTM D2435, ASTM D4546, AASHTO T216, BS 1377, EN 1997-2