



IF IT'S WORTH BUILDING, IT'S WORTH TESTING

This wishlist was generated on 24/01/2020, and contains the following Products:

23-3000

Riffle Box 7mm Slot Width Complete with Three Containers.

23-3070

Riffle Box 15mm Slot Width Complete with Three Containers.

23-3100

Riffle Box 19mm Slot Width Complete with Three Containers.

23-3150

Riffle Box 25mm Slot Width Complete with Three Containers.

23-3170

Riffle Box 30mm Slot Width Complete with Three Containers.

23-3200

Riffle Box 38mm Slot Width Complete with Three Containers.

23-3300

Riffle Box 50mm Slot Width Complete with Three Containers.

23-3350

Riffle Box 64mm Slot Width Complete with Three Containers.

24-0410

Liquid Limit Device BS with Counter. C/W Metal Grooving Tool & Test Gauge.

24-0417/01

Motorised Liquid Limit Device W/ Counter BS 220-240V 50Hz 1Ph.

24-0425

Grooving Tool and Gauge B.S.

24-0430

Glass Plate.

24-0545/01

Semi-Automatic Cone Penetrometer

24-0548

Penetration Test Cup.

24-1500

Prong Plate.

24-1800

Shrinkage Mould to BS 1377

24-4125/01

High Speed Stirrer Complete with Paddle Cup & Baffle. 220-240V 50/60Hz 1Ph.

24-4145

Sodium Hexametaphosphate 500G.

24-4640

Soil Hydrometer Type 152H ASTM/Aashto Graduated -5 to + 60G/Litre.

24-4650

Soil Hydrometer Type 151H ASTM D422 Graduated 0.995 to 1.038 Specific Gravity.

24-4700

Hydrometer Sedimentation Cylinder

24-4865/01

Constant Temperature Bath 5 to 99.9 Deg.C X 0.1 Deg.C with Led Display and False Base Support.

24-8080/01

Automatic Soil Compactor BS CE Compliant

24-9000

BS Standard Compaction Mould 1000Cm Capacity.

24-9002

Standard Compaction Rammer 2.5kg BS1377

24-9004

BS Compaction Rammer 4.5Kg Wt.

24-9150/01

Cbr-Test 50 Machine 50kN Capacity BS and ASTM Supplied with Stabilising Bar.

24-9182

Penetration Piston

24-9183

Cbr Penetration Piston (Adjustable).

24-9186

Penetration Dial Gauge BS

24-9188

Bracket and Adaptor. Dual Purpose Mounting Bracket for CBR Penetration Gauges EL24-9184/EL24-9186

24-9198

BS Cbr Mould Body.

24-9200

BS Extension Collar

24-9202

BS Perforated Base Plate.

24-9204

BS Solid Base or Top Plate

24-9206

Cbr Cutting Collar with Area Ratio of 21.9% to Fit BS Moulds.

24-9208

C-Spanner for BS Cbr Mould. Two Required.

24-9210

Base Plate Tool for BS Mould

24-9212

Static Compaction Plug.

24-9214

2Kg Annular Surcharge Weight

24-9216

2Kg Split Surcharge Weight.

24-9220

Filter Papers 150mm Dia Equivalent to Whatman No 1. Box of 100.

24-9290

45kN (10000Lb) Capacity Mechanical Jack.

24-9298

Land Rover Bracket to Attach EL29-200 Jack. for Land Rovers Models 90 & 110 From 1983 Onwards.

24-9300

Ball Seating for EL 24-9290 45 kN Jack

24-9308

Set of Extension Rods Complete

24-9312

Datum Bar Assembly.

24-9320

10Lb (4.5Kg) Annular Surcharge Weight.

24-9322

10Lb (4.5Kg) Slotted Surcharge Weight.

25-0380

Expansion Index Test Apparatus

25-0402

Consolidation Frame One Dimensional Consolidation Incremental Loading Device.

25-0408

Set of Weights 100Kg Total Weight.

25-0455

Consolidation Cell Complete 50mm Diameter Sample.

25-0455/13

50mm Dia Upper and Lower Porous Stones for Use on EL25-0455 Series Cell.

25-0461

Calibration Disc 50mm Cell

25-0503

Consolidation Cell/ Oedometer Complete 75mm Diameter Sample

25-0506

Cutting Ring 75mm Cell.

25-0609

Standpipe Panel.

26-2114/01

Digital Direct/Residual Shear Apparatus Complete with Lever Loading Assembly. 220-240V 50/60Hz 1Ph.

26-2132

Set of Weights 50 kg Slotted.

26-2197

Shear Box Assembly 100mm Sq.

26-2197/10

Porous Plate 100mm Sq.

26-2201

Specimen Cutter 100mmsq.

26-2205

Specimen Extrusion Tool 100 mm sq

27-1300/01

DSU Electronic Readout and Control System 220 - 240 V AC 50/60 Hz

27-1561

S-Type Load Cell 5 kN.for Use with Direct/ Residual Shear Machine. Fitted with 5 Pin Din Plug.

27-1649

Consolidation Transducer Assembly 15mm Travel Fitted with 5 Pin Din Plug.

27-1689

Vertical Displacement Transducer Assembly 15mm Travel with 5 Pin Din Plug Bracket for Shear Box

27-1697

Horizontal Displacement Transducer Assembly 15mm Travel 5 Pin Din Plug Mounting Pillar

27-1773

DS7.2 One-Dimensional Consolidation Program for Windows 7, 32/64 bit

27-1793

DS7.2 Direct and Residual Shear Strength Program for Windows 7, 32/64 bit

2810E

Plastic Limit Set

2820E

Shrinkage Limit Set

29-3800

Plate Bearing Apparatus Complete. 500kN Capacity

29-5300

Core Cutter 100mm Id By 130mm Long.

29-5320

Driving Dolly for EL 29-5300

29-5340

Driving Rammer for EL 29-5320

34-0192

Slump Test Set BS & ASTM. C/W Slump Cone Base Plate Steel Rule Tamping Rod & Funnel.

34-2800

Bulk Density Measure 30 Litre

34-2830

Bulk Density Measure 10 Litre

34-2910

Compacting Bar 25mm Sq X 380mm

34-3540/01

Concrete Mixer 56/40 Litre Capacity.

34-6250/01

Vibrating Table 600 X 400mm Table Top. 220-240V 50Hz 1Ph. Supplied with clamping assembly

34-6431/01

Vibrating Poker 25mm Dia Tip 290mm Long. 220-240V 50/60Hz 1Ph.

34-8100/09

Buoyancy Balance 16 kg X 0.1 G

35-1480

Standard Concrete Test Hammer

35-1530

Testing Anvil

35-2302/09

Ultrasonic Concrete Tester 110-240V 50/60Hz 1Ph

35-2304/09

Advanced Cover Meter

36-1415/01

Universal Testing Machine, automatic, 500 kN tension / 1000 kN compression

38-1000

Blaine Air Permeability Apparatus

38-1000/15

Blaine Air Permeability Cell

38-1200

Le Chatelier Flask

38-2110

EN Initial and Final Set Needle

38-2620

ASTM Initial Set Needle

38-2660

ASTM Vicat Mould

38-4010

Vicat Frame Complete.

42-1005

Wire Basket Brass with Handle Nominal 6000Cm³ Capacity with 1.7mm Wire Mesh.

42-5300/10

Set of 12 Abrasive Charges (ASTM).

42-5305/10

Set of 12 Abrasive Charges EN)

42-5315/01

**Los Angeles Abrasion Machine Meets ASTM and European Standards.
220-240V 50Hz 1Ph.**

500-175

Electronic digital theodolite

500-196

**Total Station with EDM, Tribach, Li-Ion Battery, Charger, Flat Prism, Reflector
Pole and Carry Case**

77-0115

Digital Point-Load Test Apparatus

77-0115/10

Set of Cones for Digital Point Load Tester

77-0115/14

Point holder/locator for Digital Point Load tester

77-0115/K

**Set of 2 Conical Points & 1 Set of Internal Seals for 77-0115 Digital Point Load
Tester.**

78-0760

Clamped Boss Load Ring - 28.0 kN

78-1250/01

225 Litre Drying Oven

79-5020

8in Dia ASTM Sieve 4.75mm Stainless Steel Mesh.

79-5070

8in Dia ASTM Sieve 2.0mm Stainless Steel Mesh.

79-5120

8in Dia ASTM Sieve 850 Mic Stainless Steel Mesh.

79-5160

8in Dia ASTM Sieve 425 Mic Stainless Steel Mesh.

79-5190

8in Dia ASTM Sieve 250 Mic Stainless Steel Mesh.

79-5240

8in Dia ASTM Sieve 106 Mic Stainless Steel Mesh.

79-5260

8in Dia ASTM Sieve 75 Mic Stainless Steel Mesh.

79-5400

8 Inch Dia Lid.

79-5410

8in Dia Receiver.

79-5510

8in Dia ASTM Sieve 9.50mm Stainless Steel Mesh.

79-5560

8in Dia ASTM Sieve 19.0mm Stainless Steel Mesh.

79-5610

8in Dia ASTM Sieve 37.5mm Stainless Steel Mesh.

79-5630

8in Dia ASTM Sieve 50.0mm Stainless Steel Mesh.

79-5660

8in Dia ASTM Sieve 75.0mm Stainless Steel Mesh.

79-7200

Sieve Brush Brass and Nylon

80-0200/01

ELE Sieve Shaker

81-0588

Vernier Caliper Range 0 to 200mm X 0.02mm.

81-0705

Wire Brush

81-4160

Sample Tray - 910 x 910 x 76 mm

82-0200

Beaker - 600 ml

82-0500

Measuring Cylinder - Glass 1000 ml

82-3510

Hydrometer

88-4340

Digital Stopwatch



Riffle Box 7mm Slot Width Complete with Three Containers.

Code: 23-3000

Product Group: Riffle Boxes (Sample Dividers)

Manufactured from heavy-gauge sheet metal. BS recommended maximum particle size of 4.5 mm. EN recommended maximum particle size of 3.5 mm. Includes 12 slots each with a 7 mm slot width and an overall approximate capacity of 0.3 litres.

Standards

BS 1377, BS 1924, BS 812, EN 932-1

Specification

Recommended max particle size BS	4.5
Recommended max particle size EN	3.5
Slot width mm	7
No. of slots	12
Approx. capacity kg	0.3
Weight kg	1.5



Riffle Box 15mm Slot Width Complete with Three Containers.

Code: [23-3070](#)

Product Group: [Riffle Boxes \(Sample Dividers\)](#)

Manufactured from heavy-gauge sheet metal. BS recommended maximum particle size of 10 mm. EN recommended maximum particle size of 7.5 mm. Includes 12 slots each with a 15 mm slot width and an overall approximate capacity of 2 litres.

Standards

BS 1377, BS 1924, BS 812, EN 932-1

Specification

Recommended max particle size BS	10
Recommended max particle size EN	7.5
Slot width mm	15
No. of slots	12
Approx. capacity kg	2
Weight kg	8



Riffle Box 19mm Slot Width Complete with Three Containers.

Code: [23-3100](#)

Product Group: [Riffle Boxes \(Sample Dividers\)](#)

Manufactured from heavy-gauge sheet metal. BS recommended maximum particle size of 12.5 mm. EN recommended maximum particle size of 9.5 mm. Includes 10 slots each with a 19 mm slot width and an overall approximate capacity of 4 litres.

Standards

BS 1377, BS 1924, BS 812, EN 932-1

Specification

Recommended max particle size BS	12.5
Recommended max particle size EN	9.5
Slot width mm	19
No. of slots	10
Approx. capacity kg	4
Weight kg	9



Riffle Box 25mm Slot Width Complete with Three Containers.

Code: [23-3150](#)

Product Group: [Riffle Boxes \(Sample Dividers\)](#)

Manufactured from heavy-gauge sheet metal. BS recommended maximum particle size of 16.5 mm. EN recommended maximum particle size of 12.5 mm. Includes 10 slots each with a 25 mm slot width and an overall approximate capacity of 4 litres.

Standards

BS 1377, BS 1924, BS 812, EN 932-1

Specification

Recommended max particle size BS	16.5
Recommended max particle size EN	12.5
Slot width mm	25
No. of slots	10
Approx. capacity kg	4
Weight kg	11.5



Riffle Box 30mm Slot Width Complete with Three Containers.

Code: [23-3170](#)

Product Group: [Riffle Boxes \(Sample Dividers\)](#)

Manufactured from heavy-gauge sheet metal. BS recommended maximum particle size of 20 mm. EN recommended maximum particle size of 15 mm. Includes 10 slots each with a 30 mm slot width and an overall approximate capacity of 4 litres.

Standards

BS 1377, BS 1924, BS 812, EN 932-1

Specification

Recommended max particle size BS	20
Recommended max particle size EN	15
Slot width mm	30
No. of slots	10
Approx. capacity kg	4
Weight kg	17.5



Riffle Box 38mm Slot Width Complete with Three Containers.

Code: 23-3200

Product Group: [Riffle Boxes \(Sample Dividers\)](#)

Manufactured from heavy-gauge sheet metal. BS recommended maximum particle size of 25 mm. EN recommended maximum particle size of 19 mm. Includes 8 slots each with a 38 mm slot width and an overall approximate capacity of 11 litres.

Standards

BS 1377, BS 1924, BS 812, EN 932-1

Specification

Recommended max particle size BS	25
Recommended max particle size EN	19
Slot width mm	38
No. of slots	8
Approx. capacity kg	11
Weight kg	17.5



Riffle Box 50mm Slot Width Complete with Three Containers.

Code: 23-3300

Product Group: [Riffle Boxes \(Sample Dividers\)](#)

Manufactured from heavy-gauge sheet metal. BS recommended maximum particle size of 33 mm. EN recommended maximum particle size of 25 mm. Includes 8 slots each with a 50 mm slot width and an overall approximate capacity of 14 litres.

Standards

BS 1377, BS 1924, BS 812, EN 932-1

Specification

Recommended max particle size BS	33
Recommended max particle size EN	25
Slot width mm	50
No. of slots	8
Approx. capacity kg	14
Weight kg	22.5



Riffle Box 64mm Slot Width Complete with Three Containers.

Code: 23-3350

Product Group: [Riffle Boxes \(Sample Dividers\)](#)

Manufactured from heavy-gauge sheet metal. BS recommended maximum particle size of 42.5 mm. EN recommended maximum particle size of 32 mm. Includes 8 slots each with a 64 mm slot width and an overall approximate capacity of 18 litres.

Standards

BS 1377, BS 1924, BS 812, EN 932-1

Specification

Recommended max particle size BS	42.5
Recommended max particle size EN	32
Slot width mm	64
No. of slots	8
Approx. capacity kg	18
Weight kg	27



Liquid Limit Device BS with Counter. C/W Metal Grooving Tool & Test Gauge.

Code: [24-0410](#)

Product Group: [Casagrande Method](#)

With revolution counter. Complete with metal grooving tool and test gauge.

Standards

BS 1377-2



Motorised Liquid Limit Device W/ Counter BS 220-240V 50Hz 1Ph.

Code: [24-0417/01](#)

Product Group: [Casagrande Method](#)

Complete with revolution counter and motor.

Standards

BS 1377-2



Grooving Tool and Gauge B.S.

Code: [24-0425](#)

Product Group: [Casagrande Method](#)

Constructed to British Standards.

Standards

BS 1377-2



Glass Plate.

Code: [24-0430](#)

Product Group: [Casagrande Method, Determination of Plastic Limit](#)

500 mm square x 10 mm thick.

Standards

BS 1377-2



Semi-Automatic Cone Penetrometer

Code: 24-0545/01

Product Group: Semi-Automatic Cone Penetrometer,
Semi-Automatic Cone Penetrometer

Bench mounted apparatus to determine the liquid limit of soils to BS1377. This method is applicable to a wide range of soils. The apparatus is fitted with a 150mm diameter dial indicator for direct reading of penetration. Supplied complete with 30 deg, 30mm long test cone. Manufactured from stainless steel and includes adjustable levelling feet.

Incorporates digital automatic controller, which releases the plunger head and ensures free falling of the penetration device during the test. The time set is displayed by a bright easy to read display.

Standards

BS 1377, BS 1924-2, EN 1997-2

Specification

Dial Indicator	150 mm diameter graduated in 400 x 0.1 mm divisions. Indicator incorporates a friction/gear system.
Height	Adjustable using rapid integral clamping mechanism.
Cone Release	Semi-Automatic
Cone	1 x 30°, 35 mm test cone included.
Base	Cast aluminum with adjustable leveling feet.
Weight	Net 19 lbs. (8.64 kg).



Penetration Test Cup.

Code: [24-0548](#)

Product Group: [Cone Penetrometer Method](#), [Cone Penetrometer](#)

Brass construction, 55mm dia x 40mm depth to fit BS1377

Standards

BS 1377-2



Prong Plate.

Code: [24-1500](#)

Product Group: [Volumetric Shrinkage](#), [Shrinkage](#)
[Prong Plate](#)

Made of acrylic plastic fitted with three prongs,
nominal 76 mm square and 2.4 mm thick.

Standards

BS 1377, ASTM D427, AASHTO T92

Specification

Construction	Acrylic plastic with 3 metal prongs.
Dimensions	3" square x 1/8" thick (76 x 3.2 mm).
Weight	Net 1 oz. (28 g).



Shrinkage Mould to BS 1377

Code: [24-1800](#)

Product Group: [Linear Shrinkage](#)

To produce a specimen 140 mm long x 12.5 mm radius.

Standards

BS 1377



High Speed Stirrer Complete with Paddle Cup & Baffle. 220-240V 50/60Hz 1Ph.

Code: [24-4125/01](#)

Product Group: [Mechanical Analysis Stirrer](#)

Compact bench top stirrer used for dispersing soil samples in water. Supplied complete with mixing paddle and dispersion cup with baffle. Beaker position maintained by column retainer.

Standards

BS 1377, ASTM D422, AASHTO T88



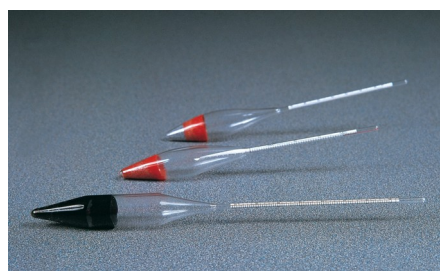
Sodium Hexametaphosphate 500G.

Code: [24-4145](#)

Product Group: [Sodium Hexametaphosphate,](#)
[Mechanical Analysis Stirrer](#)

Standards

ASTM D422, AASHTO T88, ASTM E100



Soil Hydrometer Type 152H ASTM/Aashto Graduated -5 to + 60G/Litre.

Code: [24-4640](#)

Product Group: [ASTM Soil Hydrometers, Soil Hydrometers](#)

Graduated -5 to +60 g/litre.

Standards

BS 1377, EN 1997-2, ASTM D422, ASTM E100, AASHTO T88

Specification

Construction	Molded, seamless.
Scale	Bouyoucos; double scale.
Calibration	At 68°F.
Weight	Net 4 oz. (113 g).



Soil Hydrometer Type 151H ASTM D422 Graduated 0.995 to 1.038 Specific Gravity.

Code: [24-4650](#)

Product Group: [ASTM Soil Hydrometers, Soil Hydrometers](#)

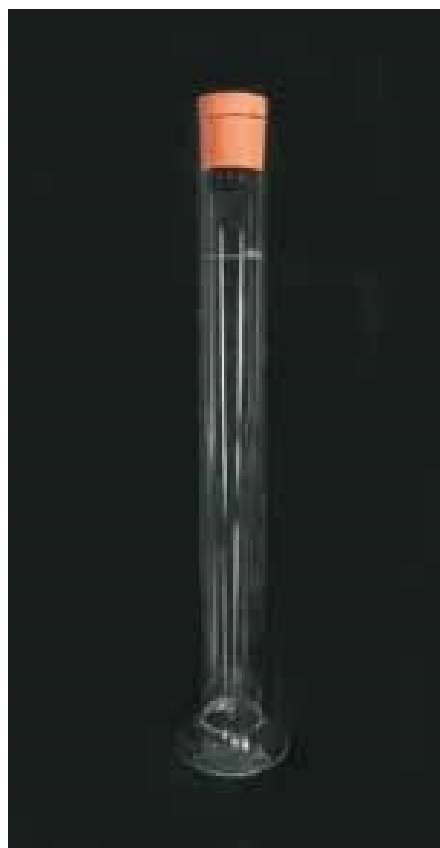
Graduated 0.995 to 1.038 g/ml.

Standards

ASTM D422, ASTM E100, AASHTO T88

Specification

Construction	Molded, seamless.
Scale	Bouyoucos; double scale.
Calibration	At 68°F.
Weight	Net 4 oz. (113 g).



Hydrometer Sedimentation Cylinder

Code: [24-4700](#)

Product Group: [Hydrometer Sedimentation Cylinder](#),
[Hydrometer Jar](#)

Glass, 1000 ml capacity complete with rubber bung.

Standards

BS 1337, ASTM D422, AASHTO T88

Further Information

1000ML Glass



Constant Temperature Bath 5 to 99.9 Deg.C X 0.1 Deg.C with Led Display and False Base Support.

Code: [24-4865/01](#)

Product Group: [Constant Temperature Bath](#)

- Specially designed for Sedimentation of Testing of Soils
- Stainless steel construction with toughened glass front for viewing samples
- Must hold six sedimentation cylinders
- Complies to: BS 1377-2 EN DD ENV1997-2 ASTM D422 AASHTO T88

Further Information

Specially designed for the sedimentation testing of soils and other fine grained material, the bath is supplied with a false bottom to assist in circulation of the bath liquid. Will accommodate six Sedimentation Cylinders.

Specification

Dimensions (l x w x h)	535 x 210 x 610 mm external
Capacity	Holds up to 6 sedimentation cylinders
Construction	Stainless steel with toughened glass front
Temperature Control	Heater/thermostat/circulation with digital controller unit 5 to 99.9 Deg.C X 0.1 Deg.C
Power	1500 watts
Weight kg	12



Automatic Soil Compactor BS CE Compliant

Code: 24-8080/01

Product Group: BS CE Automatic Compactors, Automatic Soil Compactor

- With NEW CE Compliant guarding as an extra safety measure for users
- Complies to BS 1377-4, BS 1924-2, EN 13286-2, EN 13286-47 standards
- Automatic re-setting of counter after completion of blow pattern

The time and effort required to prepare specimens for compaction studies and other test methods can often be costly and time-consuming. The use of an automatic, mechanical compactor will show considerable cost benefits over hand compaction methods.

These machines automatically compact specimens eliminating the laborious hand compaction method. The height and weight of the rammer are adjustable to suit test requirements.

An automatic blow pattern ensures optimum compaction for each layer of soil in compliance with the standards. The rammer travels across the mould and the table rotates the mould in equal steps on a base that is extremely stable. The number of blows per layer can be set at the beginning of the test.

Preset blow pattern ensures an even compaction, includes solid state controls for reliability and maintenance. An automatic digital counter resets to zero on the completion of a test. The selectable rammer has a drop height of 300-450mm, a selectable rammer weight of 2.5 or 4.5kg. A preset number of blows per layer can be set by thumb wheel control. A compaction rate of approximately 26 blows per minute. Accepts BS Standard Compaction and CBR moulds; also meets the requirements of BS 1377-4, BS 1924-2, EN 13286-2, EN 13286-47.

Specification

Standards
Rammer BS/EN

BS 1377-4, BS 1924-2, EN 13286-2, EN 13286-47
Circular faced, 50 mm dia,
selectable to 2.5 kg or 4.5 kg
weight

Drop BS/EN
Weight (kg)

Adjustable to 300 mm or 450 mm
165



BS Standard Compaction Mould 1000Cm Capacity.

Code: [24-9000](#)

Product Group: [BS/EN compaction test 2.5kg](#),
[Accessories for BS compaction and CBR](#)

Plated steel standard compaction mould to BS 1377, comprising of a collar mould body and base plate with quick release wing nuts for easy dismantling.

Standards

BS 1377-4, BS 1924-2

Specification

Mould volume	1 litre
Dimensions	105 mm dia x 115.4 mm high
Construction	All steel, threaded studs with wing nuts, plated.
Weight	5.5 kg



Standard Compaction Rammer 2.5kg BS1377

Code: [24-9002](#)

Product Group: [BS/EN compaction test 2.5kg](#)

50mm diameter with 300mm drop, manufactured from corrosion protected steel.

Standards

BS 1377-4, BS 1924-2

Specification

Rammer	50 mm dia, 2.5 kg
Drop	300 mm
Guide Sleeve	Machined steel tubing with air pressure release holes
Finish	Corrosion resistant
Weight kg	4.2



BS Compaction Rammer 4.5Kg Wt.

Code: [24-9004](#)

Product Group: [BS/EN compaction test 4.5kg, Straightedge](#)

50mm diameter with 450mm drop, manufactured from corrosion protected steel.

Standards

BS 1377-4, BS 1924-2

Specification

Rammer	50 mm dia, 4.5 kg
Drop	450 mm
Guide Sleeve	Machined steel tubing with air pressure release holes
Finish	Corrosion resistant
Weight kg	7.5



Cbr-Test 50 Machine 50kN Capacity BS and ASTM Supplied with Stabilising Bar.

Code: [24-9150/01](#)

Product Group: [CBR Load Frames](#)

- Single speed machine (BS/EN and ASTM)
- Rapid platen adjustment
- Complete with stabilising bar
- Compact, bench-mounting design
- Options for mechanical or electronic measurement

Designed for performing laboratory CBR tests to BS 1377, EN13286-47 and ASTM D1883, this bench mounting machine comprises a twin column frame incorporating a motorised drive system. Rapid adjustment of the platen is provided, which enables daylight to be taken up quickly and also close control of application of a seating load.

Standards

BS 1377, BS 1924, EN 13286-47, ASTM D1883, AASHTO T193

Specification

Dimensions (l x w x h)	550 x 400 x 1220 mm
Max vertical clearance	800 mm
Horizontal clearance	255 mm
Platen diameter	133 mm
Platen travel	105 mm
Weight kg	80



Penetration Piston

Code: [24-9182](#)

Product Group: [Penetration Measurement](#)

1.935 mm² (3 in²) area foot of case hardened steel.
Designed to fit all ELE load rings.



Cbr Penetration Piston (Adjustable).

Code: [24-9183](#)

Product Group: [In-situ CBR](#), [Conversion of In-situ to Laboratory CBR](#), [Penetration Measurement](#)

As 24-9182 but with a coarse stem adjustment. This piston is particularly useful for in-situ testing.

Standards

BS 1377, BS 1924



Penetration Dial Gauge BS

Code: [24-9186](#)

Product Group: [In-situ CBR](#), [Conversion of In-situ to Laboratory CBR](#), [Penetration Measurement](#)

Complete with rack extensions and chisel edge anvil. 25 mm travel x 0.01 mm divisions.

Standards

BS 1377, BS 1924



Bracket and Adaptor. Dual Purpose Mounting Bracket for CBR Penetration Gauges EL24-9184/EL24-9186

Code: [24-9188](#)

Product Group: [In-situ CBR](#), [Conversion of In-situ to Laboratory CBR](#), [Penetration Measurement](#)

Dual purpose mounting bracket for CBR penetration dial gauges. Allows gauge to be fixed to penetration piston or load ring.

Standards

BS 1377, BS 1924



BS Cbr Mould Body.

Code: 24-9198

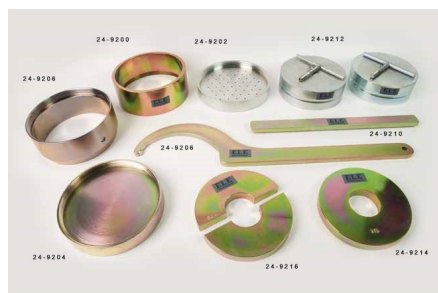
Product Group: BS EN CBR mould, Accessories for
BS compaction and CBR

Standards

ASTM D1883, AASHTO T193

Specification

Mould	152 x 127 mm (inside diameter x height)
Collar	51 mm height, fits both ends of mould
Base plate	Solid, fits both ends of mould
Construction	All steel, plated
Weight kg	7.3



BS Extension Collar

Code: [24-9200](#)

Product Group: [BS EN CBR mould accessories](#),
[Accessories for BS compaction and CBR](#)

Standards

EN 13286-4, BS 1377-4, BS 1924-2



BS Perforated Base Plate.

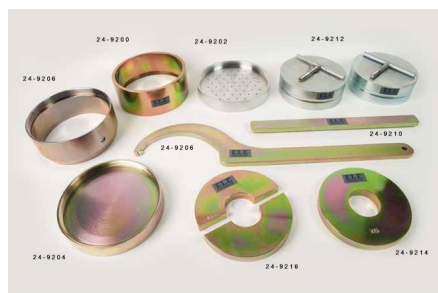
Code: [24-9202](#)

Product Group: [BS EN CBR mould accessories](#)

To fit mould body

Standards

EN 13286-4, BS 1377-4, BS 1924-2



BS Solid Base or Top Plate

Code: [24-9204](#)

Product Group: [BS EN CBR mould accessories](#),
[Accessories for BS compaction and CBR](#)

Standards

EN 13286-4, BS 1377-4, BS 1924-2



Cbr Cutting Collar with Area Ratio of 21.9% to Fit BS Moulds.

Code: [24-9206](#)

Product Group: [BS EN CBR mould accessories](#)

To fit BS/EN mould body.

Standards

EN 13286-4, BS 1377-4, BS 1924-2



C-Spanner for BS Cbr Mould. Two Required.

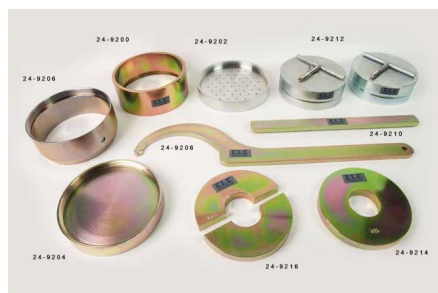
Code: [24-9208](#)

Product Group: [BS EN CBR mould accessories](#)

To fit BS/EN CBR moulds and collars. Two required.

Standards

BS 1377-4, BS 1924-2, EN 13286-4



Base Plate Tool for BS Mould

Code: [24-9210](#)

Product Group: [BS EN CBR mould accessories](#)

To fit into base plate to assist removal from mould body.

Standards

EN 13286-4, BS 1377-4, BS 1924-2



Static Compaction Plug.

Code: [24-9212](#)

Product Group: [BS EN CBR mould accessories](#)

Steel, 150 mm dia x 51 mm thick. Complete with removable handle.

Standards

EN 13286-4, BS 1377-4, BS 1924-2



2Kg Annular Surcharge Weight

Code: [24-9214](#)

Product Group: [BS EN CBR mould accessories](#)

Standards

EN 13286-4, BS 1377-4, BS 1924-2



2Kg Split Surcharge Weight.

Code: [24-9216](#)

Product Group: [BS EN CBR mould accessories](#)

Standards

EN 13286-4, BS 1377-4, BS 1924-2



Filter Papers 150mm Dia Equivalent to Whatman No 1. Box of 100.

Code: [24-9220](#)

Product Group: [BS EN CBR mould accessories](#)

Box of 100.

Standards

EN 13286-4, BS 1377-4, BS 1924-2



45kN (10000Lb) Capacity Mechanical Jack.

Code: [24-9290](#)

Product Group: [In-situ CBR](#), [Conversion of In-situ to Laboratory CBR](#)

The body is corrosion protected and houses an enclosed worm and wheel gear. The gear ratio has been carefully selected to provide a handwheel speed that can be comfortably maintained, particularly with soils of high CBR value. A quick-release device in the screwjack allows the plunger to be rapidly adjusted prior to the test.

Standards

BS 1377, BS 1924



Land Rover Bracket to Attach EL29-200 Jack. for Land Rovers Models 90 & 110 From 1983 Onwards.

Code: [24-9298](#)

Product Group: [In-situ CBR](#)

Fits all models in Land Rover series 90 and 110.

Standards

BS 1377, BS 1924



Ball Seating for EL 24-9290 45 kN Jack

Code: [24-9300](#)

Product Group: [In-situ CBR](#)

For fitting between the mechanical jack and reaction point. The ball seating is used when testing on undulating ground to ensure that the jack, load measuring ring and penetration piston are truly vertical. Non-axial loading of the load ring will give false results and will eventually damage the ring itself.

Standards

BS 1377, BS 1924



Set of Extension Rods Complete

Code: [24-9308](#)

Product Group: [In-situ CBR](#)

Made from high quality steel with large section thread for quick assembly.

Standards

BS 1377, BS 1924



Datum Bar Assembly.

Code: [24-9312](#)

Product Group: [In-situ CBR](#)

Comprising 2 tripod stands and a datum bar.

Standards

BS 1377, BS1924



10Lb (4.5Kg) Annular Surcharge Weight.

Code: [24-9320](#)

Product Group: [In-situ CBR](#)

Standards

BS 1377, BS 1924



10Lb (4.5Kg) Slotted Surcharge Weight.

Code: [24-9322](#)

Product Group: [In-situ CBR](#)

Standards

BS 1377, BS 1924



Expansion Index Test Apparatus

Code: [25-0380](#)

Product Group: [Expansion Index Test Apparatus](#)

- Completely self-contained and compact design.
- Accurate to 0.0001" (0.002 mm).
- Testing time of 24 hours or less on cured soil specimens.

The Expansion Index Test Apparatus is a completely self-contained apparatus designed for use in determining the expansion index of soils. Using the new consolidation apparatus, contractors and laboratory technicians can conduct an expansion test on a cured soil specimen in 24 hours or less.

The apparatus is designed to control all of the variables that influence the expansive characteristics of a particular soil while still performing a practical test for general engineering use.

Standards

ASTM D4829, California UBC 29-2

Specification

Base and Collar	Cast aluminum construction; brass hold-down rods.
Specimen Ring	Stainless steel; 4" i.d. x 1" h. (101.6 x 25 .4 mm).
Porous Stones	4" diam. x 1/2" thick (101.4 x 12 .7 mm).
Loading Weight	Brass; 12 .6 lbs. (5.7 kg).
Dial Indicator	0.3" range x 0.0001" graduations
Test Duration	24 hours or less on cured sample.
Dimensions	6" diam. x 11 " h. (152 x 279 mm).
Weight	Net 18 lbs. (8.2 kg).



Consolidation Frame One Dimensional Consolidation Incremental Loading Device.

Code: 25-0402

Product Group: Consolidation Apparatus, Table Top Consolidation Apparatus

- High capacity - 8800 kPa on 50 mm diameter specimens using 11:1 beam ratio
- Triple beam ratio, 9:1, 10:1, 11:1
- Compact unit ensures maximum space saving

The ELE Oedometer is rigidly constructed to ensure minimum frame distortion. The frame is designed to load the specimen through a yoke assembly and one of three alternative beam ratios. The beam is fitted with a counterbalance weight and beam support jack. The cell platform will accept the complete range of ELE consolidation cells and is fitted with a central spigot to ensure accurate centring of the cell under the loading yoke. Dimensions without hanger 711 x 203 x 508 mm (l x w x h). Weight 24 kg.

PLEASE NOTE: 25-0402 does not come with a mounting stand, cell or a transducer

Standards

ASTM D2435, ASTM D4546, AASHTO T216, ASTM D3877, BS 1377-5

Further Information

Supplied without dial gauge and weights.

Specification

Load Capacity	48 tons/sq. ft. (5,14 8 kPa) on 2.5" (63 mm) diam. samples.
Loading Beam	Cast aluminum; counterbalanced; 9:1,10:1 and 11 :1 ratios.
Frame	Cast aluminum; integral beam support jack; plated steel and platform.
Dimensions	203 x 711 x 508 mm, (8" w. x 28" d. x 20" h) . excluding weight hanger.
Weight	24 KG



Set of Weights 100Kg Total Weight.

Code: [25-0408](#)

Product Group: [Consolidation Apparatus](#)

9 x 10 kg, 1 x 5 kg, 2 x 2 kg, 1 x 1 kg.

Standards

ASTM D2435, ASTM D4546, AASHTO T216, ASTM D3877, BS 1377-5



Consolidation Cell Complete 50mm Diameter Sample.

Code: 25-0455

Product Group: Table Top Consolidation Apparatus, Pneumatic Consolidation Apparatus, Fixed Ring Consolidation, High pressure application consolidation cells and accessories

- 50 mm dia samples
- Integral water reservoir
- Supplied with upper and lower porous disc and cutting ring
- Manufactured from corrosion resistant materials
- Maximum working stress 8 mpa

Specification

Application	High pressure
Specimen Dia	50 mm
Specimen area	1963 mm ²
Beam ratio	10:1
Load kg	1
Stress	50 kPa
Typical max stress	8 MPa
Stress for 1 kg m ²	50 kPa
Application	High Pressure
Specimen Diameter	50 mm
Specimen Area	1963 mm ²
Beam Ratio	10:01
Load	1 kg
Stress	50 kPa
Typical Maximum Stress	8 MPa
Stress for 1 kg	50 kPa



50mm Dia Upper and Lower Porous Stones for Use on EL25-0455 Series Cell.

Code: [25-0455/13](#)

Product Group: [Fixed Ring Consolidation](#), [High pressure application consolidation cells](#) and [accessories](#)



Calibration Disc 50mm Cell

Code: [25-0461](#)

Product Group: [Fixed Ring Consolidation](#), [High pressure application consolidation cells and accessories](#)



Consolidation Cell/ Oedometer Complete 75mm Diameter Sample

Code: 25-0503

Product Group: Table Top Consolidation Apparatus,
BS EN consolidation cells and accessories,
Pneumatic Consolidation Apparatus, Fixed Ring
Consolidation

Specification

Application	BS/EN 10:1
Specimen Dia	75 mm
Specimen area	4418 mm ²
Beam ratio	9:1
Load kg	1
Stress	20 kPa
Typical max stress	3.2 MPa
Stress for 1 kg m ²	20 kPa
Application	BS
Specimen Diameter	75 mm
Specimen Area	4418 mm ²
Beam Ratio	10:01
Load	1 kg
Stress	20 kPa
Typical Maximum Stress	3.2 MPa
Stress for 1 kg	20 kPa



Cutting Ring 75mm Cell.

Code: [25-0506](#)

Product Group: [BS EN consolidation cells and accessories](#), [Fixed Ring Consolidation](#)

Standards

BS 1377-5



Standpipe Panel.

Code: [25-0609](#)

Product Group: [Compaction Permeameter](#)

Complete with three glass tubes of 1.5, 3 and 5 mm diameter bore, approximately 1.4 metres long. Supplied with metre scale and thick walled flexible tubing. The glass tubes are fitted to a panel for wall mounting and connected to a 3-way outlet valve. Complete with three glass tubes of 1.5, 3 and 5 mm diameter bore, approximately 1.4 metres long. Supplied with metre scale and thick walled flexible tubing. The glass tubes are fitted to a panel for wall mounting and connected to a 3-way outlet valve.



Digital Direct/Residual Shear Apparatus Complete with Lever Loading Assembly. 220-240V 50/60Hz 1Ph.

Code: 26-2114/01

Product Group: Direct/Residual Shear Apparatus,
Direct/Residual Shear Apparatus

- Microprocessor control
- Large on-board LCD screen display
- Direct entry via touch sensitive keyboard
- Rapid approach and return to start datum
- Fully variable speed, 0.00001 to 9.99999 mm/minute
- Accepts specimens up to 100 mm square

The ELE Direct Shear Apparatus accepts specimens 60 mm, 100 mm square or 2.5 inches in diameter. The use of a microprocessor controlled drive system and keyboard entry gives the apparatus a wide range of features that include pause and speed reset during test, RS 232C interface, operator programming of speed and control functions, self test diagnostics and many other features. A return to start datum provides a positive means of reversing the shearbox when either preparing for a new test or continuing with residual testing procedures.

Safety forward/reverse travel limit switches are fitted as standard and monitored through the electronics system control.

The electronics are housed in a modern moulded shroud, which includes a large LCD display and keyboard entry. The apparatus is enclosed in a robustly constructed case, has been designed for floor mounting and is supplied complete with carriage, loading hanger and 10:1 lever loading device.

Standards

ASTM D3080, AASHTO T236, BS 1377, EN 1997-2

Further Information

for 220 - 240 V AC, 50 - 60 Hz, 1 ph.

Specification

Sample Size

Accepts either 2.42", 2.5" diam.; 60 mm square samples using accessory shear box assemblies, not included.

Speed Range

Variable in either English or Metric units

Product Sheet

www.ele.com
+44 (0) 01525 249 200



	between 0.000001" (0.00001 mm) to 0.399999" (9.99999 mm) per minute.
Shear Force	1,100 lbf. (5.0 kN) maximum.
Vertical Load	2,200 lbf. (10.0 kN) using 10:1 lever ratio.
Dimensions	44.7" l. x 12 .6" w. x 49.6" h. (1,135 x 320 x 1,260 mm).
Weight	130 kg

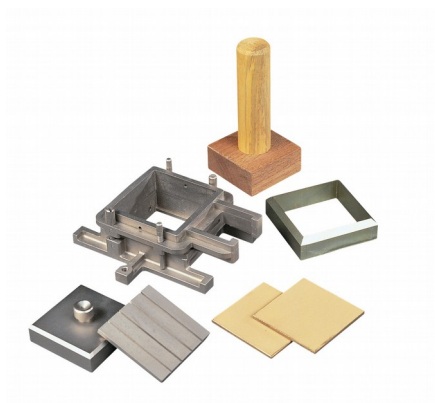


Set of Weights 50 kg Slotted.

Code: [26-2132](#)

Product Group: [Application of Normal Stress](#)

Normal stress is applied to the specimen through the lever loading device and the appropriate slotted weights



Shear Box Assembly 100mm Sq.

Code: [26-2197](#)

Product Group: [Shear Box Assemblies](#), [Shear Box Assemblies](#)

- Manufactured from corrosion resistant materials
- Sample size 100 x 100mm x 25mm high meeting BS 1377
- Incorporates PTFE faced box separation screws to reduce friction
- Supplied complete with upper and lower porous plates and loading pad
- Suitable for quick undrained or drained/residual tests.

Standards

ASTM D3080, AASHTO T236

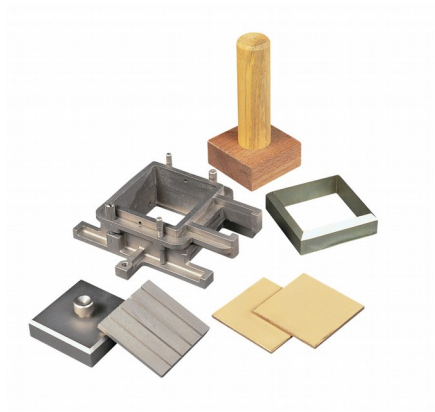
Further Information

All shearbox assemblies are designed to fit the carriage of 26-2114 series Digital Direct/Residual Shear Apparatus. They are supplied complete with three porous plates, one retaining plate and a loading pad. The three sizes supplied comply with the relevant requirements of BS 1377 and ASTM D3080. All assemblies can be used for quick shear tests or drained/residual shear tests.

Optional accessories are available including specimen cutters and extrusion tools.

Specification

Specimen area	100 x 100 mm
Specimen thickness	25 mm
Weight kg	5.2
Relevant standard	BS 1377



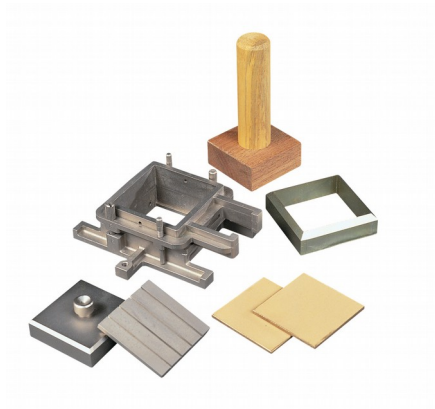
Porous Plate 100mm Sq.

Code: [26-2197/10](#)

Product Group: [Shearbox Assemblies- Accessories and Spares](#), [Shearbox Assemblies- Accessories and Spares](#)

Standards

ASTM D3080, AASHTO T236



Specimen Cutter 100mmsq.

Code: [26-2201](#)

Product Group: [Shearbox Assemblies- Accessories and Spares](#), [Shearbox Assemblies- Accessories and Spares](#)

Standards

ASTM D3080, AASHTO T236



Specimen Extrusion Tool 100 mm sq

Code: [26-2205](#)

Product Group: [Shearbox Assemblies- Accessories and Spares](#), [Shearbox Assemblies- Accessories and Spares](#)

Standards

ASTM D3080, AASHTO T236



DSU Electronic Readout and Control System 220 - 240 V AC 50/60 Hz

Code: [27-1300/01](#)

Product Group: [Data Logging with the DSU](#), [Electronic Instrumentation](#), [Automatic Data Acquisition - CBR](#), [Electronic Instrumentation](#), [Electronic Instrumentation](#), [Data Logging with the DSU](#)

· Download the full brochure here
[[/Page/catalogue-download/NTRmZS9UaGUgTkVXIERTVSBVU0EucGRm](#)]

- 4 channel automatic control and data-logging unit
- Automatic, dual-frame control
- Performs CBR, Marshall, Unconfined Compression, Direct and Residual Shear, One-Dimensional Consolidation and Unconsolidated Undrained tests
- LAN connection - software can be running anywhere on your server
- Never lose data from power fails - 2 gigabytes of non-volatile memory
- Extended warranty

The Data System Unit (DSU) is a versatile instrument designed to accommodate the general logging requirements of geotechnical and materials testing engineers. Its intelligent interface allows the user to work with a range of different sensors.

Further Information

The DSU has two distinct modes of operation. The first is referred to as DS mode (DataSystem) for operation with ELE International's established DS7 geotechnical testing software.

DS MODE

- Up to four one dimensional consolidation tests
- Up to two CBR tests
- One direct/residual shear test
- One triaxial quick un-drained test

DU MODE

- Up to two Marshall tests
- Up to two CBR tests
- Up to two Unconfined compression tests
- Automatic frame control

OVERVIEW

Product Sheet

www.ele.com
+44 (0) 01525 249 200



- Touch Screen data entry for standalone operation, Marshall/CBR/Quick un-drained
- Automatic single and dual frame control (with multiplex 50 frame)
- Log memory of 2 gigabytes
- Non-volatile memory
- Ethernet TCP/IP link and serial comms support
- Market leading signal stability
- Certificate and manual calibration features

Become a member of the ELE International web site, add this new product to a wishlist to receive a quote! Click here [\[Login\]](#)

This product is now available in the USA and Canada!



S-Type Load Cell 5 kN.for Use with Direct/Residual Shear Machine. Fitted with 5 Pin Din Plug.

Code: [27-1561](#)

Product Group: [Load Measurement, Measurement of Load \(Shear Stress\)](#)

- Repeatability better than $\pm 0.02\%$ of rated output
- Non-Linearity better than $\pm 0.03\%$ of rated output
- Supplied complete with 5-pin DIN type connector for connection to GDU

Ideally suited for a wide range of applications, ELE S-type load cells provide high accuracy and minimum deformation. Various models are available, with the necessary adaptors, for use with ELE Triaxial Load Frames, Multiplex 50/Marshall Test 50/CBR Test 50 and Direct Shear machine.

Standards

BS 1377, ASTM D3080



Consolidation Transducer Assembly 15mm Travel Fitted with 5 Pin Din Plug.

Code: [27-1649](#)

Product Group: [Displacement Measurement](#),
[Displacement Transducers](#), [Vertical settlement measurement](#)

Fitted with 5 pin DIN plug.

Supplied with Calibration Certificate.

Specification

Construction	Fully encapsulated electronics, sealed in a stainless steel case
Excitation	11 V DC
Connector	5-pin DIN type
Mounting bracket	Included as standard
Weight kg	0.45



**Vertical Displacement Transducer
Assembly 15mm Travel with 5 Pin Din
Plug Bracket for Shear Box**

Code: 27-1689

Product Group: [Displacement Measurement,](#)
[Measurement of Horizontal and Vertical Movement,](#)
[Displacement Transducers](#)

0 to 10 mm range. For use with Direct/Residual Shear Machines. •Ideally suited for use with GDU for accurate displacement measurements

- Models available for use in consolidation, shear, CBR and triaxial test applications
- Supplied complete with mounting hardware for specified products

Displacement Transducers are used in consolidation, shear, CBR and triaxial test applications for accurate displacement measurements. They are supplied complete with a 5-pin DIN type connector for direct connection to the GDU.

Specification

Construction	Fully encapsulated electronics, sealed in a stainless steel case
Excitation	12 V DC
Connector	5-pin DIN type
Mounting bracket	Included as standard
Weight kg	0.45
Construction	Fully encapsulated electronics, sealed in a stainless steel case.
Excitation	10vDC.
Connector	5-Pin DIN type.
Mounting Bracket	Included as standard.
Weight	Net 1 lb. (0.45 kg).



**Horizontal Displacement Transducer
Assembly 15mm Travel 5 Pin Din Plug
Mounting Pillar**

Code: 27-1697

Product Group: [Displacement Measurement,](#)
[Measurement of Horizontal and Vertical Movement,](#)
[Displacement Transducers](#)

- Ideally suited for use with GDU for accurate displacement measurements
- Models available for use in consolidation, shear, CBR and triaxial test applications
- Supplied complete with mounting hardware for specified products

Displacement Transducers are used in consolidation, shear, CBR and triaxial test applications for accurate displacement measurements. They are supplied complete with a 5-pin DIN type connector for direct connection to the GDU.

Specification

Construction	Fully encapsulated electronics, sealed in a stainless steel case
Excitation	13 V DC
Connector	5-pin DIN type
Mounting bracket	Included as standard
Weight kg	0.45
Construction	Fully encapsulated electronics, sealed in a stainless steel case.
Excitation	10vDC.
Connector	5-Pin DIN type.
Mounting Bracket	Included as standard.
Weight	Net 1 lb. (0.45 kg).



DS7.2 One-Dimensional Consolidation Program for Windows 7, 32/64 bit

Code: [27-1773](#)

Product Group: [DS7.2 One-Dimensional Consolidation Software](#), [DS7.2 for Windows 7](#), [DS7.2](#)

DS7.2 Consolidation Software provides all basic functions needed to record and analyse consolidation test data. Options are available for monitoring settlement on a log time or square-root time basis. Printouts and graphical plots are available for all stages including M_v and C_v moisture content, voids ratio plots, and initial sample conditions.



DS7.2 Direct and Residual Shear Strength Program for Windows 7, 32/64 bit

Code: 27-1793

Product Group: DS7.2 Direct/Residual Shear Software, DS7.2 for Windows 7, Automatic Data Acquisition - Direct Shear, DS7.2

This unique package provides test options for quick undrained or drained shear tests with the user selectable option of residual testing. Individual test results can be linked together to produce the Coulomb Envelope. Printouts and plots are available for sample description and basic test data such as moisture content, etc. Realtime plots of settlement, shear versus displacement and vertical displacement during shearing is readily available via the PC screen or printer.



Plastic Limit Set

Code: [2810E](#)

Product Group: [Plastic Limit Set](#)

Set includes:

- 1 Plastic Limit Plate (24-0810) 12" x 12" x 3/8".
- 1 25 ml Graduated Cylinder (88-6002A).
- 1 Mixing Dish (88-6710).
- 1 Doz. Aluminum Moisture Cans (88-7002).
- 1 Flexible Spatula (88-7500).
- 1 Rod Comparator (24-0811).

Standards

ASTM D4318, AASHTO T90



Shrinkage Limit Set

Code: [2820E](#)

Product Group: [Shrinkage Limit Set](#)

Set includes:

- 1 Monel Shrinkage Dish (24-1550).
- 1 Crystallizing Dish (24-1600).
- 1 Shrinkage Prong Plate (24-1500).
- 1 25 ml Graduated Cylinder (88-6002A).
- 1 Evaporating Dish (88-6714).

Standards

ASTM D427, AASHTO T92

Further Information

Three pounds of mercury and other accessories required for shrinkage limit test; not included



Plate Bearing Apparatus Complete. 500kN Capacity

Code: [29-3800](#)

Product Group: [Plate Bearing Apparatus, In-situ Testing](#)

Applications include the determination of bearing capacity of the soil in situ, designing for static loads on spread footings, and repetitive and non-repetitive plate loading tests of soils and flexible pavements.

Manufactured from machined steel plate with a finished thickness exceeding 25 mm. The plate has concentric markings on one face. All plates are supplied with two lifting eyes except for the 150 mm dia plate.

NOTE: to successfully perform the test, a reaction load is required.

IMPORTANT: The equipment is used in conjunction with a reaction beam. This is not supplied with the equipment.

Standards

BS 1377, EN 1997-3, ASTM D1194, ASTM D1195, ASTM D1196

Further Information

Comprising of:

- Hydraulic Jack 500 kN capacity
- Pressure system
- Datum bar
- 4x dial gauges 50 mm travel x 0.01 mm divisions
- 4x bearing plates: 150 mm, 305 mm, 455 mm and 760 mm diameter

Specification

Loading jack	500 kN capacity with integral ball seating
Pump	Hand operated, single speed with integral oil reservoir
Hose	3 m long. Maximum pressure 70 MPa with quick release couplings
Gauge	100 mm dia with quick release couplings and graphs to convert readings to kN, kgf and

Product Sheet

www.ele.com
+44 (0) 01525 249 200



Weights

lbf
Loading jack 24 kg.
Pressure system 12.5 kg



Core Cutter 100mm Id By 130mm Long.

Code: [29-5300](#)

Product Group: [Core Cutter Apparatus](#)

Standards

BS 1377



Driving Dolly for EL 29-5300

Code: [29-5320](#)

Product Group: [Core Cutter Apparatus](#)

Standards

BS 1377



Driving Rammer for EL 29-5320

Code: [29-5340](#)

Product Group: [Core Cutter Apparatus](#)

Standards

BS 1377



Slump Test Set BS & ASTM. C/W Slump Cone Base Plate Steel Rule Tamping Rod & Funnel.

Code: [34-0192](#)

Product Group: [Slump Test](#)

Test is appropriate for concrete mixes of medium and high workability.

The test is carried out by filling the slump cone with freshly mixed concrete, which is tamped with a steel rod in three layers. The concrete is levelled off with the top of the slump cone, the cone removed, and the slump of the sample is immediately measured.

BS and ASTM comprising of slump cone, base plate, steel rule, tamping rod and funnel.

Further Information

****NOT AVAILABLE FOR SALE IN THE USA****



Bulk Density Measure 30 Litre

Code: [34-2800](#)

Product Group: [Bulk Density Measures, Fresh Concrete - Bulk Density Measures](#)

Manufactured from heavy gauge steel these bulk density measures comply with the requirements of either BS 812 or ASTM C-29. Other than the 3 litre size, all measures incorporate carrying handles as standard.

Complies to: ASTM C138, ASTM C29, BS 812, EN 1097-3, EN 12350-6

Standards

BS 812, EN 1097-3, EN 12350-6, ASTM C138

Further Information

****NOT AVAILABLE FOR SALE IN THE USA****

For other bulk density measures see the aggregates section



Bulk Density Measure 10 Litre

Code: 34-2830

Product Group: Bulk Density Measures, Fresh Concrete - Bulk Density Measures

Manufactured from heavy gauge steel these bulk density measures comply with the requirements of either BS 812, EN 1097-3, 12350-6 or ASTM C138. All measures incorporate carrying handles as standard. The measures are coated against corrosion.

Standards

EN 12350-6, ASTM C138, EN 1097-3

Further Information

****NOT AVAILABLE FOR SALE IN THE USA****

For other bulk density measures see the aggregates section



Compacting Bar 25mm Sq X 380mm

Code: [34-2910](#)

Product Group: [Accessories for Concrete Moulds,](#)
[Precision Air Entrainment Meter](#)

Steel, 380 x 25 mm (length x square) tamping area,
EN/BS.

Standards

EN 12390-1



Concrete Mixer 56/40 Litre Capacity.

Code: 34-3540/01

Product Group: ELE Concrete Mixer

- Portable and compact
- Tipping mechanism
- Adjustable blades
- Simple to clean and maintain

It is essential that the mixing of fresh concrete for laboratory test samples is thorough and consistent. The ELE Concrete Mixer is ideally suited for this purpose.

The mixer has been developed to give efficient mixing of both wet and dry materials. The mixing pan is removable and tilts for easy access to the pan and emptying on completion of the mixing operation. It is rotated by a turntable driven by a 1500 W, IP55 protected electric motor.

The mixer head lifts clear to provide maximum access to the pan and holds the mixing blades at a constant depth during the mixing operation. The blades are readily adjusted to suit the different types and volume of materials to be mixed.

Complies to BS 1881-125.

Further Information

****NOT AVAILABLE FOR SALE IN THE USA****

220 - 240 V AC, 50 Hz, 1 ph.

Dimensions: 950 x 1050 x 1250 (mm)

Weight (Approx.) 255 kg

Power: 1500 W



Vibrating Table 600 X 400mm Table Top. 220-240V 50Hz 1Ph. Supplied with clamping assembly

Code: [34-6250/01](#)

Product Group: [Vibrating Table](#)

The ELE vibrating table is a compact unit providing controlled vibro-compaction in the laboratory, using cube or cylinder moulding equipment.

Vibrating table mounted on a steel stand, supplied with clamp assembly.

Complies to EN 12390-2, EN 12350-6 (BS 1881-107), EN 12350-7 (BS 1881-106)

Standards

EN 12390-2, EN 12350-6, EN 12350-7

Further Information

****NOT AVAILABLE FOR SALE IN THE USA****

3000 cycles per minute. For 220 - 240 V AC, 50 Hz, 1 ph.

Specification

Dimensions (table top)	600 x 400 mm
Maximum no. Cube moulds	2 x 150 mm ²
Clamp Assembly	Single
Weight	60 kg



Vibrating Poker 25mm Dia Tip 290mm Long. 220-240V 50/60Hz 1Ph.

Code: [34-6431/01](#)

Product Group: [Vibrating Poker](#)

- High amplitude and speed
- Flexible shaft for long life

Used as an internal means of vibratory compaction. The poker is inserted into the concrete which is then compacted by the high frequency vibration action. For use in either laboratory or site environments, the diameter of the vibrating tip must not exceed 25% of the smallest dimension of the specimen.

Complies to EN 12390-2, ASTM C31/C31M, ASTM C192/C192M, AASHTO T23, AASHTO T126

Further Information

****NOT AVAILABLE FOR SALE IN THE USA****

For 220 - 240 V AC, 50 - 60 Hz, 1 ph

Specification

Tip Dimensions	25 mm diameter x 290 mm long
Shaft dimensions	2.0 m long
Speed	12,000 vibrations/min.
Overall Dimensions	200 x 300 x 350 mm
Weight	7 kg



Buoyancy Balance 16 kg X 0.1 G

Code: 34-8100/09

Product Group: Hardened Concrete - Buoyancy Balance, Percentage Refusal Density (PRD)

The density of hardened concrete specimens such as cubes and cylinders can be quickly and accurately determined using a Buoyancy Balance. The Buoyancy Balance system developed by ELE consists of a rigid support frame, incorporating a water tank mounted on a platform. The water tank has internal dimensions of 380 x 240 x 280 mm (L x W x H). A mechanical lifting device is used to raise the water tank through the frame height immersing the specimen suspended below the balance. The balance supplied calculates the specific gravity of the sample automatically. The balance may also be used as a standard weighing device, thus providing a versatile and comprehensive weighing system in the laboratory.

Includes:

- Lifting frame for Buoyancy balances
- Expansion tank 4 gallon capacity
- Electronic Balance 16kg x 0.1g with auto density calculation

Standards

EN 12697-32, EN 13280-4, BS 598-104

Further Information

****NOT AVAILABLE FOR SALE IN THE USA****



Standard Concrete Test Hammer

Code: [35-1480](#)

Product Group: [Concrete Test Hammer, Surface Hardness](#)

The hammer is intended for testing the quality of concrete in finished structures such as buildings and bridges. Supplied complete with carrying case and carborundum stone, the hammer is suitable for testing concrete with compressive strengths of 10 to 70 N/mm².

Standards

ASTM C805

Specification

Body	Includes indicator scale, calibration curves.
Calibration Curves	Rebound number vs. compressive strength.
Rubbing Stone	Prepares test surface.
Accuracy	Within 15 %.
Carrying Case	Plastic.
Weight	Net 3 lbs. (1.4 kg).



Testing Anvil

Code: [35-1530](#)

Product Group: [Concrete Test Hammer](#), [Surface Hardness](#), [Testing Anvil](#)

Standards

ASTM C805



Ultrasonic Concrete Tester 110-240V 50/60Hz 1Ph

Code: 35-2302/09

Product Group: Ultrasonic Detection, Ultrasonic
Concrete Test

35-2302/09 is the most versatile Concrete Tester to date. It has all the functions of the classic Concrete Tester, but offers additional benefits.

Designed with laboratory use in mind, its compact size, rugged construction and optimized power consumption make it equally suitable for on-site use.

Along with the traditional transit time and pulse velocity measurement, 35-2302/09 offers path length measurement, perpendicular crack depth measurement and surface velocity measurement.

Optimized pulse shaping gives greater transmission range at lower voltage levels. This coupled with automated combination of the transmitter voltage and the receiver gain ensures an optimum received signal level, ensuring accurate and stable measurements.

The waveform can be viewed either via an external oscilloscope connection or directly on a connected PC screen.

Full remote control capability completes the package.

Complete with two 54 kHz transducers each with 3.6 metres of cable, coupling agent, carrying case and instruction manual.

Applications include pulse velocity determination, quality assessment and uniformity, modulus of elasticity measurement, curing status evaluation, crack depth estimation, assessment of fibre reinforced concrete.

Consists of display unit, 2 transducers (54 kHz), 2 BNC cables 1.5m, couplant, calibration rod, USB charger with USB-cable, 4x AA (LR6) batteries, data carrier with software, documentation and carrying case.

Complies to BS 1881-203, EN 12504-4, ASTM C597.

Further Information

For 110 - 240 V AC, 50 - 60 Hz, 1 ph.

Specification

Measuring range

Up to 15 m depending on

Product Sheet

www.ele.com
+44 (0) 01525 249 200



Bandwidth	concrete quality
Technology	20 to 500 kHz
Measuring resolution	Ultrasonic pulse velocity
Pulse voltage UPV	0.1 us
Receiver gain	125 to 500 V
Pulse shape	1x, 10x, 100x, auto
Nominal transducer frequency	Square wave
Number of channels	24-500 kHz
	1



Advanced Cover Meter

Code: [35-2304/09](#)

Product Group: [Rebar Detection, Surface Hardness](#)

Advanced cover meter based on the new generation touchscreen with universal probe and scan cart. An enhanced correction factor for maximum cover accuracy on congested rebar arrangements. Dedicated functionalities for mapping concrete cover and for reporting any 2D rectangular rebar arrangement.

Highest cover measurement accuracy ever through Artificial Intelligence (AI) feature.

Full 2D rebar visualisation with detailed cover, rebar size and spacing data for fast reporting.

Applications include: locate rebars before drilling, cutting and coring, spot check of cover and rebar size, measurements on rough surfaces with scan cart, measuring wide areas over long distances, conformity check of new buildings, fire resistance assessment, investigation on unknown structures and complete imaging of rebar geometry.

Specification

Cover measuring range	Up to 185 mm
Cover measuring accuracy	± 1 to 4 mm, depending on cover
Path measuring accuracy on smooth surface	0.5 to 1.0 % of measured length
Diameter measuring range	Up to 63 mm
Diameter measuring accuracy	± 1 rebar size



Universal Testing Machine, automatic, 500 kN tension / 1000 kN compression

Code: 36-1415/01

Product Group: Industrial Universal Testing Machines

The Automatic Universal Testing Machine has been designed to meet the need for reliable and consistent tensile testing of steel rebars up to 22 mm diameter and compression testing of concrete cube samples up to 150 mm and cylinders up to 160x320 mm.

This lightweight low cost and highly accurate machine is suitable for on-site testing and educational purposes. It features the complete automatic test cycle with a closed loop digital readout. Once the specimen parameters have been introduced, it is sufficient to press the START button to complete the test.

The test machine consists of three main parts: Frame, power pack and data acquisition & control system. On the measuring system, a pressure transducer is used for load measurements and a Linear Potentiometric Displacement Transducer is used for strain measurements. Each part has been designed to manufacture machines with a high degree of mechanical stability that complies to BS 1610, ASTM C-39, E4 AASHTO T-22, NF P18-411, DIN 51220 (with suitable platen set) standards.

FRAME:

The load frame is a welded steel fabrication carrying the ball-seated upper platen or the universal grip assembly. Positively located on the loading ram which is protected from debris by a cover, the lower platen is marked for the centering of cube and cylinder specimens. The dimensions of the frame allow the tension tests on steel rebar up to 22 mm dia., and flat specimens up to 15mm thick and 50mm wide, compression tests on concrete cylinders up to 320 mm long x 160 mm diameter and cubes up to 150 mm. The machine is supplied complete with 5 pcs. 90 mm x Ø165, 2 pcs. 50 mm x Ø165 and 2 pcs. 30 mm x Ø165 distance pieces. To test samples shorter than 150 mm extra distance pieces should be ordered. The frame has a double acting piston with over travel protection to stop the motor when the maximum platen or grip travel is reached.

SOFTWARE:

The Automatic Compression and Tensile Testing machine can be controlled (Start, Stop commands) by a computer with the software. This software provides data acquisition and management for compression, tensile and splitting tensile test throughout the test execution. The advanced functions for data base

management provides an easy navigation of all saved data. The test results certificate includes all descriptive information. Therefore, test parameters can be set and details about the test carried out such as client details, test type, specimen type, user info and other information required can be entered and printed out as well as test report and graph.

Tests that can be done using the software:

- Compressive Strength of Concrete Cylinders or Cubes
- Tensile Splitting Strength of Concrete Cylinders or Cubes
- Tensile Splitting Strength of Concrete Paving Blocks
- Compressive Strength of Hydraulic-Cement Mortar
- Tensile Test of Reinforcing Ribbed Steel Bars

Foreign Language Support and Customizable User Interface All contents of experimental data and additional information can be organized by user. Software can be performed in different languages.

Capability to Save 24 test results of different specimens in one test folder Test results, graphics and properties of 24 different specimens can be saved in one folder. Old test folders can be reviewed and be edited easily. Advanced Graphic User Interface Software.

Graphical data on the screen is refreshed simultaneously during test procedure Load values can be monitored in high resolution graphics at every 100 milliseconds. User can highlight all 24 different specimen curves or preferred ones in different colors on the graphics. Zooming in-out and dragging can be done easily by mouse. Peak values of curves can be marked on the graphics and user can get load value of any point on the graph via high resolution.

Able to save frequently used texts in memory and recall them when necessary frequently used information like name and location of the laboratory, type and dimensions of mostly used specimens are held in memory and can be written automatically by right clicking on information boxes and selecting frequently used text in menu.

Capable to access and use previously done test data user can access any data of previously completed tests and use in his/ her new report since most of the tests have same structure and properties.

Able to edit test parameters of the testing equipment through software all test parameters supported by

testing equipment can be changed remotely via software. All test parameters specified by user are downloaded to the device before initialing the test procedure. By this way predefined device parameters will not cause errors in test results.

Graphical outputs and reports can be saved as a MS Excel worksheet Test result parameters and graphics are transferred to MS Excel worksheet properly to give user a chance to edit any data and graph easily.

Maximum Flexibility to edit report and graph templates user can design his/her custom report template and graphic scheme in MS Excel. In software part, user will define which data will be screened in which cell on the worksheet.

Standards: BS 1610, ASTM C-39, E4 AASHTO T-22, NF P18-411, DIN 51220 (with suitable platen set).

Following tests can be done with the software supplied; EN 12390-3, EN 12390-6, EN 1338, EN 196-1, EN 15630-1 and EN ISO 6892-1

Specification

Load capacity in tension (kN)	500
Load capacity in compression (kN)	1000
Max.vertical clearance with compression test accessory (mm)	768
Max. distance between grips, excluding piston travel (mm)	268
Distance between columns (mm)	305
Max. ram travel (mm)	100
Resolution digital display (kN-mm)	0.01
Load measurement accuracy (starting from the first 10% of load range)	+/-1 %
Strain measurement accuracy (mm)	0.01
Overall dimensions approx. (mm)	1660 x 800 x 500
Weight (kg)	535
Power supply	220-240 V 50-60 Hz, 1 ph



Blaine Air Permeability Apparatus

Code: 38-1000

Product Group: Blaine Fineness Apparatus,
Determination of Fineness Blaine Apparatus

- Designed for the determination of fineness to EN 196-6, BS 4359-2, ASTM C204
- Supplied complete with stainless steel cell perforated disc and plunger Manometer U-Tube Aspirator bottle of Manometer liquid (pure mineral 1 litre) and a box of filter papers

Standards

EN 196-6, EN 459-2, EN 13286-44, BS 4359-2, ASTM C204, AASHTO T153

Specification

Cell	Stainless steel; 12.70 ±0.10 mm i.d.
Disk	0.9 ±0.1 mm thick with 30-40 one mm diam. holes.
Plunger	Stainless steel.
Manometer	U-tube glass with ground joint, stop cock and rubber bulb assembly.
Filter Paper	12.70 mm diam.
Fluid	Pure Mineral Oil.
Weight	Net 7 lbs. (3.2 kg).



Blaine Air Permeability Cell

Code: [38-1000/15](#)

Product Group: [Blaine Fineness Apparatus](#),
[Determination of Fineness Blaine Apparatus](#)

Spare: Stainless steel with a perforated disc and plunger.

Standards

ASTM C204, EN 196-6, AASHTO T153



Le Chatelier Flask

Code: 38-1200

Product Group: Le Chatelier Flask, Specific Gravity (relative density) of Hydration Cement

For determining the density of hydraulic cement and lime, supplied complete with calibration certificate. Capacity 250ml. Graduated from 0 to 1 ml and from 18 to 24 ml graduations. Accurate to 0.05 ml.

Standards

EN 196-6, ASTM C128, ASTM C188, E 694, AASHTO T133

Specification

Graduations

Zero mark represents 250 ml, the capacity of the large bulb; neck graduations from 0-1 ml in 0.1 ml divisions with two extra 0.1 ml graduations above the 1.0 and below the 0 marks; bulb portion of neck holds 17 ml; top portion of neck graduated from 18-24 ml in 0.1 ml divisions; 24 ml capacity

Stopper

Ground glass

Weight

Net 8 oz. (227 g)



EN Initial and Final Set Needle

Code: [38-2110](#)

Product Group: [Vicat Method](#)

1.13mm diameter and 1.13mm diameter with special footing.

Standards

EN 196-3, EN 13454-2

Further Information

****NOT AVAILABLE FOR SALE IN THE USA****



ASTM Initial Set Needle

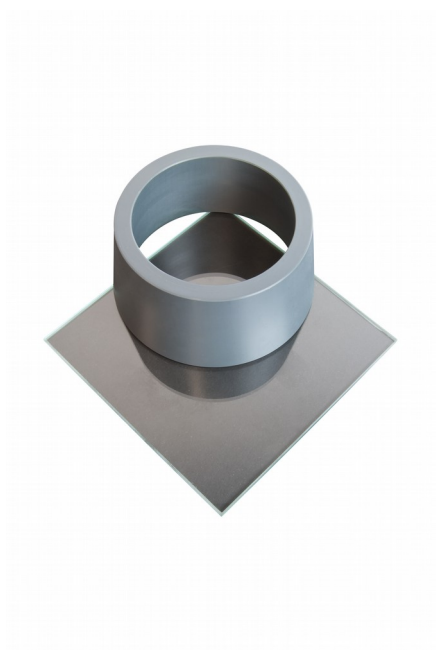
Code: [38-2620](#)

Product Group: [Vicat Apparatus](#), [Vicat Method](#)

1 mm diameter.

Standards

ASTM C187, ASTM C191



ASTM Vicat Mould

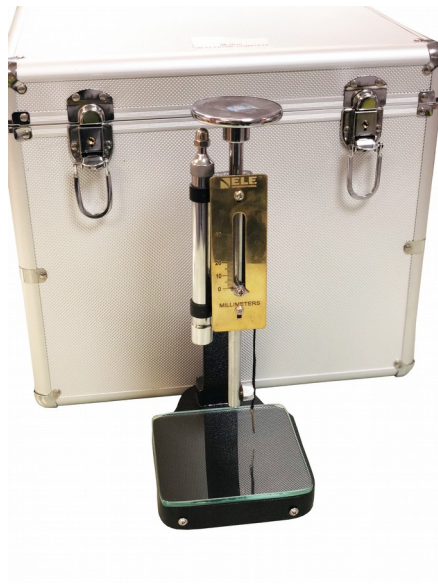
Code: [38-2660](#)

Product Group: [Vicat Apparatus](#), [Vicat Method](#),
[Automatic Vicat](#)

Accessory: manufactured from non-absorbent plastic
and supplied complete with a glass base plate.

Standards

ASTM C187, ASTM C191



Vicat Frame Complete.

Code: [38-4010](#)

Product Group: [Vicat Method](#)

Vicat Apparatus is for determining the normal consistency, standard consistency and time of setting of cement and lime in accordance with IS, ASTM, BS and AASHTO specifications. The procedure, as recommended in various standards, is for determining the quantity of water required to produce a cement paste of standard consistency. The standard consistency is attained when the 10 mm plunger of the apparatus penetrates the material to a pre-determined depth under free-fall. A new sample is prepared and tested with initial and final needles in accordance with the procedure described in various specifications

Complies to EN 196-3, EN 480-2, EN 13454-2, ASTM C187, ASTM C191, AASHTO T129, AASHTO T131.



Wire Basket Brass with Handle Nominal 6000Cm³ Capacity with 1.7mm Wire Mesh.

Code: 42-1005

Product Group: Particle Density (specific gravity) and Water Absorption for Coarse Aggregates

Relative Density 200 mm diameter x 190 mm deep, 1.70 mm wire mesh.

Complies to EN 1097-6, EN 12697-6, BS 812, ASTM C127, AASHTO T85

Standards

EN 1097-6, EN 12697-6, BS 812, ASTM C127, AASHTO T85

Further Information

NOT AVAILABLE FOR SALE IN THE USA



Set of 12 Abrasive Charges (ASTM).

Code: [42-5300/10](#)

Product Group: [Los Angeles Abrasion Machine](#), [Los Angeles Abrasion Machine](#)

ASTM Set of 12.

Standards

EN 1097-2, ASTM C131, ASTM C535, AASHTO T96



Set of 12 Abrasive Charges EN)

Code: [42-5305/10](#)

Product Group: [Los Angeles Abrasion Machine](#)

EN Set of 12.

Standards

EN 1097-2, ASTM C131, ASTM C535

Further Information

****NOT AVAILABLE FOR SALE IN THE USA****



Los Angeles Abrasion Machine Meets ASTM and European Standards. 220-240V 50Hz 1Ph.

Code: [42-5315/01](#)

Product Group: [Los Angeles Abrasion Machine](#), [Los Angeles Abrasion Machine](#)

The machine consists of a closed hollow cylindrical steel drum rotating around its horizontal axis on ball bearing units mounted on a sturdy base framework.

The drum is driven at a speed of between 30 - 33 rpm via an enclosed belt drive arrangement from an electric motor/gearbox unit situated on the base frame. Inside the drum a full length steel shelf is attached, accessed by a dust-proof opening.

The cylinder incorporates a removable internal shelf, one shelf position is provided to meet the requirements of both the ASTM and EN test standards.

Controls are located easily on the right-hand side of the machine at convenient operator height.

Start and stop push buttons and a subtracting revolution counter allows the user to preset the number of revolutions before an automatic stop.

Standards

EN 1097-2, ASTM C131, ASTM C535, AASHTO T96, NF P18-573

Further Information

For 220 - 240 V AC, 50 Hz, 1ph.

Specification

Capacity	5,000 g each of aggregate and charge.
Drum Speed	30-33 rpm.
Frame	Welded structural steel.
Counter	Adjustable; automatic shut-off; push-button reset and adjustment.
Controls	Magnetic motor starter with overload protection and integral On-Off switches.
Dimensions	38.6" w. x 36.2" d. x 38.6" h. (980 x 920 x 980 mm).
Weight	Net 882 lbs. (400 kg).

Product Sheet

www.ele.com
+44 (0) 01525 249 200



Motor

1 HP



Electronic digital theodolite

Code: [500-175](#)

Product Group: [Surveying Equipment](#)

Supplied complete with instruction manual, protective cover, carrying case and a heavy duty, aluminium tripod.

Specification

Magnification	30x
Clear Objective Aperture	45 mm
Shortest Focusing Distance	1.4 mm
Accuracy	2 mgon (10 inches)
Min Reading	1 mgon (5')



Total Station with EDM, Tribach, Li-Ion Battery, Charger, Flat Prism, Reflector Pole and Carry Case

Code: **500-196**

Product Group: **Surveying Equipment**

The Tool Station is specifically designed for non-surveyors, such as site foremen architects and landscape gardeners etc. who have no direct surveying education. It is trouble-free, accurate and quick.

Many customers are very familiar with co-ordinates in their office based CAD design & drawing packages and the Builder is really just an extension of this environment in the field.

Clear and intuitive graphical interface increases workflow.

Data can be collected in the field as a series of points and transferred directly to the CAD package and a design can similarly be uploaded for setting out in the field.

Data can be exchanged via USB stick.

The software has a simple menu structure, which guides the user through each task in terminology that the layman can easily follow and understand.

The 500-196 will calculate all the angles and measure the distances with the in-built laser. Quick, Efficient, Accurate!

With the 500-196 you can call up plan data and record points, eliminating read and write errors.

Data can be exchanged via industrial grade USB stick, simplifying data handling.

It also features a direct DXF download function, tracking mode, setup anywhere function, optional volume calculation.

- Up to 120m reflectorless
- Up to 250m with flat prism or reflective tape.
- Internal Memory - up to 15,000 points
- Serial RS232 Interface
- USB Compartment
- Laser Plummet
- 1 keyboard
- Extended RedDot range
- Industrial USB Memory Stick
- USB Type A and mini B
- Volumes Calculation

- Data Im/Export to USB Stick
- Setout by co-ordinates or baseline offset
- Survey points with codes and point numbers

- Direct DXF download
- 1-Man Station
- Serial Interface
- Tracking Mode
- Laser Pointer Switch Key
- PC/Handheld Interface
- Laser Distance Measure
- Control Line Setup
- Free Station Setup
- Theft Protection
- Pit Stop Alert
- 3 Languages
- Electronic Levelling
- Sector Beep
- Dual Axis Compensator
- Endless Drives
- Laser Plummet
- Display Heating and Illumination
- Li-Ion Batteries
- Set Delivery
- Internal Memory (points): 15,000
- Accuracy/Option: 9"
- Laser Pointer
- Range without reflector (90% reflective):

120m

- Range to reflective tape (60mm x 90mm):

250m

- Laser Dot Size: At 30m: approx. 7mm x

10mm, At 50m: approx. 8mm x 20mm

- Weight incl. Battery & Tribrach: 5.1kg
- Operating Temperature: -20°C to +50°C
- Battery Type/Life: Li-Ion/approx. 20 hours
- Environmental: IP55
- Keyboard: Standard
- Switch Key: single function



Digital Point-Load Test Apparatus

Code: 77-0115

Product Group: Digital Point Load Tester, Point-Load Strength Test

Originally developed at Imperial College, London, the apparatus comprises a two-column fixed crosshead frame and a hand operated hydraulic jack. Pressure applied by the jack extends the piston carrying the lower conical point. The upper point is fixed to the crosshead with a scale mounted on the frame to provide specimen diameter information for use in point-load strength index calculations. Pressure is indicated directly on the digital readout unit. Loads up to 55 kN can be applied to specimens as large as 101.6 mm in diameter.

The apparatus is supplied complete with heavy-duty face mask.

Standard: ASTM D5731

Standards

ASTM D5731

Specification

Capacity	55 kN
Maximum sample size	101.6 mm
Load range	0 to 55 kN x 0.001 kN
Weight	25 kg



Set of Cones for Digital Point Load Tester

Code: [77-0115/10](#)

Product Group: [Digital Point Load Tester](#)

Further Information

Set of Two (Upper and Lower)



Point holder/locator for Digital Point Load tester

Code: [77-0115/14](#)

Product Group: [N/A](#)

Plate which sits beneath the lower point of the Digital Point Load tester



Set of 2 Conical Points & 1 Set of Internal Seals for 77-0115 Digital Point Load Tester.

Code: [77-0115/K](#)

Product Group: [N/A](#)

Spares kit for 77-0115



Clamped Boss Load Ring - 28.0 kN

Code: 78-0760

Product Group: Clamped Boss Load Rings, Digital Tritest 50 Load Frame, Load Measurement, Proving Rings, CBR-Test 50 Machine, Conversion of In-situ to Laboratory CBR, Load Measurement, CBR Loading Press, Hand-Operated, Force measurement

Standards

BS 1377, BS 1924

Specification

Capacity: kN, kgf, lbf	28.0, 2800, 6000
Typical Design sensitivity: N/div, kgf/div, lbf/div	25.5, 2.54, 5.45
Overall height mm	248
Approx weight kg	5.4
Capacity	28 kN
Value of CBR	Average range of CBR
Capacity - lbf	6,000
Capacity - kN	28
Capacity - kgf	2,800
Typical Design Sensitivity - lbf/div	5.45
Typical Design Sensitivity - N/div	25.5
Typical Design Sensitivity - Kgf/div	2.54
Overall Height	9.76" (248 mm)
Approx Weight	11 .9 lbs.(5.4 kg)



225 Litre Drying Oven

Code: 78-1250/01

Product Group: [Percentage Refusal Density \(PRD\)](#),
[Oven Drying Method](#), [Oven Drying Method](#), [Oven Drying Method](#)

The Drying Ovens are designed for drying large quantities of soils and aggregate samples and maintains temperature in accordance with BS and ASTM requirements.

- Fan assisted circulation
- Manual overheat reset
- Low temperature uniformity

Standards

EN 12697-32, EN 13280-4, BS 598-104, BS 1377

Specification

Capacity	225 litres
External Dimensions (l x w x h)	540 x 1040 x 940
Internal Dimensions (l x w x h)	440 x 920 x 600
Fluctuation	± 0.75°C
Rated power heater elements	2000 W
Shelves supplied	3
Shelf positions	4
Weight	80 kg



8in Dia ASTM Sieve 4.75mm Stainless Steel Mesh.

Code: 79-5020

Product Group: 8in Dia ASTM Brass Sieves, 8" Diameter ASTM Sieves, 8" Diameter ASTM Sieves, 8" Diameter ASTM Sieves

Standards

ASTM E11

Specification

Frames	Full height; 2 1/4" (51 mm) depth to mesh.
Construction	Polished and lacquered brass with S.S. mesh.
Nameplates	Show standard, alternate and Tyler Screen Scale equivalent designations.
Weights	Net 1 lb. (453 g).
Sieve Size or Number	No. 4
Sieve Opening Standard	4.75 mm
Sieve Opening Alternative (in.)	0.187



8in Dia ASTM Sieve 2.0mm Stainless Steel Mesh.

Code: 79-5070

Product Group: 8in Dia ASTM Brass Sieves, 8" Diameter ASTM Sieves, 8" Diameter ASTM Sieves, 8" Diameter ASTM Sieves

Standards

ASTM E11

Specification

Frames	Full height; 2 1/4" (51 mm) depth to mesh.
Construction	Polished and lacquered brass with S.S. mesh.
Nameplates	Show standard, alternate and Tyler Screen Scale equivalent designations.
Weights	Net 1 lb. (453 g).
Sieve Size or Number	No. 10
Sieve Opening Standard	2.00 mm
Sieve Opening Alternative (in.)	0.0787



8in Dia ASTM Sieve 850 Mic Stainless Steel Mesh.

Code: 79-5120

Product Group: 8in Dia ASTM Brass Sieves, 8" Diameter ASTM Sieves, 8" Diameter ASTM Sieves, 8" Diameter ASTM Sieves

Standards

ASTM E11

Specification

Frames	Full height; 2 1/4" (51 mm) depth to mesh.
Construction	Polished and lacquered brass with S.S. mesh.
Nameplates	Show standard, alternate and Tyler Screen Scale equivalent designations.
Weights	Net 1 lb. (453 g).
Sieve Size or Number	No. 20
Sieve Opening Standard	850 um
Sieve Opening Alternative (in.)	0.331



8in Dia ASTM Sieve 425 Mic Stainless Steel Mesh.

Code: 79-5160

Product Group: 8in Dia ASTM Brass Sieves, 8" Diameter ASTM Sieves, 8" Diameter ASTM Sieves, 8" Diameter ASTM Sieves

Standards

ASTM E11

Specification

Frames	Full height; 2 1/4" (51 mm) depth to mesh.
Construction	Polished and lacquered brass with S.S. mesh.
Nameplates	Show standard, alternate and Tyler Screen Scale equivalent designations.
Weights	Net 1 lb. (453 g).
Sieve Size or Number	No. 40
Sieve Opening Standard	425 um
Sieve Opening Alternative (in.)	0.0165



8in Dia ASTM Sieve 250 Mic Stainless Steel Mesh.

Code: 79-5190

Product Group: 8in Dia ASTM Brass Sieves, 8" Diameter ASTM Sieves, 8" Diameter ASTM Sieves, 8" Diameter ASTM Sieves

Standards

ASTM E11

Specification

Frames	Full height; 2 1/4" (51 mm) depth to mesh.
Construction	Polished and lacquered brass with S.S. mesh.
Nameplates	Show standard, alternate and Tyler Screen Scale equivalent designations.
Weights	Net 1 lb. (453 g).
Sieve Size or Number	No. 60
Sieve Opening Standard	250 um
Sieve Opening Alternative (in.)	0.0098



8in Dia ASTM Sieve 106 Mic Stainless Steel Mesh.

Code: 79-5240

Product Group: 8in Dia ASTM Brass Sieves, 8" Diameter ASTM Sieves, 8" Diameter ASTM Sieves, 8" Diameter ASTM Sieves

Standards

ASTM E11

Specification

Frames	Full height; 2 1/4" (51 mm) depth to mesh.
Construction	Polished and lacquered brass with S.S. mesh.
Nameplates	Show standard, alternate and Tyler Screen Scale equivalent designations.
Weights	Net 1 lb. (453 g).
Sieve Size or Number	No. 140
Sieve Opening Standard	106 µm
Sieve Opening Alternative (in.)	0.0041



8in Dia ASTM Sieve 75 Mic Stainless Steel Mesh.

Code: 79-5260

Product Group: 8in Dia ASTM Brass Sieves, 8" Diameter ASTM Sieves, 8" Diameter ASTM Sieves, 8" Diameter ASTM Sieves

Standards

ASTM E11

Specification

Frames	Full height; 2 1/4" (51 mm) depth to mesh.
Construction	Polished and lacquered brass with S.S. mesh.
Nameplates	Show standard, alternate and Tyler Screen Scale equivalent designations.
Weights	Net 1 lb. (453 g).
Sieve Size or Number	No. 200
Sieve Opening Standard	75 um
Sieve Opening Alternative (in.)	0.0029



8 Inch Dia Lid.

Code: 79-5400

Product Group: Sieve Lids and Receivers ASTM, 8"
Diameter ASTM Sieves, 8" Diameter ASTM Sieves, 8"
Diameter ASTM Sieves

Standards

ASTM E11



8in Dia Receiver.

Code: 79-5410

Product Group: Sieve Lids and Receivers ASTM, 8"
Diameter ASTM Sieves, 8" Diameter ASTM Sieves, 8"
Diameter ASTM Sieves

Standards

ASTM E11



8in Dia ASTM Sieve 9.50mm Stainless Steel Mesh.

Code: 79-5510

Product Group: 8in Dia ASTM Brass Sieves, 8" Diameter ASTM Sieves, 8" Diameter ASTM Sieves, 8" Diameter ASTM Sieves

Standards

ASTM E11

Specification

Frames	Full height; 2 1/8" (51 mm) depth to mesh.
Construction	Polished and lacquered brass with S.S. mesh.
Nameplates	Show standard, alternate and Tyler Screen Scale equivalent designations.
Weights	Net 1 lb. (453 g).
Sieve Size or Number	3/8"
Sieve Opening Standard	9.5 mm
Sieve Opening Alternative (in.)	0.375



8in Dia ASTM Sieve 19.0mm Stainless Steel Mesh.

Code: 79-5560

Product Group: 8in Dia ASTM Brass Sieves, 8" Diameter ASTM Sieves, 8" Diameter ASTM Sieves, 8" Diameter ASTM Sieves

Standards

ASTM E11

Specification

Frames	Full height; 2 1/4" (51 mm) depth to mesh.
Construction	Polished and lacquered brass with S.S. mesh.
Nameplates	Show standard, alternate and Tyler Screen Scale equivalent designations.
Weights	Net 1 lb. (453 g).
Sieve Size or Number	3/4"
Sieve Opening Standard	19.0 mm
Sieve Opening Alternative (in.)	0.75



8in Dia ASTM Sieve 37.5mm Stainless Steel Mesh.

Code: 79-5610

Product Group: 8in Dia ASTM Brass Sieves, 8" Diameter ASTM Sieves, 8" Diameter ASTM Sieves, 8" Diameter ASTM Sieves

Standards

ASTM E11

Specification

Frames	Full height; 2 1/2" (51 mm) depth to mesh.
Construction	Polished and lacquered brass with S.S. mesh.
Nameplates	Show standard, alternate and Tyler Screen Scale equivalent designations.
Weights	Net 1 lb. (453 g).
Sieve Size or Number	1-1/2"
Sieve Opening Standard	38.1 mm
Sieve Opening Alternative (in.)	1.5



8in Dia ASTM Sieve 50.0mm Stainless Steel Mesh.

Code: 79-5630

Product Group: 8in Dia ASTM Brass Sieves, 8" Diameter ASTM Sieves, 8" Diameter ASTM Sieves, 8" Diameter ASTM Sieves

Standards

ASTM E11

Specification

Frames	Full height; 2 1/4" (51 mm) depth to mesh.
Construction	Polished and lacquered brass with S.S. mesh.
Nameplates	Show standard, alternate and Tyler Screen Scale equivalent designations.
Weights	Net 1 lb. (453 g).
Sieve Size or Number	2"
Sieve Opening Standard	50 mm
Sieve Opening Alternative (in.)	2



8in Dia ASTM Sieve 75.0mm Stainless Steel Mesh.

Code: 79-5660

Product Group: 8in Dia ASTM Brass Sieves, 8" Diameter ASTM Sieves, 8" Diameter ASTM Sieves, 8" Diameter ASTM Sieves

Standards

ASTM E11

Specification

Frames	Full height; 2 1/4" (51 mm) depth to mesh.
Construction	Polished and lacquered brass with S.S. mesh.
Nameplates	Show standard, alternate and Tyler Screen Scale equivalent designations.
Weights	Net 1 lb. (453 g).
Sieve Size or Number	3"
Sieve Opening Standard	75 mm
Sieve Opening Alternative (in.)	3



Sieve Brush Brass and Nylon

Code: [79-7200](#)

Product Group: [Sieve Brushes](#)

Double-ended, brass and nylon bristle

Standards

ASTM E11

Further Information

NOT AVAILABLE FOR SALE IN THE USA



ELE Sieve Shaker

Code: 80-0200/01

Product Group: ELE Sieve Shaker

The ELE sieve shaker is powered by an electromagnetic drive that has no rotating parts to wear making it maintenance free and extremely quiet in operation.

The unit features a triple Vertical-Lateral-Rotary vibrating action that moves the sample over the sieve producing faster more efficient sieving, while the rapid vertical movements also help keep the apertures from blinding.

The shaker is ideal for laboratory or on site use. It is robust, compact and sufficiently lightweight to be portable. The separate digital microprocessor controlled console unit incorporates a keypad for setting the sieving program and is isolated from any effects of vibration from the shaker.

As standard the shaker includes, timer 0-999 minutes, adjustable vibration intensity and adjustable intermittent or continuous operation.

Further Information

****NOT AVAILABLE FOR SALE IN THE USA****

The unit accepts up to ten 200 mm or 8 inch, full height, diameter sieves and lid and receiver, or up to six 300 mm or 12 inch diameter sieves and lid and receiver. Complete as specified. Dimensions (l x w x h) 380 x 440 x 1085 mm. For 220 - 240 V AC, 50 Hz 1ph.



Vernier Caliper Range 0 to 200mm X 0.02mm.

Code: [81-0588](#)

Product Group: [Determination of the Shape Index, Linear Shrinkage, Miscellaneous Laboratory Hardware](#)

Vernier callipers 200 x 0.002mm. Graduated in mm and inches.

Gives four types of readings: inside, outside, depth and step. Dual reading scale (metric and inch) with 14° bevelled vernier scale for reduced parallax reading error and knurled locking nut. Manufactured from hardened stainless steel for rigidity. Satin finish.

Conforms to DIN 862.

Standards

EN 933-4, BS 1377



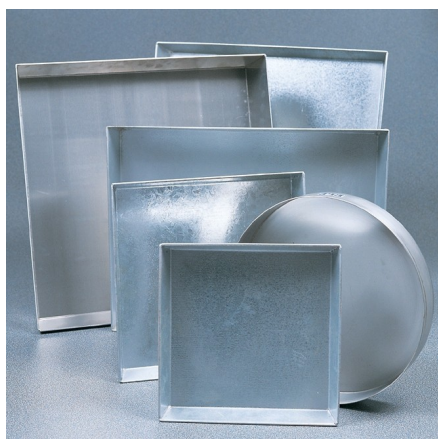
Wire Brush

Code: [81-0705](#)

Product Group: [Accessories for Concrete Moulds](#),
[Miscellaneous Laboratory Hardware](#)

Further Information

****Not available for sale in the USA****



Sample Tray - 910 x 910 x 76 mm

Code: [81-4160](#)

Product Group: [Sample Trays](#)

Further Information

****NOT AVAILABLE FOR SALE IN THE USA****



Beaker - 600 ml

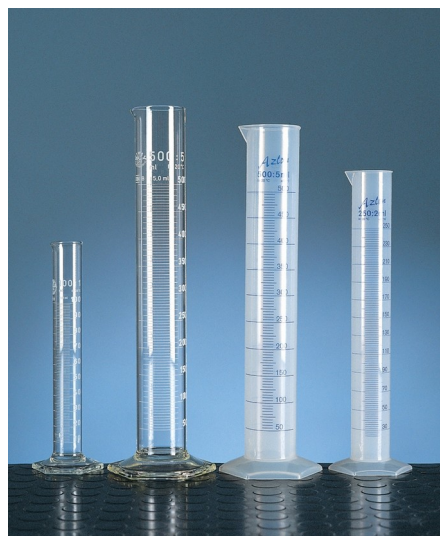
Code: [82-0200](#)

Product Group: [Beakers and Covers](#)

Borosilicate glass, squat form.

Further Information

****NOT AVAILABLE FOR SALE IN THE USA****



Measuring Cylinder - Glass 1000 ml

Code: [82-0500](#)

Product Group: [Measuring Cylinders, BS](#)

Soda glass, spouted, BS EN 4788.

Further Information

****NOT AVAILABLE FOR SALE IN THE USA****



Hydrometer

Code: [82-3510](#)

Product Group: [Hydrometers, Aggregate Testing, Soundness of Aggregates](#)

Type L50, ASTM C 88 graduated 1150 to 1200 relative density (used with magnesium sulphate method).

Standards

BS 812, EN 1367-2, ASTM C88, AASHTO T104

Further Information

****NOT AVAILABLE FOR SALE IN THE USA****



Digital Stopwatch

Code: [88-4340](#)

Product Group: [Digital Stopwatch](#), [Bitumen Penetration Test](#)

Specification

Operation	Start-stop and lap split-reset push-buttons.
Time Range	Display up to 9 hours, 59 minutes, 59.99 seconds in 0.01 second increments.
Weight	4 oz. (227 g).