



IF IT'S WORTH BUILDING, IT'S WORTH TESTING

This wishlist was generated on 27/01/2020, and contains the following Products:

24-0410

**Liquid Limit Device BS with Counter. C/W Metal Grooving Tool & Test Gauge.**

24-0425

**Grooving Tool and Gauge B.S.**

24-0430

**Glass Plate.**

24-4125/01

**High Speed Stirrer Complete with Paddle Cup & Baffle. 220-240V 50/60Hz 1Ph.**

24-4145

**Sodium Hexametaphosphate 500G.**

24-4640

**Soil Hydrometer Type 152H ASTM/Aashto Graduated -5 to + 60G/Litre.**

24-4650

**Soil Hydrometer Type 151H ASTM D422 Graduated 0.995 to 1.038 Specific Gravity.**

24-4700

**Hydrometer Sedimentation Cylinder**

24-4865/01

**Constant Temperature Bath 5 to 99.9 Deg.C X 0.1 Deg.C with Led Display and False Base Support.**

79-5020

**8in Dia ASTM Sieve 4.75mm Stainless Steel Mesh.**

79-5070

**8in Dia ASTM Sieve 2.0mm Stainless Steel Mesh.**

79-5120

**8in Dia ASTM Sieve 850 Mic Stainless Steel Mesh.**

79-5160

**8in Dia ASTM Sieve 425 Mic Stainless Steel Mesh.**

79-5190

**8in Dia ASTM Sieve 250 Mic Stainless Steel Mesh.**

---

79-5240

**8in Dia ASTM Sieve 106 Mic Stainless Steel Mesh.**

---

79-5260

**8in Dia ASTM Sieve 75 Mic Stainless Steel Mesh.**

---

79-5400

**8 Inch Dia Lid.**

---

79-5410

**8in Dia Receiver.**

---

79-5510

**8in Dia ASTM Sieve 9.50mm Stainless Steel Mesh.**

---

79-5560

**8in Dia ASTM Sieve 19.0mm Stainless Steel Mesh.**

---

79-5610

**8in Dia ASTM Sieve 37.5mm Stainless Steel Mesh.**

---

79-5630

**8in Dia ASTM Sieve 50.0mm Stainless Steel Mesh.**

---

79-5660

**8in Dia ASTM Sieve 75.0mm Stainless Steel Mesh.**

---

79-7200

**Sieve Brush Brass and Nylon**

---

80-0200/01

**ELE Sieve Shaker**

---

82-0200

**Beaker - 600 ml**

---

82-0500

**Measuring Cylinder - Glass 1000 ml**

---

82-3505

**Hydrometer**

---

# Contents

[www.ele.com](http://www.ele.com)  
+44 (0) 01525 249 200



82-3510

**Hydrometer**

---

88-4340

**Digital Stopwatch**

---



## Liquid Limit Device BS with Counter. C/W Metal Grooving Tool & Test Gauge.

Code: [24-0410](#)

Product Group: [Casagrande Method](#)

With revolution counter. Complete with metal grooving tool and test gauge.

## Standards

BS 1377-2



## Grooving Tool and Gauge B.S.

Code: [24-0425](#)

Product Group: [Casagrande Method](#)

Constructed to British Standards.

## Standards

BS 1377-2



## Glass Plate.

Code: [24-0430](#)

Product Group: [Casagrande Method, Determination of Plastic Limit](#)

500 mm square x 10 mm thick.

## Standards

BS 1377-2



## High Speed Stirrer Complete with Paddle Cup & Baffle. 220-240V 50/60Hz 1Ph.

Code: [24-4125/01](#)

Product Group: [Mechanical Analysis Stirrer](#)

Compact bench top stirrer used for dispersing soil samples in water. Supplied complete with mixing paddle and dispersion cup with baffle. Beaker position maintained by column retainer.

## Standards

BS 1377, ASTM D422, AASHTO T88





## Sodium Hexametaphosphate 500G.

Code: [24-4145](#)

Product Group: [Sodium Hexametaphosphate,](#)  
[Mechanical Analysis Stirrer](#)

## Standards

ASTM D422, AASHTO T88, ASTM E100



## Soil Hydrometer Type 152H ASTM/Aashto Graduated -5 to + 60G/Litre.

Code: [24-4640](#)

Product Group: [ASTM Soil Hydrometers, Soil Hydrometers](#)

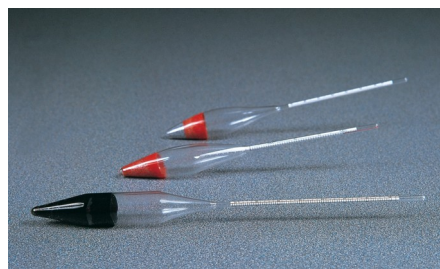
Graduated -5 to +60 g/litre.

## Standards

BS 1377, EN 1997-2, ASTM D422, ASTM E100, AASHTO T88

## Specification

Construction	Molded, seamless.
Scale	Bouyoucos; double scale.
Calibration	At 68°F.
Weight	Net 4 oz. (113 g).



## Soil Hydrometer Type 151H ASTM D422 Graduated 0.995 to 1.038 Specific Gravity.

Code: [24-4650](#)

Product Group: [ASTM Soil Hydrometers, Soil Hydrometers](#)

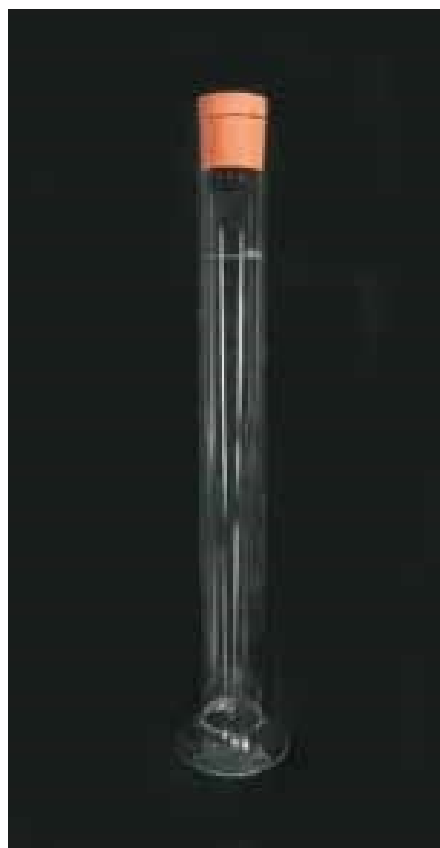
Graduated 0.995 to 1.038 g/ml.

## Standards

ASTM D422, ASTM E100, AASHTO T88

## Specification

Construction	Molded, seamless.
Scale	Bouyoucos; double scale.
Calibration	At 68°F.
Weight	Net 4 oz. (113 g).



## Hydrometer Sedimentation Cylinder

Code: [24-4700](#)

Product Group: [Hydrometer Sedimentation Cylinder](#),  
[Hydrometer Jar](#)

Glass, 1000 ml capacity complete with rubber bung.

## Standards

BS 1337, ASTM D422, AASHTO T88

## Further Information

1000ML Glass



## Constant Temperature Bath 5 to 99.9 Deg.C X 0.1 Deg.C with Led Display and False Base Support.

Code: [24-4865/01](#)

Product Group: [Constant Temperature Bath](#)

- Specially designed for Sedimentation of Testing of Soils
- Stainless steel construction with toughened glass front for viewing samples
- Must hold six sedimentation cylinders
- Complies to: BS 1377-2 EN DD ENV1997-2 ASTM D422 AASHTO T88

## Further Information

Specially designed for the sedimentation testing of soils and other fine grained material, the bath is supplied with a false bottom to assist in circulation of the bath liquid. Will accommodate six Sedimentation Cylinders.

## Specification

Dimensions (l x w x h)	535 x 210 x 610 mm external
Capacity	Holds up to 6 sedimentation cylinders
Construction	Stainless steel with toughened glass front
Temperature Control	Heater/thermostat/circulation with digital controller unit 5 to 99.9 Deg.C X 0.1 Deg.C
Power	1500 watts
Weight kg	12



## 8in Dia ASTM Sieve 4.75mm Stainless Steel Mesh.

Code: 79-5020

Product Group: 8in Dia ASTM Brass Sieves, 8" Diameter ASTM Sieves, 8" Diameter ASTM Sieves, 8" Diameter ASTM Sieves

## Standards

ASTM E11

## Specification

Frames	Full height; 2 1/4" (51 mm) depth to mesh.
Construction	Polished and lacquered brass with S.S. mesh.
Nameplates	Show standard, alternate and Tyler Screen Scale equivalent designations.
Weights	Net 1 lb. (453 g).
Sieve Size or Number	No. 4
Sieve Opening Standard	4.75 mm
Sieve Opening Alternative (in.)	0.187



## 8in Dia ASTM Sieve 2.0mm Stainless Steel Mesh.

Code: 79-5070

Product Group: 8in Dia ASTM Brass Sieves, 8" Diameter ASTM Sieves, 8" Diameter ASTM Sieves, 8" Diameter ASTM Sieves

## Standards

ASTM E11

## Specification

Frames	Full height; 2 1/4" (51 mm) depth to mesh.
Construction	Polished and lacquered brass with S.S. mesh.
Nameplates	Show standard, alternate and Tyler Screen Scale equivalent designations.
Weights	Net 1 lb. (453 g).
Sieve Size or Number	No. 10
Sieve Opening Standard	2.00 mm
Sieve Opening Alternative (in.)	0.0787



## 8in Dia ASTM Sieve 850 Mic Stainless Steel Mesh.

Code: 79-5120

Product Group: 8in Dia ASTM Brass Sieves, 8" Diameter ASTM Sieves, 8" Diameter ASTM Sieves, 8" Diameter ASTM Sieves

## Standards

ASTM E11

## Specification

Frames	Full height; 2 1/4" (51 mm) depth to mesh.
Construction	Polished and lacquered brass with S.S. mesh.
Nameplates	Show standard, alternate and Tyler Screen Scale equivalent designations.
Weights	Net 1 lb. (453 g).
Sieve Size or Number	No. 20
Sieve Opening Standard	850 um
Sieve Opening Alternative (in.)	0.331





## 8in Dia ASTM Sieve 425 Mic Stainless Steel Mesh.

Code: 79-5160

Product Group: 8in Dia ASTM Brass Sieves, 8" Diameter ASTM Sieves, 8" Diameter ASTM Sieves, 8" Diameter ASTM Sieves

## Standards

ASTM E11

## Specification

Frames	Full height; 2 1/4" (51 mm) depth to mesh.
Construction	Polished and lacquered brass with S.S. mesh.
Nameplates	Show standard, alternate and Tyler Screen Scale equivalent designations.
Weights	Net 1 lb. (453 g).
Sieve Size or Number	No. 40
Sieve Opening Standard	425 um
Sieve Opening Alternative (in.)	0.0165



## 8in Dia ASTM Sieve 250 Mic Stainless Steel Mesh.

Code: 79-5190

Product Group: 8in Dia ASTM Brass Sieves, 8" Diameter ASTM Sieves, 8" Diameter ASTM Sieves, 8" Diameter ASTM Sieves

## Standards

ASTM E11

## Specification

Frames	Full height; 2 1/4" (51 mm) depth to mesh.
Construction	Polished and lacquered brass with S.S. mesh.
Nameplates	Show standard, alternate and Tyler Screen Scale equivalent designations.
Weights	Net 1 lb. (453 g).
Sieve Size or Number	No. 60
Sieve Opening Standard	250 um
Sieve Opening Alternative (in.)	0.0098



## 8in Dia ASTM Sieve 106 Mic Stainless Steel Mesh.

Code: 79-5240

Product Group: 8in Dia ASTM Brass Sieves, 8" Diameter ASTM Sieves, 8" Diameter ASTM Sieves, 8" Diameter ASTM Sieves

## Standards

ASTM E11

## Specification

Frames	Full height; 2 1/4" (51 mm) depth to mesh.
Construction	Polished and lacquered brass with S.S. mesh.
Nameplates	Show standard, alternate and Tyler Screen Scale equivalent designations.
Weights	Net 1 lb. (453 g).
Sieve Size or Number	No. 140
Sieve Opening Standard	106 um
Sieve Opening Alternative (in.)	0.0041



## 8in Dia ASTM Sieve 75 Mic Stainless Steel Mesh.

Code: 79-5260

Product Group: 8in Dia ASTM Brass Sieves, 8" Diameter ASTM Sieves, 8" Diameter ASTM Sieves, 8" Diameter ASTM Sieves

## Standards

ASTM E11

## Specification

Frames	Full height; 2 1/4" (51 mm) depth to mesh.
Construction	Polished and lacquered brass with S.S. mesh.
Nameplates	Show standard, alternate and Tyler Screen Scale equivalent designations.
Weights	Net 1 lb. (453 g).
Sieve Size or Number	No. 200
Sieve Opening Standard	75 um
Sieve Opening Alternative (in.)	0.0029



## 8 Inch Dia Lid.

Code: [79-5400](#)

Product Group: [Sieve Lids and Receivers ASTM, 8" Diameter ASTM Sieves, 8" Diameter ASTM Sieves, 8" Diameter ASTM Sieves](#)

## Standards

ASTM E11



## 8in Dia Receiver.

Code: 79-5410

Product Group: Sieve Lids and Receivers ASTM, 8"  
Diameter ASTM Sieves, 8" Diameter ASTM Sieves, 8"  
Diameter ASTM Sieves

## Standards

ASTM E11



## 8in Dia ASTM Sieve 9.50mm Stainless Steel Mesh.

Code: 79-5510

Product Group: 8in Dia ASTM Brass Sieves, 8" Diameter ASTM Sieves, 8" Diameter ASTM Sieves, 8" Diameter ASTM Sieves

## Standards

ASTM E11

## Specification

Frames	Full height; 2 1/8" (51 mm) depth to mesh.
Construction	Polished and lacquered brass with S.S. mesh.
Nameplates	Show standard, alternate and Tyler Screen Scale equivalent designations.
Weights	Net 1 lb. (453 g).
Sieve Size or Number	3/8"
Sieve Opening Standard	9.5 mm
Sieve Opening Alternative (in.)	0.375



## 8in Dia ASTM Sieve 19.0mm Stainless Steel Mesh.

Code: 79-5560

Product Group: 8in Dia ASTM Brass Sieves, 8" Diameter ASTM Sieves, 8" Diameter ASTM Sieves, 8" Diameter ASTM Sieves

## Standards

ASTM E11

## Specification

Frames	Full height; 2 1/4" (51 mm) depth to mesh.
Construction	Polished and lacquered brass with S.S. mesh.
Nameplates	Show standard, alternate and Tyler Screen Scale equivalent designations.
Weights	Net 1 lb. (453 g).
Sieve Size or Number	3/4"
Sieve Opening Standard	19.0 mm
Sieve Opening Alternative (in.)	0.75





## 8in Dia ASTM Sieve 37.5mm Stainless Steel Mesh.

Code: 79-5610

Product Group: 8in Dia ASTM Brass Sieves, 8" Diameter ASTM Sieves, 8" Diameter ASTM Sieves, 8" Diameter ASTM Sieves

## Standards

ASTM E11

## Specification

Frames	Full height; 2 1/2" (51 mm) depth to mesh.
Construction	Polished and lacquered brass with S.S. mesh.
Nameplates	Show standard, alternate and Tyler Screen Scale equivalent designations.
Weights	Net 1 lb. (453 g).
Sieve Size or Number	1-1/2"
Sieve Opening Standard	38.1 mm
Sieve Opening Alternative (in.)	1.5



## 8in Dia ASTM Sieve 50.0mm Stainless Steel Mesh.

Code: 79-5630

Product Group: 8in Dia ASTM Brass Sieves, 8" Diameter ASTM Sieves, 8" Diameter ASTM Sieves, 8" Diameter ASTM Sieves

## Standards

ASTM E11

## Specification

Frames	Full height; 2 1/4" (51 mm) depth to mesh.
Construction	Polished and lacquered brass with S.S. mesh.
Nameplates	Show standard, alternate and Tyler Screen Scale equivalent designations.
Weights	Net 1 lb. (453 g).
Sieve Size or Number	2"
Sieve Opening Standard	50 mm
Sieve Opening Alternative (in.)	2



## 8in Dia ASTM Sieve 75.0mm Stainless Steel Mesh.

Code: 79-5660

Product Group: 8in Dia ASTM Brass Sieves, 8" Diameter ASTM Sieves, 8" Diameter ASTM Sieves, 8" Diameter ASTM Sieves

## Standards

ASTM E11

## Specification

Frames	Full height; 2 1/4" (51 mm) depth to mesh.
Construction	Polished and lacquered brass with S.S. mesh.
Nameplates	Show standard, alternate and Tyler Screen Scale equivalent designations.
Weights	Net 1 lb. (453 g).
Sieve Size or Number	3"
Sieve Opening Standard	75 mm
Sieve Opening Alternative (in.)	3



## Sieve Brush Brass and Nylon

Code: [79-7200](#)

Product Group: [Sieve Brushes](#)

Double-ended, brass and nylon bristle

## Standards

ASTM E11

## Further Information

**\*\*NOT AVAILABLE FOR SALE IN THE USA\*\***



## ELE Sieve Shaker

Code: 80-0200/01

Product Group: ELE Sieve Shaker

The ELE sieve shaker is powered by an electromagnetic drive that has no rotating parts to wear making it maintenance free and extremely quiet in operation.

The unit features a triple Vertical-Lateral-Rotary vibrating action that moves the sample over the sieve producing faster more efficient sieving, while the rapid vertical movements also help keep the apertures from blinding.

The shaker is ideal for laboratory or on site use. It is robust, compact and sufficiently lightweight to be portable. The separate digital microprocessor controlled console unit incorporates a keypad for setting the sieving program and is isolated from any effects of vibration from the shaker.

As standard the shaker includes, timer 0-999 minutes, adjustable vibration intensity and adjustable intermittent or continuous operation.

## Further Information

**\*\*NOT AVAILABLE FOR SALE IN THE USA\*\***

The unit accepts up to ten 200 mm or 8 inch, full height, diameter sieves and lid and receiver, or up to six 300 mm or 12 inch diameter sieves and lid and receiver. Complete as specified. Dimensions (l x w x h) 380 x 440 x 1085 mm. For 220 - 240 V AC, 50 Hz 1ph.



## Beaker - 600 ml

Code: [82-0200](#)

Product Group: [Beakers and Covers](#)

Borosilicate glass, squat form.

## Further Information

**\*\*NOT AVAILABLE FOR SALE IN THE USA\*\***



## Measuring Cylinder - Glass 1000 ml

Code: [82-0500](#)

Product Group: [Measuring Cylinders, BS](#)

Soda glass, spouted, BS EN 4788.

## Further Information

**\*\*NOT AVAILABLE FOR SALE IN THE USA\*\***



## Hydrometer

Code: [82-3505](#)

Product Group: [Hydrometers, Aggregate Testing, Soundness of Aggregates](#)

Type L50, ASTM C 88 graduated 1150 to 1200 relative density (used with sodium sulphate method).

## Standards

BS 812, EN 1367-2, ASTM C88, AASHTO T104, BS 7188

## Further Information

**\*\*NOT AVAILABLE FOR SALE IN THE USA\*\***





## Hydrometer

Code: [82-3510](#)

Product Group: [Hydrometers, Aggregate Testing, Soundness of Aggregates](#)

Type L50, ASTM C 88 graduated 1150 to 1200 relative density (used with magnesium sulphate method).

## Standards

BS 812, EN 1367-2, ASTM C88, AASHTO T104

## Further Information

**\*\*NOT AVAILABLE FOR SALE IN THE USA\*\***



## Digital Stopwatch

Code: [88-4340](#)

Product Group: [Digital Stopwatch](#), [Bitumen Penetration Test](#)

## Specification

Operation

Start-stop and lap split-reset push-buttons.

Time Range

Display up to 9 hours, 59 minutes, 59.99 seconds in 0.01 second increments.

Weight

4 oz. (227 g).