



IF IT'S WORTH BUILDING, IT'S WORTH TESTING

This wishlist was generated on 09/04/2020, and contains the following Products:

---

34-0150

**Slump Cone Base**

---

34-0160

**Base Plate for Slump Test.**

---

34-0180

**Slump Cone Funnel**

---

34-0450

**Apparatus for Determining Flow In Concrete (Flow Table).**

---

34-0580

**K-slump Tester**

---

36-3280/01

**ADR Touch SOLO 2000 BS EN Compression Machine with Digital Readout and Self Centring Platens.**

---

36-5150/01

**ADR Touch Control PRO 2000 Auto BS EN Compression Machine**

---

38-2015/01

**Automatic Vicat Apparatus**

---

38-2695

**Pocket Concrete Penetrometer**

---

42-2952

**Quantab Chloride Titrator Strips Type 1176 Titration Range 0.05%-1% (300-6000 ppm) NaCl Pack of 40**

---

81-0220

**Aluminium Scoop Large**

---



## Slump Cone Base

Code: [34-0150](#)

Product Group: [Slump Cones](#), [Slump Cone Base](#)

## Standards

ASTM C143/C143M, ASTM C192, AASHTO T23, AASHTO T119, ASTM T126

## Specification

Construction	Cast aluminium with cast-in cleats on underside.
Clamps	Cast aluminium; swivel mounting.
Handle	Cast aluminium; swivel type.
Dimensions	15" w x 15" l. (381 x 381 mm) without handle.
Weight	Net 9 lbs (4.1 kg)

## Accessories



## Cement Pan

Code: [34-0152](#)



## Graduated Tamping Rod

Code: [34-0132](#)



## Slump Cone Funnel

Code: [34-0180](#)

---

## Alternatives



## Cement Pan

Code: [34-0152](#)



## Graduated Tamping Rod

Code: [34-0132](#)



## Slump Cone Funnel

Code: [34-0180](#)



## Base Plate for Slump Test.

Code: [34-0160](#)

Product Group: [Slump Test](#)

Complies to EN 12350-2 (BS 1881-102)

## Further Information

**\*\*NOT AVAILABLE FOR SALE IN THE USA\*\***



## Slump Cone Funnel

Code: 34-0180

Product Group: Concrete Mixture Pre-Qualification, Portable Slump Test Set, Slump Test, Slump Test Set, Slump Cones

Complies to EN 12350-2 (BS 1881-102)

## Accessories



## Slump Cone Base

Code: 34-0150

## Alternatives



## Slump Cone Base

Code: 34-0150





## Apparatus for Determining Flow In Concrete (Flow Table).

Code: [34-0450](#)

Product Group: [Flow Table](#)

Comprising of mould, flow table, tamper, metre rule, float and stopwatch

## Standards

EN 12350-5

## Further Information

**\*\*NOT AVAILABLE FOR SALE IN THE USA\*\***

## Accessories



### Aluminium Scoop Large

Code: [81-0220](#)



### Compacting Bar 25mm Sq X 380mm

Code: [34-2910](#)



### Sample Tray - 1200 x 1160 x 50 mm

Code: [81-4230](#)



## Shovel - With flat blade

Code: [81-0240](#)

## Spares/Consumables



## Stopwatch

Code: [81-0521](#)





## K-Slump Tester

Code: 34-0580

Product Group: K-Slump Tester, K-Slump Tester

- Simple and economical to use.
- Reduces testing time.
- No special calibration required.
- Plated for rust resistance and long life.

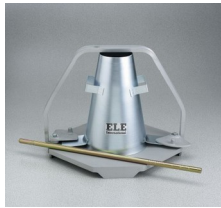
The K-Slump Tester was developed to determine the slump and workability of fresh concrete. The device can be used for in-place measurements and for measurements inside test moulds and forms. The device is used as an indicator to correlate to the standard slump test. In operation, the K-Slump Tester is made wet and inserted into the concrete for 40 seconds. The K-Slump reading is then taken on the scale to the height that the concrete has penetrated the tester. The tester is then removed from the concrete vertically and the workability reading is taken on the scale at the height of concrete retained in the tester. After the readings, the unit is easily cleaned with water.

Developed to determine the workability of fresh concrete and the degree of concrete compaction placed in formwork. The apparatus can be used for in-place measurements of concrete in test moulds and forms and may be correlated to the standard slump test. It is simple, economical to use and reduces testing time. No special calibration is required.

## Specification

Construction	Nickel Plated Steel. Calibrated 3/4" (19 mm) diam. Hollow tube; pointed insertion end; round disc controls depth of penetration.
Openings	Two groups through which concrete enters.
Test time	60 seconds
Weight	450 g

## Alternatives



## Portable Slump Test Set

Code: [EL3010E](#)



## Slump Test Set

Code: [EL3020E](#)



## ADR Touch SOLO 2000 BS EN Compression Machine with Digital Readout and Self Centring Platens.

Code: 36-3280/01

Product Group: BS EN Compression Machines

The ADR Touch range of 2000 kN and 3000 kN capacity compression machines has been designed to meet the need for reliable and consistent testing. The load frame is a welded steel fabrication carrying the ball-seated upper platen. Positively located on the loading ram, which is protected from debris by a flexible cover, the lower platen is marked for the centring of cube and cylinder specimens. Self-centring lower platens for cube location are supplied as standard on EN machines and are available as an optional extra on the standard machine. The two machines for cube testing to EN standards are assembled and aligned using a special compression frame stability tester.

The dimensions of the frame allow the testing of concrete cylinders up to 320 mm long x 160 mm diameter, 150 and 100 mm square cubes, and on EN/BS machines, 200 mm square cubes. Kerbs and flagstones may also be tested on ADR machines as well as 150 mm and 100 mm square section beams to ASTM C78 using the optional 100 kN flexural frames which are connected to the power pack.

## Standards

EN 12350-6, NF P18-411

## Further Information

**\*\*Not available for sale in the USA\*\***

ADR Touch BS EN 2000 and 3000 kN compression machines are supplied complete with self-centring lower platen and safety gates fitted with interlock switches ready for testing 300 x 150 mm diameter cylinders.

Whilst delivering all the features and reputation of the established ADR Series with its extensive design history, the new and improved user interface provides a high quality platform for testing that enhances the performance of ELE's compression machines.

New, sophisticated electronics further the benefits of simplified operation, whilst delivering the highest levels of accuracy in testing concrete and cement/mortar samples, satisfying the needs of Quality Control Managers, Lab Managers and Technicians.

## ACCURACY & SAVINGS

The new ADR Touch Series, with 145mm (5.7") high resolution QVGA touch screen interface and intuitive menu-driven operation, reduces the time taken to set up the machine and perform tests, reducing the time to train staff by up to 25%.

- Up to 6 sample types can be set as favorites, enabling one-touch set up for repeat testing.
- Full, QWERTY touch pad for input of test data.

Most testing errors produce lower strength results. Noncompliant loading rates can generate errors in measured strength. The user interface includes real-time display of load vs. time, further ensuring accurate and consistent test results and providing "goodness of test" data to improve traceability in your QC operations.

## TRACEABILITY & DATA QUALITY

The ADR range now provides improved data quality and traceability in due diligence cases - it is now possible to demonstrate traceability all the way from the machine/user to the accreditation body, increasing your reputation and peace of mind - all test results now come complete with the machine serial number attached.

- Enhanced USB data communications between PC and machine - eliminating the need for download software.
- Two gigabytes of storage memory.
- Full customization of sample sizes - stress calculations are automatically recalculated.

## USER SAFETY

With full safety gates as standard, total systems diagnostics, ram run-out switches and overload warnings ensure the safety of your employees and the reliability of your machine.

## Specification

Testing Standards	BS EN 12390-4, BS EN 12390-3, BS EN 12390-4, BS EN 12390-5, EN 12504-1, EN 1354, EN 1521, EN 3161, EN 1338, EN 772-6, EN 13286-41, BS 3892-3, BS 187, BS 6717, BS EN ISO 7500-1, ASTM E4
Capacity	2000 kN
Cubes (Concrete)	Up to 200 mm
Cylinders (Concrete)	Up to 160 x 320 mm
Blocks	Via optional Platen Handling System
Flexural Testing	Via Flexural Frame
TFV and ACV	Yes
Voltage Supply	220-240V 50/60 Hz 1Ph.
Frame Class (Stability)	Tested
Frame Type	Welded
Max vert. Clearance	340 mm
Max hor. Clearance	355 mm
Platen Sizes	Lower 220mm sq, Upper 300mm dia
Max Ram Travel	50 mm

## Accessories



## 100kN Flexural Fitting Kit (ADR) Used for Connecting Flexural Frames to ADR Compression Machines.

Code: [37-6138](#)



## 2000 kN Load Calibration Device complete with Handheld Readout Unit & Calibration Certificate ISO376

Code: [37-8315](#)



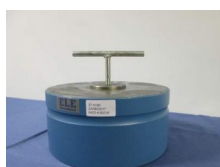
## ADR Touch Head for Compression Machines

Code: [37-5951/09](#)



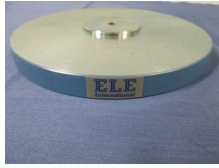
## BS/EN Standard Rectangular Platen

Code: [37-4860](#)



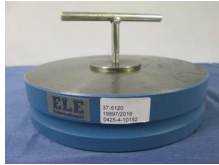
## EN 12390-3/4 Distance Piece - 100 mm Depth

Code: [37-5180](#)



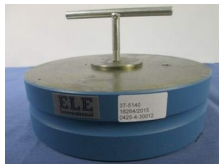
## EN 12390-3/4 Distance Piece - 20 mm Depth

Code: [37-5110](#)



## EN 12390-3/4 Distance Piece - 50 mm Depth

Code: [37-5120](#)



## EN 12390-3/4 Distance Piece - 60 mm Depth

Code: [37-5140](#)



## Extended Front Safety Gate for Use with 2000kN BS/EN Load Frames Fitted with Rectangular Platens.

Code: [37-4835](#)



## Impact Printer Rs232 Serial Connection. Supplied Complete with 1 Paper Roll.

Code: [37-4859/01](#)

## Spares/Consumables



## Pressure transducer, 0-700bar, 0.05 to 10v DC Output

Code: [6014A0062](#)



## Pressure transducer, 0-70bar, 0.05 to 10v DC Output

Code: [6014A0065](#)







## ADR Touch Control PRO 2000 Auto BS EN Compression Machine

Code: [36-5150/01](#)

Product Group: [BS EN Compression Machines](#)

The ADR Touch Control PRO 2000 Auto BS EN is supplied complete with self-centring lower platen and safety gates fitted with interlock switches ready for testing 320 x 160 mm diameter cylinders. When used for cube testing distance pieces (EN) of the appropriate size must be ordered separately.

Complies to EN 12390-4 (BS 1881-115), EN 12390-3 (BS 1881-116), EN 12504-1, EN 1354, EN 13286-41, EN 772-1, EN ISO 7500-1, ASTM E4.

## Standards

EN 12350-6

## Further Information

**\*\*Not available for sale in the USA\*\***

The ADR Touch Control PRO will deliver all the features and quality of the established ADR-Auto range, with its 20 year history, but with a new sleek design and additional capabilities. The console assembly consists of an ADR Touch Control Pro and power base which can be used with all existing concrete and cement frames

### USER INTERFACE

The new ADR Touch Control PRO has an improved user interface providing a high quality platform for testing that will enhance the performance of our compression machines. It now has a larger 7-inch colour touch screen with a higher definition display, allowing easier observation of test progress. A favourites option is also available, allowing users to save the most common set-ups for immediate access, without the need for navigating through selection menus.

### USER FLEXIBILITY

The ADR Touch Control PRO has a unique flexible head with rotation capabilities of 75-degrees and a 45-degree tilt, improving usability and comfort for individual users. It is available with four languages English, Spanish, Portuguese and French, making it even more user-friendly and accessible to a wider audience. The new LAN connectivity feature lets the operator use the PC based APP (ELE Logger) to download test results away from the test area. User flexibility has also increased with the new ADR Touch Control PRO as it can now be operated remotely, so tests can be initiated away from the test area. Many issues can be resolved quickly by our service team through the new remote diagnostics feature and updating to the latest version of software has never been easier.

### COMPATIBILITY

The all new dual sensor capabilities allow users to test both concrete and cement samples on one frame. The ADR Touch Control PRO is compatible with all existing compression frames and upgrade kits are also available. The upgrade kits can be used to convert existing ADR-Auto consoles to the new Automatic Digital Control Readout.

## TESTING TIMES

The new generation ADR Compression Machines have an increased control over the pace rate, which allows users to run the pace rate higher than average, but still within standard. This produces an average time saving of 10% for a typical 150mm cube sample.

## ELECTRICAL

Reduced component count and no wire design results in increased reliability and serviceability. New low voltage interlocks and e-stop has increased safety. The ADR Touch Control PRO has the latest Arm Core Processor technology which has improved the processing power and speed.

---

## Specification

Capacity	2000 kN
Cubes (Concrete)	Up to 200 mm
Cylinders (Concrete)	Up to 320 x 160 mm
Blocks	Via optional Platen Handling System
TFV and ACV	Yes
Voltage Supply	220-240 V 50 Hz 1 Ph
Frame Type	Welded
Max vert. Clearance	340 (360 mm without 20 mm Ram Space)
Max hor. Clearance	355 mm
Platen Sizes	Lower 220mm sq, Upper 300mm dia
Max Ram Travel	50 mm

---

## Accessories



### 100 kN Flexural Fitting Kit ADR Auto for 220 - 240 V AC, 50 Hz, 1 ph

Code: [37-6135/01](#)



### 100 kN Flexural Fitting Kit ADR Auto for 220 - 240 V AC, 60 Hz, 1 ph

Code: [37-6135/06](#)



## 2000 kN Load Calibration Device complete with Handheld Readout Unit & Calibration Certificate ISO376

Code: [37-8315](#)



## 300mm Lower Brick Platen

Code: [37-4842](#)



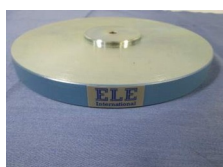
## BS Block Platens & Platen Handling Assembly for 2000kN & 3000kN BS Frames.

Code: [37-4830](#)



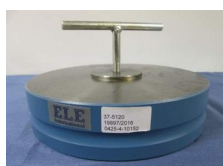
## EN 12390-3/4 Distance Piece - 100 mm Depth

Code: [37-5180](#)



## EN 12390-3/4 Distance Piece - 20 mm Depth

Code: [37-5110](#)



## EN 12390-3/4 Distance Piece - 50 mm Depth

Code: [37-5120](#)



## EN 12390-3/4 Distance Piece - 60 mm Depth

Code: [37-5140](#)



## Flexible Hose

Code: [5038B0027](#)



## Impact Printer Rs232 Serial Connection. Supplied Complete with 1 Paper Roll.

Code: [37-4859/01](#)

## Spares/Consumables



## Pressure transducer, 0-700bar, 0.05 to 10v DC Output

Code: [6014A0062](#)



## Pressure transducer, 0-70bar, 0.05 to 10v DC Output

Code: [6014A0065](#)

## Alternatives



## ADR Touch Control PRO 2000 Auto BS EN Compression Machine

Code: [36-5150/06](#)



## ADR Touch Control PRO 3000 Auto BS EN Compression Machine

Code: [36-5165/01](#)

---



## ADR Touch Control PRO 3000 Auto BS EN Compression Machine

Code: [36-5165/06](#)

---



## ADR Touch Control PRO 3000 BS EN Compression Machine complete with Remote Head

Code: [36-5265/01](#)

---



## Remote Head ADR Touch Control PRO 3000 BS EN Compression Machine

Code: [36-5265/06](#)



## Automatic Vicat Apparatus

Code: 38-2015/01

Product Group: Automatic Vicat

Complete with EN and ASTM Initial and Final needles, Consistency Plunger, Windows(R) software and RS232 cable, 1 x EN and ASTM Mould and Glass Plate. Suitable for continuous use in saturated humidity, at a controlled temperature of  $20^{\circ}\text{C} \pm 1^{\circ}\text{C}$ .

Complies to EN 13279-2 (GYPSUM), EN 480-2, ASTM C187, ASTM C191, DIN 1168, DIN 1196, NF P15-414, NF P15-431, AASHTO T131, EN 196-3

The results are printed on the incorporated printer and this eliminates the manual operations of installing and zeroing the paper graph on the drum. The use of the appliance is extremely simplified by the guiding menu that is available in english, french, spanish, german, italian language.

- Transfer each single control or function of the Vicat on the PC
- Verify in real time each phase of the test being made
- Automatically download the final results at the end of the test on all the connected Vicat
- Process and file at the same time all the tests without obliging the operator to move from his working place.

Additionally the firmware has many other functions detailed in the technical chart that will be transmitted to the user interested to know more about it.

## Standards

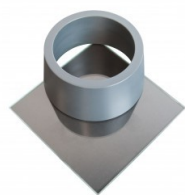
ASTM C187, ASTM C191

## Further Information

**\*\*NOT AVAILABLE FOR SALE IN THE USA\*\***

For 220 - 240 V AC, 50 - 60 Hz, 1 ph.

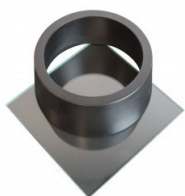
## Accessories



## ASTM Vicat Mould

Code: [38-2660](#)

---



## EN Vicat Mould

Code: [38-2300](#)

---



## Mould Tank

Code: [38-2015/15](#)

---



## Needle Cleaning Device

Code: [38-2015/12](#)

---



## Printer Paper Rolls

Code: [38-2015/14](#)

---



## Vicat Mould

Code: 38-2200



---

## Spares/Consumables

### ASTM Initial and Final Set Needle

Code: 38-2023



### Consistency Plunger

Code: 38-2015/16



### EN Initial and Final Set Needle

Code: 38-2021





## Pocket Concrete Penetrometer

Code: 38-2695

Product Group: Concrete Mortar Penetrometer, Concrete Mortar Penetrometer, Setting Time by Penetration Resistance

- Direct-Reading Scale From 0 To 700 Psi
- Indicator Sleeve Holds Reading Until

Released

- Lightweight Pocket-Size Design
- Includes Convenient Belt-Loop Style

Canvas Carrying Case

- Steel Shaft Needle With 1/20 Sq. In. Surface

Area

- Indicator Sleeve Holds Reading Until

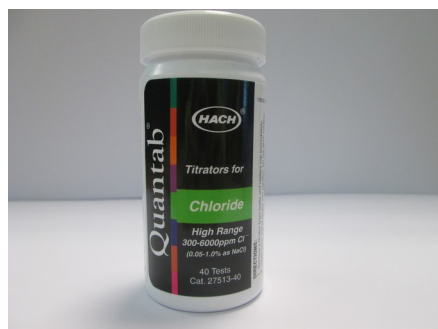
Released

## Standards

ASTM C187, ASTM C191, ASTM C780

## Specification

Needle	Steel shaft; 1/20 sq. in. surface area.
Range	0 to 700 psi.
Scale	Direct-reading; indicator sleeve holds reading until released.
Dimensions	3/4" (19 mm) diam. x 7" (178 mm) long.
Carrying Case	Canvas, with belt-loop.
Weight	Net 8 oz. (227 g).



## Quantab Chloride Titrator Strips Type 1176 Titration Range 0.05%-1% (300-6000 ppm) NaCl Pack of 40

Code: [42-2952](#)

Product Group: [Chloride Content: Rapid Method](#),  
[Chloride Content: Rapid Method](#)

Type 1176 titration range 0.05% to 1% (300 to 6000 ppm) NaCl. Pack of 40.



## Aluminium Scoop Large

Code: [81-0220](#)

Product Group: [Slump Test, Scoops and Shovels](#)

## Further Information

**\*\*Not available for sale in the USA\*\***