



IF IT'S WORTH BUILDING, IT'S WORTH TESTING

This wishlist was generated on 22/04/2020, and contains the following Products:

24-0434

**Liquid Limit Device ASTM/ Aashto Hand-Operated W/ Revolution Counter.  
Supplied Less Grooving Tool.**

24-0453

**ASTM Metal Grooving Tool.**

24-0461

**Casagrande Grooving Tool Aashto**

24-0545/01

**Semi-Automatic Cone Penetrometer**

24-4917

**Sand Equivalent Test Set**

24-9010

**Straight Edge 300mm.**

24-9063

**ASTM Compaction Rammer 2.5Kg.**

24-9070

**ASTM/Modified Proctor Compaction Rammer 4.5Kg.**

24-9150/01

**Cbr-Test 50 Machine 50kN Capacity BS and ASTM Supplied with Stabilising  
Bar.**

24-9182

**Penetration Piston**

24-9184

**Penetration/Swell Dial Gauge ASTM.**

24-9188

**Bracket and Adaptor. Dual Purpose Mounting Bracket for CBR Penetration  
Gauges EL24-9184/EL24-9186**

24-9228

**ASTM Cbr Mould Complete with Collar & Perforated Base**

24-9236

## ASTM Cutting Collar.

---

24-9238

## ASTM Spacing Disc.

---

24-9240

## Filter Screen 150mm Dia with 0.15mm Mesh.

---

24-9243

## 4.5Kg Annular Surcharge Weight ASTM.

---

24-9244

## 5Lb (2.27Kg) Split Surcharge Weight.

---

24-9250

## Filter Paper Equivalent to Whatman No 5 150mm Dia Box of 100.

---

24-9260

## Swell Plate

---

24-9262

## Swell Stand

---

25-0605

## Falling Head Permeability Cell.

---

25-0609

## Standpipe Panel.

---

25-0611

## De-Airing Tank.

---

25-0613

## Soaking Tank.

---

27-1300/01

## DSU Electronic Readout and Control System 220 - 240 V AC 50/60 Hz

---

27-1559

## 50kN S-type Load Cell

---

27-1705

## CBR Penetration Transducer 50mm Travel Fitted with 5 Pin Din Plug.

---

27-1798

**DS7.2 California Bearing Ratio (CBR) Penetration Program for Windows 7, 32/64 bit**

---

29-3720

**Dynamic Cone Penetrometer 8Kg Hammer (Trl Design).**

---

29-3800

**Plate Bearing Apparatus Complete. 500kN Capacity**

---

34-0192

**Slump Test Set BS & ASTM. C/W Slump Cone Base Plate Steel Rule Tamping Rod & Funnel.**

---

34-2910

**Compacting Bar 25mm Sq X 380mm**

---

34-6250/01

**Vibrating Table 600 X 400mm Table Top. 220-240V 50Hz 1Ph. Supplied with clamping assembly**

---

35-1480

**Standard Concrete Test Hammer**

---

35-1500

**Advanced SilverSchmidt Concrete Test Hammer (ST Version)**

---

36-3090/01

**ADR Touch SOLO 2000 Semi-Automatic Compression Machine with Digital Readout.**

---

37-5000

**Standard Distance Piece - 50 mm Depth**

---

37-5050

**Standard Distance Piece - 80 mm Depth**

---

37-5100

**Standard Distance Piece - 100 mm Depth**

---

37-6040

**50 kN Mini-Flexural Machine**

---

38-1000

**Blaine Air Permeability Apparatus**

---

---

38-1100/01

**Auto Blaine Apparatus**

---

38-3005

**Le Chatelier Mould**

---

42-0821

**3.1 Shape Index Caliper.**

---

42-1000/01

**Buoyancy Balance 6 kg X 0.1 g supplied with Support Frame Water Tank & Suspension Hook**

---

42-4005

**Aggregate Impact Value Apparatus**

---

42-5300/10

**Set of 12 Abrasive Charges (ASTM).**

---

42-5305/10

**Set of 12 Abrasive Charges EN)**

---

42-5315/01

**Los Angeles Abrasion Machine Meets ASTM and European Standards.  
220-240V 50Hz 1Ph.**

---

42-6000

**Pendulum Skid Resistance Tester**

---

42-6000/10

**Set of 3 Spreader Feet for Skid Resistance Tester for in-situ testing**

---

42-6000/11

**1.25" Rubber Mounted PSV Slider for 42-6000**

---

42-6000/12

**3.00" Rubber Mounted TRL (55) Slider for 42-6000**

---

42-6000/13

**3.00" Rubber Mounted Four S (96) Slider for 42-6000**

---

42-6000/14

**3.00" Rubber Mounted CEN Slider for 42-6000**

---

---

42-6200

**Base Plate for Skid Resistance Tester for lab testing**

---

47-3025

**Travelling Beam Device**

---

47-3130

**Charts for Autographic Recorder Pack of 10 Rolls Complete with 10 Fibre-Tipped Pens.**

---

80-0200/01

**ELE Sieve Shaker**

---



## Liquid Limit Device ASTM/ Aashto Hand-Operated W/ Revolution Counter. Supplied Less Grooving Tool.

Code: [24-0434](#)

Product Group: [Casagrande Method](#)

Complete with revolution counter. Supplied less grooving tool.

## Standards

ASTM D4318, AASHTO T89

## Accessories



### ASTM Metal Grooving Tool.

Code: [24-0453](#)



### Casagrande Grooving Tool Aashto

Code: [24-0461](#)





## ASTM Metal Grooving Tool.

Code: [24-0453](#)

Product Group: [Casagrande Method](#)

## Standards

ASTM D4318





## Casagrande Grooving Tool Aashto

Code: [24-0461](#)

Product Group: [Casagrande Method, Motorized Liquid Limit Device, AASHTO Grooving Tool](#)

- Rust resistant brass construction.
- 1 cm gage block located at end of handle.

The AASHTO Grooving Tool is used to control the width of the soil groove in the liquid limit cup, in accordance with AASHTO specifications.

## Standards

AASHTO T89

## Further Information

Brass construction with a gauge height of 1 cm.

## Specification

Construction	Brass.
Gauge Height	1 cm.
Weight	Net 3 oz. (85 g).

## Spares/Consumables



## ASTM Plastic Grooving Tools

Code: [24-0451](#)



## Semi-Automatic Cone Penetrometer

Code: [24-0545/01](#)

Product Group: [Semi-Automatic Cone Penetrometer](#),  
[Semi-Automatic Cone Penetrometer](#)

Bench mounted apparatus to determine the liquid limit of soils to BS1377. This method is applicable to a wide range of soils. The apparatus is fitted with a 150mm diameter dial indicator for direct reading of penetration. Supplied complete with 30 deg, 30mm long test cone. Manufactured from stainless steel and includes adjustable levelling feet.

Incorporates digital automatic controller, which releases the plunger head and ensures free falling of the penetration device during the test. The time set is displayed by a bright easy to read display.

## Standards

BS 1377, BS 1924-2, EN 1997-2

## Specification

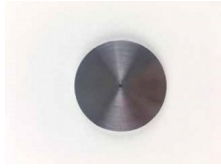
Dial Indicator	150 mm diameter graduated in 400 x 0.1 mm divisions. Indicator incorporates a friction/gear system.
Height	Adjustable using rapid integral clamping mechanism.
Cone Release Cone	Semi-Automatic 1 x 30°, 35 mm test cone included.
Base	Cast aluminum with adjustable leveling feet.
Weight	Net 19 lbs. (8.64 kg).

## Accessories



### Penetration Test Cup.

Code: [24-0548](#)

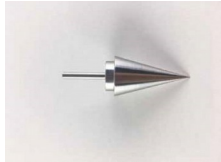


## Test Gauge for Checking Condition of Cone Point.

Code: [24-0546](#)

---

## Spares/Consumables

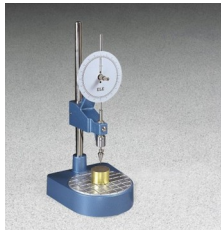


## Penetration Test Cone

Code: [24-0544](#)

---

## Alternatives



## Cone Penetrometer. Complete with Stainless Steel Test Cone.

Code: [24-0540](#)



## Sand Equivalent Test Set

Code: [24-4917](#)

Product Group: [Sand Equivalent Test Set](#)

### Set Includes:

- 1 Solid Rubber Stopper.
- 1 2-Hole Rubber Stopper.
- 1 Pinch Clamp.
- 1 Carrying Case.
- 1 Weighted Foot Assembly.
- 1 Funnel.
- 1 Irrigation Tube.
- 1 Siphon Tube.
- 1 Blow Hose.
- 1 Measuring Can 85ml +/- 5ml.
- 1 Bottle Stock Solution.
- 4 Sand Equivalent Cylinders.

## Standards

ASTM D2419, AASHTO T176

## Specification

Stock Solution

Mixture of calcium chloride and glycerin.

Carrying Case

Plastic; holds all components.

Weight

Net 22 lbs. (10 kg).

## Spares/Consumables



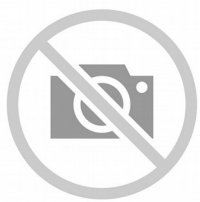
### Sand Equivalent Cylinder

Code: [24-4917/10](#)



### Stock Solution 1 gallon

Code: [24-4938](#)



## Stock Solution 8 oz.

Code: [24-4936](#)



## Straight Edge 300mm.

Code: [24-9010](#)

Product Group: [BS/EN compaction test 4.5kg, Proctor compaction, Straightedge](#)

300 mm

## Standards

BS 1377-4, BS 1924-2, ASTM D698, ASTM D1557, AASHTO T99, EN 13286-2, EN 13286-4, ASTM D1883, AASHTO T193, ASTM D558, ASTM D559, ASTM D560, AASHTO T134, AASHTO T135, AASHTO T136, AASHTO T180

## Specification

Construction	Flat ground tool steel; beveled edge.
Dimensions	L x W x T (300mm x 40mm x 6mm).
Weight	550g

## Accessories



## ASTM Compaction Rammer 2.5Kg.

Code: [24-9063](#)

## Alternatives



### ASTM Compaction Rammer 2.5Kg.

Code: [24-9063](#)





## ASTM Compaction Rammer 2.5Kg.

Code: [24-9063](#)

Product Group: [Proctor compaction](#), [Standard Compaction Hammer](#)

50.8mm diameter x 305mm deep.

## Standards

ASTM D1557, AASHTO T180, ASTM D558, ASTM D559, ASTM D560, ASTM D698, AASHTO T99, AASHTO T134, AASHTO T135, AASHTO T136

## Specification

Hammer	2" diam. (50.8 mm); 5-1/2 lbs. (2.49 kg).
Drop	12 " (305 mm).
Guide Sleeve	Machined steel tubing with air pressure release holes
Finish	Corrosion resistant
Weight	4.1 kg (9 lbs)

## Accessories



## ASTM/Modified Proctor Compaction Rammer 4.5Kg.

Code: [24-9070](#)

# Product Sheet

www.ele.com  
+44 (0) 01525 249 200



## Straight Edge 300mm.

Code: [24-9010](#)

---

### Alternatives



## ASTM/Modified Proctor Compaction Rammer 4.5Kg.

Code: [24-9070](#)



## Straight Edge 300mm.

Code: [24-9010](#)



## ASTM/Modified Proctor Compaction Rammer 4.5Kg.

Code: [24-9070](#)

Product Group: [ASTM/Modified Proctor compaction, Modified Compaction Hammer](#)

50.8mm diameter x 457.2 mm drop.

## Standards

ASTM D1557, AASHTO T180

## Specification

Hammer	2" diam. (50.8 mm); 10 lbs. (4.5 kg).
Drop	18" (457.2 mm).
Guide Sleeve	Machined steel tubing with integrally spun end cap; air pressure release holes.
Finish	Corrosion resistant
Weight	Net 6.3 kg (14 lbs)

## Accessories



## ASTM Compaction Rammer 2.5Kg.

Code: [24-9063](#)

## Alternatives



### ASTM Compaction Rammer 2.5Kg.

Code: [24-9063](#)



## Cbr-Test 50 Machine 50kN Capacity BS and ASTM Supplied with Stabilising Bar.

Code: [24-9150/01](#)

Product Group: [CBR Load Frames](#)

- Single speed machine (BS/EN and ASTM)
- Rapid platen adjustment
- Complete with stabilising bar
- Compact, bench-mounting design
- Options for mechanical or electronic measurement

Designed for performing laboratory CBR tests to BS 1377, EN13286-47 and ASTM D1883, this bench mounting machine comprises a twin column frame incorporating a motorised drive system. Rapid adjustment of the platen is provided, which enables daylight to be taken up quickly and also close control of application of a seating load.

## Standards

BS 1377, BS 1924, EN 13286-47, ASTM D1883, AASHTO T193

## Specification

Dimensions (l x w x h)	550 x 400 x 1220 mm
Max vertical clearance	800 mm
Horizontal clearance	255 mm
Platen diameter	133 mm
Platen travel	105 mm
Weight kg	80

## Accessories



### 50kN Clamped Boss Load Ring

Code: [78-0860](#)



### 50kN S-type Load Cell

Code: [27-1559](#)



## ASTM Cbr Mould Complete with Collar & Perforated Base

Code: [24-9228](#)

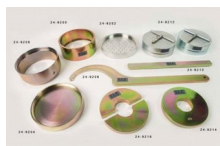
---



## BS Cbr Mould Body.

Code: [24-9198](#)

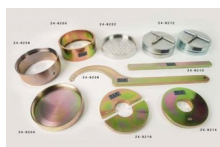
---



## BS Extension Collar

Code: [24-9200](#)

---



## BS Solid Base or Top Plate

Code: [24-9204](#)

---



## Cbr Penetration Piston (Adjustable).

Code: [24-9183](#)

---



## CBR Penetration Transducer 50mm Travel Fitted with 5 Pin Din Plug.

Code: [27-1705](#)



## Clamped Boss Load Ring - 10.0 kN

Code: [78-0460](#)



## Clamped Boss Load Ring - 2.0 kN

Code: [78-0060](#)



## Clamped Boss Load Ring - 28.0 kN

Code: [78-0760](#)



## Penetration Dial Gauge BS

Code: [24-9186](#)





## Penetration Piston

Code: [24-9182](#)



## Penetration/Swell Dial Gauge ASTM.

Code: [24-9184](#)

## Alternatives



## CBR-Test 50 Machine 50 kN Capacity BS and ASTM Supplied with Stabilising Bar.

Code: [24-9150/02](#)



## Cbr-Test 50 Machine 50kN Capacity BS and ASTM Supplied with Stabilising Bar.

Code: [24-9150/06](#)



## Cbr-Test 50 Machine 50kN Capacity BS and ASTM Supplied with Stabilising Bar.

Code: [24-9150/01](#)



## MultiPlex 50 Load Frame

Code: [25-3700/01](#)



## Penetration Piston

Code: [24-9182](#)

Product Group: [Penetration Measurement](#)

1.935 mm<sup>2</sup> (3 in<sup>2</sup>) area foot of case hardened steel.  
Designed to fit all ELE load rings.



## Penetration/Swell Dial Gauge ASTM.

Code: 24-9184

Product Group: Expansion (swell) Test Equipment,  
In-situ CBR, Conversion of In-situ to Laboratory CBR,  
Penetration Measurement

1 in travel x 0.0005 in divisions. Complete with rack  
extensions and chisel edge anvil.

## Standards

BS 1377, BS 1924



## Bracket and Adaptor. Dual Purpose Mounting Bracket for CBR Penetration Gauges EL24-9184/EL24-9186

Code: [24-9188](#)

Product Group: [In-situ CBR](#), [Conversion of In-situ to Laboratory CBR](#), [Penetration Measurement](#)

Dual purpose mounting bracket for CBR penetration dial gauges. Allows gauge to be fixed to penetration piston or load ring.

## Standards

BS 1377, BS 1924



## ASTM Cbr Mould Complete with Collar & Perforated Base

Code: [24-9228](#)

Product Group: [ASTM/AASHTO CBR mould](#)

With collar and perforated baseplate.

Steel mould, corrosion resistant finish, supplied with collar and perforated base plate.

Designed to accept optional cutting collars and solid baseplates.

## Standards

ASTM D1883, AASHTO T193

## Specification

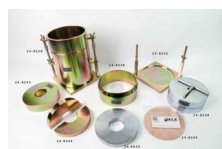
Mould	152.4 x 177.8 mm (inside diameter x height)
Collar	50.8 mm height, fits both ends of mould
Base plate	Perforated
Construction	All steel, plated
Weight kg	9

## Accessories



### 4.5Kg Annular Surcharge Weight ASTM.

Code: [24-9243](#)



### 5 Lb. Annular Surcharge Weight ASTM.

Code: [24-9245](#)



### ASTM Cutting Collar.

Code: [24-9236](#)



## ASTM Spacing Disc.

Code: [24-9238](#)

## Alternatives



## 4.5Kg Annular Surcharge Weight ASTM.

Code: [24-9243](#)



## 5 Lb. Annular Surcharge Weight ASTM.

Code: [24-9245](#)



## ASTM Cutting Collar.

Code: [24-9236](#)



## ASTM Spacing Disc.

Code: [24-9238](#)





## ASTM Cutting Collar.

Code: [24-9236](#)

Product Group: [ASTM/AASHTO CBR mould accessories, Cutting Edge](#)

To fit ASTM CBR mould body, manufactured with a cutting edge to enable undisturbed samples to be taken in the field.

## Standards

ASTM D1883, AASHTO T193

## Specification

Dimensions	6" i.d. x 1-1/2" h. (152 .4 x 38 mm).
Construction	Machined seamless steel tubing; recessed for mounting on CBR Mold.
Finish	Plated.
Weight	Net 1-1/2 lbs. (0.7 kg).

## Accessories



## ASTM Cbr Mould Complete with Collar & Perferated Base

Code: [24-9228](#)

## Alternatives



## ASTM Cbr Mould Complete with Collar & Perferated Base

Code: [24-9228](#)



## ASTM Spacing Disc.

Code: [24-9238](#)

Product Group: [ASTM/AASHTO CBR mould accessories](#), [Spacer Discs](#)

150.8 mm diameter x 61.4 mm deep.

## Specification

Construction

Steel; machined on all sides.

Finish

Plated.

Weights

Net 18.9 lbs. (8.6 kg).

## Accessories



## ASTM Cbr Mould Complete with Collar & Perferated Base

Code: [24-9228](#)

## Alternatives



## ASTM Cbr Mould Complete with Collar & Perferated Base

Code: [24-9228](#)



## Filter Screen 150mm Dia with 0.15mm Mesh.

Code: [24-9240](#)

Product Group: [ASTM/AASHTO CBR mould accessories](#), [Filter Screen](#)

150 mm dia, 150 µm mesh for use with ASTM mould.

## Specification

Mesh	Brass; number 100.
Size	5-15 /16" diam. (135 mm).
Weight	Net 1 oz. (28 g).

## Accessories



## Filter Paper Equivalent to Whatman No 5 150mm Dia Box of 100.

Code: [24-9250](#)

## Alternatives



## Filter Paper Equivalent to Whatman No 5 150mm Dia Box of 100.

Code: [24-9250](#)



### 4.5Kg Annular Surcharge Weight ASTM.

Code: 24-9243

Product Group: [ASTM/AASHTO CBR mould accessories](#)

## Accessories



## ASTM Cbr Mould Complete with Collar & Perforated Base

Code: 24-9228

## Alternatives



## ASTM Cbr Mould Complete with Collar & Perforated Base

Code: 24-9228



## 5Lb (2.27Kg) Split Surcharge Weight.

Code: [24-9244](#)

Product Group: [ASTM/AASHTO CBR mould accessories, Surcharge Weights](#)

## Specification

Construction

Machined steel.

Finish

Plated.

## Accessories



## 5 Lb. Annular Surcharge Weight ASTM.

Code: [24-9245](#)

## Alternatives



## 5 Lb. Annular Surcharge Weight ASTM.

Code: [24-9245](#)



## Filter Paper Equivalent to Whatman No 5 150mm Dia Box of 100.

Code: [24-9250](#)

Product Group: [Filter Paper, ASTM/AASHTO CBR  
mould accessories](#)

Box of 100.

## Standards

ASTM D1883, AASHTO T193

## Specification

Grade	Coarse.
Size	15 cm diam. (5.9â€³).
Weight	Net 8 oz. (227 g).

## Accessories



## Filter Screen 150mm Dia with 0.15mm Mesh.

Code: [24-9240](#)

## Alternatives



## Filter Screen 150mm Dia with 0.15mm Mesh.

Code: [24-9240](#)



## Swell Plate

Code: [24-9260](#)

Product Group: [Expansion \(swell\) Test Equipment](#),  
[Swell Plate](#)

With adjustable stem.

## Standards

ASTM D1883, AASHTO T193

## Specification

Base Plate	5 15/16" diam. (150.8mm); perforated.
Contact Head	Adjustable; locks on stem with knurled nut.
Construction	Aluminium
Weight	Net 2-1/2 lbs. (1.1 kg).





## Swell Stand

Code: [24-9262](#)

Product Group: [Expansion \(swell\) Test Equipment, Tripod Attachment](#)

For mounting Swell Dial Gauge in position on CBR mould collar.

## Standards

ASTM D1883, AASHTO T193

## Further Information

Requires dial indicator; not included, order separately

## Specification

Construction	Machined, one-piece cast aluminum.
Contact Head	Integral part of ssembly; holds dial indicator.
Construction	2" I. (50.8 mm) included.
Weight	Net 1 lb. (0.4 kg).

## Accessories



## Mechanical Dial Indicator - 25 mm Range Clockwise Movement

Code: [88-4110](#)

## Spares/Consumables



## Dial Indicator - 1.0" Range

Code: [88-4100](#)

---

## Alternatives



## Electronic Digital Indicator, 1.0"/25.4 mm range

Code: [88-4220](#)



## Falling Head Permeability Cell.

Code: [25-0605](#)

Product Group: [Falling Head Apparatus](#)

## Specification

Cell	Plated seamless tube 100 mm diameter x 130 mm height
Base	Porous plate with three tie rods
Top plate	Machined to accept smaller tubes
Weight kg	3.4



## Standpipe Panel.

Code: [25-0609](#)

Product Group: [Compaction Permeameter](#)

Complete with three glass tubes of 1.5, 3 and 5 mm diameter bore, approximately 1.4 metres long. Supplied with metre scale and thick walled flexible tubing. The glass tubes are fitted to a panel for wall mounting and connected to a 3-way outlet valve. Complete with three glass tubes of 1.5, 3 and 5 mm diameter bore, approximately 1.4 metres long. Supplied with metre scale and thick walled flexible tubing. The glass tubes are fitted to a panel for wall mounting and connected to a 3-way outlet valve.



## De-Airing Tank.

Code: [25-0611](#)

Product Group: [Compaction Permeameter](#)

Manufactured from transparent plastic with de-airing jet inlet and a flow outlet connection with flexible tubing. The tank is manufactured to withstand a reduced pressure and is suitable for direct wall mounting.



## Soaking Tank.

Code: [25-0613](#)

Product Group: [Compaction Permeameter](#)

With fixed overflow. Used for containing permeability cell during test.



## DSU Electronic Readout and Control System 220 - 240 V AC 50/60 Hz

Code: 27-1300/01

Product Group: [Data Logging with the DSU](#), [Electronic Instrumentation](#), [Automatic Data Acquisition - CBR](#), [Electronic Instrumentation](#), [Electronic Instrumentation](#), [Data Logging with the DSU](#)

· Download the full brochure here  
[[/Page/catalogue-download/NTRmZS9UaGUgTkVXIERTVSBVU0EucGRm](#)]

- 4 channel automatic control and data-logging unit
- Automatic, dual-frame control
- Performs CBR, Marshall, Unconfined Compression, Direct and Residual Shear, One-Dimensional Consolidation and Unconsolidated Undrained tests
- LAN connection - software can be running anywhere on your server
- Never lose data from power fails - 2 gigabytes of non-volatile memory
- Extended warranty

The Data System Unit (DSU) is a versatile instrument designed to accommodate the general logging requirements of geotechnical and materials testing engineers. Its intelligent interface allows the user to work with a range of different sensors.

### Further Information

The DSU has two distinct modes of operation. The first is referred to as DS mode (DataSystem) for operation with ELE International's established DS7 geotechnical testing software.

#### DS MODE

- Up to four one dimensional consolidation tests
- Up to two CBR tests
- One direct/residual shear test
- One triaxial quick un-drained test

#### DU MODE

- Up to two Marshall tests
- Up to two CBR tests
- Up to two Unconfined compression tests
- Automatic frame control

#### OVERVIEW

- Touch Screen data entry for standalone operation, Marshall/CBR/Quick un-drained
- Automatic single and dual frame control (with multiplex 50 frame)
- Log memory of 2 gigabytes
- Non-volatile memory
- Ethernet TCP/IP link and serial comms support
- Market leading signal stability
- Certificate and manual calibration features

Become a member of the ELE International web site, add this new product to a wishlist to receive a quote! Click here [\[Login\]](#)

This product is now available in the USA and Canada!

---

## Accessories



### Cable, Safety/ID

Code: [27-1300/11](#)



### Dual Frame Comms Cable

Code: [27-1300/10](#)



### PC Cable

Code: [27-1300/12](#)

---

## Alternatives



### DSU Electronic Readout and Control System 110 V AC 60 Hz

Code: [27-1300/02](#)





## Marshall Test 50

Code: [45-6810/01](#)



## Marshall Test 50

Code: [45-6810/06](#)



## 50kN S-type Load Cell

Code: [27-1559](#)

Product Group: [Load Measurement](#), [Electronic Instrumentation](#), [Force measurement](#), [Electronic Instrumentation](#)

Maximum working capacity of 50 kN and excitation 10 V AC/DC with an output of 2.7 mV/V nominal. Aluminium alloy and Stainless Steel construction with IP65 environmental protection. Fitted with 5-pin DIN plug.

## Standards

EN 12697-34

## Further Information

**\*\*NOT AVAILABLE FOR SALE IN THE USA\*\***

## Accessories



## Breaking Head (Marshall)

Code: [45-6850](#)



## S-Type Load Cell 5 kN.for Triaxial Tests. Fitted with 5 Pin Din Plug.

Code: [27-1551](#)

## Alternatives



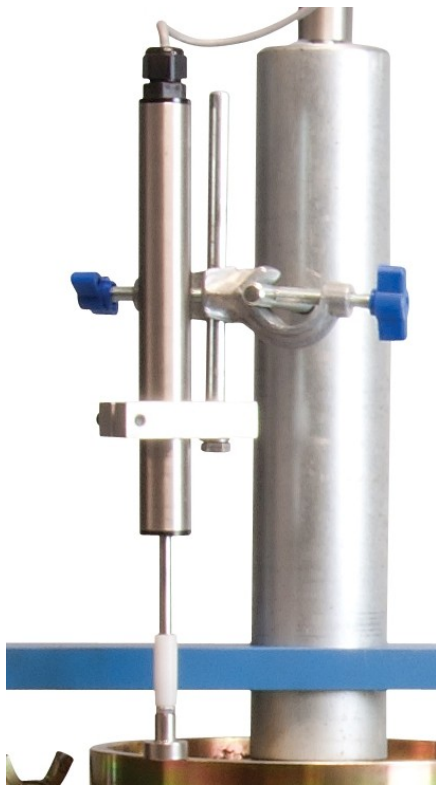
## Breaking Head (Marshall)

Code: [45-6850](#)



## S-Type Load Cell 5 kN. for Triaxial Tests. Fitted with 5 Pin Din Plug.

Code: [27-1551](#)



## CBR Penetration Transducer 50mm Travel Fitted with 5 Pin Din Plug.

Code: [27-1705](#)

Product Group: [Penetration Measurement](#),  
[Penetration Measurement](#)

- Ideally suited for use with GDU for accurate displacement measurements
- Models available for use in consolidation, shear, CBR and triaxial test applications
- Supplied complete with mounting hardware for specified products

Displacement Transducers are used in consolidation, shear, CBR and triaxial test applications for accurate displacement measurements. They are supplied complete with a 5-pin DIN type connector for direct connection to the GDU.

## Specification

Construction	Fully encapsulated electronics, sealed in a stainless steel case
Excitation	14 V DC
Connector	5-pin DIN type
Mounting bracket	Included as standard
Weight kg	0.45



### **DS7.2 California Bearing Ratio (CBR) Penetration Program for Windows 7, 32/64 bit**

Code: [27-1798](#)

Product Group: [DS7.2 CBR Penetration Software](#),  
[DS7.2 for Windows 7, Automatic Data Acquisition -](#)  
[CBR, DS7.2](#)

This program provides the classical data for the CBR test. Load and penetration are monitored simultaneously. The program tabulates the results and provides a graphical presentation report.



## Dynamic Cone Penetrometer 8Kg Hammer (Trl Design).

Code: [29-3720](#)

Product Group: [In-situ Testing](#)

The TRL (Transport Research Laboratory) Dynamic Cone Penetrometer (DCP) is used for rapid in-situ measurement of the structural properties of existing road pavement constructed with unbound materials. The unit incorporates an 8 kg weight with a drop of 575 mm, and a 20 mm diameter cone fitted to the end of the shaft, allowing measurements to be made down to a depth of approximately 850 mm.

Readings are usually taken after a set number of blows, changing the number according to the strength of the layer being penetrated. For good granular bases, readings every five to ten blows are satisfactory, but for weaker sub-base layers and subgrades, readings every one to two blows may be appropriate.

The DCP requires three operators, one to hold the instrument in a vertical position, one to raise the hammer and let it fall and one to record the results. A typical test takes only a few minutes, providing a very efficient method of obtaining information which would otherwise require the excavation of test pits. Where pavement layers have different strengths, boundaries can be identified and layer thickness determined.

## Further Information

Supplied complete with all necessary tools, assembly and operating instructions.

## Spares/Consumables



### Spare Cone for Dynamic Cone Penetrometer.

Code: [29-3720/10](#)



## Plate Bearing Apparatus Complete. 500kN Capacity

Code: 29-3800

Product Group: Plate Bearing Apparatus, In-situ Testing

Applications include the determination of bearing capacity of the soil in situ, designing for static loads on spread footings, and repetitive and non-repetitive plate loading tests of soils and flexible pavements.

Manufactured from machined steel plate with a finished thickness exceeding 25 mm. The plate has concentric markings on one face. All plates are supplied with two lifting eyes except for the 150 mm dia plate.

NOTE: to successfully perform the test, a reaction load is required.

IMPORTANT: The equipment is used in conjunction with a reaction beam. This is not supplied with the equipment.

## Standards

BS 1377, EN 1997-3, ASTM D1194, ASTM D1195, ASTM D1196

## Further Information

Comprising of:

- Hydraulic Jack 500 kN capacity
- Pressure system
- Datum bar
- 4x dial gauges 50 mm travel x 0.01 mm divisions
- 4x bearing plates: 150 mm, 305 mm, 455 mm and 760 mm diameter

## Specification

Loading jack	500 kN capacity with integral ball seating
Pump	Hand operated, single speed with integral oil reservoir
Hose	3 m long. Maximum pressure 70 MPa with quick release couplings
Gauge	100 mm dia with quick release couplings and graphs to convert readings to kN, kgf and

# Product Sheet

[www.ele.com](http://www.ele.com)  
+44 (0) 01525 249 200



Weights

lbf  
Loading jack 24 kg.  
Pressure system 12.5 kg





## Slump Test Set BS & ASTM. C/W Slump Cone Base Plate Steel Rule Tamping Rod & Funnel.

Code: [34-0192](#)

Product Group: [Slump Test](#)

Test is appropriate for concrete mixes of medium and high workability.

The test is carried out by filling the slump cone with freshly mixed concrete, which is tamped with a steel rod in three layers. The concrete is levelled off with the top of the slump cone, the cone removed, and the slump of the sample is immediately measured.

BS and ASTM comprising of slump cone, base plate, steel rule, tamping rod and funnel.

## Further Information

**\*\*NOT AVAILABLE FOR SALE IN THE USA\*\***

## Accessories



### Sample Tray - 1200 x 1160 x 50 mm

Code: [81-4230](#)



### Shovel - With flat blade

Code: [81-0240](#)

## Spares/Consumables



## Stopwatch

Code: [81-0521](#)



## Compacting Bar 25mm Sq X 380mm

Code: [34-2910](#)

Product Group: [Accessories for Concrete Moulds,](#)  
[Precision Air Entrainment Meter](#)

Steel, 380 x 25 mm (length x square) tamping area,  
EN/BS.

## Standards

EN 12390-1



## Vibrating Table 600 X 400mm Table Top. 220-240V 50Hz 1Ph. Supplied with clamping assembly

Code: [34-6250/01](#)

Product Group: [Vibrating Table](#)

The ELE vibrating table is a compact unit providing controlled vibro-compaction in the laboratory, using cube or cylinder moulding equipment.

Vibrating table mounted on a steel stand, supplied with clamp assembly.

Complies to EN 12390-2, EN 12350-6 (BS 1881-107), EN 12350-7 (BS 1881-106)

## Standards

EN 12390-2, EN 12350-6, EN 12350-7

## Further Information

**\*\*NOT AVAILABLE FOR SALE IN THE USA\*\***

3000 cycles per minute. For 220 - 240 V AC, 50 Hz, 1 ph.

## Specification

Dimensions (table top)	600 x 400 mm
Maximum no. Cube moulds	2 x 150 mm <sup>2</sup>
Clamp Assembly	Single
Weight	60 kg

## Accessories



### Compacting Bar 25mm Sq X 380mm

Code: [34-2910](#)

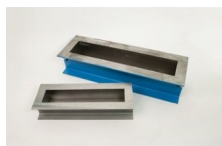


## Wire Brush

Code: 81-0705

---

## Alternatives



### 100 X 100 X 500mm Beam Mould.

Code: 34-5003



### 100mm Cube Mould 2-Part Clamp Type. Cast Iron Construction. BS EN Compliant.

Code: 34-4650



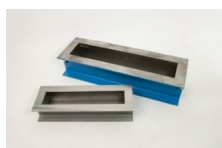
### 100mm Cube Mould 4-Part Clamp Type. Cast Iron Construction. BS EN Compliant.

Code: 34-4520



### 100mm Dia Cylinder Mould 200mm Long.

Code: 34-5210



### 150 X 150 X 750mm Beam Mould.

Code: 34-5053



**150mm Cube Mould 2-Part Clamp Type. Cast Iron Construction. BS EN Compliant.**

Code: [34-4670](#)



**150mm Cube Mould 4-Part Clamp Type. Cast Iron Construction. BS EN Compliant.**

Code: [34-4570](#)



**150mm Dia Cylinder Mould 150mm Long.**

Code: [34-5230](#)



**150mm Dia Cylinder Mould 300mm Long.**

Code: [34-5260](#)



**200mm Cube Mould Clamp Type. Cast Iron Construction. Stamped Mould Sections. EN Compliant.**

Code: [34-4620](#)



## Standard Concrete Test Hammer

Code: [35-1480](#)

Product Group: [Concrete Test Hammer, Surface Hardness](#)

The hammer is intended for testing the quality of concrete in finished structures such as buildings and bridges. Supplied complete with carrying case and carborundum stone, the hammer is suitable for testing concrete with compressive strengths of 10 to 70 N/mm<sup>2</sup>.

## Standards

ASTM C805

## Specification

Body	Includes indicator scale, calibration curves.
Calibration Curves	Rebound number vs. compressive strength.
Rubbing Stone	Prepares test surface.
Accuracy	Within 15 %.
Carrying Case	Plastic.
Weight	Net 3 lbs. (1.4 kg).

## Accessories



### Testing Anvil

Code: [35-1530](#)

## Spares/Consumables



### Rubbing Stone

Code: [35-1475/10](#)

## Alternatives



## Concrete Test Hammer - English

Code: 35-1475





## Advanced SilverSchmidt Concrete Test Hammer (ST Version)

Code: 35-1500

Product Group: Surface Hardness, Surface Hardness

The Silver Schmidt ST/PC is the first integrated concrete test hammer featuring true rebound value and unmatched repeatability. Two factors contribute to the improved performance of this concrete test hammer over its predecessors:

Velocity based detection of the rebound quotient.

The lightweight hybrid design of the impact plunger made from aerospace alloy, matched to the elastic properties of the concrete and equipped with a hardness steel cap. Independent validation testing by BAM (Federal Institute for Materials Research and Testing, Germany) has shown the Silver Schmidt ST/PC to have less dispersion than the classical concrete test hammer over the entire range. The unique design and high quality construction of the concrete test hammer Silver Schmidt ST/PC makes rebound hammer testing quicker and more accurate than ever before.

The rebound value requires no angular correction. The concrete test hammer offers customer conversion curves for a wide range of compressive concrete strengths, including low  $f_c$  ( $<10$  N/mm<sup>2</sup>, 1'450 psi) and high strength concrete (up to 100 N/mm<sup>2</sup>, 14'500 psi).

A large number of measurement points can be easily collected by the concrete test hammer and automatically evaluated according to statistical data. The concrete test hammer offers automatic conversion to the required measurement unit (MPa, N/mm<sup>2</sup>, kg/cm<sup>2</sup>, psi).

The Silver Schmidt ST/PC concrete test hammer combines a high measurement accuracy with an unmatched repeatability.

Complies to EN 12504-2 (BS 1881-202), ASTM C805/C805M.

## Further Information

- The SilverSchmidt ST concrete test hammer combines a high measurement accuracy with an unmatched repeatability.
- The rebound value requires no angular correction
- The concrete test hammer offers customer conversion curves for a wide range of compressive concrete strengths, including low  $f_c$  ( $<10$  N/mm<sup>2</sup>, 1'450 psi) and high strength concrete (up to 100

N/mm<sup>2</sup>, 14'500 psi)

- A large number of measurement points can be easily collected by the concrete test hammer and automatically evaluated according to statistical data

- The concrete test hammer offers automatic conversion to the required measurement unit (MPa, N/mm<sup>2</sup>, kg/cm<sup>2</sup>, psi)

PLEASE NOTE THIS MODEL IS SUPPLIED WITH SOFTWARE ONLY FOR PERFORMING FIRMWARE UPGRADES AND SELECTING STATISTICS PRESETS.

## Specification

Technical Data	Silver Schmidt
Impact Energy	2.207 Nm
Hammer Mass	135 g
Spring Constant	0.79 N/mm
Spring Extension	75 mm (2.95")
Dimensions	55 x 55 x 255 mm (2.16" x 2.16" x 9.84")
Concrete Compressive Strengths	10-100 N/mm <sup>2</sup> (1450-14500 psi)
Weight	570 g (1.4 lb)

## Accessories



### SilverSchmidt Anvil

Code: [35-1500/10](#)



## ADR Touch SOLO 2000 Semi-Automatic Compression Machine with Digital Readout.

Code: 36-3090/01

Product Group: General Purpose Compression Machines

- 2000 kN/450 000 lbf capacity
- Tests 150 and 100 mm concrete cubes or cylinders up to 320 x 160 mm diameter
- Incorporates an ADR touch digital readout with rugged electrically driven hydraulic power pack with manual pace control as standard.
- High stability welded construction steel frame.
- Fitted with front and rear gates for operator protection.
- Maximum vertical clearance between upper & lower platen 340mm and horizontal distance is 325 mm
- Supplied with 222 mm dia removable lower platen marked for centering of cube and cylinder specimens.

Incorporating the ADR Touch digital readout, the machines are designed to test cubes and cylinders in accordance with most International Standards. Supplied fitted for cylinder testing with safety gates. When used for cube testing appropriate distance pieces according to the size of specimen to be tested are required and must be ordered separately.

## Further Information

**\*\*NOT AVAILABLE FOR SALE IN THE USA\*\***

The Standard range of compression machines has been designed to meet the need for a simple, economic and reliable means of testing concrete.

Whilst delivering all the features and reputation of the established ADR Series with its extensive design history, the new and improved user interface provides a high quality platform for testing that enhances the performance of ELE's compression machines.

New, sophisticated electronics further the benefits of simplified operation, whilst delivering the highest levels of accuracy in testing concrete and cement/mortar samples, satisfying the needs of Quality Control Managers, Lab Managers and Technicians.

### ACCURACY & SAVINGS

The new ADR Touch Series, with 145mm (5.7") high resolution QVGA touch screen interface and intuitive menu-driven operation, reduces the time taken to set up the machine and perform tests, reducing the time to train staff by up to 25%.

- Up to 6 sample types can be set as favorites, enabling one-touch set up for repeat testing.
- Full, QWERTY touch pad for input of test data.

Most testing errors produce lower strength results. Noncompliant loading rates can generate errors in measured strength. The user interface includes real-time display of load vs. time, further ensuring accurate and consistent test results and providing "goodness of test" data to improve traceability in your QC operations.

## TRACEABILITY & DATA QUALITY

The ADR range now provides improved data quality and traceability in due diligence cases - it is now possible to demonstrate traceability all the way from the machine/user to the accreditation body, increasing your reputation and peace of mind - all test results now come complete with the machine serial number attached.

- Enhanced USB data communications between PC and machine - eliminating the need for download software.
- Two gigabytes of storage memory.
- Full customization of sample sizes - stress calculations are automatically recalculated.

## USER SAFETY

With full safety gates as standard, total systems diagnostics, ram run-out switches and overload warnings ensure the safety of your employees and the reliability of your machine.

---

## Specification

Testing Standards	BS EN ISO 7500-1, ASTM E4
Capacity	2000 kN
Cubes (Concrete)	Up to 150 mm
Cylinders (Concrete)	Up to 160 x 320 mm
Blocks	n/a
Flexural Testing	Via Flexural Frame
TFV and ACV	Yes
Voltage Supply	220-240V 50/60 Hz 1Ph.
Frame Type	Welded
Max vert. Clearance	340 mm
Max hor. Clearance	325 mm
Platen Sizes	Lower, Upper 222 mm
Max Ram Travel	50 mm

---

## Accessories



### **100kN Flexural Fitting Kit (ADR) Used for Connecting Flexural Frames to ADR Compression Machines.**

Code: [37-6138](#)



## 2000 kN Load Calibration Device complete with Handheld Readout Unit & Calibration Certificate ISO376

Code: [37-8315](#)



## ADR Touch Head for Compression Machines

Code: [37-5951/09](#)



## Flexible Hose

Code: [5038B0027](#)



## Impact Printer Rs232 Serial Connection. Supplied Complete with 1 Paper Roll.

Code: [37-4859/01](#)



## Standard Distance Piece - 100 mm Depth

Code: [37-5100](#)



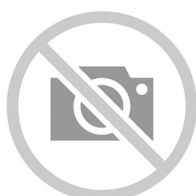
## Standard Distance Piece - 20 mm Depth

Code: [37-4980](#)



## Standard Distance Piece - 50 mm Depth

Code: [37-5000](#)



## Standard Distance Piece - 60 mm Depth

Code: [37-5020](#)



## Standard Distance Piece - 80 mm Depth

Code: [37-5050](#)

## Spares/Consumables



## Pressure transducer, 0-700bar, 0.05 to 10v DC Output

Code: [6014A0062](#)



## Pressure transducer, 0-70bar, 0.05 to 10v DC Output

Code: [6014A0065](#)

## Alternatives



### **ADR Touch SOLO 1500 Compression Machine with Digital Readout.**

Code: [36-0720/01](#)



## Standard Distance Piece - 50 mm Depth

Code: [37-5000](#)

Product Group: [Distance Pieces](#)

### Further Information

**\*\*Not available for sale in the USA\*\***





## Standard Distance Piece - 80 mm Depth

Code: [37-5050](#)

Product Group: [Distance Pieces](#)

## Further Information

**\*\*Not available for sale in the USA\*\***



## Standard Distance Piece - 100 mm Depth

Code: [37-5100](#)

Product Group: [Distance Pieces](#)

## Further Information

**\*\*Not available for sale in the USA\*\***



## 50 kN Mini-Flexural Machine

Code: 37-6040

Product Group: [Hand-operated Flexural Machine](#)

- Hand operated
- Rugged, high strength frame
- Double-action hydraulic pump
- Dual calibrated (kN/lbf) gauge

This compact flexural machine is designed for testing 100 mm and 150 mm square section beams. The base incorporates a series of bearer locating points, enabling a wide range of tests to be performed.

The unit is self contained with hydraulic pressure applied through a double-action hand pump to a ram fitted in the top of the frame making this an ideal portable onsite quality control machine. A 200 mm diameter load gauge, dual calibrated to 50 kN x 0.1 kN and 11000 lbf x 50 lbf graduations is fitted as standard.

Complies to EN 12390-5 (BS 1881-118), EN 1521, EN 13161, EN 772-6, ASTM C78/C78M, ASTM C293/C293, AASHTO T97, AASHTO T177.

## Standards

BS 1881-131

## Further Information

\*\*Not available for sale in the USA\*\*



## Blaine Air Permeability Apparatus

Code: 38-1000

Product Group: Blaine Fineness Apparatus,  
Determination of Fineness Blaine Apparatus

- Designed for the determination of fineness to EN 196-6, BS 4359-2, ASTM C204
- Supplied complete with stainless steel cell perforated disc and plunger Manometer U-Tube Aspirator bottle of Manometer liquid (pure mineral 1 litre) and a box of filter papers

## Standards

EN 196-6, EN 459-2, EN 13286-44, BS 4359-2, ASTM C204, AASHTO T153

## Specification

Cell	Stainless steel; 12.70 $\pm$ 0.10 mm i.d.
Disk	0.9 $\pm$ 0.1 mm thick with 30-40 one mm diam. holes.
Plunger	Stainless steel.
Manometer	U-tube glass with ground joint, stop cock and rubber bulb assembly.
Filter Paper	12.70 mm diam.
Fluid	Pure Mineral Oil.
Weight	Net 7 lbs. (3.2 kg).

## Accessories



## Electronic Balance - 620 g x 0.001 g

Code: 78-5405/01



## Filter Papers

Code: [38-0650](#)



## Pure Mineral Oil 1 Litre Bottle.

Code: [38-0620](#)



## Reference Cement

Code: [38-0640](#)



## Reference Cement

Code: [38-0645](#)

## Spares/Consumables



## Aspirator

Code: [38-0500/11](#)



## Blaine Air Permeability Cell

Code: [38-1000/15](#)



## Filter Paper

Code: [38-0652](#)



## Manometer U-tube

Code: [38-1000/10](#)



## Auto Blaine Apparatus

Code: 38-1100/01

Product Group: Determination of Fineness Blaine Apparatus

Designed for the determination of fineness to EN 196-6, ASTM C204 & AASHTO T153.

The Auto Blaine Apparatus is mounted on a stable metal plate. A sturdy metal enclosure contains the U-shaped manometer tube. The User can observe the level of the manometer fluid through a window. The measuring section on the U tube can't be individually set or changed. On top the measuring cell can be plugged in. The measuring procedure takes place on a PC. After the User enters the test data pertaining to the test, the test procedure is automatically carried out and analyzed.

## Specification

Measuring cell	ø 12.7 mm
Volume of measuring cell	approx. 1.9 cm <sup>3</sup>
Dimensions of the apparatus	175 mm wide x 300 mm deep x 450 mm high
Weight	4 kg
Precision of time measurement	0.2 s
Minimum computer requirements	PC with Windows XP, Vista, 7 operating system and with one available serial interface
Power Supply	220 - 240 V AC, 50 - 60 Hz, 1 ph



## Le Chatelier Mould

Code: 38-3005

Product Group: General Expansion of Dry Hydrated Lime by the Le Chatelier Method, Soundness of Cement Paste by the Le Chatelier Method, Soundness

Comprising a split cylinder fitted with two indicator stems. The mould is supplied complete with two glass plates and a weight 100 g  $\pm$ 10 g. Three moulds required for each test.

## Standards

BS 6463, EN 196-3, EN 459-2

## Further Information

**\*\*NOT AVAILABLE FOR SALE IN THE USA\*\***

## Accessories



## Extensibility of Mould Apparatus BS

Code: 38-3200



## Extensibility of Mould Apparatus EN

Code: 38-3205



## Le Chatelier Water Bath

Code: 38-3420/01



## Tamping Rod

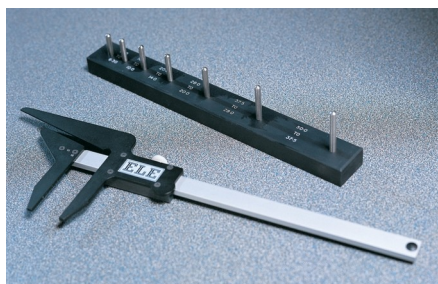
Code: 38-3300





## Trowel - Gauging

Code: [81-0335](#)



## 3.1 Shape Index Caliper.

Code: [42-0821](#)

Product Group: [Determination of the Shape Index](#)

Designed to measure the ratio of length to width of individual aggregate particles.

## Standards

EN 933-4

## Further Information

**\*\*NOT AVAILABLE FOR SALE IN THE USA\*\***

## Accessories



### 200 mm Diameter Lid

Code: [79-0010](#)



### 200 mm Diameter Receiver

Code: [79-0020](#)



### 200mm Dia BS Sieve 1.00mm Stainless Steel Mesh.

Code: [79-0230](#)



## 200mm Dia BS Sieve 125Mic Stainless Steel Mesh.

Code: [79-0110](#)

---



## 200mm Dia BS Sieve 2.00mm Stainless Steel Mesh.

Code: [79-0270](#)

---



## 200mm Dia BS Sieve 250Mic Stainless Steel Mesh.

Code: [79-0150](#)

---



## 200mm Dia BS Sieve 4.00mm Perforated Plate.

Code: [79-1500](#)

---



## 200mm Dia BS Sieve 500Mic Stainless Steel Mesh.

Code: 79-0190

---



## 200mm Dia BS Sieve 63 Mic Stainless Steel Mesh.

Code: 79-0070

---



## 200mm Dia BS Sieve 8.00mm Perforated Plate.

Code: 79-1540

---



## 300mm Dia BS Sieve 125mm Perforated Plate.

Code: 79-2710

---



## 300mm Dia BS Sieve 16.0mm Perforated Plate.

Code: [79-2580](#)



## 300mm Dia BS Sieve 31.5mm Perforated Plate.

Code: [79-2630](#)



## 300mm Dia BS Sieve 63.0mm Perforated Plate.

Code: [79-2670](#)



## 300mm Dia Lid.

Code: [79-2010](#)



## 300mm Dia Receiver.

Code: 79-2020



## ELE Sieve Shaker

Code: 80-0200/06



## ELE Sieve Shaker

Code: 80-0200/01



## Sample Tray - 406 x 406 x 50 mm

Code: 81-4030

# Product Sheet

[www.ele.com](http://www.ele.com)  
+44 (0) 01525 249 200



## Sieve Brush Nylon

Code: [79-7210](#)

---

## Alternatives



## Air Jet Sieving Machine

Code: [80-0300/09](#)



## Buoyancy Balance 6 kg X 0.1 g supplied with Support Frame Water Tank & Suspension Hook

Code: [42-1000/01](#)

Product Group: [Particle Density \(specific gravity\) and Water Absorption for Coarse Aggregates](#)

The buoyancy balance system developed by ELE consists of a rigid support frame, incorporating a water tank mounted on a platform. A mechanical lifting device is used to raise the water tank through the frame height immersing the specimen suspended below the balance. The balance supplied may also be used as a standard weighing device, thus providing a versatile and comprehensive weighing system in the laboratory. 6000 g x 0.1 g supplied with frame, water tank and suspension hook.

## Standards

EN 1097-6, EN 12697-6, BS 812, ASTM C127, AASHTO T85

## Further Information

\*\*NOT AVAILABLE FOR SALE IN THE USA\*\*

For 220 - 240 V AC, 50 - 60 Hz, 1 ph.

## Accessories



### 200 mm Diameter Lid

Code: [79-0010](#)



### 200 mm Diameter Receiver

Code: [79-0020](#)





## 200mm Dia BS Sieve 31.5mm Perforated Plate.

Code: [79-1630](#)

---



## 200mm Dia BS Sieve 4.00mm Stainless Steel Mesh.

Code: [79-0310](#)

---



## 200mm Dia BS Sieve 63 Mic Stainless Steel Mesh.

Code: [79-0070](#)

---



## 200mm Dia BS Sieve 63.0mm Perforated Plate.

Code: [79-1670](#)

---



## Digital Pocket Thermometer

Code: [82-5420](#)

---



## Sample Container - Tinned Steel 10 litres

Code: [81-3060](#)

---



## Sample Tray - 406 x 406 x 50 mm

Code: [81-4030](#)

---



## Wire Basket Brass with Handle Nominal 6000Cm<sup>3</sup> Capacity with 1.7mm Wire Mesh.

Code: [42-1005](#)



## Aggregate Impact Value Apparatus

Code: 42-4005

Product Group: Aggregate Impact Value (AIV),  
Aggregate Impact Value (AIV)

The apparatus has been designed in a particularly heavy duty form, with specially hardened steel surfaces for minimum wear. The assembly is heavily plated to ensure corrosion resistance and forms a rigid frame around the quick-release trigger mechanism, which ensures an effective free fall of the hammer when released. A built-in counter automatically indicates the number of blows delivered. The apparatus is supplied complete with cylindrical measure 75 mm diameter x 50 mm deep, and a steel tamping rod 16 mm diameter x 600 mm long.

Complies to BS 812-112



## Set of 12 Abrasive Charges (ASTM).

Code: [42-5300/10](#)

Product Group: [Los Angeles Abrasion Machine](#), [Los Angeles Abrasion Machine](#)

ASTM Set of 12.

## Standards

EN 1097-2, ASTM C131, ASTM C535, AASHTO T96



## Set of 12 Abrasive Charges EN)

Code: [42-5305/10](#)

Product Group: [Los Angeles Abrasion Machine](#)

EN Set of 12.

## Standards

EN 1097-2, ASTM C131, ASTM C535

## Further Information

**\*\*NOT AVAILABLE FOR SALE IN THE USA\*\***



## Los Angeles Abrasion Machine Meets ASTM and European Standards. 220-240V 50Hz 1Ph.

Code: [42-5315/01](#)

Product Group: [Los Angeles Abrasion Machine](#), [Los Angeles Abrasion Machine](#)

The machine consists of a closed hollow cylindrical steel drum rotating around its horizontal axis on ball bearing units mounted on a sturdy base framework.

The drum is driven at a speed of between 30 - 33 rpm via an enclosed belt drive arrangement from an electric motor/gearbox unit situated on the base frame. Inside the drum a full length steel shelf is attached, accessed by a dust-proof opening.

The cylinder incorporates a removable internal shelf, one shelf position is provided to meet the requirements of both the ASTM and EN test standards.

Controls are located easily on the right-hand side of the machine at convenient operator height.

Start and stop push buttons and a subtracting revolution counter allows the user to preset the number of revolutions before an automatic stop.

## Standards

EN 1097-2, ASTM C131, ASTM C535, AASHTO T96, NF P18-573

## Further Information

For 220 - 240 V AC, 50 Hz, 1ph.

## Specification

Capacity	5,000 g each of aggregate and charge.
Drum Speed	30-33 rpm.
Frame	Welded structural steel.
Counter	Adjustable; automatic shut-off; push-button reset and adjustment.
Controls	Magnetic motor starter with overload protection and integral On-Off switches.
Dimensions	38.6" w. x 36.2" d. x 38.6" h. (980 x 920 x 980 mm).
Weight	Net 882 lbs. (400 kg).

Motor

1 HP

## Accessories

### Set of 12 Abrasive Charges (ASTM).

Code: [42-5300/10](#)



### Set of 12 Abrasive Charges EN)

Code: [42-5305/10](#)



## Alternatives



**Los Angeles Abrasion Machine Meets ASTM and European Standards. 220-240V 60Hz 1Ph.**

Code: [42-5315/06](#)



**Los Angeles Abrasion Machine with CE Safety Cabinet W/ Microswitches. 220-240V 50Hz 1Ph.**

Code: [42-5310/01](#)



**Los Angeles Abrasion Machine with CE Safety Cabinet W/ Microswitches. 220-240V 60Hz 1Ph.**

Code: [42-5310/06](#)



## Pendulum Skid Resistance Tester

Code: 42-6000

Product Group: [Skid Resistance Testing](#), [Skid Resistance Testing](#)

The Pendulum Skid Resistance Tester was originally designed in the 1940s in the USA and further developed in the 1960s at the TRL (Transport Research Laboratory) for the testing of road surfaces.

The device measures the frictional resistance between a rubber slider mounted on the end of a pendulum arm and the surface to be tested. This provides road engineers with a method of checking the resistance of wet and dry surfaces to slipping and skidding, both in the lab and in situ.

It operates by a pendulum rotating about a spindle which is attached to a vertical pillar. At the end of the tubular arm, a head of known mass is fitted with a rubber slider. The pendulum is released from a horizontal position so that it strikes the sample surface at a constant speed. The distance travelled by the head after hitting the sample is determined by the friction of the sample surface.

## Standards

EN 1097-8:2009, EN 1436:1997, EN 13036-4:2003, ASTM E303-93, BS 812 Pt 114, BS 6077 Pt 1, BS 7044, BS 7188, BS 8204, BS 7976

## Further Information

### Applications:

- Assessment of surface friction and skid resistance properties
- Testing of aggregates in the PSV (Polished Stone Value) test
- Testing of new road surface materials
- Testing of pedestrian pavements
- RTA (road traffic accidents)
- Litigation investigations

### Features:

- Designed for lab and on site road surface testing
- Factory calibrated to EN1097-8
- Low friction arm, and lightweight pointer
- Supplied with 'F' scale for use with small slider set for 76mm slide length (PSV test)
- Highly repeatable
- Supplied with carrying case



## Specification

Dimensions (WxDxH)	695 x 295 x 695 mm
Volume	0.15m <sup>3</sup>
Weight	30 kg

## Accessories



### 1.25" Rubber Mounted PSV Slider for 42-6000

Code: [42-6000/11](#)



### 3.00" Rubber Mounted CEN Slider for 42-6000

Code: [42-6000/14](#)



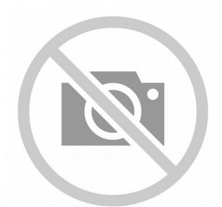
### 3.00" Rubber Mounted Four S (96) Slider for 42-6000

Code: [42-6000/13](#)



### 3.00" Rubber Mounted TRL (55) Slider for 42-6000

Code: [42-6000/12](#)



### Base Plate for Skid Resistance Tester for lab testing

Code: [42-6200](#)



## First traceable calibration for 42-6000

Code: [42-6000/15](#)



## Set of 3 Spreader Feet for Skid Resistance Tester for in-situ testing

Code: [42-6000/10](#)



## Set of 3 Spreader Feet for Skid Resistance Tester for in-situ testing

Code: [42-6000/10](#)

Product Group: [Skid Resistance Testing](#), [Skid Resistance Testing](#)



## 1.25" Rubber Mounted PSV Slider for 42-6000

Code: [42-6000/11](#)

Product Group: [Skid Resistance Testing](#), [Skid Resistance Testing](#)

Slider for polished stones



## 3.00" Rubber Mounted TRL (55) Slider for 42-6000

Code: [42-6000/12](#)

Product Group: [Skid Resistance Testing](#), [Skid Resistance Testing](#)

Slider for car tyres on asphalt



## **3.00" Rubber Mounted Four S (96) Slider for 42-6000**

Code: [42-6000/13](#)

Product Group: [Skid Resistance Testing](#), [Skid Resistance Testing](#)

Slider for shoes on surfaces



## **3.00" Rubber Mounted CEN Slider for 42-6000**

Code: [42-6000/14](#)

Product Group: [Skid Resistance Testing](#), [Skid Resistance Testing](#)



## Base Plate for Skid Resistance Tester for lab testing

Code: [42-6200](#)

Product Group: [Skid Resistance Testing](#), [Skid Resistance Testing](#)





## Travelling Beam Device

Code: **47-3025**

Product Group: **Travelling Beam Device**

Travelling Beam Device with Autographic Recorder  
Supplied Without Recorder Charts.

The 3 metre long Travelling Beam Device is used to check for any irregularities in both concrete and bituminous road surfaces. A sensing unit comprising a wheel connected to an indicator provides a magnification of 4:1.

Deviation of the surface from a straight-line is shown on a scale calibrated in increments of 2 mm up to 10 mm and 5 mm up to 25 mm. A dye-marker is fitted which may be used to identify suspect areas. Outrigger wheels provide mobility on site. The device is supplied as three sub-assemblies which are quickly assembled on site. The Travelling Beam is supplied fitted with an autographic recorder providing a permanent record of the surface profile. Records up to 1 kilometre can be recorded on the special chart paper rolls used.

## Standards

EN 12697-32, EN 13280-4, BS 598-104

## Further Information

**\*\*NOT AVAILABLE FOR SALE IN THE USA\*\***

## Accessories



### Charts for Autographic Recorder Pack of 10 Rolls Complete with 10 Fibre-Tipped Pens.

Code: **47-3130**

## Spares/Consumables



## Fibre-tipped Pen

Code: [47-3131](#)



## Charts for Autographic Recorder Pack of 10 Rolls Complete with 10 Fibre-Tipped Pens.

Code: [47-3130](#)

Product Group: [Travelling Beam Device](#)

### Standards

EN 12697-32, EN 13280-4, BS 598-104

### Further Information

**\*\*NOT AVAILABLE FOR SALE IN THE USA\*\***



## ELE Sieve Shaker

Code: [80-0200/01](#)

Product Group: [ELE Sieve Shaker](#)

The ELE sieve shaker is powered by an electromagnetic drive that has no rotating parts to wear making it maintenance free and extremely quiet in operation.

The unit features a triple Vertical-Lateral-Rotary vibrating action that moves the sample over the sieve producing faster more efficient sieving, while the rapid vertical movements also help keep the apertures from blinding.

The shaker is ideal for laboratory or on site use. It is robust, compact and sufficiently lightweight to be portable. The separate digital microprocessor controlled console unit incorporates a keypad for setting the sieving program and is isolated from any effects of vibration from the shaker.

As standard the shaker includes, timer 0-999 minutes, adjustable vibration intensity and adjustable intermittent or continuous operation.

## Further Information

**\*\*NOT AVAILABLE FOR SALE IN THE USA\*\***

The unit accepts up to ten 200 mm or 8 inch, full height, diameter sieves and lid and receiver, or up to six 300 mm or 12 inch diameter sieves and lid and receiver. Complete as specified. Dimensions (l x w x h) 380 x 440 x 1085 mm. For 220 - 240 V AC, 50 Hz 1ph.