



IF IT'S WORTH BUILDING, IT'S WORTH TESTING

This wishlist was generated on 21/05/2020, and contains the following Products:

34-6575/01

Large Curing Tank C/W with Circulating Pump Heater/Thermostat Unit and Lower Rack

38-3005

Le Chatelier Mould

38-3420/01

Le Chatelier Water Bath

39-0045/01

Mortar Mixer Digital 5L Capacity 220-240V 50Hz 1ph

39-1100

Three-gang Mould

39-1300/01

Humidity Cabinet 320 Litre Capacity Compliant to EN 196 and EN 459-2 with Digital Data Recorder

39-1601/01

Humidity Cabinet ASTM 150 Litre Capacity

78-5335/01

Electronic Balance - 220g x 0.001g



Large Curing Tank C/W with Circulating Pump Heater/Thermostat Unit and Lower Rack

Code: [34-6575/01](#)

Product Group: [Expansion \(swell\) Test Equipment, Large Curing Tank](#)

This large curing tank is supplied complete with a submersible pump, immersion heater/thermostat unit and separate control panel. The tank includes a lower rack as standard and is designed to maintain the temperature at $20^{\circ}\text{C} \pm 2^{\circ}\text{C}$, providing that the ambient temperature does not fall below 15°C or rise above 20°C . 3000 cycles per minute.

Standards

EN 12390-2, ASTM C31, AASHTO T23

Further Information

****NOT AVAILABLE FOR SALE IN THE USA****

Supplied as specified. For 220 - 240 V AC, 50 - 60 Hz, 1 ph.

Specification

Internal Dimensions	1040 x 1040 x 605 mm (l x w x h)
Capacity	650 litres
Rated Power	2000 watt
Weight	60 kg



Le Chatelier Mould

Code: 38-3005

Product Group: General Expansion of Dry Hydrated Lime by the Le Chatelier Method, Soundness of Cement Paste by the Le Chatelier Method, Soundness

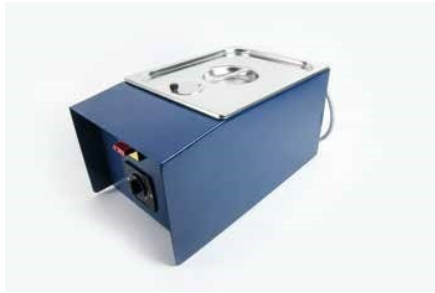
Comprising a split cylinder fitted with two indicator stems. The mould is supplied complete with two glass plates and a weight 100 g \pm 10 g. Three moulds required for each test.

Standards

BS 6463, EN 196-3, EN 459-2

Further Information

****NOT AVAILABLE FOR SALE IN THE USA****



Le Chatelier Water Bath

Code: [38-3420/01](#)

Product Group: [Soundness of Cement Paste by the Le Chatelier Method, Soundness](#)

Constructed with stainless steel inside chamber and exterior case in painted steel sheet, it can hold up to 12 Le Chatelier moulds (to be ordered separately) in the removable rack, supplied with the bath.

The bath reaches the boiling point in approximately 30 minutes. Now an original device keeps the bath temperature at the boiling point, by avoiding the water evaporation and assuring that Le Chatelier moulds remain covered by the water during all the test execution.

The bath is equipped with security device which cuts the power out in case of overheating of the resistance due to lack of water.

Further Information

****NOT AVAILABLE FOR SALE IN THE USA****



Mortar Mixer Digital 5L Capacity 220-240V 50Hz 1ph

Code: 39-0045/01

Product Group: Automatic/Manual 5 Litre Nominal Capacity Mortar Mixer

- New Microprocessor control
- New mix program selector
- Complies with latest EN Standards update
- Choice of automatic mixing cycles
- Sand and water dispenser supplied as standard

This mixer is designed to mix mortars and cement pastes to the requirements of the IS:10890, EN 196-1 & EN 196-3. The mixing paddle has a planetary motion and is driven by a motor with a microprocessor based speed and program controller. The mixer can be operated either in an automatic or manual mode. When the mixer is used in the manual mode, the two mixing speeds can be changed by means of a rocker switch, without switching off the motor. In the automatic mode any one of the preset mixing programs may be selected.

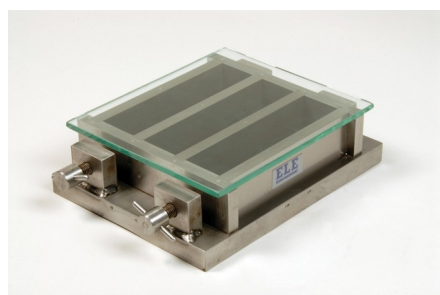
Further Information

****NOT AVAILABLE FOR SALE IN THE USA****

Complete with bowl and paddle, sand and Water dispensers. For 220V AC, 50 Hz, 1 ph.

Specification

Dimensions (l x w x h)	530 x 390 x 715 mm
Speeds (rpm) Low, High	Paddle: 140 ± 5, 285 ± 10 Mixing Head: 62 ± 5, 125 ± 10
Rated Power	180 W
Bowl Capacity	5 litres approx.
Weight	54 kg
Standards	IS:10890, EN 196-1 & EN 196-3



Three-gang Mould

Code: [39-1100](#)

Product Group: [Moulding of Prisms](#)

For 40.1 x 40 x 160 mm mortar prisms. This mould is manufactured to a very high specification. Supplied with glass plate.

Complies to EN 196-1, ISO 679, EN 413-2, EN 459-2, EN 13454-2.

Standards

EN 196-1, EN 413-2, EN 459-2, EN 1015-10, EN 13454-2, ISO 679, BS 3892-1, BS 4551-1

Further Information

****NOT AVAILABLE FOR SALE IN THE USA****



Humidity Cabinet 320 Litre Capacity Compliant to EN 196 and EN 459-2 with Digital Data Recorder

Code: 39-1300/01

Product Group: Humidity Cabinet BS EN, Prism
Moulds and Inserts

This cabinet has a stainless steel interior and it is fitted with adjustable shelves. It also has sealed chambers making it suitable for humidity's up to 98%. This can have an outer door heater to demist the inner toughened glass viewing door. Two 12 mm access ports are provided as standard.

Monitoring and control of both heating and cooling functions are performed with great accuracy, and achieves typical temperature stability of $\pm 0.5^{\circ}\text{C}$. The LED digital display allows the temperature performance to be easily verified. A digitally set over temperature safety cut-out is fitted to all models.

For 220 - 240 V AC, 50 Hz, 1 ph.

Standards

EN 196-1, EN 459-2

Further Information

****NOT AVAILABLE FOR SALE IN THE USA****

10 Reinforced Shelves and Digital Data Recorder.

Specification

Capacity	320 litres
Dimensions External, Internal	660 x 635 x 1745 mm, 490 x 510 x 1275 mm
Temperature Range	+5.0°C to +50°C
Fluctuation (better than)	$\pm 0.2^{\circ}\text{C}$
Variation (better than)	$\pm 0.5^{\circ}\text{C}$
Recorder:	7 day,
Electronic data logger,	0 – 50°C,
Temperature,	0 – 98% RH
Humidity	
Rated power	850 Watt
Number of shelves	10 fully adjustable in 20 mm

Product Sheet

www.ele.com
+44 (0) 01525 249 200



Weight

increments
200 kg



Humidity Cabinet ASTM 150 Litre Capacity

Code: 39-1601/01

Product Group: Humidity Cabinet ASTM

- Complete with temperature and Digital Data Recorder
- Micro-processor controller for temperature and humidity for precise and reliable control
- Stainless Steel interior with adjustable shelves
- CFC-free polyurethane insulation to provide efficient thermal stability
- 12mm access port
- 4 trays are included, but cabinet can fit 6 tray

Prior to testing, ASTM C109 requires prisms to be cured for a period of at least 24 hours at 23°C ±2°C, 95 % RH minimum. The prisms are then de-moulded and stored under water for the required curing time, usually 48 hours, 72 hours, 7 and 28 days.

The Humidity Cabinet is built to a high specification and is designed for the early curing of mortar prisms prior to storing under water. Relative humidity up to 98%.

Standards

ASTM C109, ASTM C511

Further Information

for 220-240 V AC 50 Hz 1ph

Specification

Temperature Range	+5 °C to 60 °C
Temperature Control	0.2 °C at 20°C
Temperature Variation	± 0.5 °C at 20°C
Humidity Range	0 to 98%
External Dimensions (mm)	1075 × 635 × 660
Internal Dimensions (mm)	590 × 510 × 490
Shelves	4 Shelves holds 6 x 39-1100 moulds
Shelf Capacity	15kg
Input Power	800 Watt
Weight	100 kg



Electronic Balance - 220g x 0.001g

Code: [78-5335/01](#)

Product Group: [Electronic Balances](#)

Further Information

****Not available for sale in the USA****

Specification

Capacity resolution	220 g x 0.001 mg
Pan size	120 mm dia
Mains and battery	No
Dimensions (w x d x h)	220 x 310 x 270 mm
Weight	12 kg
Weighing units	g, mg, ct, GN, N, oz, ozt, dwt, T, custom unit
Readability	0.001 mg