



IF IT'S WORTH BUILDING, IT'S WORTH TESTING

This wishlist was generated on 11/06/2020, and contains the following Products:

38-0620

Pure Mineral Oil 1 Litre Bottle.

38-0645

Reference Cement

38-0650

Filter Papers

38-1000

Blaine Air Permeability Apparatus

38-2015/01

Automatic Vicat Apparatus

38-3900/01

Autoclave

39-0045/01

Mortar Mixer Digital 5L Capacity 220-240V 50Hz 1ph

39-0060

Bowl Cover

39-1100

Three-gang Mould

39-1120

Feeding Hopper

39-1150/01

Jolting Table 220 - 240 V 50 Hz

39-1300/24

Data Logger for Humidity Cabinet to EN 196 320 Litre capacity

39-1600/01

Humidity Cabinet BS EN 150 Litre Capacity 50Hz

78-3104/01

Digital Hotplate

Contents

www.ele.com
+44 (0) 01525 249 200



79-6090

12in Dia ASTM Sieve 45 Mic Stainless Steel Mesh.

80-0200/01

ELE Sieve Shaker

83-4170/01

Muffle Furnace



Pure Mineral Oil 1 Litre Bottle.

Code: [38-0620](#)

Product Group: [Blaine Fineness Apparatus](#),
[Determination of Fineness Blaine Apparatus](#)

Standards

ASTM C204, EN 196-6



Reference Cement

Code: [38-0645](#)

Product Group: [Determination of Fineness Blaine Apparatus](#)

Accessory 5g sachet

Standards

ASTM C204, AASHTO T153, EN 196-6

Further Information

Available from U.K factory



Filter Papers

Code: [38-0650](#)

Product Group: [Determination of Fineness Blaine Apparatus](#)

Accessory: 12.7mm diameter. Box of 100.

Standards

EN 196-6, AASHTO T153

Further Information

****NOT AVAILABLE FOR SALE IN THE USA****



Blaine Air Permeability Apparatus

Code: 38-1000

Product Group: Blaine Fineness Apparatus,
Determination of Fineness Blaine Apparatus

- Designed for the determination of fineness to EN 196-6, BS 4359-2, ASTM C204
- Supplied complete with stainless steel cell perforated disc and plunger Manometer U-Tube Aspirator bottle of Manometer liquid (pure mineral 1 litre) and a box of filter papers

Standards

EN 196-6, EN 459-2, EN 13286-44, BS 4359-2, ASTM C204, AASHTO T153

Specification

Cell	Stainless steel; 12.70 \pm 0.10 mm i.d.
Disk	0.9 \pm 0.1 mm thick with 30-40 one mm diam. holes.
Plunger	Stainless steel.
Manometer	U-tube glass with ground joint, stop cock and rubber bulb assembly.
Filter Paper	12.70 mm diam.
Fluid	Pure Mineral Oil.
Weight	Net 7 lbs. (3.2 kg).



Automatic Vicat Apparatus

Code: 38-2015/01

Product Group: Automatic Vicat

Complete with EN and ASTM Initial and Final needles, Consistency Plunger, Windows(R) software and RS232 cable, 1 x EN and ASTM Mould and Glass Plate. Suitable for continuous use in saturated humidity, at a controlled temperature of $20^{\circ}\text{C} \pm 1^{\circ}\text{C}$.

Complies to EN 13279-2 (GYPSUM), EN 480-2, ASTM C187, ASTM C191, DIN 1168, DIN 1196, NF P15-414, NF P15-431, AASHTO T131, EN 196-3

The results are printed on the incorporated printer and this eliminates the manual operations of installing and zeroing the paper graph on the drum. The use of the appliance is extremely simplified by the guiding menu that is available in english, french, spanish, german, italian language.

- Transfer each single control or function of the Vicat on the PC
- Verify in real time each phase of the test being made
- Automatically download the final results at the end of the test on all the connected Vicat
- Process and file at the same time all the tests without obliging the operator to move from his working place.

Additionally the firmware has many other functions detailed in the technical chart that will be transmitted to the user interested to know more about it.

Standards

ASTM C187, ASTM C191

Further Information

****NOT AVAILABLE FOR SALE IN THE USA****

For 220 - 240 V AC, 50 - 60 Hz, 1 ph.



Autoclave

Code: 38-3900/01

Product Group: Soundness of Portland Cement by the Autoclave Method

Standards: ASTM C188, C141 , C151

The Laboratory Cement Autoclave is suitable for conducting accelerated soundness tests on Cement or the Autoclave expansion test. The equipment consists of a Stainless Steel Pressure Vessel with insulated outer shell, fabricated out of high quality Stainless Steel Sheet. The pressure inside the vessel is controlled through a micro processor based PID controller. The equipment is supplied complete with spring loaded safety valve pressure gauge, PID controller with RTD for control of Heater unit.

Special Features :

- Rust proof stainless steel pressure vessel & enclosure
- Microprocessor based PID controller for accurately controlling the temperature hence pressure
- Three fold safety mechanism for the equipment and the operator
- Reliable silicon rubber lid sealing gasket
- Very Compact

Specifications :

- Working Pressure: 21 ± 1 kg/cm² at 215° C
- Pressure Vessel: ID 150mm X Depth 500
- Weight: 70Kg
- Heater: 2000 Watts
- Size: 480 (W) x 580 (D) x 1100 (H)
- Supply: 220V, 50Hz, 1 phase

Panel mounted PID controller with international safety certifications

The equipment consist of the following replaceable parts :

- Rubber Gasket, Viton
- Pressure Gauge, 0-42 kg/cm²
- Safety Valve
- Digital Temperature Controller

Further Information

NEW MODEL SUPERSEDING 38-3800/01 - CHECK AVAILABILITY BEFORE PLACING AN ORDER

Product Sheet

www.ele.com
+44 (0) 01525 249 200



****NOT AVAILABLE FOR SALE IN THE USA****



Mortar Mixer Digital 5L Capacity 220-240V 50Hz 1ph

Code: 39-0045/01

Product Group: Automatic/Manual 5 Litre Nominal Capacity Mortar Mixer

- New Microprocessor control
- New mix program selector
- Complies with latest EN Standards update
- Choice of automatic mixing cycles
- Sand and water dispenser supplied as standard

This mixer is designed to mix mortars and cement pastes to the requirements of the IS:10890, EN 196-1 & EN 196-3. The mixing paddle has a planetary motion and is driven by a motor with a microprocessor based speed and program controller. The mixer can be operated either in an automatic or manual mode. When the mixer is used in the manual mode, the two mixing speeds can be changed by means of a rocker switch, without switching off the motor. In the automatic mode any one of the preset mixing programs may be selected.

Further Information

****NOT AVAILABLE FOR SALE IN THE USA****

Complete with bowl and paddle, sand and Water dispensers. For 220V AC, 50 Hz, 1 ph.

Specification

Dimensions (l x w x h)	530 x 390 x 715 mm
Speeds (rpm) Low, High	Paddle: 140 ± 5, 285 ± 10 Mixing Head: 62 ± 5, 125 ± 10
Rated Power	180 W
Bowl Capacity	5 litres approx.
Weight	54 kg
Standards	IS:10890, EN 196-1 & EN 196-3



Bowl Cover

Code: 39-0060

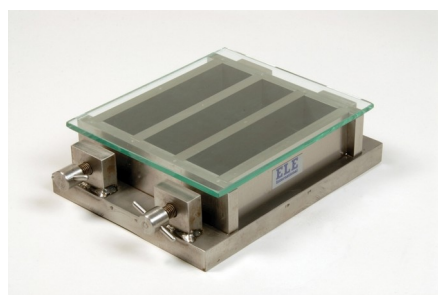
Product Group: Automatic/Manual 5 Litre Nominal
Capacity Mortar Mixer

Standards

EN 196-1, EN 196-3, EN 413-2, EN 459-2, EN 1744-1, EN 13279-2, EN 1015-2, EN 13395-1, EN 13454-2, ISO 679, BS 3892-1, BS 3892-3, BS 6463-103, BS 4551-1

Further Information

NOT AVAILABLE FOR SALE IN THE USA



Three-gang Mould

Code: [39-1100](#)

Product Group: [Moulding of Prisms](#)

For 40.1 x 40 x 160 mm mortar prisms. This mould is manufactured to a very high specification. Supplied with glass plate.

Complies to EN 196-1, ISO 679, EN 413-2, EN 459-2, EN 13454-2.

Standards

EN 196-1, EN 413-2, EN 459-2, EN 1015-10, EN 13454-2, ISO 679, BS 3892-1, BS 4551-1

Further Information

****NOT AVAILABLE FOR SALE IN THE USA****



Feeding Hopper

Code: [39-1120](#)

Product Group: [Moulding of Prisms](#)

For 39-1100 Mould.

Complies to EN 196-1, ISO 679, EN 413-2, EN 459-2,
EN 13454-2

Further Information

****NOT AVAILABLE FOR SALE IN THE USA****



Jolting Table 220 - 240 V 50 Hz

Code: [39-1150/01](#)

Product Group: [Jolting Table](#)

This machine consists of a mould table seated on a rotating cam driven at 60 revolutions per minute. The apparatus is supplied with a remote mains switch box, incorporating a push button start/stop control and automatic stop control at end of test.

Supplied without moulds.

Complies to EN 196-1, ISO 679, EN 413-2, EN 459-2, EN 13454-2.

Standards

EN 196-1, EN 413-2, EN 459-2, EN 1744-1, EN 1015-10, EN 1015-11, EN 13454-2, ISO 679, BS 3892-1, BS 4551-1

Further Information

****NOT AVAILABLE FOR SALE IN THE USA****

Specification

Motor rating	0.24 kW (1/3 hp)
Cam shaft RPM	60
Table lift	15 +/- 0.3 mm
Overall dimensions with swing bolts raised	(H x W x D) 340 x 400 x 1045 mm
Weight	90 kg



Data Logger for Humidity Cabinet to EN 196 320 Litre capacity

Code: [39-1300/24](#)

Product Group: [Humidity Cabinet BS EN, Prism
Moulds and Inserts](#)

Digital data logger for use with 39-1300 Humidity
Cabinet.

Further Information

****NOT AVAILABLE FOR SALE IN THE USA****



Humidity Cabinet BS EN 150 Litre Capacity 50Hz

Code: 39-1600/01

Product Group: Humidity Cabinet BS EN

- Micro-processor controller for temperature and humidity for precise and reliable control
- Stainless Steel interior with adjustable shelves
- CFC-free polyurethane insulation to provide efficient thermal stability
- 12mm access port

Prior to testing, EN 196 requires prisms to be cured for a period of at least 24 hours at $20 \pm 1^\circ\text{C}$, 90 % RH minimum. The prisms are then de-moulded and stored under water for the required curing time, usually 48 hours, 72 hours, 7 and 28 days.

The Humidity Cabinet is built to a high specification and is designed for the early curing of mortar prisms prior to storing under water. Relative humidity up to 98%.

Please note 39-1300/24 Digital Recorder is optional, but must be ordered with the cabinet so they may be calibrated together.

Specification

Temperature Range	+5 °C to 60 °C
Temperature Control	0.2 °C at 20°C
Temperature Variation	± 0.5 °C at 20°C
Humidity Range	0-98%
External Dimensions (mm)	1075 × 635 × 660
Internal Dimensions (mm)	590 × 510 × 490
Shelves	4 Shelves hold 6 x 39-1100 moulds
Shelf Capacity	15 kg
Input Power	800 Watt
Weight	100kg



Digital Hotplate

Code: 78-3104/01

Product Group: Digital Hotplate

Further Information

****Not available for sale in the USA****

Specification

Dimensions	520 x 360 x 130 mm
Construction	Robust metal with anodised aluminium plate heated surface
Maximum temperature	300 x 1°C
Rated power	1500 W



12in Dia ASTM Sieve 45 Mic Stainless Steel Mesh.

Code: 79-6090

Product Group: 12in Dia ASTM Brass Sieves, 12" Diameter ASTM Sieves, 12" Diameter ASTM Sieves, 12" Diameter ASTM Sieves

Standards

ASTM E11

Specification

Frames	Full height; 3-1/4" (82.5 mm) depth to mesh.
Construction	Polished and lacquered brass with S.S. mesh.
Nameplates	Show standard, alternate and Tyler Screen Scale equivalent designations.
Weights	Net 4 lbs. (1.8 kg).
Sieve Size or Number	No. 325
Sieve Opening Standard	45 um
Sieve Opening Alternative (in.)	0.0017



ELE Sieve Shaker

Code: 80-0200/01

Product Group: ELE Sieve Shaker

The ELE sieve shaker is powered by an electromagnetic drive that has no rotating parts to wear making it maintenance free and extremely quiet in operation.

The unit features a triple Vertical-Lateral-Rotary vibrating action that moves the sample over the sieve producing faster more efficient sieving, while the rapid vertical movements also help keep the apertures from blinding.

The shaker is ideal for laboratory or on site use. It is robust, compact and sufficiently lightweight to be portable. The separate digital microprocessor controlled console unit incorporates a keypad for setting the sieving program and is isolated from any effects of vibration from the shaker.

As standard the shaker includes, timer 0-999 minutes, adjustable vibration intensity and adjustable intermittent or continuous operation.

Further Information

****NOT AVAILABLE FOR SALE IN THE USA****

The unit accepts up to ten 200 mm or 8 inch, full height, diameter sieves and lid and receiver, or up to six 300 mm or 12 inch diameter sieves and lid and receiver. Complete as specified. Dimensions (l x w x h) 380 x 440 x 1085 mm. For 220 - 240 V AC, 50 Hz 1ph.



Muffle Furnace

Code: 83-4170/01

Product Group: Furnaces, Loss-on-Ignition,
Loss-on-Ignition

The unique design of oven door for safe and easy operation to ensure that the high-temperature hot gas will not escape from inside the oven.

Inert gas inlet and outlet reserved in the chamber.

Micro-computer PID controller: easy operation, accurate, reliable and safe control.

Inside lining of fire-door and box panel are both made of stainless steel materials and are corrosion-resistance and free deformation under high temperature.

Light chamber for durable service (refractory-brick chamber and ceramic-fiber chamber are optional).

With excellent door seal, thermal loss is minimised and temperature evenness is increased in the chamber.

Complies to: EN 196-2 (EN 196-21), EN 459-2, EN 13454-2

Standards

EN 196-2, EN 459-2, EN 13454-2, BS 1016-4, ISO 344, ISO 1171, ASTM D2361, ASTM D2795, ASTM D3714

Specification

External dimensions (l x w x h)	545 x 385 x 400 mm
Work chamber dimensions (l x w x h)	300 x 200 x 120 mm
Capacity	7 litres
Maximum temperature	1200 °C
Electrical supply	220 – 240 V AC, 50 - 60 Hz, 1 ph
Power supply	2500 W
Weight	130 kg