

# OPERATING INSTRUCTIONS

## Flow Table and Motorising Unit

### 38-6000 to 38-6160

<b>ELE International</b> Chartmoor Road, Chartwell Business Park Leighton Buzzard, Bedfordshire, LU7 4WG England phone: +44 (0) 1525 249200 fax: +44 (0) 1525 249249 email: <a href="mailto:ele@eleint.co.uk">ele@eleint.co.uk</a> <a href="http://www.ele.com">http://www.ele.com</a> ELE International, a division of Hach Lange Ltd.	<b>Distributor:</b>	<b>ELE International</b> Soiltest Product Division PO Box 389, Loveland, CO 80539 USA phone: +1 (800) 323 1242 fax: +1 (970) 663 9781 email: <a href="mailto:soiltest@eleusa.com">soiltest@eleusa.com</a> <a href="http://www.eleusa.com">http://www.eleusa.com</a>
<i>In the interests of improving and updating its equipment, ELE reserves the right to alter specifications to equipment at any time</i> <b>ELE International 2016 ©</b>		

## Contents

Section		Page
1	Introduction and Specification	3
2	Safety	3
3	Installation	3
4	Controls/Operation	4
5	Maintenance	4
6	Accessories	4

## 1 Introduction and Specification

### ***Flow Table (38-6000)***

Manufactured from cast bronze as specified in BS 4551 and ASTM C230. Supplied complete with spindle. Weight 4.1 kg.

### ***Tripod for Flow Table (included in 38-6000)***

Manufactured from cast iron. Weight 8.6 kg.

### ***Baseplate (included in 38-6000)***

For fixing the flow table tripod to a concrete plinth. Manufactured from steel, 25 mm thick x 254 mm square. Weight 13 kg.

### ***Motorising Unit (38-6100)***

For use with 38-6020. Operates the cam at a speed of 100 rpm.

## 2 Safety

Whilst the test is in operation do not remove any covers or attempt to adjust any part of the machine.

Ensure all moving parts are thoroughly secured before attempting any maintenance.

Ensure all appropriate measures are taken to protect the operator from excessive noise.

See noise certificate (when supplied).

### ***Electrical safety***

**Warning:** Before removing any covers or performing maintenance repair and service, isolate from electrical supply by removing mains plug. Where mains supply is required during these activities, only competent persons should perform the work.

## 3 Installation

The baseplate should be anchored to the top of a concrete pedestal (the construction of which is described in the relevant standards). Four 16 mm diameter holes are provided in the baseplate for this purpose. The hole centres are shown in figure 1.

The baseplate is also provided with four studs, nuts and washers in order that the tripod may be secured to the baseplate, see figure 1.

Lightly lubricate the bearing surfaces of the flow table vertical shaft, then insert the shaft into the vertical hole in the tripod. The tripod cam face should also be lubricated to lessen wear and promote smooth operation.

The motorising unit should be assembled and attached as shown in figure 2. The handle and arm **must** be removed from the tripod. The horizontal shaft may then be secured into the coupling. After ensuring correct alignment of the coupling and shaft, remove the flow table and vertical shaft before checking that the motorising unit is rotating the tripod cam in the correct direction (clockwise looking from the motor), see figure 2. If incorrect, contact ELE Service Department.

### Electrical supply

Check that the power supply is compatible with the requirements stated on the label and connect in accordance with IEE regulations or to local requirements.

Local isolation of machine required.

It is advised that this machine be connected via a residual current device (not supplied), and it should operate if earth leakage current exceeds 0.03 amps.

The power cable is coded as follows:

Brown wire	L	Live or Power
Blue wire	N	Neutral
Green/Yellow wire	E	Earth or Ground

**Note:** exercise extreme caution when using the machine with wet hands. Dry hands before operating machine.

### Portable Appliance Tests (PAT)

All ELE designed products are tested for electrical safety prior to sale.

An electrical safety test label is fitted, (usually adjacent to the mains input socket).

Should no label be found, please contact ELE Service Department quoting the serial number of the equipment.

Organisations have an obligation to ensure equipment is maintained and is safe for use. Regular PAT testing is one means of ensuring equipment continues to be electrically safe.

**Important: do not connect PAT leads to sensitive components such as PCBs, control switches and the like.**

### DO NOT FLASH TEST ELECTRONIC EQUIPMENT.

**If in doubt as to the most suitable connection point (which will usually be an earth stud or an external earth connection) contact ELE Service Department for assistance.**

## 4 Controls/Operation

The hand operated flow table is actuated by simply rotating the handle in a clockwise direction. For test procedures refer to the relevant standards.

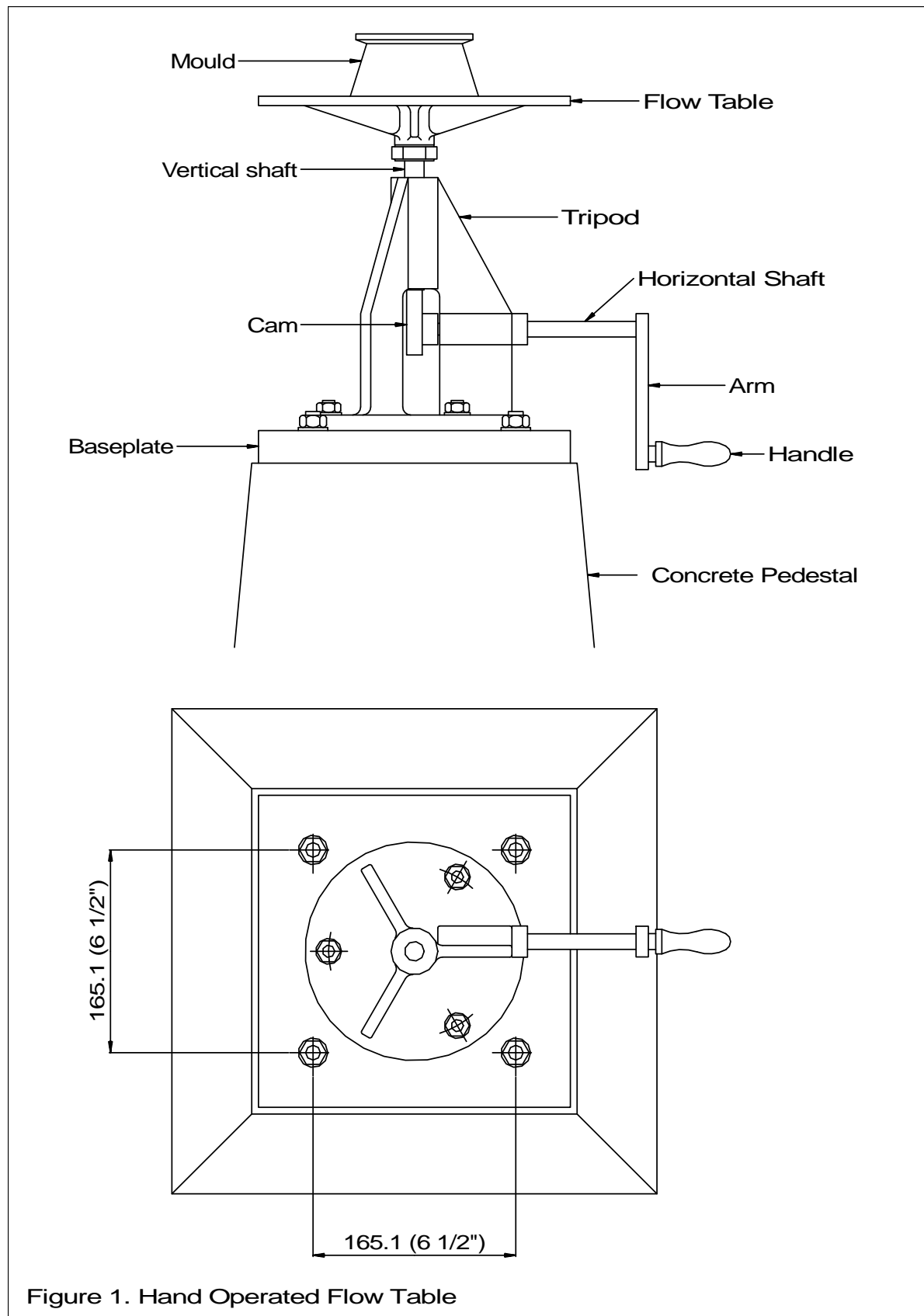
The motorising unit is controlled by an ON/OFF switch-circuit breaker situated on the side of the unit. See figure 2.

## 5 Maintenance

Keep the equipment clean and lightly lubricate the vertical and horizontal shafts, and the cam face. Periodically check the tightness of all nuts and bolts.

## 6 Accessories

38-6040	Flow Mould
38-6080	ASTM Calipers
38-6160	Plastic Tamper



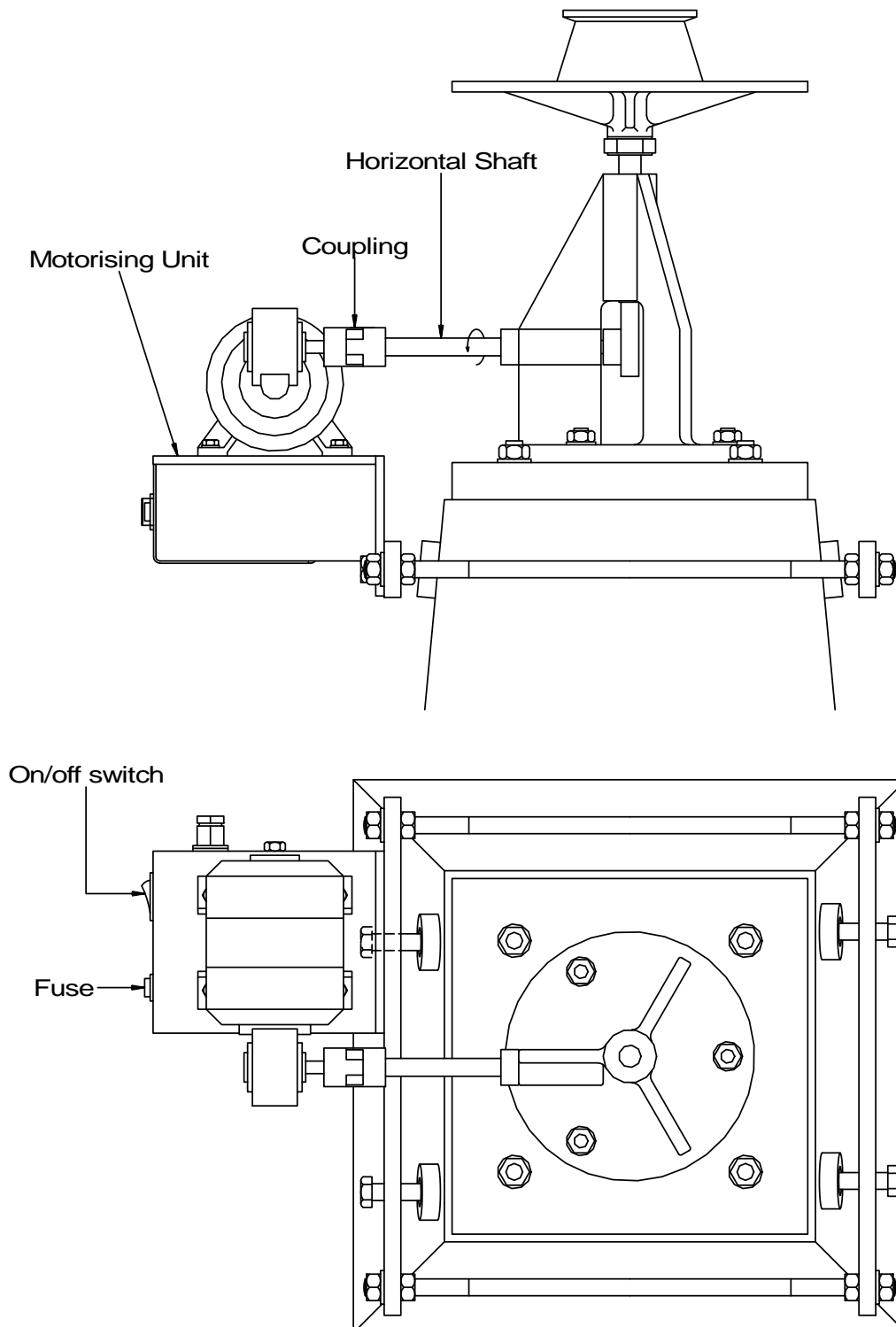


Figure 2. Motorised Flow Table